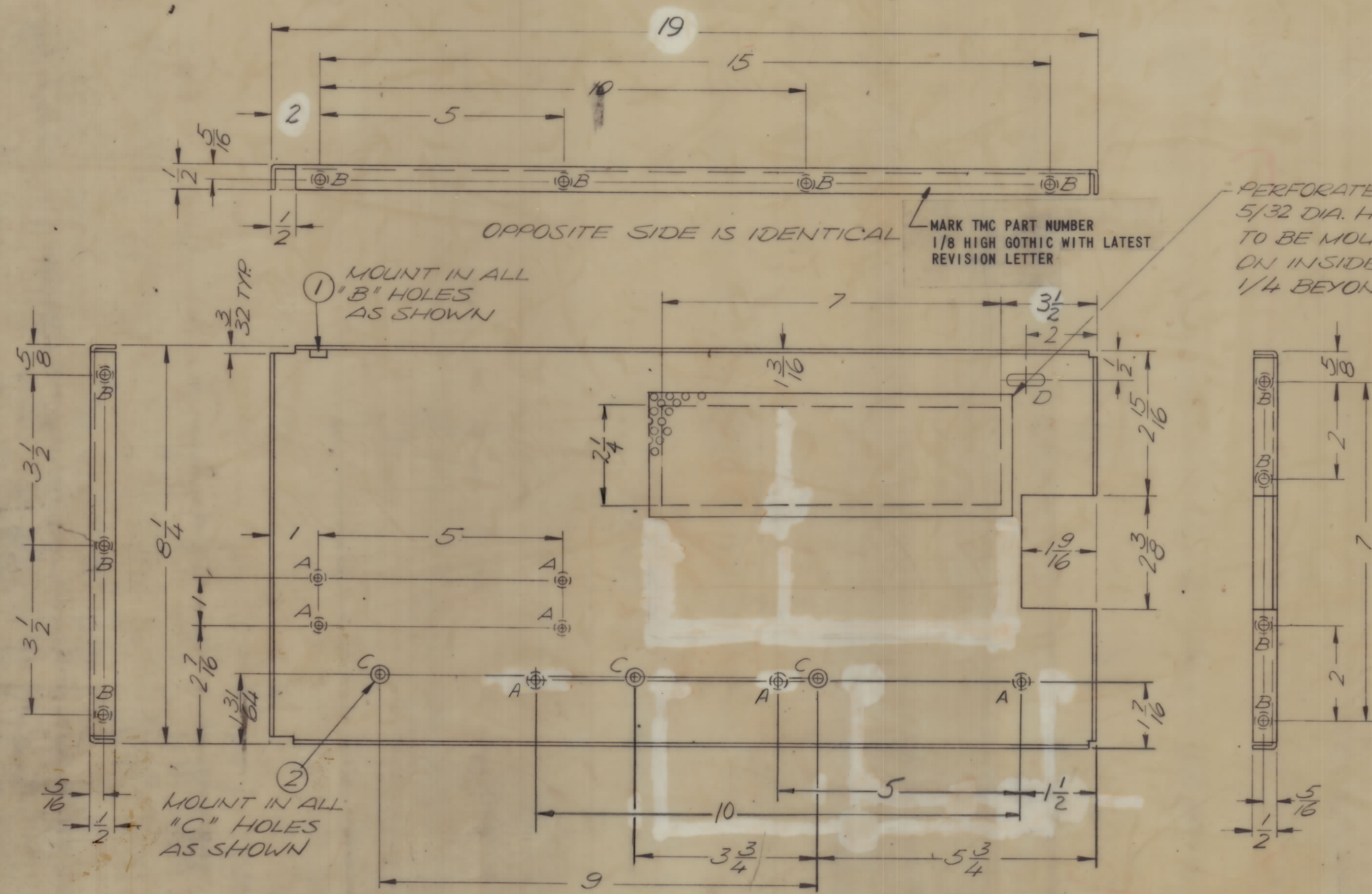


REVISIONS							
E.M.N.NO	DRAFT	CHKD	ZONE	LTR	DESCRIPTION	DATE	APPROVED
	2			0	ORIGINAL RELEASE FOR PRODUCTION	6/21/71	G.E.S.



HOLE LEGEND:
 A - 6-32 C/SINK 82° (7 REQ.)
 B - .191 - .194 DIA. (15 REQ.)
 C - .250 - .254 DIA. (3 REQ.)
 D - 11/64 x 11/32 SLT. (1 REQ.)

UNLESS OTHERWISE SPECIFIED:
 1. USE MATERIAL THICKNESS FOR MAXIMUM RADIUS ON ALL BENDS.
 2. ALL ANGULAR BENDS 90 DEGREES.
 3. REMOVE ALL BURRS AND SHARP EDGES.
 4. MOUNT INSERTS AFTER FINISHING.

QTY. REQ.	ITEM	PART NO.	DESCRIPTION	SYMBOL
3	2	NT129-1032-4	NUT, ROUND, SWAGE TYPE	C
15	1	NT129-0632-4	NUT, ROUND, SWAGE TYPE	B

F. BLUETT		LIST OF MATERIAL	
FINAL APPROVAL	DATE	THE TECHNICAL MATERIEL CORP.	
MECH. DES.	DATE	MAMARONECK, NEW YORK	
ELECT. DES.	DATE	SIDE PLATE (RIGHT SIDE)	
CHECKED	DATE		
DRAWN	DATE		
ALPETROCCA	1-14-71		

QTY / UNIT	MODEL USED ON	ASS'Y NO.
1	TLAA - 1K	BMA459
APPLICATION		
	CODE	
NOTICE TO PERSONS RECEIVING THIS DRAWING		
THE TECHNICAL MATERIEL CORPORATION claims proprietary right in the material disclosed hereon. This drawing is issued in confidence for engineering information only and may not be reproduced or used to manufacture anything shown hereon without permission from THE TECHNICAL MATERIEL CORPORATION to the user. This drawing is loaned for mutual assistance and is subject to recall at any time.		

UNLESS OTHERWISE SPECIFIED DIMENSIONS ARE IN INCHES AND INCLUDE CHEMICALLY APPLIED OR PLATED FINISHES

TOLERANCES ON
 DECIMALS FRACTIONS
 .X ± .05 ± 1/64
 .XX ± .01 ANGLES
 .XXX ± .005 ± 0° -30'

MATERIAL .064 ALLUM.
 5052 - H32

FINISH
 S404 YEL. IRIDITE

SIZE	CODE IDENT NO.	DWG NO.	ISSUE
C	82679	MS5969	0
SCALE		SHEET OF	

MS5969