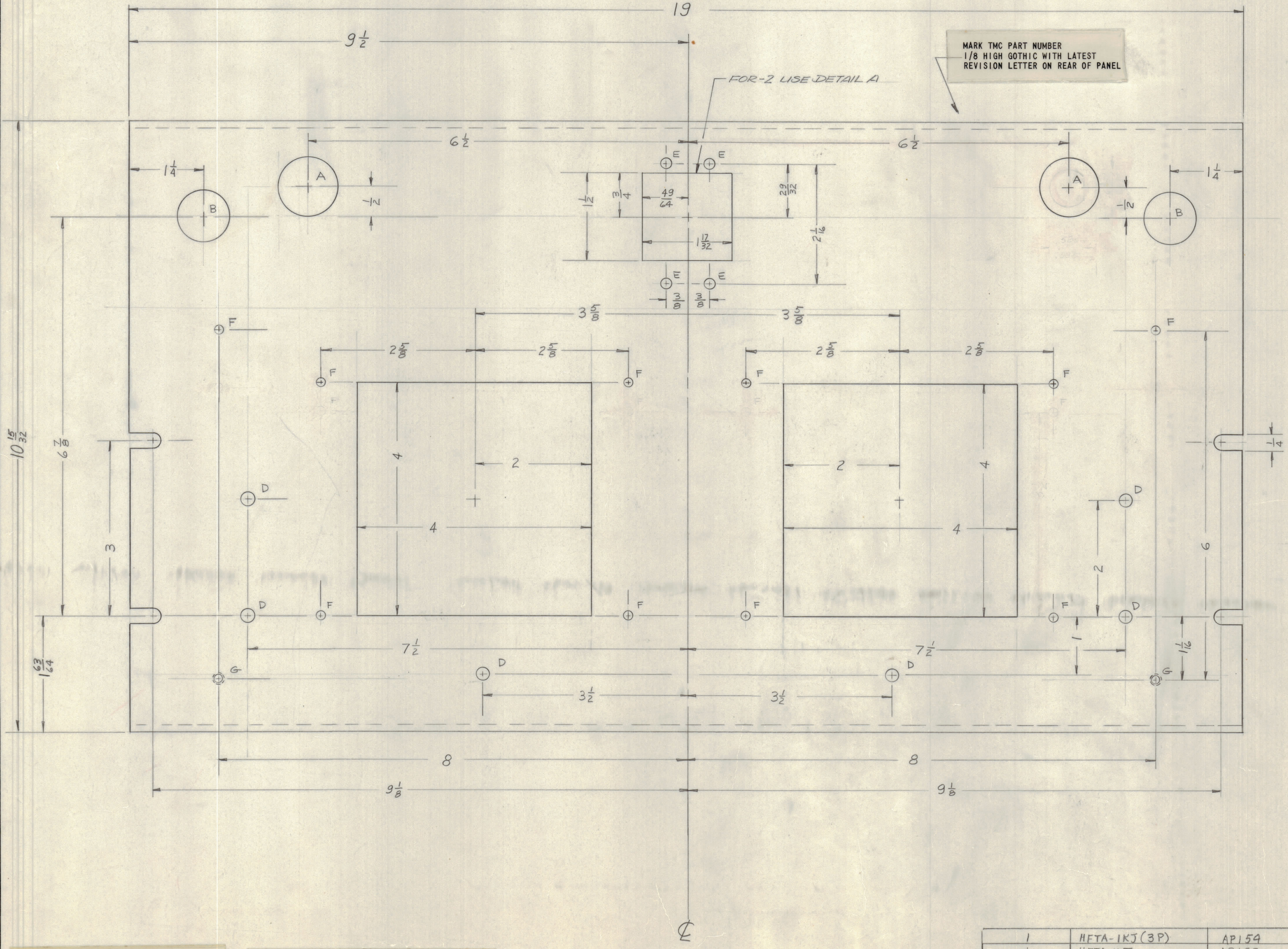
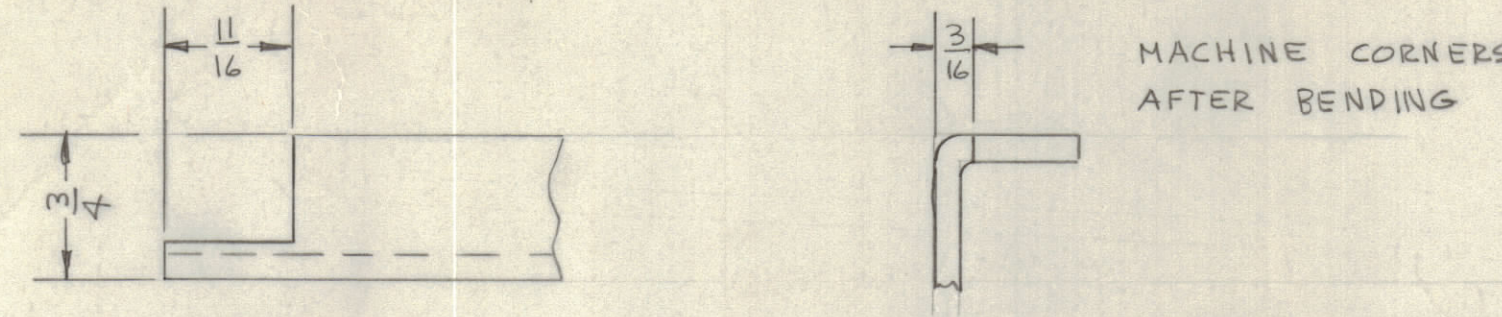
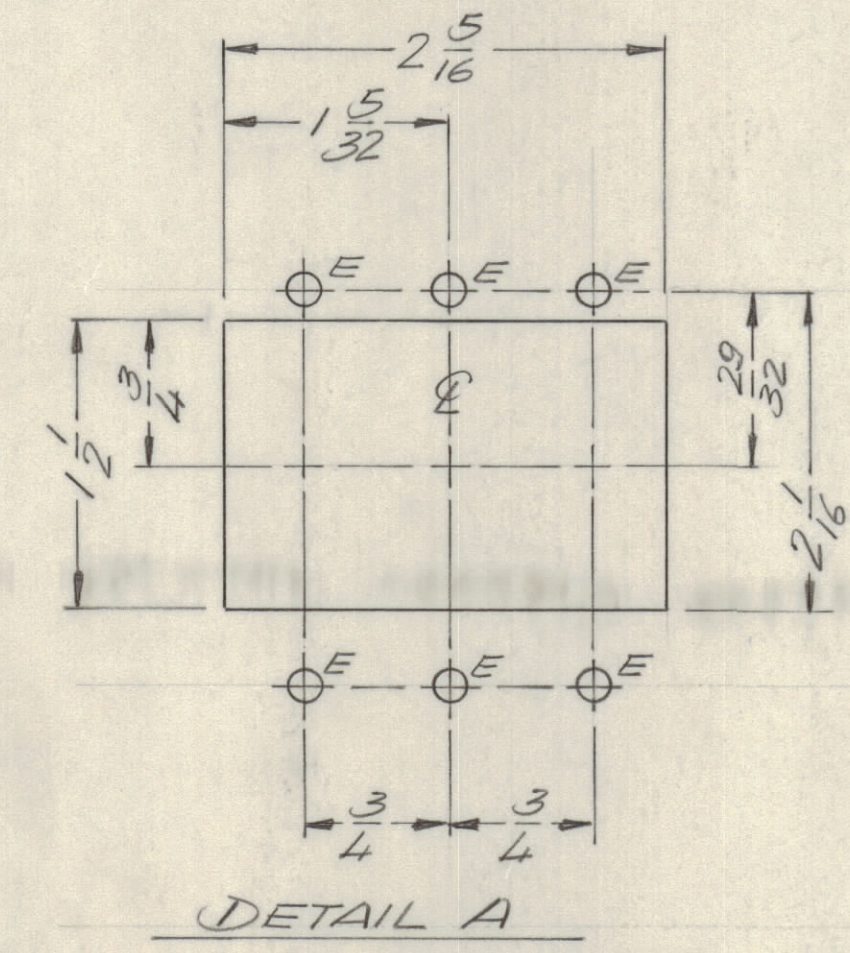


TMC P/N	CUTOUT
MS 5943	AS SHOWN
MS 5943-2	USE DETAIL A

REVISIONS							
E.M.N.O	DRAFT	CHKD	ZONE	LTR	DESCRIPTION	DATE	APPROVED
					ORIGINAL RELEASE FOR PRODUCTION	3/10/71	PEL
20589	JM	JM	AC	A	Add A Hole	5 APR 72	JM
21074	CE	EJ	B	B	ADD -2 & DETAIL A	8 MAY 73	EJ



- A ~ 1 1/16 DIA. 2 REQ'D
- B ~ 7/8 DIA. 2 REQ'D
- C ~
- D ~ 13/64 DIA. 6 REQ'D
- E ~ 11/64 DIA. 4 REQ'D (6 REQ'D FOR -2)
- F ~ 3/64 DIA. 10 REQ'D
- G ~ DRILL & TAP 0440 2 REQ'D



- UNLESS OTHERWISE SPECIFIED:**
- USE MATERIAL THICKNESS FOR MAXIMUM RADIUS ON ALL BENDS.
 - ALL ANGULAR BENDS 90 DEGREES.
 - REMOVE ALL BURRS AND SHARP EDGES.
 - MOUNT INSERTS AFTER FINISHING.
- FINISH NOTES:**
- S404 - IRIDITE 14-2 AL-COAT.
 - S114 - ZINC CHROMATE PRIMER
 - S115 - SMOOTH GRAY ENAMEL
- FRONT AND EDGES ONLY
PRIME AND PAINT PER CUSTOMER'S SPECIFICATIONS

1	HFTA-1KJ(3P)	AP159
1	HFTA-1KJ	AP152
QTY / UNIT	MODEL USED ON	ASSY NO.
APPLICATION		
CODE		
<small>NOTICE TO PERSONS RECEIVING THIS DRAWING</small> <small>THE TECHNICAL MATERIEL CORPORATION claims proprietary right in the material disclosed hereon. This drawing is issued in confidence for engineering information only and may not be reproduced or used to manufacture anything shown hereon without permission from THE TECHNICAL MATERIEL CORPORATION to the user. This drawing is loaned for mutual assistance and is subject to recall at any time.</small>		

UNLESS OTHERWISE SPECIFIED DIMENSIONS ARE IN INCHES AND INCLUDE CHEMICALLY APPLIED OR PLATED FINISHES	
TOLERANCES ON	
DECIMALS	FRACTIONS
.X ± .05	± 1/64
.XX ± .01	ANGLES
.XXX ± .005	± 0° - 30'
MATERIAL .125 ALUM	
5052-H32	
FINISH	
SEE NOTES	

QTY. REQ.	ITEM	PART NO.	DESCRIPTION	SYMBOL
REF: LD 2442				
BUDETTI LIST OF MATERIAL				
FINAL APPROVAL	DATE	THE TECHNICAL MATERIEL CORP.		
MECH. DES.	DATE	MAMARONECK, NEW YORK		
ELECT. DES.	DATE	PANEL FRONT		
CHECKED	DATE			
DRAWN	DATE			
SIZE	CODE	IDENT NO.	DWG NO.	ISSUE
D	82679	MS5943	B	
SCALE	SHEET			OF