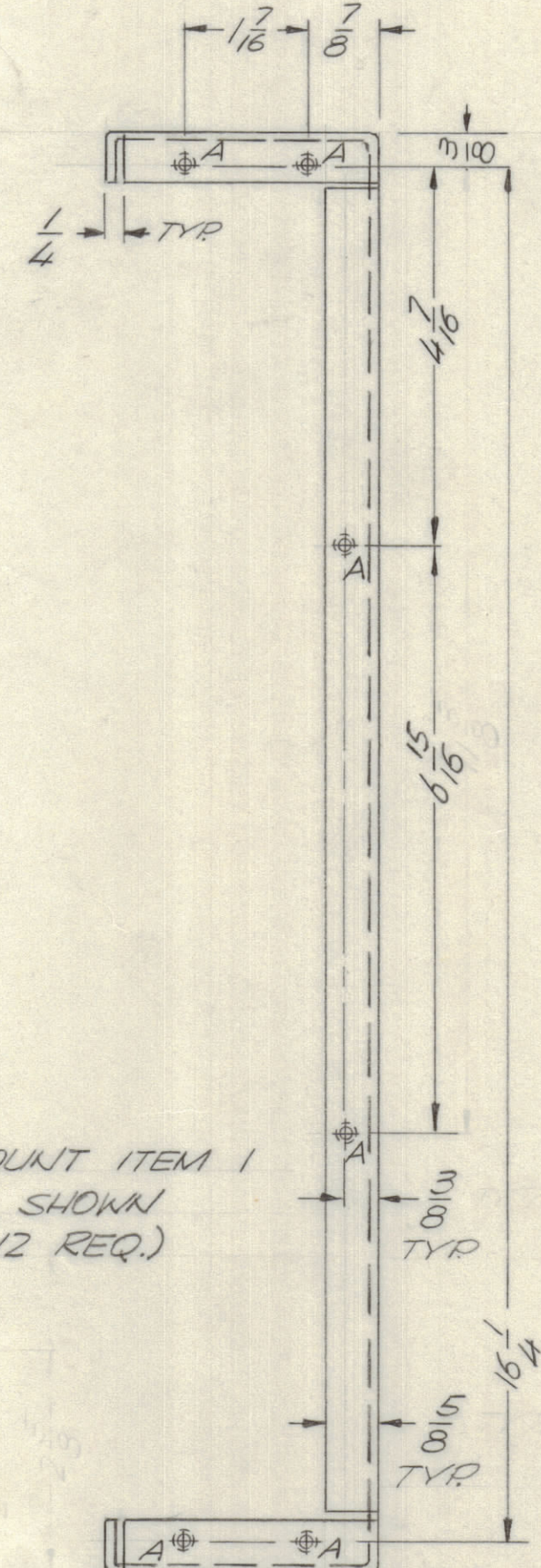
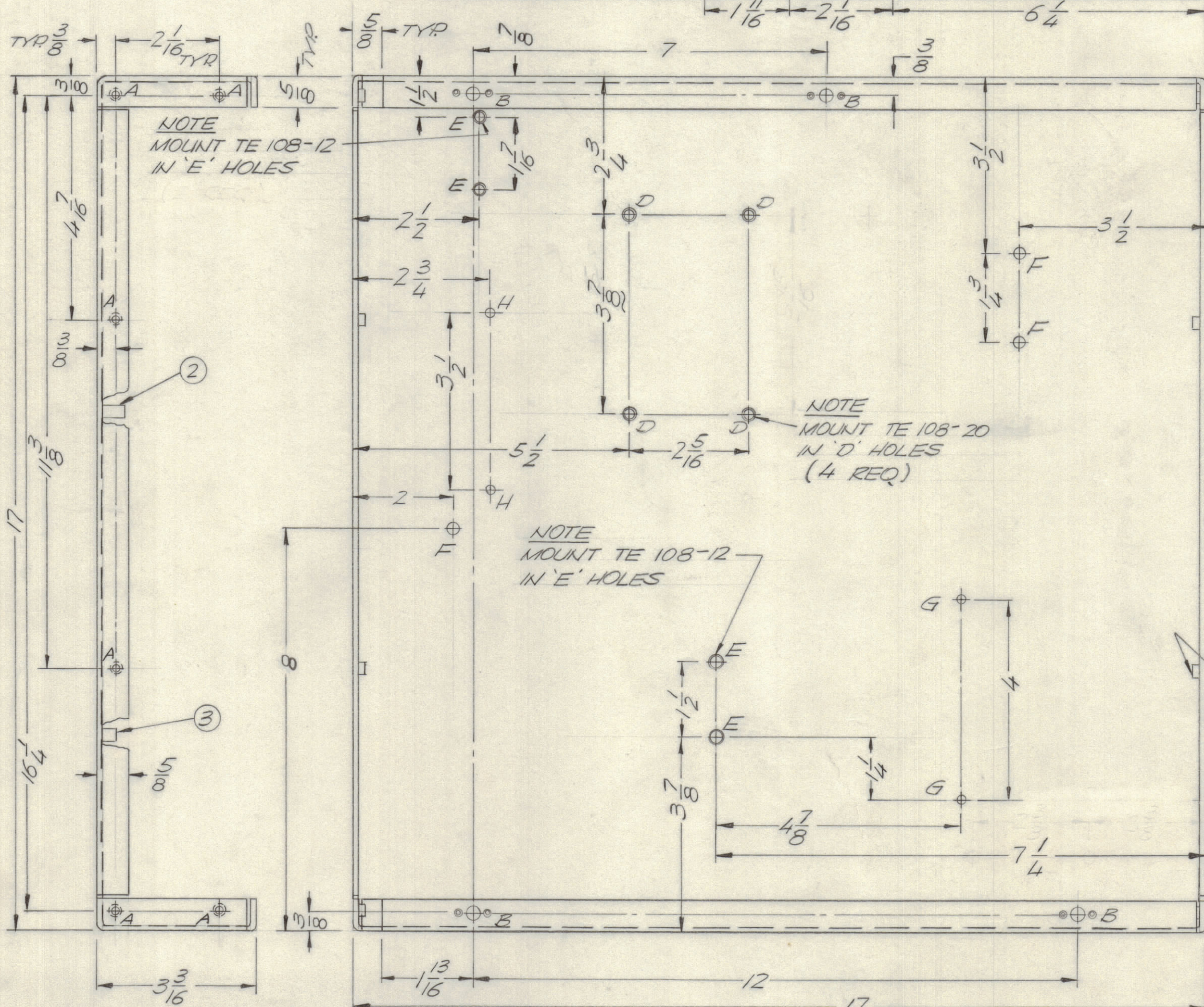
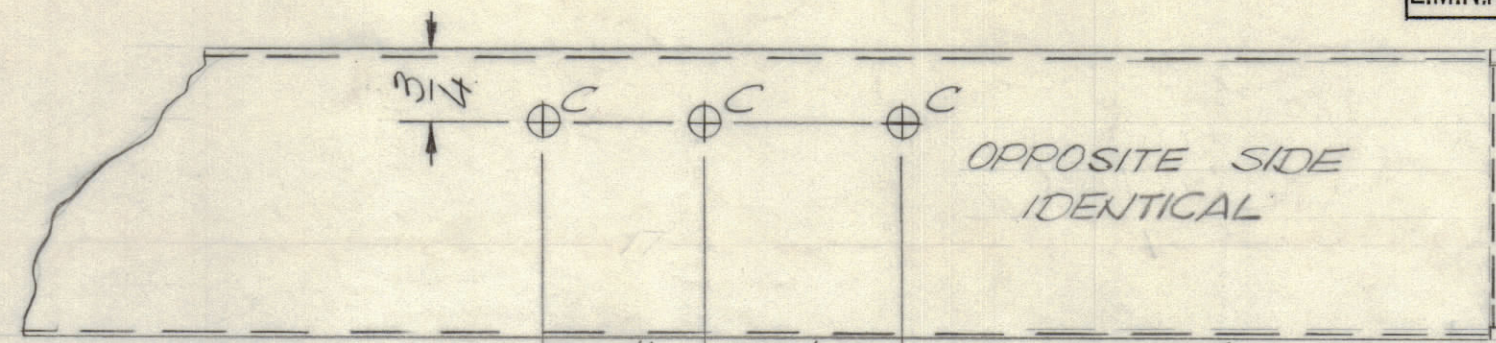


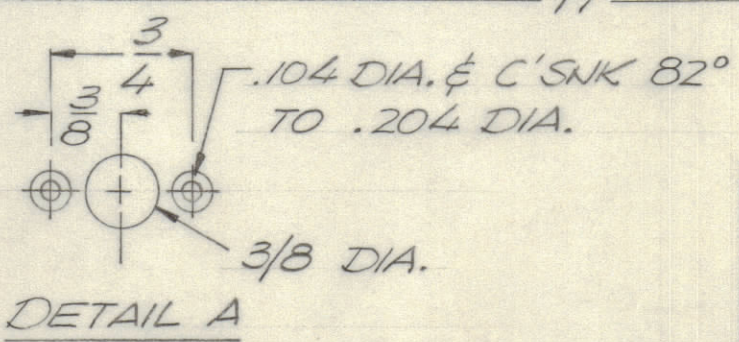
REVISIONS					DATE	APPROVED
E.M.N.O.	DRAFT	CHKD	ZONE	LTR	DESCRIPTION	
	01			Ø	ORIGINAL RELEASE FOR PRODUCTION	3/9/71 P.E.B.



HOLE	DESCRIPTION	REQ
A	.221-.224 DIA.	12
B	SEE DETAIL A	4
C	1/4 DIA.	6
D	.189 MTG. DIA.	4
E	.189 MTG. DIA.	4
F	13/64 DIA.	3
G	11/64 DIA.	2
H	9/64 DIA.	2

QTY.	ITEM	PART NO.	DESCRIPTION	SYMBOL
2	4	TE 102-2	TERMINAL TURRET	H
4	3	TE 108-12	STANDOFF RIVET TYPE	E
4	2	TE 108-20	STANDOFF, RIVET TYPE	D
12	1	NT 129-0832-4	NUT PLN SPLINE	A

QTY. REQ.	ITEM	PART NO.	DESCRIPTION	SYMBOL
S. DE MARCO LIST OF MATERIAL				



UNLESS OTHERWISE SPECIFIED DIMENSIONS ARE IN INCHES AND INCLUDE CHEMICALLY APPLIED OR PLATED FINISHES

TOLERANCES ON
 DECIMALS .X ± .05
 .XX ± .01
 .XXX ± .005
 FRACTIONS ± 1/64
 ANGLES ± 0° -30°

MATERIAL .081 ALUM
5052 H32
FINISH S404 YEL IRIDITE

FINAL APPROVAL <i>S. De Marco</i>	DATE 3-30-71
MECH. DES.	DATE
ELECT. DES.	DATE
CHECKED	DATE
DRAWN GE	DATE 1/28/71

THE TECHNICAL MATERIEL CORP. MAMARONECK, NEW YORK			
CHASSIS, MAIN			
SIZE C	CODE IDENT NO. 82679	DWG NO. MS 5935	ISSUE Ø
SCALE 1/2		SHEET OF	

- UNLESS OTHERWISE SPECIFIED:
- USE MATERIAL THICKNESS FOR MAXIMUM RADIUS ON ALL BENDS.
 - ALL ANGULAR BENDS 90 DEGREES.
 - REMOVE ALL BURRS AND SHARP EDGES.
 - MOUNT INSERTS AFTER FINISHING.

AX 5128		
QTY / UNIT	MODEL USED ON	ASS'Y NO.
APPLICATION		
CODE		
NOTICE TO PERSONS RECEIVING THIS DRAWING THE TECHNICAL MATERIEL CORPORATION claims proprietary right in the material disclosed hereon. This drawing is issued in confidence for engineering information only and may not be reproduced or used to manufacture anything shown hereon without permission from THE TECHNICAL MATERIEL CORPORATION to the user. This drawing is loaned for mutual assistance and is subject to recall at any time.		