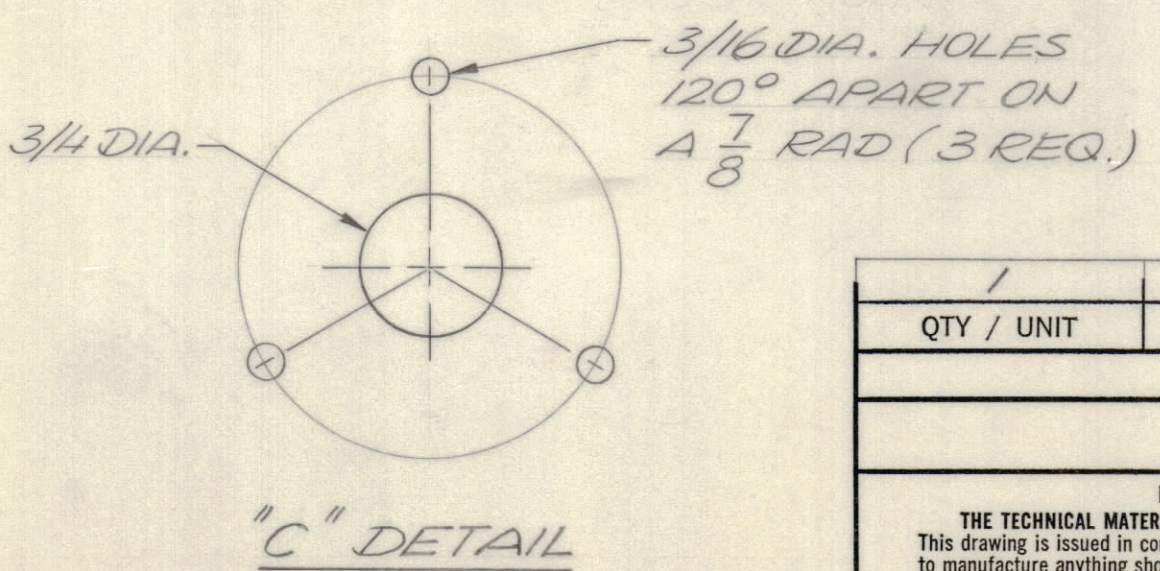
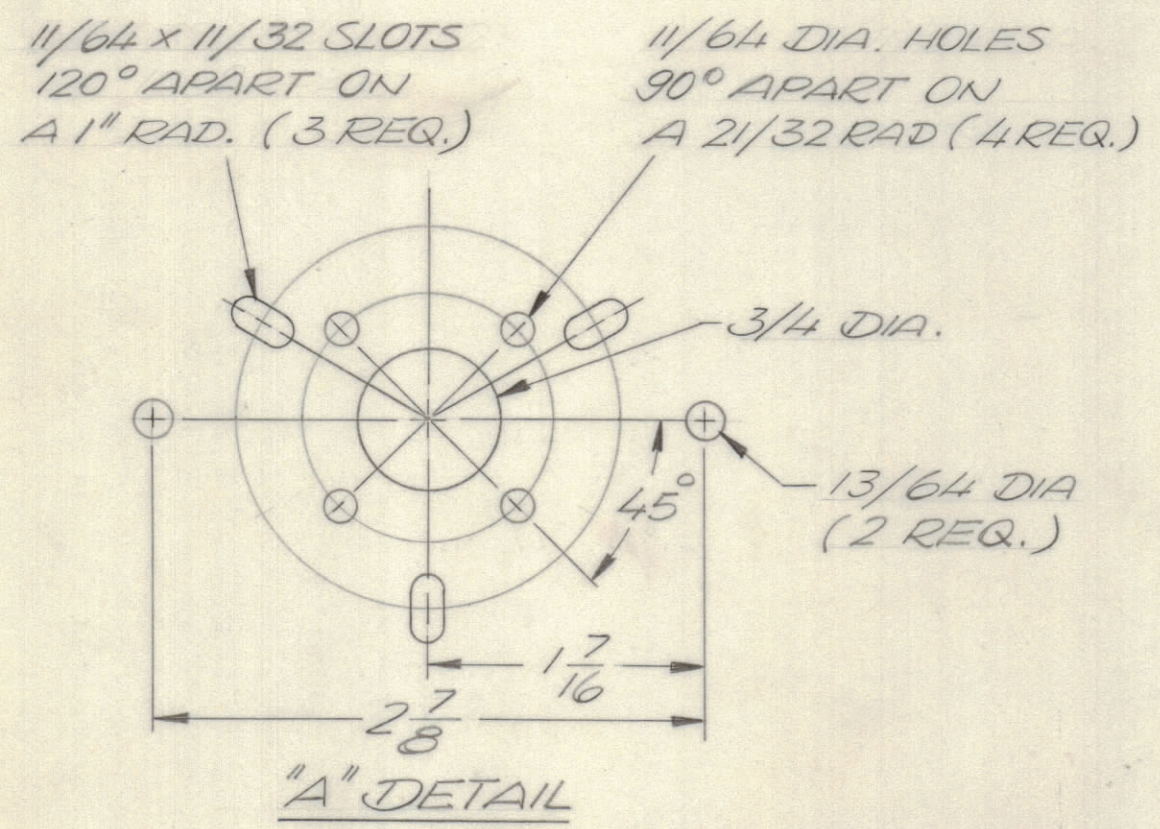
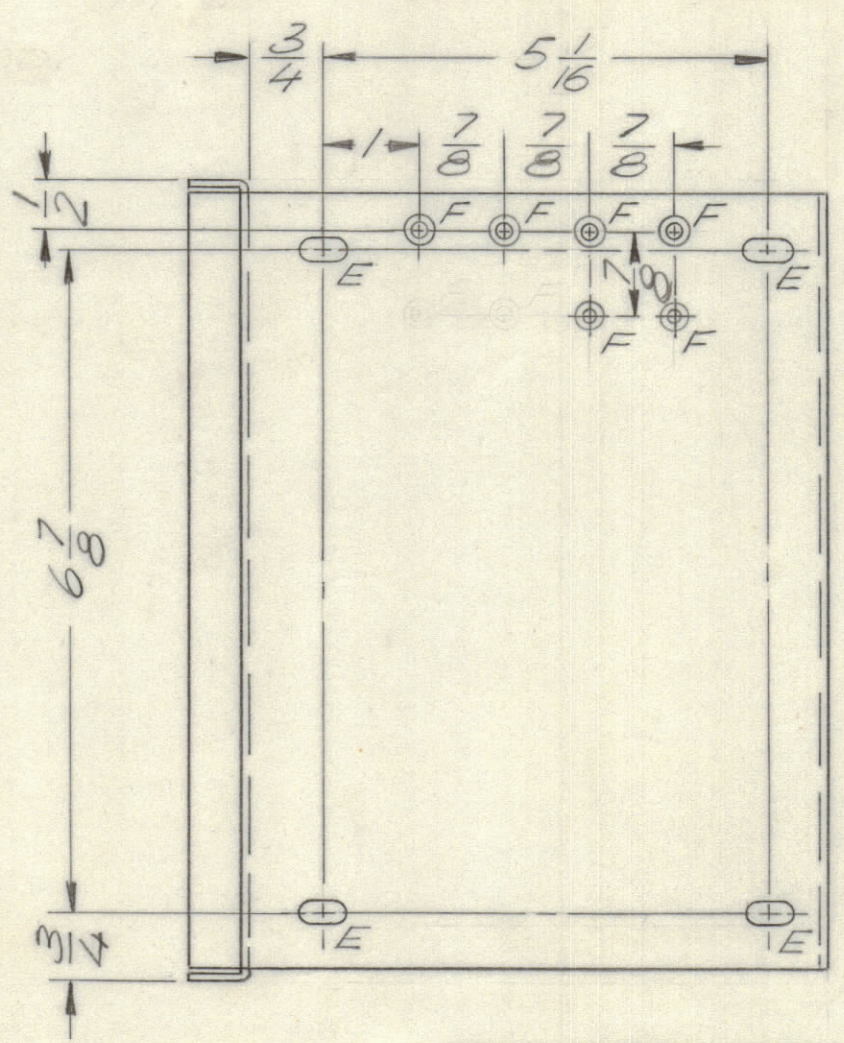
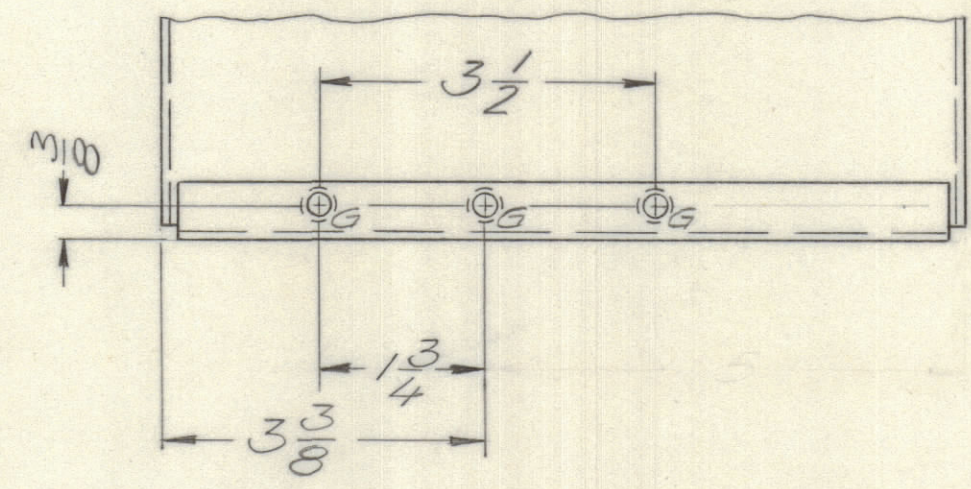
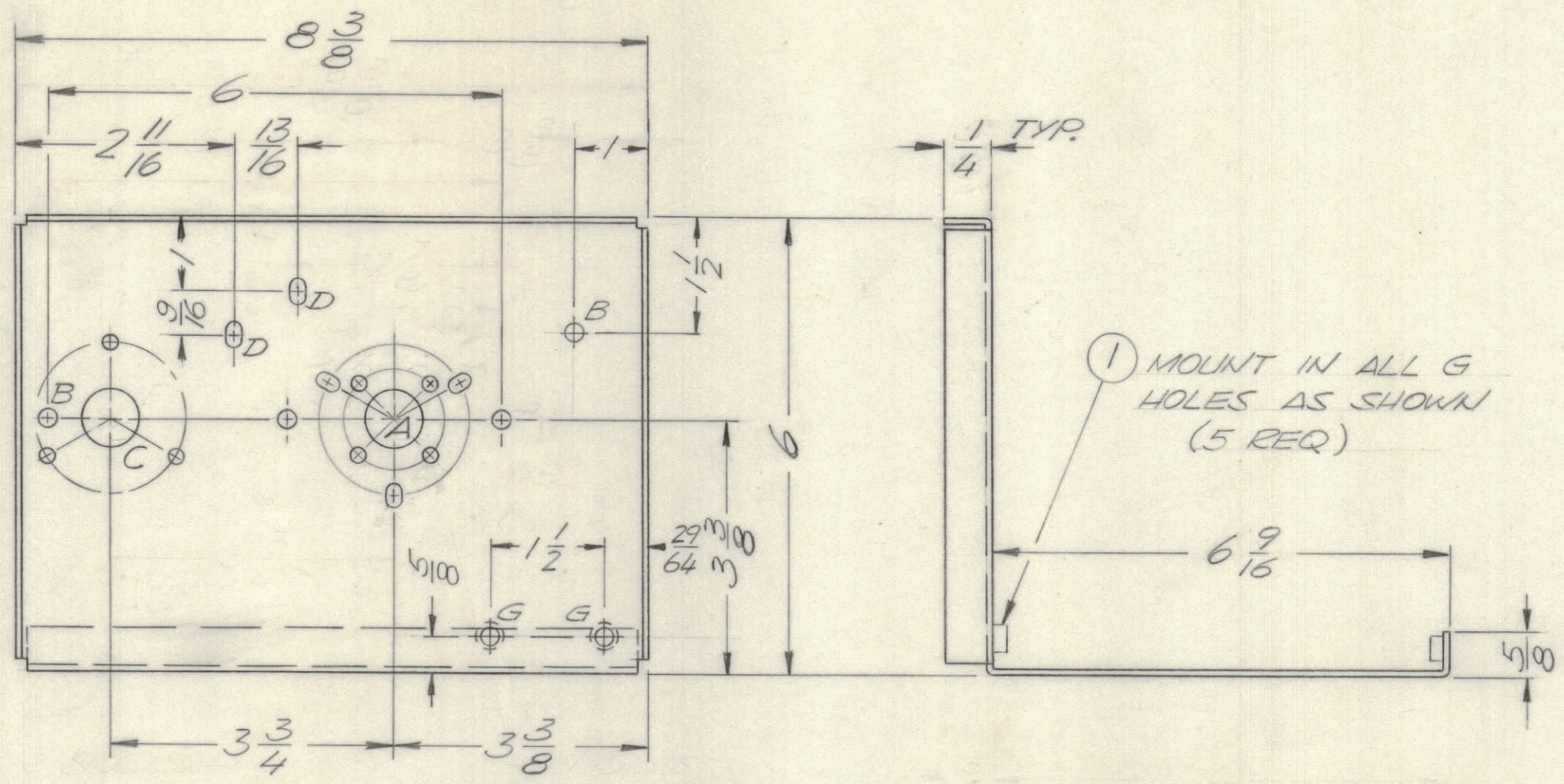


REVISIONS							
E.M.N.NO	DRAFT	CHKD	ZONE	LTR	DESCRIPTION	DATE	APPROVED
	1			X	EXP. RELEASE	9/1/70	
	0			0	ORIGINAL RELEASE FOR PRODUCTION	10/26/70	



- HOLE LEGEND:
- A - SEE DETAIL (1 REQ.)
 - B - 13/64 DIA. (2 REQ.)
 - C - SEE DETAIL (1 REQ.)
 - D - 11/64 x 11/32 SLOTS (2 REQ.)
 - E - 1/4 x 1/2 SLOTS (4 REQ.)
 - F - 0632 C'SINK (82°) (6 REQ.)
 - G - .191-.194 DIA. (5 REQ.)

UNLESS OTHERWISE SPECIFIED:

- USE MATERIAL THICKNESS FOR MAXIMUM RADIUS ON ALL BENDS.
- ALL ANGULAR BENDS 90 DEGREES.
- REMOVE ALL BURRS AND SHARP EDGES.
- MOUNT INSERTS AFTER FINISHING.

1	TLAM-1K	AS 147
QTY / UNIT	MODEL USED ON	ASS'Y NO.
APPLICATION		
CODE		

NOTICE TO PERSONS RECEIVING THIS DRAWING
 THE TECHNICAL MATERIEL CORPORATION claims proprietary right in the material disclosed hereon. This drawing is issued in confidence for engineering information only and may not be reproduced or used to manufacture anything shown hereon without permission from THE TECHNICAL MATERIEL CORPORATION to the user. This drawing is loaned for mutual assistance and is subject to recall at any time.

REF: LD 2433

UNLESS OTHERWISE SPECIFIED DIMENSIONS ARE IN INCHES AND INCLUDE CHEMICALLY APPLIED OR PLATED FINISHES

TOLERANCES ON

DECIMALS	FRACTIONS
.X ± .05	± 1/64
.XX ± .01	ANGLES
.XXX ± .005	± 0° -30'

MATERIAL .081 ALLUM.
5052 - H32

FINISH
S404 YEL. IRIDITE

5	1	NT129-0632-4	NUT ROUND SWAGE TYPE	G
QTY. REQ.	ITEM	PART NO.	DESCRIPTION	SYMBOL
F. BUDETTI LIST OF MATERIAL				
FINAL APPROVAL		DATE	THE TECHNICAL MATERIEL CORP. MAMARONECK, NEW YORK	
MECH. DES.		DATE		
ELECT. DES.		DATE		
CHECKED		DATE	CHASSIS, BAND SW.	
DRAWN		DATE		
SIZE	CODE IDENT NO.	DWG NO.	ISSUE	
C	82679	MS 5679	Ø	
SCALE 1/2			SHEET	OF

MS 5679