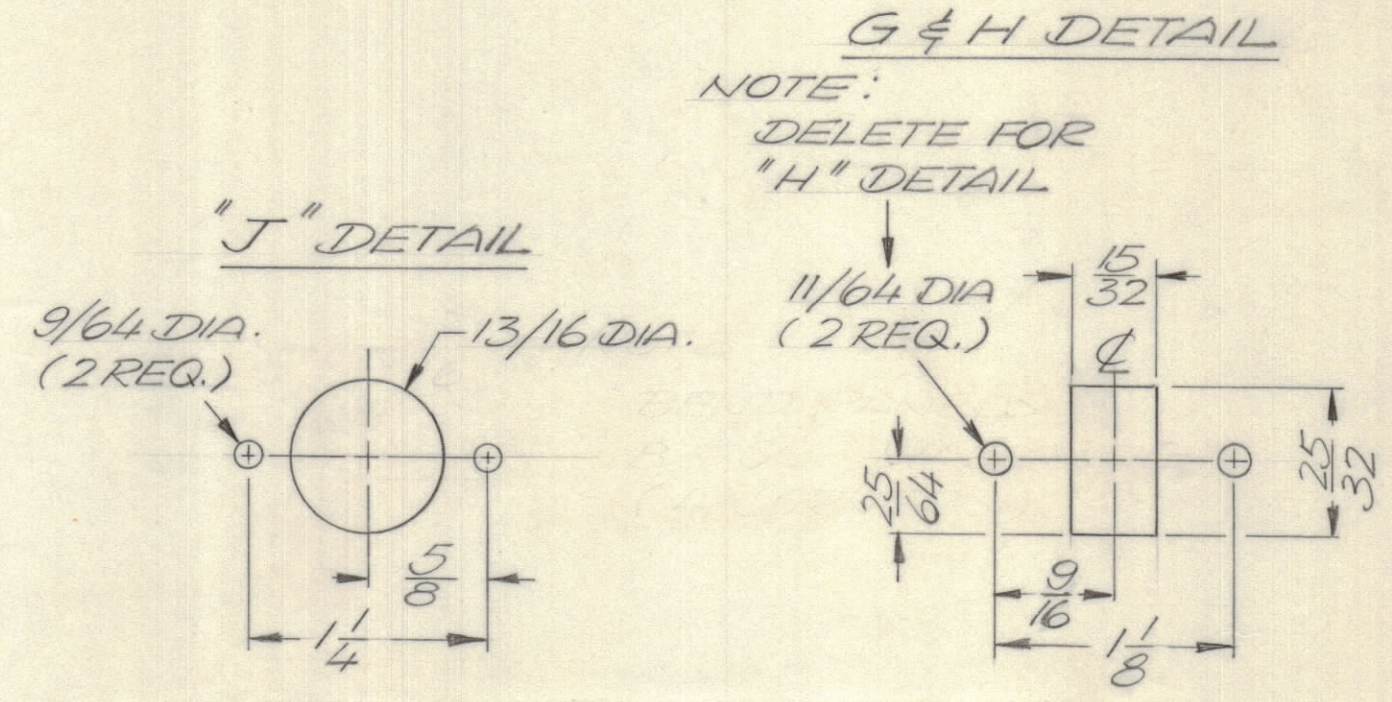
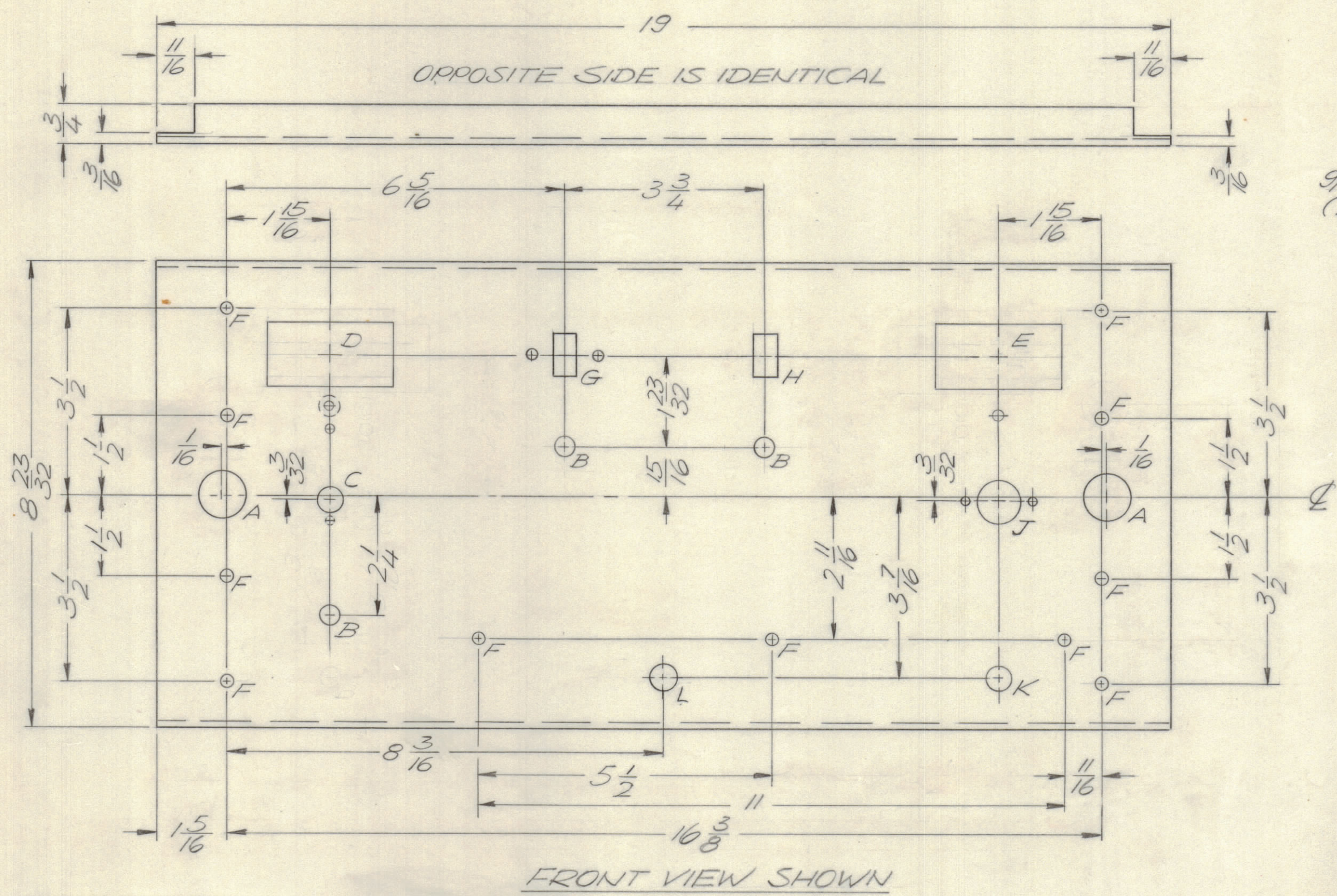


					REVISIONS		
E.M.N.NO	DRAFT	CHKD	ZONE	LTR	DESCRIPTION	DATE	APPROVED
	LA			X	EXP. RELEASE	8/28/70	
	CU			Ø	ORIGINAL RELEASE FOR PRODUCTION	10/15/70	P.E.L.
20292	RZ	W		A	CHG. F HOLE TO L	324-71	P.G.L.

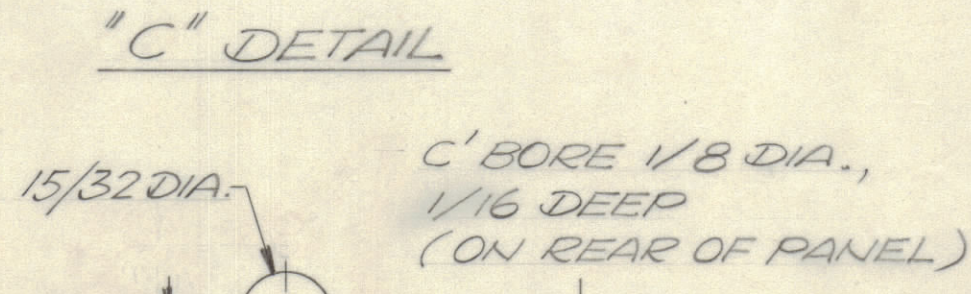
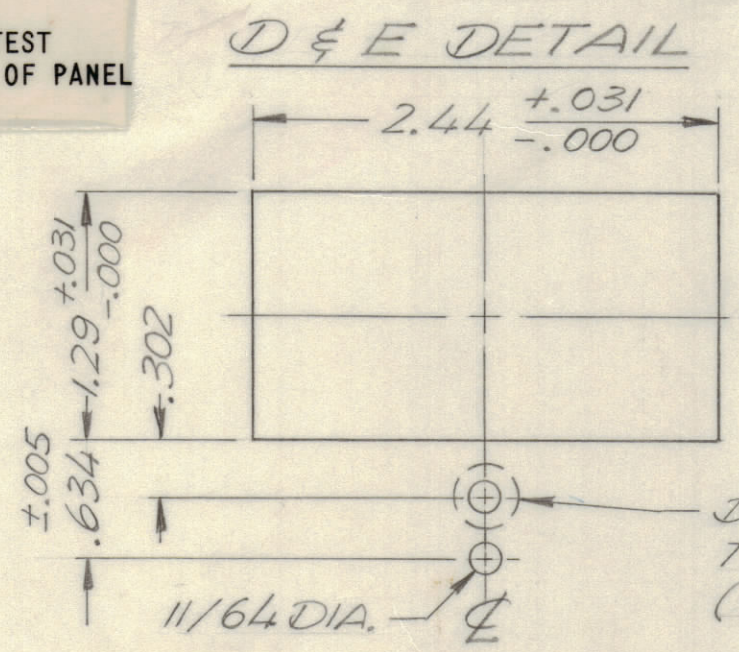


FINISH NOTES:

- S404 - IRIDITE 14-2 AL-COAT.
- S114 - ZINC CHROMATE PRIMER } FRONT AND EDGES ONLY
- S115 - SMOOTH GRAY ENAMEL } OR PRIME AND PAINT PER CUSTOMER'S SPECIFICATIONS

- HOLE LEGEND:**
- A - 7/8 DIA. (2 REQ.)
 - B - 3/8 DIA. (3 REQ.)
 - C - SEE DETAIL (1 REQ.)
 - D - SEE DETAIL (1 REQ.)
 - E - SEE DETAIL (1 REQ.)
 - F - 11/64 DIA. (11 REQ.)
 - G - SEE DETAIL (1 REQ.)
 - H - SEE DETAIL (1 REQ.)
 - J - SEE DETAIL (1 REQ.)
 - K - 15/32 DIA. (1 REQ.)
 - L - 1/4 DIA (1 REQ.)

MARK TMC PART NUMBER
1/8 HIGH GOTHIC WITH LATEST
REVISION LETTER ON REAR OF PANEL



NOTE:
BEND PANELS BEFORE
MACHINING (4 CORNERS)

- UNLESS OTHERWISE SPECIFIED:**
- USE MATERIAL THICKNESS FOR MAXIMUM RADIUS ON ALL BENDS.
 - ALL ANGULAR BENDS 90 DEGREES.
 - REMOVE ALL BURRS AND SHARP EDGES.
 - MOUNT INSERTS AFTER FINISHING.

QTY / UNIT	MODEL USED ON	ASS'Y NO.
1	TLAM - 1K	
APPLICATION		
CODE		
NOTICE TO PERSONS RECEIVING THIS DRAWING		
<small>THE TECHNICAL MATERIEL CORPORATION claims proprietary right in the material disclosed hereon. This drawing is issued in confidence for engineering information only and may not be reproduced or used to manufacture anything shown hereon without permission from THE TECHNICAL MATERIEL CORPORATION to the user. This drawing is loaned for mutual assistance and is subject to recall at any time.</small>		

QTY. REQ.	ITEM	PART NO.	DESCRIPTION	SYMBOL
REF.: LD2423				
F. BUDETTI				
UNLESS OTHERWISE SPECIFIED DIMENSIONS ARE IN INCHES AND INCLUDE CHEMICALLY APPLIED OR PLATED FINISHES		LIST OF MATERIAL		
TOLERANCES ON		THE TECHNICAL MATERIEL CORP.		
DECIMALS	FRACTIONS	MAMARONECK, NEW YORK		
.X ± .05	± 1/64	PANEL, FRONT		
.XX ± .01	ANGLES	DATE		
.XXX ± .005	± 0° -30'	DATE		
MATERIAL 1/8 THK ALLUM		DATE		
5052 - H32		DATE		
FINISH		DATE		
SEE NOTES		DATE		
		SIZE	CODE IDENT NO.	DWG NO.
		C	82679	MS 5662
		SCALE 1/2		SHEET OF
				ISSUE
				A

MS 5662 A B