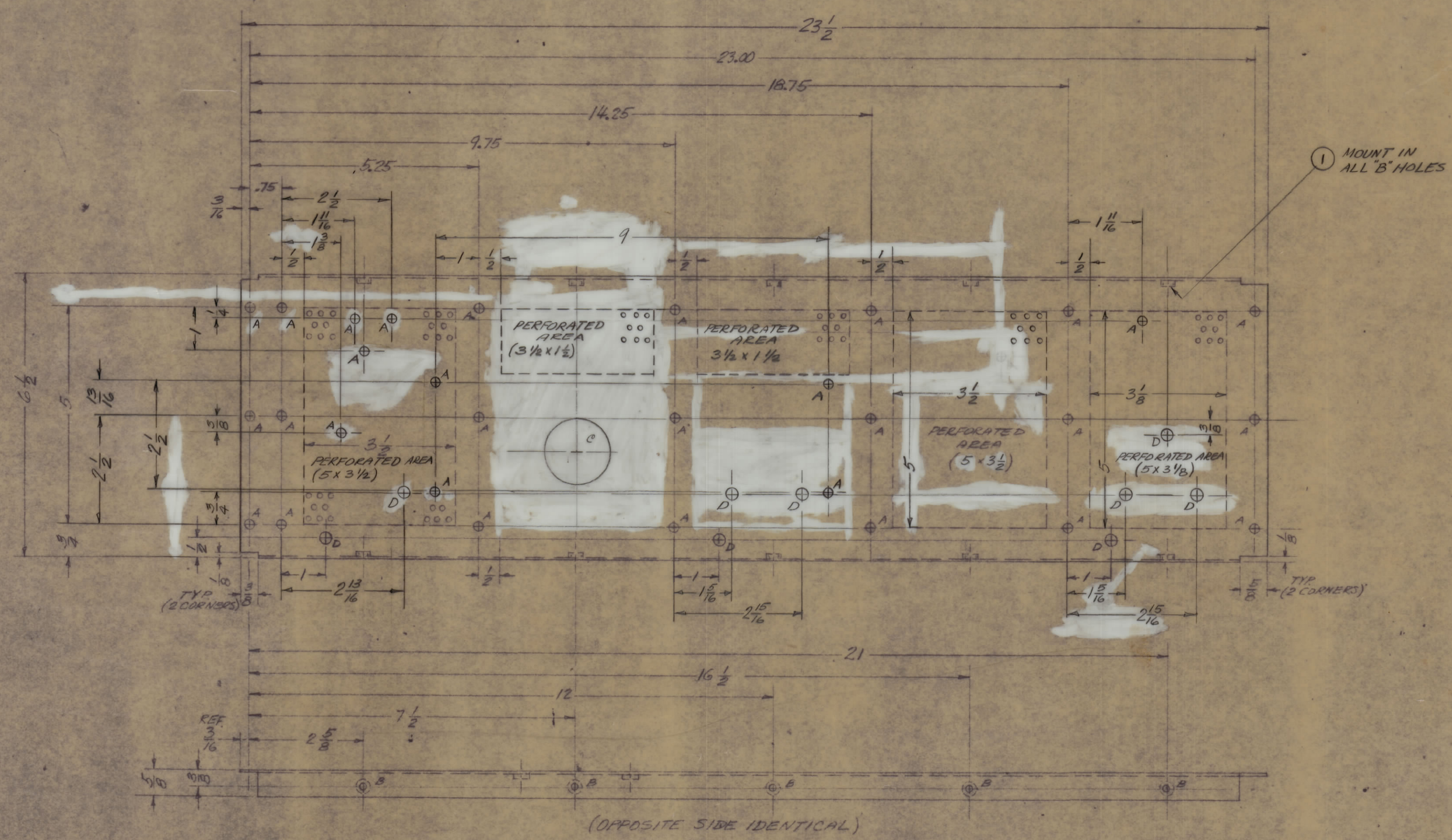


REVISIONS						
ZONE	LTR	DESCRIPTION	DATE	E.M.N.NO	DRAFT	CHKD APPD
	X	EXPER. RELEASE	7/7/69		CS	
	X ₁	"D" HOLES ADDED	10/1/69			
	X ₂	5" X 6" HOLES ADDED	11/7/69		V.A.	
	⊖	ORIGINAL RELEASE	5/7/73		CS	



(OPPOSITE SIDE IDENTICAL)

HOLE	DESCRIPTION	QTY
A	5/32 DIA.	34
B	.191 - .194 DIA.	14
C	1 1/2 DIA.	1
D	13/64 DIA.	9

- NOTE:
- PERFORATIONS TO BE 1/8 DIA. ON 2/16 CENTERS
 - OMIT PERFORATIONS INTERFERING WITH "A" & "D" HOLES LOCATED IN PERFORATED AREA.

QTY. REQ.	ITEM	PART NO.	DESCRIPTION	SYMBOL
14	1	NT 129-632-4	NUT, ROUND, SWAGE TYPE	B

LIST OF MATERIAL

THE TECHNICAL MATERIEL CORP.
MAMARONECK, NEW YORK

PLATE, L.H. SIDE

SIZE	CODE	IDENT. NO.	DWG. NO.	ISSUE
C	82679	MS5580		⊖

SCALE 1/2 SHEET / OF /

- UNLESS OTHERWISE SPECIFIED:
- USE MATERIAL THICKNESS FOR MAXIMUM RADIUS ON ALL BENDS.
 - ALL ANGULAR BENDS 90 DEGREES.
 - REMOVE ALL BURRS AND SHARP EDGES.
 - MOUNT INSERTS AFTER FINISHING.

QTY / UNIT	MODEL USED ON	ASS'Y NO.
1	GPTR 10K ()	AF109
APPLICATION		
CODE		
NOTICE TO PERSONS RECEIVING THIS DRAWING		
THE TECHNICAL MATERIEL CORPORATION claims proprietary right in the material disclosed hereon. This drawing is issued in confidence for engineering information only and may not be reproduced or used to manufacture anything shown hereon without permission from THE TECHNICAL MATERIEL CORPORATION to the user. This drawing is loaned for mutual assistance and is subject to recall at any time.		

UNLESS OTHERWISE SPECIFIED DIMENSIONS ARE IN INCHES AND INCLUDE CHEMICALLY APPLIED OR PLATED FINISHES

TOLERANCES ON	
DECIMALS	FRACTIONS
.X ± .05	± 1/64
.XX ± .01	ANGLES
.XXX ± .005	± 0° -30'

FINAL APPROVAL	DATE
<i>J. ANGER</i>	5/13/69
MECH. DES.	DATE
<i>J. ANGER</i>	5/13/69
ELECT. DES.	DATE
<i>J. ANGER</i>	5/13/69
CHECKED	DATE
<i>J. ANGER</i>	5/13/69
DRAWN	DATE
<i>J. ANGER</i>	5/13/69

MATERIAL .081 THK. ALUMINUM
5052-H32

FINISH YELLOW IRIDITE
S404