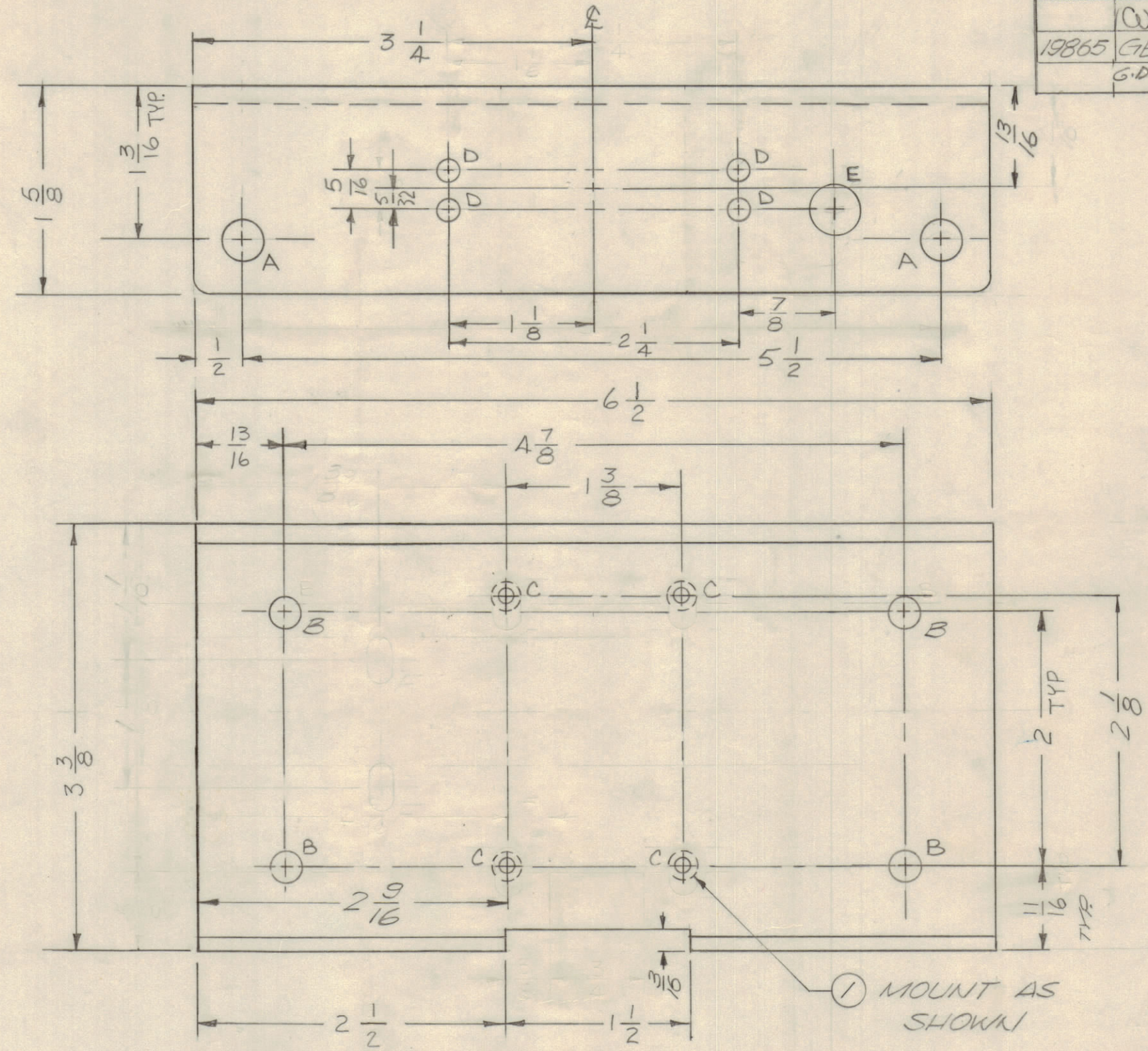
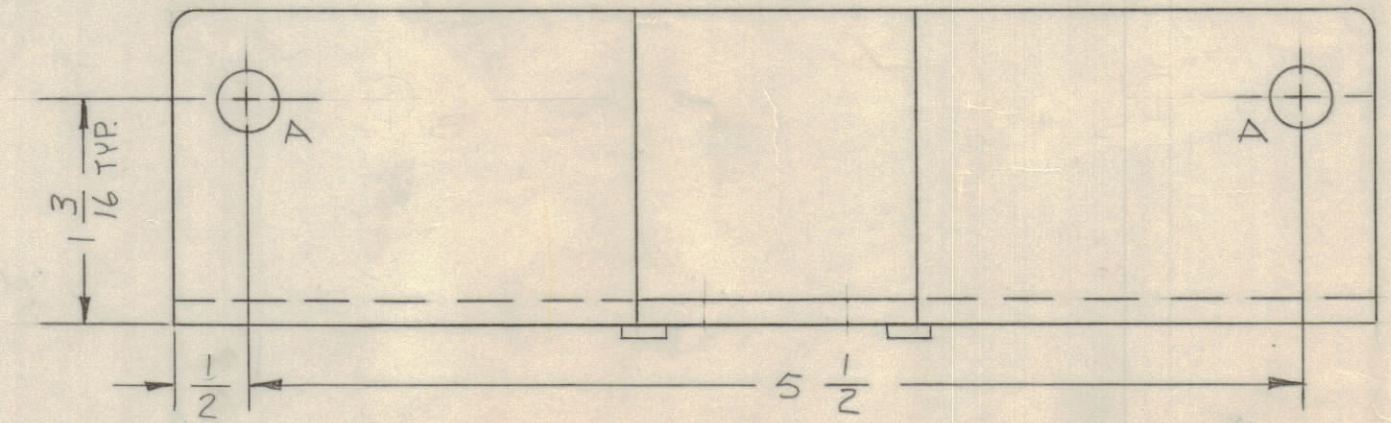
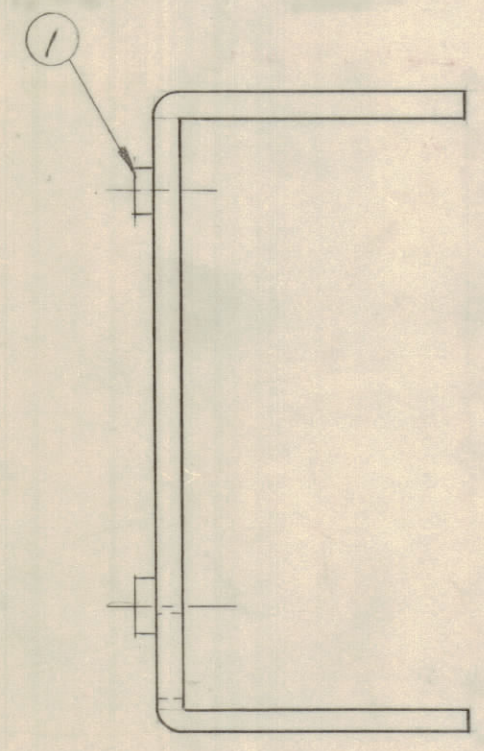


REVISIONS							
E.M.N.NO	DRAFT	CHKD	ZONE	LTR	DESCRIPTION	DATE	APPROVED
					ORIGINAL RELEASE FOR PRODUCTION	1/20/70	
19865	GE	<i>[Signature]</i>		A	COMPLETELY REV. (SEE EMN)	5/25/70	
	GDL			B	TWO "F" HOLES 3/16 X 3/8 SLOT DEL.	6-22-78	



HOLE	DESCRIPTION	REQ'D
A	5/16 DIA	4
B	15/64 DIA.	4
C	.221- .224 DIA.	4
D	11/64 DIA	4
E	3/4 DIA.	1



UNLESS OTHERWISE SPECIFIED:

- USE MATERIAL THICKNESS FOR MAXIMUM RADIUS ON ALL BENDS.
- ALL ANGULAR BENDS 90 DEGREES.
- REMOVE ALL BURRS AND SHARP EDGES.

1	PALA-10K	AP148
QTY / UNIT	MODEL USED ON	ASS'Y NO.
APPLICATION		
CODE		
NOTICE TO PERSONS RECEIVING THIS DRAWING		
THE TECHNICAL MATERIEL CORPORATION claims proprietary right in the material disclosed hereon. This drawing is issued in confidence for engineering information only and may not be reproduced or used to manufacture anything shown hereon without permission from THE TECHNICAL MATERIEL CORPORATION to the user. This drawing is loaned for mutual assistance and is subject to recall at any time.		

REF. LD 2375

UNLESS OTHERWISE SPECIFIED DIMENSIONS ARE IN INCHES AND INCLUDE CHEMICALLY APPLIED OR PLATED FINISHES

TOLERANCES ON

DECIMALS	FRACTIONS
.X ± .05	± 1/64
.XX ± .01	ANGLES
.XXX ± .005	± 0° -30'

MATERIAL 1/8 Thick ALUM 5052-H32

FINISH S404

4	1	NT129 0832-6	NUT PLN. SPLINE	C
QTY. REQ.	ITEM	PART NO.	DESCRIPTION	SYMBOL
F. BUDETTI LIST OF MATERIAL				
FINAL APPROVAL <i>[Signature]</i>		DATE 1-11-70		
MECH. DES. <i>[Signature]</i>		DATE 6/27/69		
ELECT. DES.		DATE		
CHECKED		DATE		
DRAWN <i>[Signature]</i>		DATE 6-24-69		
SIZE C		CODE IDENT NO. 82679	DWG NO. MS 5571	ISSUE B
SCALE		NOT TO SCALE		SHEET OF

THE TECHNICAL MATERIEL CORP.
MAMARONECK, NEW YORK

BRACKET, RELAY, SHORTING

MS 5571
B
B