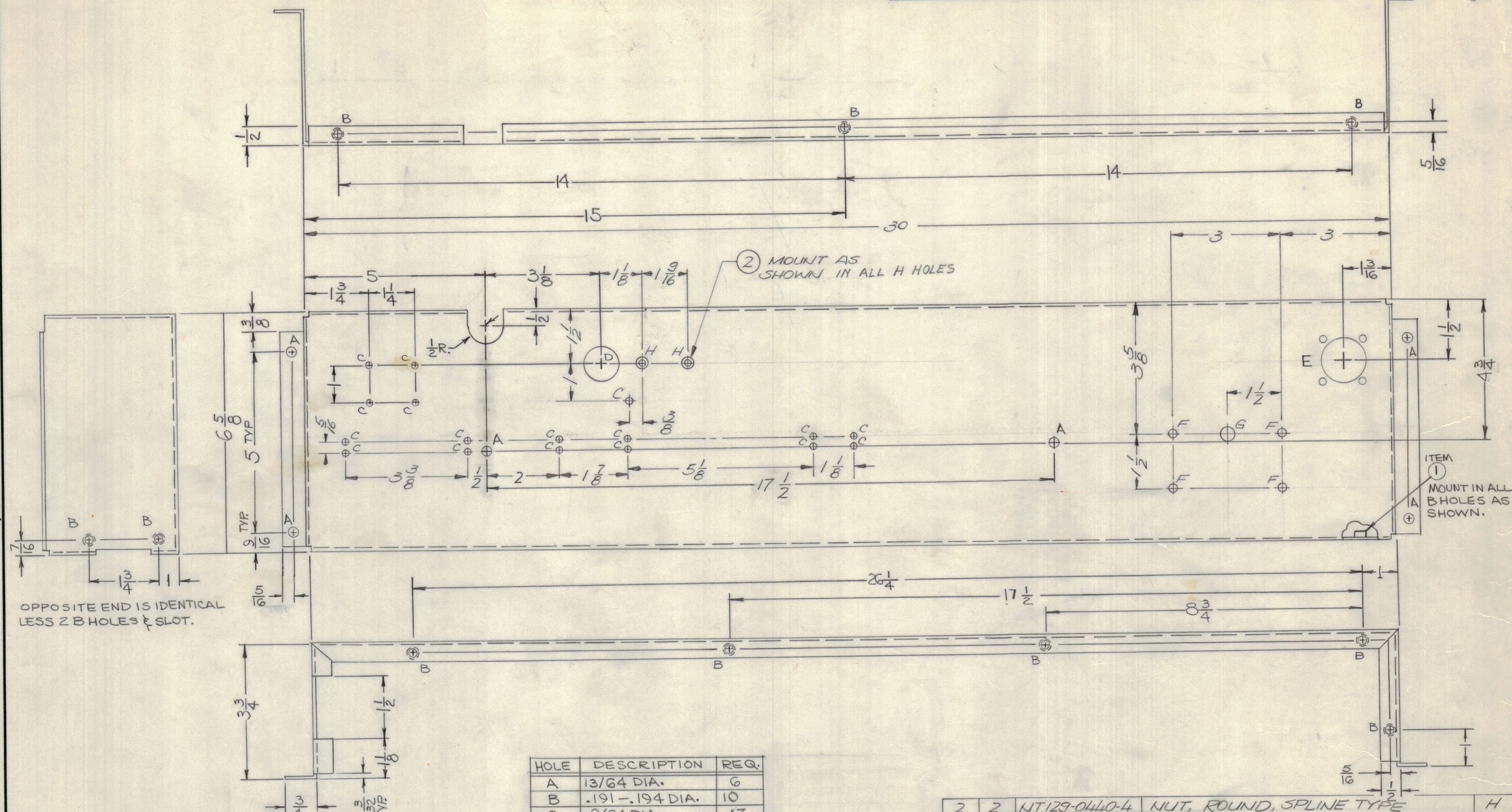


ZONE	LTR	DESCRIPTION	DATE	E.M.N.NO	DRAFT	CHKD	APPD	REVISIONS							
B		ADDED 30" DIM. & 12 C HOLES	5/23/72	20706	GE	QJ	EJ	E.M.N.NO	DRAFT	CHKD	ZONE	LTR	DESCRIPTION	DATE	APPROVED
								20585	(1) GE			A	ORIGINAL RELEASE FOR PRODUCTION ADD F,G,H, HOLES ADD IT 2	1/30/70 4-7-72	EJ



OPPOSITE END IS IDENTICAL  
LESS 2 B HOLES & SLOT.

(2) MOUNT AS  
SHOWN IN ALL H HOLES

ITEM  
(1)  
MOUNT IN ALL  
B HOLES AS  
SHOWN.

HOLE	DESCRIPTION	REQ.
A	13/64 DIA.	6
B	.191-.194 DIA.	10
C	9/64 DIA.	17
D	1" DIA.	1
E	SEE DETAIL	1
F	11/64 DIA.	4
G	3/8 DIA.	1
H	.161-.164 DIA.	2

REF. LD 2395  
UNLESS OTHERWISE SPECIFIED  
DIMENSIONS ARE IN INCHES  
AND INCLUDE CHEMICALLY APPLIED  
OR PLATED FINISHES

QTY.	ITEM	PART NO.	DESCRIPTION	SYMBOL
2	2	NT129-0440-4	NUT, ROUND, SPLINE TYPE	H
10	1	NT129-0632-4	NUT, ROUND, SPLINE TYPE	B

F. BUDETTI	
FINAL APPROVAL	DATE 1-70
MECH. DES. ALP	DATE 1-70
ELECT. DES. ABC	DATE 1-70
CHECKED	DATE
DRAWN ALP.	DATE 1-70

LIST OF MATERIAL  
**THE TECHNICAL MATERIEL CORP.**  
MAMARONECK, NEW YORK  
**SHIELD, METER PANEL**

1	HFL (-) -10K	AX5114
1	PALAIOK	AX5084
QTY / UNIT	MODEL USED ON	ASS'Y NO.
APPLICATION		
CODE		

NOTICE TO PERSONS RECEIVING THIS DRAWING  
THE TECHNICAL MATERIEL CORPORATION claims proprietary right in the material disclosed hereon.  
This drawing is issued in confidence for engineering information only and may not be reproduced or used  
to manufacture anything shown hereon without permission from THE TECHNICAL MATERIEL CORPORATION  
to the user. This drawing is loaned for mutual assistance and is subject to recall at any time.

MATERIAL .064  
ALUM. 5052H32  
FINISH S404  
YEL. IRIDITE

SIZE	CODE	IDENT NO.	DWG NO.	ISSUE
C	82679		MS5509	B
SCALE				SHEET OF

MS5509

B

A