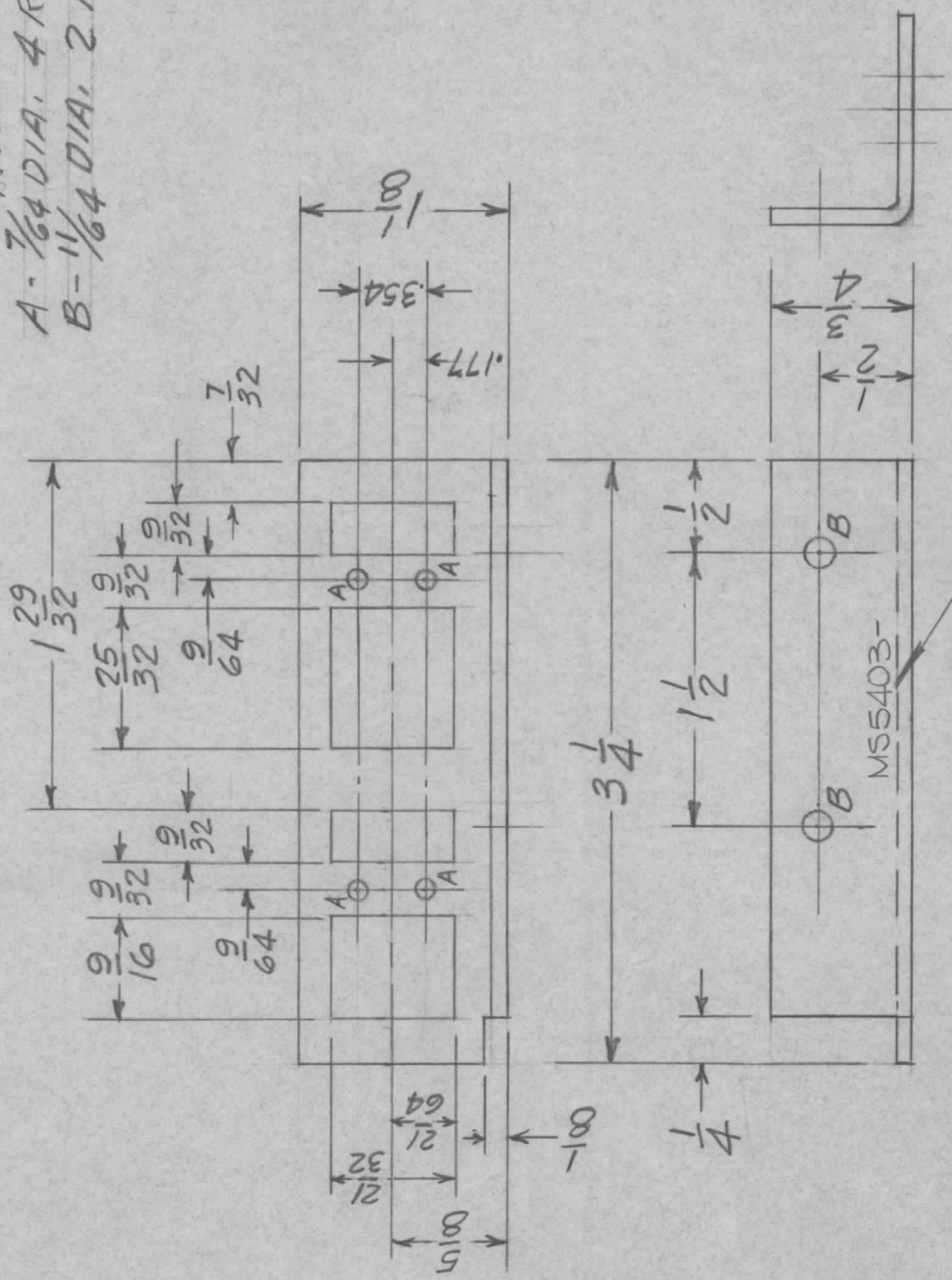


APPLICATION

REVISIONS

QTY	MODEL USED ON	ASSY NO.	LTR	DESCRIPTION	DATE	E.M.N.NO	DRAFT	CHKD	APPD
1	MMX-1M		Ø	ORIG. RELEASE FOR PROD.	6-14-68	Ø	R.G.	WV	HUB

HOLES
 A - 7/64 DIA. 4 REQ
 B - 1/64 DIA. 2 REQ



- UNLESS OTHERWISE SPECIFIED:
1. USE MATERIAL THICKNESS FOR MAXIMUM RADIUS ON ALL BENDS
 2. ALL ANGULAR BENDS 90 DEGREES
 3. REMOVE ALL BURRS AND SHARP EDGES

MARK TMC PART NUMBER
 1/8 HIGH GOTHIC WITH LATEST
 REVISION LETTER

UNLESS OTHERWISE SPECIFIED DIMENSIONS ARE IN INCHES AND INCLUDE CHEMICALLY APPLIED OR PLATED FINISHES		REQ'D ITEM	PART NUMBER	DESCRIPTION	SYM.
DECIMALS X ± .05 .XX ± .01 .XXX ± .005		O. POSE		LIST OF MATERIAL SK3246 MS 18C	
FRACTIONS X ± .05 TOLS. 1/64 .XX ± .01 ANGLES 0° - 30' .XXX ± .005		FINAL APPROVAL	DATE	THE TECHNICAL MATERIEL CORP. MAMARONECK, NEW YORK	
MATERIAL .081 ALUM. 5052 H32		MECH. DES.	DATE 6-10-68		
FINISH 5404 YEL. IRIDITE		ELECT. DES.	DATE 6-14-68		
S401-451		CHECKED	DATE 6-18-68		
		DRAWN	DATE 6-10-68	BRACKET, MTG., RELAY	

NOTICE TO PERSONS RECEIVING THIS DRAWING
 THE TECHNICAL MATERIEL CORPORATION claims proprietary right in the material disclosed hereon. This drawing is issued in confidence for engineering information only and may not be reproduced or used to manufacture anything shown hereon without permission from THE TECHNICAL MATERIEL CORPORATION to the user. This drawing is loaned for mutual assistance and is subject to recall at any time.

SIZE A	CODE IDENT. NO. 82679	DWG NO. MS5403	ISSUE Ø
SCALE 1:1	SHEET 1:1	OF 1:1	

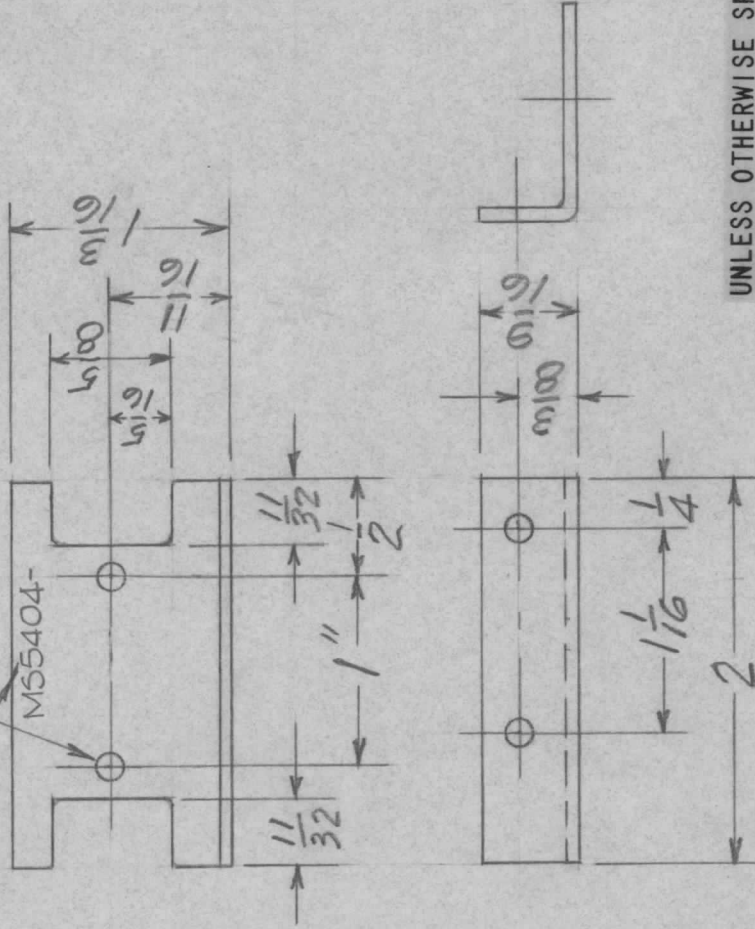
APPLICATION

REVISIONS

QTY	MODEL USED ON	ASS'Y NO.	LTR	DESCRIPTION	DATE	E.M.N.NO	DRAFT	CHKD	APPD
1	MMX-1M		Ø	ORIG. RELEASE FOR PROD.	6-14-68	Ø	R.G.		Jde

MARK TMC PART NUMBER
1/8 HIGH GOTHIC WITH LATEST
REVISION LETTER

9/64 DIA. 4 HOLES



UNLESS OTHERWISE SPECIFIED:

1. USE MATERIAL THICKNESS FOR MAXIMUM RADIUS ON ALL BENDS.
2. ALL ANGULAR BENDS 90 DEGREES.
3. REMOVE ALL BURRS AND SHARP EDGES.

REQ'D ITEM	PART NUMBER	DESCRIPTION	SYM.
O. POSE		LIST OF MATERIAL	SK3246MS 12C
FINAL APPROVAL		THE TECHNICAL MATERIEL CORP.	
MECH. DES.		MAMARONECK, NEW YORK	
ELECT. DES.		BRACKET, MTG., FILTER	
CHECKED			
DRAWN			

DATE	DATE	DATE	DATE	DATE
6-10-68	6-14-68	6-13-68	6-10-68	6-10-68

UNLESS OTHERWISE SPECIFIED DIMENSIONS ARE IN INCHES AND INCLUDE CHEMICALLY APPLIED OR PLATED FINISHES

DECIMALS
X ± .05
.XX ± .01
.XXX ± .005

FRACTIONS
1/64

TOLS.
ANGLES
0° - 30'

MATERIAL 063 ALUM.
5052 H 32

FINISH
5404 YEL. IRIDITE
S401-451

SIZE	CODE IDENT. NO.	DWG NO.	ISSUE
A	82679	M55404	Ø
SCALE 1:1		SHEET	OF

NOTICE TO PERSONS RECEIVING THIS DRAWING

THE TECHNICAL MATERIEL CORPORATION claims proprietary right in the material disclosed hereon. This drawing is issued in confidence for engineering information only and may not be reproduced or used to manufacture anything shown hereon without permission from THE TECHNICAL MATERIEL CORPORATION to the user. This drawing is loaned for mutual assistance and is subject to recall at any time.

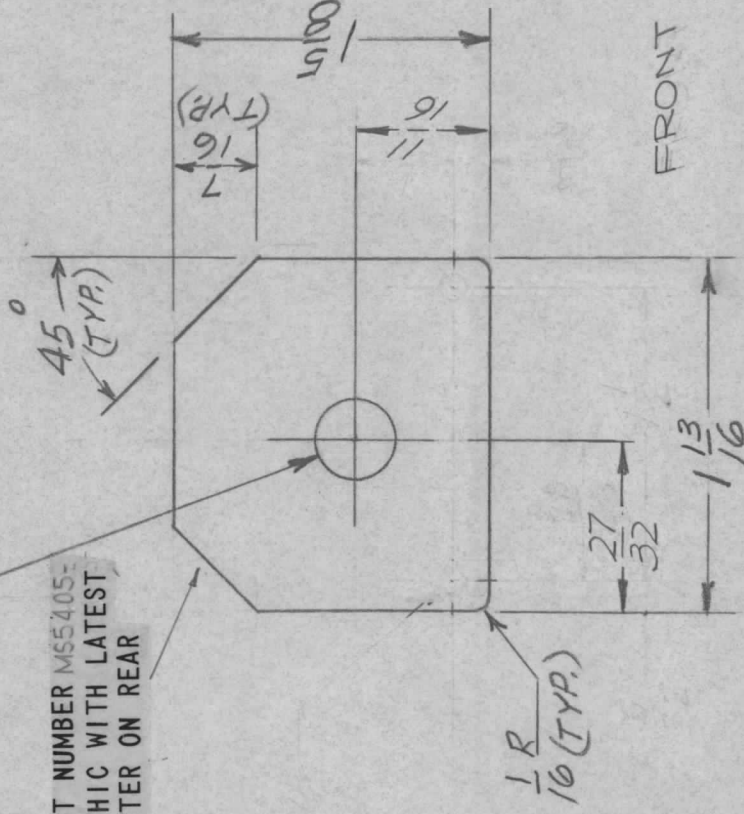
APPLICATION

REVISIONS

QTY	MODEL USED ON	ASS'Y NO.	LTR	DESCRIPTION	DATE	E.M.N.NO	DRAFT	CHKD	APPD
1	MMX-1M		Ø	ORIG. RELEASE FOR PROD.	6.11.68	Ø	R.G.		
			A	DELE 2' 9/64 DIA. HOLES	5/29/71	20371	GE	Ø 36	Ø 36

$\frac{13}{32}$ DIA. HOLE

MARK TMC PART NUMBER M55405-1/8 HIGH GOTHIC WITH LATEST REVISION LETTER ON REAR



FINISH NOTES:

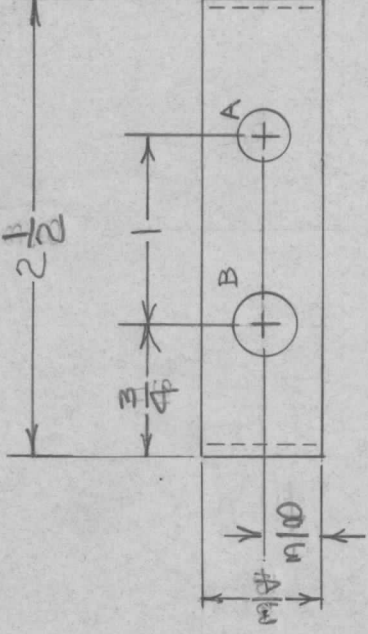
- S404 - IRIDITE 14-2 AL-COAT.
- S114 - ZINC CHROMATE PRIMER } FRONT AND
- S115 - SMOOTH GRAY ENAMEL } EDGES ONLY

OR
PRIME AND PAINT PER CUSTOMER'S SPECIFICATIONS.

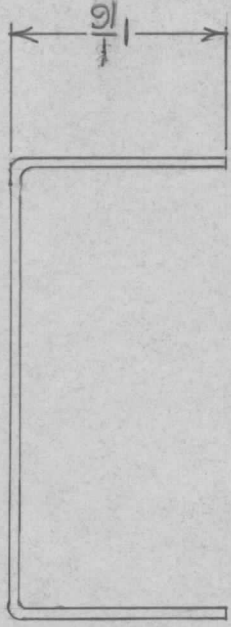
REF: LD 2322, LD 2462

REQ'D	ITEM	PART NUMBER	DESCRIPTION	SYM.
		O. POSE	LIST OF MATERIAL SK3246MS 1GC	
UNLESS OTHERWISE SPECIFIED DIMENSIONS ARE IN INCHES AND INCLUDE CHEMICALLY APPLIED OR PLATED FINISHES				
DECIMALS	FRACTIONS			
.X ± .05	1/64			
.XX ± .01	ANGLES			
.XXX ± .005	0° - 30°			
MATERIAL, 063 ALUM. 5052 H 32			THE TECHNICAL MATERIEL CORP. MAMARONECK, NEW YORK	
FINISH SEE NOTES			PLATE, MFG., SWITCH	
S401-451				
NOTICE TO PERSONS RECEIVING THIS DRAWING				
THE TECHNICAL MATERIEL CORPORATION claims proprietary right in the material disclosed hereon. This drawing is issued in confidence for engineering information only and may not be reproduced or used to manufacture anything shown hereon without permission from THE TECHNICAL MATERIEL CORPORATION to the user. This drawing is loaned for mutual assistance and is subject to recall at any time.				
SIZE	CODE IDENT. NO.	DWG NO.	ISSUE	
A	82679	MS5405	A	
SCALE	1:1	SHEET	OF	

APPLICATION		REVISIONS							
QTY	MODEL USED ON	ASS'Y NO.	LTR	DESCRIPTION	DATE	E.M.N.NO	DRAFT	CHKD	APPD
1	LPA-2		Ø	ORIGINAL RELEASE	7/15/69		W		



HOLE	DESCRIPTION	REQ.
A	1/4 DIA.	1
B	5/16 DIA.	1



UNLESS OTHERWISE SPECIFIED DIMENSIONS ARE IN INCHES AND INCLUDE CHEMICALLY APPLIED OR PLATED FINISHES	DECIMALS	FRACTIONS	DATE	LIST OF MATERIAL	DESCRIPTION	SYM.
	.X ± .05	1/64	7/15/69			
	.XX ± .01	TOLS.	DATE			
	.XXX ± .005	ANGLES	DATE			
MATERIAL	F. BUDETTI			THE TECHNICAL MATERIEL CORP.		MAMARONECK, NEW YORK
FINISH	A. PETROCCA			BRACKET, METER MOUNT		
S404 - YEL. IRIDITE	A. PETROCCA			SIZE	CODE IDENT. NO.	DWG NO.
			6-68	A	82679	MS 5409
				SCALE NO SCALE		SHEET
				SCALE NO SCALE		OF

NOTICE TO PERSONS RECEIVING THIS DRAWING
 THE TECHNICAL MATERIEL CORPORATION claims proprietary right in the material disclosed hereon. This drawing is issued in confidence for engineering information only and may not be reproduced or used to manufacture anything shown hereon without permission from THE TECHNICAL MATERIEL CORPORATION to the user. This drawing is loaned for mutual assistance and is subject to recall at any time.

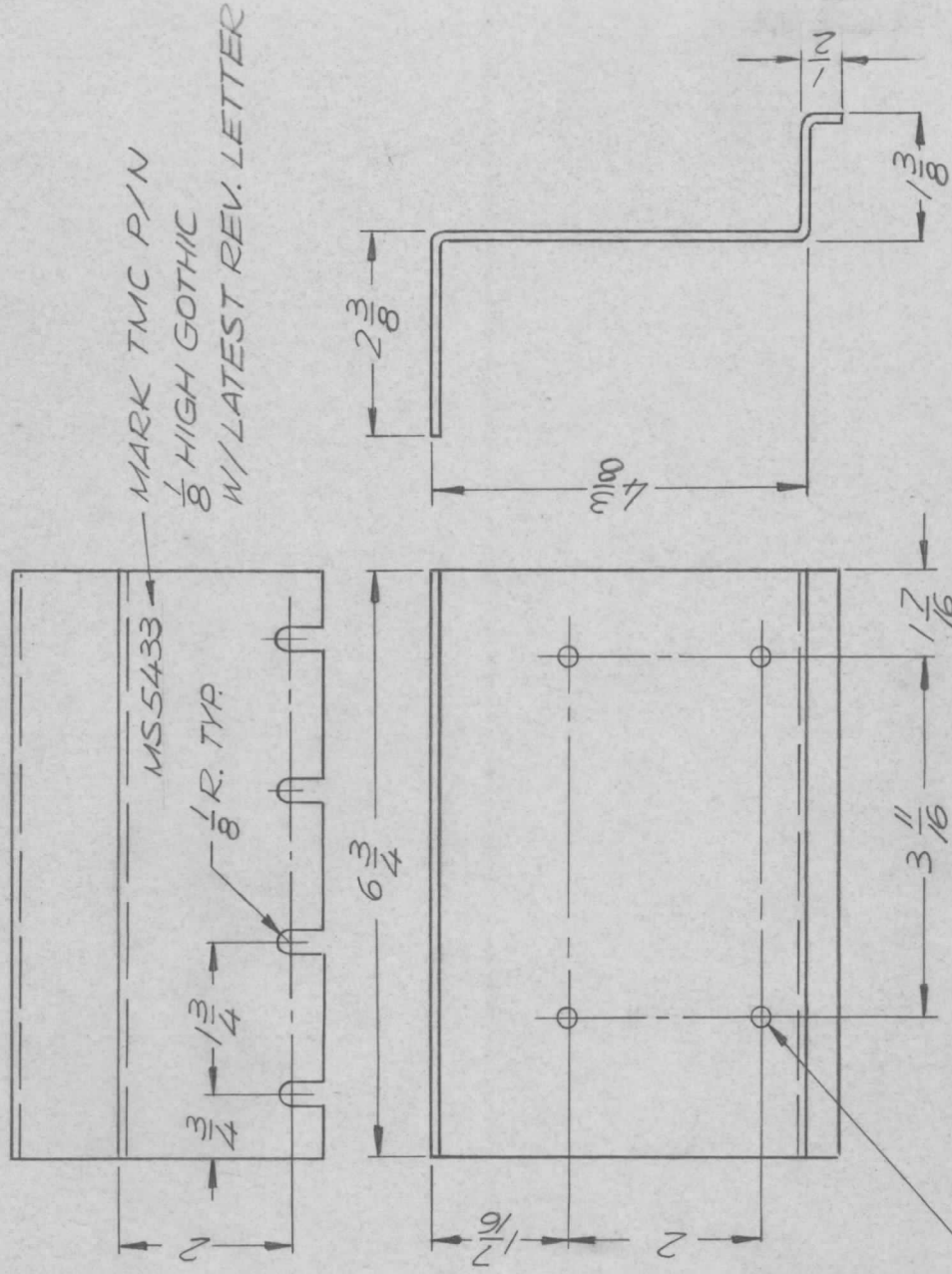
APPLICATION

QTY / MODEL USED ON ASS'Y NO. LTR

1 RAK-110-2 JE BMA154 X

REVISIONS

DESCRIPTION	DATE	E.M.N.NO	DRAFT	CHKD	APPD
EXP. RELEASE	11/15/68		K.H.	J. De	
ORIG. RELEASE FOR PROD.	1-10-69		R.G.		



UNLESS OTHERWISE SPECIFIED:

1. USE MATERIAL THICKNESS FOR MAXIMUM RADIUS ON ALL BENDS
2. ALL ANGULAR BENDS 90 DEGREES
3. REMOVE ALL BLURS AND SHARP EDGES.

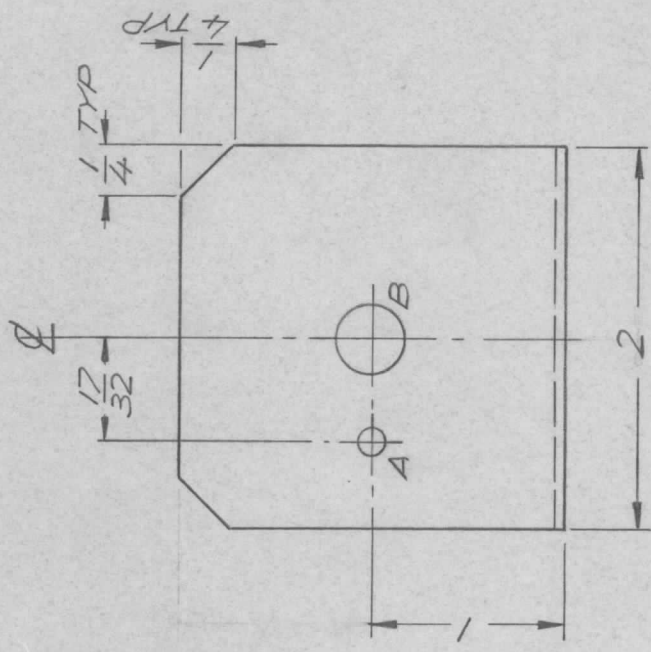
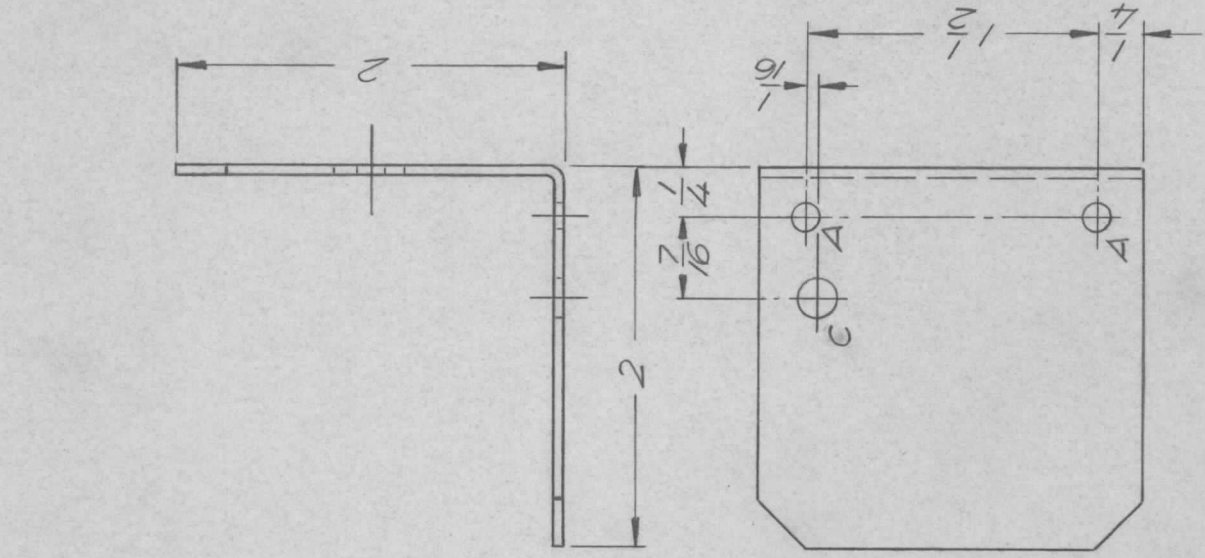
REQ'D ITEM	PART NUMBER	DESCRIPTION	SYM.
LIST OF MATERIAL			
THE TECHNICAL MATERIEL CORP.			
MAMARONECK, NEW YORK			
BKT, MTG, AX5052			
FINAL APPROVAL	DATE		
Mech. Des.	DATE		
ELECT. DES.	DATE		
CHECKED	DATE		
DRAWN	DATE		
MATERIAL		SIZE	ISSUE
ALUM. .081 THICK		A	MS 5433
FINISH		SCALE	OF
S404 YEL IRIDITE			

NOTICE TO PERSONS RECEIVING THIS DRAWING
 THE TECHNICAL MATERIEL CORPORATION claims proprietary right in the material disclosed hereon. This drawing is issued in confidence for engineering information only and may not be reproduced or used to manufacture anything shown hereon without permission from THE TECHNICAL MATERIEL CORPORATION to the user. This drawing is loaned for mutual assistance and is subject to recall at any time.

APPLICATION

REVISIONS

QTY	MODEL USED ON	ASS'Y NO.	LTR	DESCRIPTION	DATE	E.M.N.NO	DRAFT	CHKD	APPD
1	SME-6		X	EXP. RELEASE	12/3/68		K.H.		
			Ø	ORIG. RELEASE FOR PROD.	12-23-68		RG		



HOLE	DESCRIPTION	REQ
A	9/64 DIA.	3
B	3/8 DIA	1
C	3/16 DIA	1

NOTE:
REMOVE ALL BURRS
AND SHARP EDGES

REQ'D ITEM	PART NUMBER	DESCRIPTION	SYM.
POSE		LIST OF MATERIAL	
THE TECHNICAL MATERIEL CORP. MAMARONECK, NEW YORK BRACKET, SWITCH			

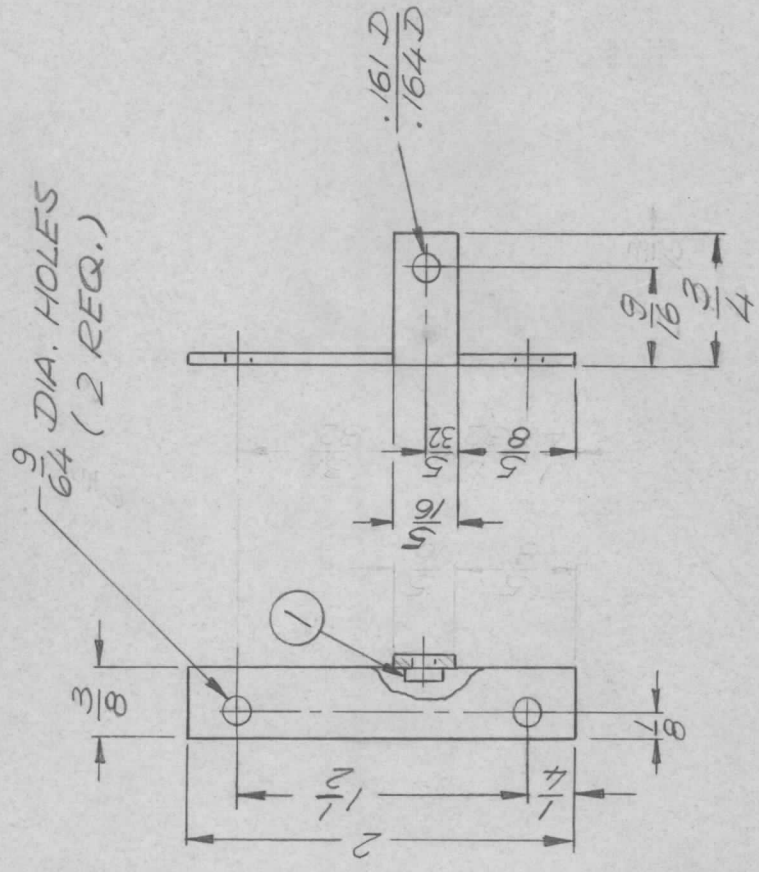
UNLESS OTHERWISE SPECIFIED DIMENSIONS ARE IN INCHES AND INCLUDE CHEMICALLY APPLIED OR PLATED FINISHES	DECIMALS	FRACTIONS	
X ± .05	1/64		
.XX ± .01	TOLS.	ANGLES	
.XXX ± .005		0°-30°	
MATERIAL 50 52 H32			
1/16 THK ALUMINUM			
FINISH S 404			
YELLOW IRIDITE			
FINAL APPROVAL	DATE	DATE	DATE
<i>J. J. Zang</i>	12-12-68	12-12-68	12-12-68
MECH. DES.	DATE	DATE	DATE
<i>J. J. Zang</i>	12-12-68	12-12-68	12-12-68
ELECT. DES.	DATE	DATE	DATE
<i>J. J. Zang</i>	12-12-68	12-12-68	12-12-68
CHECKED	DATE	DATE	DATE
<i>J. J. Zang</i>	12-12-68	12-12-68	12-12-68
DRAWN	DATE	DATE	DATE
<i>J. J. Zang</i>	12-12-68	12-12-68	12-12-68
NOTICE TO PERSONS RECEIVING THIS DRAWING THE TECHNICAL MATERIEL CORPORATION claims proprietary right in the material disclosed hereon. This drawing is issued in confidence for engineering information only and may not be reproduced or used to manufacture anything shown hereon without permission from THE TECHNICAL MATERIEL CORPORATION to the user. This drawing is loaned for mutual assistance and is subject to recall at any time.			
SIZE	CODE IDENT. NO.	DWG NO.	ISSUE
A	82679	MS 5441	Ø
SCALE 1:1			
		SHEET	OF
		1	1

APPLICATION

QTY	MODEL USED ON	ASS'Y NO.	LTR
1	SME-6		X

REVISIONS

DESCRIPTION	DATE	E.M.N.NO	DRAFT	CHKD	APPD
EXP. RELEASE	12/5/68		K.H.		
ORIG. RELEASE FOR PROD.	12-23-68		RG		
CHG-DIMS. 9/16 & 3/4 WAS 1/16 & 1/2	7-1-70	19918	GE		



MOUNT INSERT AFTER FINISHING

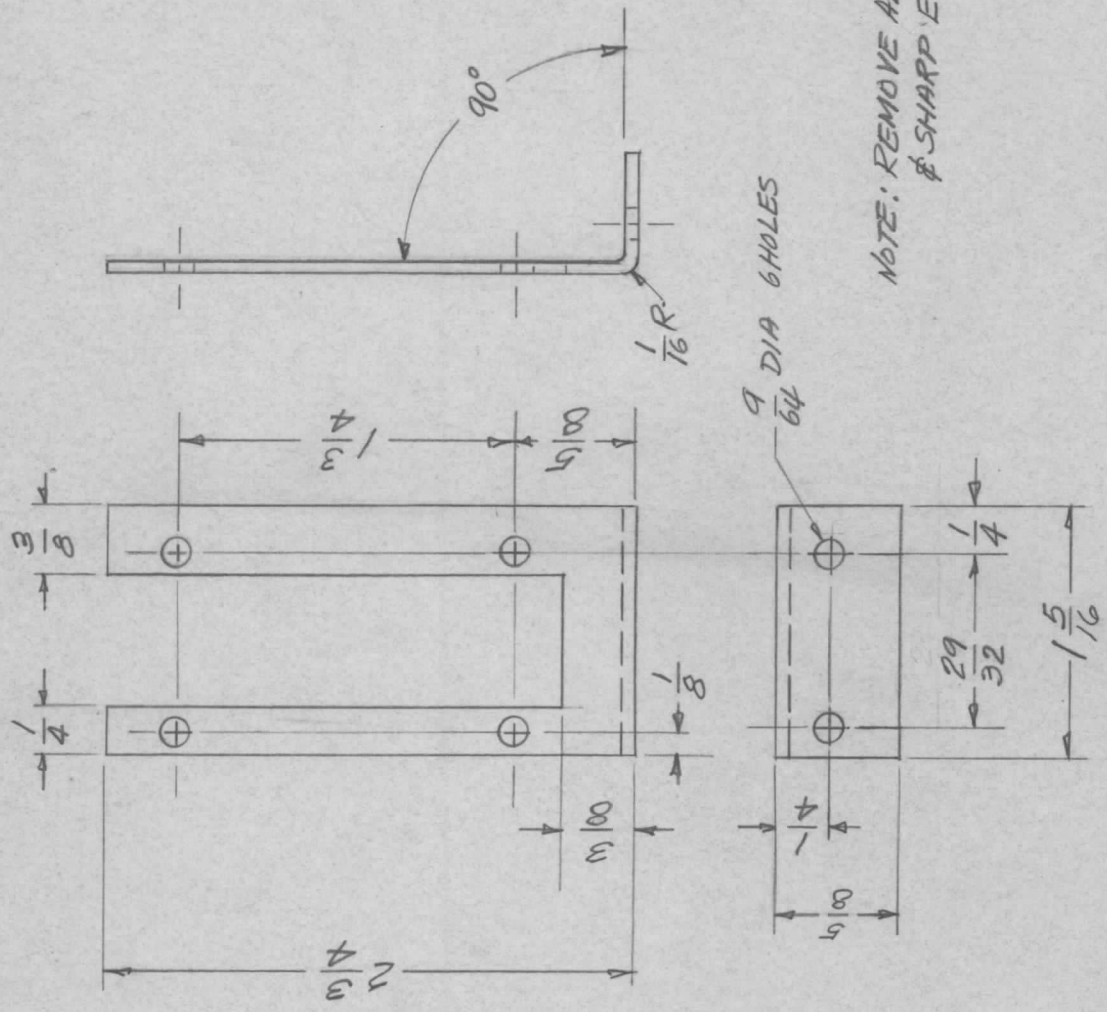
NOTE:
REMOVE ALL BLRRS
AND SHARP EDGES

UNLESS OTHERWISE SPECIFIED DIMENSIONS ARE IN INCHES AND INCLUDE CHEMICALLY APPLIED OR PLATED FINISHES		REQ'D ITEM		PART NUMBER		DESCRIPTION		SYM.	
DECIMALS X ± .05 .XX ± .01 .XXX ± .005		1		NT129-440-4		MILT, SWAGE			
FRACTIONS 1/64 ANGLES 0°-30°		POSE		LIST OF MATERIAL		THE TECHNICAL MATERIEL CORP. MAMARONECK, NEW YORK			
MATERIAL 5052 H32 1/16 THK. ALUMINUM		FINAL APPROVAL <i>[Signature]</i>		DATE 12/12/68		BRACKET, RELAY			
FINISH S 404 YELLOW IRIDITE		MECH. DES Jack A Gray		DATE 12-12-68					
		ELECT. DES.		DATE					
		CHECKED <i>[Signature]</i>		DATE 12/12/68					
		DRAWN <i>[Signature]</i>		DATE 12/5/68					
NOTICE TO PERSONS RECEIVING THIS DRAWING THE TECHNICAL MATERIEL CORPORATION claims proprietary right in the material disclosed hereon. This drawing is issued in confidence for engineering information only and may not be reproduced or used to manufacture anything shown hereon without permission from THE TECHNICAL MATERIEL CORPORATION to the user. This drawing is loaned for mutual assistance and is subject to recall at any time.		SIZE A		CODE IDENT. NO. 82679		DWG NO. MS 5442		ISSUE A	
		SCALE 1:1		SHEET 1		OF 1			

APPLICATION

REVISIONS

QTY	MODEL USED ON	ASS'Y NO.	LTR	DESCRIPTION	DATE	E.M.N.NO	DRAFT	CHKD	APPD
1	SPEP-1F3		Ø	ORIG. RELEASE FOR PROD.	11-27-68		R.G.		



UNLESS OTHERWISE SPECIFIED DIMENSIONS ARE IN INCHES AND INCLUDE CHEMICALLY APPLIED OR PLATED FINISHES	REQ'D ITEM	PART NUMBER	DESCRIPTION	SYM.
DECIMALS X ± .05 .XX ± .01 .XXX ± .005	ANGER		LIST OF MATERIAL	
FRACTIONS 1/64	FINAL APPROVAL <i>J. Anger</i>		THE TECHNICAL MATERIEL CORP.	
TOLS. ANGLES 0°-30°	MECH. DES. <i>J. Anger</i>		MAMARONECK, NEW YORK	
MATERIAL .051 THICK 5052-H32 ALUMINUM	ELECT. DES. <i>J. Anger</i>		BRACKET, RELAY MOUNTING	
FINISH S404 IRIDITE-14 2 AL COAT	CHECKED			
	DRAWN <i>J. Anger</i>			
	DATE 11/27/68			
	DATE 11/29/68			
	DATE 11/29/68			
	DATE 11/20/68			
NOTICE TO PERSONS RECEIVING THIS DRAWING THE TECHNICAL MATERIEL CORPORATION claims proprietary right in the material disclosed hereon. This drawing is issued in confidence for engineering information only and may not be reproduced or used to manufacture anything shown hereon without permission from THE TECHNICAL MATERIEL CORPORATION to the user. This drawing is loaned for mutual assistance and is subject to recall at any time.	SIZE A	CODE IDENT. NO. 82679	DWG NO. MS5445	ISSUE Ø
	SCALE 1:1		SHEET 1 OF 1	

APPLICATION

QTY 1
 MODEL USED ON KIT 322
 ASS'Y NO.

LTR

DESCRIPTION

DATE

E.M.N.NO

DRAFT

CHKD

APPD

X

EXP. RELEASE

12/3/68

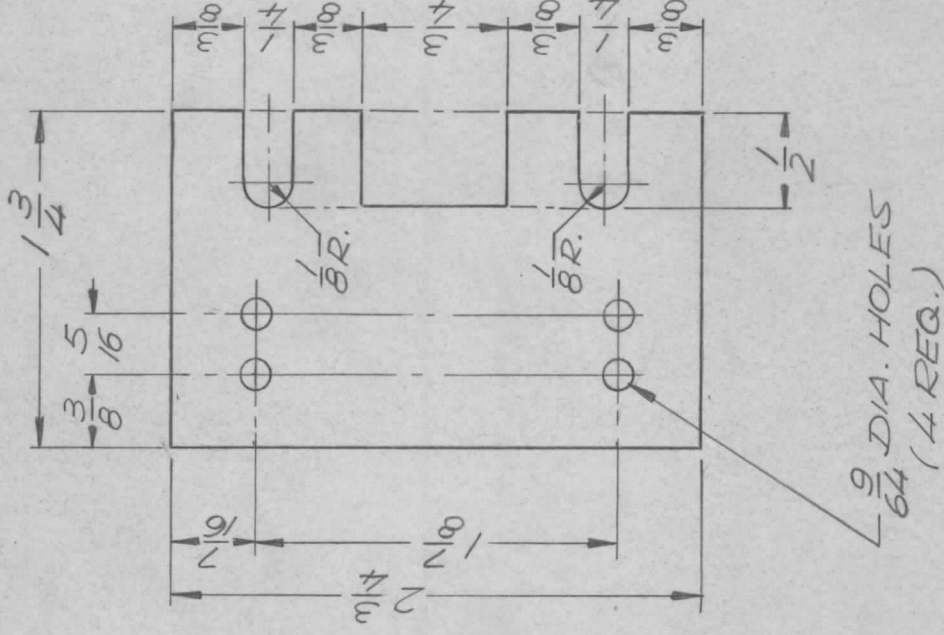
L.H.

Ø

ORIG. RELEASE FOR PROD.

12/26/68

R.G.



REVISIONS

DECIMALS	FRACTIONS	TOLS.	ANGLES	REQ'D ITEM	PART NUMBER	DESCRIPTION	SYM.
X ± .05	1/64						
.XX ± .01			0°-30°				
.XXX ± .005							
MATERIAL: .081 THK. ALUMINUM							
FINISH: S 404 YELLOW IRIDITE							
NOTICE TO PERSONS RECEIVING THIS DRAWING THE TECHNICAL MATERIEL CORPORATION claims proprietary right in the material disclosed hereon. This drawing is issued in confidence for engineering information only and may not be reproduced or used to manufacture anything shown hereon without permission from THE TECHNICAL MATERIEL CORPORATION to the user. This drawing is loaned for mutual assistance and is subject to recall at any time.							
FINAL APPROVAL [Signature]				DATE 12/23/68			
MECH. DES.				DATE			
ELECT. DES.				DATE			
CHECKED [Signature]				DATE 12/16/68			
DRAWN [Signature]				DATE 12/3/68			
LIST OF MATERIAL THE TECHNICAL MATERIEL CORP. MAMARONECK, NEW YORK TER. STRIP MTG. PLATE							
SIZE	CODE IDENT. NO.	DWG NO.	ISSUE				
A	82679	MS 54446	Ø				
SCALE	1:1	SHEET	OF				

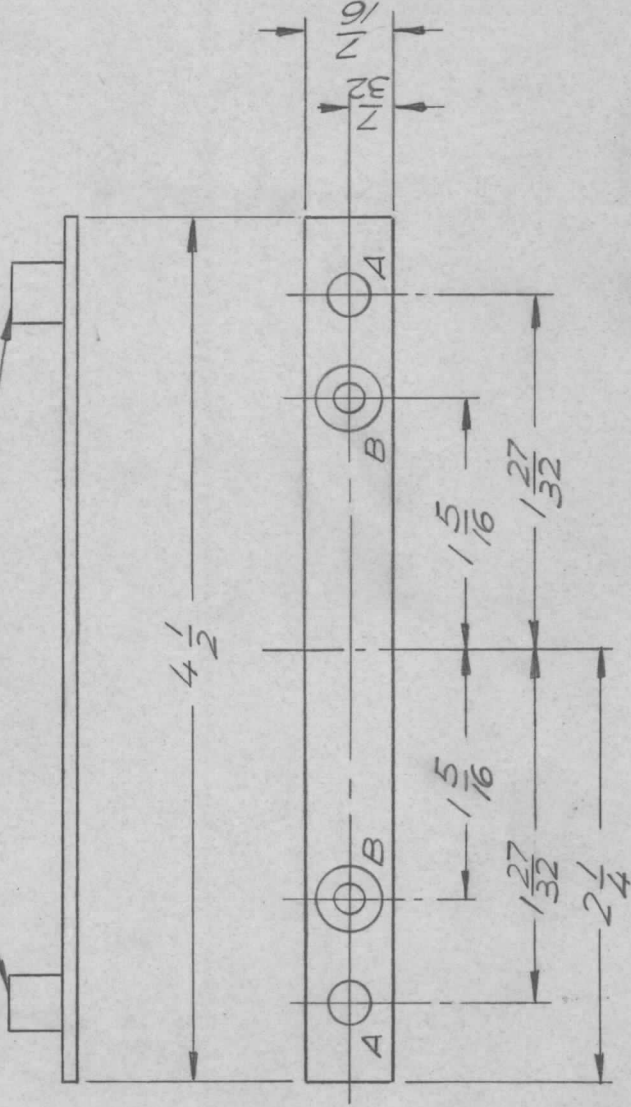
APPLICATION

QTY	MODEL USED ON	ASS'Y NO.	LTR
2	AX 5052		X

REVISIONS

DESCRIPTION	DATE	E.M.N.NO	DRAFT	CHKD	APPD
EXP. RELEASE	11/14/68		K.H.	J.D.	
DWG NO WAS MS5433 (ERRATA)	1/17/69	X1	J.D.	J.D.	
ORIG. RELEASE FOR PROD	1-17-69	Ø	R.G.		

1
MOUNT AFTER FINISHING



HOLES:

A ~ #12 DRILL (2 REQ.)

B ~ .169 DIA & 82° C' SINK TO .337 DIA. FOR B-32 (2 REQ.)

REQ'D ITEM	PART NUMBER	DESCRIPTION	SYM.
2	1 TE-108-1BN	MULT, CLINCH	
LIST OF MATERIAL			
THE TECHNICAL MATERIEL CORP. MAMARONECK, NEW YORK			
STRAP, MOUNTING			

UNLESS OTHERWISE SPECIFIED DIMENSIONS ARE IN INCHES AND INCLUDE CHEMICALLY APPLIED OR PLATED FINISHES
DECIMALS
.X ± .05
.XX ± .01
.XXX ± .005
FRACTIONS
1/64
TOLS.
ANGLES
0°-30'
MATERIAL .064-
ALUM. 5052-H32
FINISH S404
YELLOW IRIDITE

FINAL APPROVAL	DATE
<i>[Signature]</i>	1-17-69
MECH. DES.	DATE
<i>[Signature]</i>	1-8-69
ELECT. DES.	DATE
<i>[Signature]</i>	1-17-69
CHECKED	DATE
<i>[Signature]</i>	1-8-69
DRAWN	DATE
<i>[Signature]</i>	11/14/68

NOTICE TO PERSONS RECEIVING THIS DRAWING
THE TECHNICAL MATERIEL CORPORATION claims proprietary right in the material disclosed hereon. This drawing is issued in confidence for engineering information only and may not be reproduced or used to manufacture anything shown hereon without permission from THE TECHNICAL MATERIEL CORPORATION to the user. This drawing is loaned for mutual assistance and is subject to recall at any time.

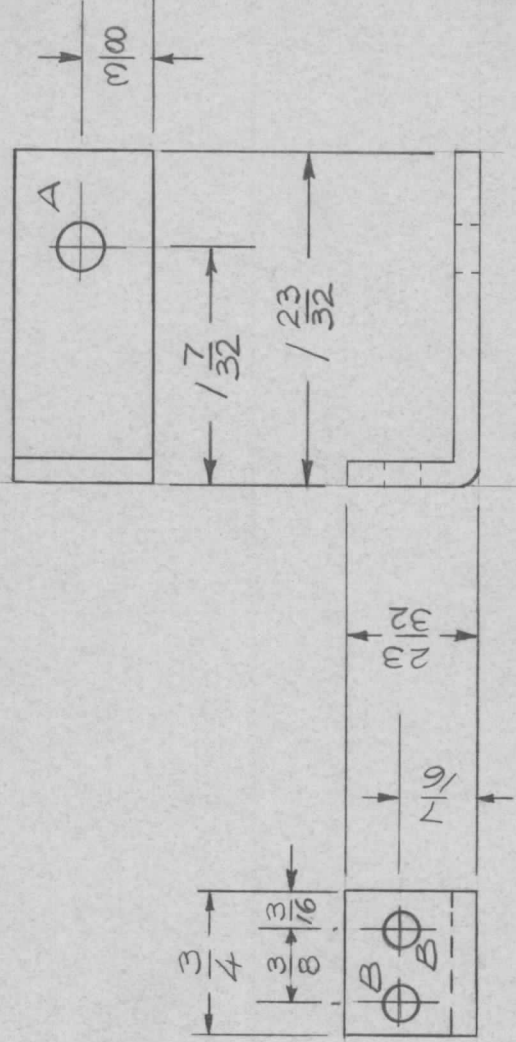
SIZE	CODE IDENT. NO.	DWG NO.	ISSUE
A	82679	MS5448	Ø
SCALE		SHEET	OF

APPLICATION

QTY	MODEL USED ON	ASS'Y NO.	LTR
7	HFRR-4	BMA291	X

REVISIONS

DESCRIPTION	DATE	E.M.N.NO	DRAFT	CHKD	APPD
EXP. RELEASE	2/27/69	--	GE		
ORIG. RELEASE FOR PROD.	2/28/69		RG		JDE



SYM	HOLE SIZE	REQ
A	15/64	1
B	1/64	2

UNLESS OTHERWISE SPECIFIED DIMENSIONS ARE IN INCHES AND INCLUDE CHEMICALLY APPLIED OR PLATED FINISHES

DECIMALS FRACTIONS
 .X ± .05 1/64
 .XX ± .01 TOLS. ANGLES
 .XXX ± .005 0°-30°

MATERIAL 1/8" ALUM
 5052-H32
 FINISH S404
 YELLOW IRIDITE

REQ'D ITEM	PART NUMBER	DESCRIPTION	SYM.
FINAL APPROVAL		LIST OF MATERIAL	
MECH. DES.		THE TECHNICAL MATERIEL CORP. MAMARONECK, NEW YORK	
ELECT. DES.		BRACKET, MTG, TUNER	
CHECKED			
DRAWN			

SIZE	CODE IDENT. NO.	DWG NO.	ISSUE
A	82679	MS 5452	0
SCALE	1:1	SHEET	OF

NOTICE TO PERSONS RECEIVING THIS DRAWING

THE TECHNICAL MATERIEL CORPORATION claims proprietary right in the material disclosed hereon. This drawing is issued in confidence for engineering information only and may not be reproduced or used to manufacture anything shown hereon without permission from THE TECHNICAL MATERIEL CORPORATION to the user. This drawing is loaned for mutual assistance and is subject to recall at any time.

APPLICATION

QTY 1
 MODEL USED ON HFR-4
 ASS'Y NO. BMA291

LTR X
 Ø

DESCRIPTION
 EXP. RELEASE
 ORIG. RELEASE FOR PROD.

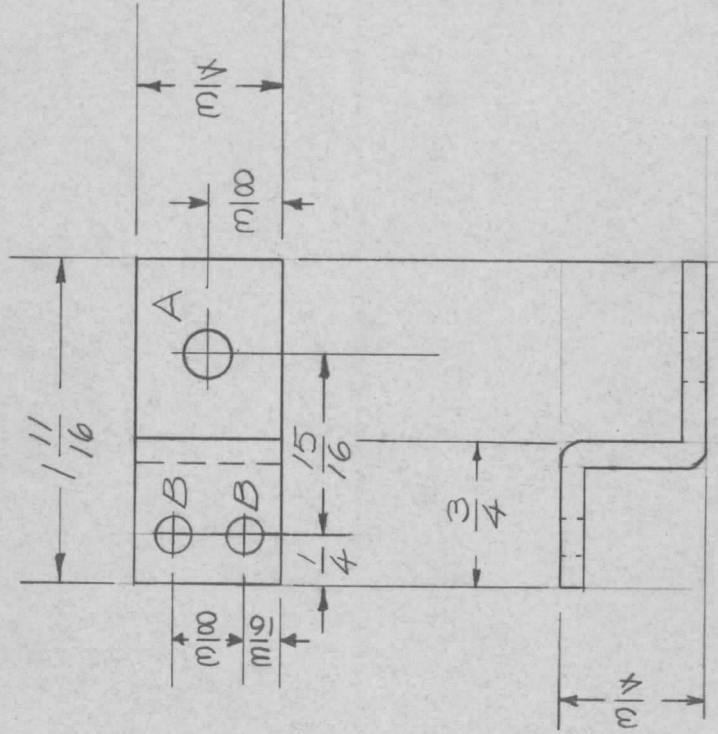
DATE 1/27/69
 2/28/69

E.M.N.NO. --

DRAFT GE
 RG

CHKD

APPD



SYM	HOLE SIZE	REQ
A	15/64	1
B	1/164	2

UNLESS OTHERWISE SPECIFIED DIMENSIONS ARE IN INCHES AND INCLUDE CHEMICALLY APPLIED OR PLATED FINISHES

DECIMALS FRACTIONS
 .X ± .05 1/64
 .XX ± .01 TOLS.
 .XXX ± .005 ANGLES
 0°-30°

MATERIAL 1/8 ALUMINUM
 5052 - H 32

FINISH S704
 YELLOW IRIDITE

REQ'D ITEM	PART NUMBER	DESCRIPTION	SYM.
POSE		LIST OF MATERIAL	
FINAL APPROVAL	DATE 2/28/69	THE TECHNICAL MATERIEL CORP. MAMARONECK, NEW YORK	
MECH. DES.	DATE 28 Feb 69	BRACKET MTG, TUNER ASSY	
ELECT. DES.	DATE		
CHECKED	DATE 1/28/69		
DRAWN	DATE 2/27/69		

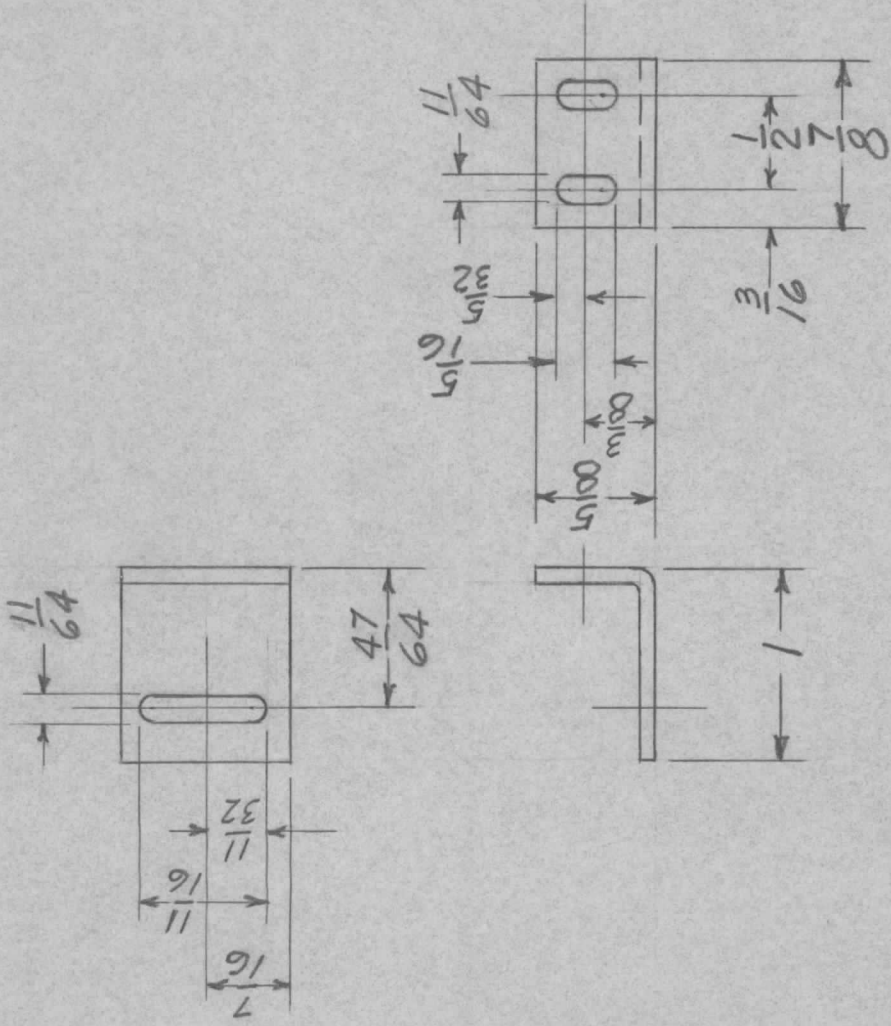
NOTICE TO PERSONS RECEIVING THIS DRAWING
 THE TECHNICAL MATERIEL CORPORATION claims proprietary right in the material disclosed hereon. This drawing is issued in confidence for engineering information only and may not be reproduced or used to manufacture anything shown hereon without permission from THE TECHNICAL MATERIEL CORPORATION to the user. This drawing is loaned for mutual assistance and is subject to recall at any time.

SIZE	CODE IDENT. NO.	DWG NO.	ISSUE
A	82679	MS 5453	Ø
SCALE	SHEET	OF	
1/1	1/1		

APPLICATION

REVISIONS

QTY	MODEL USED ON	ASS'Y NO.	LTR	DESCRIPTION	DATE	E.M.N.NO	DRAFT	CHKD	APPD
2	HFRR-4		Ø	ORIG. RELEASE FOR PROD.	2-26-69		RG		JQ



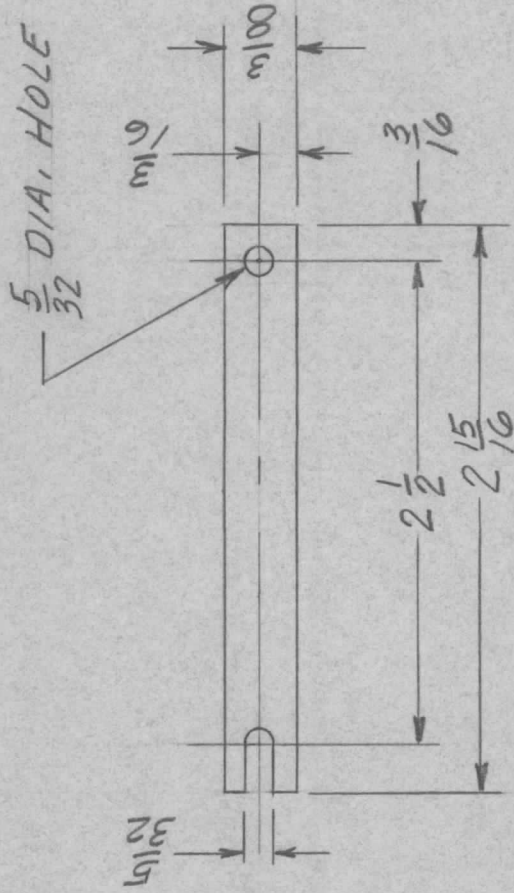
UNLESS OTHERWISE SPECIFIED DIMENSIONS ARE IN INCHES AND INCLUDE CHEMICALLY APPLIED OR PLATED FINISHES	REQ'D ITEM	PART NUMBER	DESCRIPTION	SYM.		
	POSE		LIST OF MATERIAL SK 3252-XS			
DECIMALS	DATE	DATE	THE TECHNICAL MATERIEL CORP. MAMARONECK, NEW YORK			
.X ± .05	FINAL APPROVAL	2/26/69				
.XX ± .01	MECH. DES.	DATE	BRACKET			
.XXX ± .005	D.A.C.	2/26/69				
1/64	ELECT. DES.	DATE	SCALE			
ANGLES	CHECKED	DATE				
0° - 30°	DRAWN	DATE	SIZE	CODE IDENT. NO.	DWG NO.	ISSUE
MATERIAL .081 THICK			A	82679	M55455	Ø
ALUM. 5052 H 32						
FINISH 5404						
YEL. IRIDITE						

NOTICE TO PERSONS RECEIVING THIS DRAWING
 THE TECHNICAL MATERIEL CORPORATION claims proprietary right in the material disclosed hereon. This drawing is issued in confidence for engineering information only and may not be reproduced or used to manufacture anything shown hereon without permission from THE TECHNICAL MATERIEL CORPORATION to the user. This drawing is loaned for mutual assistance and is subject to recall at any time.

APPLICATION

REVISIONS

QTY	MODEL USED ON	ASSY NO.	LTR	DESCRIPTION	DATE	E.M.N.NO	DRAFT	CHKD	APPD
1	HFRR-4		Ø	ORIG. RELEASE FOR PROD.	2-26-69		RG		<i>JWD</i>



* MATERIAL
 .016 BERYLLIUM COPPER
 SPRING TEMPER

UNLESS OTHERWISE SPECIFIED DIMENSIONS ARE IN INCHES AND INCLUDE CHEMICALLY APPLIED OR PLATED FINISHES		REQ'D ITEM	PART NUMBER	DESCRIPTION	SYM.
DECIMALS .X ± .05 .XX ± .01 .XXX ± .005		POSE		LIST OF MATERIAL SK 3252-X6	
FRACTIONS 1/64 ANGLES 0°-30'		FINAL APPROVAL <i>[Signature]</i>	DATE 2/26/69	THE TECHNICAL MATERIEL CORP. MAMARONECK, NEW YORK	
MATERIAL *		MECH. DES. <i>[Signature]</i>	DATE 2/26/69		
FINISH		ELECT. DES. <i>[Signature]</i>	DATE 2/26/69	STRAP	
		CHECKED <i>[Signature]</i>	DATE 2/26/69		
		DRAWN D.A.C	DATE 2/26/69		
NOTICE TO PERSONS RECEIVING THIS DRAWING		SCALE		CODE IDENT. NO.	ISSUE
THE TECHNICAL MATERIEL CORPORATION claims proprietary right in the material disclosed hereon. This drawing is issued in confidence for engineering information only and may not be reproduced or used to manufacture anything shown hereon without permission from THE TECHNICAL MATERIEL CORPORATION to the user. This drawing is loaned for mutual assistance and is subject to recall at any time.		A		82679	MS5456
		SIZE		DWG NO.	OF
		SHEET			

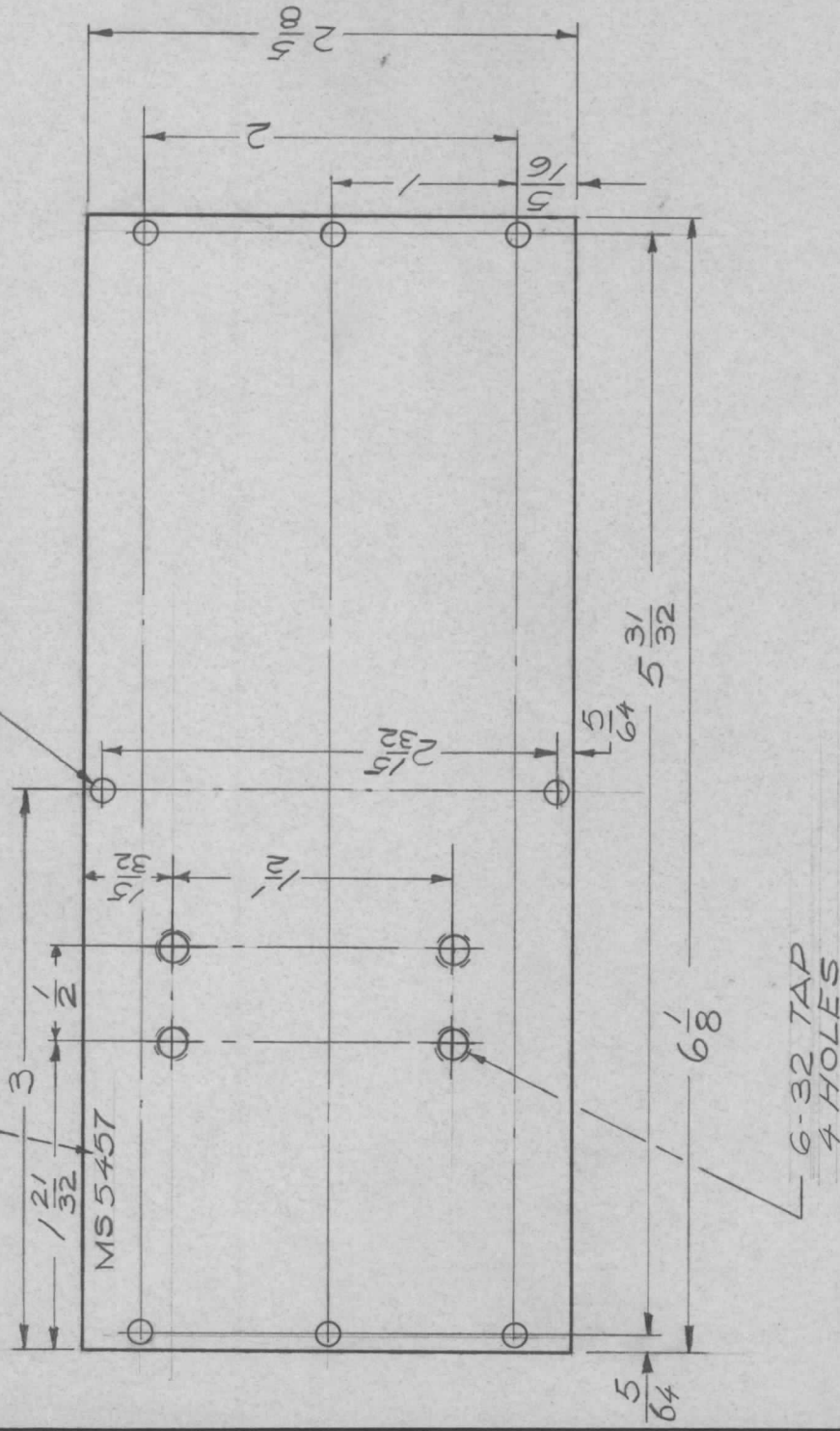
APPLICATION

REVISIONS

QTY	MODEL USED ON	ASS'Y NO.	LTR	DESCRIPTION	DATE	E.M.N.NO	DRAFT	CHKD	APPD
1	HFFR-4	A0128	X	EXP. RELEASE	2/28/69		GE		
			Ø	ORIG. RELEASE FOR PROD.	2/28/69		RG		JR

MARK TMC P/N
1/8 HIGH GOTHIC
W/LATEST REV.
LETTER

1/64 DIA. (8 REQ)



REQ'D ITEM	PART NUMBER	DESCRIPTION	SYM.
FINAL APPROVAL <i>[Signature]</i>		LIST OF MATERIAL SK3252-003-29	
MECH. DES. <i>[Signature]</i>		THE TECHNICAL MATERIEL CORP. MAMARONECK, NEW YORK	
ELECT. DES.		PLATE, SIDE OSC (LEFT)	
CHECKED <i>[Signature]</i>			
DRAWN <i>[Signature]</i>			
MATERIAL 1/BTK ALUM 2024 T-3			
FINISH S404 YEL. IR/DITE			
S401-451			
DATE 2/28/69			
DATE 2/28/69			
DATE 2/28/69			
DATE 2/28/69			

NOTICE TO PERSONS RECEIVING THIS DRAWING
THE TECHNICAL MATERIEL CORPORATION claims proprietary right in the material disclosed hereon. This drawing is issued in confidence for engineering information only and may not be reproduced or used to manufacture anything shown hereon without permission from THE TECHNICAL MATERIEL CORPORATION to the user. This drawing is loaned for mutual assistance and is subject to recall at any time.

SIZE A	CODE IDENT. NO. 82679	DWG NO. MS 5457	ISSUE Ø
SCALE 1:1		SHEET OF	

APPLICATION

QTY 1 MODEL USED ON SME-6 ASS'Y NO.

LTR X

DESCRIPTION

EXP. RELEASE
ORIG. RELEASE FOR PROD.

DATE

3/11/69
3/18/69

E.M.N.NO.

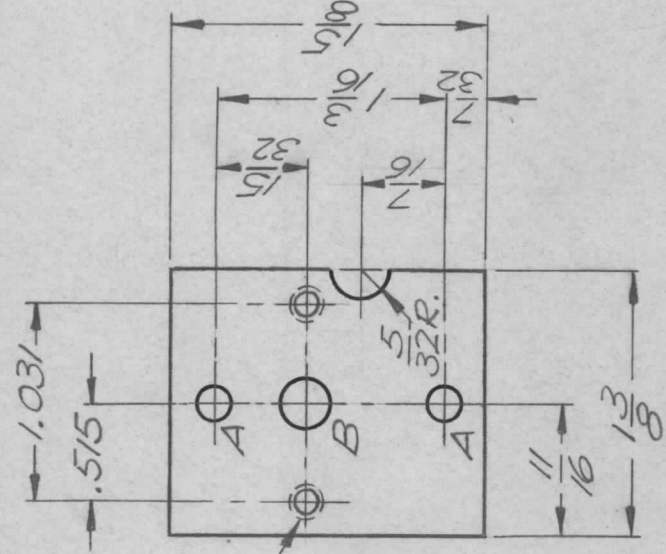
DRAFT

K.H.
RG

CHKD

APPD

REVISIONS



4 - 40 TAP
(2 HOLES)

HOLE	DESCRIPTION	REQ'D.
A	1/64 DIA.	2
B	.251 ± .002 DIA.	1

HOLE LEGEND

UNLESS OTHERWISE SPECIFIED DIMENSIONS ARE IN INCHES AND INCLUDE CHEMICALLY APPLIED OR PLATED FINISHES

DECIMALS .X ± .05 .XX ± .01 .XXX ± .005
FRACTIONS 1/64 TOLS. ANGLES 0°-30°

MATERIAL .160 ALU.
2024 - T3

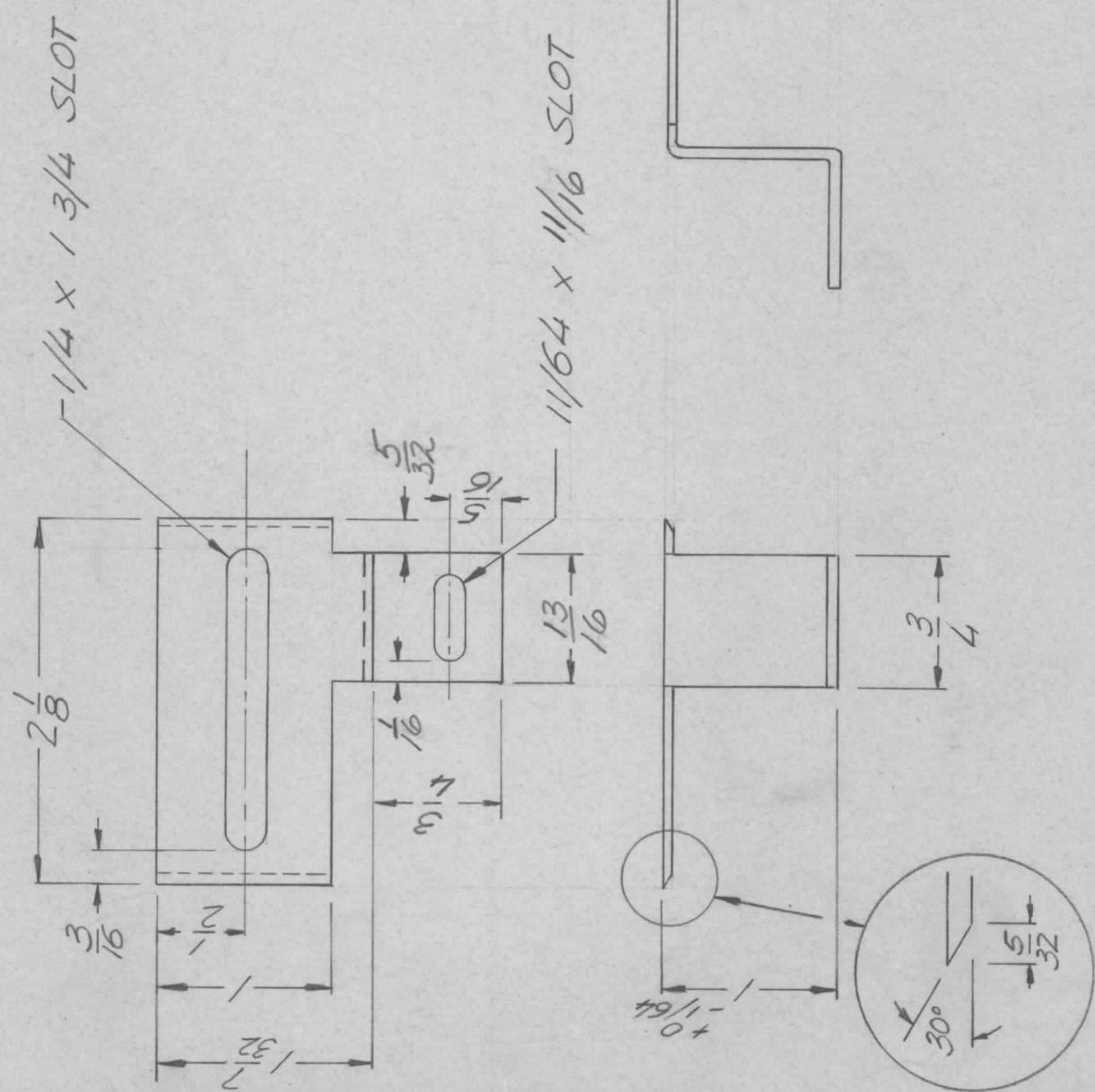
FINISH

REQ'D ITEM	PART NUMBER	DESCRIPTION	SYM.
POSE		LIST OF MATERIAL	
FINAL APPROVAL		THE TECHNICAL MATERIEL CORP. MAMARONECK, NEW YORK	
MECH. DES.			
ELECT. DES.			
CHECKED		PLATE, MOUNTING, SWITCH	
DRAWN			

SIZE	CODE IDENT. NO.	DWG NO.	ISSUE
A	82679	MS 5458	Ø
SCALE	1:1	SHEET	OF

NOTICE TO PERSONS RECEIVING THIS DRAWING
THE TECHNICAL MATERIEL CORPORATION claims proprietary right in the material disclosed hereon. This drawing is issued in confidence for engineering information only and may not be reproduced or used to manufacture anything shown hereon without permission from THE TECHNICAL MATERIEL CORPORATION to the user. This drawing is loaned for mutual assistance and is subject to recall at any time.

APPLICATION			REVISIONS						
QTY	MODEL USED ON	ASS'Y NO.	LTR	DESCRIPTION	DATE	E.M.N.NO	DRAFT	CHKD	APPD
1	LFRR-4	BMA-298	B	REDRAWN & REVISED	11/11/70	20088	GE	TC	GEA

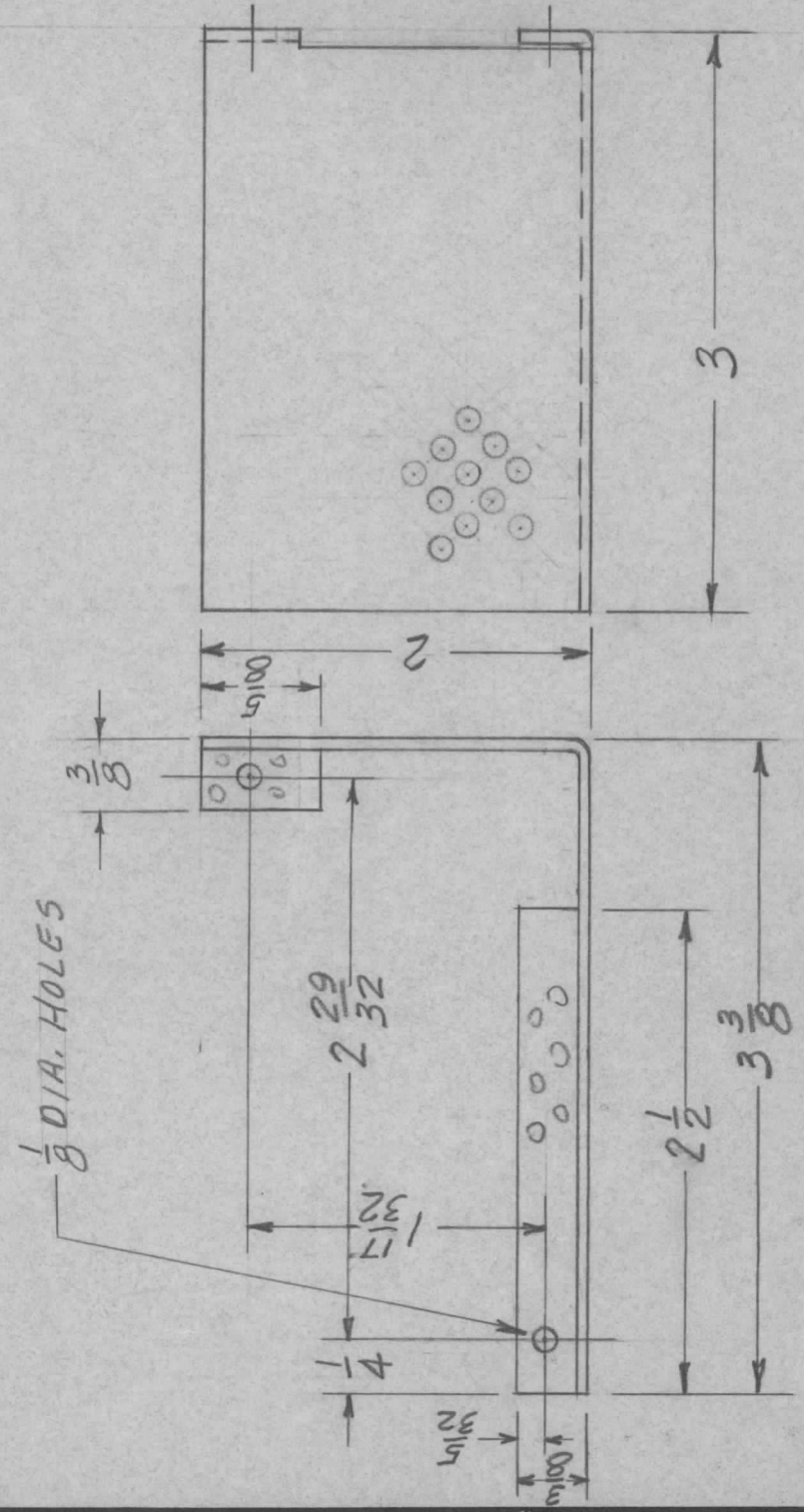


UNLESS OTHERWISE SPECIFIED DIMENSIONS ARE IN INCHES AND INCLUDE CHEMICALLY APPLIED OR PLATED FINISHES	REQ'D ITEM	PART NUMBER	DESCRIPTION	SYM.
DECIMALS X ± .05 .XX ± .01 .XXX ± .005	POSE		LIST OF MATERIAL	
FRACTIONS 1/64	FINAL APPROVAL		THE TECHNICAL MATERIEL CORP.	
ANGLES 0°-30°	MECH. DES.		MAMARONECK, NEW YORK	
MATERIAL: 081 ALLUM 5052 H32	ELECT. DES.		SWITCH ACTUATOR	
FINISH: S404 YEL. IRIDITE	CHECKED			
	DRAWN			
	DATE			
	DATE			
	DATE			
	DATE			
	DATE			
	DATE			

SIZE	CODE IDENT. NO.	DWG NO.	ISSUE
A	82679	MS 5461	B
SCALE	SHEET	OF	

NOTICE TO PERSONS RECEIVING THIS DRAWING
 THE TECHNICAL MATERIEL CORPORATION claims proprietary right in the material disclosed hereon. This drawing is issued in confidence for engineering information only and may not be reproduced or used to manufacture anything shown hereon without permission from THE TECHNICAL MATERIEL CORPORATION to the user. This drawing is loaned for mutual assistance and is subject to recall at any time.

QTY	MODEL USED ON	ASS'Y NO.	LTR	DESCRIPTION	DATE	E.M.N.NO	DRAFT	CHKD	APPD
1	MTRM-150		Ø	ORIG RELEASE FOR PROD	7/17/69		CV		JQ

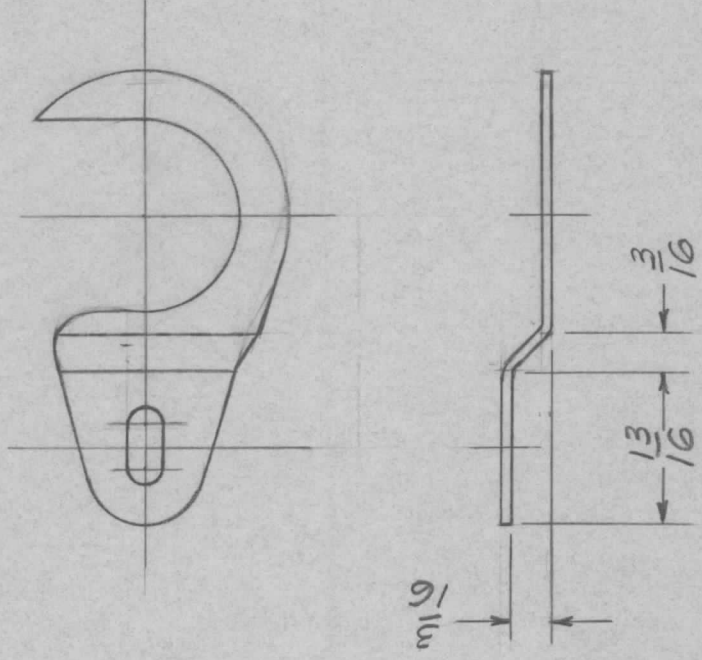


* PERFORATED ALUM
 1/8 DIA. ON 3/16 CENTERS

UNLESS OTHERWISE SPECIFIED DIMENSIONS ARE IN INCHES AND INCLUDE CHEMICALLY APPLIED OR PLATED FINISHES	REQ'D ITEM	PART NUMBER	DESCRIPTION	SYM.
DECIMALS .X ± .05 .XX ± .01 .XXX ± .005	ROSE		LIST OF MATERIAL SK 3308 MSSD	
FRACTIONS 1/64 ANGLES 0° - 30°	FINAL APPROVAL DATE 7/1/69		THE TECHNICAL MATERIEL CORP. MAMARONECK, NEW YORK	
MATERIAL 050 ALUM * 5052 H 32	MECH. DES. DATE 7/18/69			
FINISH 5404 YEL. IRIDITE	ELECT. DES. DATE 7/1/69		SHIELD	
	CHECKED DATE 7-2-69			
	DRAWN DATE 2-13-69			

NOTICE TO PERSONS RECEIVING THIS DRAWING		SIZE	CODE IDENT. NO.	DWG NO.	ISSUE
THE TECHNICAL MATERIEL CORPORATION claims proprietary right in the material disclosed hereon. This drawing is issued in confidence for engineering information only and may not be reproduced or used to manufacture anything shown hereon without permission from THE TECHNICAL MATERIEL CORPORATION to the user. This drawing is loaned for mutual assistance and is subject to recall at any time.		A	82679	MS 5463	Ø
		SCALE	SHEET	OF	

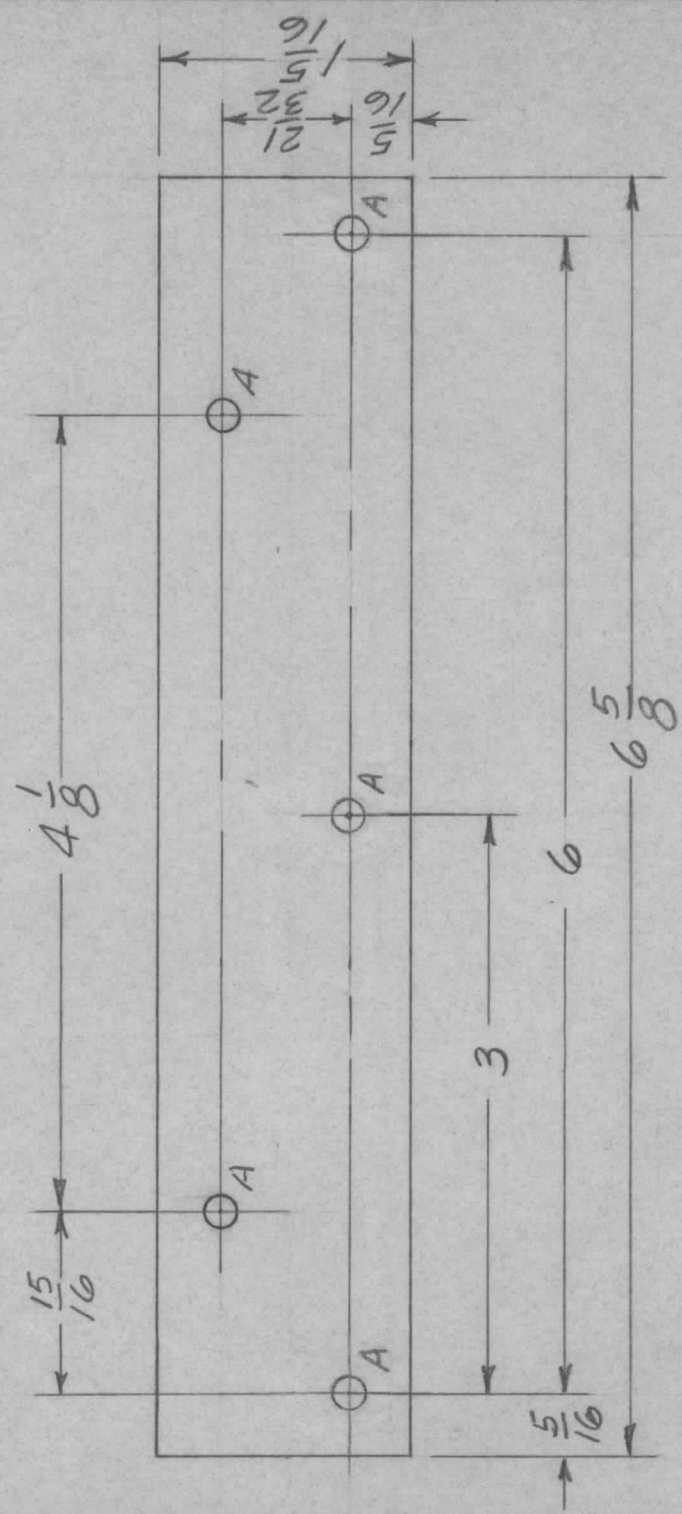
QTY	MODEL USED ON	ASS'Y NO.	LTR	DESCRIPTION	DATE	E.M.N.NO	DRAFT	CHKD	APPD
1	MTRM-150		Ø	ORIG RELEASE FOR PROD	7/17/69		CV		<i>JLS</i>



* USE PM 1166
 & BEND AS SHOWN

UNLESS OTHERWISE SPECIFIED DIMENSIONS ARE IN INCHES AND INCLUDE CHEMICALLY APPLIED OR PLATED FINISHES		REQ'D ITEM	PART NUMBER	DESCRIPTION	SYM.
DECIMALS		LIST OF MATERIAL SK3308 PM5			
FRACTIONS		THE TECHNICAL MATERIEL CORP.			
.X ± .05 TOLS. 1/64		DATE	7/17/69	MAMARONECK, NEW YORK	
.XX ± .01 ANGLES 0° - 30'		MECH. DES.	<i>Blue</i>	PLATE, TUBE SUPPORT	
.XXX ± .005		ELECT. DES.	<i>JLS</i>	(ALTERED)	
MATERIAL *		CHECKED	<i>JLS</i>	SIZE	CODE IDENT. NO.
FINISH		DRAWN	<i>D.A.C.</i>	A	82679
NOTICE TO PERSONS RECEIVING THIS DRAWING		DWG NO. MS 5464			
THE TECHNICAL MATERIEL CORPORATION claims proprietary right in the material disclosed hereon. This drawing is issued in confidence for engineering information only and may not be reproduced or used to manufacture anything shown hereon without permission from THE TECHNICAL MATERIEL CORPORATION to the user. This drawing is loaned for mutual assistance and is subject to recall at any time.		SCALE		SHEET	OF

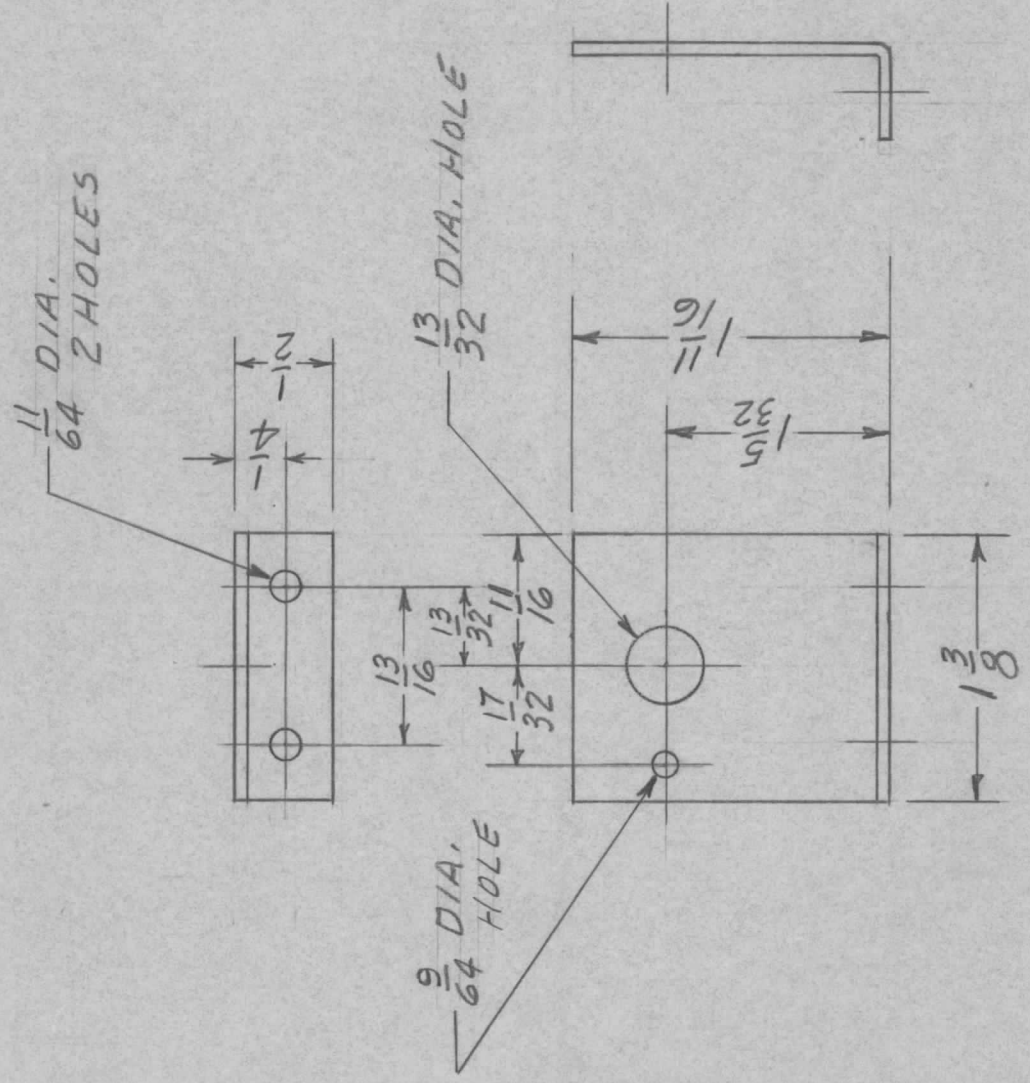
QTY	MODEL USED ON	ASS'Y NO.	LTR	DESCRIPTION	DATE	E.M.N.NO	DRAFT	CHKD	APPD
1	MTRM-150		Ø	ORIG RELEASE FOR PROD	7/17/69		CV		JLO



HOLES
A - 1/64 DIA. 5 REQ

REQ'D ITEM	PART NUMBER	DESCRIPTION	SYM.
POSE		LIST OF MATERIAL SK 3308 MS34	
FINAL APPROVAL	DATE 8/13/69	THE TECHNICAL MATERIEL CORP. MAMARONECK, NEW YORK	
MECH. DES.	DATE 7/18/69		
ELECT. DES.	DATE 7/17/69		
CHECKED	DATE 7-2-69		
DRAWN	DATE 2-13-69	FAN HOLDER PLATE	
UNLESS OTHERWISE SPECIFIED DIMENSIONS ARE IN INCHES AND INCLUDE CHEMICALLY APPLIED OR PLATED FINISHES		SIZE	CODE IDENT. NO.
DECIMALS		A	82679
FRACTIONS		SCALE	DWG NO.
.X ± .05 TOLS. 1/64			MS 5465
.XX ± .01 ANGLES 0° - 30'			ISSUE
.XXX ± .005			Ø
MATERIAL .081 ALUMINUM 5052 H32			
FINISH 5404 YEL. IRIDITE			
NOTICE TO PERSONS RECEIVING THIS DRAWING			
THE TECHNICAL MATERIEL CORPORATION claims proprietary right in the material disclosed hereon. This drawing is issued in confidence for engineering information only and may not be reproduced or used to manufacture anything shown hereon without permission from THE TECHNICAL MATERIEL CORPORATION to the user. This drawing is loaned for mutual assistance and is subject to recall at any time.			
FCI-10-170 (10-66)			

QTY	MODEL USED ON	ASS'Y NO.	LTR	DESCRIPTION	DATE	E.M.N.NO	DRAFT	CHKD	APPD
1	MTRM-150		Ø	ORIG RELEASE FOR PROD	7/17/69		CV		ja



UNLESS OTHERWISE SPECIFIED DIMENSIONS ARE IN INCHES AND INCLUDE CHEMICALLY APPLIED OR PLATED FINISHES	REQ'D ITEM	PART NUMBER	DESCRIPTION	SYM.
	POSE		LIST OF MATERIAL SK3308 MS33	
DECIMALS	FINAL APPROVAL	DATE	THE TECHNICAL MATERIEL CORP. MAMARONECK, NEW YORK	
.X ± .05 TOLS.	MECH. DES.	DATE		
.XX ± .01 ANGLES	ELECT. DES.	DATE	SWITCH BRACKET	
.XXX ± .005 0°-30'	CHECKED	DATE		
MATERIAL .063 ALUM. 5052 H32	DRAWN	DATE	SCALE	
FINISH 5404 YEL. IRIDITE		DATE		

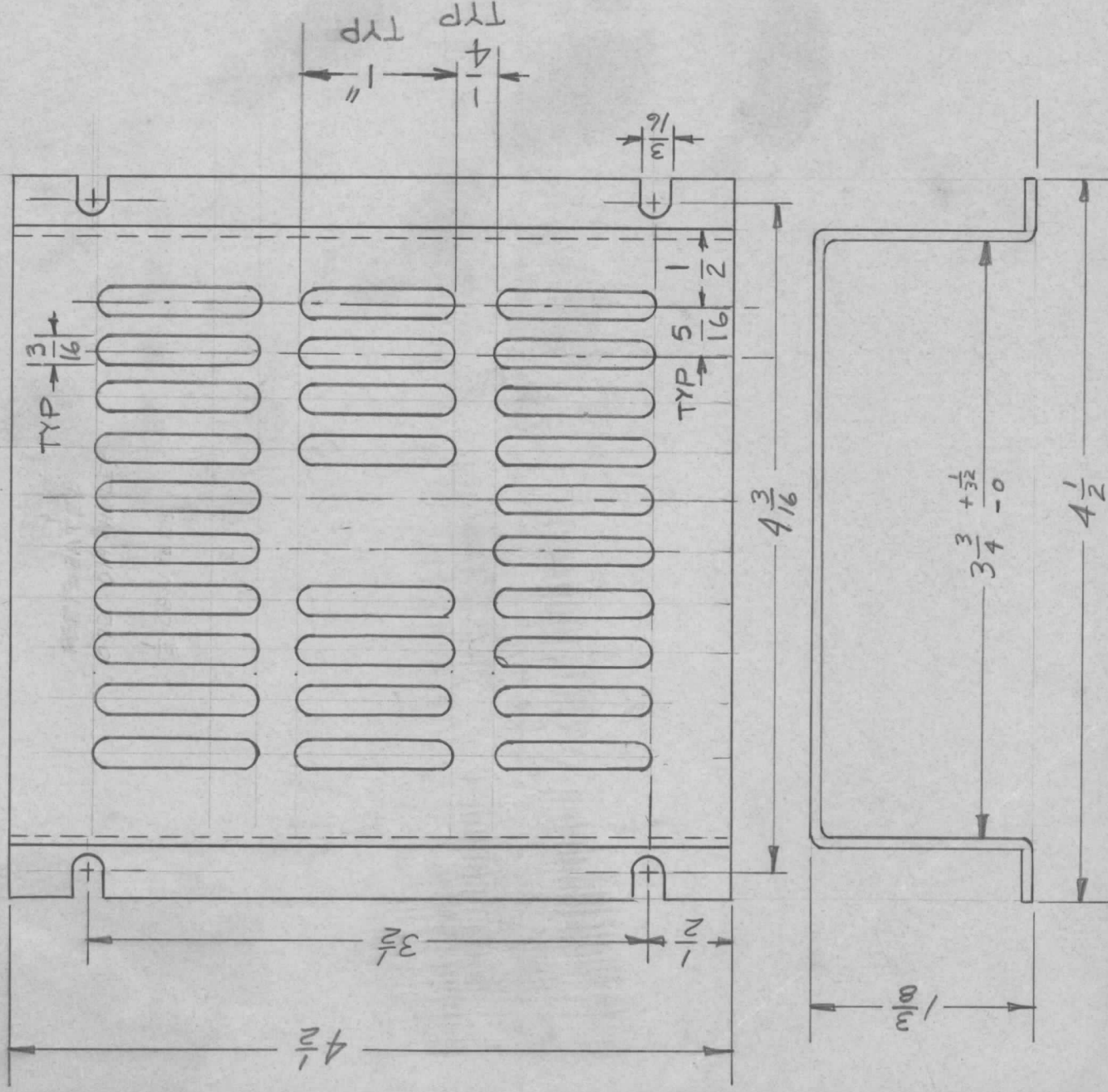
SIZE	CODE IDENT. NO.	DWG NO.	ISSUE
A	82679	M5 5471	Ø
SCALE	SHEET	OF	

NOTICE TO PERSONS RECEIVING THIS DRAWING
 THE TECHNICAL MATERIEL CORPORATION claims proprietary right in the material disclosed hereon. This drawing is issued in confidence for engineering information only and may not be reproduced or used to manufacture anything shown hereon without permission from THE TECHNICAL MATERIEL CORPORATION to the user. This drawing is loaned for mutual assistance and is subject to recall at any time.

APPLICATION

REVISIONS

QTY	MODEL USED ON	ASSY NO.	LTR	DESCRIPTION	DATE	E.M.N.NO	DRAFT	CHKD	APPD
1	HFR-4	BMA294	Ø	ORIG RELEASE FOR PROD	4-18-69		CV		
			A	SLOTTED AREA WAS PERFORATED	1-3-74	Z1203	GDL	α	α



UNLESS OTHERWISE SPECIFIED
DIMENSIONS ARE IN INCHES
AND INCLUDE CHEMICALLY APPLIED
OR PLATED FINISHES

DECIMALS
X ± .05
.XX ± .01
.XXX ± .005

FRACTIONS
1/64
ANGLES
0°-30°

MATERIAL .051
PERM ALUM 5052-H32
FINISH 5404
YEL IRID.

REQ'D ITEM	PART NUMBER	DESCRIPTION	SYM.
LIST OF MATERIAL			
THE TECHNICAL MATERIEL CORP. MAMARONECK, NEW YORK			
FINAL APPROVAL <i>O. Pose</i>	DATE 4/18/69		
MECH. DES. <i>MM</i>	DATE 1/7/69		
ELECT. DES.	DATE		
CHECKED <i>MM</i>	DATE 4/17/69		
DRAWN <i>MM</i>	DATE 1/7/69		
SHIELD HEAT SINK			

NOTICE TO PERSONS RECEIVING THIS DRAWING

THE TECHNICAL MATERIEL CORPORATION claims proprietary right in the material disclosed hereon. This drawing is issued in confidence for engineering information only and may not be reproduced or used to manufacture anything shown hereon without permission from THE TECHNICAL MATERIEL CORPORATION to the user. This drawing is loaned for mutual assistance and is subject to recall at any time.

SIZE CODE IDENT. NO. DWG NO.

A 82679

MS5478

ISSUE

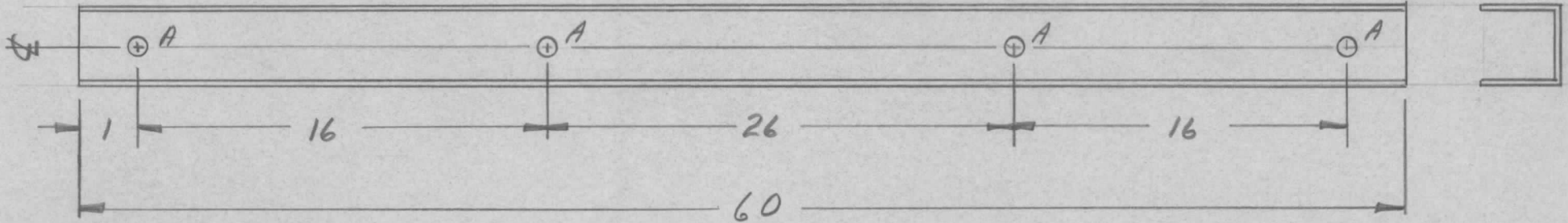
A

SCALE

SHEET

OF

REQ. PER UNIT	USED ON			MS5481	∅
	MODEL	ASS'Y. NO.	DATE		
1	RAK135	AX702	12 MAY 69		



A ~ 11/64 DIA. 4 REQ.

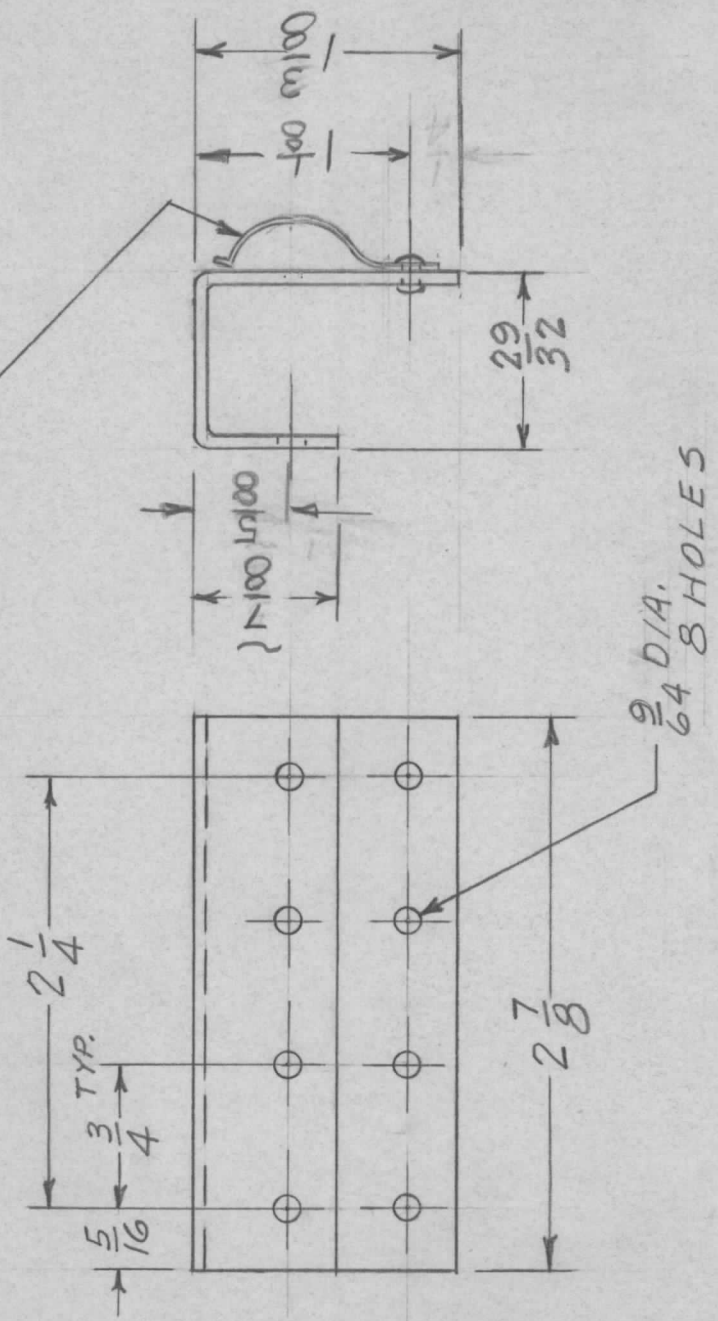
							60'	1	P0160	CND, AC STRIP		
							REQ. ITEM	PART NO.		DESCRIPTION		SYMBOL
							STOCK SIZE			THE TECHNICAL MATERIEL CORP. MAMARONECK, NEW YORK		
							MATERIAL			CONDUIT, AC STRIP		
∅	ORIGINAL RELEASE	5/12/69	∅	CW.								
SYM	DESCRIPTION	DATE	CH. NO.	DRAFTS	CHECKER	ENG. APP.	MATERIAL					
UNLESS OTHERWISE SPECIFIED DIMENSIONS ARE IN INCHES AND INCLUDE CHEMICALLY APPLIED OR PLATED FINISHES						SCALE						
DECIMALS .X ± .05 .XX ± .01 .XXX ± .005		FRACTIONS ± 1/64 ANGLES ± 0° 30'		CODE				TYPE & TEMPER	HEAT TREAT. SPEC.	DRAWN	CHECKED	FINAL APPROVAL
TOLERANCES												MS5481 ∅
							FINISH & SPEC. NO.		ELEC. DES. APP.	MECH. DES. APP.		

APPLICATION

REVISIONS

QTY	MODEL USED ON	ASSY NO.	LTR	DESCRIPTION	DATE	E.M.N.NO	DRAFT	CHKD	APPD
1	HFRR-4	BMA 298	Ø	ORIGINAL RELEASE	6/11/69	Ø	DAC		

2 MOUNT 1T.1 W/17.2
1 AFTER FINISHING



REQ'D	ITEM	PART NUMBER	DESCRIPTION	SYM.
4	2	EY100-1	EYELET	
1	1	FP160K2.625N	CONTACT, ELECTRIC	

LIST OF MATERIAL			
THE TECHNICAL MATERIEL CORP. MAMARONECK, NEW YORK			
BRACKET, GROUNDING FILTER			

FINAL APPROVAL	DATE
Mech. Des.	6/11/69
ELECT. DES.	6/11/69
CHECKED	DATE
DRAWN	DATE
D.A.C.	6/10/69

UNLESS OTHERWISE SPECIFIED
DIMENSIONS ARE IN INCHES
AND INCLUDE CHEMICALLY APPLIED
OR PLATED FINISHES

DECIMALS 1/64
X ± .05 TOLS. ANGLES 0°-30°
.XX ± .01
.XXX ± .005

MATERIAL: 064 ALUM
5052 H 32

FINISH
5404 YEL. IRIDITE

SIZE	CODE IDENT. NO.	DWG NO.	ISSUE
A	82679	M55492	Ø
SCALE		SHEET	OF

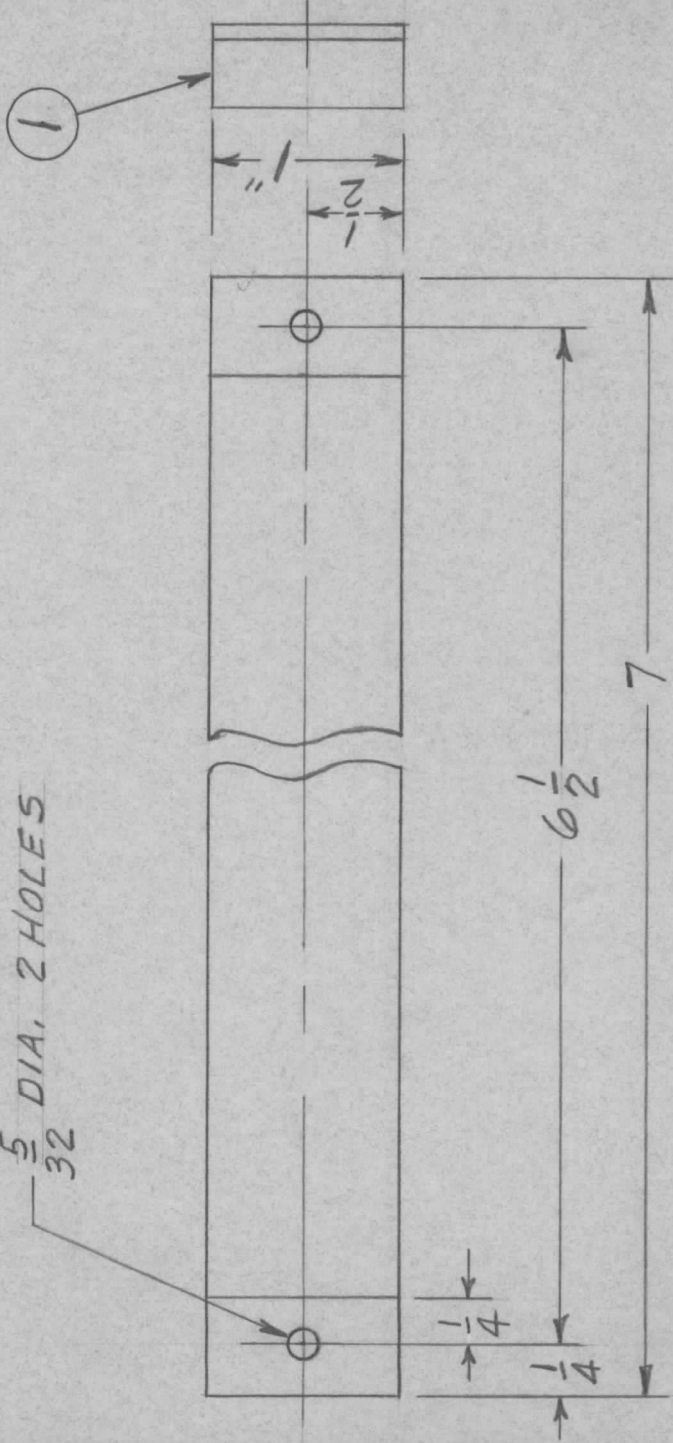
NOTICE TO PERSONS RECEIVING THIS DRAWING
THE TECHNICAL MATERIEL CORPORATION claims proprietary right in the material disclosed hereon. This drawing is issued in confidence for engineering information only and may not be reproduced or used to manufacture anything shown hereon without permission from THE TECHNICAL MATERIEL CORPORATION to the user. This drawing is loaned for mutual assistance and is subject to recall at any time.

APPLICATION

REVISIONS

QTY	MODEL USED ON	ASS'Y NO.	LTR	DESCRIPTION	DATE	E.M.N.NO	DRAFT	CHKD	APPD
2	MTRM150		Ø	ORIGINAL RELEASE	8/10/69		W		

$\frac{5}{32}$ DIA. 2 HOLES



1	1	TA-111-3-8-6.000A	TAPE URETHANE	DESCRIPTION	SYM.
LIST OF MATERIAL SK 3308MS 37					
THE TECHNICAL MATERIEL CORP. MAMARONECK, NEW YORK					
RETAINER PC BD.					
REQ'D ITEM	PART NUMBER	DATE	DATE	DATE	DATE
ROSE SPAN		8/10/69	7/18/69	8/17/69	7-2-69
FINAL APPROVAL					
MECH. DES.					
ELECT. DES.					
CHECKED					
DRAWN	D.A.C.				
UNLESS OTHERWISE SPECIFIED DIMENSIONS ARE IN INCHES AND INCLUDE CHEMICALLY APPLIED OR PLATED FINISHES					
DECIMALS FRACTIONS					
.X ± .05 TOLS. 1/64					
.XX ± .01 ANGLES 0° - 30'					
.XXX ± .005					
MATERIAL.081 ALUM 5052 H 32					
FINISH 5404 YEL. IRIDITE					

NOTICE TO PERSONS RECEIVING THIS DRAWING
 THE TECHNICAL MATERIEL CORPORATION claims proprietary right in the material disclosed hereon. This drawing is issued in confidence for engineering information only and may not be reproduced or used to manufacture anything shown hereon without permission from THE TECHNICAL MATERIEL CORPORATION to the user. This drawing is loaned for mutual assistance and is subject to recall at any time.

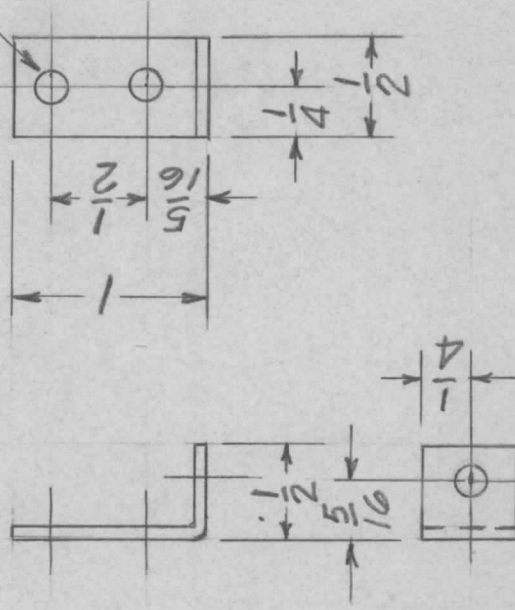
SIZE A	CODE IDENT. NO. 82679	DWG NO. MS 5493	ISSUE Ø
SCALE		SHEET	OF

APPLICATION

REVISIONS

QTY	MODEL USED ON	ASS'Y NO.	LTR	DESCRIPTION	DATE	E.M.N.NO	DRAFT	CHKD	APPD
2	MTRM-150		Ø	ORIGINAL RELEASE	8/8/69		WJ		

$\frac{11}{64}$ DIA. 3 HOLES

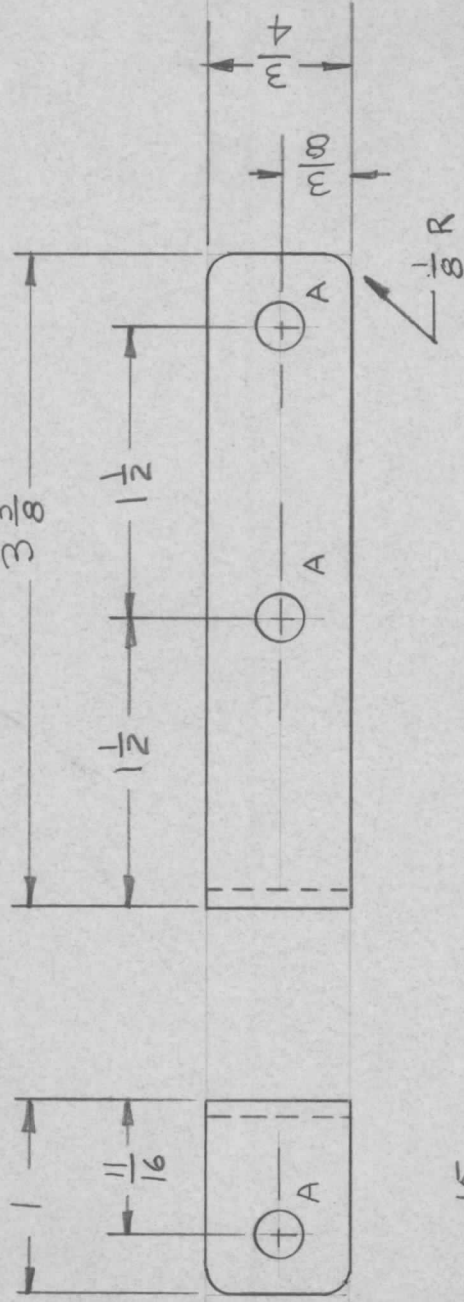


UNLESS OTHERWISE SPECIFIED DIMENSIONS ARE IN INCHES AND INCLUDE CHEMICALLY APPLIED OR PLATED FINISHES		REQ'D ITEM	PART NUMBER	DESCRIPTION	SYM.
DECIMALS X ± .05 .XX ± .01 .XXX ± .005		POSE		LIST OF MATERIAL	
FRACTIONS 1/64		FINAL APPROVAL	DATE	SK 3308 MS 42	
ANGLES 0°-30°		<i>[Signature]</i>	8/8/69	THE TECHNICAL MATERIEL CORP.	
MATERIAL 064 ALUMINUM		MECH. DES.	DATE	MAMARONECK, NEW YORK	
55052 H 32		ELECT. DES.	DATE		
FINISH		CHECKED	DATE		
SA04 YEL. IRIDITE		DRAWN	DATE	BRACKET FOR TRANSF. COVER	
			7/18/69		
			7/18/69		
NOTICE TO PERSONS RECEIVING THIS DRAWING		SIZE	CODE IDENT. NO.	DWG NO.	ISSUE
THE TECHNICAL MATERIEL CORPORATION claims proprietary right in the material disclosed hereon. This drawing is issued in confidence for engineering information only and may not be reproduced or used to manufacture anything shown hereon without permission from THE TECHNICAL MATERIEL CORPORATION to the user. This drawing is loaned for mutual assistance and is subject to recall at any time.		A	82679	MS 5495	Ø
		SCALE	SHEET	OF	

APPLICATION

REVISIONS

QTY	MODEL USED ON	ASS'Y NO.	LTR	DESCRIPTION	DATE	E.M.N.NO	DRAFT	CHKD	APPD
2	HFTM-1KJ	AP150	Ø	ORIG RELEASE FOR PROD	1/25/71		CV		BED.
2	HFTM-1KJ								



A ~ 15/64 DIA. 3 REQ'D

UNLESS OTHERWISE SPECIFIED DIMENSIONS ARE IN INCHES AND INCLUDE CHEMICALLY APPLIED OR PLATED FINISHES	REQ'D ITEM	PART NUMBER	DESCRIPTION	SYM.
DECIMALS X ± .05 .XX ± .01 .XXX ± .005	BUPETTI		LIST OF MATERIAL	
FRACTIONS 1/64	FINAL APPROVAL		THE TECHNICAL MATERIEL CORP.	
TOLS. ANGLES 0°-30°	MECH. DES.	DATE	MAMARONECK, NEW YORK	
MATERIAL .081 ALUM	ELECT. DES.	14 Jan 71		
5052-H32	CHECKED	19 Jan 71		
FINISH	DRAWN	DATE	BRKT, BLEEDER	
S404 VEL IRID		13 Jan 71		
NOTICE TO PERSONS RECEIVING THIS DRAWING		SIZE		
THE TECHNICAL MATERIEL CORPORATION claims proprietary right in the material disclosed hereon. This drawing is issued in confidence for engineering information only and may not be reproduced or used to manufacture anything shown hereon without permission from THE TECHNICAL MATERIEL CORPORATION to the user. This drawing is loaned for mutual assistance and is subject to recall at any time.		CODE IDENT. NO.	DWG NO.	ISSUE
		A 82679	MS5497	Ø
		SCALE	SHEET	OF