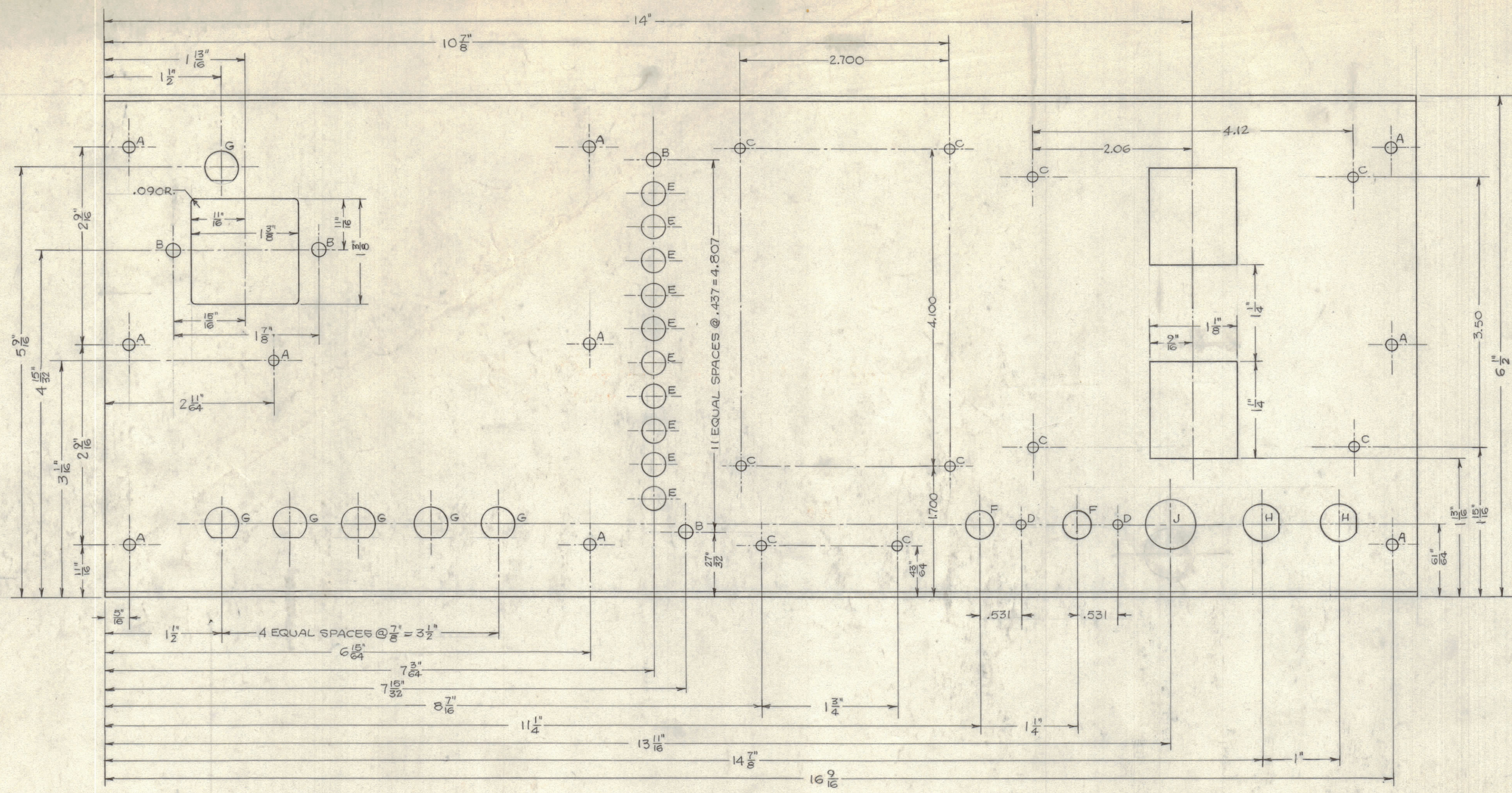
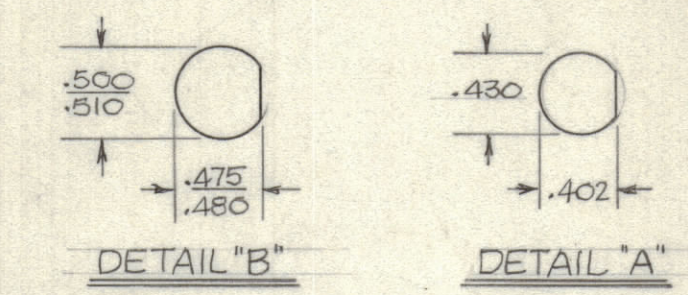
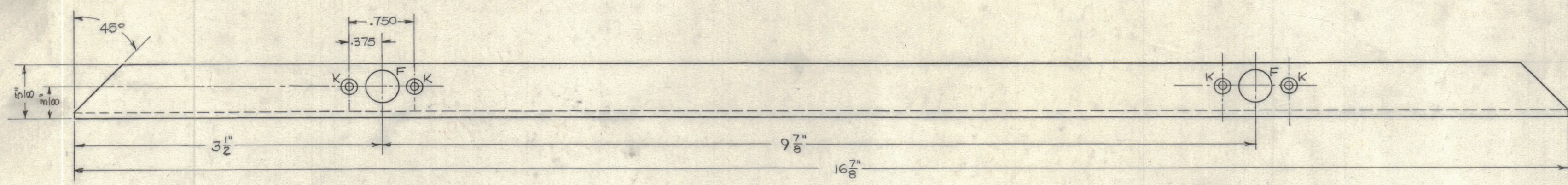


REVISIONS						
ZONE	LTR	DESCRIPTION	DATE	DRAFT	CHK'D	APP'D
	X5	REVISED, REDRAWN & RENUMBERED	5/22/69	RMF		



- GENERAL NOTES**
1. USE MATERIAL THICKNESS FOR MAXIMUM RADIUS ON ALL BENDS.
 2. ALL ANGULAR BENDS 90°
 3. REMOVE ALL BURRS AND SHARP EDGES.
 4. MOUNT INSERTS AFTER FINISHING.

HOLE	QTY.	DESCRIPTION
A	10	.156 DIA.
B	4	.187 DIA.
C	10	.144 DIA.
D	2	.125 DIA.
E	10	.312 DIA.
F	4	.375 DIA.
G	6	SEE DETAIL 'A'
H	2	SEE DETAIL 'B'
J	1	.656 DIA.
K	4	.098 - CSK. 100° TO .187



OPPOSITE SIDE SAME

QTY. REQ.	ITEM	PART NO.	DESCRIPTION	SYMBOL		
LIST OF MATERIAL						
FINAL APPROVAL		DATE		THE TECHNICAL MATERIEL CORP. MAMARONECK, NEW YORK GPR-10 REAR PLATE		
MECH. DES.		DATE				
ELECT. DES.		DATE				
CHECKED		DATE				
DRAWN		DATE				
		R.M. FERNANDEZ		5/22/69		
MATERIAL			SIZE	CODE IDENT. NO.	DWG. NO.	ISSUE
.081 ALUMINUM 5052-H32			D	82679	MS5489	X5
FINISH			SCALE		SHEET OF	
YELLOW IRIDITE S404			FULL		1 OF	

UNLESS OTHERWISE SPECIFIED DIMENSIONS ARE IN INCHES AND INCLUDE CHEMICALLY APPLIED OR PLATED FINISHES

TOLERANCES ON
 DECIMALS FRACTIONS
 .X ± .05 ± 1/64
 .XX ± .01 ± 0°-30'
 .XXX ± .005

QTY / UNIT	MODEL USED ON	ASS'Y NO.
APPLICATION		
CODE		
NOTICE TO PERSONS RECEIVING THIS DRAWING		
<small>THE TECHNICAL MATERIEL CORPORATION claims proprietary right in the material disclosed herein. This drawing is issued in confidence for engineering information only and may not be reproduced or used to manufacture anything shown hereon without permission from THE TECHNICAL MATERIEL CORPORATION to the user. This drawing is loaned for mutual assistance and is subject to recall at any time.</small>		