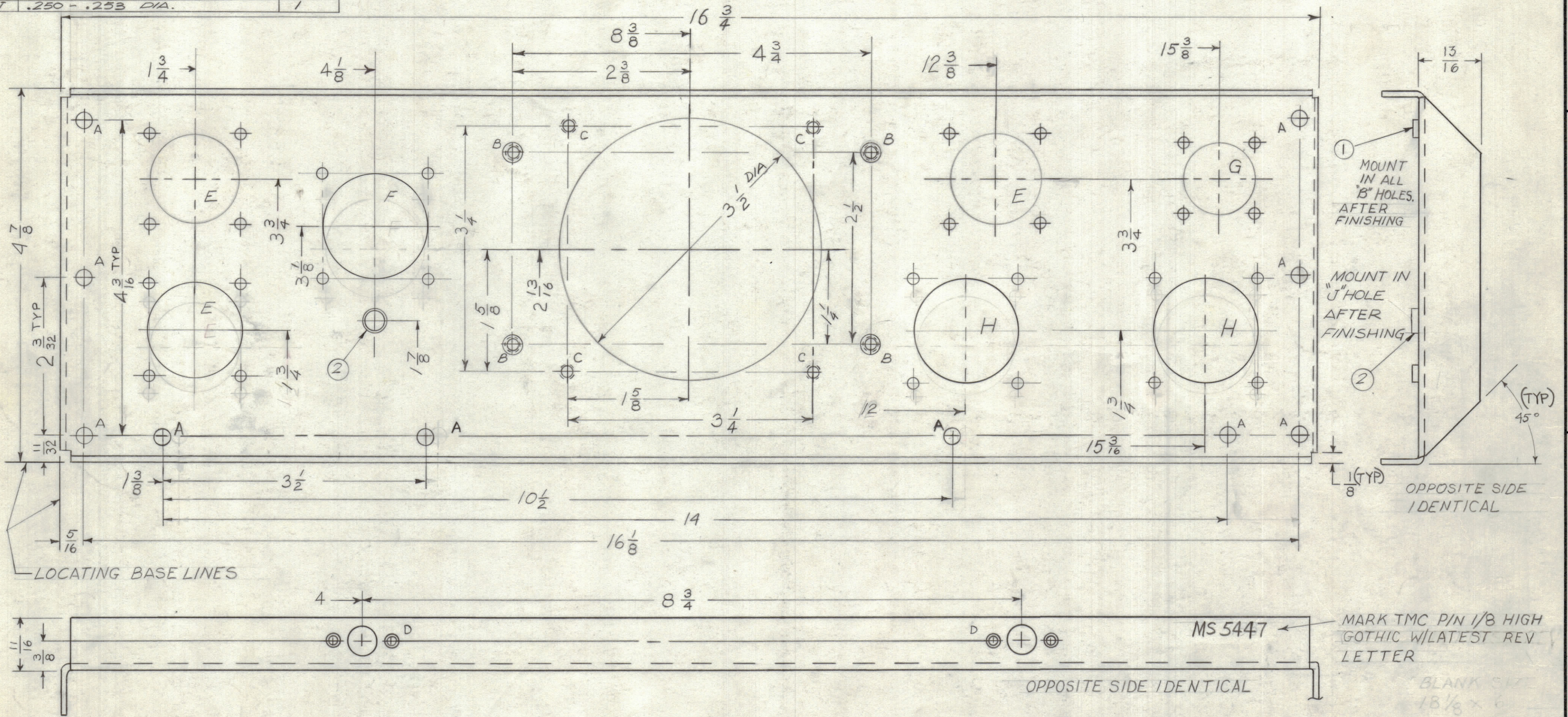
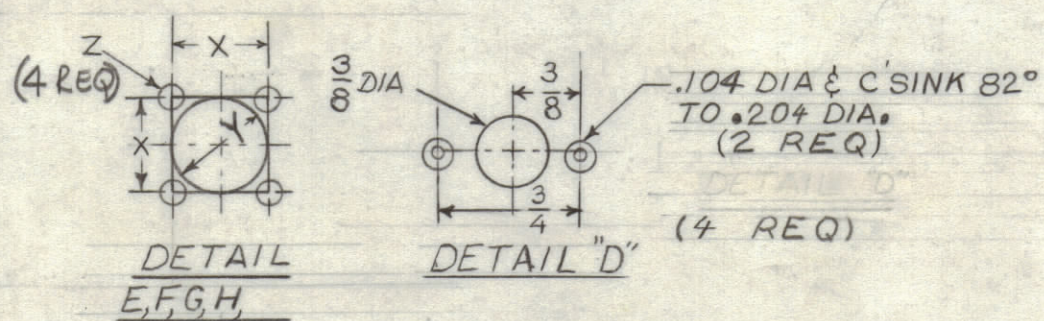


HOLE	DESCRIPTION	REQ'D.
A	13/64 DIA.	10
B	.191-.194 DIA.	4
C	.144 DIA & C'SINK 82° TO .284 DIA	4
D	SEE DETAIL	4
E		3
F		1
G		1
H		2
J	.250-.253 DIA.	1

REVISIONS						
ZONE	LTR	DESCRIPTION	DATE	E.M.N.NO	DRAFT	CHKD APPD
	X	EXP RELEASE	1.17.69		JE	
	Ø	ORIGINAL RELEASE FOR PRODUCTION	24.69		EG	
	A	REVISED & UPDATED	5.9.69	19402	GE	



DETAIL	X	Y	Z
E	1 5/32	1 3/16	9/64
F	1 1/4	1 5/16	9/64
G	2 9/32	1 5/16	9/64
H	1 5/32	1 5/16	9/64



QTY. REQ.	ITEM	PART NO.	DESCRIPTION	SYMBOL
1	2	NT129-1032-4	NUT PLAIN SPLINE	J
4	1	NT129-632-4	NUT, PLAIN, SPLINE	B

LIST OF MATERIAL

FINAL APPROVAL	DATE
<i>[Signature]</i>	2-3-69
MECH. DES.	DATE
<i>[Signature]</i>	2-3-69
ELECT. DES.	DATE
CHECKED	DATE
<i>[Signature]</i>	2-3-69
DRAWN	DATE
<i>[Signature]</i>	1-17-69

THE TECHNICAL MATERIEL CORP.
MAMARONECK, NEW YORK

PLATE, REAR

RTTD-4		
QTY / UNIT	MODEL USED ON	ASS'Y NO.
	APPLICATION	
	CODE	
NOTICE TO PERSONS RECEIVING THIS DRAWING		
THE TECHNICAL MATERIEL CORPORATION claims proprietary right in the material disclosed herein. This drawing is issued in confidence for engineering information only and may not be reproduced or used to manufacture anything shown hereon without permission from THE TECHNICAL MATERIEL CORPORATION to the user. This drawing is loaned for mutual assistance and is subject to recall at any time.		

REF = LD 2344

UNLESS OTHERWISE SPECIFIED DIMENSIONS ARE IN INCHES AND INCLUDE CHEMICALLY APPLIED OR PLATED FINISHES

TOLERANCES ON

DECIMALS	FRACTIONS
.X ± .05	± 1/64
.XX ± .01	ANGLES
.XXX ± .005	± 0° -30'

MATERIAL .081 THK. ALUM
5052 - H32

FINISH S404 YEL
IRIDITE

SIZE	CODE IDENT.NO.	DWG NO.	ISSUE
C	82679	MS 5447	A
SCALE		SHEET	OF

- UNLESS OTHERWISE SPECIFIED:
- USE MATERIAL THICKNESS FOR MAXIMUM RADIUS ON ALL BENDS.
 - ALL ANGULAR BENDS 90 DEGREES.
 - REMOVE ALL BURRS AND SHARP EDGES.
 - MOUNT INSERTS AFTER FINISHING.