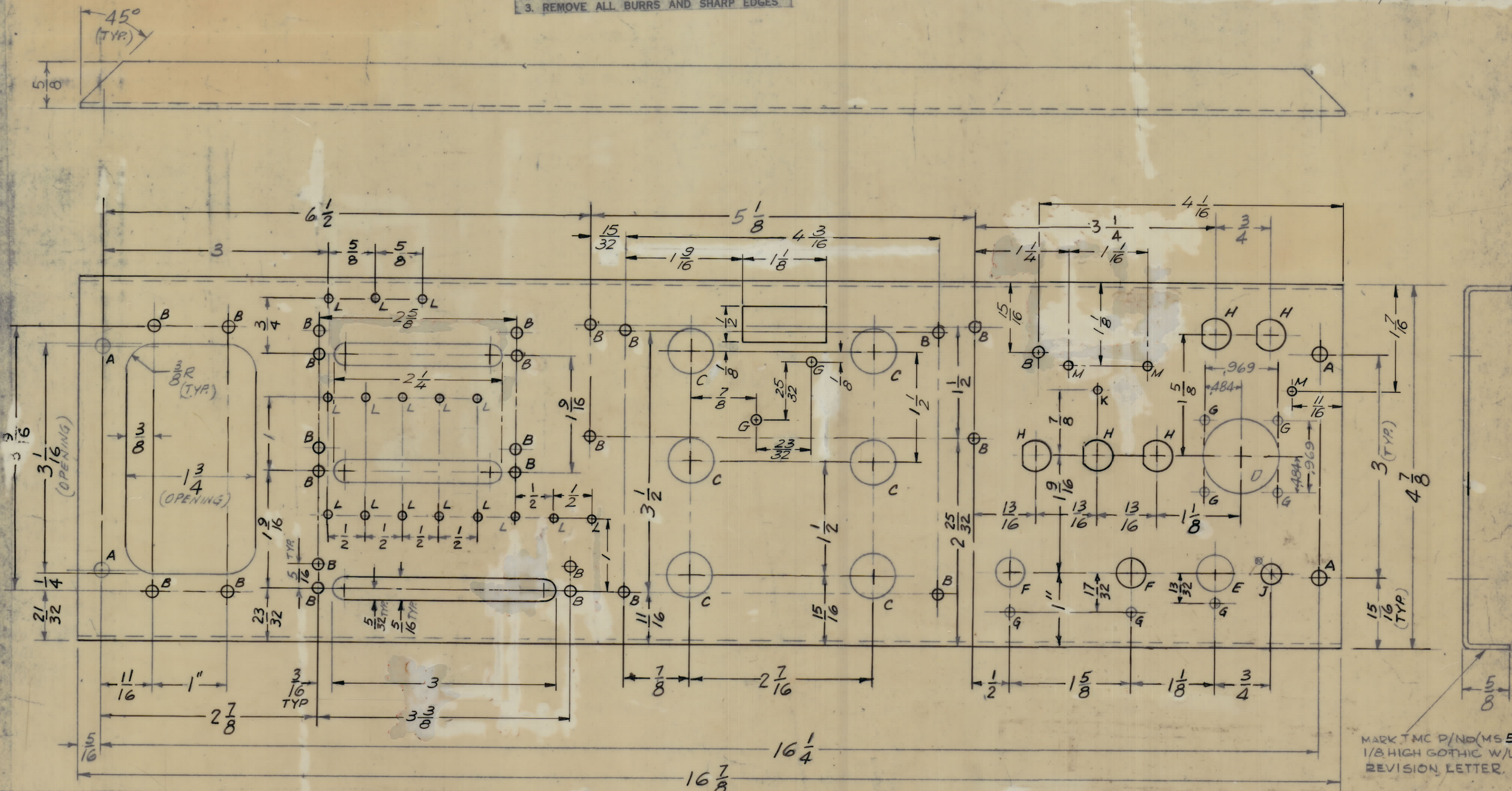


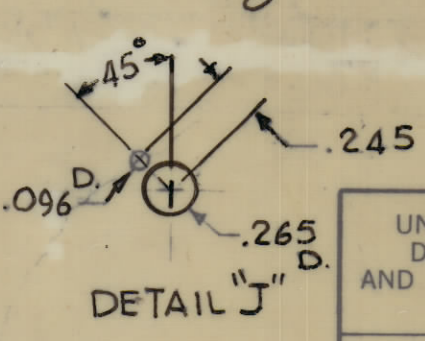
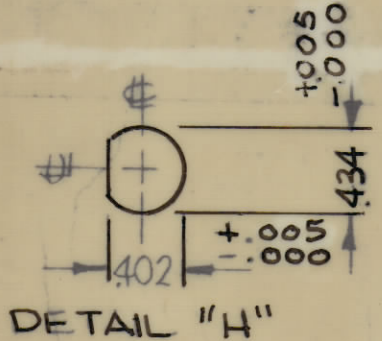
REVISIONS						
ZONE	LTR	DESCRIPTION	DATE	E.M.N.NO	DRAFT	CHKD APPD
	X	EXP. RELEASE			CDL	
	Ø	ORIGINAL RELEASE FOR PROD.	7-22-68		CV	
	A	REVISED & UPDATED	12/69 19155		KH	
	B	REVISED	12/23/69 19684		HH	

UNLESS OTHERWISE SPECIFIED:
 1. USE MATERIAL THICKNESS FOR MAXIMUM RADIUS ON ALL BENDS
 2. ALL ANGULAR BENDS 90 DEGREES
 3. REMOVE ALL BURRS AND SHARP EDGES



MARK TMC P/NO (MS 5386)
 1/8 HIGH GOTHIC W/LATEST
 REVISION LETTER.

HOLE	DESCRIPTION	REQ
A	13/64 DIA	4
B	11/64 DIA	25
C	5/8 DIA	6
D	1-1/32 DIA	1
E	1/2 DIA	1
F	25/64 DIA	2
G	9/64 DIA	9
H	SEE DETAIL	5
J	SEE DETAIL	1
K	.096 DIA	1
L	.106 DIA	16
M	1/8 DIA	3



QTY / UNIT	MODEL USED ON	ASS'Y NO.
1	SME-6	
APPLICATION		
S401-451	CODE A	

NOTICE TO PERSONS RECEIVING THIS DRAWING
 THE TECHNICAL MATERIEL CORPORATION claims proprietary right in the material disclosed herein. This drawing is issued in confidence for engineering information only and may not be reproduced or used to manufacture anything shown hereon without permission from THE TECHNICAL MATERIEL CORPORATION to the user. This drawing is loaned for mutual assistance and is subject to recall at any time.

QTY. REQ.	ITEM	PART NO.	DESCRIPTION	SYMBOL
	Ø POSE		LIST OF MATERIAL	
FINAL APPROVAL		DATE	THE TECHNICAL MATERIEL CORP. MAMARONECK, NEW YORK	
MECH. DES.		DATE	PLATE, REAR	
ELECT. DES.		DATE 8/4/68		
CHECKED		DATE 7-22-68		
DRAWN		DATE 3-22-68	SIZE CODE IDENT. NO. DWG. NO. ISSUE	
MATERIAL .063 ALUMINUM 5052-H32			C 82679	MS 5386 B
FINISH S404 YELLOW IRIDIOTE			SCALE 1:1	SHEET OF