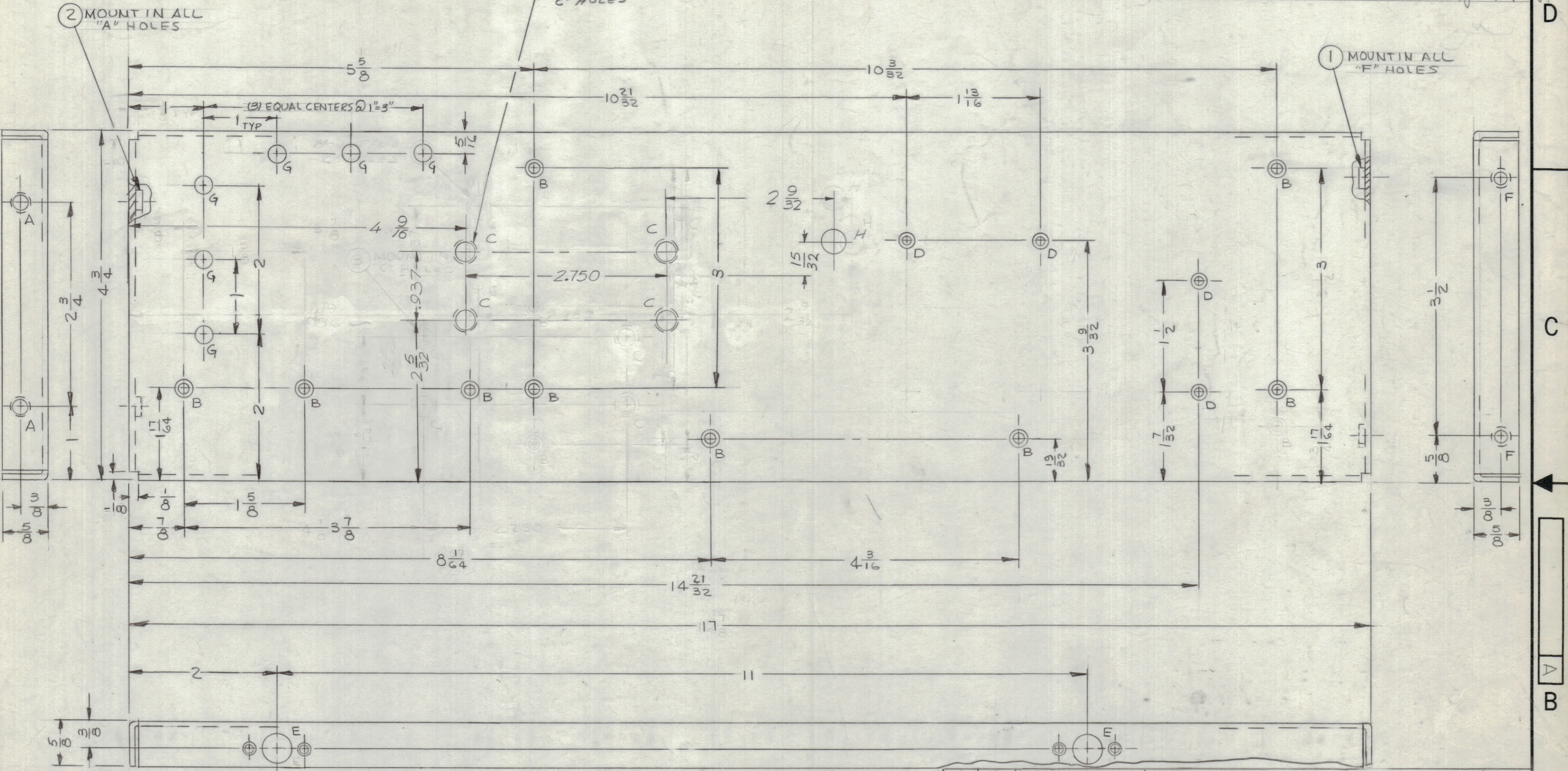


ZONE	LTR	DESCRIPTION	DATE	E.M.N.O	DRAFT	CHKD	APPD
X1		ADDED "G" HOLES	4/10/68		JL		
X2		ADDED "H" HOLE	11-1-68		H.S.		
Ø		ORIGINAL RELEASE FOR PRODUCTION	11/18/68	Ø	H.S.		
A		DIM CHG 2 5/32 WAS 2 1/8	5/20/69	19426	GE	JL	Ø



(OPPOSITE SIDE IDENTICAL)

HOLE	DESCRIPTION	REQ
A	.221-.224 DIA	2
B	.144 DIA & C'SINK 82° TO .284 DIA	9
C	.250-.253 DIA	4
D	.120 DIA & C'SINK 82° TO .230 DIA	4
E	SEE DETAIL	4
F	.191-.194 DIA	2
G	1/4 DIA	6

HOLE	DESCRIPTION	REQ
H	5/16 DIA. SIF HAND WITHOUT D HOLES	

QTY. REQ.	ITEM	PART NO.	DESCRIPTION	SYMBOL
4	3	NT129-1032-4	NUT, PLAIN, SPLINE	C
2	2	NT129-832-4	NUT, PLAIN, SPLINE	A
2	1	NT129-632-4	NUT, PLAIN, SPLINE	F

LIST OF MATERIAL SK3252-004-6

UNLESS OTHERWISE SPECIFIED DIMENSIONS ARE IN INCHES AND INCLUDE CHEMICALLY APPLIED OR PLATED FINISHES

TOLERANCES ON

DECIMALS	FRACTIONS
.X ± .05	± 1/64
.XX ± .01	ANGLES
.XXX ± .005	± 0° -30'

MATERIAL  
-081 THK ALUMINUM  
S052-H32

FINISH  
YELLOW IRIDITE  
S404

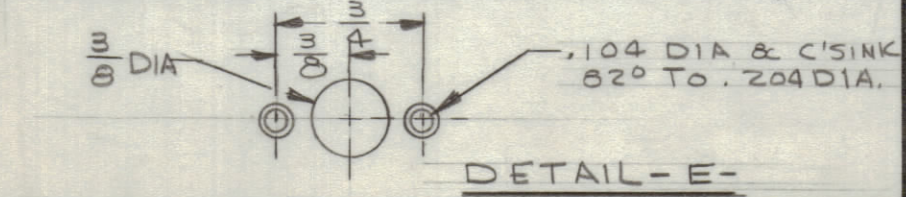
FINAL APPROVAL	DATE
<i>[Signature]</i>	11/8/68
MECH. DES	DATE
<i>[Signature]</i>	11/8/68
ELECT. DES.	DATE
CHECKED	DATE
<i>[Signature]</i>	11/2/67
DRAWN	DATE
JL	9/12/67

THE TECHNICAL MATERIEL CORP.  
MAMARONECK, NEW YORK

PLATE, SIDE - RIGHT

SIZE	CODE IDENT. NO.	DWG NO.	ISSUE
C	82679	MS5359	A

SCALE SHEET OF



NOTICE TO PERSONS RECEIVING THIS DRAWING  
THE TECHNICAL MATERIEL CORPORATION claims proprietary right in the material disclosed herein. This drawing is issued in confidence for engineering information only and may not be reproduced or used to manufacture anything shown hereon without permission from THE TECHNICAL MATERIEL CORPORATION to the user. This drawing is loaned for mutual assistance and is subject to recall at any time.