

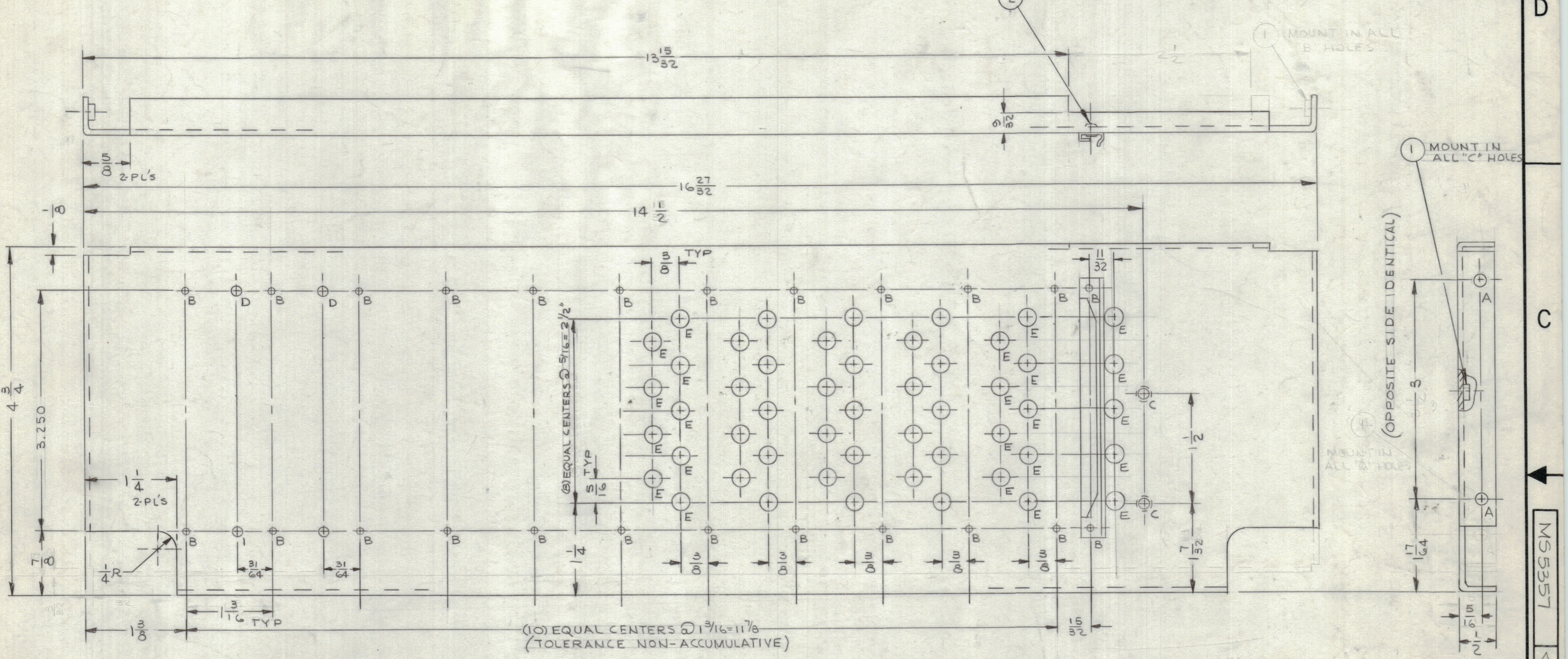
4

3

2

1

REVISIONS							
ZONE	LTR	DESCRIPTION	DATE	E.M.N.O	DRAFT	CHKD	APPD
X1		ADDED "E" HOLES	4/3/68		JL		
X2		11/32 DIM. ADDED FOR ADDITION OF 5E HOLES	8-2-68				
B		ORIGINAL RELEASE FOR PRODUCTION	11-1-68		R.S.		
A		ITEM 1 QTY (2 WAS 4)	2-18-69	19236	GE		



HOLE LEGEND		
HOLE	DESCRIPTION	REQ.
A	11/64 DIA	4
B	NO. 51 (.0670) DRILL	24
C	.161-.164 DIA	2
D	9/64 DIA	4
E	1/4 DIA	50

QTY. REQ.	ITEM	PART NO.	DESCRIPTION	SYMBOL
2	4	NT129-440-4	NUT, PLAIN, SPLINE	C
24	3	EY.101-4 (31 MP32W)	EYELET	
12	2	CU157-4	RETAINER, P.C. CARD	B
2	1	NT129-440-4	NUT, PLAIN, SPLINE	C

REF: LD 2300

UNLESS OTHERWISE SPECIFIED DIMENSIONS ARE IN INCHES AND INCLUDE CHEMICALLY APPLIED OR PLATED FINISHES

TOLERANCES ON	
DECIMALS	FRACTIONS
.X ± .05	± 1/64
.XX ± .01	ANGLES
.XXX ± .005	± 0° .30'

MATERIAL
.063 THK ALUMINUM
5052-H32

FINISH
YELLOW IRIDITE
S404

FINAL APPROVAL	DATE
<i>[Signature]</i>	11/7/68
MECH. DES.	DATE
M. ZETENA	
ELECT. DES.	DATE
CHECKED	DATE
SG	8/2/68
DRAWN	DATE
J.L.	9/8/67

THE TECHNICAL MATERIEL CORP.
MAMARONECK, NEW YORK

PLATE, REAR - P.C. BIN

QTY / UNIT	MODEL USED ON	ASS'Y NO.
1	HFSR-4	
APPLICATION		
	CODE	
NOTICE TO PERSONS RECEIVING THIS DRAWING		
THE TECHNICAL MATERIEL CORPORATION claims proprietary right in the material disclosed hereon. This drawing is issued in confidence for engineering information only and may not be reproduced or used to manufacture anything shown hereon without permission from THE TECHNICAL MATERIEL CORPORATION to the user. This drawing is loaned for mutual assistance and is subject to recall at any time.		

SIZE	CODE IDENT. NO.	DWG NO.	ISSUE
C	82679	MS5357	A
SCALE		SHEET	OF

A

A

B

B

C

C

D

D