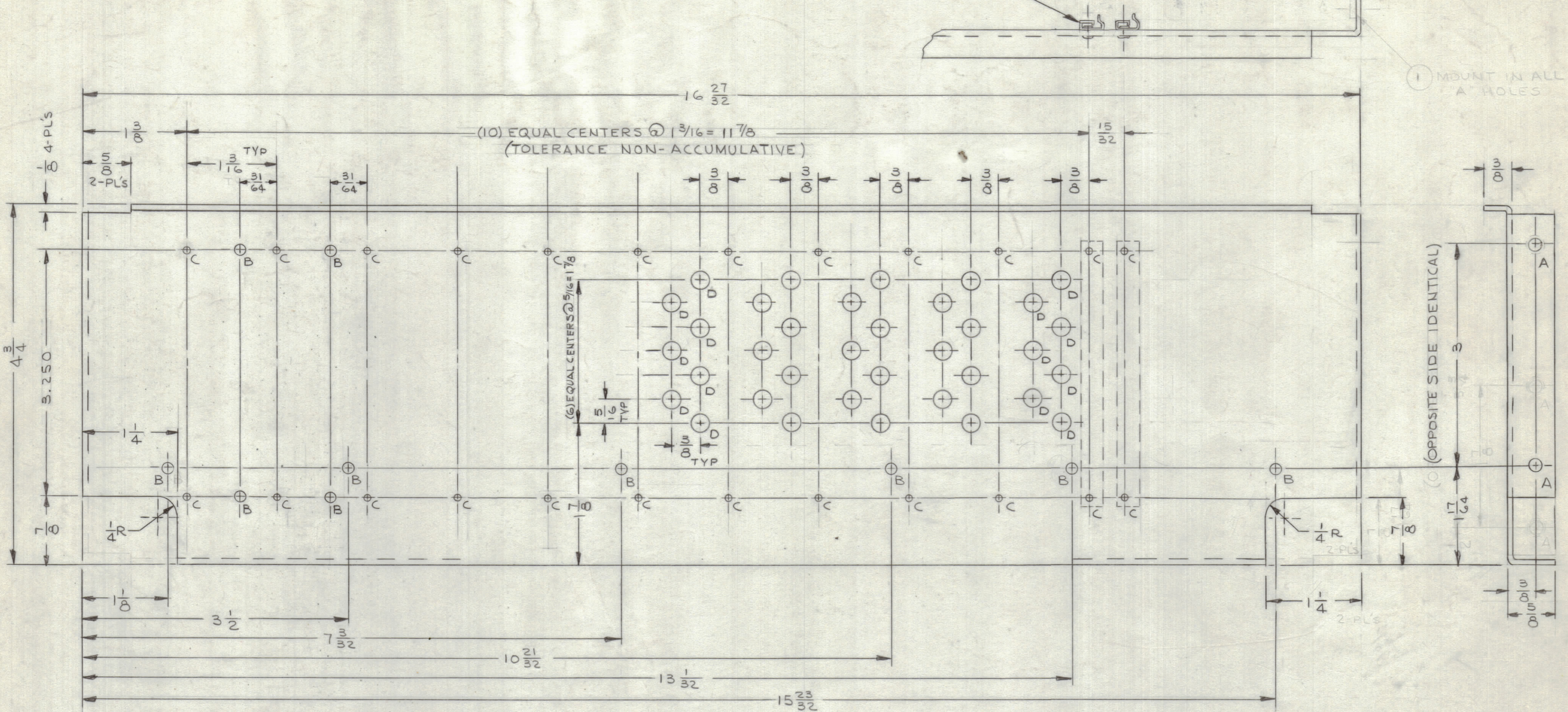


REVISIONS							
ZONE	LTR	DESCRIPTION	DATE	E.M.N.NO	DRAFT	CHKD	APPD
	X	ADDED "D" HOLES	4/3/68		JL		
		ORIGINAL RELEASE FOR PRODUCTION	11-7-68		P.G.		JL



HOLE LEGEND		
HOLE	DESCRIPTION	REQ
A	1/16 DIA DIA	4
B	9/64 DIA	10
C	NO. 51 (.0670) DRILL	24
D	1/4 DIA	35

QTY. REQ.	ITEM	PART NO.	DESCRIPTION	SYMBOL
24	3	EY101-4 (REF STAMP 228)	EYELET	
12	2	CU157-4	RETAINER, P.C. CARD	
6	1	DELETED 2-4	NUT, PLAIN, SPLINE	

UNLESS OTHERWISE SPECIFIED DIMENSIONS ARE IN INCHES AND INCLUDE CHEMICALLY APPLIED OR PLATED FINISHES

FINAL APPROVAL: *[Signature]* DATE: 11/8/68
 MECH. DES. DATE:
 M. ZETENA
 ELECT. DES. DATE:
 CHECKED: SG DATE: 9/11/67
 DRAWN: JL DATE: 9/8/67

TOLERANCES ON
 DECIMALS .X ± .05
 .XX ± .01
 .XXX ± .005
 FRACTIONS ± 1/64
 ANGLES ± 0° .30'

MATERIAL: .063 THK ALUMINUM 5052-H32
 FINISH: YELLOW IRIDITE 3404

LIST OF MATERIAL SK 3252-004-3

THE TECHNICAL MATERIEL CORP.
 MAMARONECK, NEW YORK

PLATE, FRONT - P.C. BIN

SIZE: C CODE IDENT. NO.: 82679 DWG NO.: MS 5356 ISSUE: 1
 SCALE: SHEET OF

1	HFSR-4	
QTY / UNIT	MODEL USED ON	ASS'Y NO.
APPLICATION		
CODE		
NOTICE TO PERSONS RECEIVING THIS DRAWING		
THE TECHNICAL MATERIEL CORPORATION claims proprietary right in the material disclosed hereon. This drawing is issued in confidence for engineering information only and may not be reproduced or used to manufacture anything shown hereon without permission from THE TECHNICAL MATERIEL CORPORATION to the user. This drawing is loaned for mutual assistance and is subject to recall at any time.		