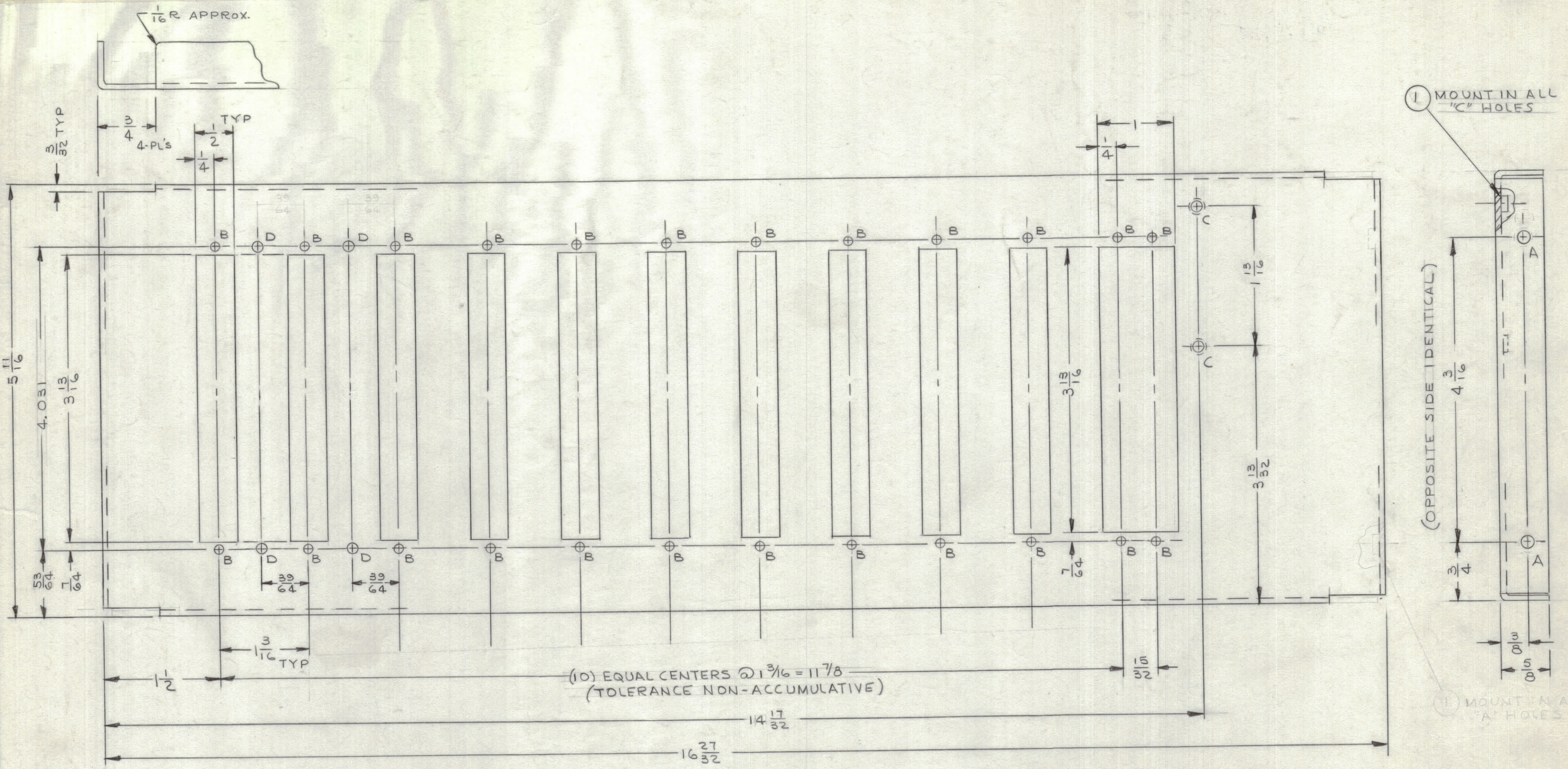


REVISIONS							
ZONE	LTR	DESCRIPTION	DATE	E.M.N.NO	DRAFT	CHKD	APPD
C2	Ø	ORIGINAL RELEASE FOR PRODUCTION	11-7-68	Ø	R.G.		JL



HOLE LEGEND		
HOLE	DESCRIPTION	REQ
A	1/64 DIA DIA	4
B	1/8 DIA	24
C	.161-.164 DIA	2
D	9/64 DIA	4

REF: LD2304

QTY. REQ.	ITEM	PART NO.	DESCRIPTION	SYMBOL
2	2	NT129-440-4	NUT, PLAIN, SPLINE	C
2	1	NT129-440-4	NUT, PLAIN, SPLINE	C

LIST OF MATERIAL SK3252-004-5

1	HFSR-4	
QTY / UNIT	MODEL USED ON	ASS'Y NO.
APPLICATION		
CODE		

UNLESS OTHERWISE SPECIFIED DIMENSIONS ARE IN INCHES AND INCLUDE CHEMICALLY APPLIED OR PLATED FINISHES		FINAL APPROVAL <i>[Signature]</i> MECH. DES. M ZETENA ELECT. DES.	DATE 11/7/68 DATE DATE DATE
TOLERANCES ON		CHECKED <i>[Signature]</i>	DATE 10/30/68
DECIMALS	FRACTIONS	DRAWN JL	DATE 9/11/67
.X ± .05	± 1/64		
.XX ± .01	ANGLES		
.XXX ± .005	± 0° -30'		

THE TECHNICAL MATERIEL CORP.
MAMARONECK, NEW YORK

CHASSIS, CONNECTOR-P.C. BIN

NOTICE TO PERSONS RECEIVING THIS DRAWING
THE TECHNICAL MATERIEL CORPORATION claims proprietary right in the material disclosed hereon. This drawing is issued in confidence for engineering information only and may not be reproduced or used to manufacture anything shown hereon without permission from THE TECHNICAL MATERIEL CORPORATION to the user. This drawing is loaned for mutual assistance and is subject to recall at any time.

MATERIAL	.063 THK ALUMINUM 5052-H32
FINISH	YELLOW IRIDITE S404

SIZE	CODE IDENT.NO.	DWG NO.	ISSUE
C	82679	MS5354	Ø
SCALE	SHEET		OF