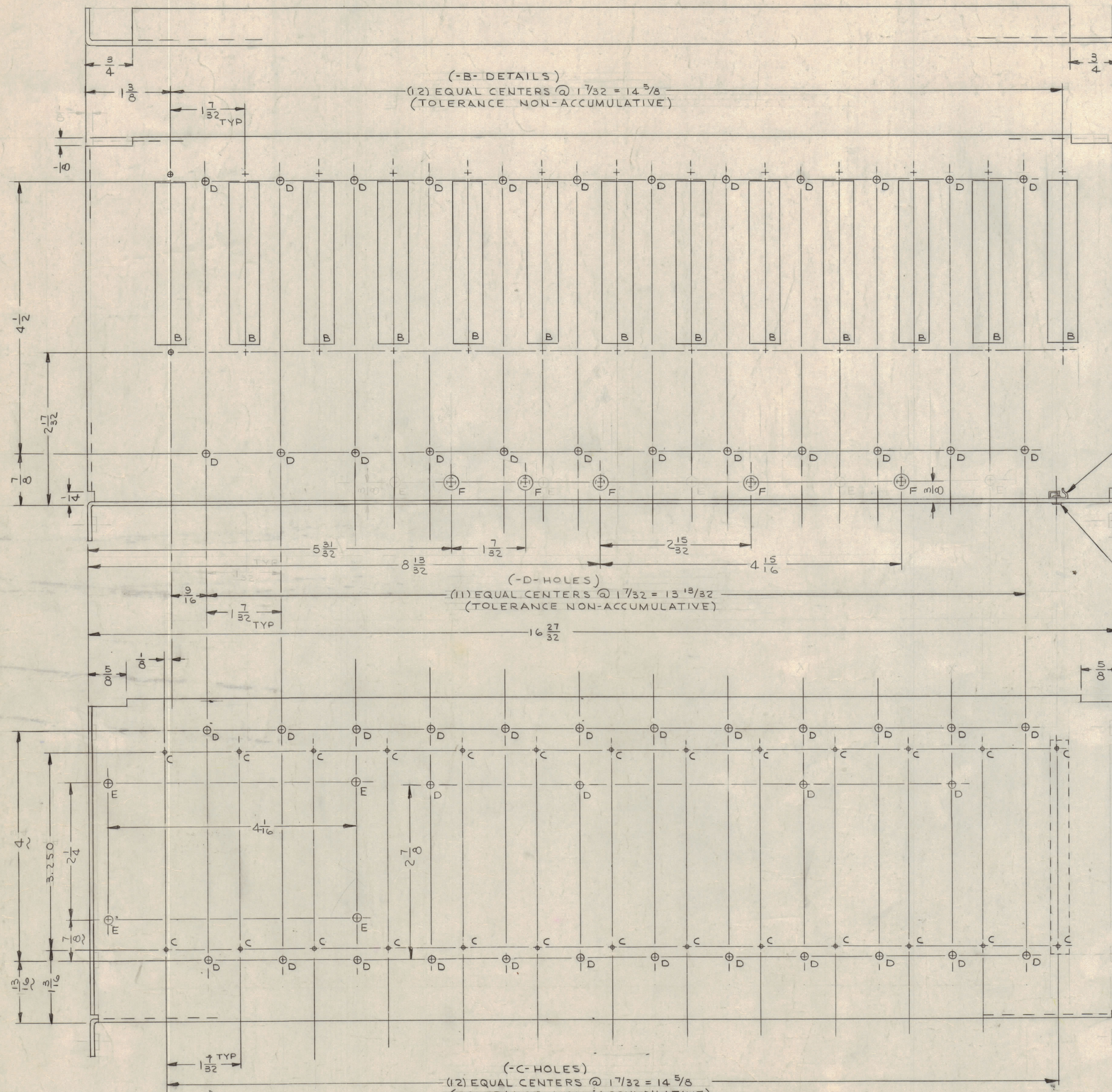
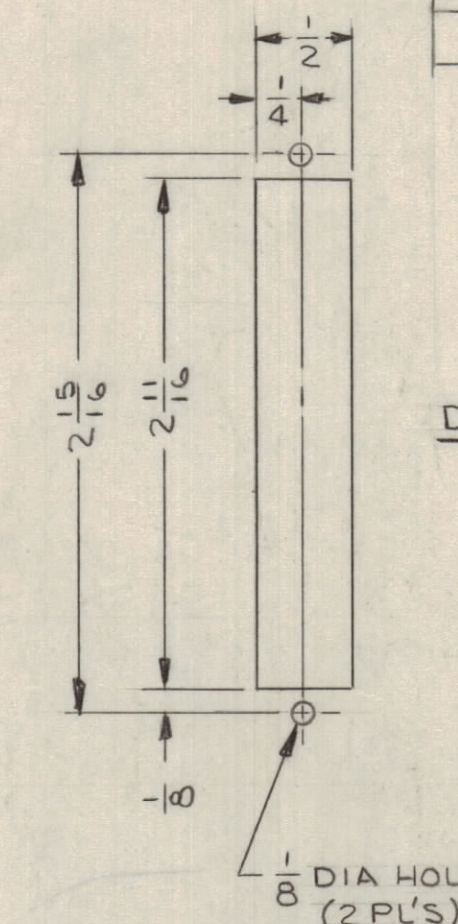


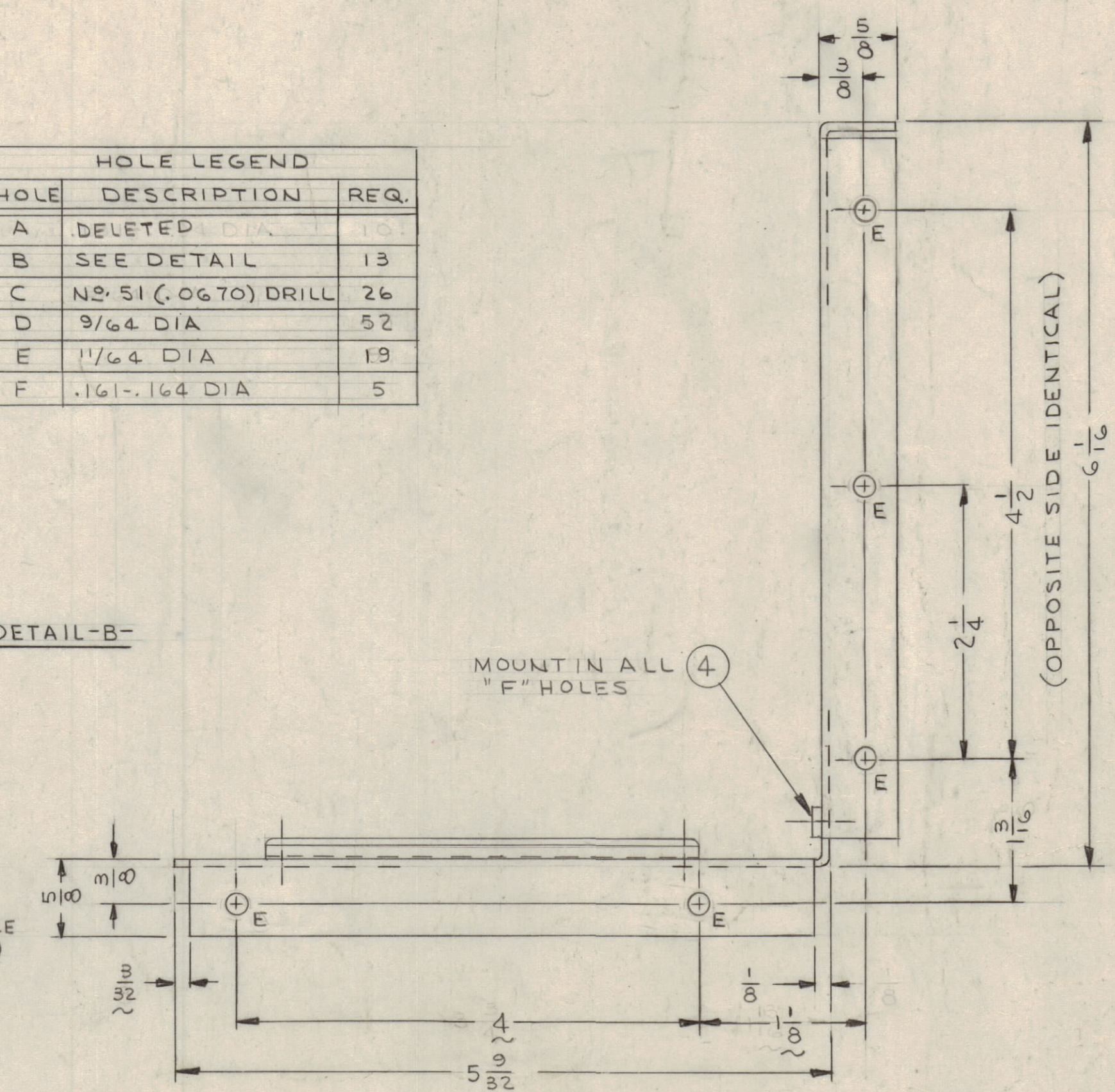
REVISIONS						
ZONE	LTR	DESCRIPTION	DATE	E.M.N.NO	DRAFT	CHKD
		ORIGINAL RELEASE FOR PRODUCTION	11-8-68		RG	



HOLE	DESCRIPTION	REQ.
A	DELETED	10
B	SEE DETAIL	13
C	NO. 51 (.0670) DRILL	26
D	9/64 DIA	52
E	1/64 DIA	19
F	.161-.164 DIA	5



DETAIL-B-



REF: LD 2292

QTY. REQ.	ITEM	PART NO.	DESCRIPTION	SYMBOL
5	4	NT129-440-4	NUT, PLAIN, SPLINE	F
26	3	EY10H-4 (SIMPSON #A1280)	EYELET	C
13	2	CU15T-4	RETAINER, PC BD	
10	1	DELETED	NUT, PLAIN, SPLINE	A

LIST OF MATERIAL

THE TECHNICAL MATERIEL CORP.
MAMARONECK, NEW YORK

CHASSIS - P.C. CARDS

MSAR-4		
QTY / UNIT	MODEL USED ON	ASS'Y NO.
APPLICATION		
CODE		
MATERIAL		
FINISH		
NOTICE TO PERSONS RECEIVING THIS DRAWING		
THE TECHNICAL MATERIEL CORPORATION claims proprietary right in the material disclosed hereon. This drawing is issued in confidence for engineering information only and may not be reproduced or used to manufacture anything shown hereon without permission from THE TECHNICAL MATERIEL CORPORATION to the user. This drawing is loaned for mutual assistance and is subject to recall at any time.		

TOLERANCES ON	
DECIMALS	FRACTIONS
.X ± .05	± 1/64
.XX ± .01	ANGLES
.XXX ± .005	± 0° -30'

FINAL APPROVAL	DATE
<i>[Signature]</i>	11/7/68
MECH. DES.	DATE
<i>[Signature]</i>	11/6/68
ELECT. DES.	DATE
CHECKED	DATE
<i>[Signature]</i>	5/10/67
DRAWN	DATE
<i>[Signature]</i>	4/16/67

MATERIAL	SIZE	CODE IDENT. NO.	DWG NO.	ISSUE
063 THK ALUMINUM	D	82679	MS 5337	1
FINISH	SCALE	1/1		SHEET OF
YELIRIDITE S404		SK3252-005-2		