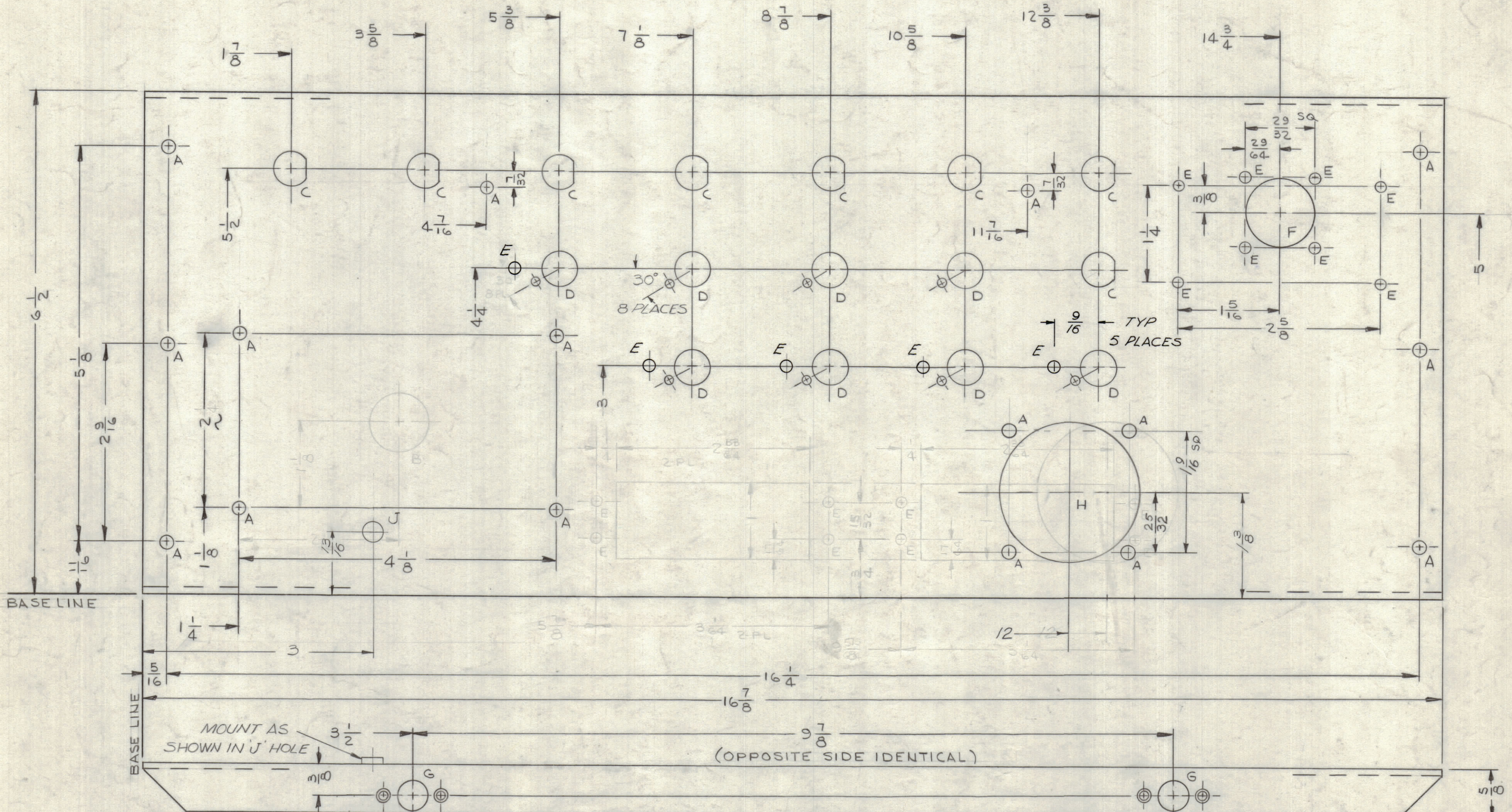
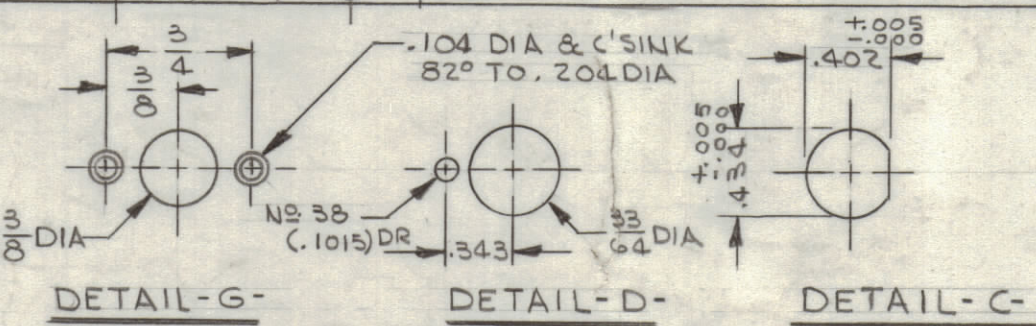


| REVISIONS |     |  |         |          |       |           |
|-----------|-----|--|---------|----------|-------|-----------|
| ZONE      | LTR | DESCRIPTION  | DATE    | E.M.N.NO | DRAFT | CHKD APPD |
|           |     | ORIGINAL RELEASE FOR PRODUCTION                                      | 11-7-65 |          | RG.   |           |
|           | A   | A DTY 16 WAS 12, E DTY 8 WAS 12<br>RECT. HOLE DELETED-ADD 1" H. HOLE | 1-28-69 | 19281    | GE    | FFM       |
|           | B   | REVISED & UPDATED  | 5-20-69 | 19477    | GE    | JL        |



| HOLE LEGEND |                  |     |
|-------------|------------------|-----|
| HOLE        | DESCRIPTION      | REQ |
| A           | 11/64 DIA        | 16  |
| B           | DELETED          |     |
| C           | SEE DETAIL       | 8   |
| D           | SEE DETAIL       | 8   |
| E           | 9/64 DIA         | 13  |
| F           | 13/16 DIA        | 1   |
| G           | SEE DETAIL       | 4   |
| H           | 1 13/16 DIA      | 1   |
| J           | .250 - .253 DIA. | 1   |



REF: LD 2293

| QTY / UNIT  | MODEL USED ON | ASS'Y NO. |
|-------------|---------------|-----------|
| 1           | MSAR-4        |           |
| APPLICATION |               |           |
| CODE        |               |           |

NOTICE TO PERSONS RECEIVING THIS DRAWING  
 THE TECHNICAL MATERIEL CORPORATION claims proprietary right in the material disclosed hereon. This drawing is issued in confidence for engineering information only and may not be reproduced or used to manufacture anything shown hereon without permission from THE TECHNICAL MATERIEL CORPORATION to the user. This drawing is loaned for mutual assistance and is subject to recall at any time.

UNLESS OTHERWISE SPECIFIED DIMENSIONS ARE IN INCHES AND INCLUDE CHEMICALLY APPLIED OR PLATED FINISHES

TOLERANCES ON

|             |            |
|-------------|------------|
| DECIMALS    | FRACTIONS  |
| .X ± .05    | ± 1/64     |
| .XX ± .01   | ANGLES     |
| .XXX ± .005 | ± 0° - 30' |

MATERIAL  
 .081 THK ALUMINUM  
 5052-H32

FINISH  
 YELLOW IRIDITE  
 S404

| QTY. REQ. | ITEM | PART NO.     | DESCRIPTION      | SYMBOL |
|-----------|------|--------------|------------------|--------|
| 1         | 1    | NT/29-1032-4 | NUT PLAIN SPLINE |        |

LIST OF MATERIAL

THE TECHNICAL MATERIEL CORP.  
 MAMARONECK, NEW YORK

PLATE, REAR

| SIZE | CODE IDENT.NO. | DWG NO.    | ISSUE |
|------|----------------|------------|-------|
| C    | 82679          | MS 53285-6 | B     |

SCALE 1/1 SHEET OF