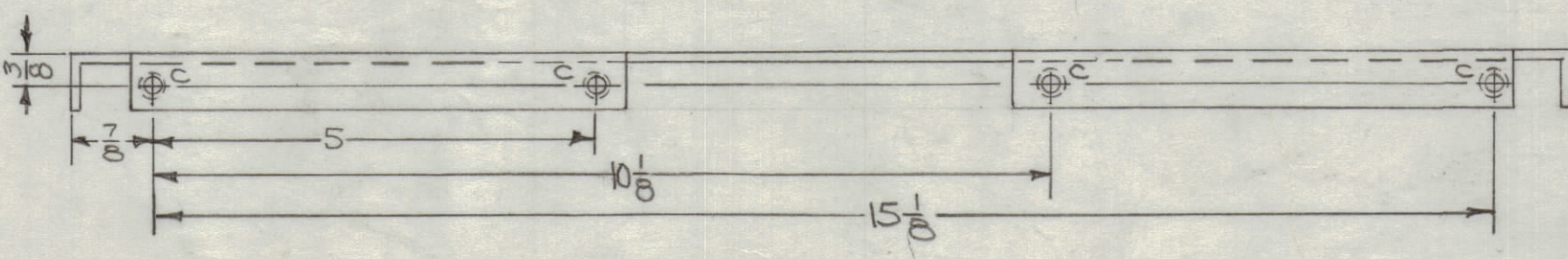
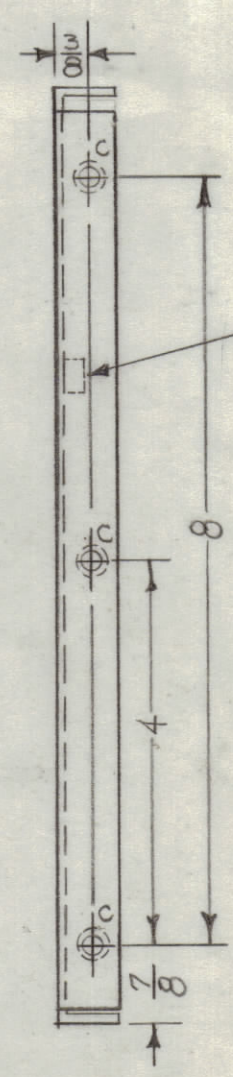
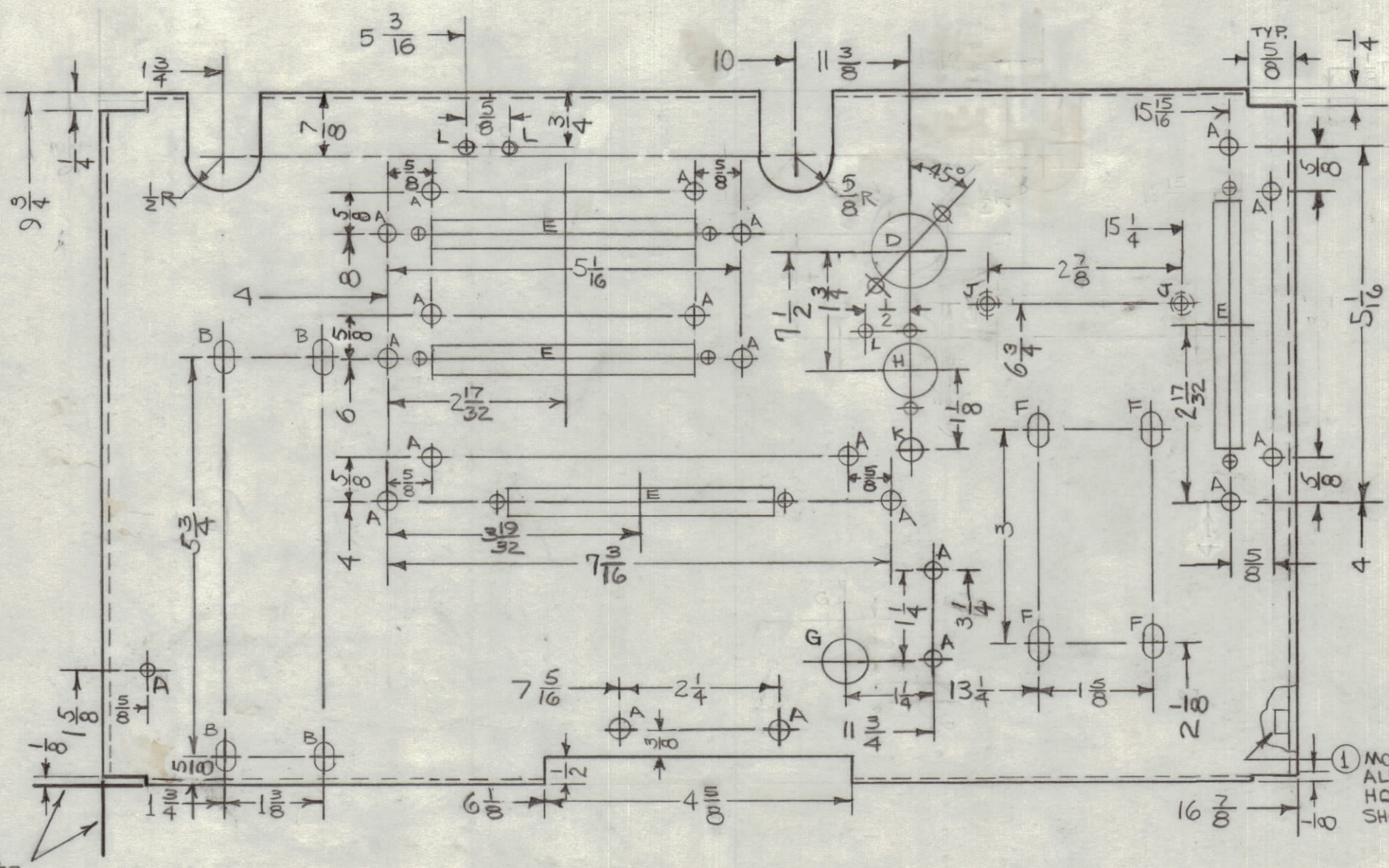
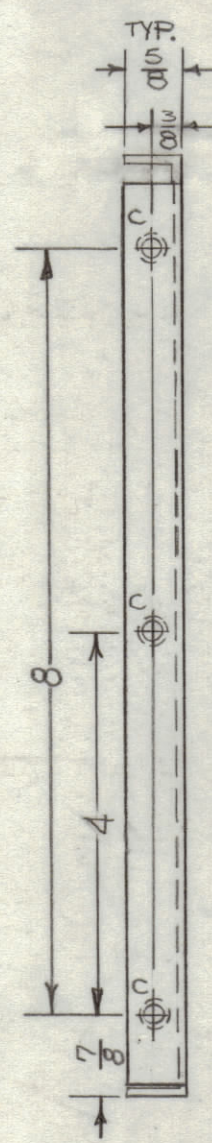
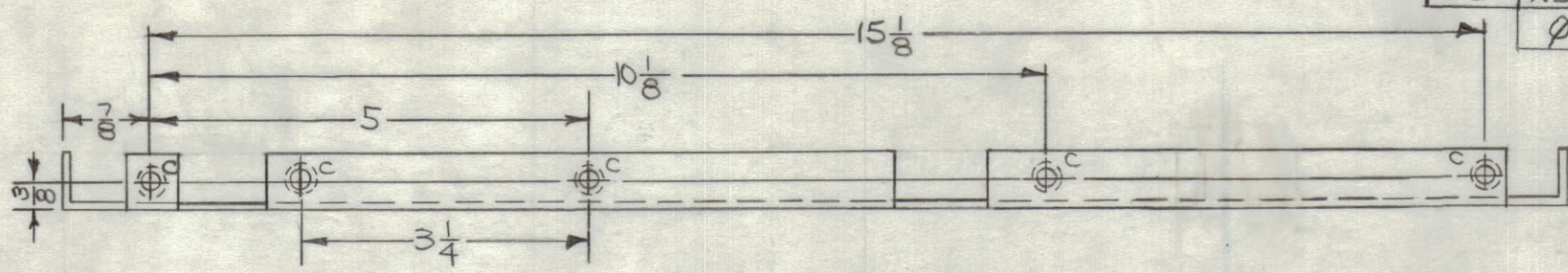
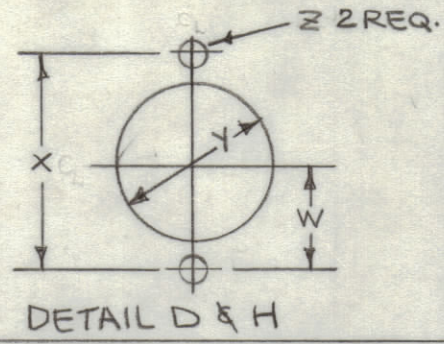
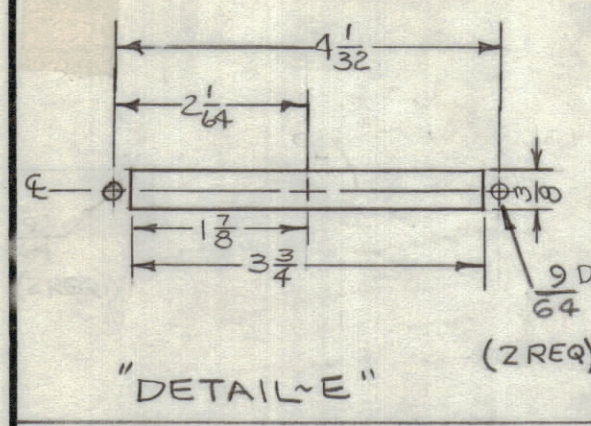


| REVISIONS | | | | | | |
|-----------|-----|-------------------------------------|---------|----------|-------|-----------|
| ZONE | LTR | DESCRIPTION | DATE | E.M.N.NO | DRAFT | CHKD APPD |
| | X1 | G HOLE WAS CENTERED ON A HOLES | 1-16-68 | | | AP |
| | X2 | 3/4 WAS 3/8 - DETAIL H, Z WAS 11/64 | 1-30-68 | | AP | AP |
| | X3 | TWO 1/4" DIMENSIONS WERE 1/8" | 2-5-68 | | AP | AP |
| | X4 | 1/2 R. WAS 5/8 R. | 2-7-68 | | A.P. | AP |
| C3 | X5 | TWO "L" HOLES ADDED | 4-22-68 | | G.D.L | AP |
| | Ø | ORIGINAL RELEASE FOR PRODUCTION | 5.7.68 | | Ø | Ø |

| DETAIL | W | X | Y | Z |
|--------|------|-----|-----|-------|
| D | 3/4 | 1/2 | 1/8 | 11/64 |
| H | 9/16 | 1/8 | 3/4 | 9/64 |



| HOLE | DESCRIPTION | REQ. |
|------|---------------------|------|
| A | 11/64 DIA | 21 |
| B | 13/64 BY 13/32 SLOT | 4 |
| C | .221-.224 DIA. | 15 |
| D | SEE DETAIL | 1 |
| E | SEE DETAIL | 4 |
| F | 11/64 BY 1/8 SLOT | 4 |
| G | 5/8 DIA. | 1 |
| H | SEE DETAIL | 1 |
| J | .189 DIA. | 2 |
| K | 1/4 DIA. | 1 |
| L | 9/64 DIA. | 3 |

| QTY. REQ. | ITEM | PART NO. | DESCRIPTION | SYMBOL |
|-----------|------|-------------|--------------------|--------|
| 2 | 2 | TE108-30 | NUT, PLAIN, CLINCH | J |
| 15 | 1 | NT129-832-4 | NUT, PLAIN, SPLINE | C |

BUDETTI LIST OF MATERIAL

FINAL APPROVAL: *[Signature]* DATE: *[Blank]*

MECH. DES. A. PETROCCA DATE: 12-19-67

ELECT. DES. *[Signature]* DATE: 5-7-68

CHECKED: *[Signature]* DATE: 5-7-68

DRAWN: A. PETROCCA DATE: 12-19-67

THE TECHNICAL MATERIEL CORP. MAMARONECK, NEW YORK

CHASSIS, MAIN

SIZE: C CODE IDENT. NO.: 82679 DWG. NO.: MS 5309 ISSUE: Ø

SCALE: DO NOT SCALE SHEET: OF

1 SWCD-3K

QTY / UNIT MODEL USED ON ASS'Y NO.

APPLICATION

CODE A S401-451

NOTICE TO PERSONS RECEIVING THIS DRAWING

THE TECHNICAL MATERIEL CORPORATION claims proprietary right in the material disclosed herein. This drawing is issued in confidence for engineering information only and may not be reproduced or used to manufacture anything shown herein without permission from THE TECHNICAL MATERIEL CORPORATION to the user. This drawing is loaned for mutual assistance and is subject to recall at any time.

REF: LD2285

UNLESS OTHERWISE SPECIFIED DIMENSIONS ARE IN INCHES AND INCLUDE CHEMICALLY APPLIED OR PLATED FINISHES

TOLERANCES ON

| | |
|-------------|-----------|
| DECIMALS | FRACTIONS |
| .X ± .05 | ± 1/64 |
| .XX ± .01 | ANGLES |
| .XXX ± .005 | ± 0°-30' |

MATERIAL .063 ALUMINUM 5052-H32

FINISH S404-YEL. IRIDITE

- UNLESS OTHERWISE SPECIFIED:
1. USE MATERIAL THICKNESS FOR MAXIMUM RADIUS ON ALL BENDS.
 2. ALL ANGULAR BENDS 90 DEGREES.
 3. REMOVE ALL BURRS & SHARP EDGES
 4. MOUNT INSERTS AFTER FINISHING.

MS 5309

Ø

A