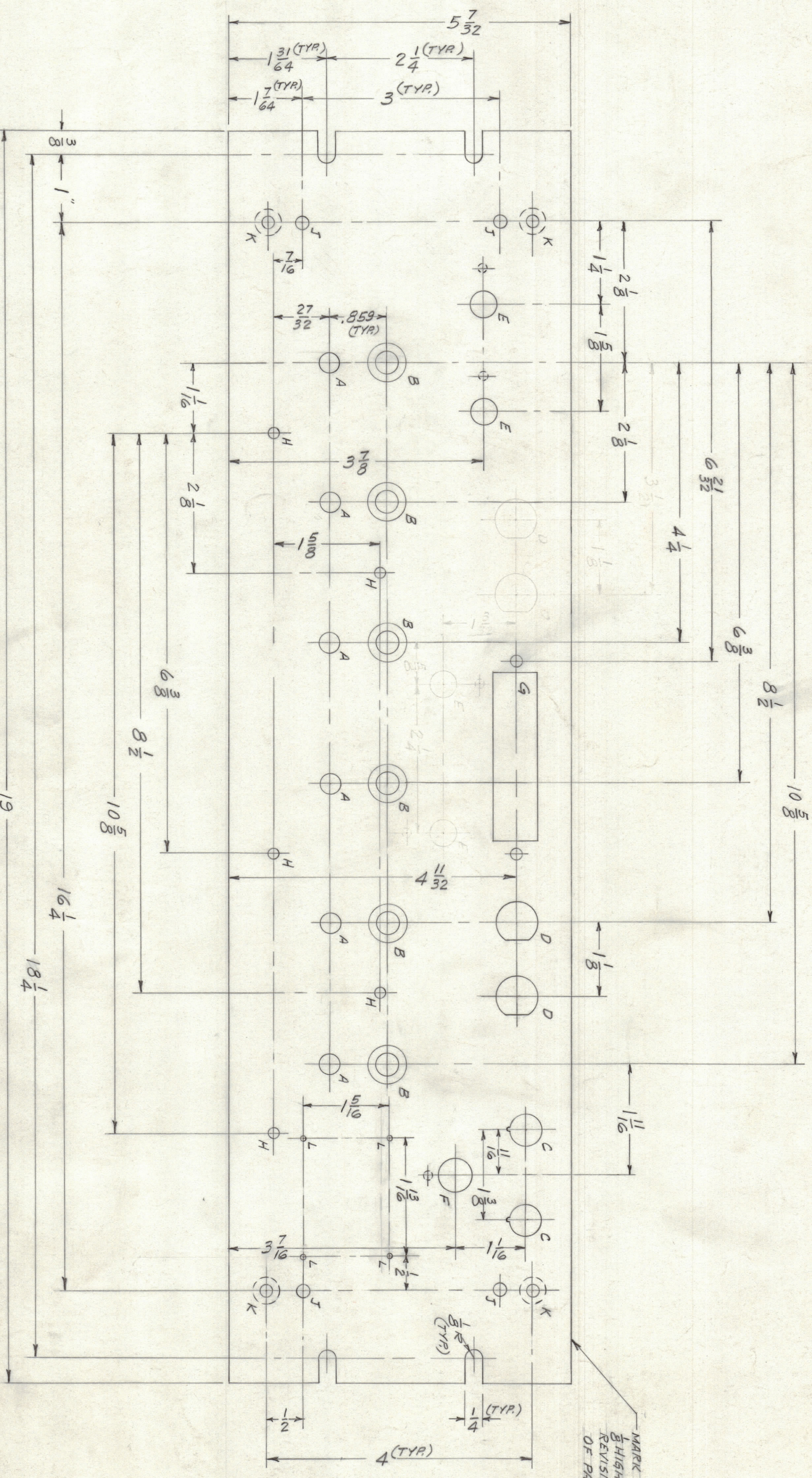


REVISIONS		DATE	M.N.	DRAFT	CHKD	APPD	
ZONE	LTR	DESCRIPTION	DATE <td>M.N. <td>DRAFT <td>CHKD</td> <td>APPD</td> </td></td>	M.N. <td>DRAFT <td>CHKD</td> <td>APPD</td> </td>	DRAFT <td>CHKD</td> <td>APPD</td>	CHKD	APPD
	0	ORIGINAL RELEASE FOR PROJ. 11-8-67	11-8-67	DAC	MS	MS	MS
	A	DELETED 2D & 2E HOLES	12-1-68	18663	449		

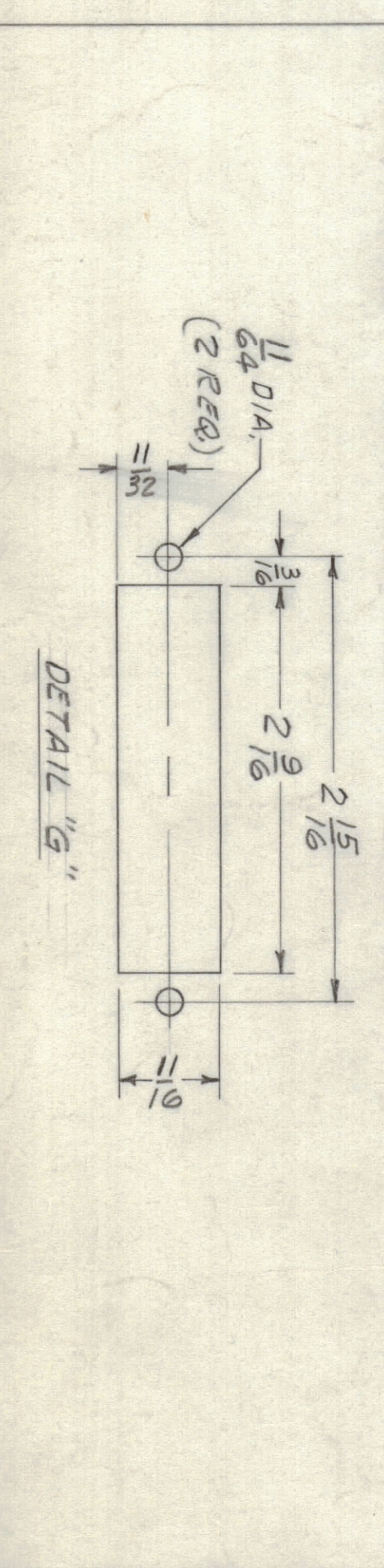
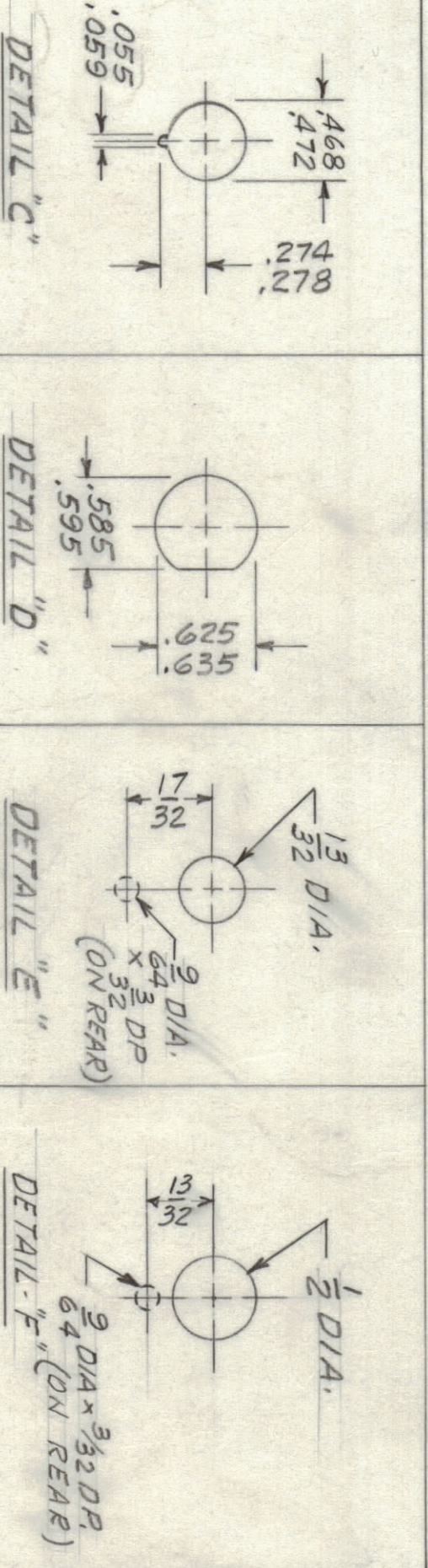


MARK TMC PT/NO (MS5260)
HIGH GOTHIC W/LATEST
REVISION LETTER (ON REAR
OF PANEL)

FINISH NOTES:
1. S404 - IRIDITE 14-2 AL-COAT } FRONT AND
2. S114 - ZINC CHROMATE PRIMER } EDGES ONLY
3. S115 - SMOOTH GRAY ENAMEL }
OR
PRIME AND PAINT PER CUSTOMER'S SPECIFICATIONS.

MACHINING:
1. MILL ALL EDGES.
2. HOLES MUST BE DRILLED, UNLESS OTHERWISE SPECIFIED.
3. LATERAL BOW OF PANEL MUST BE KEPT TO .031 TOLERANCE.
4. PANEL MUST BE FREE OF ALL MACHINING MARKS, GORRES
AND SCRATCHES. IF NECESSARY, SAND FRONT OF PANEL
WITH NO. 120 GRIT SANDPAPER.

HOLE	DESCRIPTION	REQ.
A	5/16 DIA	6
B	1/32 DIA 82° CHAMK TO 1/32 DIA	6
C	SEE DETAIL	2
D	SEE DETAIL	2
E	SEE DETAIL	2
F	SEE DETAIL	1
G	SEE DETAIL	1
H	1/64 DIA	5
J	13/64 DIA	4
K	1.96 DIA, 82° CHAMK TO .390 DIA (ON REAR)	4
L	.076 DIA	4



QTY / UNIT	MODEL USED ON	ASSY. NO.
1	CHG-41	
APPLICATION		
	CODE	5401-451

TOLERANCES ON	FRACTIONS	DECIMALS
ANGLES	± 1/64	XX ± .01
LENGTHS	± 0° 30'	XXX ± .005

DATE	DATE	DATE
11-9-67	11-9-67	11-8-67

QTY	REQ. ITEM	PART NO.	DESCRIPTION	SYMBOL
1	CHG-41		THE TECHNICAL MATERIEL CORP. MAMARONECK, NEW YORK	
1			PANEL, FRONT	

SIZE CODE IDENT. NO. DWG. NO. MS 5260
SCALE 1:1
SHEET 1 OF 1