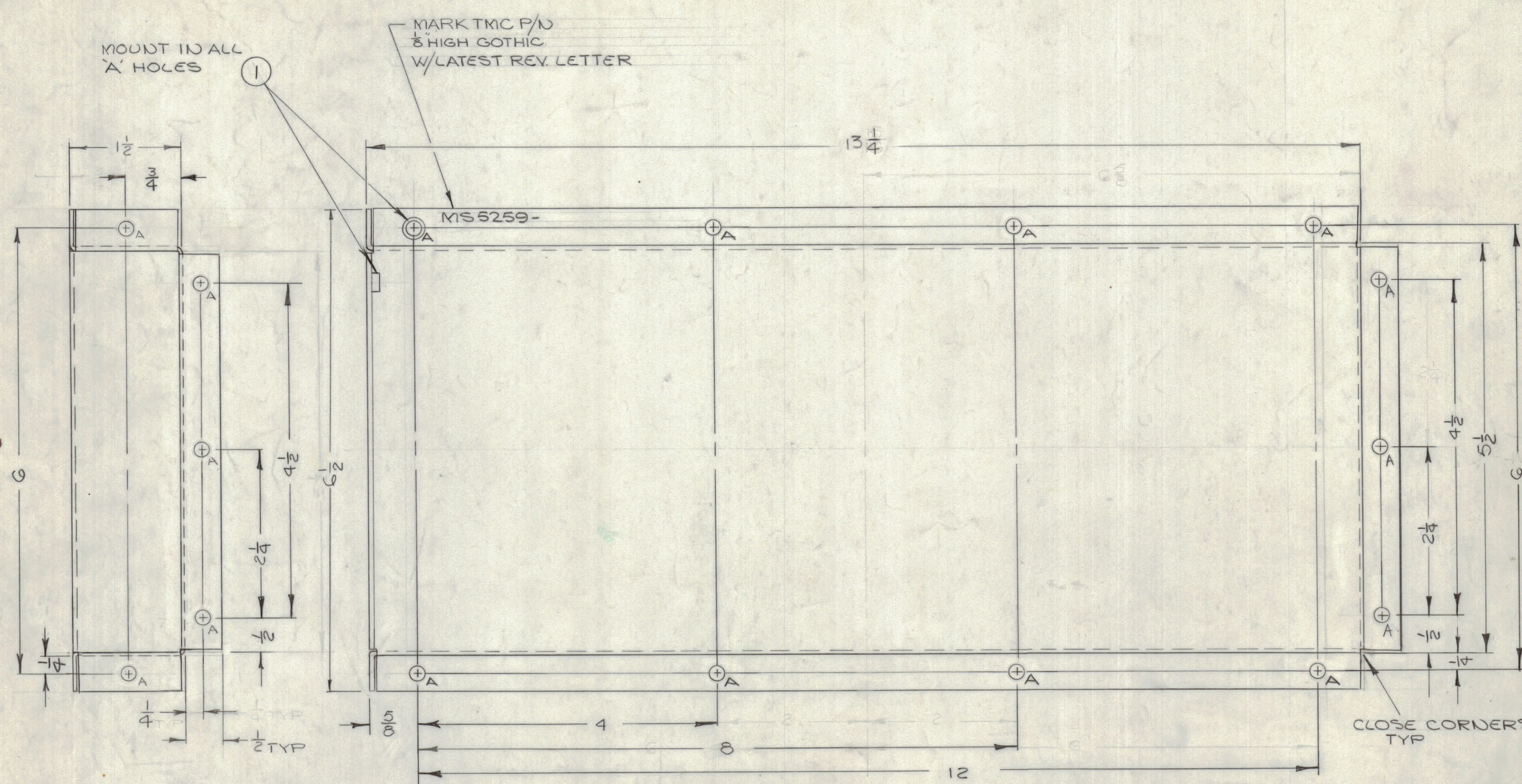


REVISIONS						
ZONE	LTR	DESCRIPTION	DATE	E.M.N.NO	DRAFT	CHKD APPD
	X	EXP RELEASE	10-11-67			
	Ø	ORIGINAL RELEASE FOR PRODUCTION	4-2-68	Ø		



HOLES	DESCR	REQ
A	.191-.194 DIA	16

A .191-.194 DIA - 16 REQ

QTY. REQ.	ITEM	PART NO.	DESCRIPTION	SYMBOL
16	1	NT129-632-4	OUT. PLAIN SPLINE	A

FINAL APPROVAL		DATE
MECH. DES.		DATE
ELECT. DES.		DATE
CHECKED		DATE
DRAWN		DATE

BUDETTI LIST OF MATERIAL SK 3290-MS 2007

THE TECHNICAL MATERIEL CORP.
MAMARONECK, NEW YORK

DUCT, AIR

1	BCTIOKA	
QTY / UNIT	MODEL USED ON	ASS'Y NO.
APPLICATION		
	CODE	S 901-451

UNLESS OTHERWISE SPECIFIED DIMENSIONS ARE IN INCHES AND INCLUDE CHEMICALLY APPLIED OR PLATED FINISHES

TOLERANCES ON

DECIMALS	FRACTIONS
.X ± .05	± 1/64
.XX ± .01	ANGLES
.XXX ± .005	± 0° -30'

MATERIAL .064 ALUM
5052-H 32

FINISH 5404
YEL. IRIDITE

SIZE	CODE IDENT. NO.	DWG NO.	ISSUE
C	82679	MS 5259	Ø
SCALE 1:1		SHEET 1 OF 1	

- UNLESS OTHERWISE SPECIFIED:
- USE MATERIAL THICKNESS FOR MAXIMUM RADIUS ON ALL BENDS
 - ALL ANGULAR BENDS 90 DEGREES
 - REMOVE ALL BURRS AND SHARP EDGES
 - MOUNT INSERTS AFTER FINISHING

NOTICE TO PERSONS RECEIVING THIS DRAWING

THE TECHNICAL MATERIEL CORPORATION claims proprietary right in the material disclosed hereon. This drawing is issued in confidence for engineering information only and may not be reproduced or used to manufacture anything shown hereon without permission from THE TECHNICAL MATERIEL CORPORATION to the user. This drawing is loaned for mutual assistance and is subject to recall at any time.