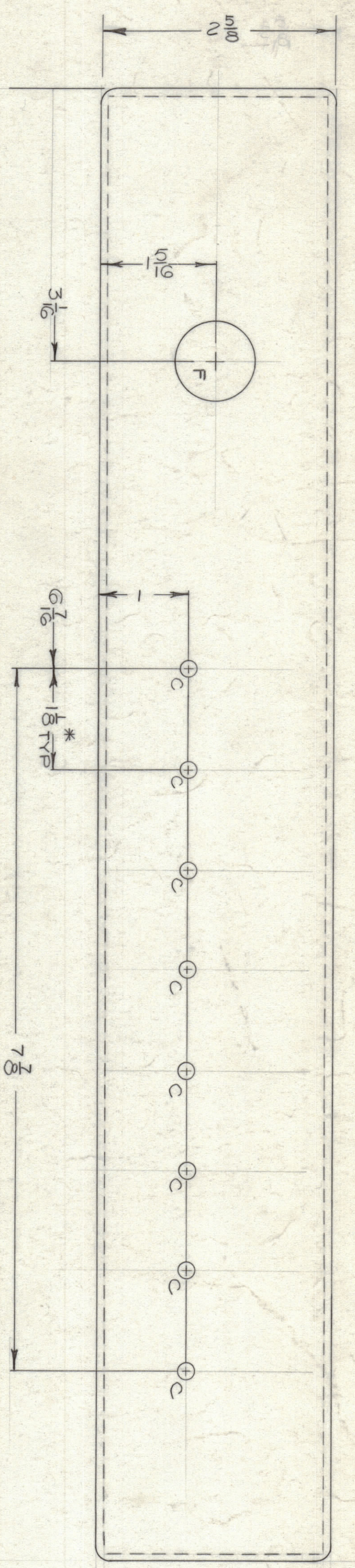
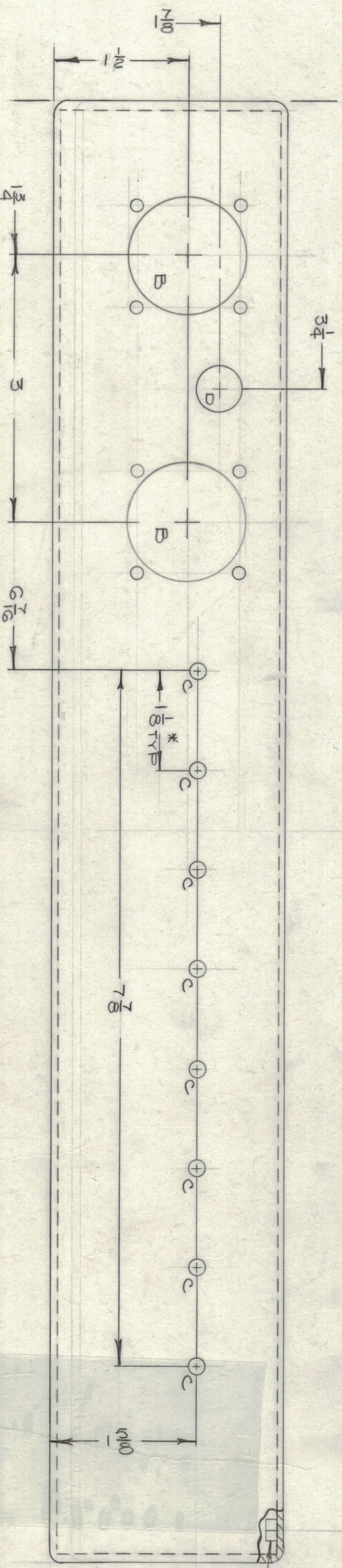
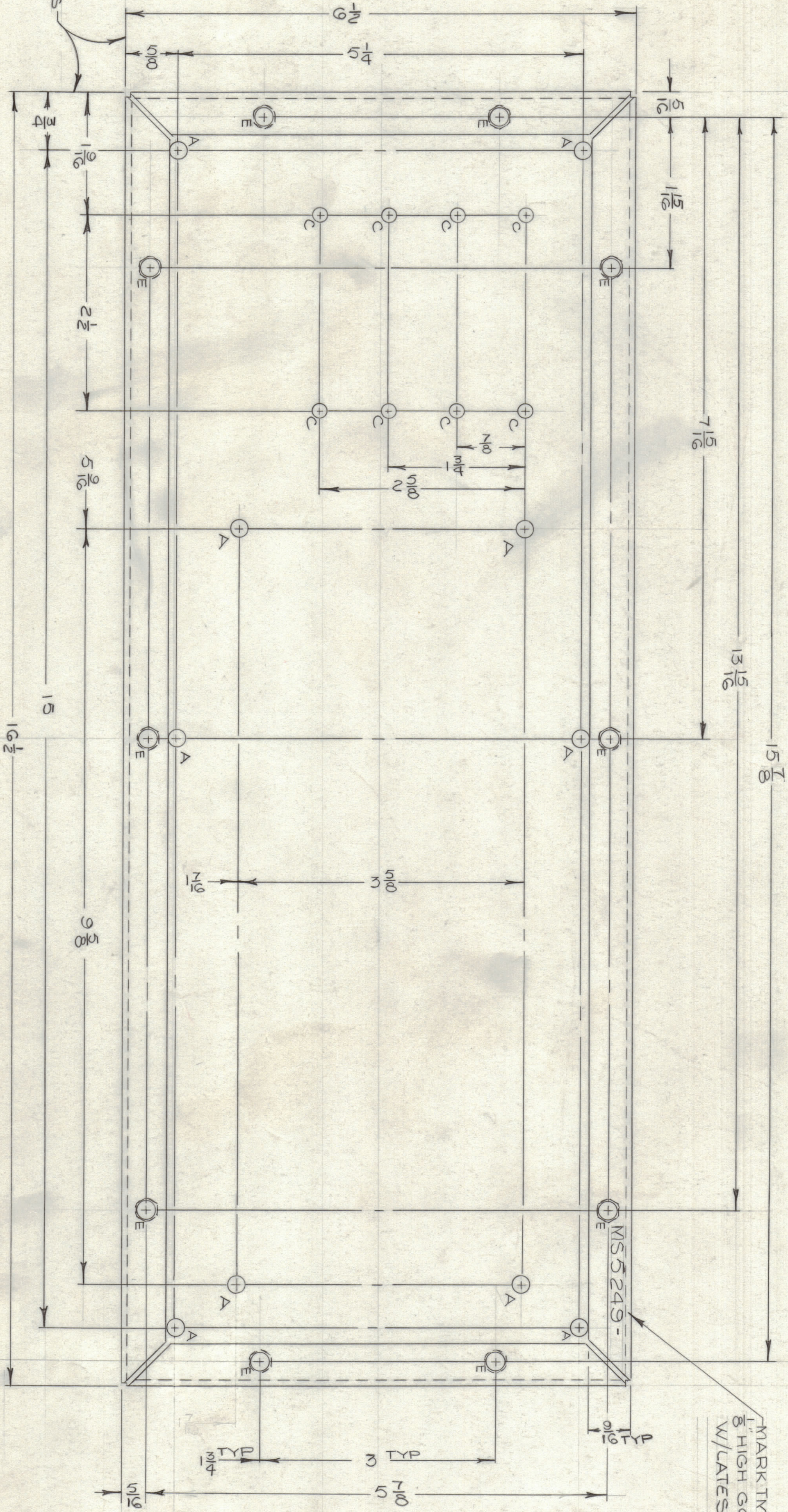
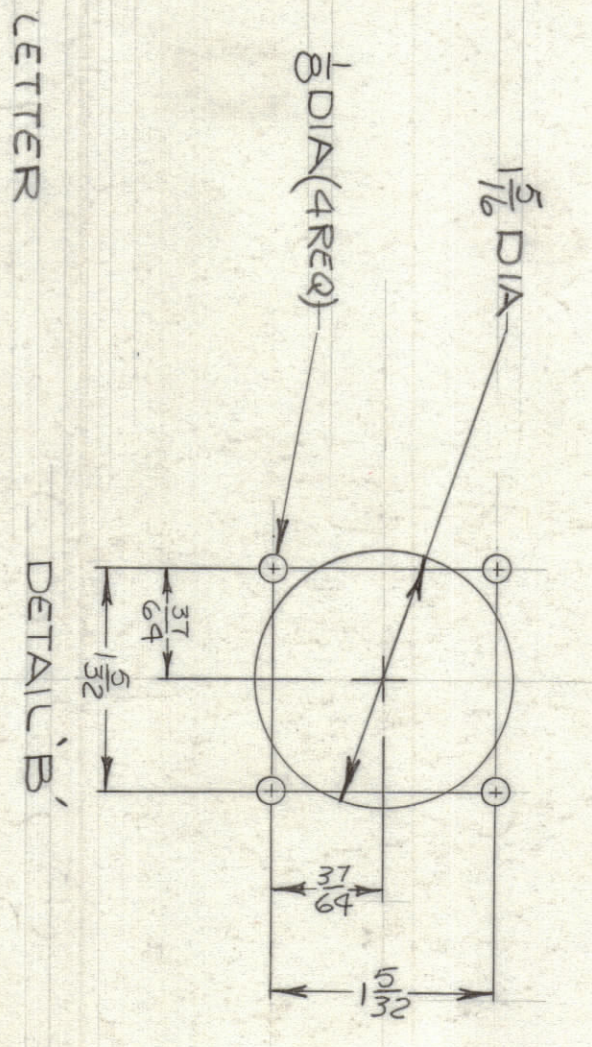


REVISIONS		DATE	M.N.O.	DRAFT	CHKD.	APPD.
ZONE	LTR	DESCRIPTION	DATE	M.N.O.	DRAFT	CHKD.
	X	EXP RELEASE	11-2-67			
		ORIGINAL RELEASE FOR PRODUCTION	2-7-67			



MARK TMC P/U  
1/8 HIGH GOTHIC  
W/LATEST REVISION LETTER



1 MODIFIED ALL 'E' HOLES  
AFTER FINISHING

REF. LD 2261

\* NOTE: TOLERANCES NOT ACCUMULATIVE

HOLE	DESCRIPTION	REQ.
A	1 3/64 DIA.	10
B	SEE DETAIL	2
C	1 1/64 DIA.	24
D	1/2 DIA.	1
E	2 13/16 DIA.	10
F	CSHAK 2 1/8 DIA.	1

UNLESS OTHERWISE SPECIFIED  
DIMENSIONS ARE IN INCHES  
AND INCLUDE CHEMICALLY APPLIED  
OR PLATED FINISHES

TOLERANCES ON

DECIMALS	FRACTIONS
.X ± .05	± 1/64
.XX ± .01	ANGLES
.XXX ± .005	± 0°.30

QTY / UNIT	MODEL USED ON	ASSY. NO.
1	GPT-40 KEL	
	APPLICATION	
	CODE	S401-451

DATE	DATE	DATE
2-17-68	11-2-67	11-2-67

QTY	DESCRIPTION	SYMBOL
10	SM107-2-4	E

LIST OF MATERIAL

THE TECHNICAL MATERIEL CORP.  
MAMARONECK, NEW YORK

BOX, INTERCONNECT FILTER

SIZE CODE IDENTIFYING NO. D 82679 MS 5249

SCALE 1:1 SHEET OF

NOTICE TO PERSONS RECEIVING THIS DRAWING  
THE TECHNICAL MATERIEL CORPORATION claims proprietary right in the material disclosed herein.  
This information is furnished for engineering information only. It is not to be reproduced or used  
to manufacture anything without the express written permission of THE TECHNICAL MATERIEL CORPORATION.  
The drawing is based on mutual assistance and is subject to recall at any time.