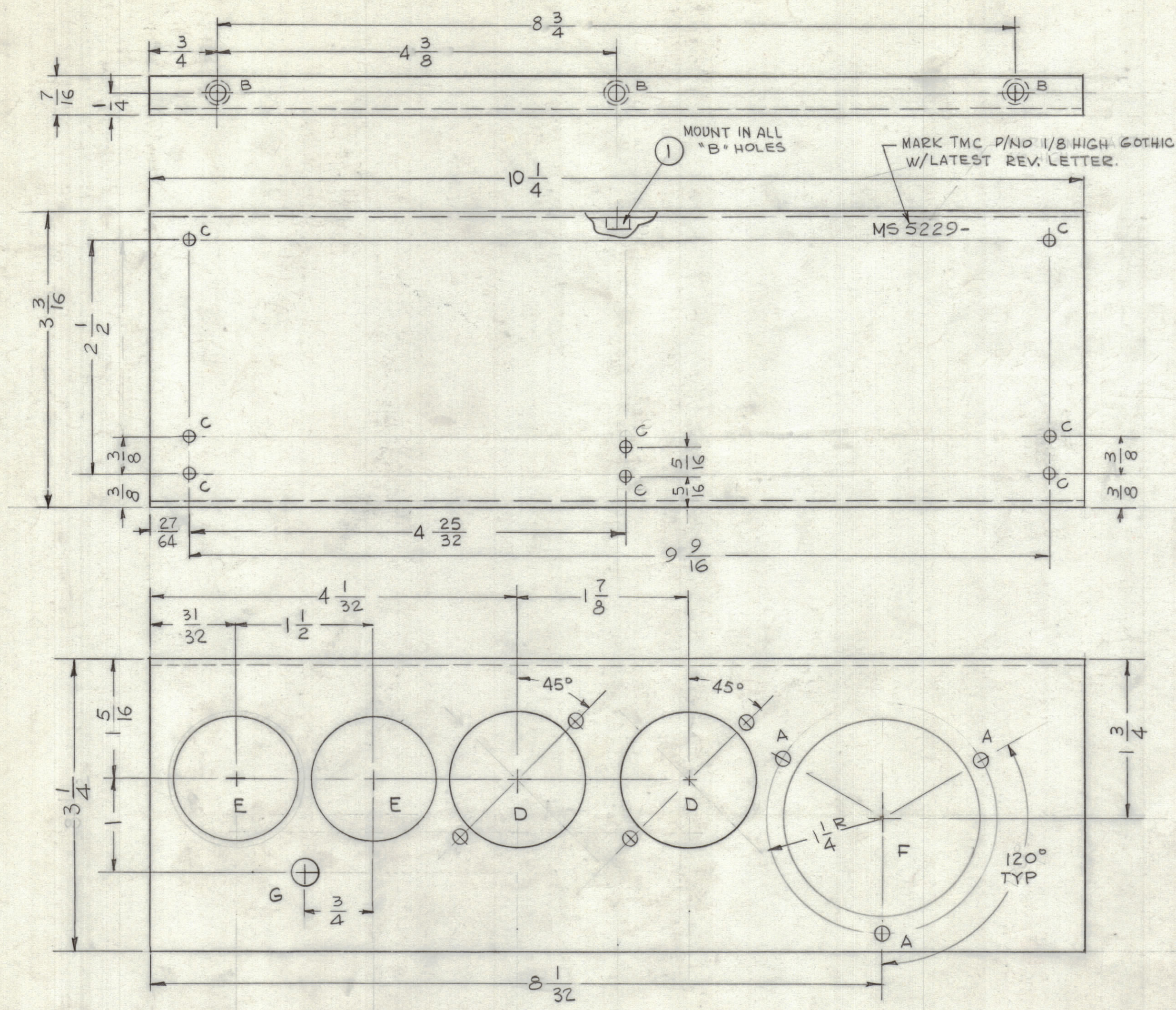
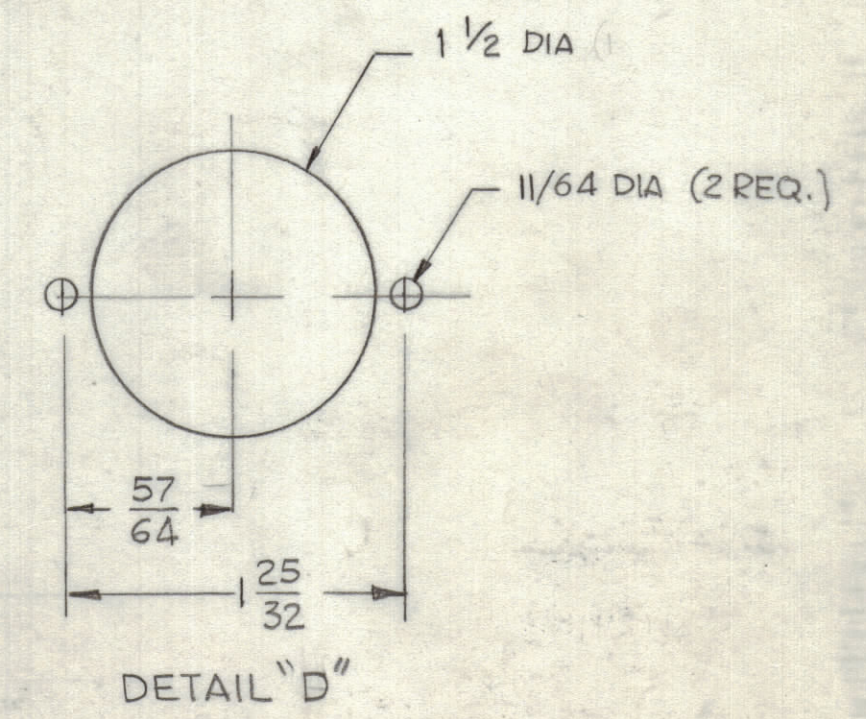


REVISIONS						
ZONE	LTR	DESCRIPTION	DATE	E.M.N.NO	DRAFT	CHKD APPD
	X3	REDRAWN W/NO REV.	11-9-67		G.D.L.	SG J10
	Ø	ORIG. RELEASE	12-4-68			



HOLE	DESCRIPTION	REQ
A	11/64 DIA	3
B	.191 - .194 DIA	3
C	9/64 DIA	8
D	SEE DETAIL	2
E	1.5/16 DIA	2
F	2 1/8 DIA	1
G	5/16 DIA	1



UNLESS OTHERWISE SPECIFIED:

1. USE MATERIAL THICKNESS FOR MAXIMUM RADIUS ON ALL BENDS
2. ALL ANGULAR BENDS 90 DEGREES
3. REMOVE ALL BURRS AND SHARP EDGES
4. MOUNT INSERTS AFTER FINISHING

QTY / UNIT	MODEL USED ON	ASS'Y NO.
1	RTIH-3	
APPLICATION		
CODE	S401-451	
A		

NOTICE TO PERSONS RECEIVING THIS DRAWING
 THE TECHNICAL MATERIEL CORPORATION claims proprietary right in the material disclosed hereon. This drawing is issued in confidence for engineering information only and may not be reproduced or used to manufacture anything shown hereon without permission from THE TECHNICAL MATERIEL CORPORATION to the user. This drawing is loaned for mutual assistance and is subject to recall at any time.

UNLESS OTHERWISE SPECIFIED DIMENSIONS ARE IN INCHES AND INCLUDE CHEMICALLY APPLIED OR PLATED FINISHES

TOLERANCES ON

DECIMALS	FRACTIONS
.X ± .05	± 1/64
.XX ± .01	ANGLES
.XXX ± .005	± 0° -30'

MATERIAL .062 THK ALUMINUM 5052-H32

FINISH S404 YEL. IRIDITE

QTY. REQ.	ITEM	PART NO.	DESCRIPTION	SYMBOL
3	1	NT129-632-4	NUT, PLAIN SPLINE	B
F. EATON LIST OF MATERIAL				
THE TECHNICAL MATERIEL CORP. MAMARONECK, NEW YORK				
PLATE, END PC. CARD BIN				
SIZE	CODE	IDENT. NO.	DWG NO.	ISSUE
C	82679	MS 5229		Ø
SCALE 1:1				SHEET OF