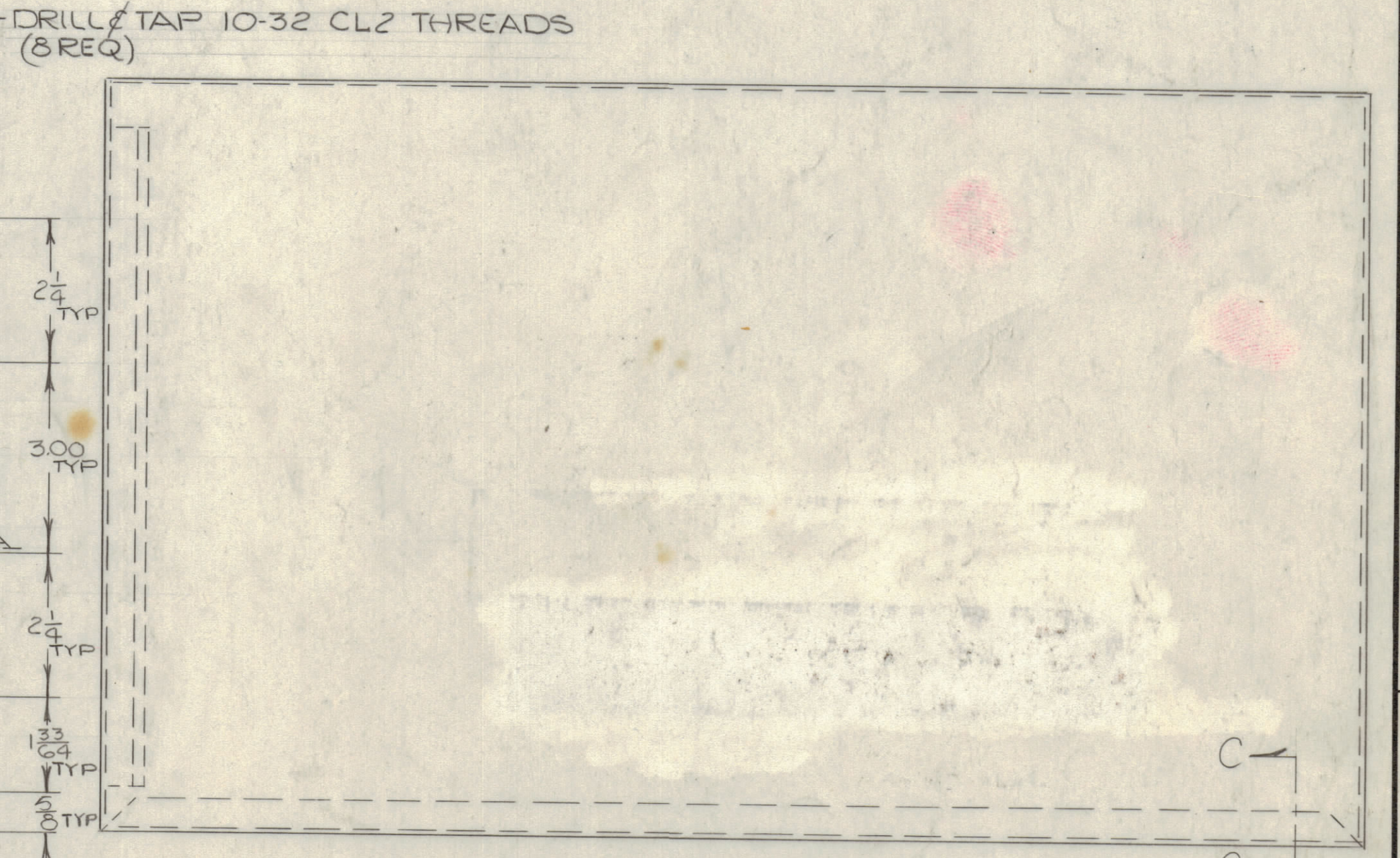
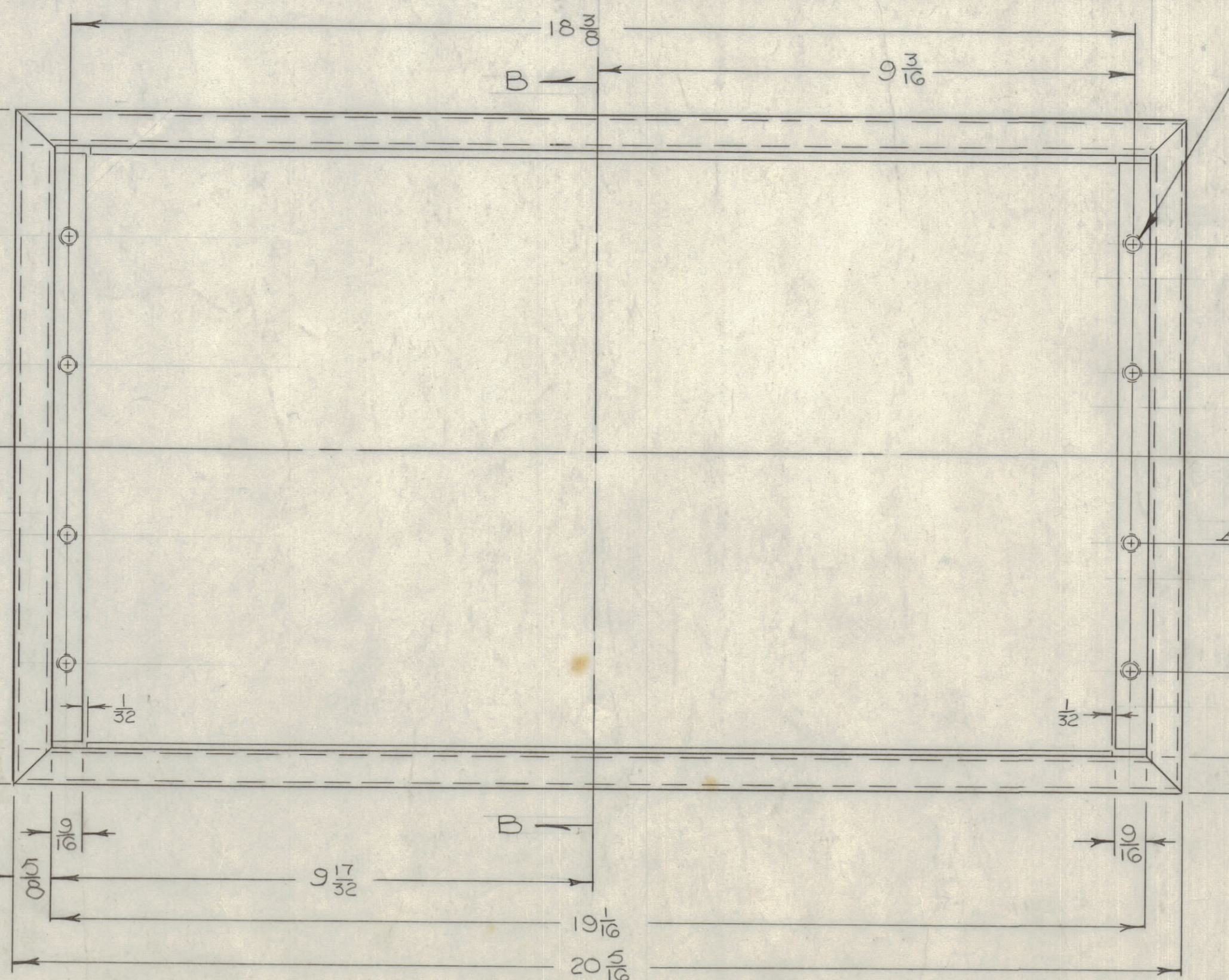
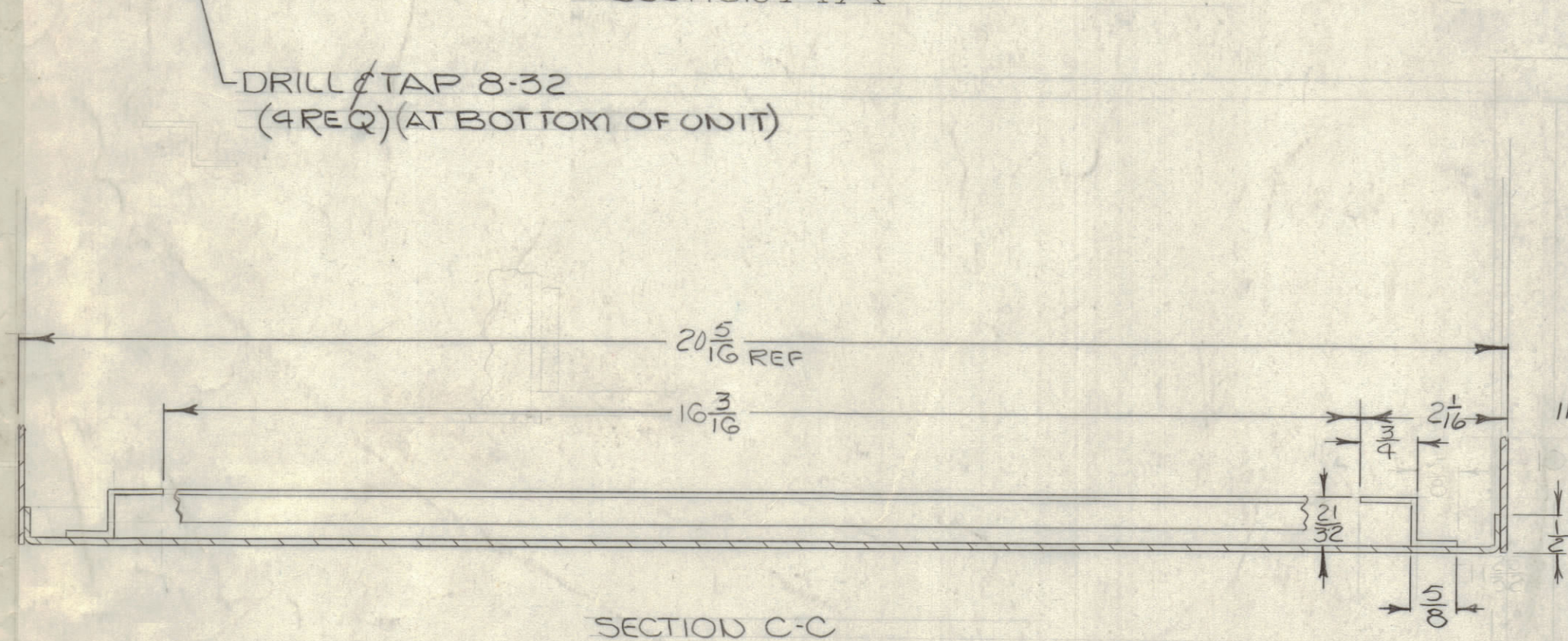
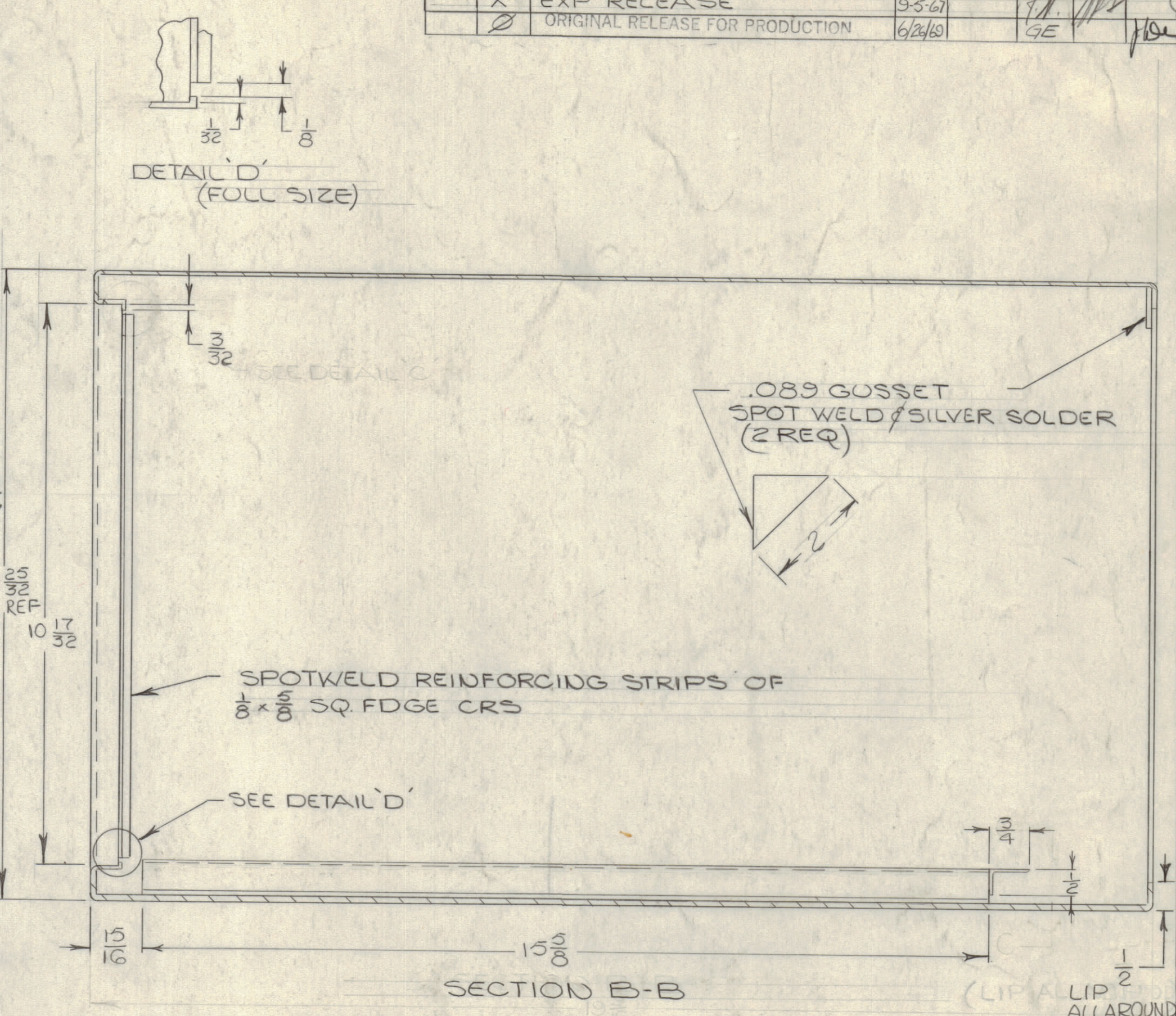
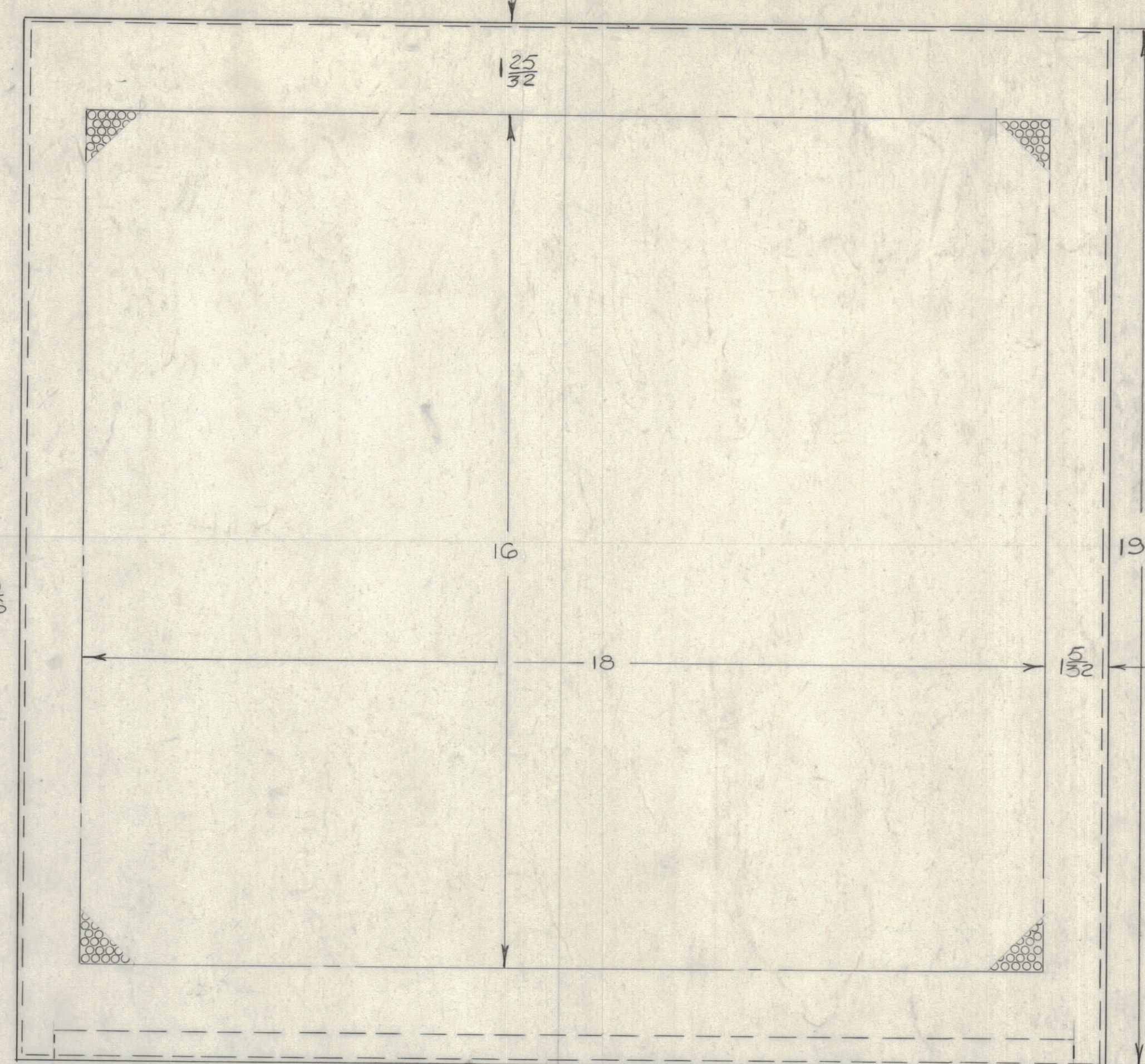
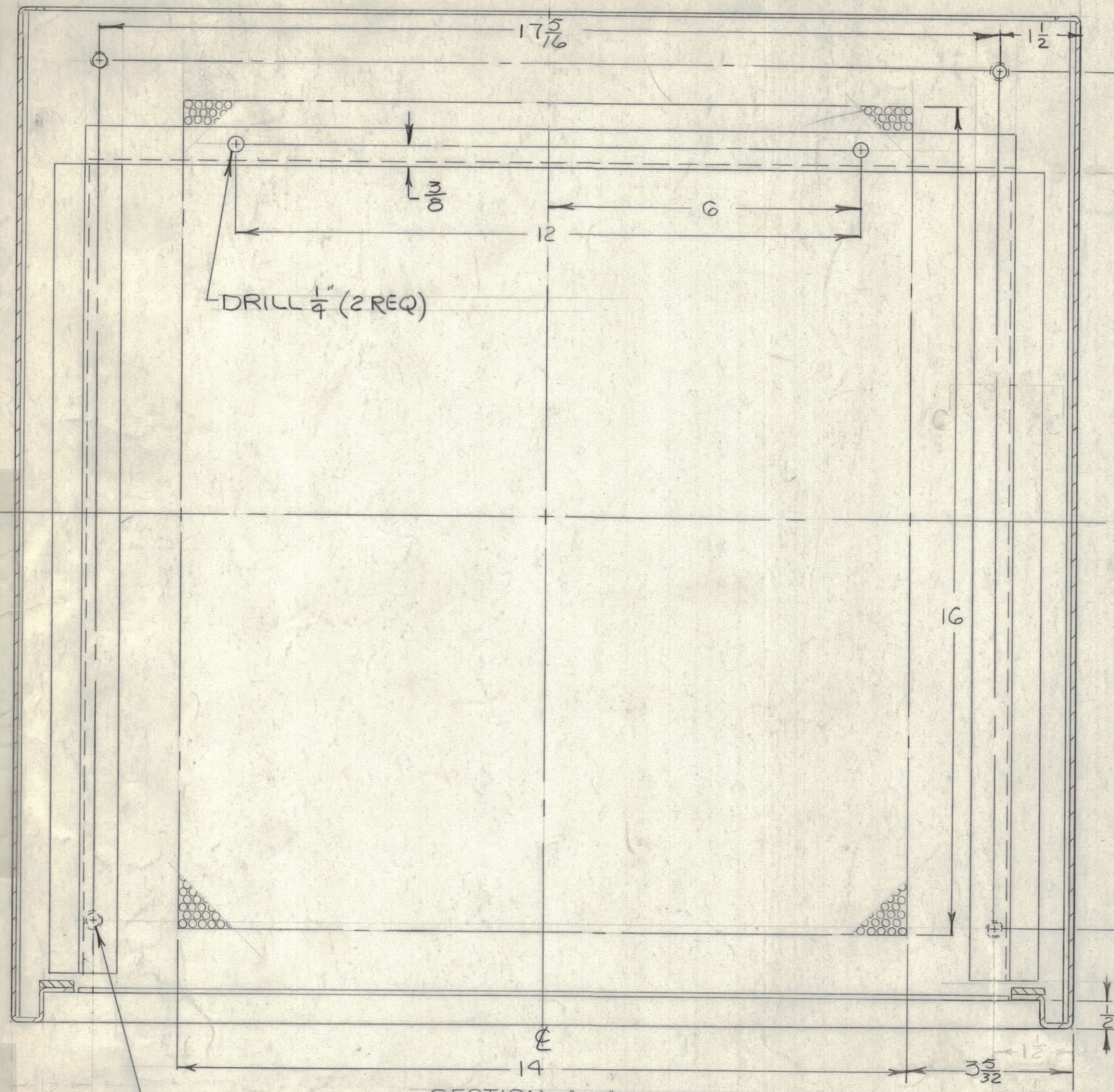


		REVISIONS					
ZONE	LTR	DESCRIPTION	DATE	E.M.N. NO	DRAFT	CHKD	APPD
X		EXP RELEASE	9-5-67				
		ORIGINAL RELEASE FOR PRODUCTION	6/24/68				



MATERIAL:
STEEL MILD COLD ROLLED .047 (18 GA)
METAL TO BE FREE OF ALL SURFACE IMPERFECTIONS

FINISH:
S-371 DEGREASING FOR STEEL } OR PRIME / PAINT AS PER CUSTOMERS SPECS.
S-114 ZINC CHROMATE PRIMER }
S-320 BLUE GRAY TEXTURED VINYL }
MANUFACTURING PROCESS

FRONT OPENING SHOULD BE WITHIN ± 1/64
SQUARE OF CABINET SHOULD BE WITHIN 0.5°
AS MANY SPOTWELDS AS PRACTICAL FOR
MAXIMUM DEPENDABILITY & STRENGTH
PERFORATIONS, 5/16 DIA ON 1/8 CENTERS STAGGERED
WELD & GRIND SMOOTH ALL CORNERS

QTY / UNIT	MODEL USED ON	ASS'Y NO.
1	TTR 20 ()	CAB-9A
1	TTR 10 ()	CAB-9A
APPLICATION		
CODE	S401-451	
A		

QTY. REQ.	ITEM	PART NO.	DESCRIPTION	SYMBOL
K. HOLT				
LIST OF MATERIAL				
THE TECHNICAL MATERIEL CORP. MAMARONECK, NEW YORK				
CABINET,				
TOLERANCES ON				
DECIMALS	FRACTIONS			
.X ± .05	± 1/64			
.XX ± .01	ANGLES			
.XXX ± .005	± 0°-30'			
MATERIAL		AS NOTED		
FINISH		AS NOTED		
UNLESS OTHERWISE SPECIFIED DIMENSIONS ARE IN INCHES AND INCLUDE CHEMICALLY APPLIED OR PLATED FINISHES				
FINAL APPROVAL		DATE 9-5-67		
MECH. DES.		DATE		
ELECT. DES.		DATE		
CHECKED		DATE		
DRAWN		DATE 9-5-67		
SIZE		CODE IDENT. NO. DWG. NO.		
D		82679 MS 5197		
SCALE		M/L		
		SHEET OF		

NOTICE TO PERSONS RECEIVING THIS DRAWING
THE TECHNICAL MATERIEL CORPORATION claims proprietary right in the material disclosed herein. This drawing is issued in confidence for engineering information only and may not be reproduced or used to manufacture anything shown hereon without permission from THE TECHNICAL MATERIEL CORPORATION to the user. This drawing is loaned for mutual assistance and is subject to recall at any time.

MS 5197