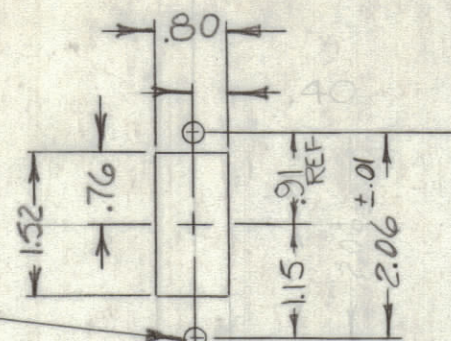


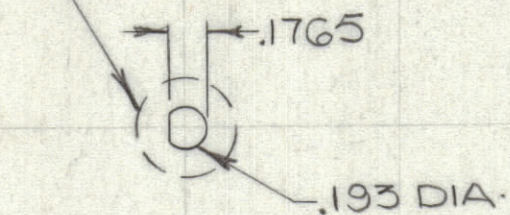
REVISIONS						
ZONE	LTR	DESCRIPTION	DATE	E.M.N.NO	DRAFT	CHKD APPD
	X	EXP RELEASE	10-16-67			
	Ø	ORIGINAL RELEASE FOR PRODUCTION	4-1-68	Ø		

1/64 DIA (2 REQ)

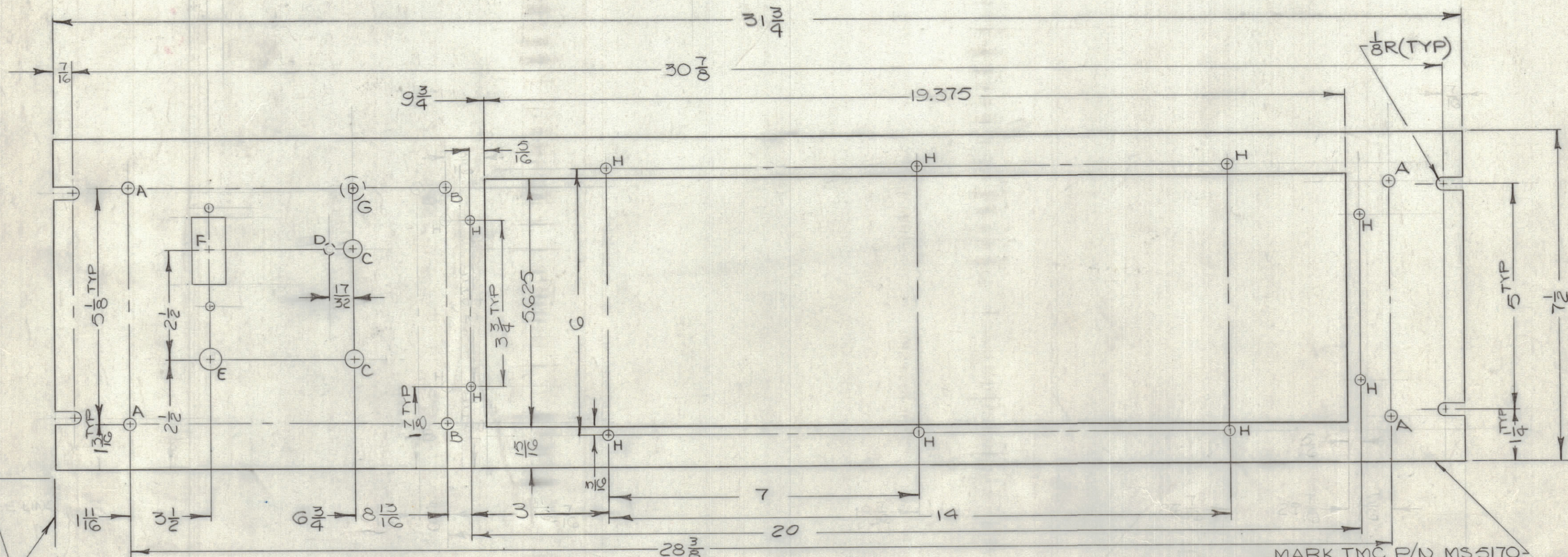


DETAIL 'F'

1/2" DIA x 3/32 DEEP (BORE FROM REAR)



DETAIL 'G'



FRONT VIEW

MARK TMC P/N MS 5170
1/8 HIGH GOTHIC W/LATEST REV. LETTER
(ON REAR)

LOCATING BASE LINES

MACHINING:

- MILL ALL EDGES.
- HOLES MUST BE DRILLED, UNLESS OTHERWISE SPECIFIED.
- LATERAL BOW OF PANEL MUST BE KEPT TO .031 TOLERANCE.
- PANEL MUST BE FREE OF ALL MACHINING MARKS, GOUGES AND SCRATCHES. IF NECESSARY, SAND FRONT OF PANEL WITH NO. 120 GRIT SANDPAPER.

FINISH NOTES:

- S404 - IRIDITE 14-2 AL-COAT
- S114 - ZINC CHROMATE PRIMER } FRONT AND
- S115 - SMOOTH GRAY ENAMEL } EDGES ONLY

HOLE	DIA	REQ
A	15/64 DIA	4
B	13/64 DIA	2
C	3/8 DIA	2
D	1/8 x 1/16 DP. FROM REAR	1
E	15/32	1
F	SEE DETAIL	1
G	SEE DETAIL	1
H	1/64 DIA	10

REF. LD 2246-

QTY. REQ.	ITEM	PART NO.	DESCRIPTION	SYMBOL
	F. BUDETTI LIST OF MATERIAL SK 3290-MS 2003			
FINAL APPROVAL		DATE	THE TECHNICAL MATERIEL CORP. MAMARONECK, NEW YORK	
MECH. DES.		DATE	PANEL, FRONT (LFE)	
ELECT. DES.		DATE		
CHECKED		DATE		
DRAWN		DATE		
MATERIAL		SIZE	CODE IDENT. NO.	DWG NO.
FINISH		SCALE		SHEET OF

QTY / UNIT	MODEL USED ON	ASS'Y NO.
	BCTIOKA	
APPLICATION		
CODE	S401-451	
NOTICE TO PERSONS RECEIVING THIS DRAWING		
THE TECHNICAL MATERIEL CORPORATION claims proprietary right in the material disclosed hereon. This drawing is issued in confidence for engineering information only and may not be reproduced or used to manufacture anything shown hereon without permission from THE TECHNICAL MATERIEL CORPORATION to the user. This drawing is loaned for mutual assistance and is subject to recall at any time.		

MS 5170