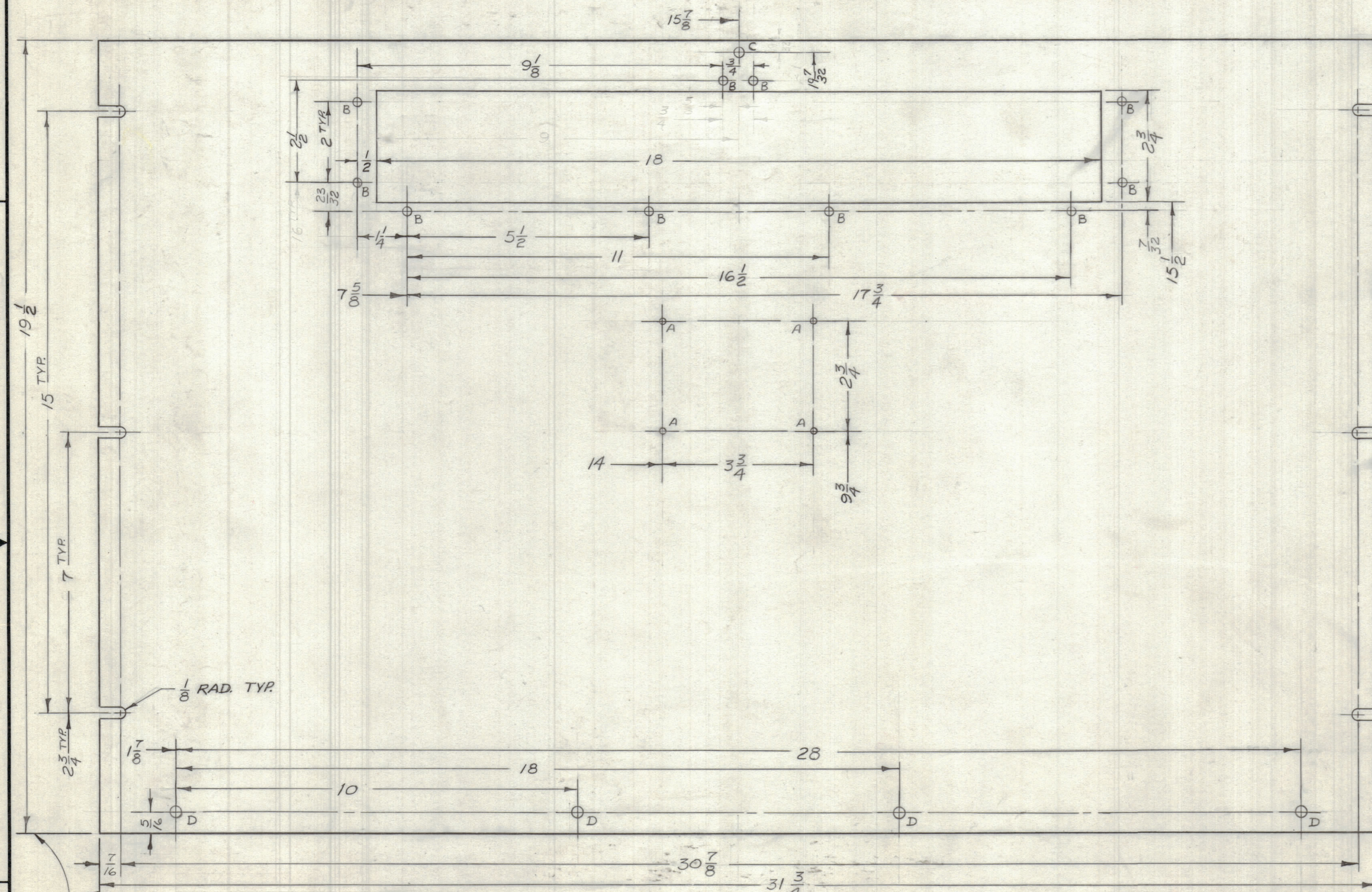


REVISIONS							
ZONE	LTR	DESCRIPTION	DATE	E.M.N.O	DRAFT	CHKD	APPD
	X3	REDRAWN W/O CHANGE	11/22/61		End		DR
	Ø	ORIGINAL RELEASE FOR PRODUCTION	4/2/68	Ø	h.c.		DR



HOLE	DESCRIPTION	REQ.
A	.078 DIA.	4
B	1/64 DIA.	10
C	13/64 DIA.	1
D	15/64 DIA.	4

MACHINING:

- MILL ALL EDGES.
- HOLES MUST BE DRILLED, UNLESS OTHERWISE SPECIFIED.
- LATERAL BOW OF PANEL MUST BE KEPT TO .031 TOLERANCE.
- PANEL MUST BE FREE OF ALL MACHINING MARKS, GOUGES AND SCRATCHES. IF NECESSARY, SAND FRONT OF PANEL WITH NO. 120 GRIT SANDPAPER.

LOCATING BASE LINE

FINISH NOTES:

- S404 - IRIDITE 14-2 AL-COAT.
- S114 - ZINC CHROMATE PRIMER FRONT AND
- S115 - SMOOTH GRAY ENAMEL EDGES ONLY

QTY / UNIT	MODEL USED ON	ASS'Y NO.
1	BCT-10 KA	
APPLICATION		
CODE	S401-451	

NOTICE TO PERSONS RECEIVING THIS DRAWING
 THE TECHNICAL MATERIEL CORPORATION claims proprietary right in the material disclosed hereon. This drawing is issued in confidence for engineering information only and may not be reproduced or used to manufacture anything shown hereon without permission from THE TECHNICAL MATERIEL CORPORATION to the user. This drawing is loaned for mutual assistance and is subject to recall at any time.

FRONT VIEW

UNLESS OTHERWISE SPECIFIED DIMENSIONS ARE IN-INCHES AND INCLUDE CHEMICALLY APPLIED OR PLATED FINISHES

TOLERANCES ON

DECIMALS	FRACTIONS
.X ± .05	± 1/64
.XX ± .01	ANGLES
.XXX ± .005	± 0° .30'

MATERIAL 1/8 ALUMINUM
2024-T3

FINISH SEE NOTES

QTY. REQ.	ITEM	PART NO.	DESCRIPTION	SYMBOL		
	F. BUDETTI		LIST OF MATERIAL SK 3290 - MS1007			
	FINAL APPROVAL	DATE	THE TECHNICAL MATERIEL CORP. MAMARONECK, NEW YORK			
	MECH. DES.	DATE				
	ELECT. DES.	DATE				
	CHECKED	DATE				
	DRAWN	DATE	PANEL, FRONT, (BOTTOM)			
			SIZE	CODE IDENT. NO.	DWG NO.	ISSUE
			C	82679	MS 5164	Ø
			SCALE		SHEET	OF

MARK TMC P/N (MS5164)
1/8 HIGH GOTHIC W/LATEST
REV. LETTER ON REAR.

MS 5164
Ø
B