

4

3

2

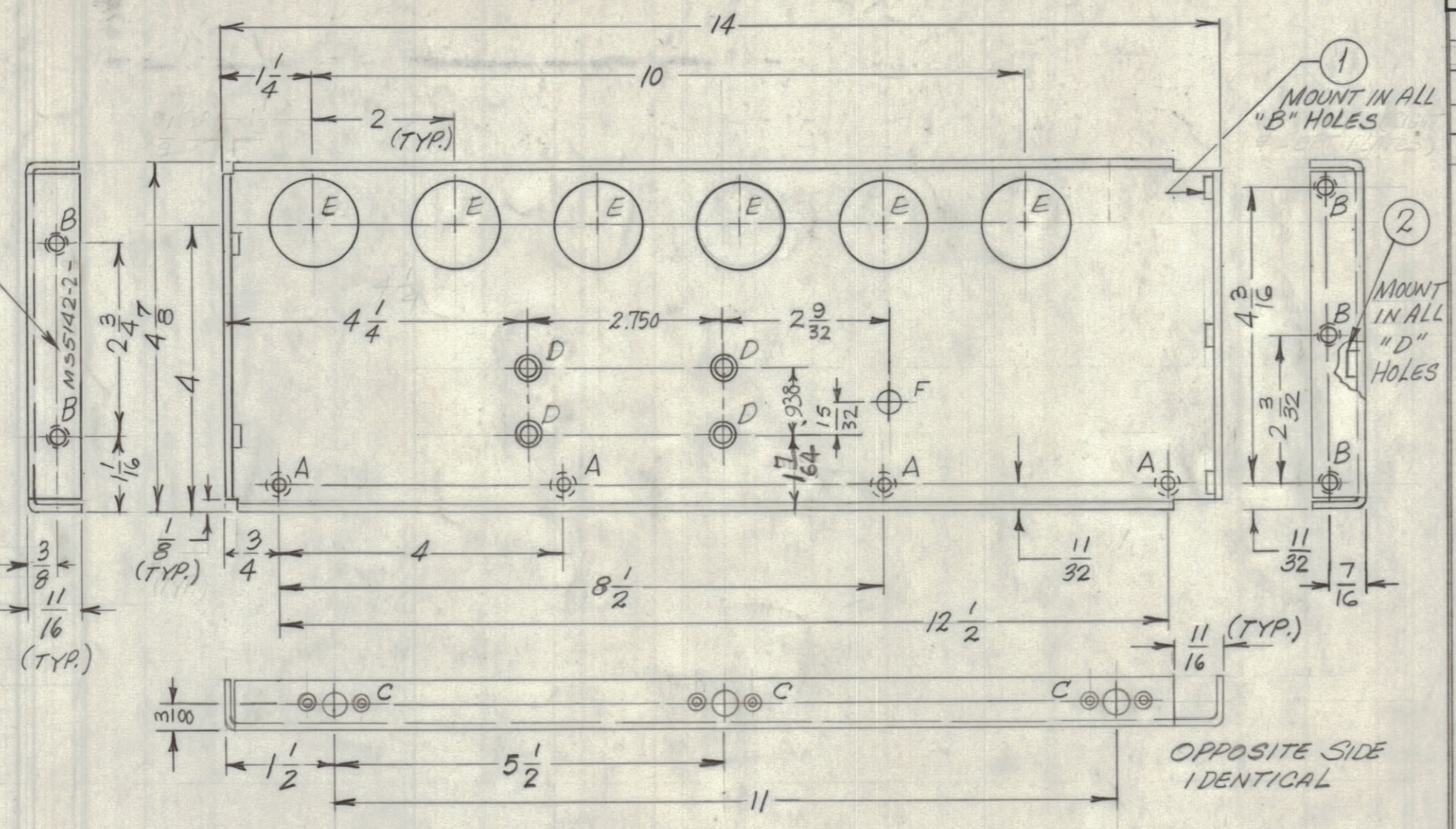
1

REVISIONS						
ZONE	LTR	DESCRIPTION	DATE	E.M.N. NO.	DRAFT	CHKD APPD
X		EXPERIMENTAL RELEASE	9-5-67			
X ₁		DELETE (3) 16-32 C'SINK	11-7-67			
X ₂		UPDATED & REV.	11-1-68			
Ø		ORIGINAL RELEASE FOR PRODUCTION	12-13-68			
A		17/64 WAS 13/32, RTTD-5A ADD	8/28/69	19563	KLH	JDA SDH

MARK TMC PT. NO. 1/8 HIGH GOTHIC W/LATEST REV. LETTER.

MS5142-2
LEFT SIDE PLATE

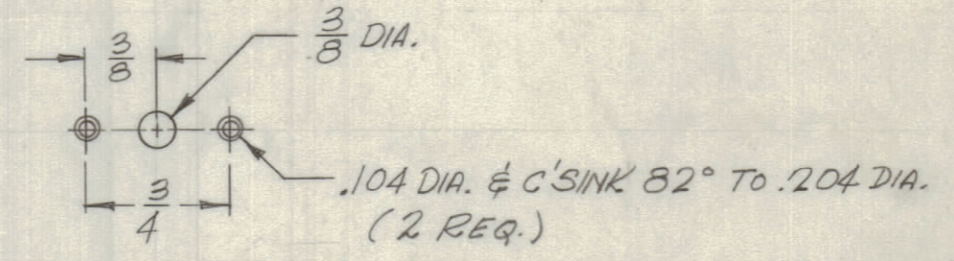
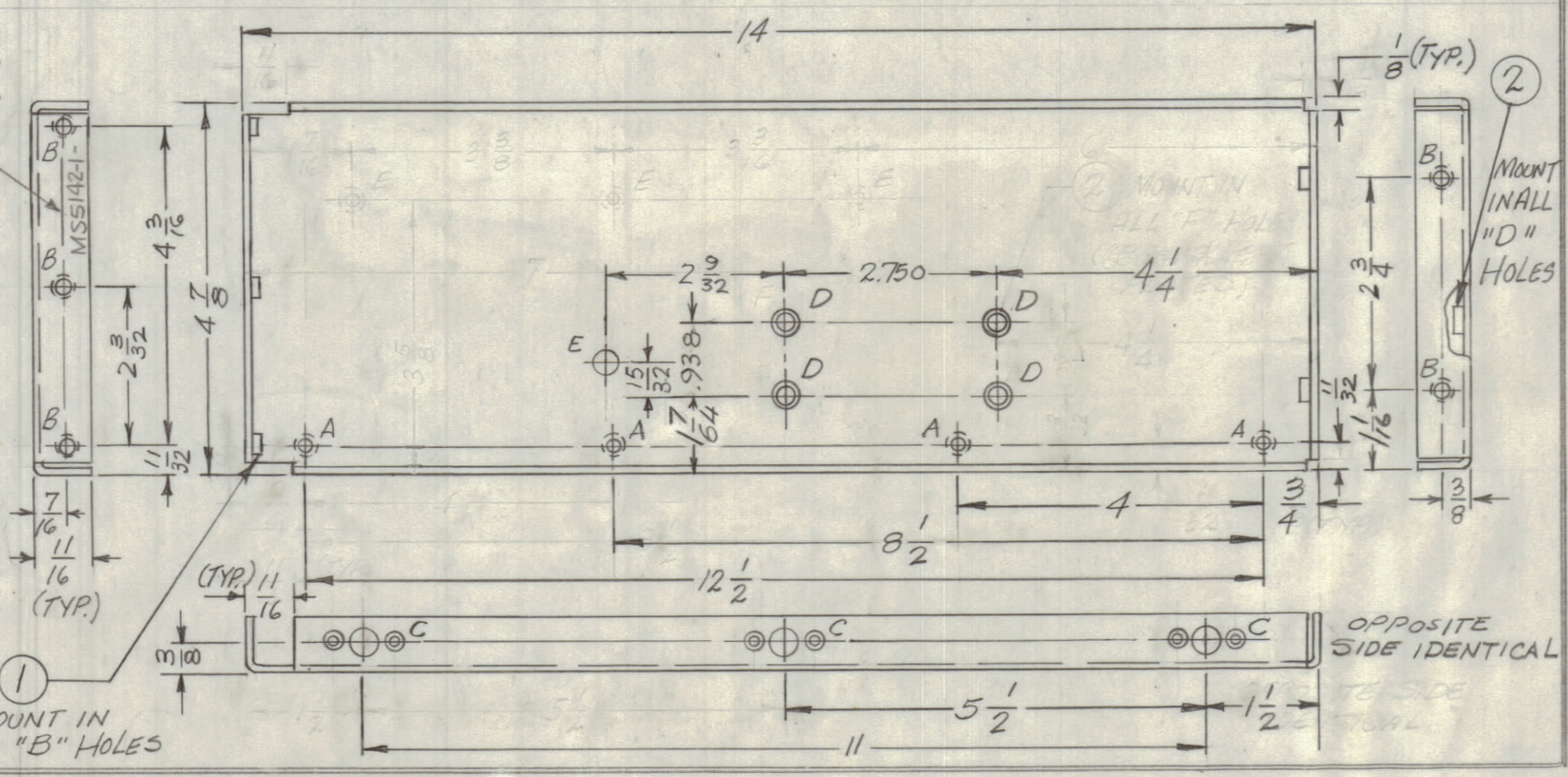
HOLE	DESCRIPTION	REQ.
A	.169 DIA. C'SINK 82° TO .337 DIA.	4
B	.221-.224 DIA.	5
C	SEE DETAIL	6
D	.250-.253 DIA.	4
E	1-1/4 DIA.	6
F	5/16 DIA.	1



MARK TMC PT. NO. 1/8 HIGH GOTHIC W/LATEST REV. LETTER

MS5142-1
RIGHT SIDE PLATE

HOLE	DESCRIPTION	REQ.
A	.169 DIA. C'SINK 82° TO .337 DIA.	4
B	.221-.224 DIA.	5
C	SEE DETAIL	6
D	.250-.253 DIA.	4
E	5/16 DIA.	1



DETAIL "C"
(12 REQ.)

HOLE	DESCRIPTION	REQ.
A	.169 DIA. C'SINK (ON OUTSIDE) 82° TO .337 DIA.	8
B	.221-.224 DIA.	10
C	SEE DETAIL	12
D	.250 DIA. (LEFT SIDE PLATE ONLY)	6
E	1-1/4 DIA. C'SINK (ON OUTSIDE) 82° TO .284 DIA.	3
F	.250-.253 DIA.	3

UNLESS OTHERWISE SPECIFIED:
 1. USE MATERIAL THICKNESS FOR MAXIMUM RADIUS ON ALL BENDS
 2. ALL ANGULAR BENDS 90 DEGREES
 3. REMOVE ALL BURRS AND SHARP EDGES
 4. MOUNT INSERTS AFTER FINISHING

1 EA.	RTTD-5A	
QTY / UNIT	RTMU 41,42	ASS'Y NO.
APPLICATION		
CODE	S401-451	

NOTICE TO PERSONS RECEIVING THIS DRAWING
 THE TECHNICAL MATERIEL CORPORATION claims proprietary right in the material disclosed herein. This drawing is issued in confidence for engineering information only and may not be reproduced or used to manufacture anything shown herein without permission from THE TECHNICAL MATERIEL CORPORATION to the user. This drawing is loaned for mutual assistance and is subject to recall at any time.

TOLERANCES ON	
DECIMALS	FRACTIONS
.X ± .05	± 1/64
.XX ± .01	ANGLES
.XXX ± .005	± 0°-30'

MATERIAL .081 THK. ALUMINUM 5052-H32
 FINISH S404-YEL. IRIDITE

8	2	NT129-1032-4	NUT, PLAIN, SPLINE	D
10	1	NT129-832-4	NUT, PLAIN, SPLINE	B
QTY. REQ.	ITEM	PART NO.	DESCRIPTION	SYMBOL

F. EATON
 FINAL APPROVAL
 MECH. DES. DATE 12/14/68
 ELECT. DES. DATE
 CHECKED DATE 9-6-67
 DRAWN H. AUSTIN DATE 9-5-67

LIST OF MATERIAL JK 3252-007-8
 THE TECHNICAL MATERIEL CORP.
 MAMARONECK, NEW YORK

PLATE, SIDE
 RIGHT & LEFT

SIZE	CODE IDENT. NO.	DWG. NO.	ISSUE
C	82679	MS5142-4	
SCALE	1:2		SHEET OF

4

3

2

1