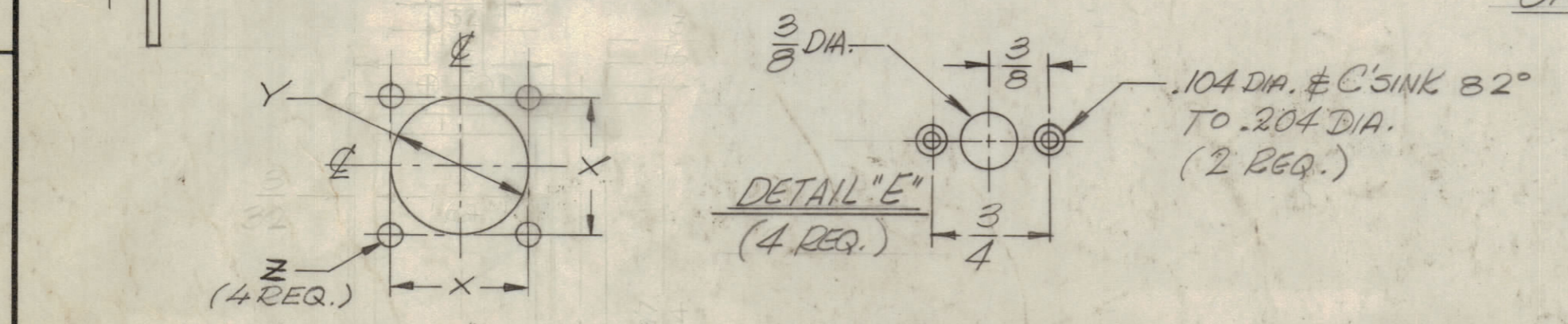
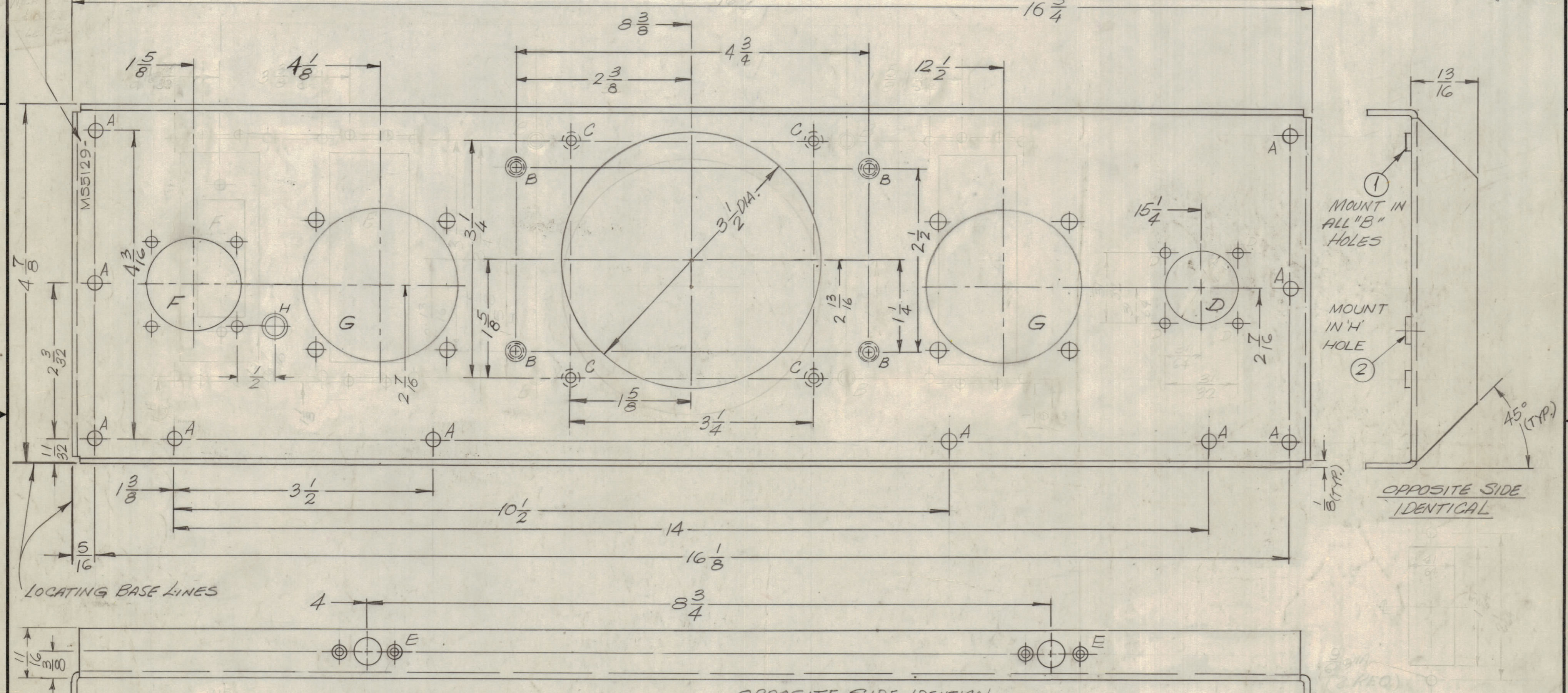


MARK TMC PT. NO. 1/8 HIGH GOTHIC
W/LATEST REV. LETTER.

HOLE	DESCRIPTION	REQ.
A	13/64 DIA.	10
B	.191 - .194 DIA.	4
C	.144 DIA. & C'SINK 82° TO .204 DIA.	4
D	SEE DETAIL	1
E	SEE DETAIL	4
F	SEE DETAIL	1
G	SEE DETAIL	2
H	.250 - .253 DIA.	1

UNLESS OTHERWISE SPECIFIED:
 1. USE MATERIAL THICKNESS FOR MAXIMUM RADIUS ON ALL BENDS
 2. ALL ANGULAR BENDS 90 DEGREES
 3. REMOVE ALL BURRS AND SHARP EDGES
 4. MOUNT INSERTS AFTER FINISHING

REVISIONS						
ZONE	LTR	DESCRIPTION	DATE	E.M.N.O.	DRAFT	CHKD APPD
	X	EXPERIMENTAL RELEASE	8-30-67	-	HR	WY 13/3 ak
	X1	REVISED & RELOCATED DET "F"	9-18-67		H.G.	WY 13/3 ak
	X2	DETAIL "F" DIM 1 3/32 WAS 7/32	9-26-67		ET	WY 13/3 ak
	X3	DETAIL "F" ADDED	12-12-67		ET	WY 13/3 ak
	X4	"B" HOLES RELOCATED WERE .161-.164	4-15-68		ET	WY 13/3 ak
	X5	REVISED & UPDATED	1/9/69		ET	WY 13/3 ak
	Ø	ORIGINAL RELEASE FOR PRODUCTION	2-11-69		RA	WY 13/3 ak
	A	ADDED "H" & "H" HOLE	5-8-69		GE	WY 13/3 ak



DETAIL	X	Y	Z
D	29/32	15/16	9/64
G	13/4	2 1/16	13/64
F	15/32	15/16	9/64

QTY / UNIT	MODEL USED ON	ASS'Y NO.
1	RTMU-41	
APPLICATION		
CODE	3401-451	

NOTICE TO PERSONS RECEIVING THIS DRAWING
 THE TECHNICAL MATERIEL CORPORATION claims proprietary right in the material disclosed hereon. This drawing is issued in confidence for engineering information only and may not be reproduced or used to manufacture anything shown hereon without permission from THE TECHNICAL MATERIEL CORPORATION to the user. This drawing is loaned for mutual assistance and is subject to recall at any time.

REF. LD 2238
 UNLESS OTHERWISE SPECIFIED DIMENSIONS ARE IN INCHES AND INCLUDE CHEMICALLY APPLIED OR PLATED FINISHES

TOLERANCES ON
 DECIMALS .X ± .05
 .XX ± .01
 .XXX ± .005
 FRACTIONS ± 1/64
 ANGLES ± 0° -30'
 MATERIAL .081 THK. ALUMINUM
 5052-H32
 FINISH S404-1/8L 1B DITE

QTY. REQ.	ITEM	PART NO.	DESCRIPTION	SYMBOL
1	2	NT129-1032-4	NUT PLAIN SPLINE	H
4	1	NT129-632-4	NUT, PLAIN, SPLINE	B

F. EATON LIST OF MATERIAL

FINAL APPROVAL: J. De Marco 2-7-69
 MECH. DES. DATE
 ELECT. DES. DATE
 CHECKED: EG DATE: 8-30-67
 DRAWN: H. Austin DATE: 8-30-67

THE TECHNICAL MATERIEL CORP.
 MAMARONECK, NEW YORK

PLATE, REAR

SIZE	CODE IDENT. NO.	DWG NO.	ISSUE
C	82679	M55129	A

SCALE 1:1 SHEET OF