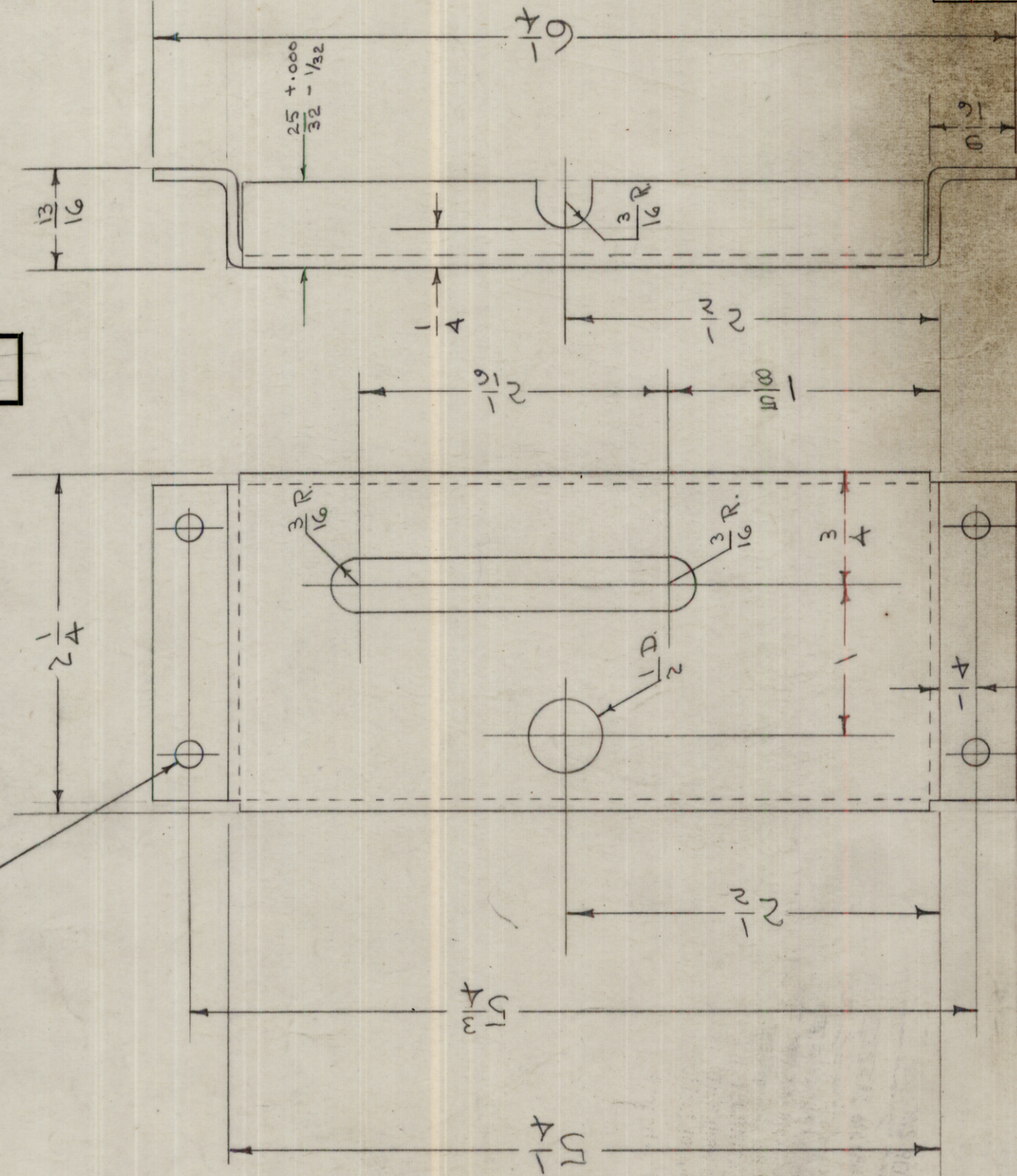


IF IT IS FOUND DESIRABLE TO CHANGE ANY TOLERANCE OR OTHER DETAIL SPECIFIED ON THIS DRAWING NOTIFY THE PURCHASER PROMPTLY.

MAXIMUM ALLOWABLE TOLERANCES HAVE BEEN DETERMINED AND DEVIATIONS WILL BE CAUSE FOR REJECTION. REMOVE ALL BURRS AND SHARP EDGES

11/64 (.171) D. 4 HOLES REQ.



ISSUE ITEM	CHANGED FROM	DATE	CN. NO.	DRAFTS	CHECKER	ENG. APP.
C 1	S-404 WAS S-101	12/11/59	1001	AB	WJC	EMN
B 1	25/32 Dim. Added	10/23/54	1	AB	PB	WJC
A 1	13/16 WAS 11/16	10/11/54	1	AB	WJC	WJC
A 1	15/8 WAS 1 1/8					

TOLERANCES
 DEC. DIM. ±
 FRAC. DIM. ± 1/64
 ANGULAR DIM. ±

DRILL, PUNCH, COMMERCIAL STOCK SIZES AND MANUFACTURERS TOLERANCES ARE NOT INCLUDED.

1	VOX-2 VOX-7	291			
1	PMO-2	285			
1	VOX	101			

1-19-55	1-19-55	
8/18/54		
3-11-54	A-642	
		DATE

REQ. ITEM	PART NO.	DESCRIPTION	SYMBOL
ALUMINUM		THE TECHNICAL MATERIEL CORP. MAMARONECK, NEW YORK	
MATERIAL	WEIGHT PER PC.	COVER, THERMOSTAT	
52S-H32		VOX	
TYPE & TEMPER		3-11-54	
HEAT TREAT. SPEC.		DRAWN	
S-404 YELLOW IRIDITE		AB	
FINISH & SPEC. NO.		ELEC. DES. APP.	
		MECH. DES. APP.	
		CHECKED	
		FINAL APPROVAL	
		MS-503 C	

NOTICE TO PERSONS RECEIVING THIS DRAWING

THE TECHNICAL MATERIEL CORPORATION claims proprietary right in the material disclosed hereon. This drawing is issued in confidence for engineering information only and may not be reproduced or used to manufacture anything shown hereon without permission from THE TECHNICAL MATERIEL CORPORATION to the user. This drawing is loaned for mutual assistance and is subject to recall at any time.

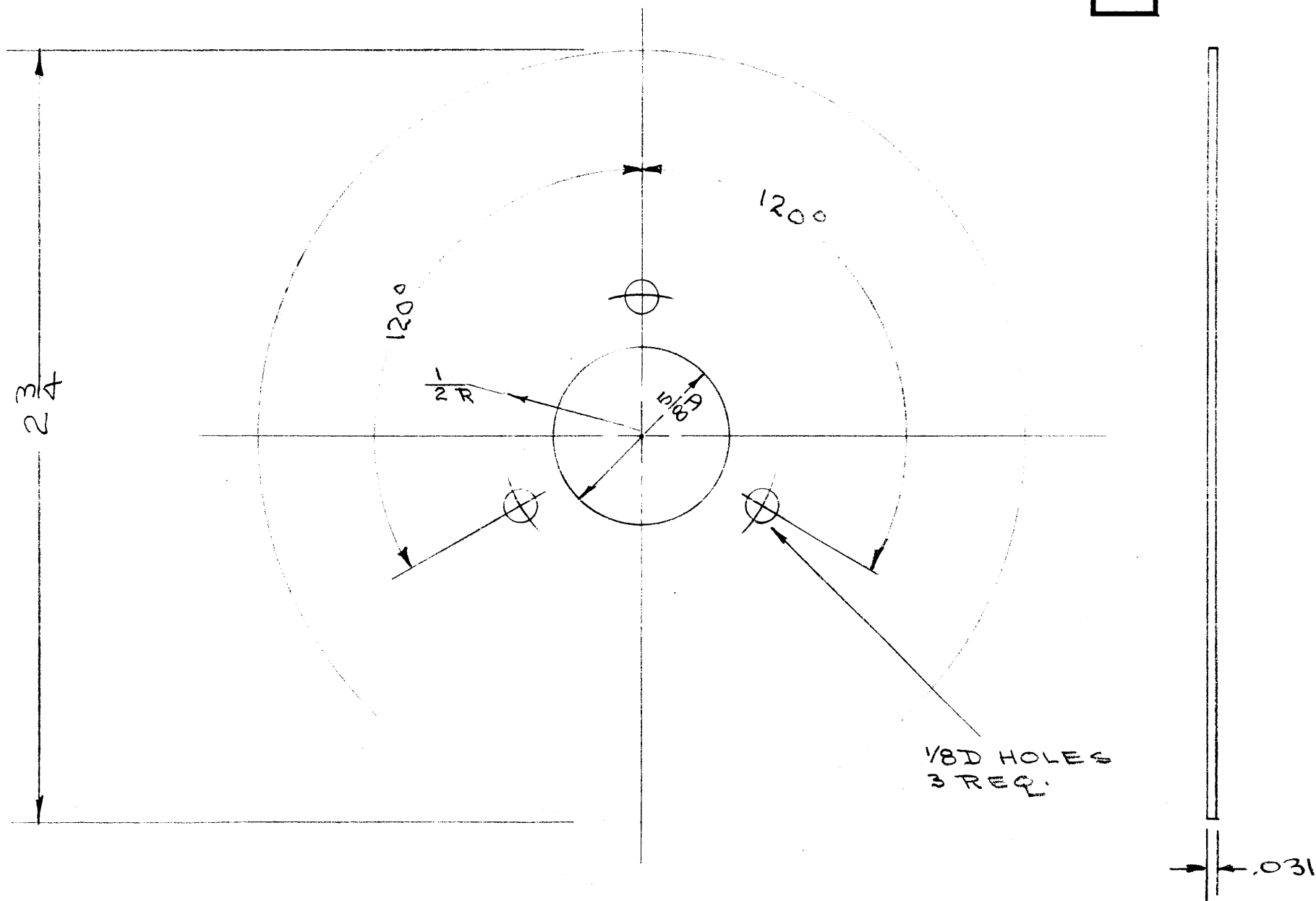
Property of:
 THE TECHNICAL MATERIEL CORPORATION
 MAMARONECK, NEW YORK

MS-503 C

IF IT IS FOUND DESIRABLE TO CHANGE ANY TOLERANCE OR OTHER DETAIL SPECIFIED ON THIS DRAWING NOTIFY THE PURCHASER PROMPTLY.

MAXIMUM ALLOWABLE TOLERANCES HAVE BEEN DETERMINED AND DEVIATIONS WILL BE CAUSE FOR REJECTION. REMOVE ALL BURRS AND SHARP EDGES

MS-504 A



NOTICE TO PERSONS RECEIVING THIS DRAWING
 THE TECHNICAL MATERIEL CORPORATION claims proprietary right in the material disclosed hereon. This drawing is issued in confidence for engineering information only and may not be reproduced or used to manufacture anything shown hereon without permission from THE TECHNICAL MATERIEL CORPORATION to the user. This drawing is loaned for mutual assistance and is subject to recall at any time.

Property of:
 THE TECHNICAL MATERIEL CORPORATION
 MAMARONECK, NEW YORK

REQ.	ITEM	PART NO.	DESCRIPTION	SYMBOL
		.031	THE TECHNICAL MATERIEL CORP. MAMARONECK, NEW YORK	
		ALUMINUM	DIAL BLANK	
		525-H32		
		TYPE & TEMPER		
		HEAT TREAT. SPEC.		
		5-404 YELLOW IRIDITE		
		FINISH & SPEC. NO.		

A	1	S-404 WAS S-101	12/11/59	1001	#B		EMN
ISSUE	ITEM	CHANGED FROM	DATE	CN. NO.	DRAFTS	CHECKER	ENG. APP.
TOLERANCES			SCALE:				
ALL OTHERS	DEC. DIM. ±	FRAC. DIM. ±	ANGULAR DIM. ±	DRILL, PUNCH, COMMERCIAL STOCK SIZES AND MANUFACTURERS TOLERANCES ARE NOT INCLUDED.			

1	TAC-1	132	LD-186	1-20-54
REQ	MODEL	PROJECT NO.	ASS'Y. NO.	DATE

USED ON

IF IT IS FOUND DESIRABLE TO CHANGE ANY TOLERANCE OR OTHER DETAIL SPECIFIED ON THIS DRAWING NOTIFY THE PURCHASER PROMPTLY.

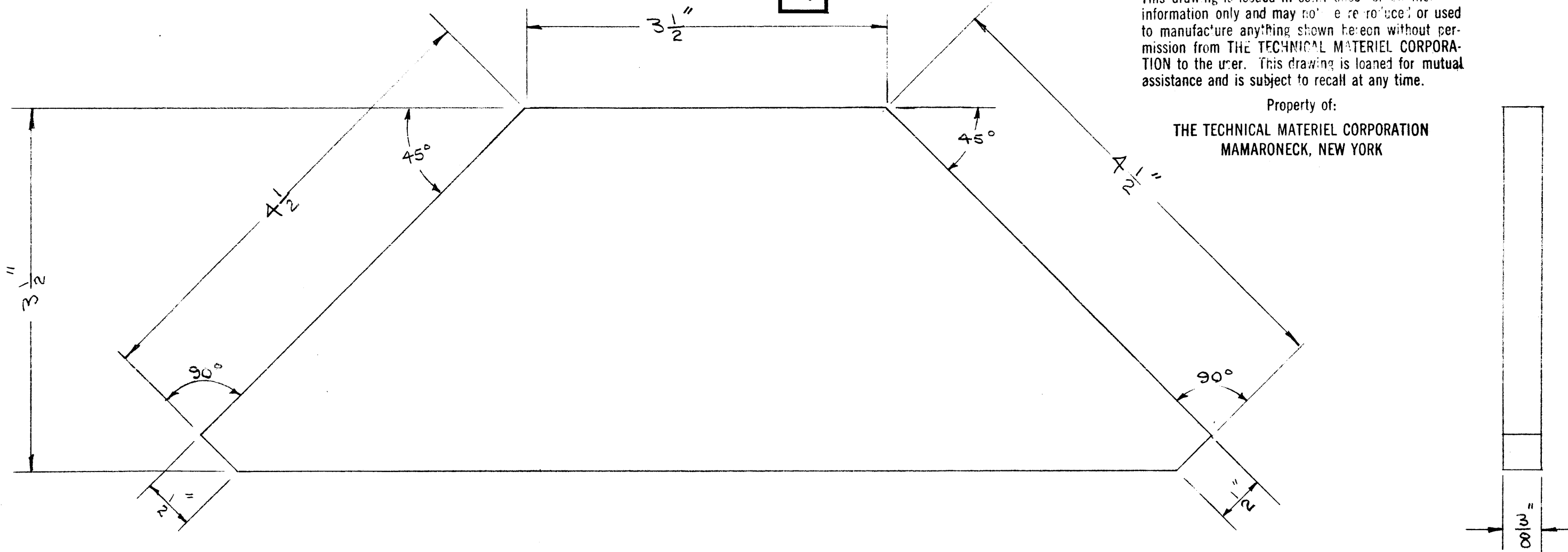
MAXIMUM ALLOWABLE TOLERANCES HAVE BEEN DETERMINED AND DEVIATIONS WILL BE CAUSE FOR REJECTION. REMOVE ALL BURRS AND SHARP EDGES

MS-505

NOTICE TO PERSONS RECEIVING THIS DRAWING

THE TECHNICAL MATERIEL CORPORATION claims proprietary right in the material disclosed herein. This drawing is issued in confidence for engineering information only and may not be reproduced or used to manufacture anything shown hereon without permission from THE TECHNICAL MATERIEL CORPORATION to the user. This drawing is loaned for mutual assistance and is subject to recall at any time.

Property of:
THE TECHNICAL MATERIEL CORPORATION
MAMARONECK, NEW YORK



REQ.	ITEM	PART NO.	DESCRIPTION	SYMBOL
		3/8"	THE TECHNICAL MATERIEL CORP.	
		STOCK SIZE	MAMARONECK, NEW YORK	
	STEEL	ff	GUSSET PLATE	
	MATERIAL	WEIGHT PER PC.	SPLICE ASS'Y.	
	HOT ROLLED			
	TYPE & TEMPER			
	ff			
	HEAT TREAT. SPEC.			
	ff			
	FINISH & SPEC. NO.			

ISSUE	ITEM	CHANGED FROM	DATE	CN. NO.	DRAFTS	CHECKER	ENG. APP.
TOLERANCES			SCALE: ff				
ALL OTHERS	DEC. DIM. ±	FRAC. DIM. ±	ANGULAR DIM. ±	DRILL, PUNCH, COMMERCIAL STOCK SIZES AND MANUFACTURERS TOLERANCES ARE NOT INCLUDED.			
		1/32					

8		287	A-691	2-24-54
REQ	MODEL	PROJECT NO.	ASS'Y. NO.	DATE
USED ON				

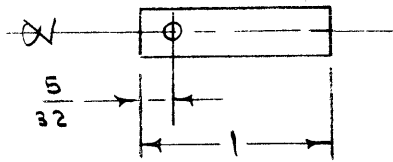
CHECKED	FINAL APPROVAL
REF.: GC-7017B	MS-505

IF IT IS FOUND DESIRABLE TO CHANGE ANY TOLERANCE OR OTHER DETAIL SPECIFIED ON THIS DRAWING NOTIFY THE PURCHASER PROMPTLY.

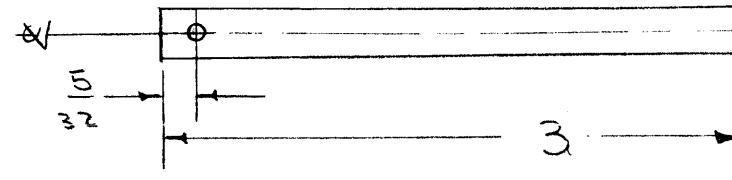
MAXIMUM ALLOWABLE TOLERANCES HAVE BEEN DETERMINED AND DEVIATIONS WILL BE CAUSE FOR REJECTION. REMOVE ALL BURRS AND SHARP EDGES

MS-513
D

MS-513-1 2 REQ.

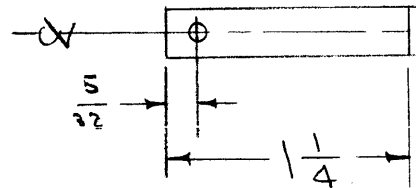


MS-513-5 1 REQ.

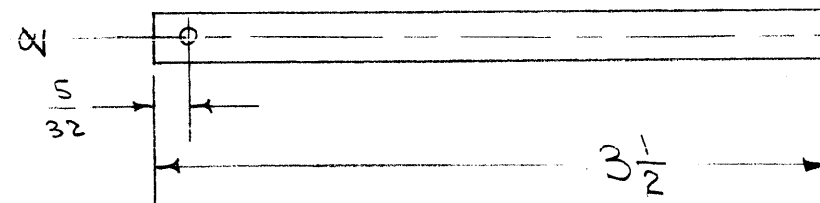


ALL HOLES #50 DR. (.010) DIA.

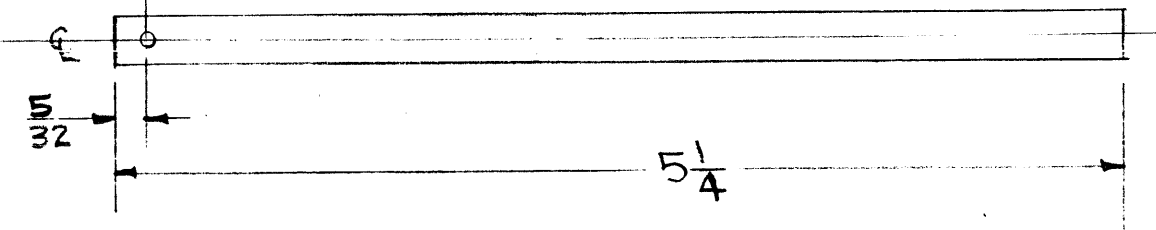
MS-513-2 4 REQ.



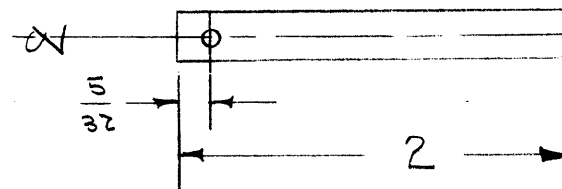
MS-513-6 1 REQ.



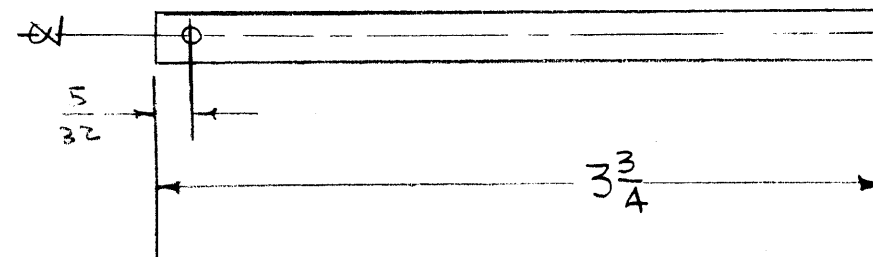
MS-513-9 1 REQ.



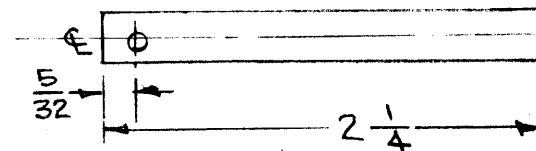
MS-513-3 2 REQ.



MS-513-7 1 REQ.



MS-513-4 1 REQ.



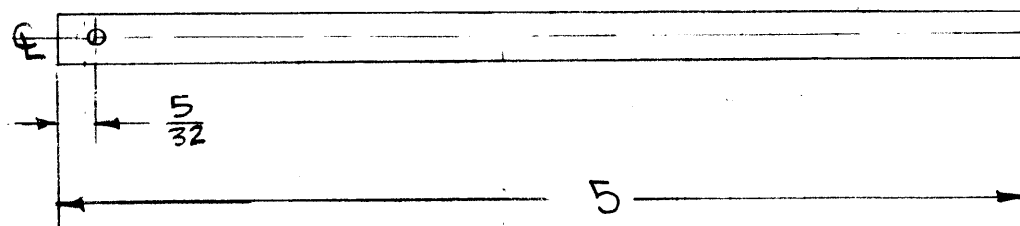
NOTICE TO PERSONS RECEIVING THIS DRAWING

THE TECHNICAL MATERIEL CORPORATION claims proprietary right in the material disclosed hereon. This drawing is issued in confidence for engineering information only and may not be reproduced or used to manufacture anything shown hereon without permission from THE TECHNICAL MATERIEL CORPORATION to the user. This drawing is loaned for mutual assistance and is subject to recall at any time.

Property of:

THE TECHNICAL MATERIEL CORPORATION
MAMARONECK, NEW YORK

MS-513-8 1 REQ.



D	12	FINISH ADDED	4/9/57	4	16	HLL	APP
	11	MAT'L. WAS NEKEL SILVER					
	10	HOLE SIZE WAS .0625"					
	9	MS-513-9 WAS 1 1/8"					
	8	MS-513-8 WAS 2 1/16" & 1/8"					
	7	MS-513-7 WAS 5"					
	6	MS-513-6 WAS 4 3/4"					
	5	MS-513-5 WAS 3 3/4" - 2 REQ					
	4	MS-513-4 WAS 1 3/4"					
	3	MS-513-3 WAS 2 3/8" - 1 REQ.					
	2	MS-513-2 WAS 2" - 2 REQ					
	1	MS-513-1 WAS 5 REQ.					
C	1	MS-513-9 ADDED	1/27/54	3	HLL	CDD	WLL
B	1	MS-513-8 ADDED	8/6/54	2	C.D.D.	HLL	WLL
A	5	MS-513-7 ADDED					
	4	-6 WAS 2 REQ.					
	3	2 3/8 WAS 2 1/8					
A	2	1 3/4 WAS 3					
	1	REDRAWN					
ISSUE	ITEM	CHANGED FROM	DATE	CN. NO.	DRAFTS	CHECKER	ENG. APP.
TOLERANCES			SCALE: 1" = 1"				
ALL OTHERS	DEC. DIM. ± FRAC. DIM. ± 1/32 ANGULAR DIM. ±		DRILL, PUNCH, COMMERCIAL STOCK SIZES AND MANUFACTURERS TOLERANCES ARE NOT INCLUDED.				

SEE ABOVE	TAC-1	132	A-782	1-27-54
REQ. PER UNIT	TAC-1	132	A-784	1-15-54
	MODEL	PROJECT NO.	ASS'Y. NO.	DATE
USED ON				

REQ.	ITEM	PART NO.	DESCRIPTION	SYMBOL
		.025 X 1/4	THE TECHNICAL MATERIEL CORP. MAMARONECK, NEW YORK	
		COPPER	CONNECTING LEADS SW-14A	
		COMMERCIAL SOFT	TAC-1	
		TYPE & TEMPER	C.D.D.	WLL
		HEAT TREAT. SPEC.	DRAWN	MECH. DES. APP.
		SILVER PLATE .0003	CHECKED	FINAL APPROVAL
		FINISH & SPEC. NO.		

IF IT IS FOUND DESIRABLE TO CHANGE ANY TOLERANCE OR OTHER DETAIL SPECIFIED ON THIS DRAWING NOTIFY THE PURCHASER PROMPTLY.

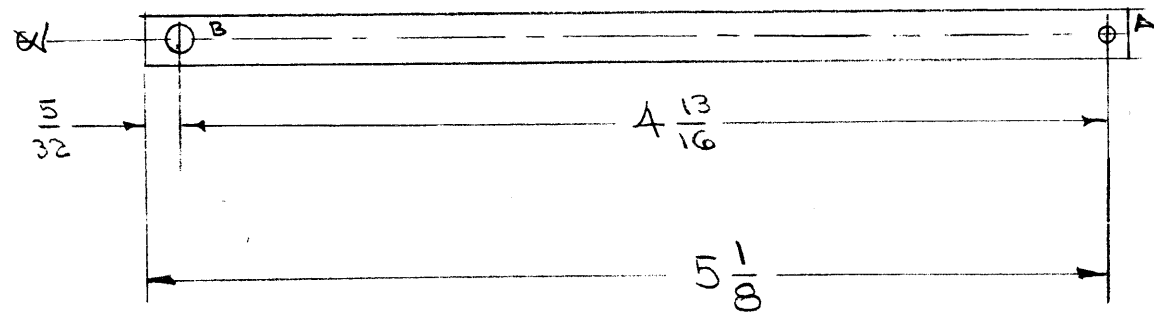
MAXIMUM ALLOWABLE TOLERANCES HAVE BEEN DETERMINED AND DEVIATIONS WILL BE CAUSE FOR REJECTION. REMOVE ALL BURRS AND SHARP EDGES

MS-514 C

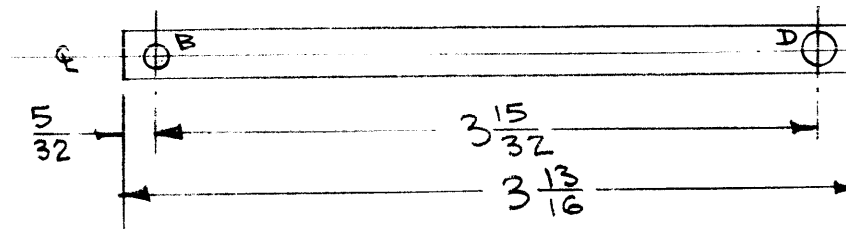
A-NO. 50(.070) D.
 B- 5/32(.156) D.
 C. NO. 36(.108) D.
 D. 13/64(.187) D.

3 HOLES REQ.
 2 " " "
 1 " " "
 2 " " "

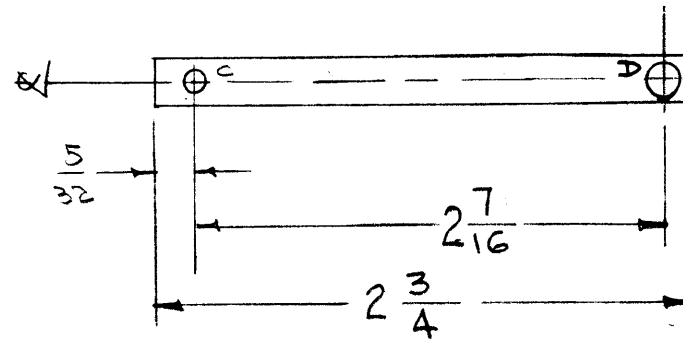
MS-514-1



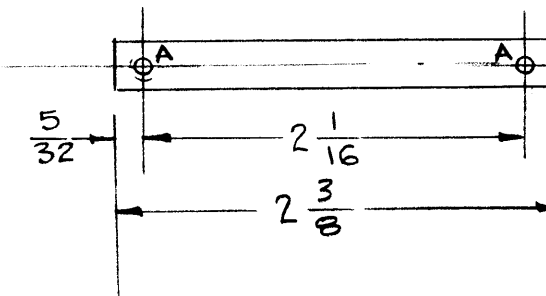
MS-514-3



MS-514-2



MS-514-4



NOTICE TO PERSONS RECEIVING THIS DRAWING

THE TECHNICAL MATERIEL CORPORATION claims proprietary right in the material disclosed hereon. This drawing is issued in confidence for engineering information only and may not be reproduced or used to manufacture anything shown hereon without permission from THE TECHNICAL MATERIEL CORPORATION to the user. This drawing is loaned for mutual assistance and is subject to recall at any time.

Property of:
 THE TECHNICAL MATERIEL CORPORATION
 MAMARONECK, NEW YORK

B	2	13/64" D" Holes Were 3/16	9/10/57	3	Sec.	Hand	Hand
	1	1" C" Hole Deleted					
	7	MS-514-1 WAS 5 7/8 LONG ONE A HOLE DELETED					
	6	FINISH ADDED					
	5	MATL. WAS NICKEL SILVER					
	4	"D" HOLE WAS 1 REQ.	4/9/57	2	KG	Hand	Hand
	3	MS-514-3 & A ADDED					
A	2	"A" HOLE QUAN. WAS 4					
	1	MS-514-2 WAS 6 7/8" LONG					
	2	"C" HOLES ADDED	8/6/54	1	C.D.S.	Hand	Hand
1	RE-DRAWN WAS 1 PIECE						

ISSUE	ITEM	CHANGED FROM	DATE	CN. NO.	DRAFTS	CHECKER	ENG. APP.
-------	------	--------------	------	---------	--------	---------	-----------

TOLERANCES		SCALE:
ALL OTHERS	DEC. DIM. ± FRAC. DIM. ± 1/4 ANGULAR DIM. ±	DRILL, PUNCH, COMMERCIAL STOCK SIZES AND MANUFACTURERS TOLERANCES ARE NOT INCLUDED.

LEACH	TAC-1	132	A-782	1-27-54
REQ. PER UNIT	MODEL	PROJECT NO.	ASS'Y. NO.	DATE
USED QN				

REQ. ITEM	PART NO.	DESCRIPTION	SYMBOL
.025 X 1/4		THE TECHNICAL MATERIEL CORP. MAMARONECK, NEW YORK	
STOCK SIZE		CONNECTING STRAPS, SW-14A	
COPPER	#	TAC-1	
MATERIAL WEIGHT PER PC.		C.D.D.	
COMMERCIAL SOFT		DRAWN	
TYPE & TEMPER		ELEC. DES. APP.	
HEAT TREAT. SPEC.		MECH. DES. APP.	
SILVER PLATE		CHECKED	
.0003		FINAL APPROVAL	
FINISH & SPEC. NO.		MS-514	
		E	

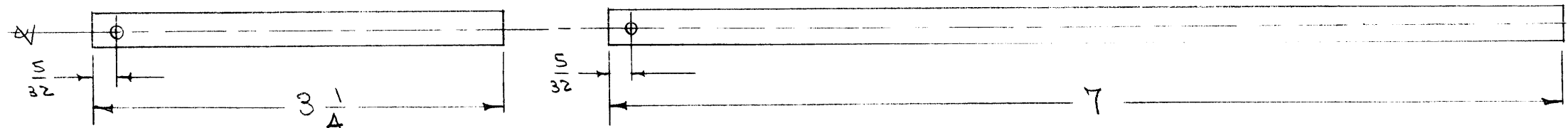
IF IT IS FOUND DESIRABLE TO CHANGE ANY TOLERANCE OR OTHER DETAIL SPECIFIED ON THIS DRAWING NOTIFY THE PURCHASER PROMPTLY.

MAXIMUM ALLOWABLE TOLERANCES HAVE BEEN DETERMINED AND DEVIATIONS WILL BE CAUSE FOR REJECTION. REMOVE ALL BURRS AND SHARP EDGES

MS-515 B

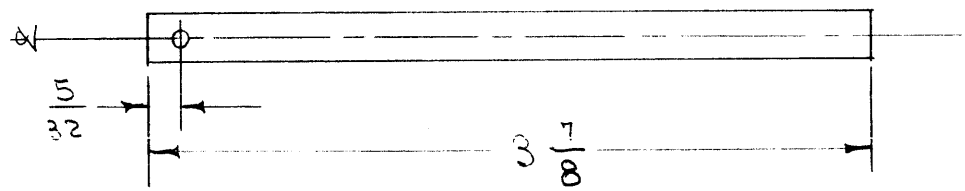
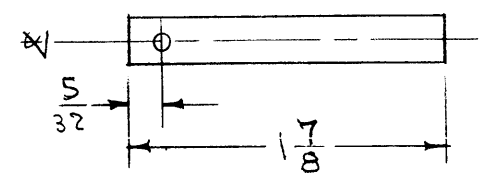
MS-515-5 3 REQ.

MS-515-8 1 REQ.



MS-515-2 1 REQ.

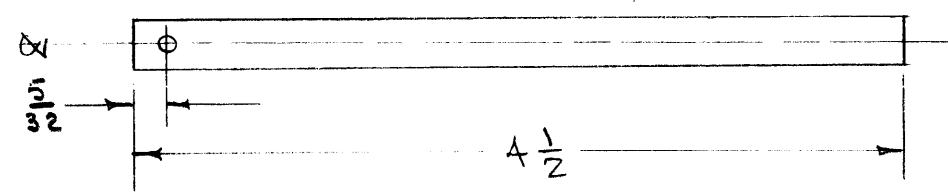
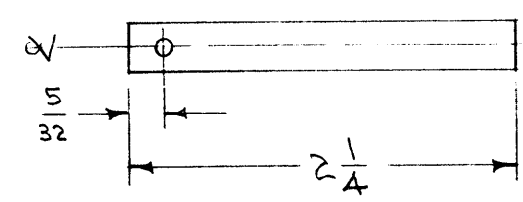
MS-515-6 1 REQ.



NOTE:
ALL HOLES #50 DR. (.070) D.

MS-515-3 5 REQ.

MS-515-7 1 REQ.



NOTICE TO PERSONS RECEIVING THIS DRAWING

THE TECHNICAL MATERIEL CORPORATION claims proprietary right in the material disclosed hereon. This drawing is issued in confidence for engineering information only and may not be reproduced or used to manufacture anything shown hereon without permission from THE TECHNICAL MATERIEL CORPORATION to the user. This drawing is loaned for mutual assistance and is subject to recall at any time.

Property of:
THE TECHNICAL MATERIEL CORPORATION
MAMARONECK, NEW YORK

B	8	HOLE SIZE WAS .062 D.	4/9/57	2	16	J.H.K.	M.C.
	7	FINISH ADDED					
	6	MAT'L. WAS NICKEL SILVER					
	5	MS-515-8 WAS MS-515-9					
	4	MS-515-7 WAS 4 1/8 LONG					
	3	MS-515-3 WAS 3 REQ.					
A	2	MS-515-1 DELE.	5/10/55	1	1	M.C.	M.C.
	1	MS-515-4, 8, 10 DELETED					
ISSUE	ITEM	CHANGED FROM	DATE	CN. NO.	DRAFTS	CHECKER	ENG. APP.

TOLERANCES		SCALE: 1" = 1"
ALL OTHERS	DEC. DIM. ± FRAC. DIM. ± 1/32 ANGULAR DIM. ±	DRILL, PUNCH, COMMERCIAL STOCK SIZES AND MANUFACTURERS TOLERANCES ARE NOT INCLUDED.

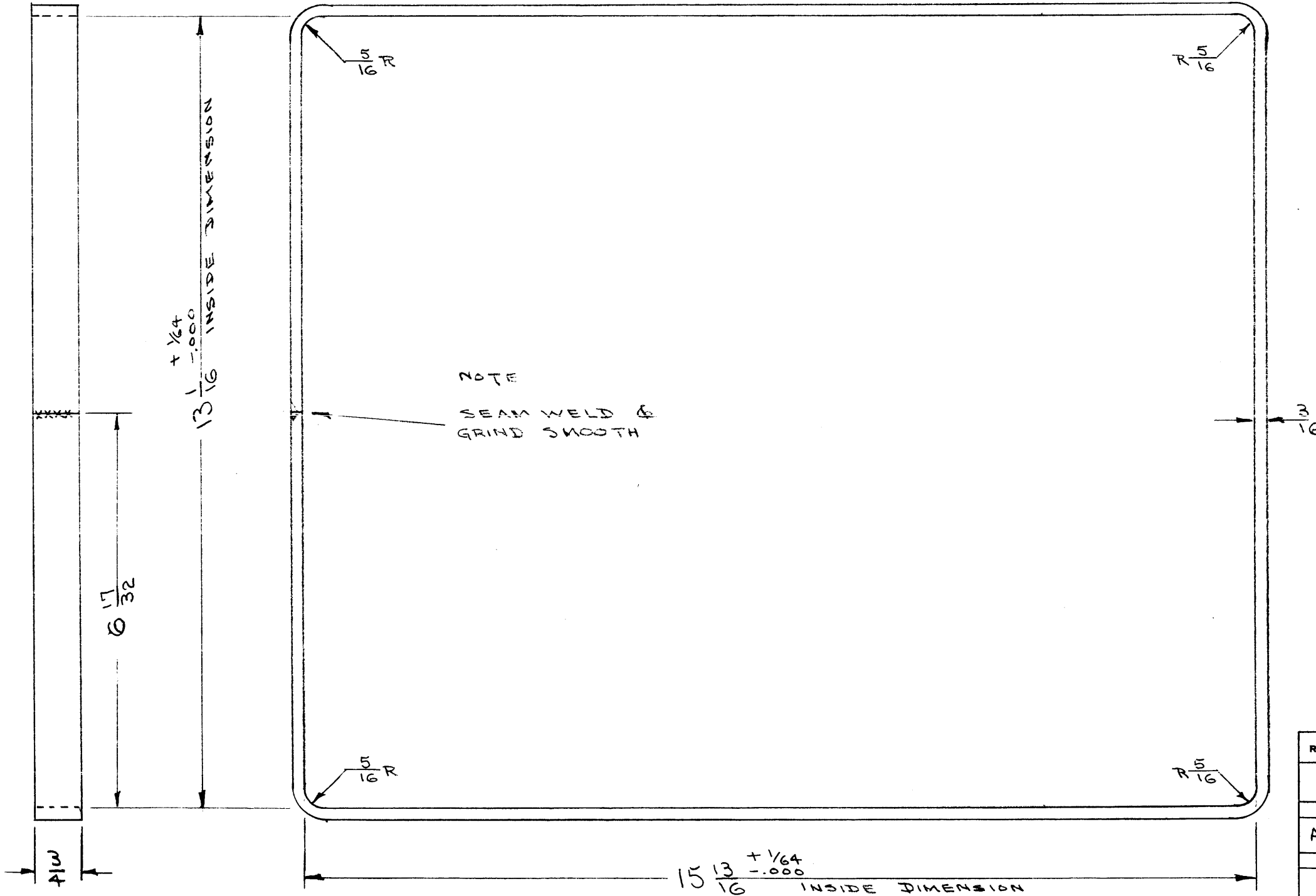
SEE ABOVE	TAC-1	132	A-788	1-28-54
REQ. PER UNIT	MODEL	PROJECT NO.	ASS'Y. NO.	DATE
USED ON				

REQ.	ITEM	PART NO.	DESCRIPTION	SYMBOL
		.025 x 1/4	THE TECHNICAL MATERIEL CORP. MAMARONECK, NEW YORK	
		COPPER	CONNECTING LEADS - SW-145	
		COMMERCIAL SOFT	TAC-1	
		HEAT TREAT. SPEC. SILVER PLATE .0003	C.D.D.	
		FINISH & SPEC. NO.	DRWN ELEC. DES. APP. MECH. DES. APP.	
			CHECKED FINAL APPROVAL	
			MS-515	B.

IF IT IS FOUND DESIRABLE TO CHANGE ANY TOLERANCE OR OTHER DETAIL SPECIFIED ON THIS DRAWING NOTIFY THE PURCHASER PROMPTLY.

MAXIMUM ALLOWABLE TOLERANCES HAVE BEEN DETERMINED AND DEVIATIONS WILL BE CAUSE FOR REJECTION. REMOVE ALL BURRS AND SHARP EDGES

MS-528



NOTICE TO PERSONS RECEIVING THIS DRAWING
 THE TECHNICAL MATERIEL CORPORATION claims proprietary right in the material disclosed hereon. This drawing is issued in confidence for engineering information only and may not be reproduced or used to manufacture anything shown hereon without permission from THE TECHNICAL MATERIEL CORPORATION to the user. This drawing is loaned for mutual assistance and is subject to recall at any time.

Property of:
 THE TECHNICAL MATERIEL CORPORATION
 MAMARONECK, NEW YORK

REQ.	ITEM	PART NO.	DESCRIPTION	SYMBOL
		3/16 THICK	THE TECHNICAL MATERIEL CORP.	
		STOCK SIZE	MAMARONECK, NEW YORK	
		ALUMINUM	FRONT RING	
		MATERIAL	(TAC PLASTIC CASE)	
		2S H14	JAD 6/15/54	APB
		TYPE & TEMPER	DRWN	ELEC. DES. APP. MECH. DES. APP.
			EDS 6/17/54	APB
		HEAT TREAT. SPEC.	CHECKED	FINAL APPROVAL
				MS-528
		FINISH & SPEC. NO.		

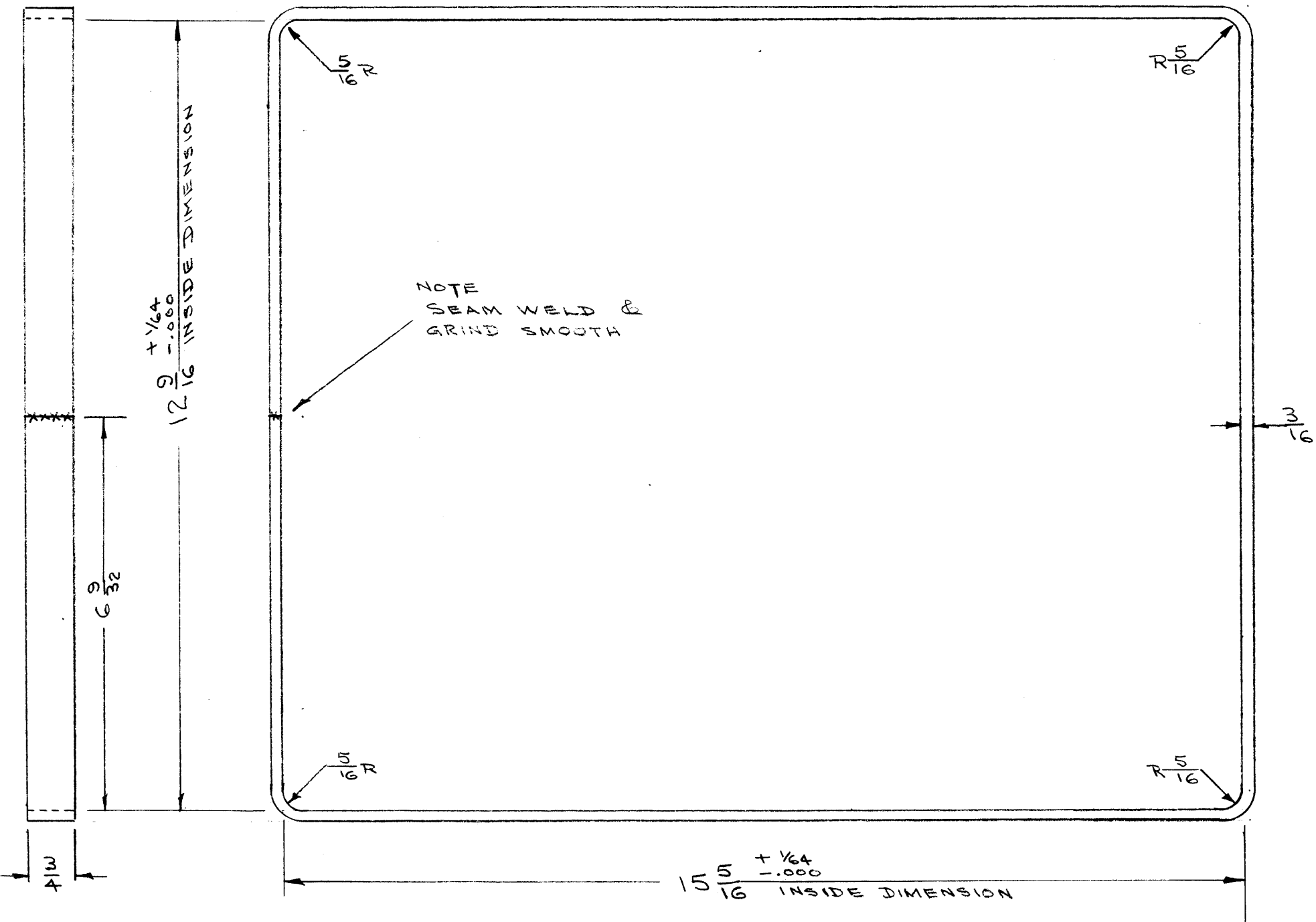
ISSUE	ITEM	CHANGED FROM	DATE	CN. NO.	DRAFTS	CHECKER	ENG. APP.
TOLERANCES							
ALL OTHERS	DEC. DIM. ±		SCALE:				
	FRAC. DIM. ±		DRILL, PUNCH, COMMERCIAL STOCK				
	ANGULAR DIM. ±		SIZES AND MANUFACTURERS TOLERANCES ARE NOT INCLUDED.				

1	CTAC	311	A-796	6-16-54
MODEL	PROJECT NO.	ASS'Y. NO.	DATE	
USED ON				

IF IT IS FOUND DESIRABLE TO CHANGE ANY TOLERANCE OR OTHER DETAIL SPECIFIED ON THIS DRAWING NOTIFY THE PURCHASER PROMPTLY.

MAXIMUM ALLOWABLE TOLERANCES HAVE BEEN DETERMINED AND DEVIATIONS WILL BE CAUSE FOR REJECTION. REMOVE ALL BURRS AND SHARP EDGES

MS-529



NOTICE TO PERSONS RECEIVING THIS DRAWING

THE TECHNICAL MATERIEL CORPORATION claims proprietary right in the material disclosed hereon. This drawing is issued in confidence for engineering information only and may not be reproduced or used to manufacture anything shown hereon without permission from THE TECHNICAL MATERIEL CORPORATION to the user. This drawing is loaned for mutual assistance and is subject to recall at any time.

Property of:
 THE TECHNICAL MATERIEL CORPORATION
 MAMARONECK, NEW YORK

REQ.	ITEM	PART NO.	DESCRIPTION	SYMBOL
		3/16 THICK	THE TECHNICAL MATERIEL CORP.	
		STOCK SIZE	MAMARONECK, NEW YORK	
		ALUMINUM	REAR RING	
		MATERIAL	(TAC PLASTIC CASE)	
		25 H 14		
		TYPE & TEMPER		
		HEAT TREAT. SPEC.		
		FINISH & SPEC. NO.		

ISSUE	ITEM	CHANGED FROM	DATE	CN. NO.	DRAFTS	CHECKER	ENG. APP.
TOLERANCES		SCALE:					
ALL OTHERS	DEC. DIM. \pm	DRILL, PUNCH, COMMERCIAL STOCK					
	FRAC. DIM. \pm	SIZES AND MANUFACTURERS					
	ANGULAR DIM. \pm	TOLERANCES ARE NOT INCLUDED.					

1	STAC	311	A-796	6-16-54
DATE	MODEL	PROJECT NO.	ASS'Y. NO.	DATE

USED ON

MS-529

IF IT IS FOUND DESIRABLE TO CHANGE ANY TOLERANCE OR OTHER DETAIL SPECIFIED ON THIS DRAWING NOTIFY THE PURCHASER PROMPTLY.

MAXIMUM ALLOWABLE TOLERANCES HAVE BEEN DETERMINED AND DEVIATIONS WILL BE CAUSE FOR REJECTION. REMOVE ALL BURRS AND SHARP EDGES

T.M.C. NO.	A	USED ON
MS-531-1	12 1/8"	REAR COVER
MS-531-2	12 3/4"	FRONT COVER

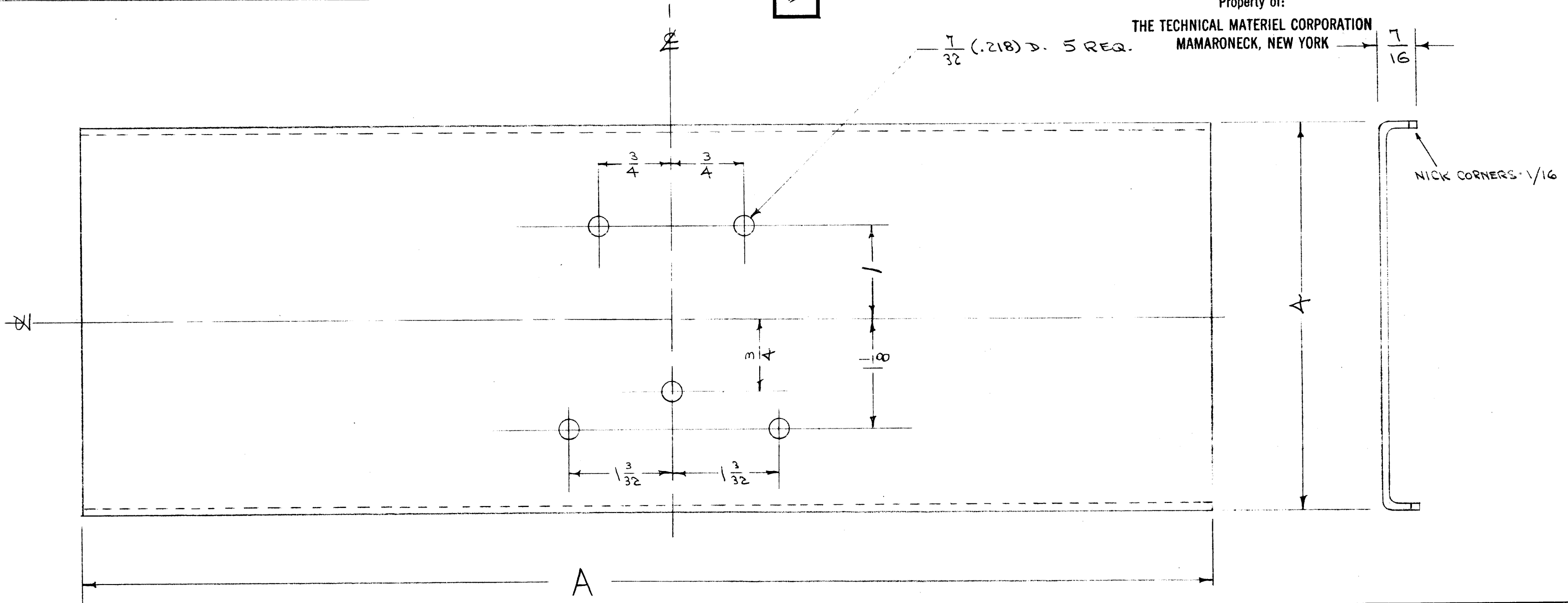
MS-531 C

NOTICE TO PERSONS RECEIVING THIS DRAWING

THE TECHNICAL MATERIEL CORPORATION claims proprietary right in the material disclosed hereon. This drawing is issued in confidence for engineering information only and may not be reproduced or used to manufacture anything shown hereon without permission from THE TECHNICAL MATERIEL CORPORATION to the user. This drawing is loaned for mutual assistance and is subject to recall at any time.

Property of:

THE TECHNICAL MATERIEL CORPORATION
MAMARONECK, NEW YORK



NOTE: FINISH -
S-404 YELLOW IRIDITE
S-114 ZINC CHROMATE PRIMER
S-115 SMOOTH GREY ENAMEL

ISSUE	ITEM	CHANGED FROM	DATE	CN. NO.	DRAFTS	CHECKER	ENG. APP.
C	1	S-404 WAS S-101	12/11/59	1001	FB		EMN
B	1	7/16 WAS 3/8	10/13/56	2	FB	USE	USE
A	1	BLANK SIZE ADDED	6/2/55	1	FB	USE	USE

TOLERANCES		SCALE:
ALL OTHERS	DEC. DIM. ± FRAC. DIM. ± 1/64 ANGULAR DIM. ±	DRILL, PUNCH, COMMERCIAL STOCK SIZES AND MANUFACTURERS TOLERANCES ARE NOT INCLUDED.

REQ. PER UNIT	MODEL	PROJECT NO.	ASS'Y. NO.	DATE
1 EA.	CTAC	311	A-799	6-30-54
USED ON				

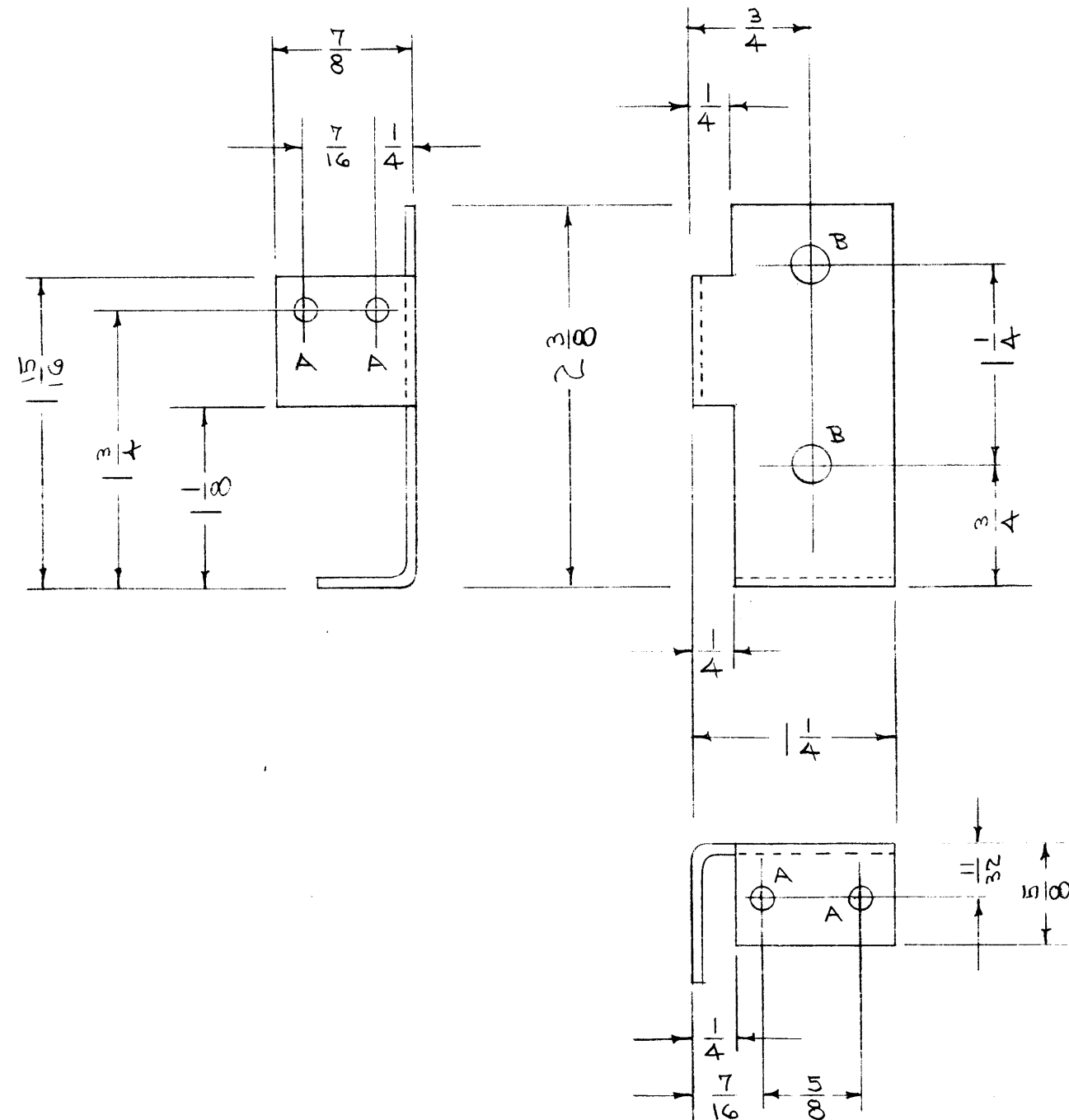
REQ. ITEM	PART NO.	DESCRIPTION	SYMBOL
.064		THE TECHNICAL MATERIEL CORP. MAMARONECK, NEW YORK	
ALUMINUM	—#—	BRACE PLATE, COVER	
52S-H32		CTAC	
CD.D. 6-30-54			
HEAT TREAT. SPEC.			
SEE NOTE			
FINISH & SPEC. NO.			

MS-531 C

IF IT IS FOUND DESIRABLE TO CHANGE ANY TOLERANCE OR OTHER DETAIL SPECIFIED ON THIS DRAWING NOTIFY THE PURCHASER PROMPTLY.

MAXIMUM ALLOWABLE TOLERANCES HAVE BEEN DETERMINED AND DEVIATIONS WILL BE CAUSE FOR REJECTION. REMOVE ALL BURRS AND SHARP EDGES

MS-544 A



A- 9/64 (.140) D. 4 HOLES REQ.
 B- 1/4 (.250) D. 2 " " "

NOTICE TO PERSONS RECEIVING THIS DRAWING

THE TECHNICAL MATERIEL CORPORATION claims proprietary right in the material disclosed hereon. This drawing is issued in confidence for engineering information only and may not be reproduced or used to manufacture anything shown hereon without permission from THE TECHNICAL MATERIEL CORPORATION to the user. This drawing is loaned for mutual assistance and is subject to recall at any time.

Property of:
THE TECHNICAL MATERIEL CORPORATION
 MAMARONECK, NEW YORK

A	1	S-404 WAS S-101	12/11/54	1001	EMN			
ISSUE	ITEM	CHANGED FROM	DATE	CN. NO.	DRAFTS	CHECKER	ENG. APP.	
TOLERANCES			SCALE:					
ALL OTHERS	DEC. DIM. ±	DRILL, PUNCH, COMMERCIAL STOCK SIZES AND MANUFACTURERS TOLERANCES ARE NOT INCLUDED.						
	FRAC. DIM. ±							
	ANGULAR DIM. ±							

1	PMO-1	285		8-26-54
RS. PER. UNIT	MODEL	PROJECT NO.	ASS'Y. NO.	DATE
	USED ON			

REQ.	ITEM	PART NO.	DESCRIPTION	SYMBOL
		.064	THE TECHNICAL MATERIEL CORP.	
		STOCK SIZE	MAMARONECK. NEW YORK	
	ALUMINUM	—H—	BRACKET, TUNING COIL	
	MATERIAL	WEIGHT PER PC.	PMO	
	52S H32		CDD 8-26-54	
	TYPE & TEMPER		DRAWN	ELEC. DES. APP.
			M.H.S.	
	HEAT TREAT. SPEC.		CHECKED	FINAL APPROVAL
	S-404 YELLOW IRIDITE			
	FINISH & SPEC. NO.		MS-544	A

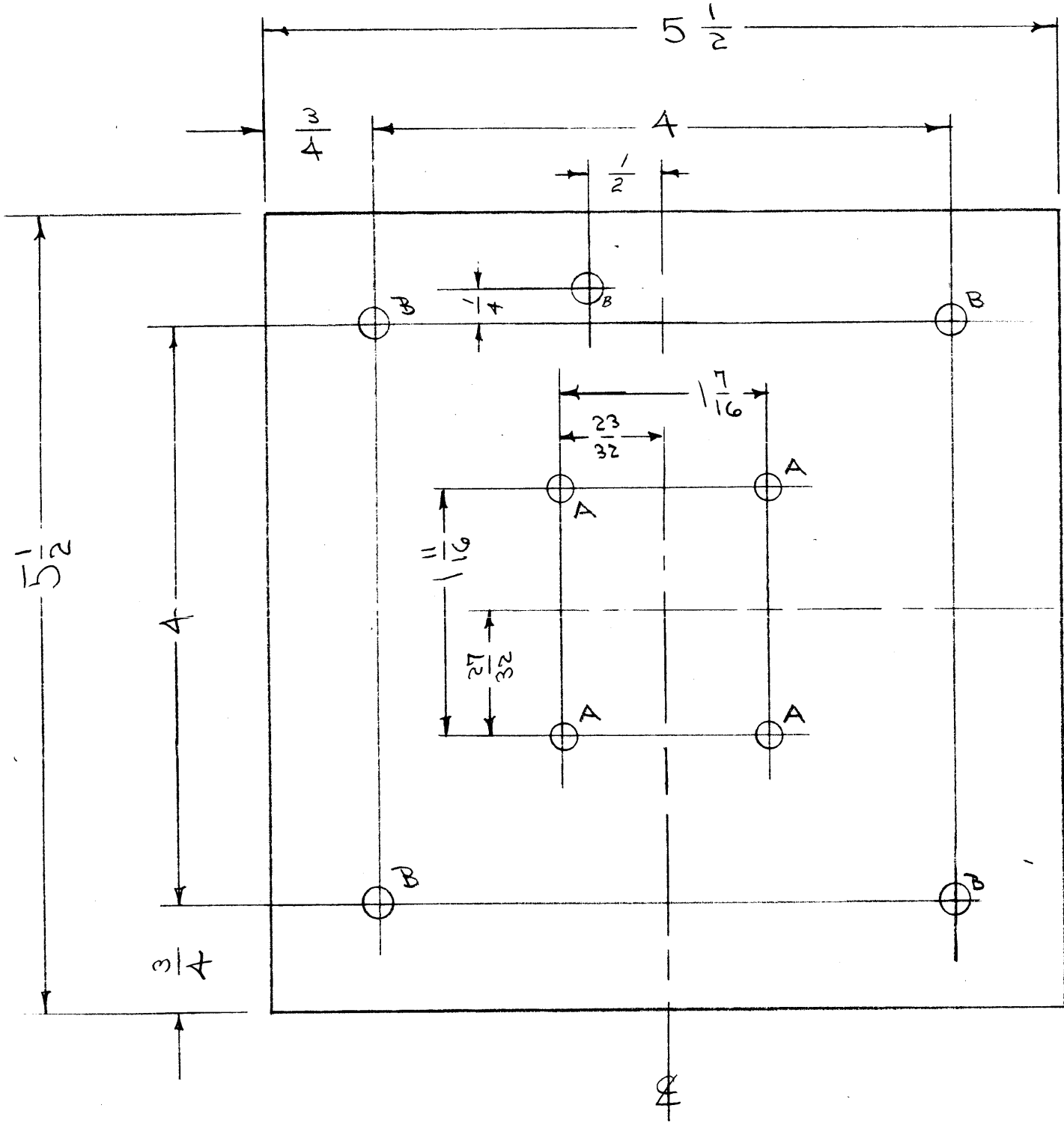
IF IT IS FOUND DESIRABLE TO CHANGE ANY TOLERANCE OR OTHER DETAIL SPECIFIED ON THIS DRAWING NOTIFY THE PURCHASER PROMPTLY.

MAXIMUM ALLOWABLE TOLERANCES HAVE BEEN DETERMINED AND DEVIATIONS WILL BE CAUSE FOR REJECTION. REMOVE ALL BURRS AND SHARP EDGES

MS-546 C

A - 1/64 (.171) D.
B - 7/32 (.218) D.

4 HOLES REQ.
5 " "



NOTICE TO PERSONS RECEIVING THIS DRAWING
 THE TECHNICAL MATERIEL CORPORATION claims proprietary right in the material disclosed hereon. This drawing is issued in confidence for engineering information only and may not be reproduced or used to manufacture anything shown hereon without permission from THE TECHNICAL MATERIEL CORPORATION to the user. This drawing is loaned for mutual assistance and is subject to recall at any time.
 Property of:
 THE TECHNICAL MATERIEL CORPORATION
 MAMARONECK, NEW YORK

ISSUE	ITEM	CHANGED FROM	DATE	CN. NO.	DRAFTS	CHECKER	ENG. APP.
C	1	S-404 WAS S-101	12/11/59	1001	#8		EMN
B	1	NOTE DELETED	8/1/56	2	JMB	WSE	WSE
A	1	HOLE MOVED "C"	12-3-54	1	JMB	WSE	WSE

1	VRA-2	259	7-27-54
1	VRA-1	259	7-27-54
REG. PER UNIT	MODEL	PROJECT NO.	ASS'Y. NO.
			DATE

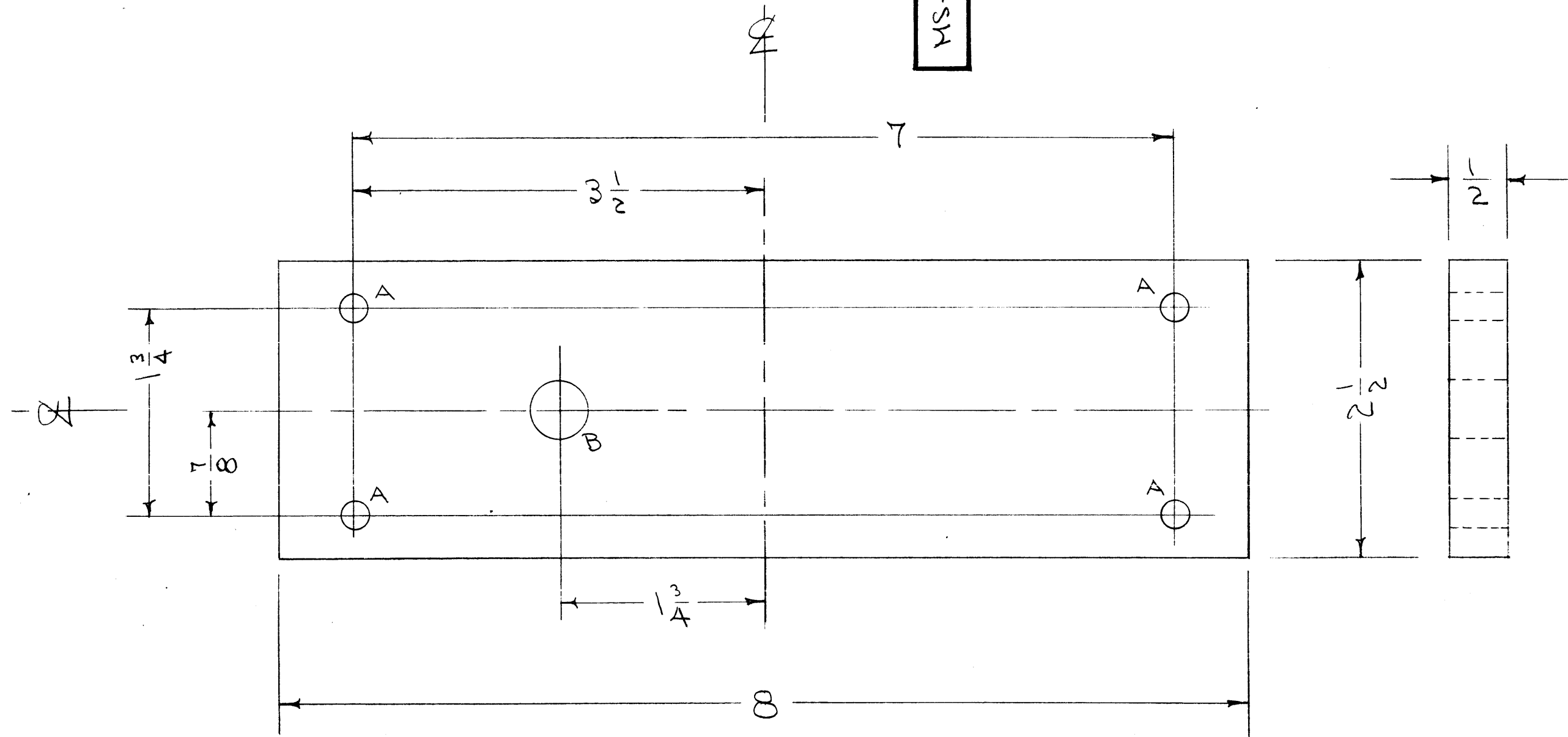
REQ.	ITEM	PART NO.	DESCRIPTION	SYMBOL
		.064	THE TECHNICAL MATERIEL CORP.	
		STOCK SIZE	MAMARONECK, NEW YORK	
		ALUMINUM	PLATE, TRANSFORMER MOUNT	
		MATERIAL	WEIGHT PER PC.	
		52S H32	VRA	
		TYPE & TEMPER	7-27-54	WSE
		HEAT TREAT. SPEC.	DRAWN	ELEC. DES. APP.
			JMB	WSE
			CHECKED	FINAL APPROVAL
				MS-546 C
			S-404 YELLOW IRIDITE	
			FINISH & SPEC. NO.	

IF IT IS FOUND DESIRABLE TO CHANGE ANY TOLERANCE OR OTHER DETAIL SPECIFIED ON THIS DRAWING NOTIFY THE PURCHASER PROMPTLY.

MAXIMUM ALLOWABLE TOLERANCES HAVE BEEN DETERMINED AND DEVIATIONS WILL BE CAUSE FOR REJECTION. REMOVE ALL BURRS AND SHARP EDGES

MS-547 C

A - $\frac{1}{4}$ (.250) DIA. 4 HOLES REQ.
 B - $1\frac{1}{32}$ (.531) DIA. 1 " "



NOTICE TO PERSONS RECEIVING THIS DRAWING
 THE TECHNICAL MATERIEL CORPORATION claims proprietary right in the material disclosed hereon. This drawing is issued in confidence for engineering information only and may not be reproduced or used to manufacture anything shown hereon without permission from THE TECHNICAL MATERIEL CORPORATION to the user. This drawing is loaned for mutual assistance and is subject to recall at any time.
 Property of:
 THE TECHNICAL MATERIEL CORPORATION
 MAMARONECK, NEW YORK

C	1	8 WAS 8 1/4	5/27/57	3	FC: [Signature]	[Signature]	[Signature]
B	1	1 1/32 D WAS 1/2 D	6/13/56	2	[Signature]	[Signature]	[Signature]
A	1	MATERIAL WAS MELAMINE	6/18/55	1	[Signature]	[Signature]	[Signature]
ISSUE	ITEM	CHANGED FROM	DATE	CN. NO.	DRAFTS	CHECKER	ENG. APP.

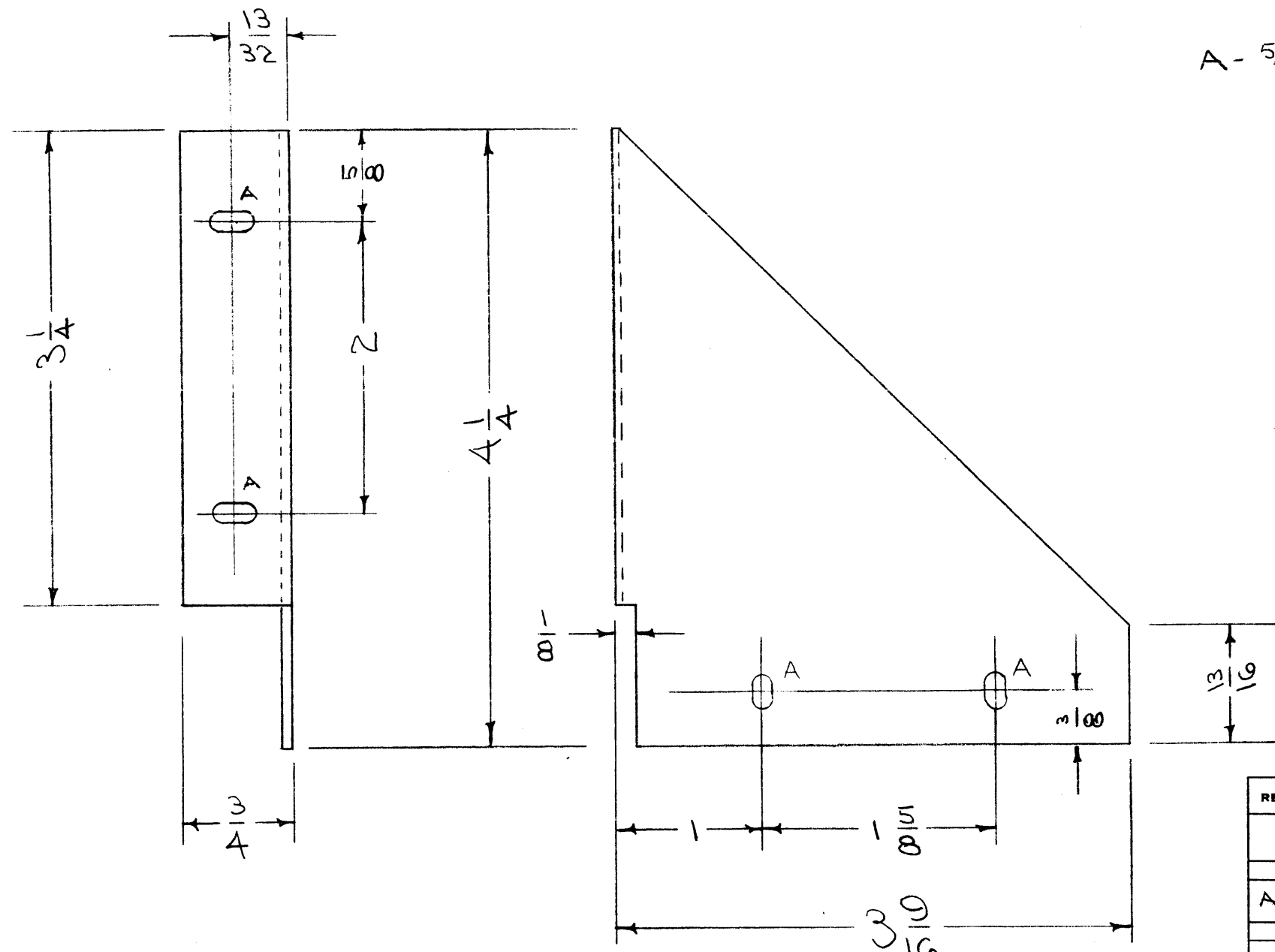
1	VRA-2A			2-28-56
1	VRA-1	259		7-27-54
1	VRA-2	259		7-27-54
REQ. PER UNIT	MODEL	PROJECT NO.	ASS'Y. NO.	DATE

REQ. ITEM	PART NO.	DESCRIPTION	SYMBOL
	1/2 THICK	THE TECHNICAL MATERIEL CORP. MAMARONECK, NEW YORK	
	NATURAL GRADE NYLON LAMITEX	PLATE, MAST SUPPORT	
		VRA	
		C.O.D. 7-27-54	
		DRAWN [Signature]	ELEC. DES. APP. [Signature] MECH. DES. APP. [Signature]
		CHECKED [Signature]	FINAL APPROVAL
			MS-547 C

IF IT IS FOUND DESIRABLE TO CHANGE ANY TOLERANCE OR OTHER DETAIL SPECIFIED ON THIS DRAWING NOTIFY THE PURCHASER PROMPTLY.

MAXIMUM ALLOWABLE TOLERANCES HAVE BEEN DETERMINED AND DEVIATIONS WILL BE CAUSE FOR REJECTION. REMOVE ALL BURRS AND SHARP EDGES

MS-555 B



A - 5/32 X 5/16 SLOTS 4 REQ.

NOTICE TO PERSONS RECEIVING THIS DRAWING
 THE TECHNICAL MATERIEL CORPORATION claims proprietary right in the material disclosed hereon. This drawing is issued in confidence for engineering information only and may not be reproduced or used to manufacture anything shown hereon without permission from THE TECHNICAL MATERIEL CORPORATION to the user. This drawing is loaned for mutual assistance and is subject to recall at any time.

Property of:
 THE TECHNICAL MATERIEL CORPORATION
 MAMARONECK, NEW YORK

B	1	S-404 WAS S-101	12/11/54	1001	AB		EMN
A	1	5/32 X 5/16 SLOTS WERE CHANGED	11/17/54	1	FA	PC	W
ISSUE	ITEM	CHANGED FROM	DATE	CN. NO.	DRAFTS	CHECKER	ENG. APP.

TOLERANCES		SCALE:
ALL OTHERS	DEC. DIM. ± FRAC. DIM. ± 1/64 ANGULAR DIM. ±	DRILL, PUNCH, COMMERCIAL STOCK SIZES AND MANUFACTURERS TOLERANCES ARE NOT INCLUDED.

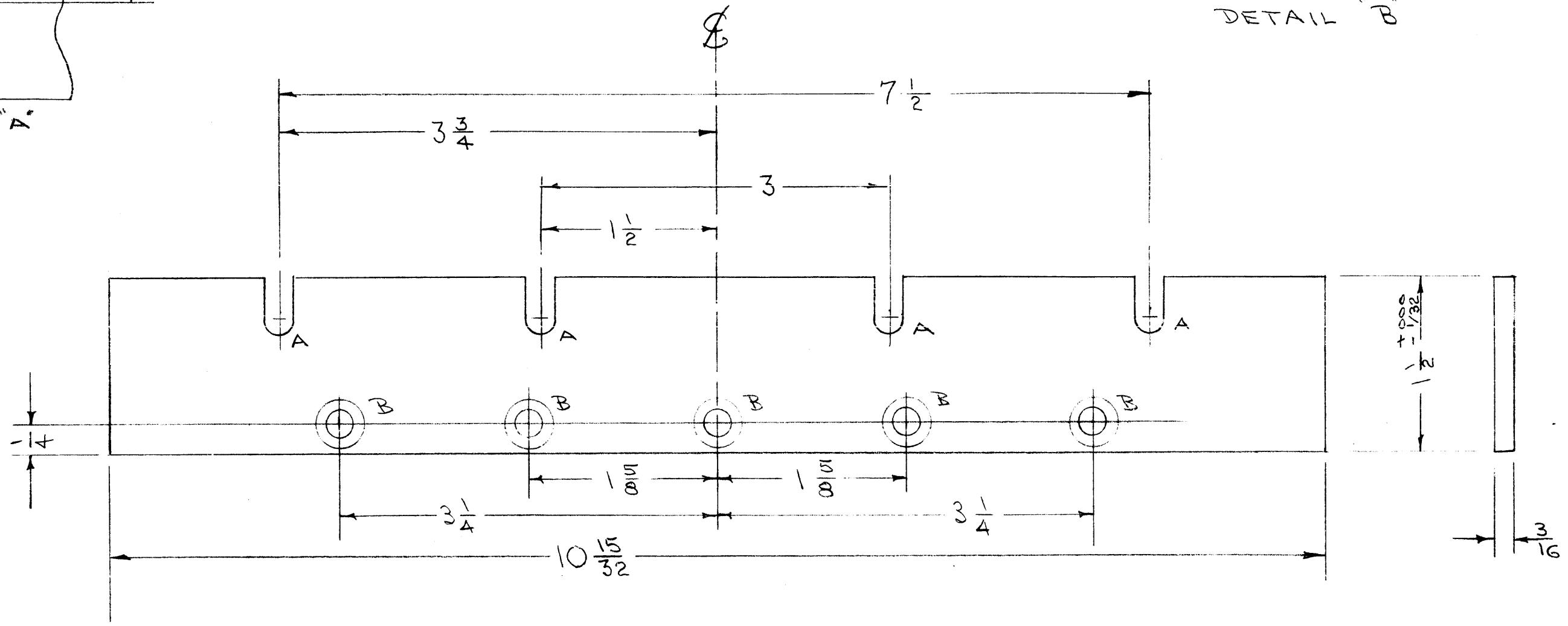
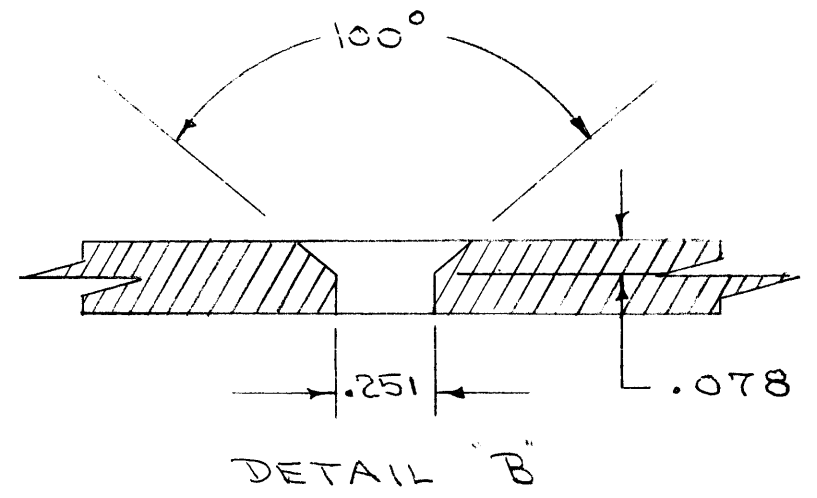
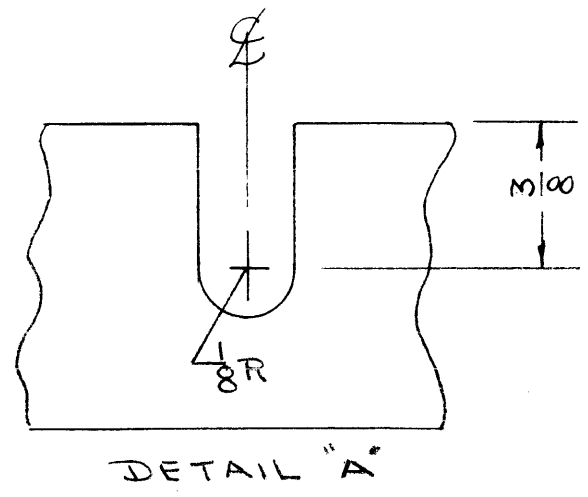
1	PMO-2	285		8-17-54
REQ PER UNIT	MODEL	PROJECT NO.	ASS'Y. NO.	DATE
USED ON				

REQ.	ITEM	PART NO.	DESCRIPTION	SYMBOL
		.064	THE TECHNICAL MATERIEL CORP. MAMARONECK, NEW YORK	
		STOCK SIZE		
		ALUMINUM	SUPPORT, POWER SUPPLY	
		MATERIAL	PMO	
		WEIGHT PER PC.		
		52S-H32		
		TYPE & TEMPER		
		HEAT TREAT. SPEC.		
		S-404 YELLOW IRIDITE		
		FINISH & SPEC. NO.		

CDR 8/17/54
 DRAWN: [Signature]
 ELEC. DES. APP.: [Signature]
 MECH. DES. APP.: [Signature]
 CHECKED: [Signature]
 FINAL APPROVAL: [Signature]
 MS-555 B

IF IT IS FOUND DESIRABLE TO CHANGE ANY TOLERANCE OR OTHER DETAIL SPECIFIED ON THIS DRAWING NOTIFY PURCHASER PROMPTLY.
 MAXIMUM ALLOWABLE TOLERANCES HAVE BEEN DETERMINED AND DEVIATIONS WILL BE CAUSE FOR REJECTION.
 REMOVE ALL BURRS AND SHARP EDGES

MS-556 A



ISSUE	ITEM	CHANGED FROM	DATE	CN. NO.	DRAFTS	CHECKER	ENG. APP.
A	1	"B" HOLES ADDED	10/14	1	C.D.D.	J.A.L.B.	
TOLERANCES			SCALE:				
ALL OTHERS	DEC. DIM. ±	FRAC. DIM. ±	ANGULAR DIM. ±	DRILL, PUNCH, COMMERCIAL STOCK SIZES AND MANUFACTURERS TOLERANCES ARE NOT INCLUDED.			

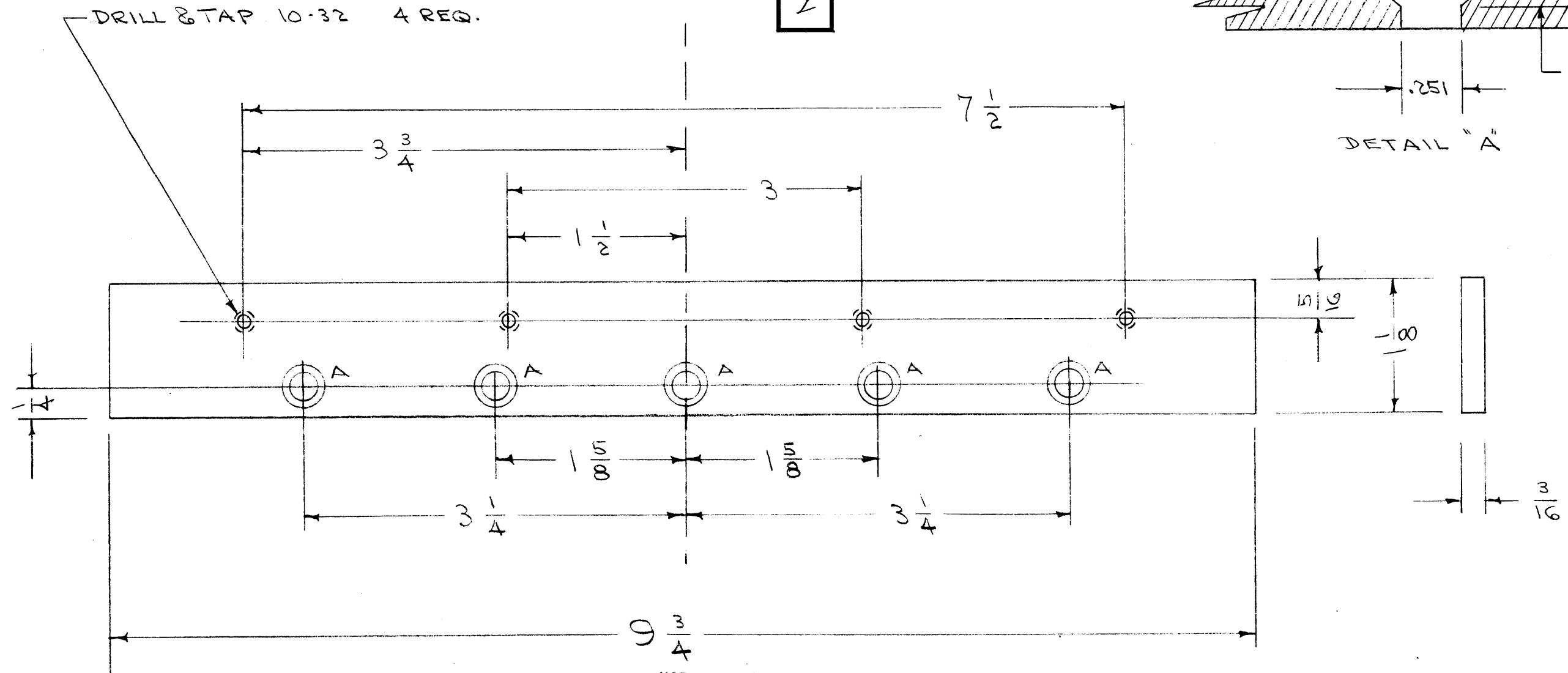
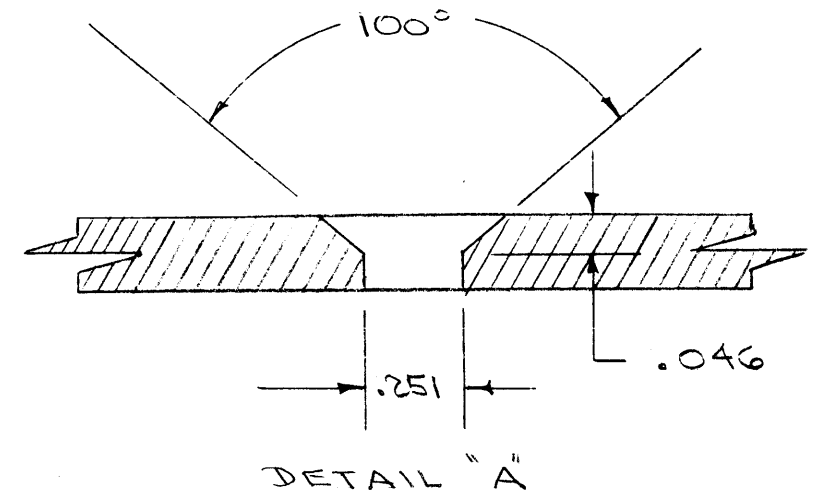
REQ PER UNIT	2	MODEL	A-804	PROJECT NO.	A-804	DATE	8-18-34
USED ON							

REQ. ITEM	PART NO.	DESCRIPTION	SYMBOL
	3/16	THE TECHNICAL MATERIEL CORP.	
	STOCK SIZE	MAMARONECK, NEW YORK	
	ALUMINUM	PANEL, FRONT EXTENSION	
	MATERIAL	PMO	
	24S T3		
	WEIGHT PER PC.		
	TYPE & TEMPER		
	HEAT TREAT. SPEC.		
	FINISH & SPEC. NO.		
		DRAWN	J.A.L.B.
		ELEC. DES. APP.	
		MECH. DES. APP.	W.O.Z.
		CHECKED	M.H.S.
		FINAL APPROVAL	W.O.Z.
		MS-556 A	

IF IT IS FOUND DESIRABLE TO CHANGE ANY TOLERANCE OR OTHER DETAIL SPECIFIED ON THIS DRAWING NOTIFY THE PURCHASER PROMPTLY.

MAXIMUM ALLOWABLE TOLERANCES HAVE BEEN DETERMINED AND DEVIATIONS WILL BE CAUSE FOR REJECTION. REMOVE ALL BURRS AND SHARP EDGES

MS-557 A



NOTICE TO PERSONS RECEIVING THIS DRAWING

THE TECHNICAL MATERIEL CORPORATION claims proprietary right in the material disclosed hereon. This drawing is issued in confidence for engineering information only and may not be reproduced or used to manufacture anything shown hereon without permission from THE TECHNICAL MATERIEL CORPORATION to the user. This drawing is loaned for mutual assistance and is subject to recall at any time.

Property of:
THE TECHNICAL MATERIEL CORPORATION
MAMARONECK, NEW YORK

REQ.	ITEM	PART NO.	DESCRIPTION	SYMBOL
		3/16	THE TECHNICAL MATERIEL CORP. MAMARONECK, NEW YORK	
		STOCK SIZE		
		ALUMINUM	PANEL, REAR EXTENSION	
		MATERIAL	WEIGHT PER PC.	
		24S T3		
		TYPE & TEMPER	CDD 10-19-54	
		HEAT TREAT. SPEC.	DRAWN	ELEC. DES. APP. MECH. DES. APP.
		FINISH & SPEC. NO.	CHECKED	FINAL APPROVAL

ISSUE	ITEM	CHANGED FROM	DATE	CN. NO.	DRAFTS	CHECKER	ENG. APP.
A	2	COMPLETE REVISION	10/19/54	1	CDD	JAW	
	1	REDRAWN					

ALL OTHERS	DEC. DIM. ± FRAC. DIM. ± ANGULAR DIM. ±	DRILL, PUNCH, COMMERCIAL STOCK SIZES AND MANUFACTURERS TOLERANCES ARE NOT INCLUDED.
------------	---	---

2	A-804	PROJECT NO.	ASS'Y. NO.	DATE
REQ. PER UNIT	MODEL			10-19-54
USED ON				

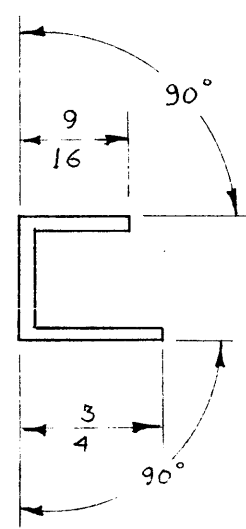
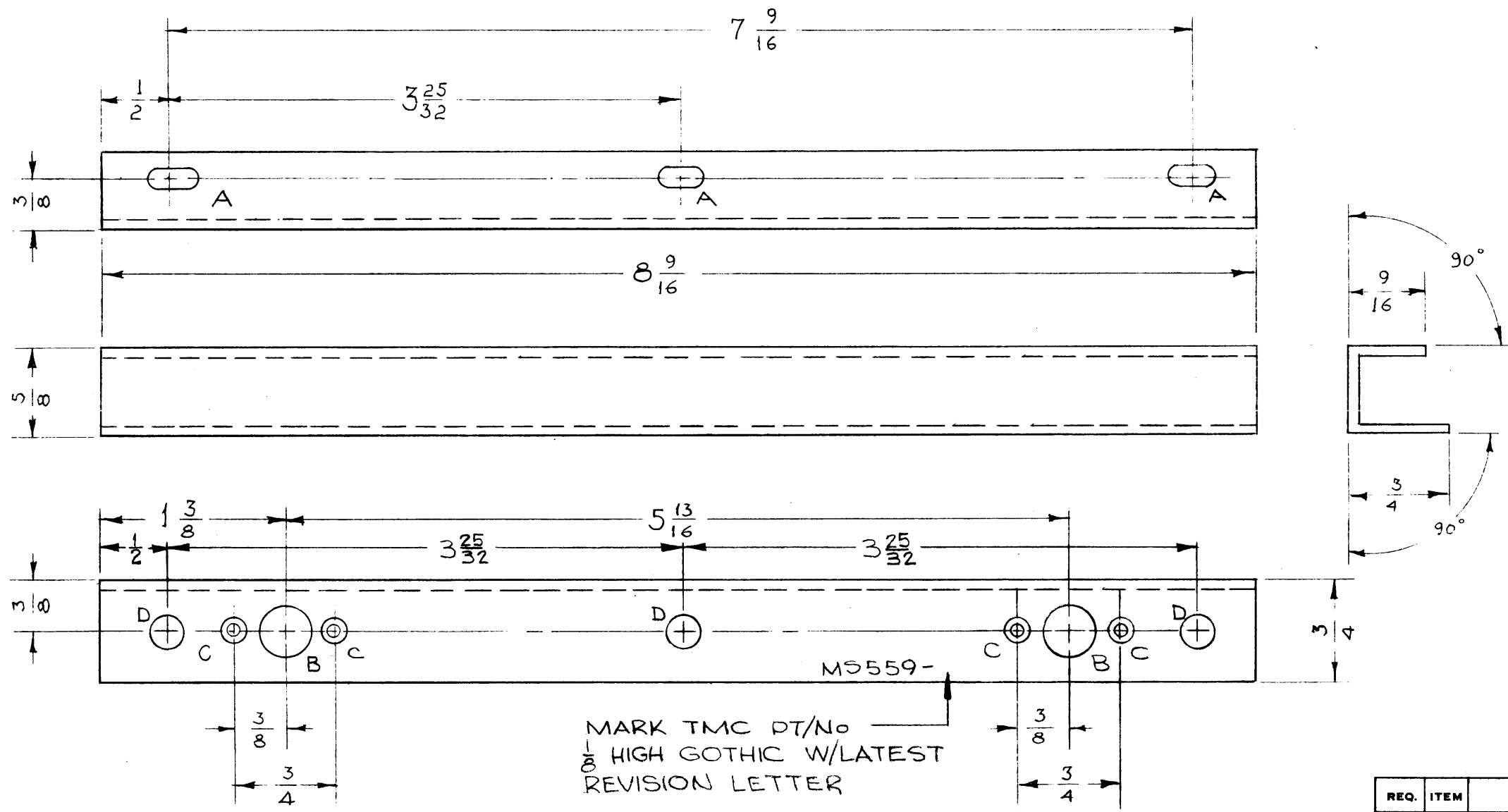
MS-557 A

IF IT IS FOUND DESIRABLE TO CHANGE ANY TOLERANCE OR OTHER DETAIL SPECIFIED ON THIS DRAWING NOTIFY THE PURCHASER PROMPTLY.

MAXIMUM ALLOWABLE TOLERANCES HAVE BEEN DETERMINED AND DEVIATIONS WILL BE CAUSE FOR REJECTION. REMOVE ALL BURRS AND SHARP EDGES

MS559 \emptyset

- A - 5/32 x 5/16 SLOTS 3 REQ'D.
- B - 3/8 (.375) D. 2 HOLES
- C - DRILL & C'SINK FOR #3 F.H.S. 4 HOLES
- D - 1/4 (.250) DIA. 3 REQ'D



REQ. ITEM	PART NO.	DESCRIPTION	SYMBOL
.064		THE TECHNICAL MATERIEL CORP.	
STOCK SIZE		MAMARONECK. NEW YORK	
ALUMINUM		COVER SUPPORT	
MATERIAL	WEIGHT PER PC.	PMO	
525 - H 32			
TYPE & TEMPER			
		DRAWN	ELEC. DES. APP. MECH. DES. APP.
		CHECKED	FINAL APPROVAL
HEAT TREAT. SPEC.			
S-404 YELLOW IRIDITE			
FINISH & SPEC. NO.			

ISSUE	ITEM	CHANGED FROM	DATE	CN. NO.	DRAFTS	CHECKER	ENG. APP.
\emptyset		ORIGINAL RELEASE FOR PRODUCTION	12.12.66	\emptyset	RME		
X		BUILD-UP REMOVED DWG. NO. WAS A861	9.19.66	#	WFO		

TOLERANCES	SCALE:
DEC. DIM. \pm FRAC. DIM. \pm 1/64 ANGULAR DIM. \pm	DRILL, PUNCH, COMMERCIAL STOCK SIZES AND MANUFACTURERS TOLERANCES ARE NOT INCLUDED.

2	PMO - 1/2	285	A861	9.19.66
REQ. PER UNIT	MODEL	PROJECT NO.	ASS'Y. NO.	DATE

USED ON

IF IT IS FOUND DESIRABLE TO CHANGE ANY TOLERANCE OR OTHER DETAIL SPECIFIED ON THIS DRAWING NOTIFY THE PURCHASER PROMPTLY.

MAXIMUM ALLOWABLE TOLERANCES HAVE BEEN DETERMINED AND DEVIATIONS WILL BE CAUSE FOR REJECTION. REMOVE ALL BURRS AND SHARP EDGES

MS-563 B

$-\frac{1}{4}$ (.250) 6 HOLES REQ

$\frac{3}{32}$ NICK ALL CORNERS

A - $\frac{1}{8}$ (.125) D. 1 HOLE REQ.

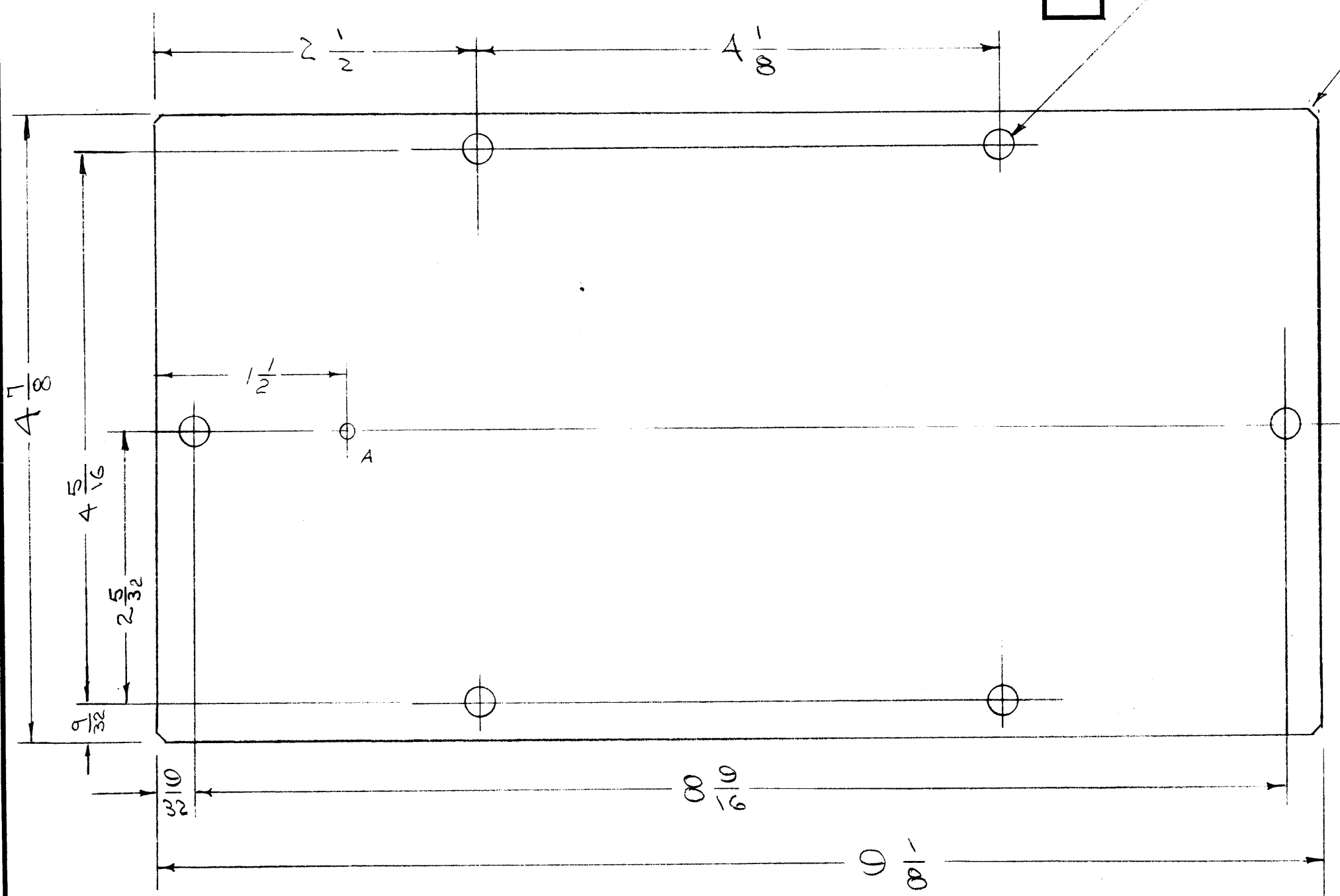
NOTICE TO PERSONS RECEIVING THIS DRAWING

THE TECHNICAL MATERIEL CORPORATION claims proprietary right in the material disclosed hereon. This drawing is issued in confidence for engineering information only and may not be reproduced or used to manufacture anything shown hereon without permission from THE TECHNICAL MATERIEL CORPORATION to the user. This drawing is loaned for mutual assistance and is subject to recall at any time.

Property of:

THE TECHNICAL MATERIEL CORPORATION
MAMARONECK, NEW YORK

- NOTE - FINISH
 S-404 YELLOW IRIDITE
 S-105 ZINC CHROMATE PRIMER
 S-115 SMOOTH GREY ENAMEL



REQ.	ITEM	PART NO.	DESCRIPTION	SYMBOL
		.081	THE TECHNICAL MATERIEL CORP.	
		STOCK SIZE	MAMARONECK, NEW YORK	
	ALUMINUM	#	DOOR, REAR	
	MATERIAL	WEIGHT PER PC.	C. P. M O	
		52S-H 32	CDD. 9-21-54	
		TYPE & TEMPER	DRAWN	ELEC. DES. APP.
		#	MECH. DES. APP.	
		HEAT TREAT. SPEC.	CHECKED	FINAL APPROVAL
		SEE NOTE		
		FINISH & SPEC. NO.	MS-563	B

ISSUE	ITEM	CHANGED FROM	DATE	CN. NO.	DRAFTS	CHECKER	ENG. APP.
B	1	S-404 WAS S-101	12/11/59	1001	AB		EMM
A	1	1/8 HOLE ADDED	11-18-54	1	RB	FAID	WJR

TOLERANCES		SCALE:
ALL OTHERS	DEC. DIM. \pm FRAC. DIM. $\pm \frac{1}{64}$ ANGULAR DIM. \pm	DRILL, PUNCH, COMMERCIAL STOCK SIZES AND MANUFACTURERS TOLERANCES ARE NOT INCLUDED.

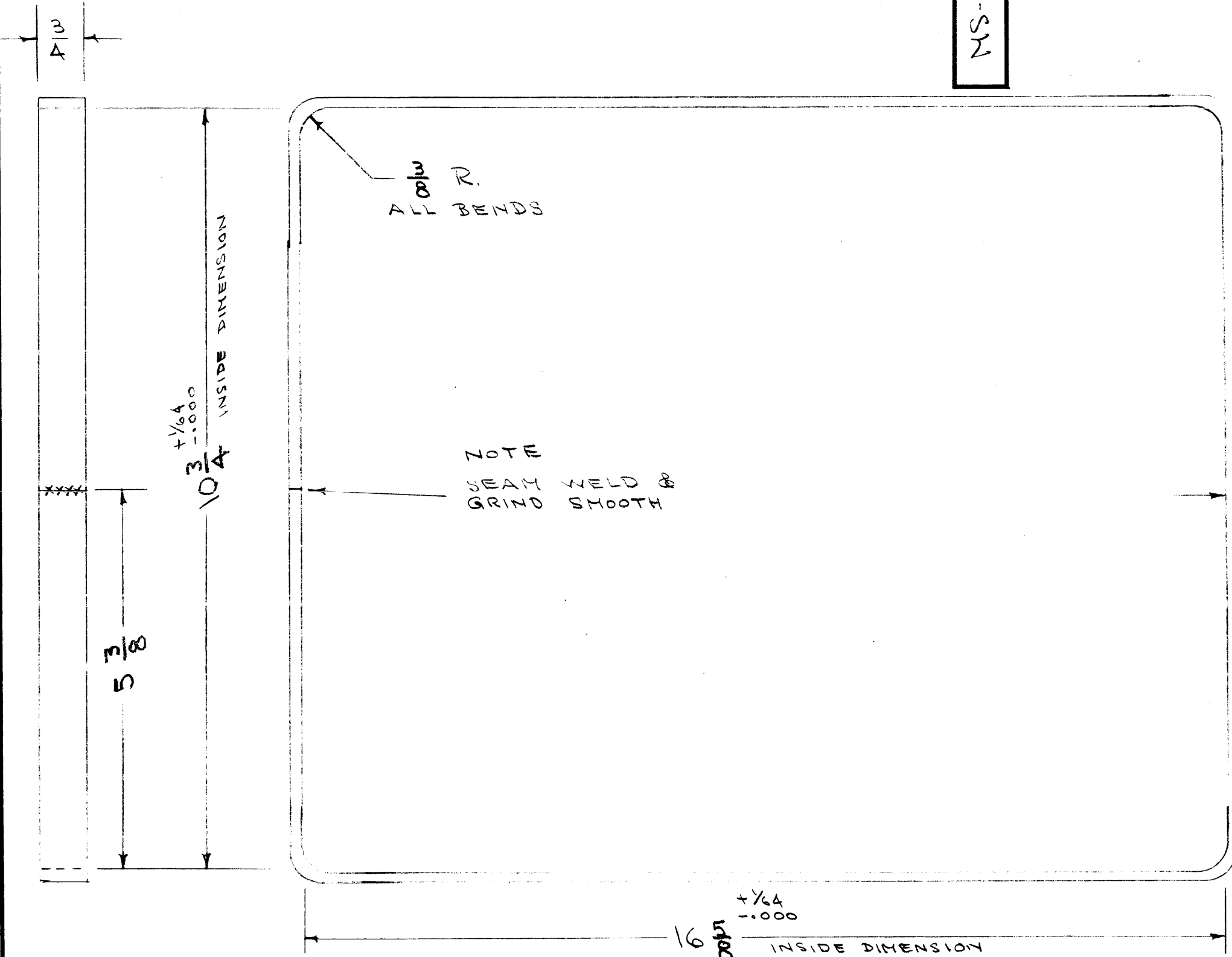
UNIT	MODEL	PROJECT NO.	ASS'Y. NO.	DATE
1	CPMO			9-21-54

USED ON

IF IT IS FOUND DESIRABLE TO CHANGE ANY TOLERANCE OR OTHER DETAIL SPECIFIED ON THIS DRAWING NOTIFY THE PURCHASER PROMPTLY.

MAXIMUM ALLOWABLE TOLERANCES HAVE BEEN DETERMINED AND DEVIATIONS WILL BE CAUSE FOR REJECTION. REMOVE ALL BURRS AND SHARP EDGES

MS-565



NOTICE TO PERSONS RECEIVING THIS DRAWING

THE TECHNICAL MATERIEL CORPORATION claims proprietary right in the material disclosed hereon. This drawing is issued in confidence for engineering information only and may not be reproduced or used to manufacture anything shown hereon without permission from THE TECHNICAL MATERIEL CORPORATION to the user. This drawing is loaned for mutual assistance and is subject to recall at any time.

Property of:
THE TECHNICAL MATERIEL CORPORATION
MAMARONECK, NEW YORK

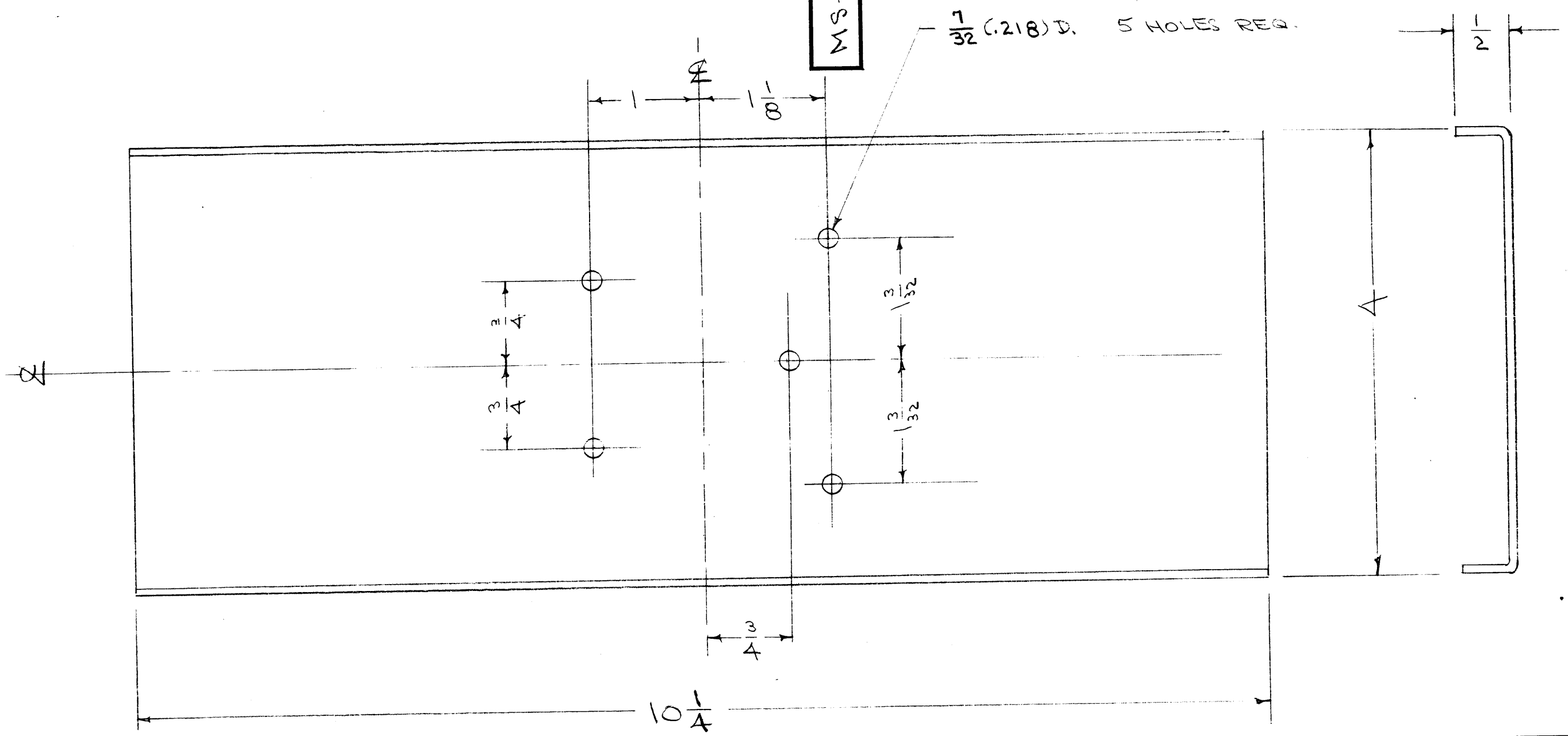
REQ.	ITEM	PART NO.	DESCRIPTION	SYMBOL
		3/16 THK.	THE TECHNICAL MATERIEL CORP.	
		STOCK SIZE	MAMARONECK, NEW YORK	
		ALUMINUM	FRONT RING	
		MATERIAL	C. P. M. O.	
		2S H14	C.D.D. 9-22-54	
		TYPE & TEMPER	DRAWN	MECH. DES. APP.
		HEAT TREAT. SPEC.	CHECKED	FINAL APPROVAL
		FINISH & SPEC. NO.		

ISSUE	ITEM	CHANGED FROM	DATE	CN. NO.	DRAFTS	CHECKER	ENG. APP.
TOLERANCES		SCALE:					
ALL OTHERS	DEC. DIM. ± FRAC. DIM. ± ANGULAR DIM. ±	DRILL, PUNCH, COMMERCIAL STOCK SIZES AND MANUFACTURERS TOLERANCES ARE NOT INCLUDED.					
		1	C.P.M.O.	285			9-22-54
		REQ PER UNIT	MODEL	PROJECT NO.	ASS'Y. NO.		DATE

IF IT IS FOUND DESIRABLE TO CHANGE ANY TOLERANCE OR OTHER DETAIL SPECIFIED ON THIS DRAWING NOTIFY THE PURCHASER PROMPTLY.

MAXIMUM ALLOWABLE TOLERANCES HAVE BEEN DETERMINED AND DEVIATIONS WILL BE CAUSE FOR REJECTION. REMOVE ALL BURRS AND SHARP EDGES

MS-566 A



$\frac{1}{32}$ (.218) D. 5 HOLES REQ.

REQ.	ITEM	PART NO.	DESCRIPTION	SYMBOL
		.081	THE TECHNICAL MATERIEL CORP. MAMARONECK. NEW YORK	
		ALUMINUM	PLATE, REINFORCING	
		52S-H32	C.P.M.O.	
		TYPE & TEMPER	ADD. 9/22/54	
		HEAT TREAT. SPEC.	DRAWN	ELEC. DES. APP. MECH. DES. APP.
		S-404 YELLOW IRIDITE	CHECKED	FINAL APPROVAL
		FINISH & SPEC. NO.		MS-566 A

ISSUE	ITEM	CHANGED FROM	DATE	CN. NO.	DRAFTS	CHECKER	ENG. APP.
A	1	S-404 WAS S-101	12/11/54	1001	AB		EMN

TOLERANCES

SCALE:

DEC. DIM. \pm
FRAC. DIM. \pm $\frac{1}{64}$
ANGULAR DIM. \pm

DRILL, PUNCH, COMMERCIAL STOCK SIZES AND MANUFACTURERS TOLERANCES ARE NOT INCLUDED.

REQ. PER UNIT	MODEL	PROJECT NO.	ASS'Y. NO.	DATE
1	C.P.M.O.	285		9-22-54

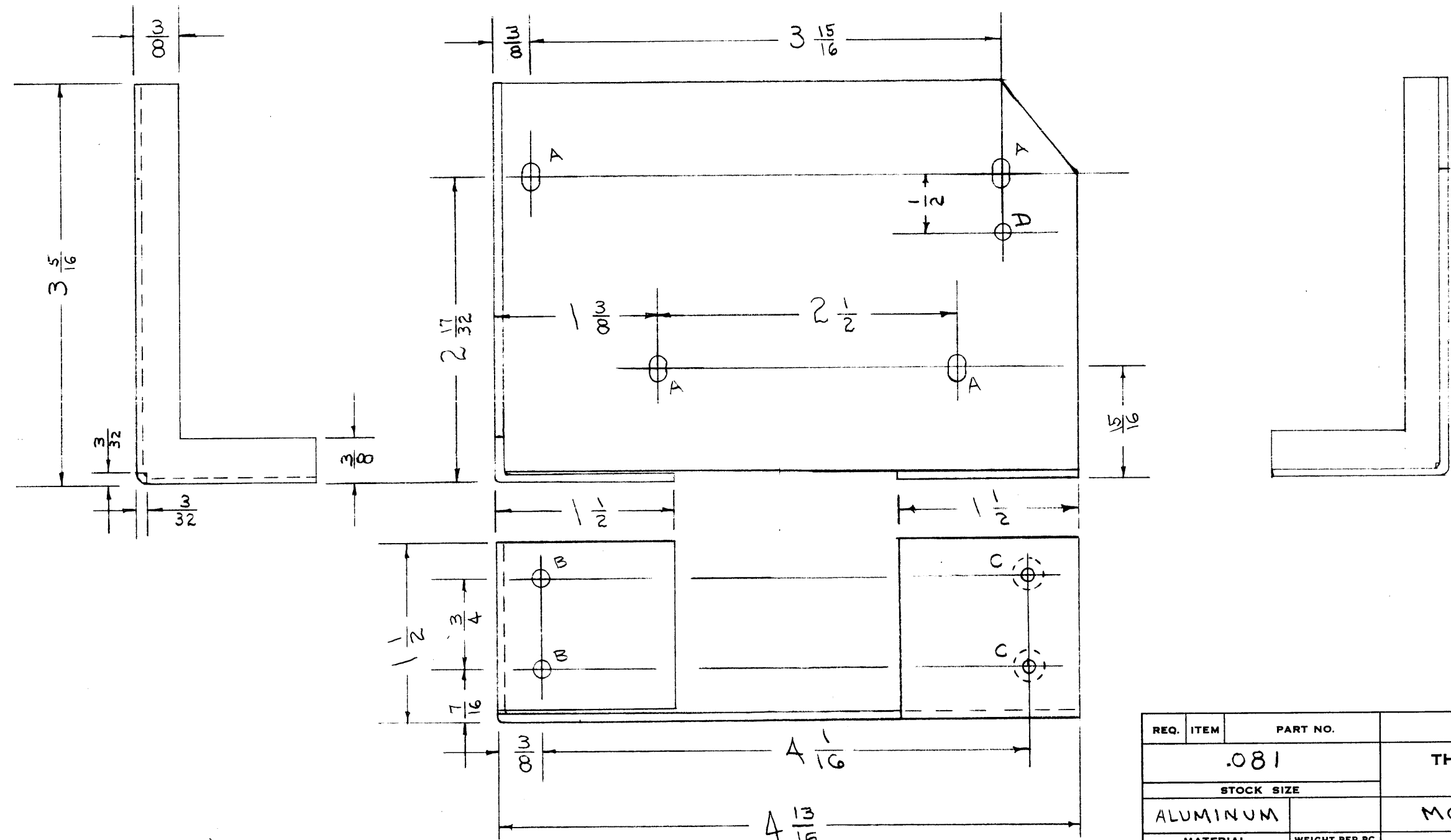
USED ON

IF IT IS FOUND DESIRABLE TO CHANGE ANY TOLERANCE OR OTHER DETAIL SPECIFIED ON THIS DRAWING NOTIFY THE PURCHASER PROMPTLY.

MAXIMUM ALLOWABLE TOLERANCES HAVE BEEN DETERMINED AND DEVIATIONS WILL BE CAUSE FOR REJECTION. REMOVE ALL BURRS AND SHARP EDGES

MS-573 B

A- $\frac{5}{32} \times \frac{5}{16}$ SLOTS A REQ.
 B- $\frac{5}{32}$ (.156)D. 2 "
 C-DRILL & C'SINK FOR 6-32 F.H.S. 2 "
 D- $\frac{1}{8}$ (.125)D. 1 "



NOTICE TO PERSONS RECEIVING THIS DRAWING
 THE TECHNICAL MATERIEL CORPORATION claims proprietary right in the material disclosed hereon. This drawing is issued in confidence for engineering information only and may not be reproduced or used to manufacture anything shown hereon without permission from THE TECHNICAL MATERIEL CORPORATION to the user. This drawing is loaned for mutual assistance and is subject to recall at any time.

Property of:
 THE TECHNICAL MATERIEL CORPORATION
 MAMARONECK, NEW YORK

B	1	S-404 WAS S-101	12/11/59	1001	AB		EMN
A	2	3/8 WAS 5/16	4/26/57	1	SC.		
	1	4 13/16 WAS 4 7/8					
ISSUE	ITEM	CHANGED FROM	DATE	CN. NO.	DRAFTS	CHECKER	ENG. APP.
TOLERANCES		SCALE:					
ALL OTHERS	DEC. DIM. ±	DRILL, PUNCH, COMMERCIAL STOCK SIZES AND MANUFACTURERS TOLERANCES ARE NOT INCLUDED.					
	FRAC. DIM. ± 1/64						
	ANGULAR DIM. ±						

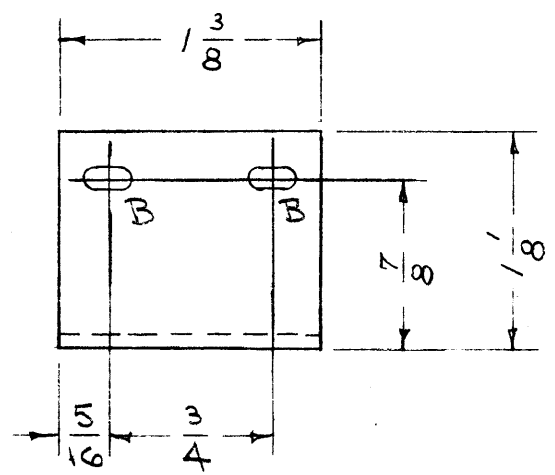
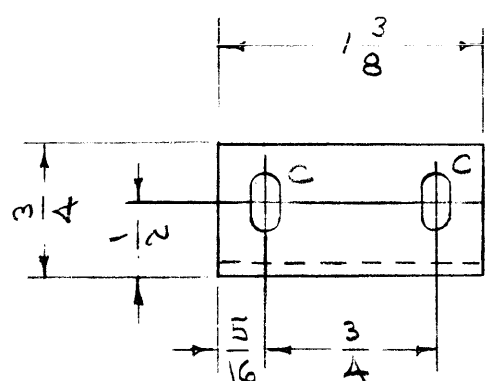
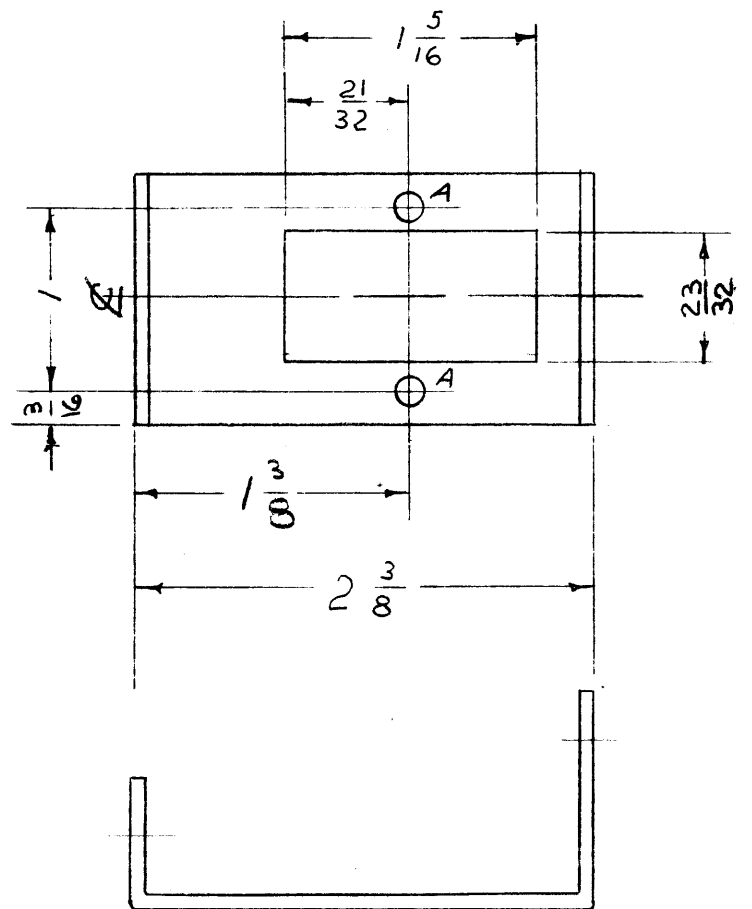
3	RSC-2(A,B,C,D,E)	170	10-4-54
REQ. PER UNIT	MODEL	PROJECT NO.	ASS'Y. NO.
			DATE
USED ON			

REQ.	ITEM	PART NO.	DESCRIPTION	SYMBOL
		.081	THE TECHNICAL MATERIEL CORP.	
		STOCK SIZE	MAMARONECK, NEW YORK	
		ALUMINUM	MOUNTING BRACKET,	
		MATERIAL	CONDENSER	RSC-2
		525 H32	M.H.S. 11-4-54	
		TYPE & TEMPER	KZ	11/15/54
			DRAWN	ELEC. DES. APP.
			MECH. DES. APP.	
			checked "4/15"	A. J. J.
			CHECKED	FINAL APPROVAL
		HEAT TREAT. SPEC.	SUPERCEDES	
		S-404 YELLOW IRIDITE	ENG. 2-529	
		FINISH & SPEC. NO.	MS-573B	

IF IT IS FOUND DESIRABLE TO CHANGE ANY TOLERANCE OR OTHER DETAIL SPECIFIED ON THIS DRAWING NOTIFY THE PURCHASER PROMPTLY.

MAXIMUM ALLOWABLE TOLERANCES HAVE BEEN DETERMINED AND DEVIATIONS WILL BE CAUSE FOR REJECTION. REMOVE ALL BURRS AND SHARP EDGES

MS-578 B



ALL BENDS 90°
 A = 9/64 (.140) D 2 HOLES REQ.
 B = 1/8 x 1/4 SLOT 2 SLOTS "
 C = 5/32 x 5/16 " 2 " "

NOTICE TO PERSONS RECEIVING THIS DRAWING

THE TECHNICAL MATERIEL CORPORATION claims proprietary right in the material disclosed hereon. This drawing is issued in confidence for engineering information only and may not be reproduced or used to manufacture anything shown hereon without permission from THE TECHNICAL MATERIEL CORPORATION to the user. This drawing is loaned for mutual assistance and is subject to recall at any time.

Property of:
 THE TECHNICAL MATERIEL CORPORATION
 MAMARONECK, NEW YORK

B	1	S-404 WAS S-101	12/11/54	1001	RS	EMN	
A	1	23/32 WAS 11/16	1-6-56	1	RS	WJC	
ISSUE	ITEM	CHANGED FROM	DATE	CN. NO.	DRAFTS	CHECKER	ENG. APP.

TOLERANCES		SCALE: 11
ALL OTHERS	DEC. DIM. ± FRAC. DIM. ± 1/64 ANGULAR DIM. ± 2°	DRILL, PUNCH, COMMERCIAL STOCK SIZES AND MANUFACTURERS TOLERANCES ARE NOT INCLUDED.

1	RSC-2(ABCDE)	170	11-5-54
QTY. PER UNIT	MODEL	PROJECT NO.	ASS'Y. NO.
			DATE

REQ. ITEM	PART NO.	DESCRIPTION	SYMBOL
	.064	THE TECHNICAL MATERIEL CORP.	
	STOCK SIZE	MAMARONECK, NEW YORK	
ALUMINUM	#	BRACKET - PLUG	
MATERIAL	WEIGHT PER PC.		
525-H32		RSC-2	
TYPE & TEMPER		P.B. 11-5-54	KZ
		EM - 11/15/54	
		DRAWN	ELEC. DES. APP.
		WJC	A.T.J.
HEAT TREAT. SPEC.		CHECKED	FINAL APPROVAL
S-404 YELLOW IRIDITE			
FINISH & SPEC. NO.			

MS-578 B

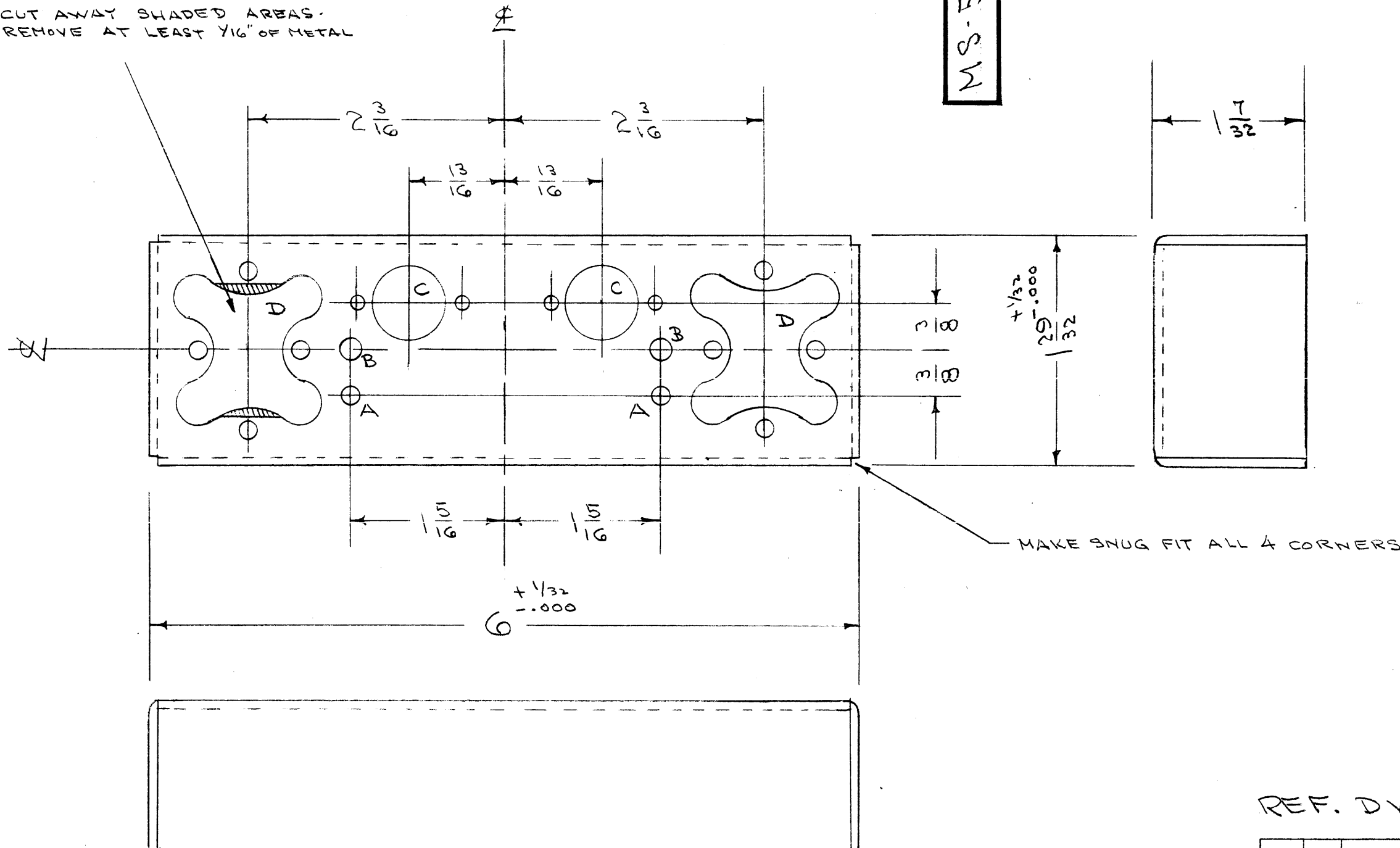
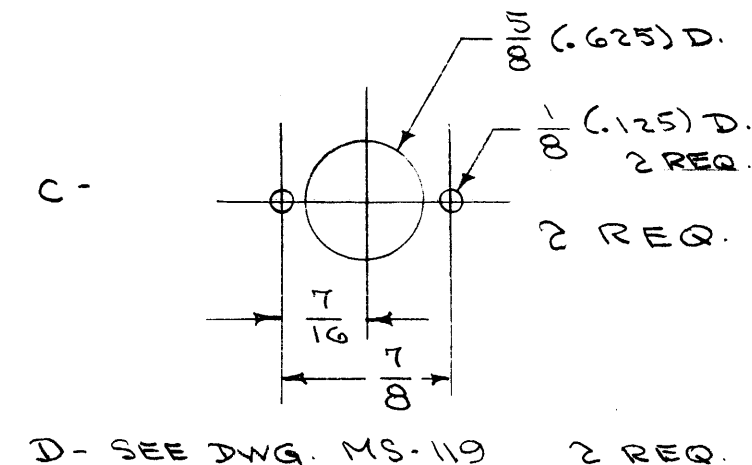
IF IT IS FOUND DESIRABLE TO CHANGE ANY TOLERANCE OR OTHER DETAIL SPECIFIED ON THIS DRAWING NOTIFY THE PURCHASER PROMPTLY.

MAXIMUM ALLOWABLE TOLERANCES HAVE BEEN DETERMINED AND DEVIATIONS WILL BE CAUSE FOR REJECTION. REMOVE ALL BURRS AND SHARP EDGES

CUT AWAY SHADED AREAS - REMOVE AT LEAST 1/16" OF METAL

MS-593 C

A - 5/32 (.156) D. 2 HOLES
 B - 3/16 (.187) D. 2 "



NOTICE TO PERSONS RECEIVING THIS DRAWING
 THE TECHNICAL MATERIEL CORPORATION claims proprietary right in the material disclosed hereon. This drawing is issued in confidence for engineering information only and may not be reproduced or used to manufacture anything shown hereon without permission from THE TECHNICAL MATERIEL CORPORATION to the user. This drawing is loaned for mutual assistance and is subject to recall at any time.
 Property of:
THE TECHNICAL MATERIEL CORPORATION
 MAMARONECK, NEW YORK

REF. DWG. MS-624, LD-311

C	1	S-404 WAS S-101	12/11/53	1001	AB	EMN	
B	1	TYPE OF CORNER CHANGED	7/18/55	1	WJC	WJC	
A	1	"D" DETAIL ADDED	6/15/55	1	WJC	WJC	
ISSUE	ITEM	CHANGED FROM	DATE	CN. NO.	DRAFTS	CHECKER	ENG. APP.

TOLERANCES		SCALE:	
ALL OTHERS	DEC. DIM. ± FRAC. DIM. ± 1/64 ANGULAR DIM. ±	DRILL, PUNCH, COMMERCIAL STOCK SIZES AND MANUFACTURERS TOLERANCES ARE NOT INCLUDED.	

1	GPR	297	3-29-55
REQ. PER UNIT	MODEL	PROJECT NO.	DATE

REQ.	ITEM	PART NO.	DESCRIPTION	SYMBOL
		.064	THE TECHNICAL MATERIEL CORP., MAMARONECK, NEW YORK	
		ALUMINUM	CHASSIS	
		52S H32	2nd CONVERTER	GPR
			COO. 3-29-55	WJC
			DRAWN	ELEC. DES. APP.
			HEAT TREAT. SPEC.	MECH. DES. APP.
			CHECKED	FINAL APPROVAL
				MS-593 C

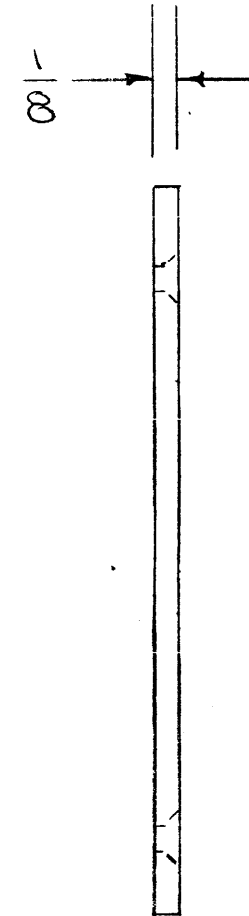
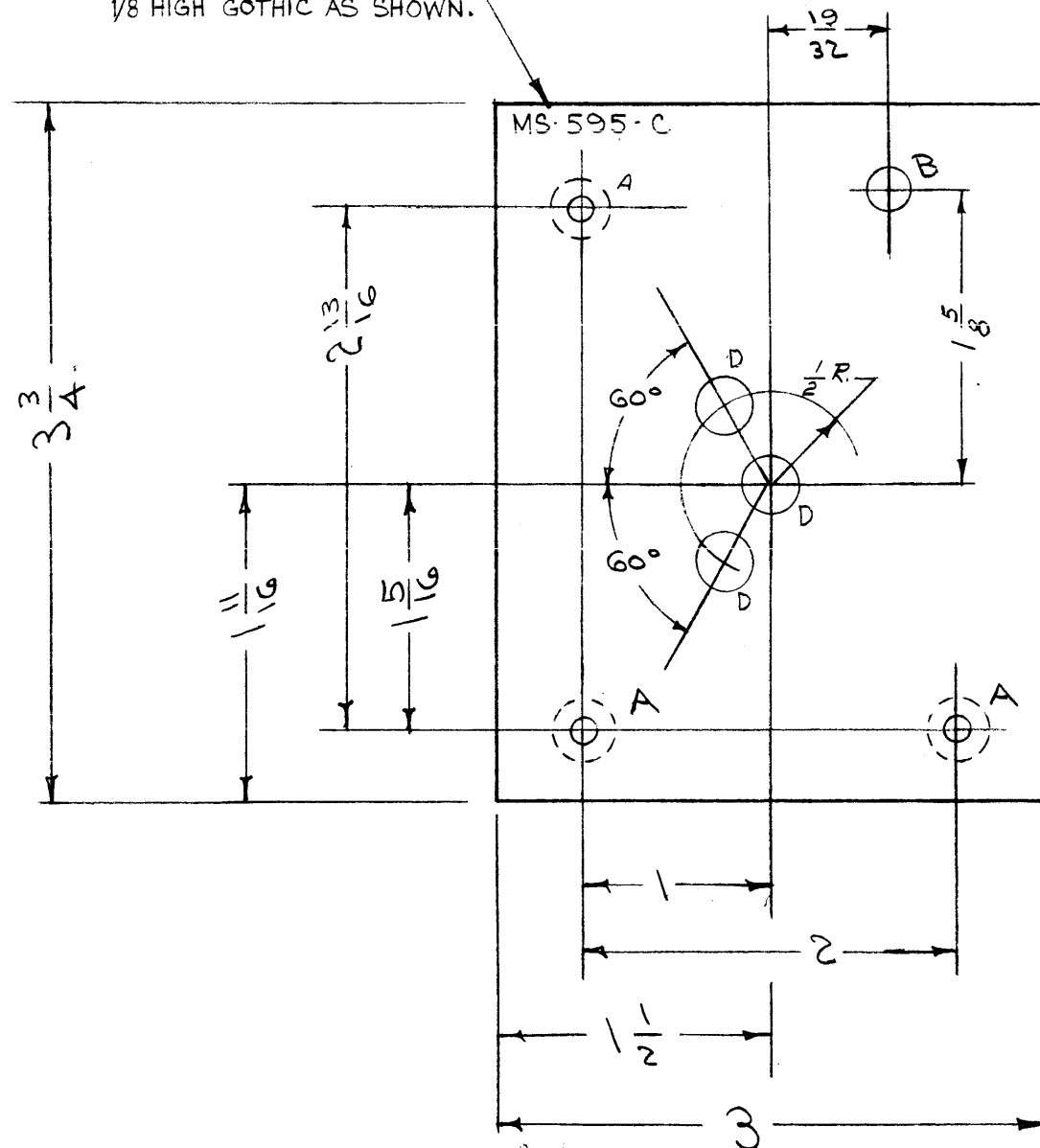
IF IT IS FOUND DESIRABLE TO CHANGE ANY TOLERANCE OR OTHER DETAIL SPECIFIED ON THIS DRAWING NOTIFY THE PURCHASER PROMPTLY.

MAXIMUM ALLOWABLE TOLERANCES HAVE BEEN DETERMINED AND DEVIATIONS WILL BE CAUSE FOR REJECTION. REMOVE ALL BURRS AND SHARP EDGES

MS-595 C

- A- DRILL & C'SINK (FROM REAR) FOR 8-32 F.H.S. 3 REQ.
- B- 1/4 (.250) D. 1 "
- C- DELETED
- D- 5/16 (.312) D. 3 REQ.

METAL STAMP TMC PART NO. 1/8 HIGH GOTHIC AS SHOWN.



NOTE: HOLES RELATED TO THOSE ON DWG. A-913 ARE TO BE JIG DRILLED.

NOTICE TO PERSONS RECEIVING THIS DRAWING
 THE TECHNICAL MATERIEL CORPORATION claims proprietary right in the material disclosed hereon. This drawing is issued in confidence for engineering information only and may not be reproduced or used to manufacture anything shown hereon without permission from THE TECHNICAL MATERIEL CORPORATION to the user. This drawing is loaned for mutual assistance and is subject to recall at any time.

Property of:
 THE TECHNICAL MATERIEL CORPORATION
 MAMARONECK, NEW YORK

ISSUE	ITEM	CHANGED FROM	DATE	CN. NO.	DRAFTS	CHECKER	ENG. APP.
C	1	DWG No. WAS A-914	6-27-62	6470	W.A.F.	<i>[Signature]</i>	
B	3	S-404 WAS S-101	12/10/59	1001	AB	<i>[Signature]</i>	EMN
	2	ITEM 2 WAS BB-10B					
A	1	ONE "D" HOLE WAS "C" HOLE	3/15/55	1	P.B.	<i>[Signature]</i>	<i>[Signature]</i>
	2	"D" WAS 1 REQ.					
	1	NOTCH REMOVED					

TOLERANCES	SCALE:
ALL OTHERS DEC. DIM. ± FRAC. DIM. ± 1/64 ANGULAR DIM. ± 1°	DRILL, PUNCH, COMMERCIAL STOCK SIZES AND MANUFACTURERS TOLERANCES ARE NOT INCLUDED.

REQ. PER UNIT	MODEL	PROJECT NO.	ASS'Y. NO.	DATE
1	VOX-3,4,5,6			6-27-62
1	VOX-1:2	291		1-12-55

REQ. ITEM	PART NO.	DESCRIPTION	SYMBOL
	1/8 THK	THE TECHNICAL MATERIEL CORP. MAMARONECK, NEW YORK	
	ALUMINUM	REAR, MOUNT	
	2AS-T3	(VOX)	
		TYPE & TEMPER	
		HEAT TREAT. SPEC.	
		FINISH & SPEC. NO.	

DATE	DRAWN	ELEC. DES. APP.	MECH. DES. APP.
1-12-55	<i>[Signature]</i>		<i>[Signature]</i>
	CHECKED	FINAL APPROVAL	
		MS-595 C	