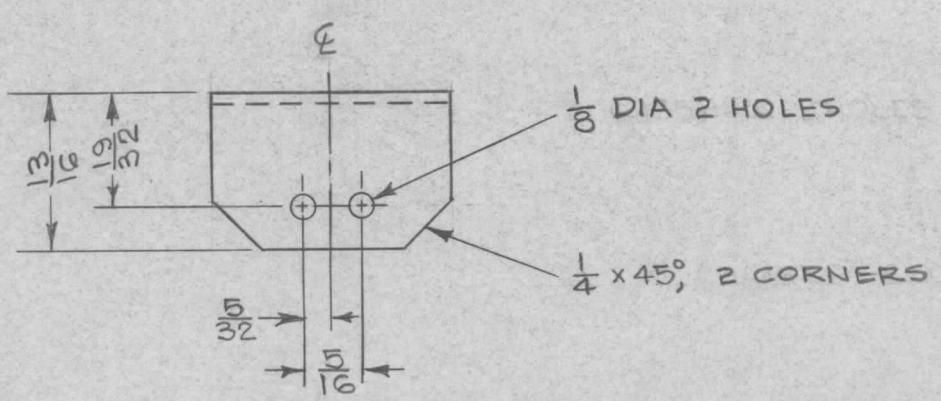
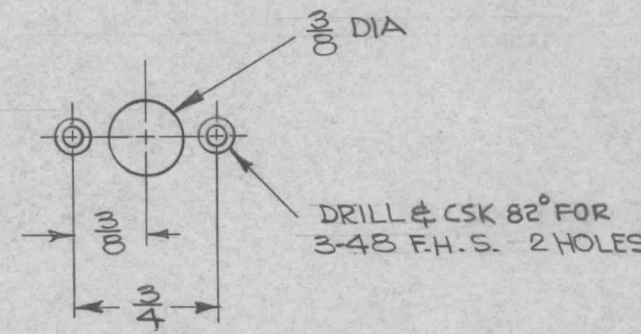
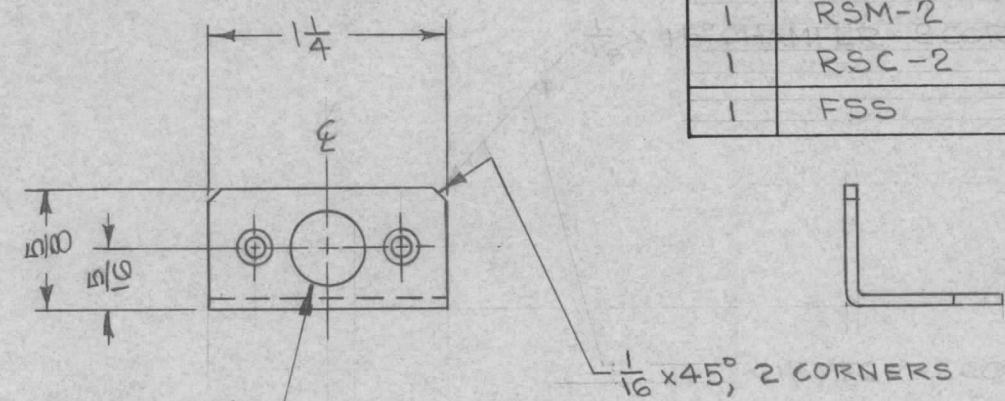


THE CONTENTS OF THIS DRAWING ARE THE EXCLUSIVE PROPERTY OF THE TECHNICAL MATERIEL CORP. ITS UNAUTHORIZED USE FOR REPRODUCTION IN WHOLE OR IN PART IS STRICTLY FORBIDDEN.

REQ. PER UNIT	USED ON		
	MODEL	ASS'Y. NO.	DATE
1	RSA-2		9-23-54
1	RSD-2		10-29-54
1	RSM-2		10-29-54
1	RSC-2		11-23-54
1	FSS		9-1-55

MS-568 D



- NOTES:
1. REMOVE ALL BURRS & SHARP EDGES.
 2. USE MATERIAL THICKNESS FOR MAX RADIUS.
 3. ANGULAR BEND 90°.

UNLESS OTHERWISE SPECIFIED DIMENSIONS ARE IN INCHES AND INCLUDE CHEMICALLY APPLIED OR PLATED FINISHES

DECIMALS	FRACTIONS
.X ± .05	± 1/64
.XX ± .01	ANGLES
.XXX ± .005	± 0° 30'

TOLERANCES

REQ.	ITEM	PART NO.	DESCRIPTION			SYMBOL
		.064 THK	THE TECHNICAL MATERIEL CORP.			
		STOCK SIZE	MAMARONECK, NEW YORK			
		ALUMINUM	BRACKET			
		MATERIAL	COVER			
D	REDRAWN-NO CHANGE WAS P/O A-835	610-63 9212	Ⓢ	JAG	6.11-63	
SYM	DESCRIPTION	DATE	CH. NO.	DRAFTS	CHECKER	ENG. APP.
UNLESS OTHERWISE SPECIFIED DIMENSIONS ARE IN INCHES AND INCLUDE CHEMICALLY APPLIED OR PLATED FINISHES		SCALE	1:1			
DECIMALS		FRACTIONS		CODE		
.X ± .05		± 1/64				
.XX ± .01		ANGLES				
.XXX ± .005		± 0° 30'				
TOLERANCES						
5052-H32		HEAT TREAT. SPEC.		DRAWN		CHECKED
S404-YELLOW IRIDITE		ELEC. DES. APP.		MECH. DES. APP.		MS-568 D
FINISH & SPEC. NO.						