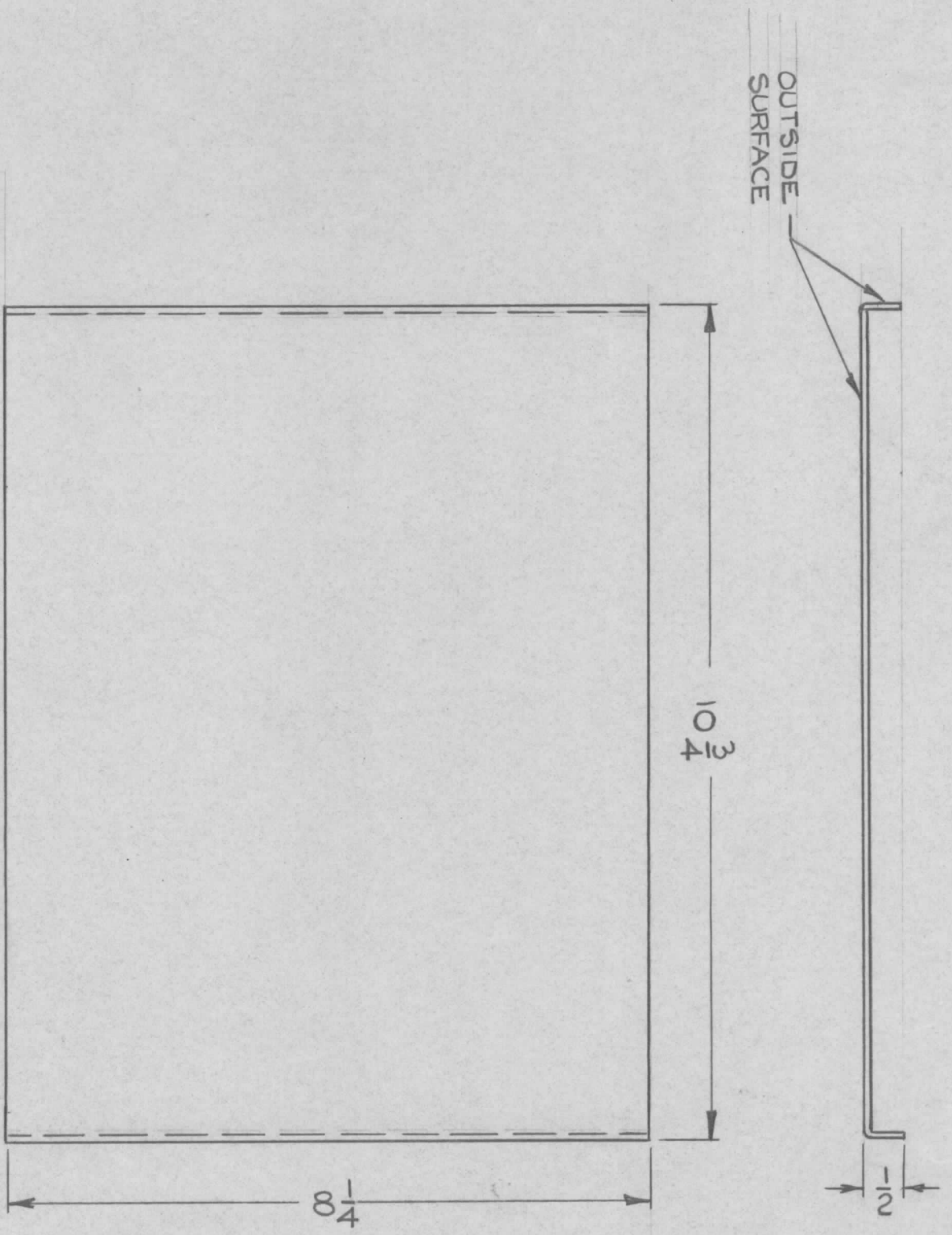


REVISIONS						
SYM	DESCRIPTION	DATE	E.M.N. NO.	DRAFT	CHKD	APPD
Ø	ORIGINAL RELEASE FOR PRODUCTION	8-3-66	Ø	RME		

MS 5000 Ø



REQ'D.	ITEM	PART NUMBER	DESCRIPTION	SYMBOL
	BUDETTI		LIST OF MATERIAL	

MATERIAL .064 THK. ALUMINUM 5052-H32

FINISH SEE NOTES

TITLE THE TECHNICAL MATERIEL CORP. MAMARONECK, NEW YORK

UNLESS OTHERWISE SPECIFIED DIMENSIONS ARE IN INCHES AND INCLUDE CHEMICALLY APPLIED OR PLATED FINISHES	DECIMALS	TOLERANCES	FRACTIONS
	.X ± .05		± 1/64
	.XX ± .01		ANGLES ± 0° 30'
	.XXX ± .005		

QTY./UNIT	KIT-262	MODEL USED ON	ASSY. NO.
SCALE	HALF		

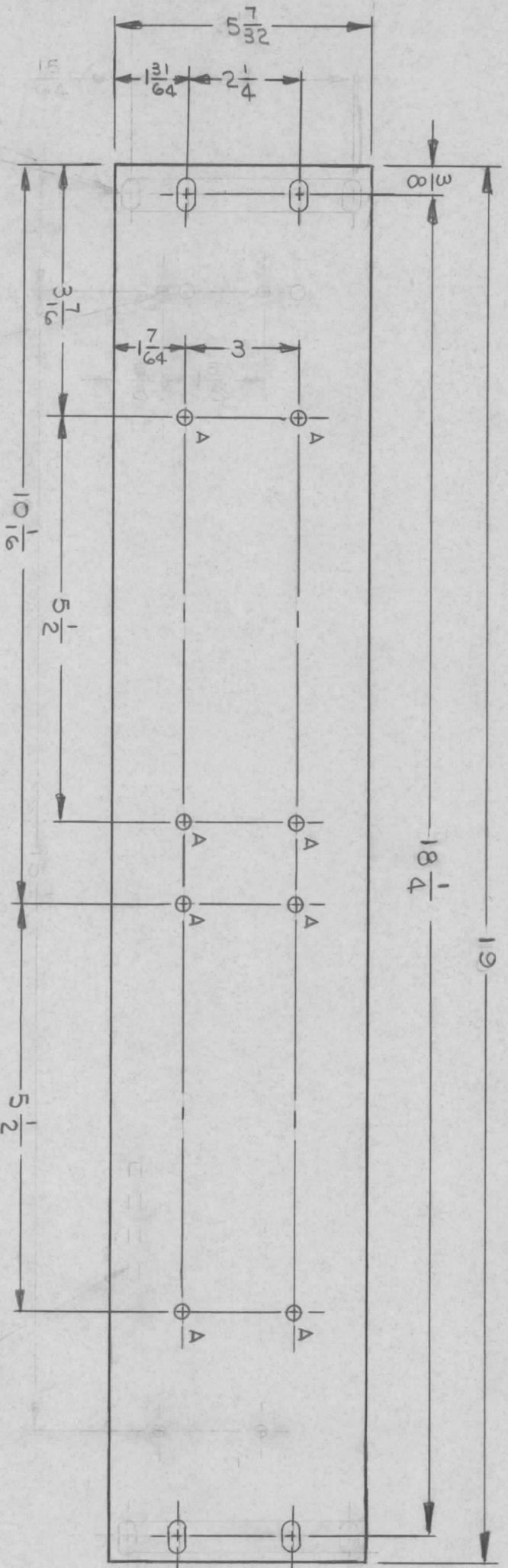
THE CONTENTS OF THIS DRAWING ARE THE EXCLUSIVE PROPERTY OF THE TECHNICAL MATERIEL CORP. ITS UNAUTHORIZED USE OR REPRODUCTION IN WHOLE OR IN PART IS STRICTLY FORBIDDEN.

- FINISH NOTES:
- S404 - IRIDITE 14-2 AL-COAT.
 - S114 - ZINC CHROMATE PRIMER } FRONT AND EDGES ONLY
 - S115 - SMOOTH GRAY ENAMEL }

NOTES

MS 5004 ϕ

REVISIONS		DATE	E.M.N. NO.	DRAFT	CHKD	APPD
X2	REDRAWN W/ NO CHANGES.	7/12/66		JL		
X3	COMPLETELY REDRAWN & REVISED	8/31/66		JL		
X4	SLOT MTG CRT'S WERE 2 3/8" MATL WAS 1/8 THK	11/6/66		JL		
ϕ	ORIGINAL RELEASE FOR PRODUCTION	12/2/66		CV		



SLOT 1/4 X 29/64
(4-REQ'D)

MARK TMC PT. NO.
1/8 HIGH GOTHIC
W/LATEST REV LETTER
ON REAR OF PANEL

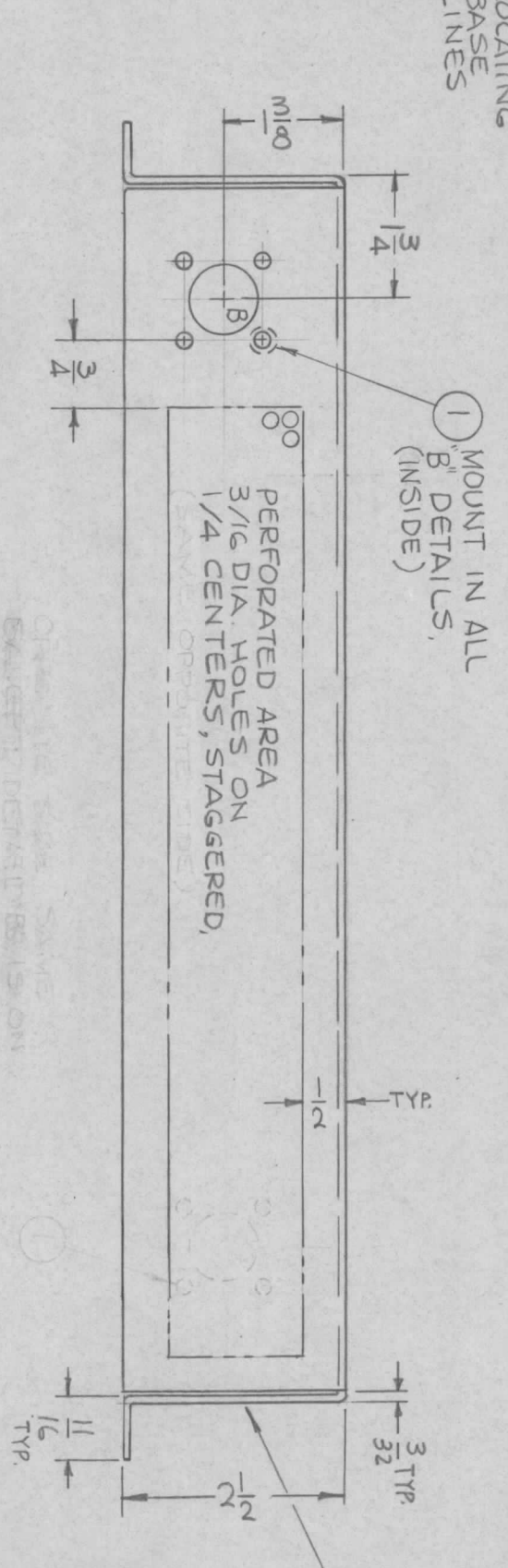
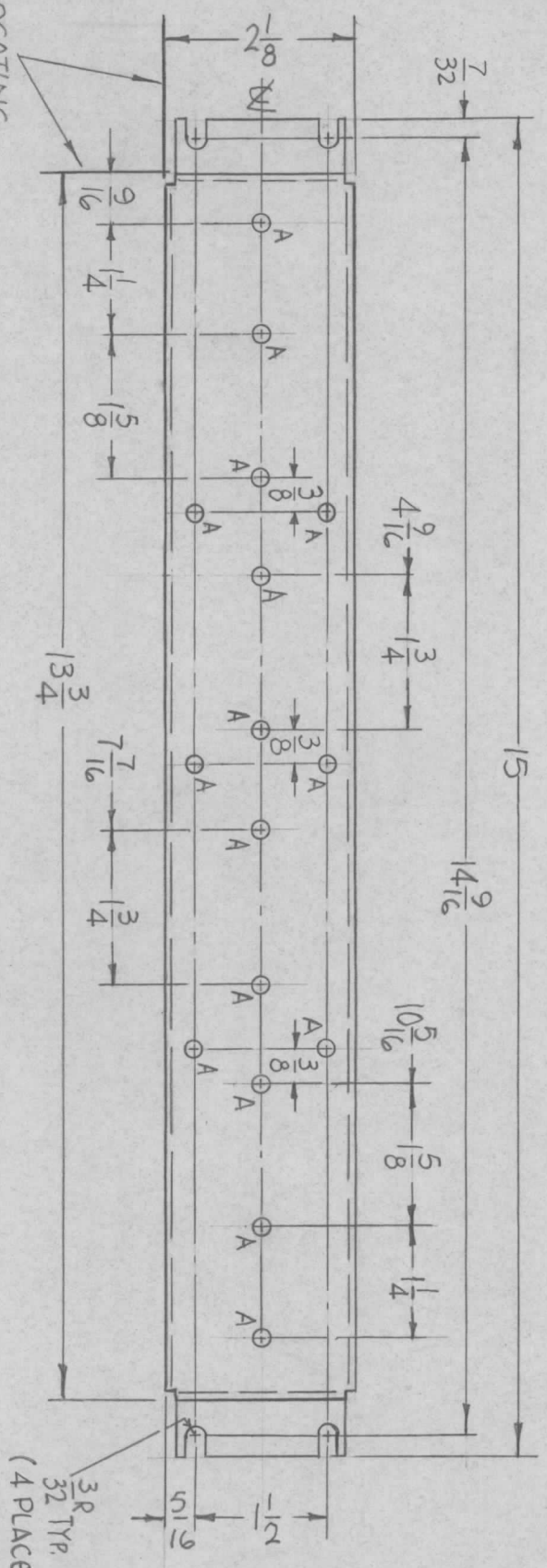
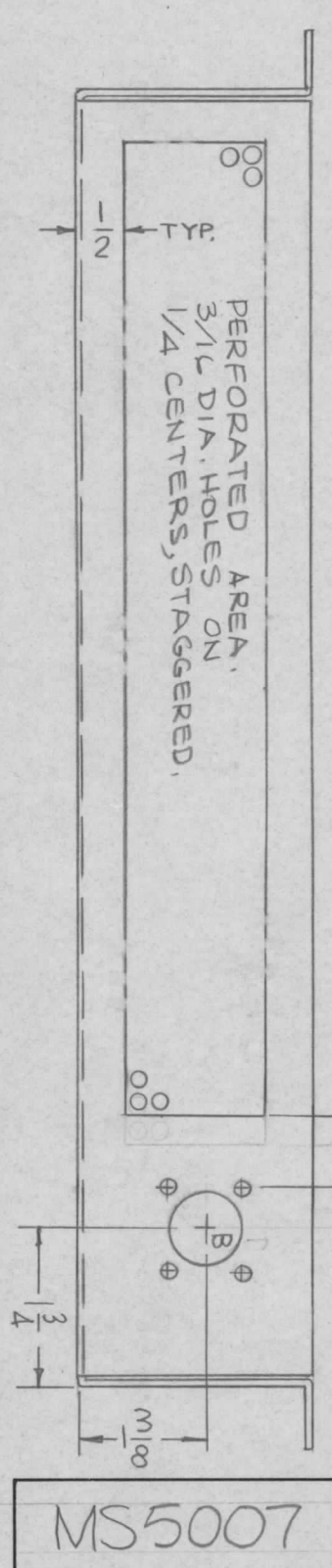
HOLE LEGEND
HOLE DESCRIPTION REQ.
A 11/64 DIA 8

REQ'D.	ITEM	PART NUMBER	DESCRIPTION	SYMBOL
	STURMER			
MATERIAL				
5/16 THK ALUMINUM				
5052-H32				
FINISH				
YELLOW IRIDITE				
PER S404				
TITLE				
PANEL, FRONT				
LIST OF MATERIAL				
THE TECHNICAL MATERIEL CORP.				
MAMARONECK, NEW YORK				
UNLESS OTHERWISE SPECIFIED	DIMENSIONS ARE IN INCHES AND INCLUDE			
CHEMICALLY APPLIED OR PLATED FINISHES	FRACTIONS			
DECIMALS	X ± .05			
	XX ± .01			
	XXX ± .005			
TOLERANCES	± 1/64			
	ANGLES			
	± 0° 30'			
DRAWN	JLESZINSKI	DATE	7/12/66	FINAL APPROVAL
CHECKED	<i>[Signature]</i>	DATE	11/29/66	<i>[Signature]</i>
ELECT. DES.		DATE		
MECH. DES.		DATE	12-1-66	
MS 5004				DATE
				12/1/66
SHEET				REV. LTR.
				ϕ

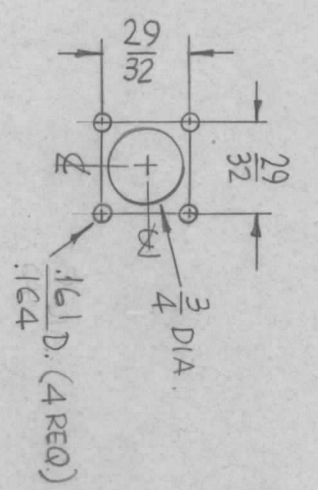
NOTES

THE CONTENTS OF THIS DRAWING ARE THE EXCLUSIVE PROPERTY OF THE TECHNICAL MATERIEL CORP. ITS UNAUTHORIZED USE OR REPRODUCTION IN WHOLE OR IN PART IS STRICTLY FORBIDDEN.

REVISIONS		DATE	E.M.N. NO.	DRAFT	CHKD	APPD
SYM	DESCRIPTION					
X	EXP. RELEASE	7-13-66	X	AW		AW
Ø	ORIG. RELEASE FOR PRODUCTION	5-25-67	Ø	RG		AW



HOLES:
A ~ 11/64 DIA. (16 REQ.)
B ~ SEE DETAIL (2 REQ.)



MARK TMC P/N (MS5007)
1/8 HIGH GOTHIC W/LATEST
REV. LETTER.

REC'D.	ITEM	PART NUMBER	DESCRIPTION	SYMBOL
8	1	NT129-440-4	NUT, PLAIN, SPLINE	B

LIST OF MATERIAL		THE TECHNICAL MATERIEL CORP.	
MATERIAL		MAMARONECK, NEW YORK	
F. BUDETTI	062 THICK	TITLE	CHASSIS, 1K FILTER
	5052-H32		
	5404 YEL. IRIDITE		

QTY./UNIT	1	MODEL USED ON	LPA-1K	ASSY. NO.	
SCALE	1:2	CODE	A	5401-451	

UNLESS OTHERWISE SPECIFIED		UNLESS OTHERWISE SPECIFIED	
DIMENSIONS ARE IN INCHES AND INCLUDE CHEMICALLY APPLIED OR PLATED FINISHES	TOLERANCES	FRACTIONS	ANGLES
DECIMALS	.X ± .05	± 1/64	
	.XX ± .01	ANGLES	± 0° 30'
	.XXX ± .005		

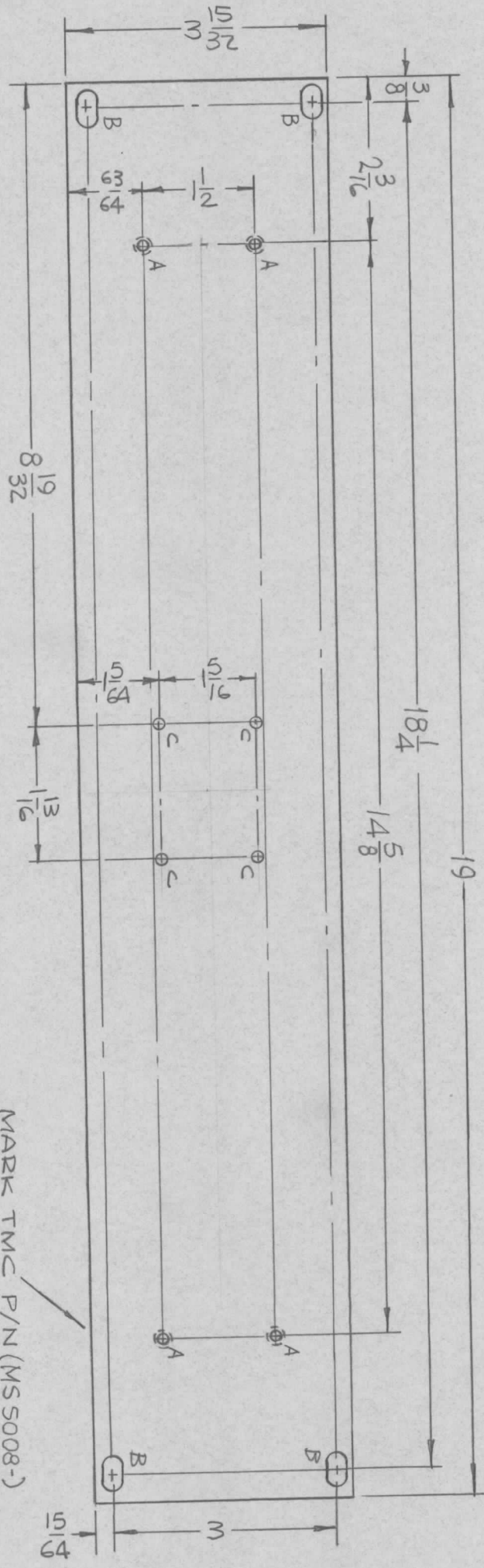
- UNLESS OTHERWISE SPECIFIED:
1. USE MATERIAL THICKNESS FOR MAXIMUM RADIUS ON ALL BENDS
 2. ALL ANGULAR BENDS 90 DEGREES
 3. REMOVE ALL BURRS AND SHARP EDGES
 4. MOUNT INSERTS AFTER FINISHING

NOTES

HOLES:

- A. DRILL & TAP FOR 8-32 (4REQ)
- B. 29/64 X 1/4 SLOT (4REQ)
- C. .078 DIA. (4REQ)

REVISIONS		DATE	E.M.N. NO.	DRAFT	CHKD	APPD
SYM	DESCRIPTION					
X	EXP. RELEASE	7-14-66	X	MB		
Ø	ORIG. RELEASE FOR PRODUCTION	6-25-67	Ø	RG		



MARK TMC P/N (MS5008-)
 1 HIGH GOTHIC W/LATEST
 8 REV. LETTER.
 (ON REAR)

- FINISH NOTES:
1. S404 - IRIDITE 14-2 AL-COAT.
 2. S114 - ZINC CHROMATE PRIMER } FRONT AND EDGES ONLY
 3. S115 - SMOOTH GRAY ENAMEL } OR PRIME AND PAINT PER CUSTOMER'S SPECIFICATIONS.

- MACHINING:
1. MILL ALL EDGES.
 2. HOLES MUST BE DRILLED, UNLESS OTHERWISE SPECIFIED.
 3. LATERAL BOW OF PANEL MUST BE KEPT TO .031 TOLERANCE.
 4. PANEL MUST BE FREE OF ALL MACHINING MARKS, GOUGES AND SCRATCHES. IF NECESSARY, SAND FRONT OF PANEL WITH NO. 120 GRIT SANDPAPER.

NOTES

QTY./UNIT	1	LPFA-1K	MODEL USED ON	ASS'Y. NO.
SCALE	1:2	A	S401-451	

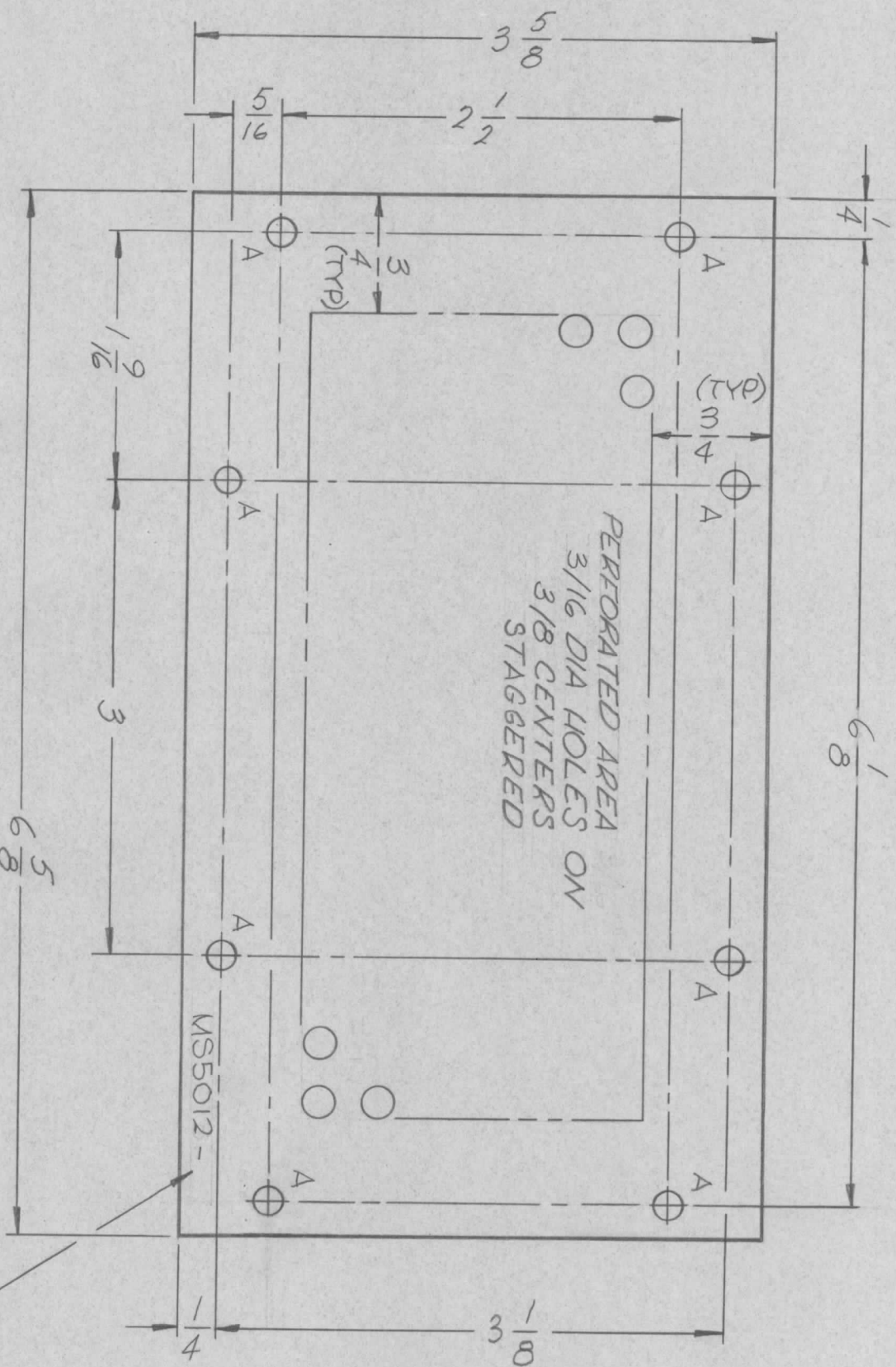
REQ'D.	ITEM	PART NUMBER	DESCRIPTION	SYMBOL
	F. BUDETTI		THE TECHNICAL MATERIEL CORP.	
	MATERIAL		MAMARONECK, NEW YORK	
	3/16 THICK ALUMINUM			
	2024-T3			
	FINISH		PANEL, 1K FILTER	
	SEE NOTES			

UNLESS OTHERWISE SPECIFIED
 DIMENSIONS ARE IN INCHES AND INCLUDE
 CHEMICALLY APPLIED OR PLATED FINISHES

DRAWN	DATE	FINAL APPROVAL	DATE
CHECKED	DATE		
ELECT. DES.	DATE		
MECH. DES.	DATE		

MS5008

REVISIONS							
ZONE	LTR	DESCRIPTION	DATE	E.M.N. NO	DRAFT	CHKD	APPD
	X1	REDRAWN W/ O CHANGE	2-26-67				
	X2	MODEL WAS TFP-25K	7-5-67				
	Ø	ORIG. RELEASE FOR PROD.	7-5-67				
	A	FINISH WAS S245 SILVER PLATE	5/1/68				
		S423 SILVER KOTE	1/8-9-11				
							FB



MARK TMC PART/NO
 & HIGH GOTHIC W/LATEST
 REVISION LETTER

HOLE
 A ~ 11/64 DIA (8 REQ)

- UNLESS OTHERWISE SPECIFIED:
1. USE MATERIAL THICKNESS FOR MAXIMUM RADIUS ON ALL BENDS
 2. ALL ANGULAR BENDS 90 DEGREES
 3. REMOVE ALL BURRS AND SHARP EDGES

REQ'D ITEM	PART NUMBER	DESCRIPTION	SYM.
LIST OF MATERIAL			

THE TECHNICAL MATERIEL CORP.
 MAMARONECK, NEW YORK

COVER, FILTER

QTY / UNIT	1	MODEL USED ON	AF-107	ASS'Y NO.	
APPLICATION		CODE	A		
S401-451					

UNLESS OTHERWISE SPECIFIED DIMENSIONS ARE IN INCHES AND INCLUDE CHEMICALLY APPLIED OR PLATED FINISHES	DECIMALS	FRACTIONS
.X ± .05	1/64	ANGLES
.XX ± .01		0° - 30'
.XXX ± .005		
MATERIAL	059 ALUMINUM	
FINISH	S404 YEL IRIDITE	

FINAL APPROVAL	DATE
MECH. DES.	DATE
ELECT. DES.	DATE
CHECKED	DATE
DRAWN	DATE

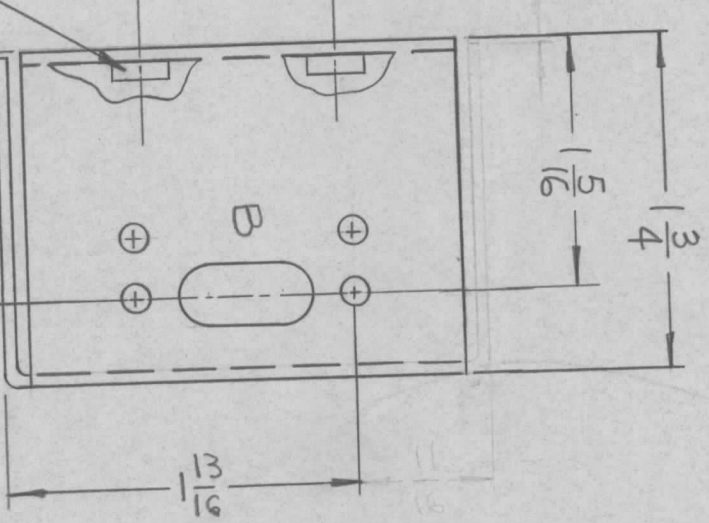
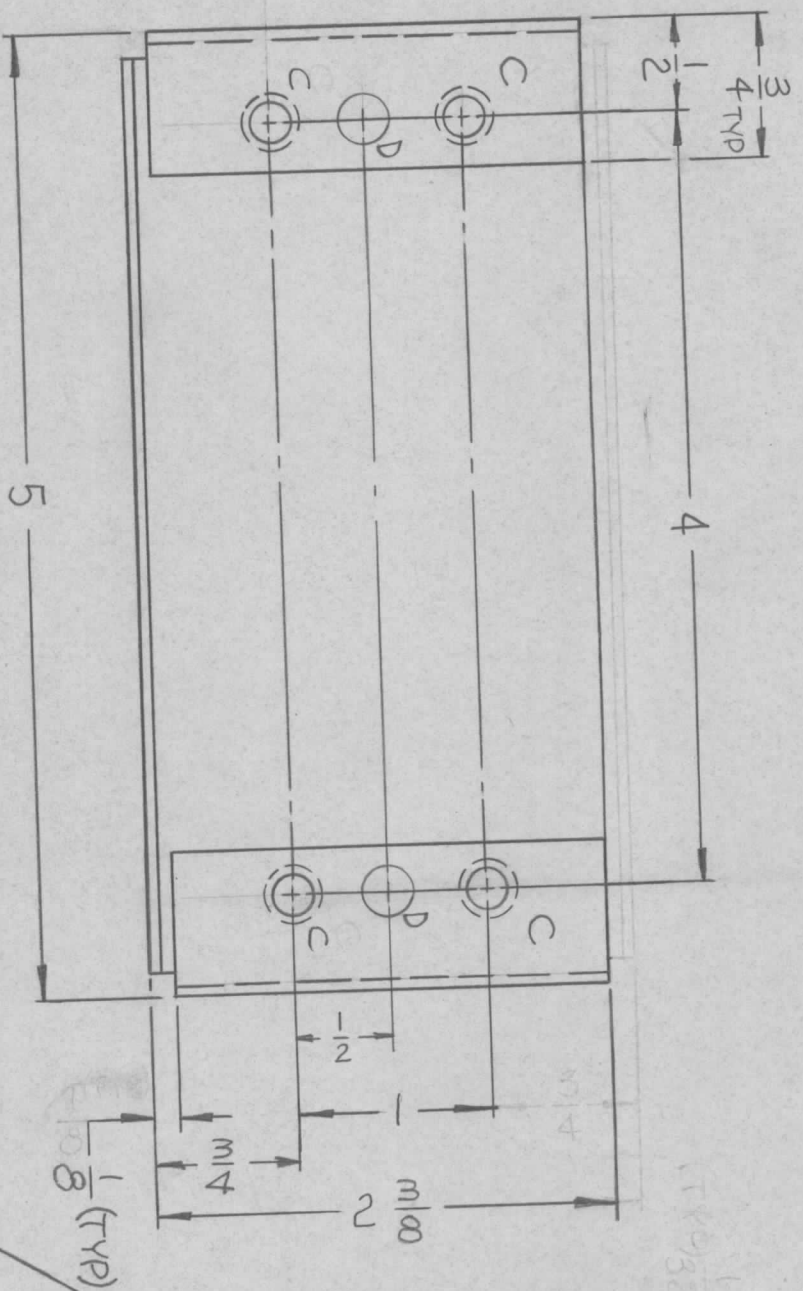
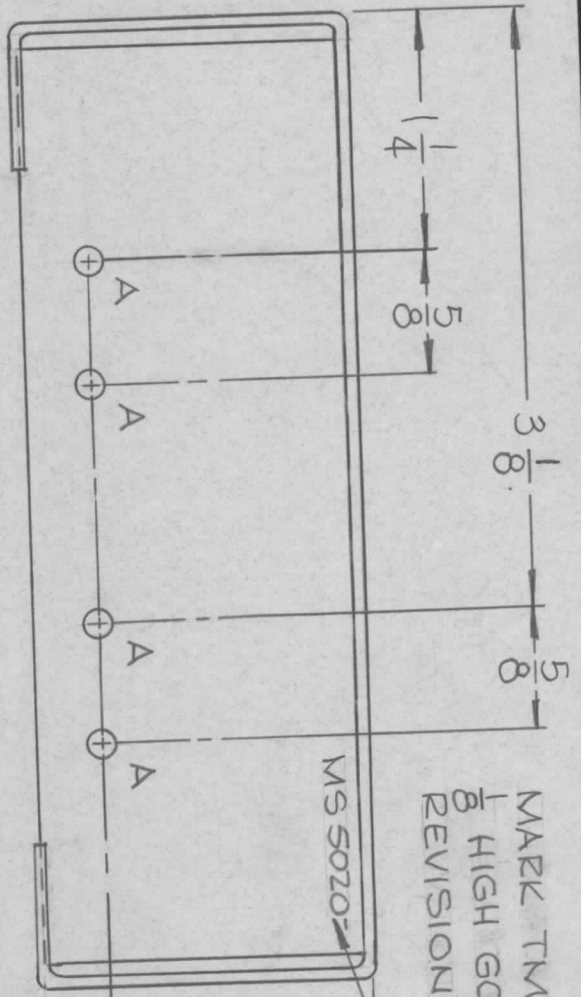
SIZE	CODE IDENT. NO.	DWG NO.	ISSUE
B	82679	M35012	A
SCALE	1:1	SHEET	OF

NOTICE TO PERSONS RECEIVING THIS DRAWING
 THE TECHNICAL MATERIEL CORPORATION claims proprietary right in the material disclosed hereon. This drawing is issued in confidence for engineering information only and may not be reproduced or used to manufacture anything shown hereon without permission from THE TECHNICAL MATERIEL CORPORATION to the user. This drawing is loaned for mutual assistance and is subject to recall at any time.

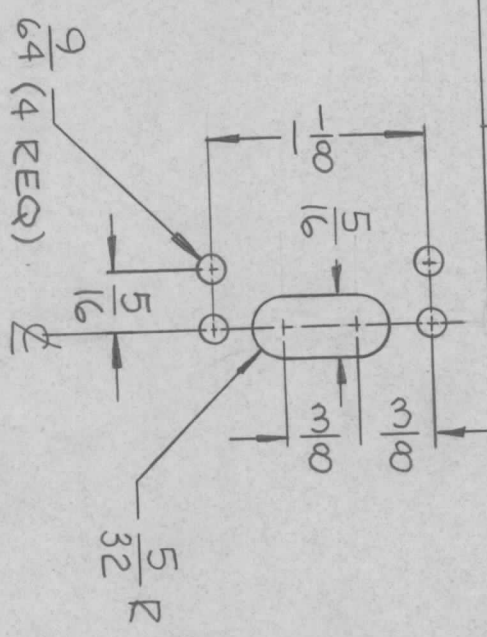
SYM	DESCRIPTION	DATE	E.M.N. NO.	DRAFT	CHKD	APPD
X	EXP RELEASE	7.7.66	-	WFO		
X	ORIGINAL RELEASE FOR PRODUCTION	12.7.66	-	WFO		

MARK TMC PART/NO.
1/8 HIGH GOTHIC W/LATEST
REVISION LETTER

MS 5020



HOLE	DESCRIPTION	REQ'D
A	9/64 DIA	4
B	SEE DETAIL "B"	1
C	.191 - .194 DIA	4
D	1/4 DIA.	2



MOUNT IN ALL "C" HOLES AS SHOWN

REC'D.	ITEM	PART NUMBER	DESCRIPTION	SYMBOL
4	1	NT129-632-4	NUT, PLAIN SPLINE	

REC'D.	ITEM	PART NUMBER	DESCRIPTION	SYMBOL
		F. BUDETTI	THE TECHNICAL MATERIEL CORP. MAMARONECK, NEW YORK	
			CHASSIS, POWER LIGHT	

MATERIAL
.064 ALUMINUM
5052-H32

TITLE
CHASSIS, POWER LIGHT

UNLESS OTHERWISE SPECIFIED:

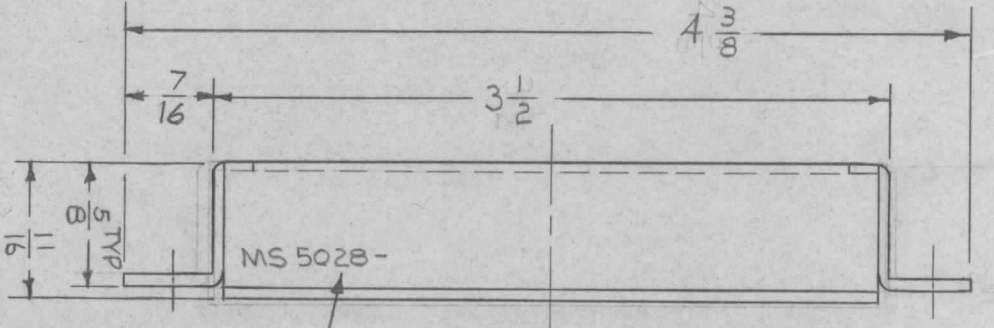
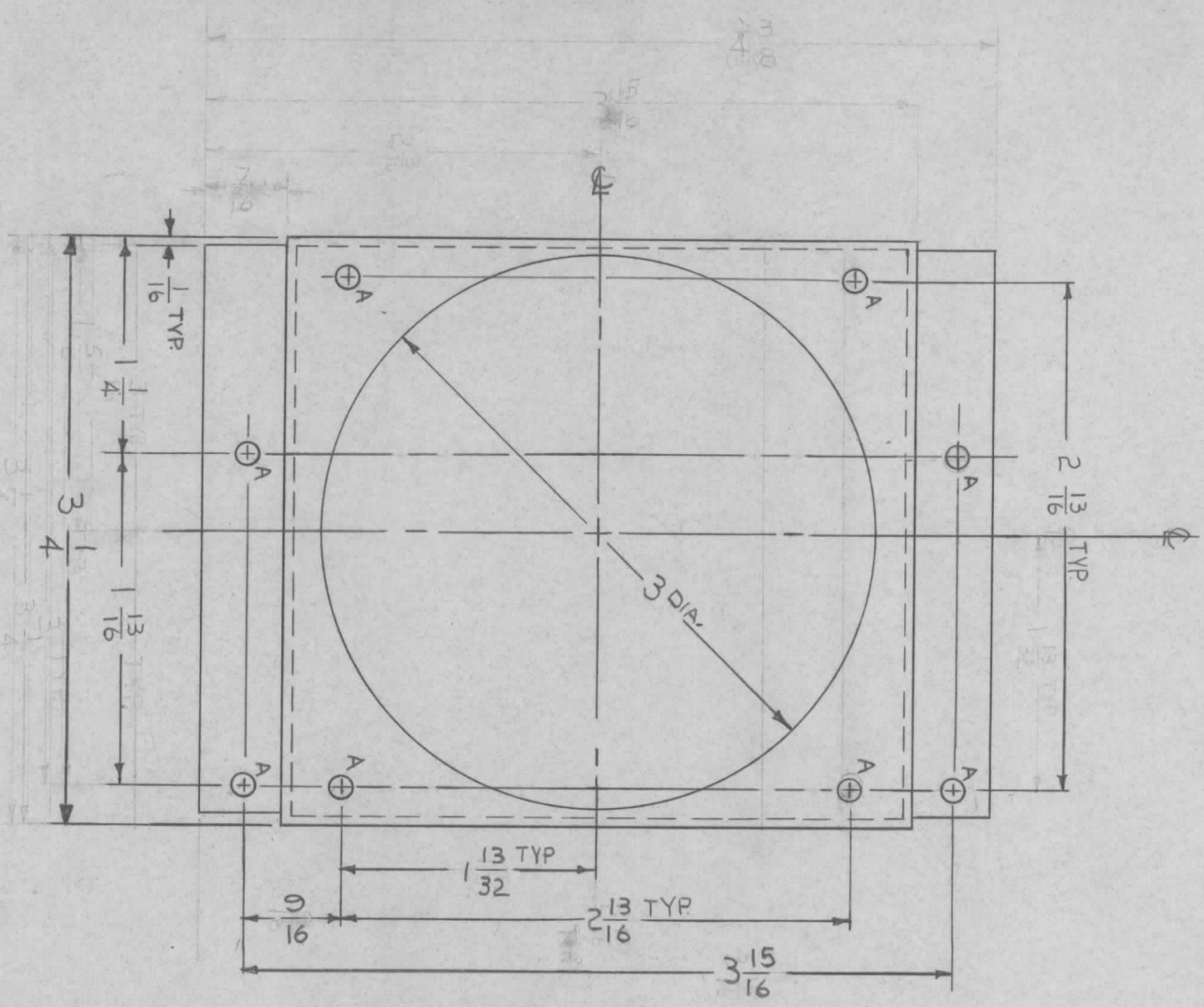
1. USE MATERIAL THICKNESS FOR MAXIMUM RADIUS ON ALL BENDS
2. ALL ANGULAR BENDS 90 DEGREES
3. REMOVE ALL BURRS AND SHARP EDGES
4. MOUNT INSERTS AFTER FINISHING

NOTES

Q'TY./UNIT	1	MODEL USED ON	RAK-110-2	ASSY. NO.	
SCALE	1/1	CODE	A		

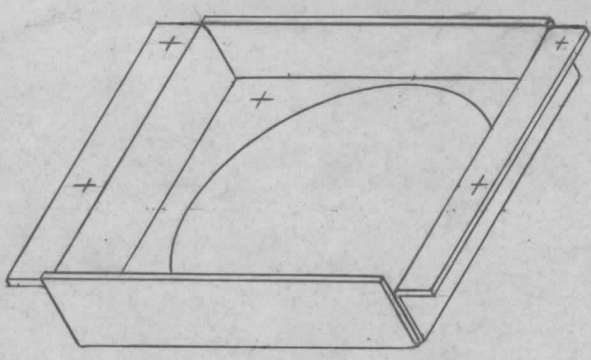
UNLESS OTHERWISE SPECIFIED DIMENSIONS ARE IN INCHES AND INCLUDE CHEMICALLY APPLIED OR PLATED FINISHES

DECIMALS	FRACTIONS	TOLERANCES
X ± .05	± 1/64	
.XX ± .01	ANGLES	
.XXX ± .005	± 0° 30'	

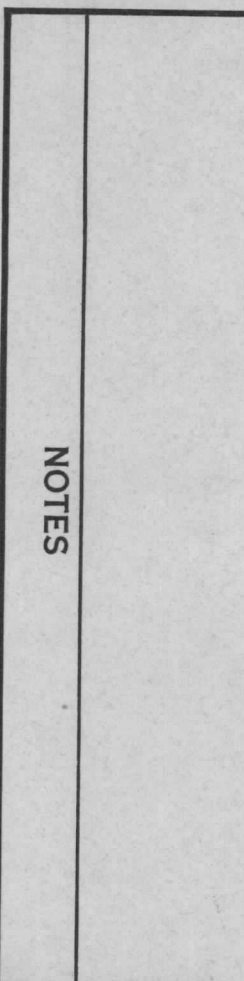


MARK TMC. PART NUMBER
1/8 HIGH GOTHIC W/LATEST
REVISION LETTER.

HOLES: A - $\frac{11}{64}$ - 8 REQ.



REVISIONS		DATE	E.M.N. NO.	DRAFT	CHKD	APPD
Ø	ORIGINAL RELEASE FOR PRODUCTION	9/8/66	Ø	CV		



QTY./UNIT	MODEL USED ON	ASS'Y. NO.
1	KIT-317	
SCALE		
1-1		

UNLESS OTHERWISE SPECIFIED DIMENSIONS ARE IN INCHES AND INCLUDE CHEMICALLY APPLIED OR PLATED FINISHES	TOLERANCES	FRACTIONS
DECIMALS	X ± .05	± 1/64
	.XX ± .01	ANGLES
	.XXX ± .005	± 0° 30'

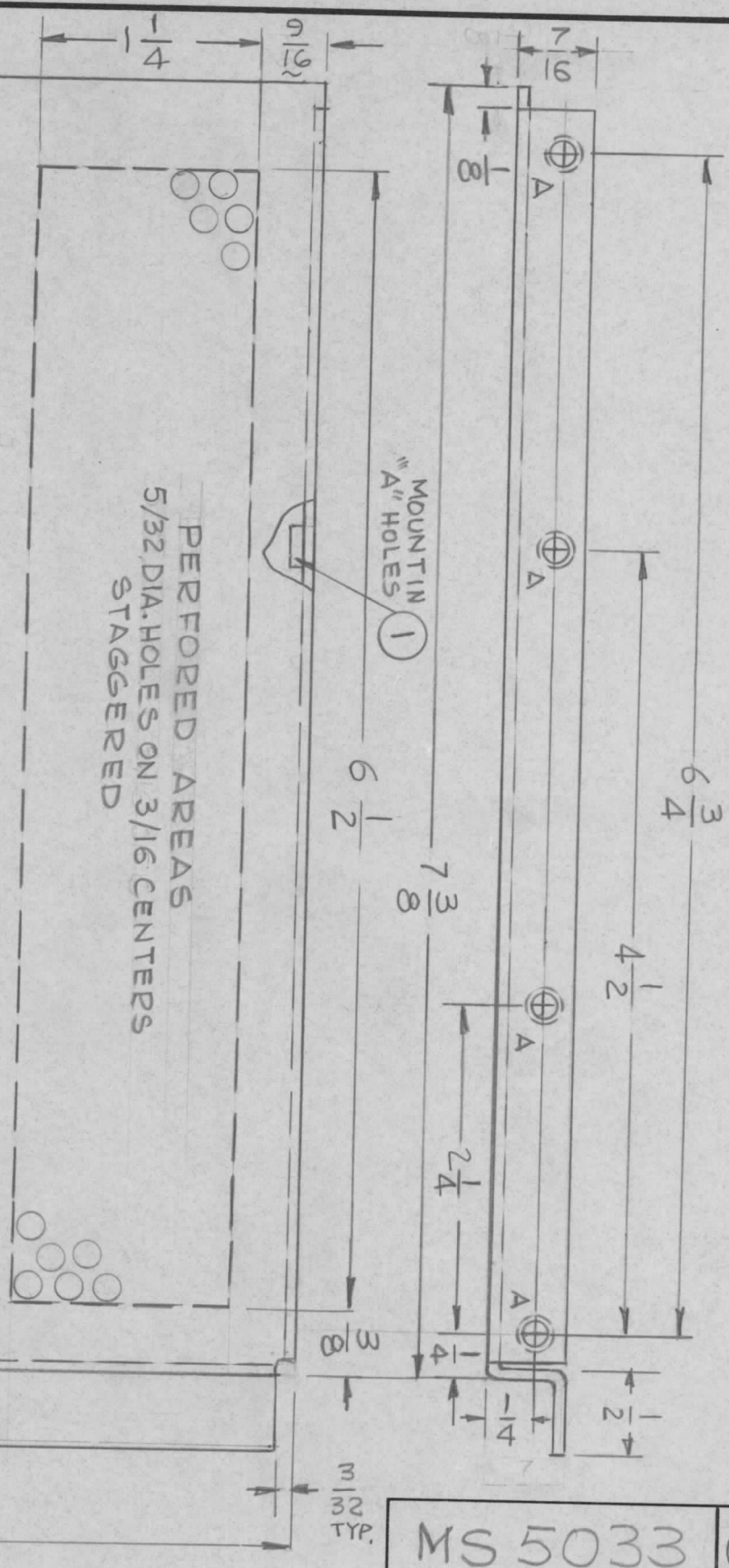
DRAWN	DATE	FINAL APPROVAL	DATE
RME	8.11.66		
CHECKED	DATE		
ELECT. DES.	DATE		
MCH. DES.	DATE		
		MS 5028	

REQ'D.	ITEM	PART NUMBER	DESCRIPTION	SYMBOL
			LIST OF MATERIAL	
			THE TECHNICAL MATERIEL CORP.	
			MAMARONECK, NEW YORK	
			HOUSING, FAN	

NOTES

THE CONTENTS OF THIS DRAWING ARE THE EXCLUSIVE PROPERTY OF THE TECHNICAL MATERIEL CORP. ITS UNAUTHORIZED USE OR REPRODUCTION IN WHOLE OR IN PART IS STRICTLY FORBIDDEN.

REVISIONS						
SYM	DESCRIPTION	DATE	E.M.N. NO.	DRAFT	CHKD	APPD
X	EXP. RELEASE	8-10-66	#1	C.D.L	HS	HS
X1	2-1/4 SLOT DIM. WAS 2"	10-7-66	X1			
X2	9/16 WAS 3/8, 5-7/16 WAS 5-1/4	10-18-66	X2			
Ø	ORIGINAL RELEASE FOR PRODUCTION	11.11.66		WHD		FDO



MS 5033

MARK TMC PART NO.
1/8 HIGH GOTHIC WITH
LATEST REV. LETTER

HOLE -
A - .164 - .161 DIA 4REQ.

UNLESS OTHERWISE SPECIFIED:

1. USE MATERIAL THICKNESS FOR MAXIMUM RADIUS ON ALL BENDS
2. ALL ANGULAR BENDS 90 DEGREES
3. REMOVE ALL BURRS AND SHARP EDGES
4. MOUNT INSERTS AFTER FINISHING

NOTES

Q.T.Y./UNIT	1	TLAA-2.5K	ASSY. NO.	A5491
SCALE	1:1	MODEL USED ON	CODE	A

REQD.	ITEM	PART NUMBER	DESCRIPTION	SYMBOL
4	1	NT129-440-4	NUT, PLAIN SPLINE	

F. BUDETTI

MATERIAL PERFORATED 5052-H32

FINISH 5404 YEL. IRIDITE

LIST OF MATERIAL

THE TECHNICAL MATERIEL CORP.
MAMARONECK, NEW YORK

SHIELD, ELECTRICAL

DRAWN	DATE	FINAL APPROVAL	DATE
G.D.L.	8-10-66	[Signature]	11/10/66
CHECKED		[Signature]	
ELECT. DES.		[Signature]	
MECH. DES.		[Signature]	

DATE 11-9-66

DATE 11-9-66

MS 5033

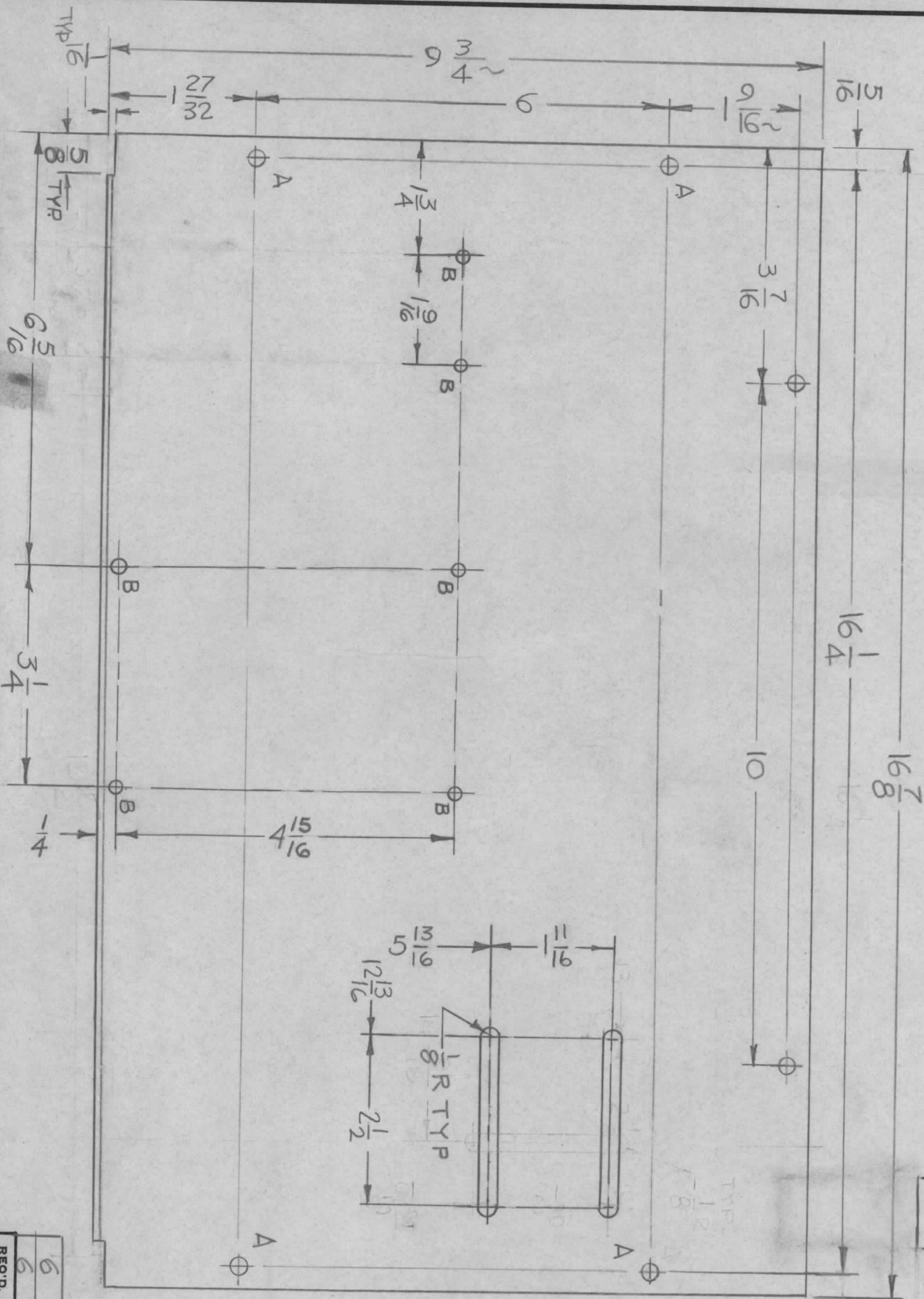
REV. LTR.

UNLESS OTHERWISE SPECIFIED DIMENSIONS ARE IN INCHES AND INCLUDE CHEMICALLY APPLIED OR PLATED FINISHES

DECIMALS X ± .05 TOLERANCES ± 1/64 ANGLES ± 0° 30'

THE CONTENTS OF THIS DRAWING ARE THE EXCLUSIVE PROPERTY OF THE TECHNICAL MATERIEL CORP. ITS UNAUTHORIZED USE OR REPRODUCTION IN WHOLE OR IN PART IS STRICTLY FORBIDDEN.

MS5035 A		REVISIONS				
SYM	DESCRIPTION	DATE	E.M.N. NO.	DRAFT	CHKD	APPD
Ø	ORIGINAL RELEASE FOR PRODUCTION	11-22-66	Ø	RME		
A	B HOLES ADDED; 5 3/8 WAS 5 7/8; 1 1/16 WAS 1 5/8	1-16-68	18721	gpl		



REF: LD1505

HOLES
 A - 1/4 DIA. 6 REQ.
 B - 9/64 DIA. 6 REQ.
 TO BE SUPPLIED AND
 ASSEMBLED BY TMC

MARK TMC PART NO MS 5035-
 1/8 HIGH GOTHIC W/LATEST
 REV. LETTER.

REQ'D.	ITEM	PART NUMBER	DESCRIPTION	SYMBOL
6	2	FS 109-3	RING, RETAINING	A
6	1	FS 110-1	STUD, TURNLOCK	A

LIST OF MATERIAL
 THE TECHNICAL MATERIEL CORP.
 MAMARONECK, NEW YORK

MATERIAL
 .051 THK ALUMINUM
 5052-H32
 FINISH
 S404 YEL IRIDITE
 TITLE
 COVER, BOTTOM

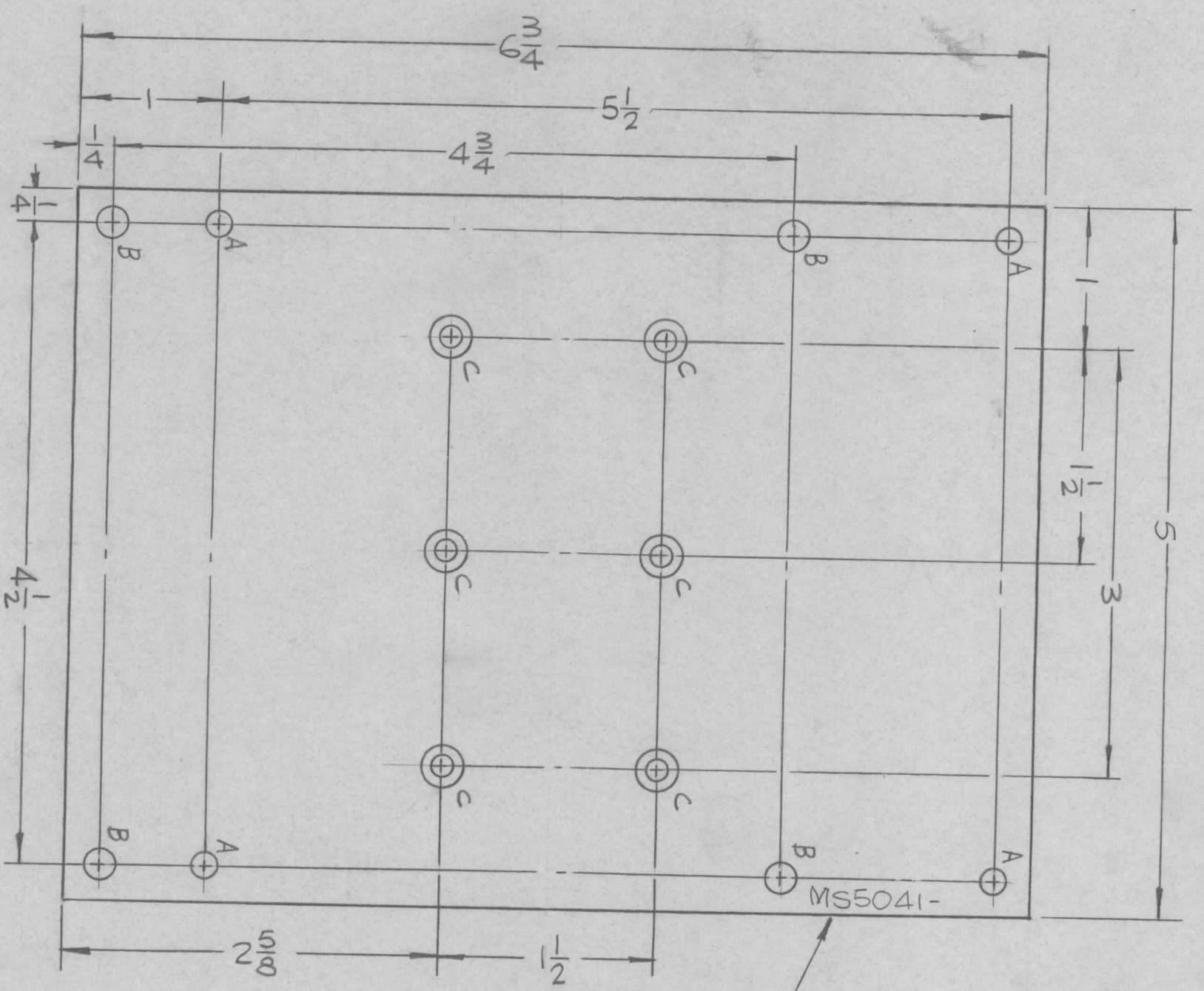
UNLESS OTHERWISE SPECIFIED	DRAWN	DATE	FINAL APPROVAL	DATE
DIMENSIONS ARE IN INCHES AND INCLUDE CHEMICALLY APPLIED OR PLATED FINISHES	G.D.L.	8-11-66	[Signature]	11-22-66
TOLERANCES	CHECKED	DATE		
DECIMALS .XX ± .01	ELECT. DES.	DATE		
FRACTIONS ± 1/64 ANGLES ± 0° 30'	MECH. DES.	DATE		

- UNLESS OTHERWISE SPECIFIED:
1. USE MATERIAL THICKNESS FOR MAXIMUM RADIUS ON ALL BENDS
 2. ALL ANGULAR BENDS 90 DEGREES
 3. REMOVE ALL BURRS AND SHARP EDGES

NOTES

QTY./UNIT	SCALE	MODEL USED ON	ASSY. NO.
1	1/2:1	SWCA-3K	A5264
CODE A			

THE CONTENTS OF THIS DRAWING ARE THE EXCLUSIVE PROPERTY OF THE TECHNICAL MATERIEL CORP. ITS UNAUTHORIZED USE OR REPRODUCTION IN WHOLE OR IN PART IS STRICTLY FORBIDDEN.



MS 5041

MARK TMC P/N
HIGH GOTHIC
W/LATEST REV,
LETTER.

HOLES	DESCRIPTION	REQ.
A	11/64 DIA.	4
B	13/64 DIA.	4
C	DR. 144 DIA. CSINK 82° TO .284 DIA.	6

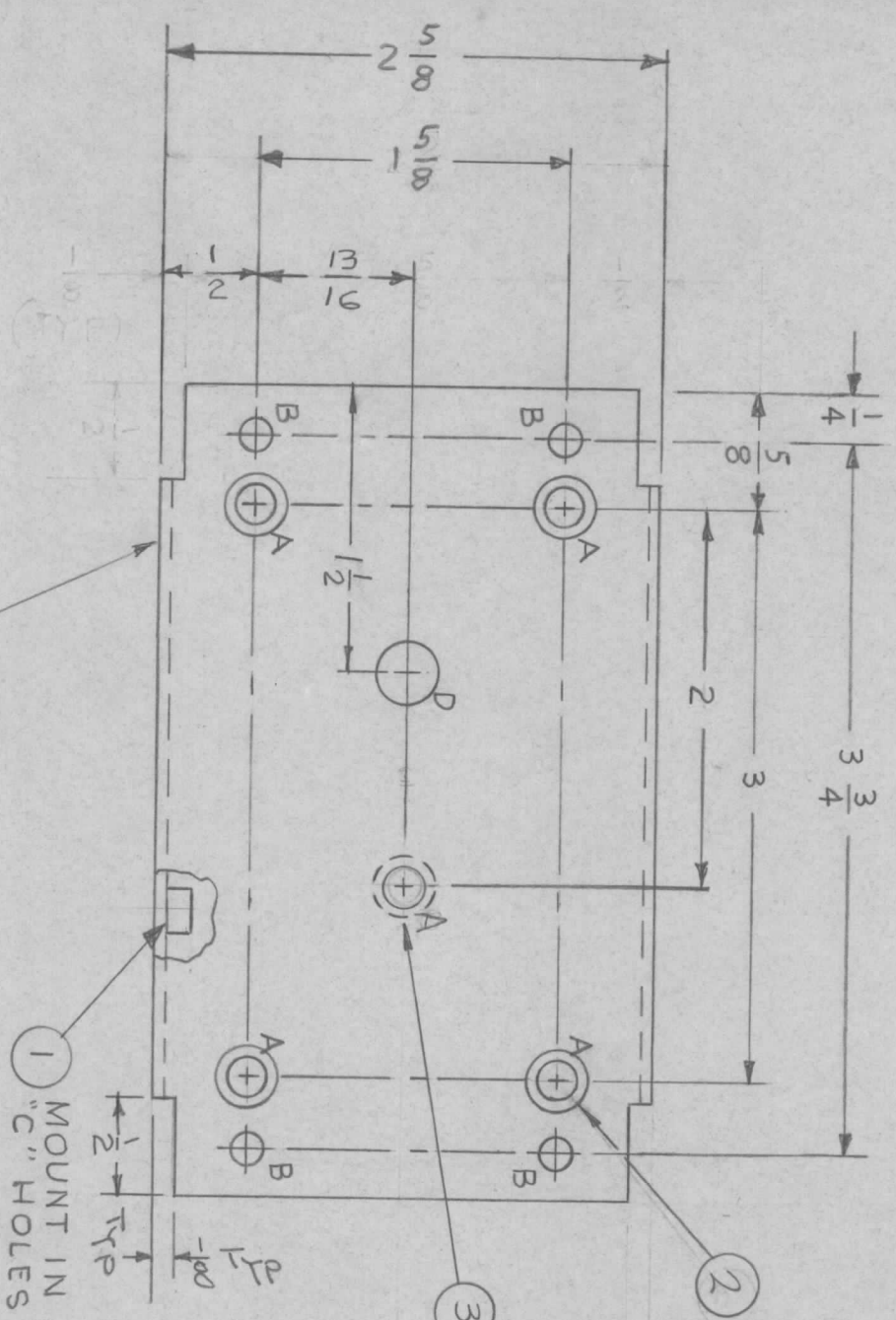
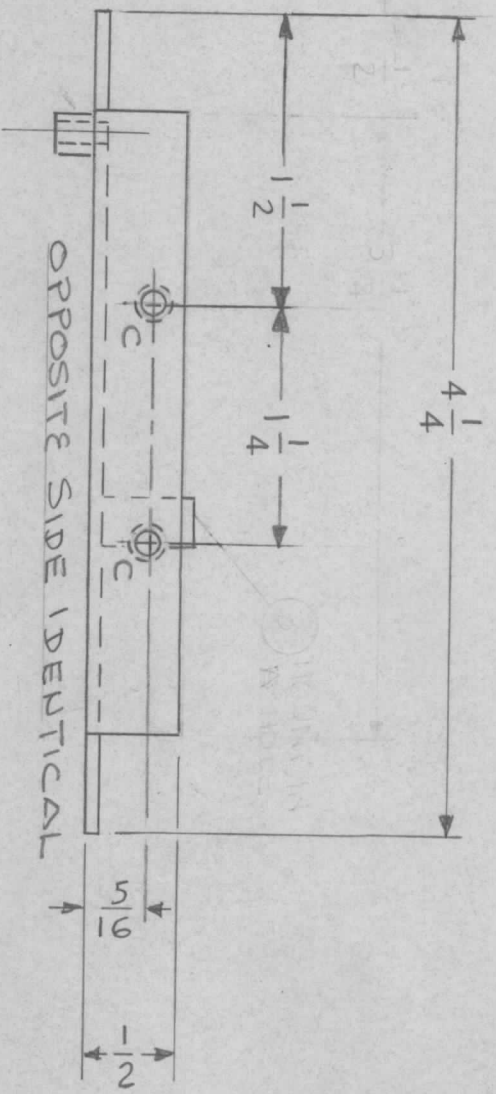
REVISIONS					
SYM	DESCRIPTION	DATE	E.M.N. NO.	DRAFT	CHKD
X	EXP. RELEASE	7-29-66	X		
Ø	ORIGINAL RELEASE FOR PRODUCTION	12.1.66		WFD	

Q'TY./UNIT	1	RAK111-2	A5586
MODEL USED ON		RAK110-2	A5586
SCALE	1:1	CODE A	ASSY. NO.

REQ'D. ITEM	F. BUDETTI	PART NUMBER	
MATERIAL	'064 THICK ALUMINUM 5052 H-32		
FINISH	S404 YEL. IRIDITE		
UNLESS OTHERWISE SPECIFIED DIMENSIONS ARE IN INCHES AND INCLUDE CHEMICALLY APPLIED OR PLATED FINISHES			
DECIMALS	X ± .05	TOLERANCES	FRACTIONS ± 1/64 ANGLES ± 0° 30'
DRAWN		DATE	7-29-66
CHECKED		DATE	11-21-66
ELECT. DES.		DATE	
MECH. DES.		DATE	
TITLE		DESCRIPTION	SYMBOL
THE TECHNICAL MATERIEL CORP. MAMARONECK, NEW YORK		PLATE, END, FILTER BOARD	
FINAL APPROVAL		DATE	12/1/66
MS 5041		REV. LTR.	Ø

NOTES

THE CONTENTS OF THIS DRAWING ARE THE EXCLUSIVE PROPERTY OF THE TECHNICAL MATERIEL CORP. ITS UNAUTHORIZED USE OR REPRODUCTION IN WHOLE OR IN PART IS STRICTLY FORBIDDEN.



MS5043

SYM	DESCRIPTION	DATE	E.M.N. NO.	DRAFT	CHKD	APPD
X	EXP. RELEASE	8-19-66	X	JBC		
X1	MTG OF ITEM 2 CLARIFIED	10/6/66	X1	HD		
X2	1 A WAS B, ITEM 3 ADDED	10-12-66	X2	HD		
X3	D HOLE ADDED	10-21-66	X3	HD		
Ø	ORIGINAL RELEASE FOR PRODUCTION	11-22-66	Ø	RME		

HOLES	DESCRIPTION	REQ.
A	.189 DIA	5
B	11/64 DIA	4
C	.191-.194 DIA	4
D	5/16 DIA.	1

MARK TMC P/N 1/8 HIGH GOTHIC LETTERS WITH LATEST REV.

UNLESS OTHERWISE SPECIFIED:

1. USE MATERIAL THICKNESS FOR MAXIMUM RADIUS ON ALL BENDS
2. ALL ANGULAR BENDS 90 DEGREES
3. REMOVE ALL BURRS AND SHARP EDGES
4. MOUNT INSERTS AFTER FINISHING

NOTES

Q'TY./UNIT	1	MODEL USED ON	SWCA-3K	ASSY. NO.	BMA149
SCALE	1:1	CODE	A		

THE CONTENTS OF THIS DRAWING ARE THE EXCLUSIVE PROPERTY OF THE TECHNICAL MATERIEL CORP. ITS UNAUTHORIZED USE OR REPRODUCTION IN WHOLE OR IN PART IS STRICTLY FORBIDDEN.

REQ'D.	ITEM	PART NUMBER	DESCRIPTION	SYMBOL
1	3	TE 108-19	STANDOFF, RIVET TYPE	A
4	2	TE 108-1	STANDOFF, RIVET TYPE	A
4	1	NT 129-632-4	NUT, PLAIN, SPLINE	C

MATERIAL
 .063 THK. ALUMINUM
 5052-H32
 FINISH
 S 404 YEL. IRIDITE

LIST OF MATERIAL
THE TECHNICAL MATERIEL CORP.
 MAMARONECK, NEW YORK
 TITLE
 PLATE, BOTTOM

UNLESS OTHERWISE SPECIFIED	DRAWN	DATE	CHECKED	DATE	ELECT. DES.	DATE	MECH. DES.	DATE
DIMENSIONS ARE IN INCHES AND INCLUDE CHEMICALLY APPLIED OR PLATED FINISHES	JBC	8-19-66	JBC	11-19-66				
DECIMALS								
.X ± .05								
.XX ± .01								
.XXX ± .005								
TOLERANCES								
FRACTIONS								
± 1/64								
ANGLES								
± 0° 30'								

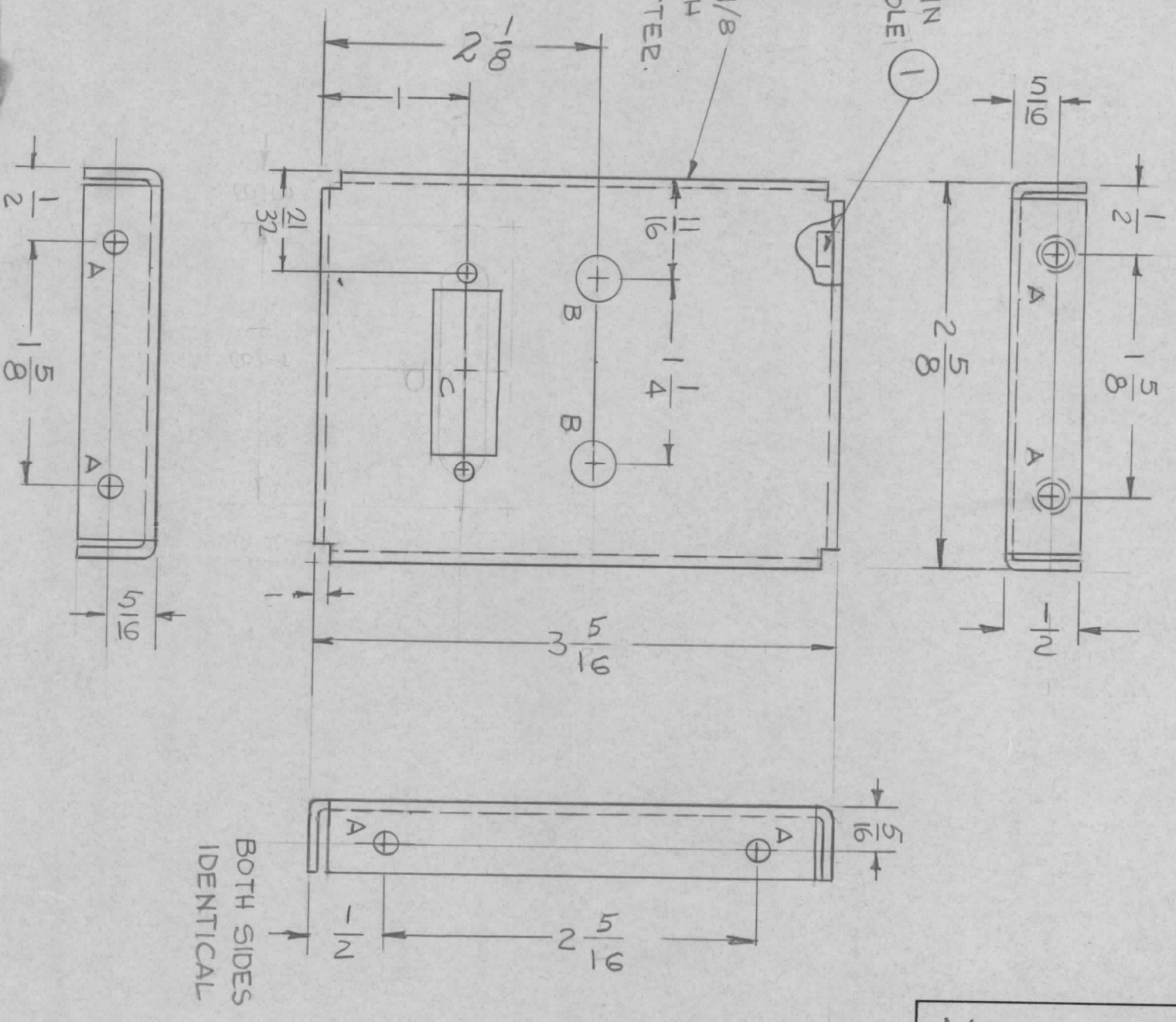
FINAL APPROVAL	DATE
<i>[Signature]</i>	11/22/66
MS5043	
REV. LTR.	

REVISIONS						
SYM	DESCRIPTION	DATE	E.M.N. NO.	DRAFT	CHKD	APPD
X	EXPERIMENTAL RELEASE	8/19/66	X	GDL	FDL	
X1	COMPLETELY REVISED	8-22-66	X1	JBC		
X2	2 1/8 DIM WAS 1 7/8	8/23/66	X2			
X3	C DETAIL WAS FOR A TERMINAL STRIP	8-24-66	X3			
Ø	ORIGINAL RELEASE FOR PRODUCTION	11-22-66	Ø	RME		

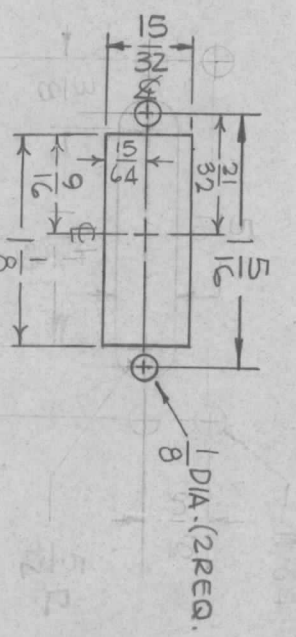
MS 5044

MOUNT IN ALL "A" HOLES

MARK TMC P/No 1/8 HIGH GOTHIC WITH LATEST REV. LETTER.



HOLE	DESCRIPTION	REQ.
A	.191-.194 DIA.	8
B	.312 DIA.	2
C	SEE DETAIL	1
D	SEE DETAIL	1



DETAIL "C"
(1 REQ.)

REF.	LD2150	NT 129-632-4	NUT PLAIN, SPLINE	DESCRIPTION	SYMBOL
8	1				C

LIST OF MATERIAL		THE TECHNICAL MATERIEL CORP.	
REQ'D.	ITEM	DESCRIPTION	SYMBOL
8	1	NT 129-632-4	C
MATERIAL		.064 THK. ALUMINUM	
		5052-H32	
FINISH		S404 YEL. IBIDITE	
TITLE		PLATE, REAR	
DRAWN		GDL	
CHECKED		QPS	
ELECT. DES.		QA	
MECH. DES.		AW	

UNLESS OTHERWISE SPECIFIED:

1. USE MATERIAL THICKNESS FOR MAXIMUM RADIUS ON ALL BENDS
2. ALL ANGULAR BENDS 90 DEGREES
3. REMOVE ALL BURRS AND SHARP EDGES
4. MOUNT INSERTS AFTER FINISHING

NOTES

THE CONTENTS OF THIS DRAWING ARE THE EXCLUSIVE PROPERTY OF THE TECHNICAL MATERIEL CORP. ITS UNAUTHORIZED USE OR REPRODUCTION IN WHOLE OR IN PART IS STRICTLY FORBIDDEN.

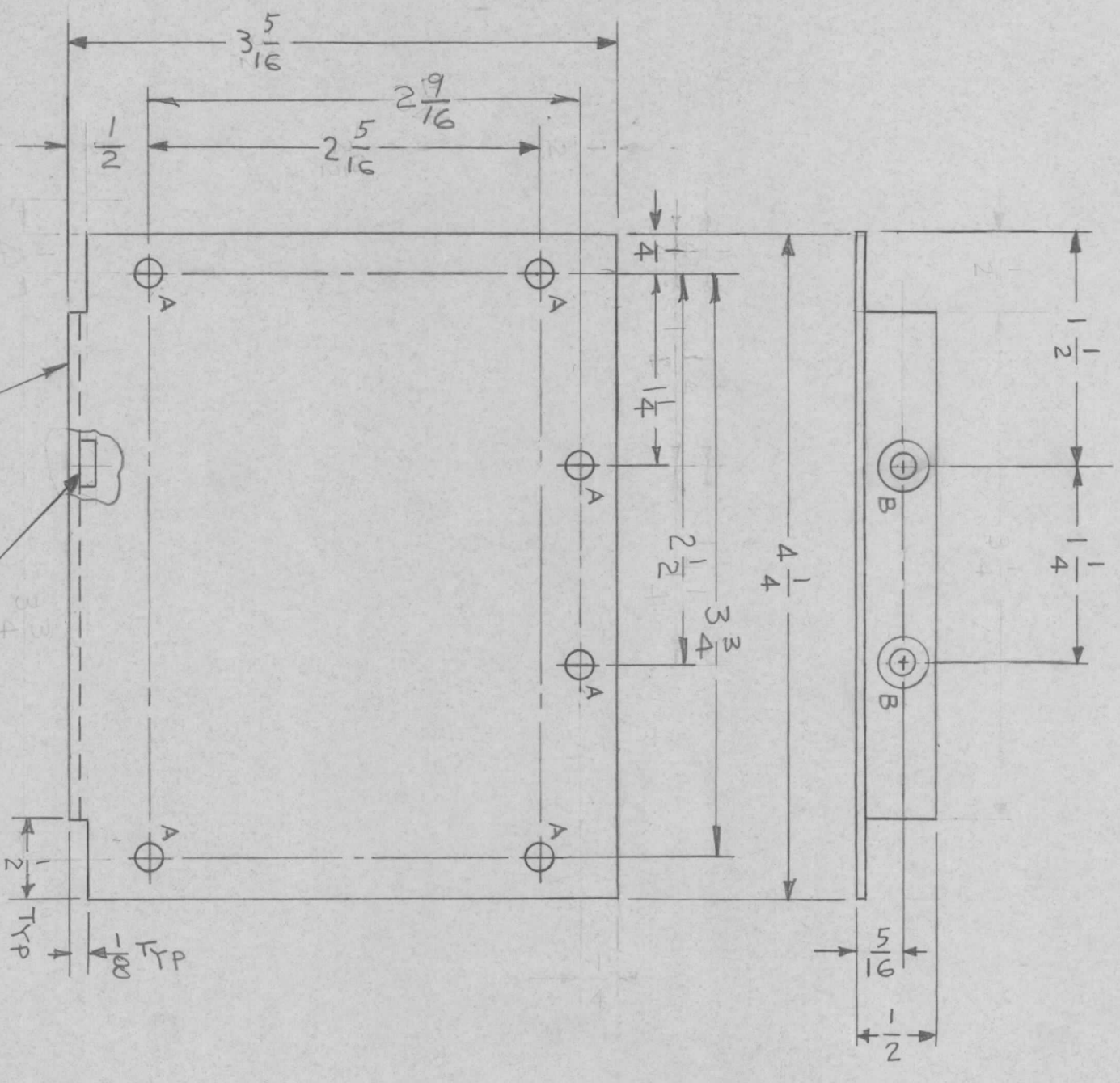
DATE	DATE	DATE	DATE
8-19-66	11-19-66	11-22-66	11-22-66
MS 5044			

- 1. USE MATERIAL THICKNESS FOR MAXIMUM RADIUS ON ALL BENDS
- 2. ALL ANGULAR BENDS 90 DEGREES
- 3. REMOVE ALL BURRS AND SHARP EDGES
- 4. MOUNT INSERTS AFTER FINISHING

UNLESS OTHERWISE SPECIFIED:

MARK TMC P/N 1/8 HIGH GOTHIC LETTERS W/LATEST REV. LETTER

1 MOUNT IN ALL "B" HOLES



MS 5045

SYM	DESCRIPTION	DATE	E.M.N. NO.	DRAFT	CHKD	APPD
X	EXP. RELEASE	8/19/66	X	JBC	JBC	
X1	COMPLETELY REVISED	8-22-66	X1	JBC	JBC	
Ø	ORIGINAL RELEASE FOR PRODUCTION	11-22-66	Ø	RME	RME	

REVISIONS

HOLE	DESCRIPTION	REQ.
A	11/64 DIA	6
B	.191-.194 DIA	2

QTY./UNIT	2	MODEL USED ON	TSWCA-3X	ASSY. NO.	BMA149
SCALE	1:1	THE CONTENTS OF THIS DRAWING ARE THE EXCLUSIVE PROPERTY OF THE TECHNICAL MATERIEL CORP. ITS UNAUTHORIZED USE OR REPRODUCTION IN WHOLE OR IN PART IS STRICTLY FORBIDDEN.			

REQ'D.	ITEM	PART NUMBER	DESCRIPTION	SYMBOL
2	1	NT-129-632-4	NUT, PLAIN, SPLINE	B

MATERIAL	.064 THK. ALUMINUM 5052-H32	TITLE	THE TECHNICAL MATERIEL CORP. MAMARONECK, NEW YORK
FINISH	S 404 YEL. IRIDITE	DRAWN	JBC
		CHECKED	JBC
		ELECT. DES.	JBC
		MECH. DES.	JBC

UNLESS OTHERWISE SPECIFIED DIMENSIONS ARE IN INCHES AND INCLUDE CHEMICALLY APPLIED OR PLATED FINISHES	TOLERANCES	FRACTIONS
DECIMALS	.X ± .05	± 1/64
	.XX ± .01	ANGLES
	.XXX ± .005	± 0° 30'

DATE 8-19-66
DATE 11-19-66
DATE 11-22-66
DATE 11/21/66

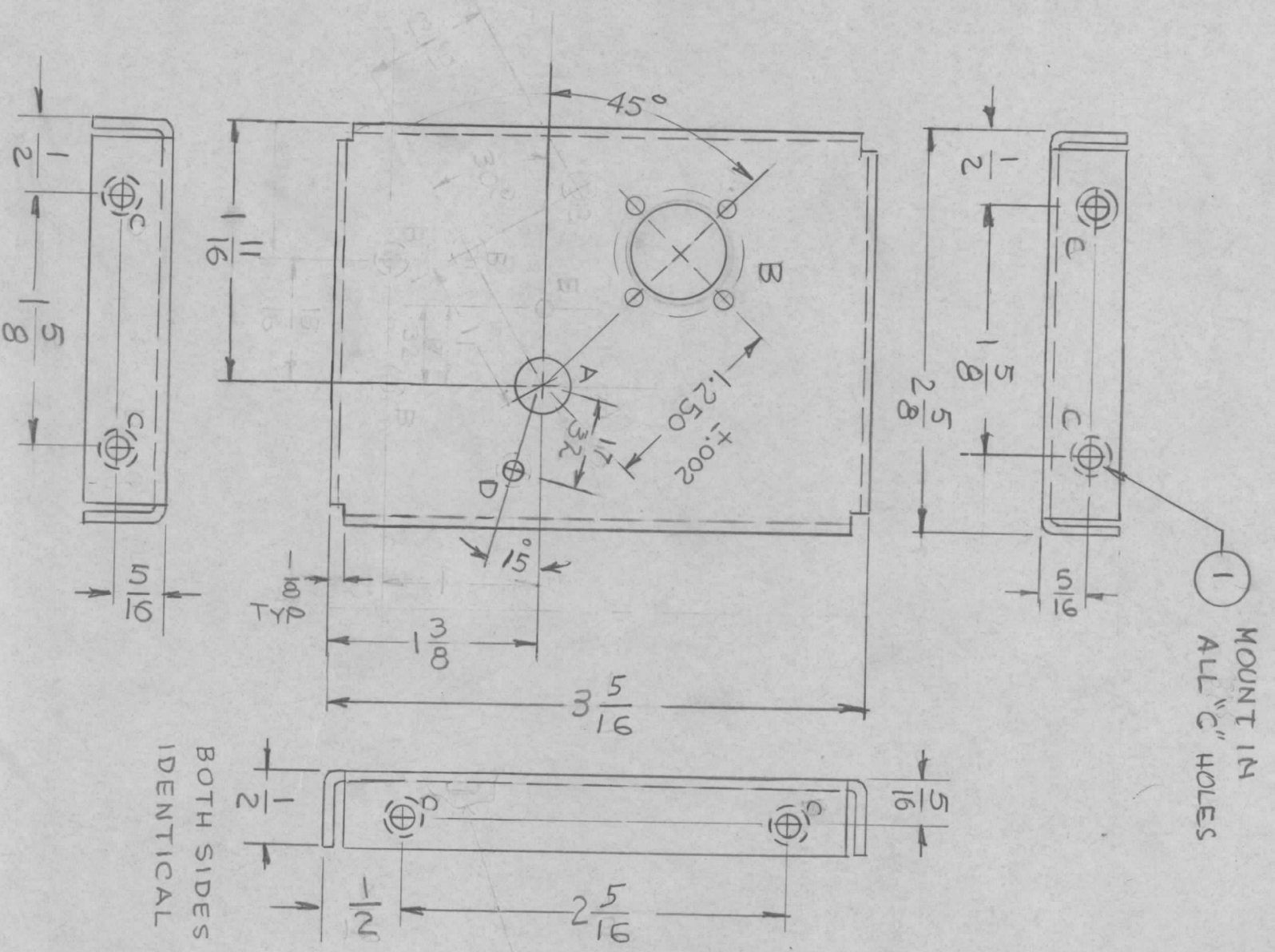
FINAL APPROVAL
MS 5045

DATE 11/21/66

REPROVEL. NO. 440H 23858

- UNLESS OTHERWISE SPECIFIED:
1. USE MATERIAL THICKNESS FOR MAXIMUM RADIUS ON ALL BENDS
 2. ALL ANGULAR BENDS 90 DEGREES
 3. REMOVE ALL BURRS AND SHARP EDGES
 4. MOUNT INSERTS AFTER FINISHING

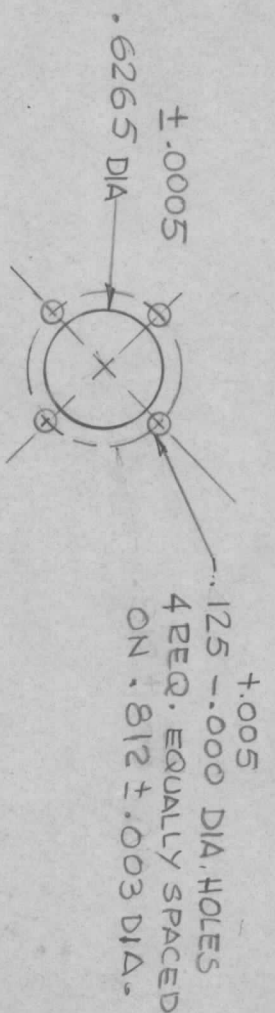
NOTES



SYM		DESCRIPTION		REVISIONS			
SYM	DESCRIPTION	DATE	E.M.N. NO.	DRAFT	CHKD	APPD	
X	EXP RELEASE	8-19-66	X	GDL			
X1	COMPLETELY REVISED	8-22-66	X1	JBC			
X2	'B' HOLES WERE 9/16 DIA.	8/13/66	-M-	Jc			
X3	4 .161-164 DIA HOLES DELETED	11-18-66	X3				
Ø	ORIGINAL RELEASE FOR PRODUCTION	12/2/66	Ø	CV			

MS 5046

HOLE	DESCRIPTION	REQ.
A	.375 DIA	1
B	SEE DETAIL B	1
C	.191 - .194 DIA	8
D	1/8 DIA	1
E	SEE DETAIL	
F	SEE DETAIL	



DETAIL "B"
(REQ.)

REF: LDZ149

REQ'D.	ITEM	PART NUMBER	DESCRIPTION	SYMBOL
4	2	NT129-440-4	NUT, PLAIN, SPLINE	
8	1	NT 129-632-4	NUT, PLAIN, SPLINE	c

LIST OF MATERIAL		TITLE	
MATERIAL	.064 THK ALUMINIUM 5052-H32	THE TECHNICAL MATERIEL CORP. MAMARONECK, NEW YORK	
FINISH	.5404 YEL. IRIDITE	PLATE, FRONT	

UNLESS OTHERWISE SPECIFIED		DIMENSIONS ARE IN INCHES AND INCLUDE CHEMICALLY APPLIED OR PLATED FINISHES	
DECIMALS	.X ± .05	FRACTIONS	± 1/64
	.XX ± .01	ANGLES	± 0° 30'
	.XXX ± .005	TOLERANCES	± 0° 30'

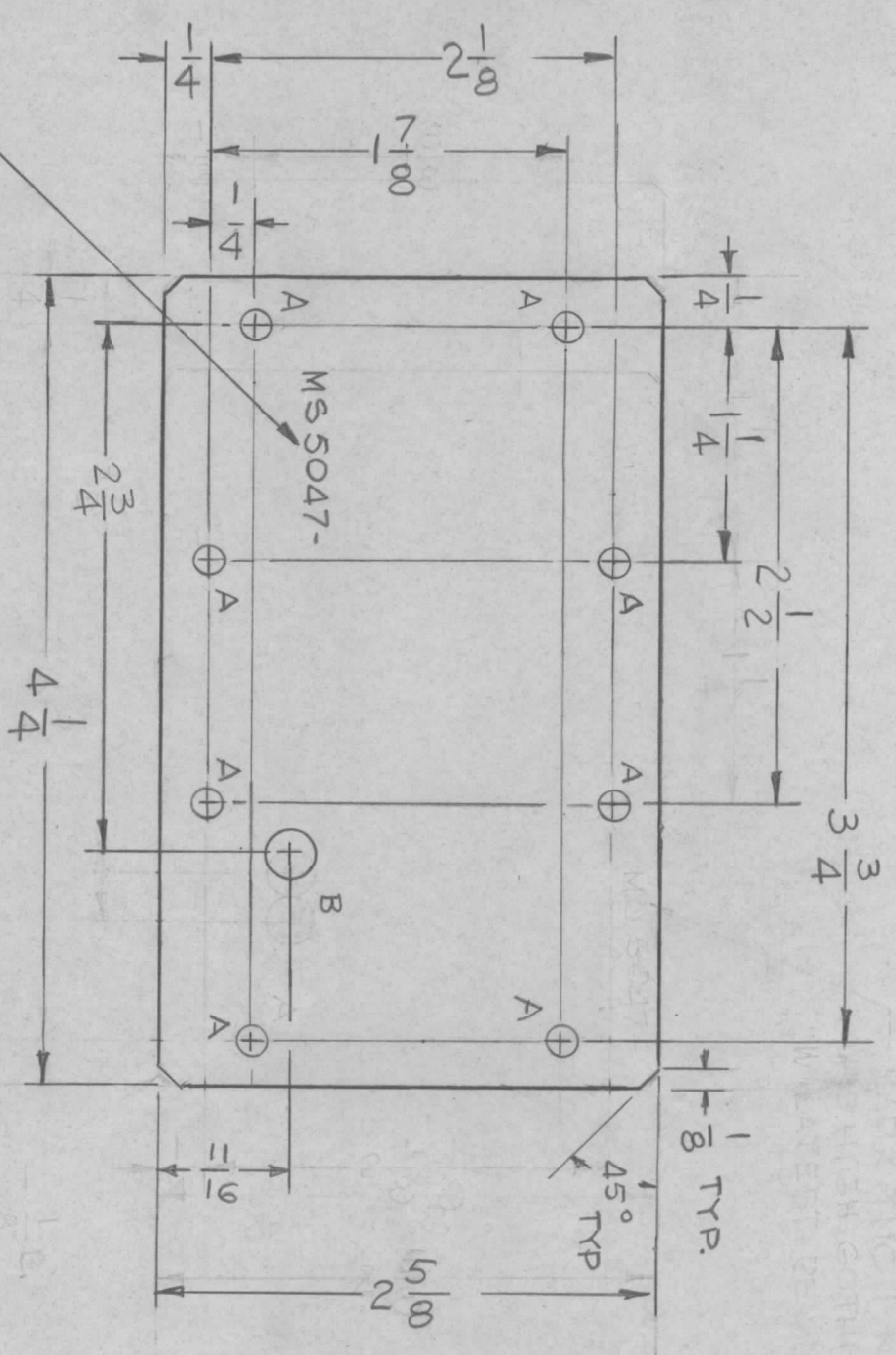
QTY./UNIT	MODEL USED ON	ASSY. NO.
1	SWCA-3K	BMA129

SCALE 1:1

THE CONTENTS OF THIS DRAWING ARE THE EXCLUSIVE PROPERTY OF THE TECHNICAL MATERIEL CORP. ITS UNAUTHORIZED USE OR REPRODUCTION IN WHOLE OR IN PART IS STRICTLY FORBIDDEN.

DRAWN	CHECKED	ELECT. DES.	MECH. DES.	DATE	DATE	DATE	DATE
GDL	Q/S			8-19-66	11-30-66		

FINAL APPROVAL	DATE	REV. LTR.
MS 5046	12/2/66	Ø



SYMBOL		DESCRIPTION		DATE	E.M.N. NO.	DRAFT	CHKD	APPD
X	EXP. RELEASE			8-20-66		GDL		
X1	ADDED "B" HOLE & DIMS			8-23-66	X1	JBC		
Ø	ORIGINAL RELEASE FOR PRODUCTION			11-22-66	Ø	RME		

HOLE	DESCRIPTION	REQ.
A	11/64 DIA.	8
B	1/4 DIA.	1

REF: LD2151.

REQ'D.	ITEM	PART NUMBER	DESCRIPTION	SYMBOL
	F. BUDETTI			

MATERIAL	FINISH	TITLE
.064 THK. ALUMINUM 5052-H32	SA04 YEL. IRIDITE	PLATE, COVER

UNLESS OTHERWISE SPECIFIED	TOLERANCES	DECIMALS	FRACTIONS
DIMENSIONS ARE IN INCHES AND INCLUDE CHEMICALLY APPLIED OR PLATED FINISHES		X ± .05 .XX ± .01 .XXX ± .005	± 1/64 ANGLES ± 0° 30'

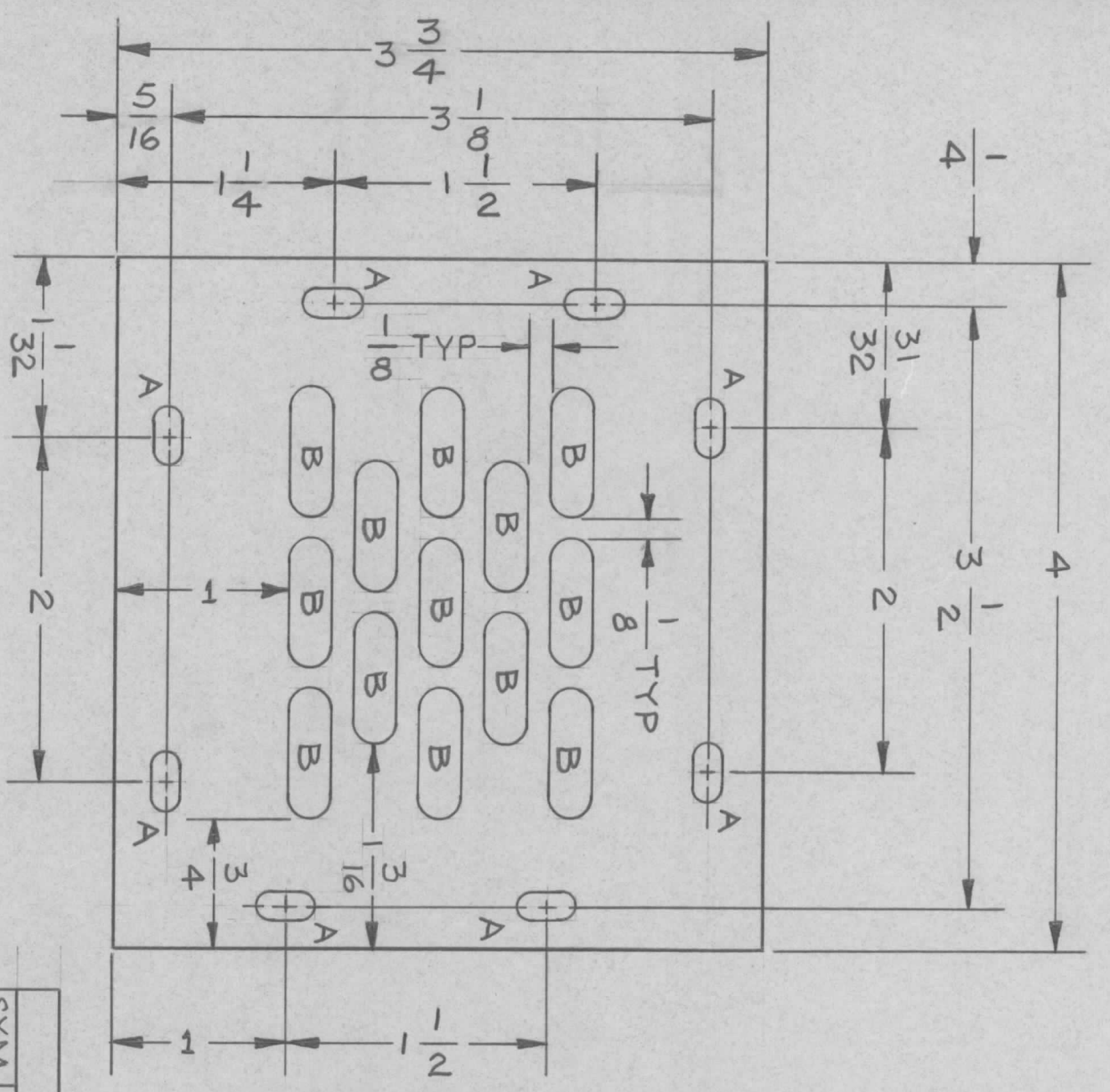
QTY./UNIT	1	MODEL USED ON	SWCA-3K	ASSY. NO.	BMA149
SCALE	1:1	CODE	A		

NOTES

THE CONTENTS OF THIS DRAWING ARE THE EXCLUSIVE PROPERTY OF THE TECHNICAL MATERIEL CORP. ITS UNAUTHORIZED USE OR REPRODUCTION IN WHOLE OR IN PART IS STRICTLY FORBIDDEN.

MS5050

REVISIONS		DATE	E.M.N. NO.	DRAFT	CHKD	APPD
X1	MODEL WAS "DDR-7M"	11/10/66	—	#1A		
Ø	ORIGINAL RELEASE FOR PRODUCTION	12/21/66	Ø	CV		



SYM	DESCRIPTION	REQ'D
A	11/64 X 1/32	8
B	1/4 X 3/4	13

REQ'D.	ITEM	PART NUMBER	DESCRIPTION	SYMBOL
LIST OF MATERIAL				

MATERIAL
 .051 ALUMINUM 5052-H32
FINISH
 S404 YELLOW IRIDITE

TITLE
 COVER, RELAY CHASSIS

THE TECHNICAL MATERIEL CORP.
 MAMARONECK, NEW YORK

UNLESS OTHERWISE SPECIFIED DIMENSIONS ARE IN INCHES AND INCLUDE CHEMICALLY APPLIED OR PLATED FINISHES		TOLERANCES	
DECIMALS	X ± .05	FRACTIONS	± 1/64
	.XX ± .01	ANGLES	± 0° 30'
	.XXX ± .005		

QTY./UNIT	1	MODEL USED ON	DDR181M	ASSY. NO.	AR181
SCALE	1:1	CODE	DDR17M		

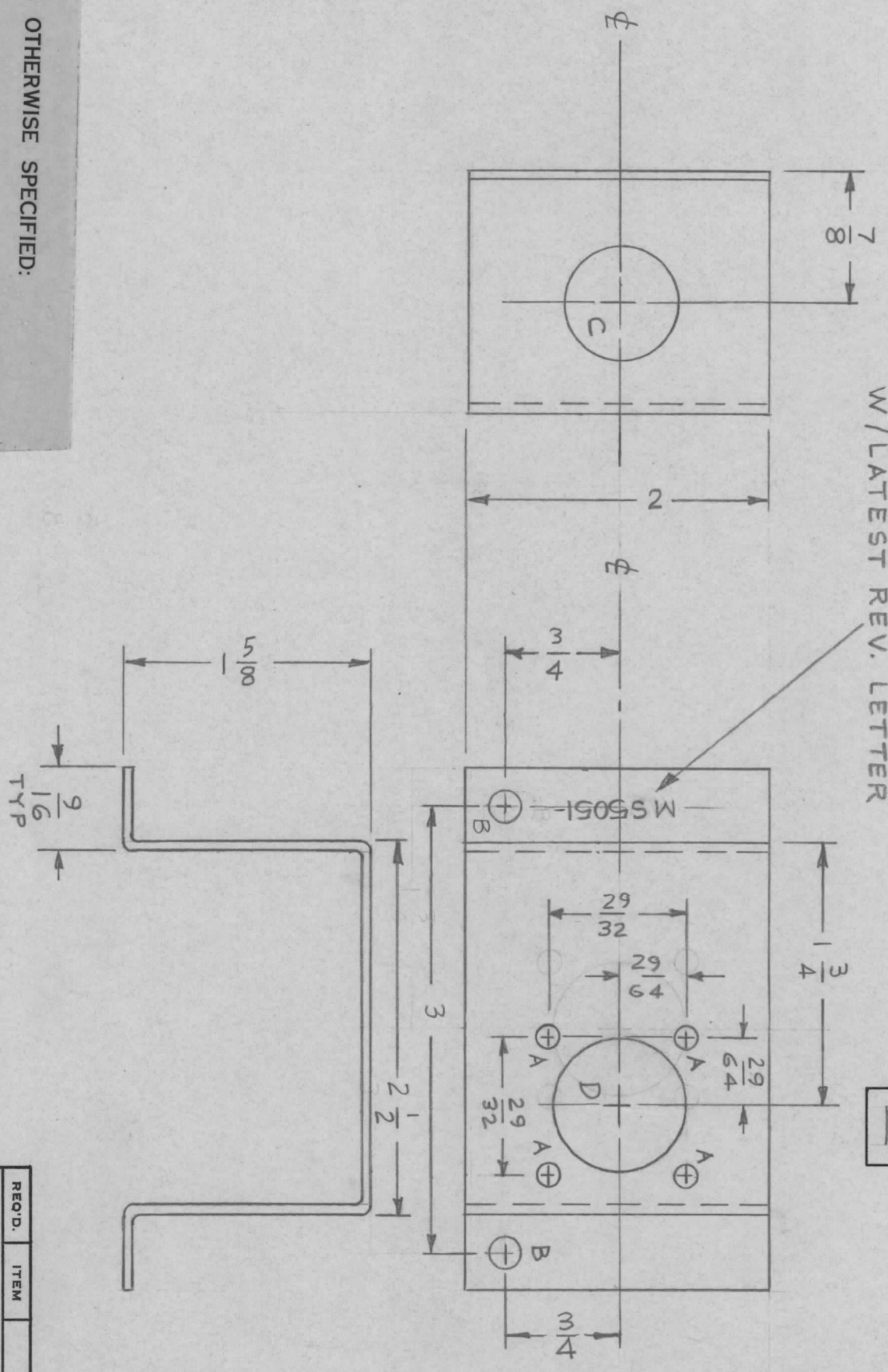
NOTES

THE CONTENTS OF THIS DRAWING ARE THE EXCLUSIVE PROPERTY OF THE TECHNICAL MATERIEL CORP. ITS UNAUTHORIZED USE OR REPRODUCTION IN WHOLE OR IN PART IS STRICTLY FORBIDDEN.

REVISIONS		DATE	E.M.N. NO.	DRAFT	CHKD	APPD
X	EXP RELEASE	8-26-64	X	JBC	JBC	JBC
Q	ORIGINAL RELEASE FOR PRODUCTION	12.1.66		WFO	JBC	JBC

MS5051

MARK TMC P/N 1/8 HIGH GOTHIC
W/LATEST REV. LETTER



HOLE	DESCRIPTION	REQ.
A	5/32 DIA	4
B	13/64 DIA	2
C	3/4 DIA	1
D	7/8 DIA	1

REF: LD2153

- UNLESS OTHERWISE SPECIFIED:
1. USE MATERIAL THICKNESS FOR MAXIMUM RADIUS ON ALL BENDS
 2. ALL ANGULAR BENDS 90 DEGREES
 3. REMOVE ALL BURRS AND SHARP EDGES

QTY./UNIT	RAK 110-2	MODEL USED ON	BMA157	ASS'Y. NO.
SCALE	1:1	CODE	A	

THE CONTENTS OF THIS DRAWING ARE THE EXCLUSIVE PROPERTY OF THE TECHNICAL MATERIEL CORP. ITS UNAUTHORIZED USE OR REPRODUCTION IN WHOLE OR IN PART IS STRICTLY FORBIDDEN.

REQ'D.	ITEM	PART NUMBER	DESCRIPTION	SYMBOL
	BUDETTI			

MATERIAL	.064 THK. ALUM.	TITLE	BRACKET, FAN CAPACITOR
FINISH	YELLOW IRIDITE		

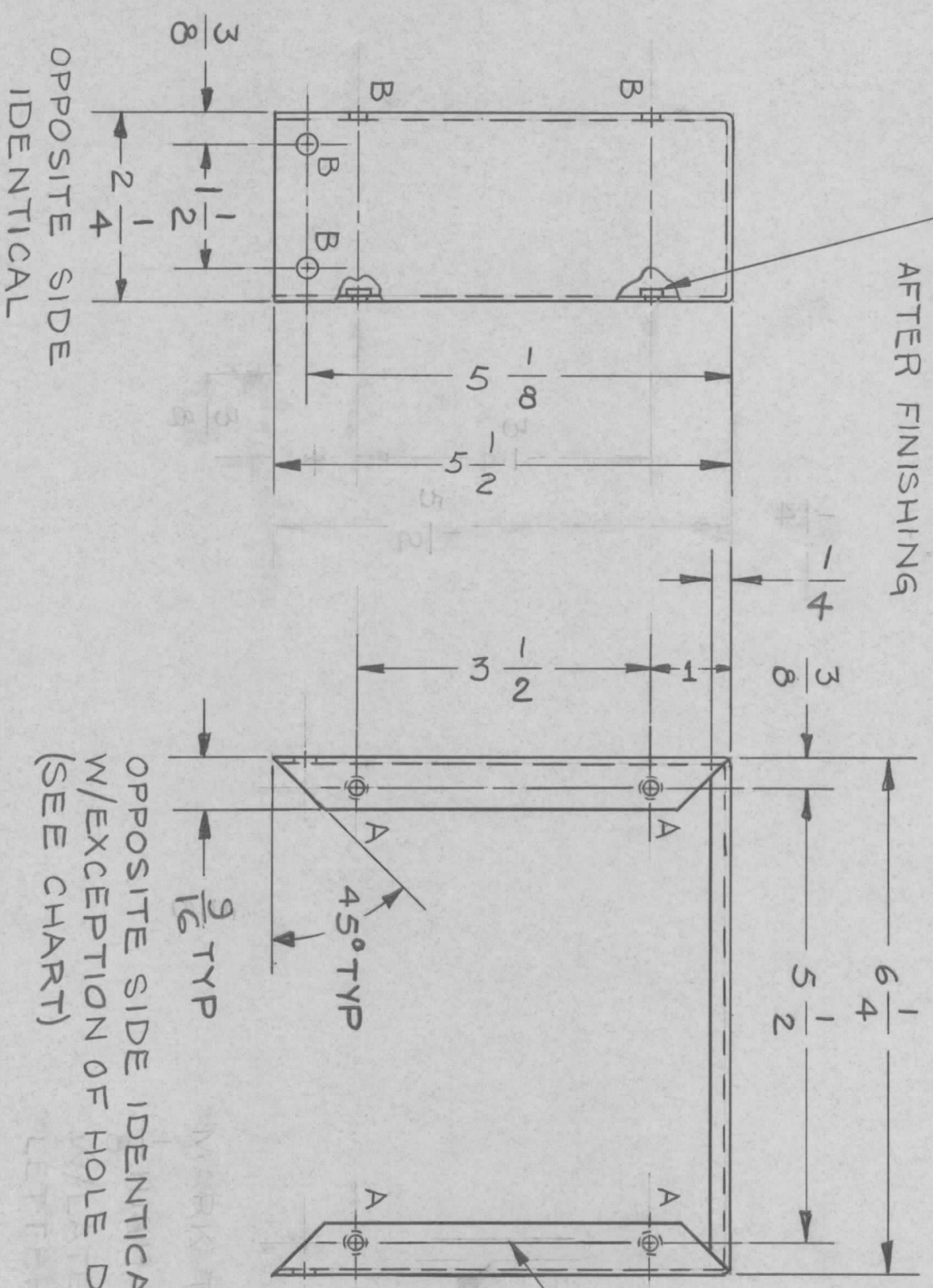
UNLESS OTHERWISE SPECIFIED DIMENSIONS ARE IN INCHES AND INCLUDE CHEMICALLY APPLIED OR PLATED FINISHES	DRAWN	JBC	DATE	8-26-64	FINAL APPROVAL	DATE	12/1/64
DECIMALS .X ± .05 .XX ± .01 .XXX ± .005	CHECKED	JBC	DATE				
FRACTIONS ± 1/64 ± 1/32 ± 0° 30'	ELECT. DES.	JBC	DATE	1/26/64	MS5051		
	MECH. DES.	JBC	DATE				

NOTES

REVISIONS		DATE	E.M.N. NO.	DRAFT	CHKD	APPD
Ø	ORIGINAL RELEASE FOR PRODUCTION	9-1-66	Ø	RME		

MS 5059

1 MOUNTED IN ALL "A" HOLES AS SHOWN AFTER FINISHING



OPPOSITE SIDE IDENTICAL W/EXCEPTION OF HOLE DIA. (SEE CHART)

OPPOSITE SIDE IDENTICAL

SYM	IDES	REQ'D
A	.191-.194	4
B	1/64 DIA	8

REQ'D.	ITEM	PART NUMBER	DESCRIPTION	SYMBOL
4	1	NT-129-632-3	NUT, ROUND, SWAGE TYPE	A

LIST OF MATERIAL		TITLE	
MATERIAL	.062 ALUMINUM 5052-H32	CHASSIS, WRAP AROUND	
FINISH	S404 YEL. IRIDITE	THE TECHNICAL MATERIEL CORP.	
	5052-H32	MAMARONECK, NEW YORK	
	Ø SLITS TMC GRAY		

UNLESS OTHERWISE SPECIFIED DIMENSIONS ARE IN INCHES AND INCLUDE CHEMICALLY APPLIED OR PLATED FINISHES		DRAWN		DATE		FINAL APPROVAL		DATE	
DECIMALS	.X ± .05	C.E.D.	8-18-66	8-18-66		[Signature]		8-18-66	
	.XX ± .01	CHECKED	[Signature]	8/31/66		[Signature]		8/31/66	
	.XXX ± .005	ELECT. DES.	[Signature]			[Signature]			
		Mech. Des.	[Signature]			[Signature]			
						[Signature]			

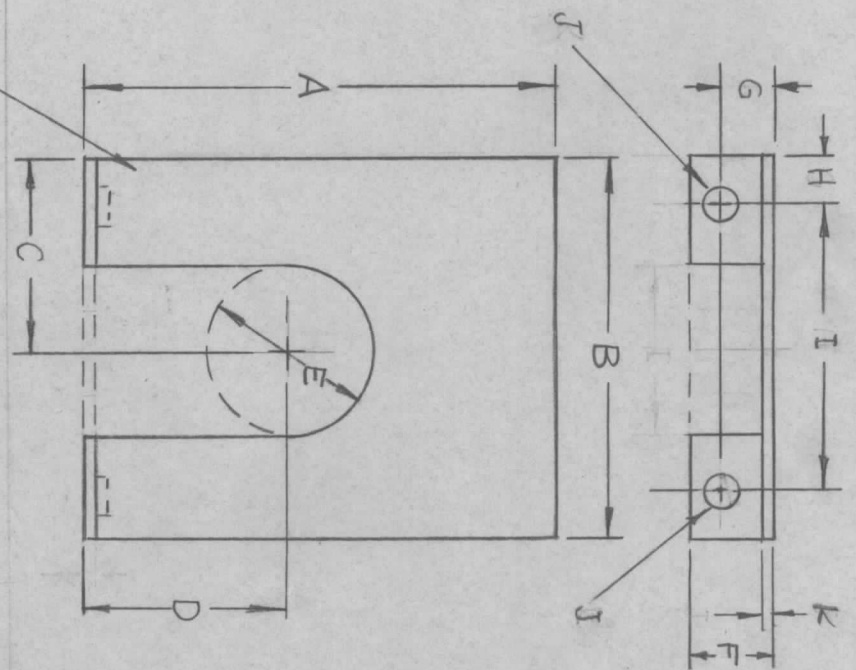
QTY./UNIT	MODEL USED ON	ASSY. NO.
1	KIT 300	

NOTES

REVISIONS		DATE	E.M.N. NO.	DRAFT	CHKD	APPD
X	EXP. RELEASE	7-30-66	X	MS		
X	'A','B','C','I' DIM. REVISED	8/12/67	X	MS		
Ø	ORIGINAL RELEASE FOR PRODUCTION	8/25/69	Ø	MS		

TMC P/N	A	B	C	D	E	F	G	H	I	J	K	MATERIAL	FINISH	MODEL USED ON
MS5061-1	3	2 1/4	1 1/8	1-1/16	7/8 SLOT	7/16	9/32	1/4	1 3/4	.191-.194 *	.051	ALUM, 5052-H32	S404 YEL. IRIDITE	TFP.15K
MS5061-2	2 5/16	2	1	1-1/16	7/8 SLOT	7/16	9/32	1/4	1-1/2	.191-.194 *	.051	ALUM, 5052-H32	S404 YEL. IRIDITE	

MS5061



REQ'D.	ITEM	PART NUMBER	DESCRIPTION	SYMBOL
	F. BUDETTI		LIST OF MATERIAL	

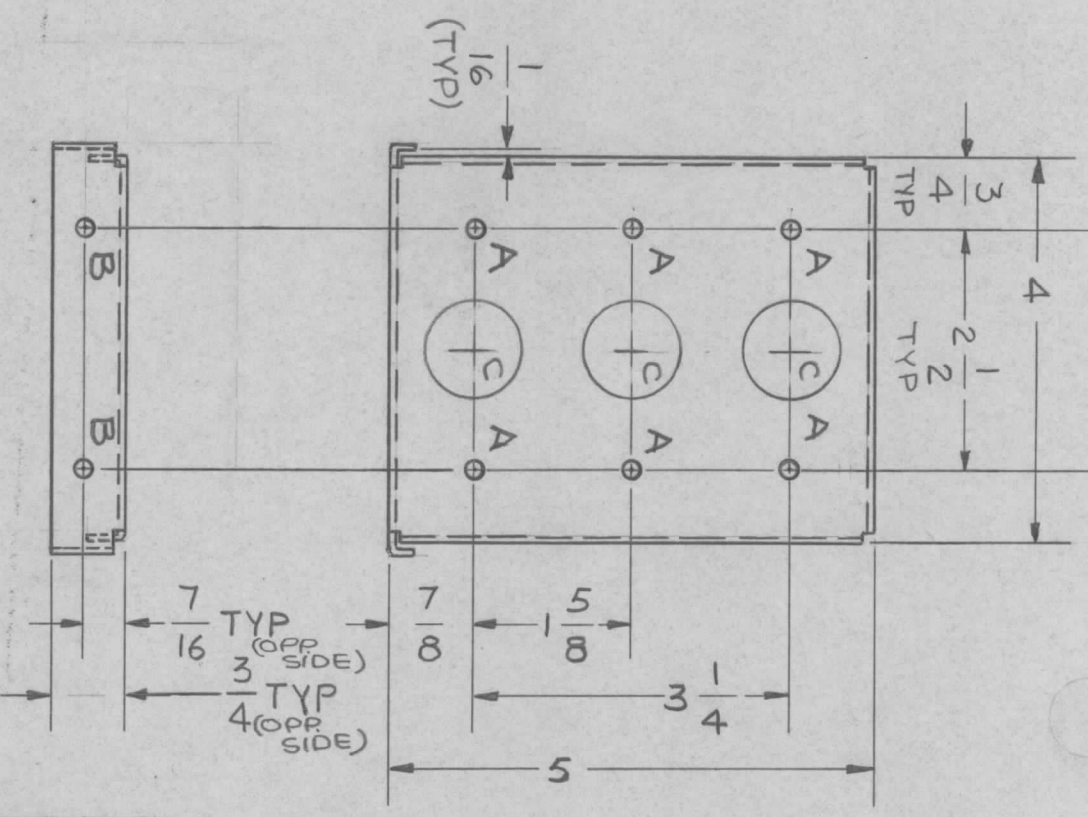
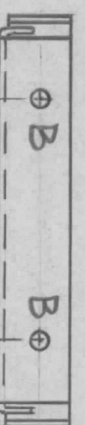
MATERIAL	FINISH	TITLE
SEE CHART	SEE CHART	THE TECHNICAL MATERIEL CORP. MAMARONECK, NEW YORK
SEE CHART	SEE CHART	SHIELD, BRACKET

QTY./UNIT	MODEL USED ON	ASSY. NO.
SCALE S401-451 S401- S401-	CODE A	STANDARD

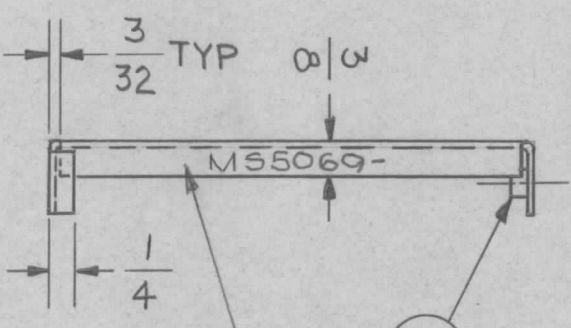
UNLESS OTHERWISE SPECIFIED DIMENSIONS ARE IN INCHES AND INCLUDE CHEMICALLY APPLIED OR PLATED FINISHES	DECIMALS .X ± .05 .XX ± .01 .XXX ± .005	TOLERANCES	FRACTIONS ± 1/64 ANGLES ± 0° 30'
DRAWN	DATE	FINAL APPROV'D	DATE
CHECKED	DATE		
ELECT. DES.	DATE		
MECH. DES.	DATE		
	DATE	MS5061	DATE
	DATE		REV. LTR.

* REF:
TMC DWG NT 129

NOTES



NOTE:
MARK PARTING
PER TMC SPEC S127



OPPOSITE SIDE SAME

1 MOUNT IN "B" HOLES
AFTER FINISHING

MARK TMC P/N 1/8 HIGH
GOTHIC W/LATEST
REV LETTER
(THIS SIDE ONLY)

MS5069

REVISIONS		DATE	E.M.N. NO.	DRAFT	CHKD	APPD
X	EXPERIMENTAL RELEASE	9/2/66	X.	CED		
Ø	ORIGINAL RELEASE FOR PRODUCTION	3-20-67		L.A.K.		

HOLE CHART			
SYM	DESCRIPTION	REQ'D	
A	11/64 DIA	6	
B	.191-.194 DIA	4	
C	1" DIA	3	

- UNLESS OTHERWISE SPECIFIED:
1. USE MATERIAL THICKNESS FOR MAXIMUM RADIUS ON ALL BENDS
 2. ALL ANGULAR BENDS 90 DEGREES
 3. REMOVE ALL BURRS AND SHARP EDGES
 4. MOUNT INSERTS AFTER FINISHING

REF: LD2157 (NOTE (2) BRACKETS REQ/UNIT, ONLY (1) TO BE LETTERED.)

REQ'D.	ITEM	PART NUMBER	DESCRIPTION	SYMBOL
4	1	NT-129-632-4	NUT, ROUND, SWAGE TYPE	

LIST OF MATERIAL

MATERIAL
BUTLER
.063 ALUMINUM
5052-H32

FINISH
S404 YEL IRIDITE

TITLE
BRACKET, MOUNTING, RESISTOR

THE TECHNICAL MATERIEL CORP.
MAMARONECK, NEW YORK

QTY./UNIT	2	PSP 350C	MODEL USED ON	ASSY. NO.
SCALE	1:2		CODE	

THE CONTENTS OF THIS DRAWING ARE THE EXCLUSIVE PROPERTY OF THE TECHNICAL MATERIEL CORP. ITS UNAUTHORIZED USE OR REPRODUCTION IN WHOLE OR IN PART IS STRICTLY FORBIDDEN.

UNLESS OTHERWISE SPECIFIED DIMENSIONS ARE IN INCHES AND INCLUDE CHEMICALLY APPLIED OR PLATED FINISHES		DECIMALS		TOLERANCES		FRACTIONS	
X ± .05		± 1/64		± .005		± 0° 30'	
XX ± .01							
.XXX ± .005							

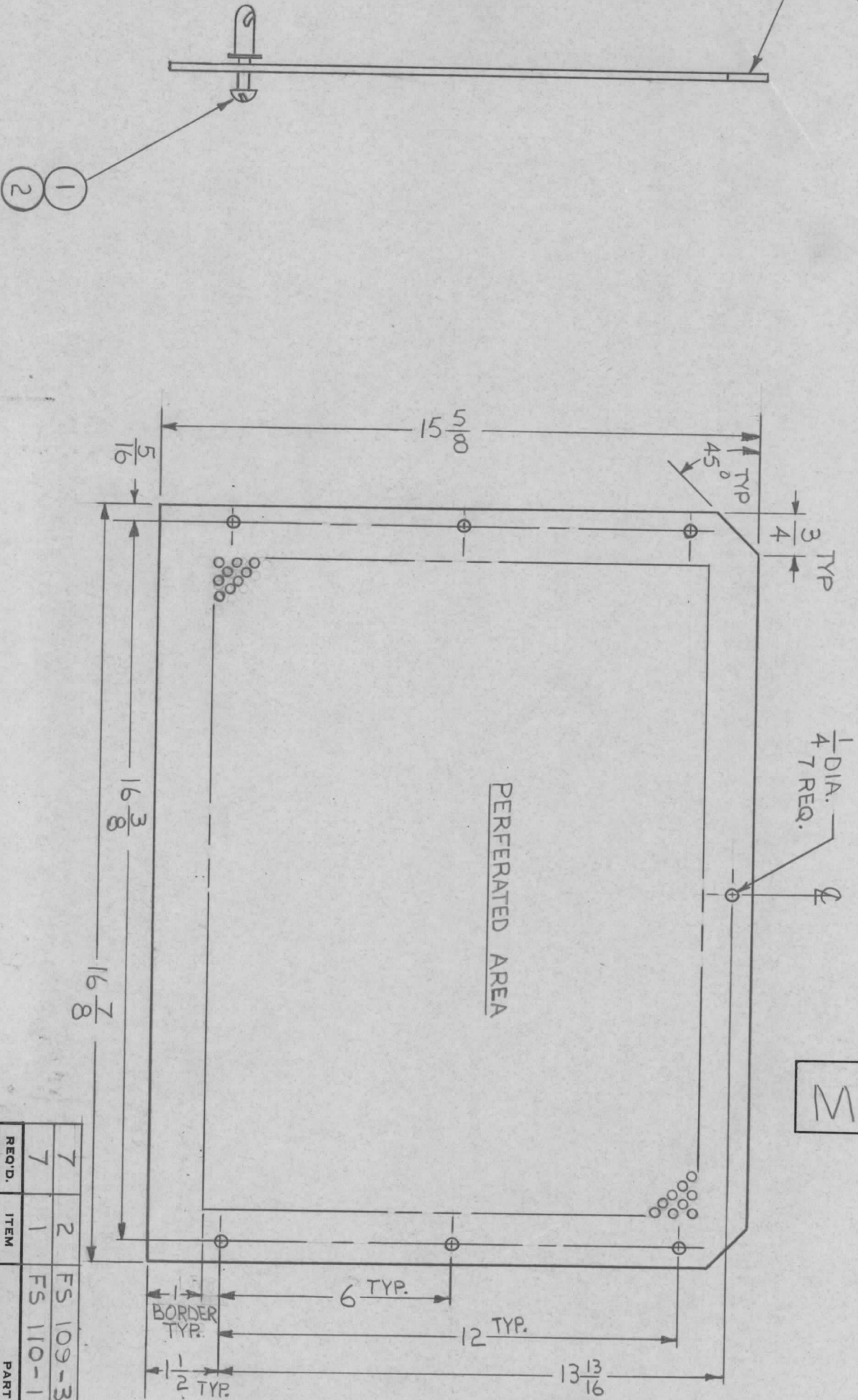
DRAWN C.E. DUDAS
CHECKED [Signature]
ELECT. DES. [Signature]
MECH. DES. [Signature]

DATE 9/2/66
DATE [Signature]
DATE [Signature]

FINAL APPROVAL [Signature]
MS 5069
SHEET [Signature]

NOTES

MARK TMC PART NO.
1/8 HIGH GOTHIC WITH
LATEST REVISION LETTER.



MS 5077

REVISIONS		DATE	E.M.N. NO.	DRAFT	CHKD	APPD
Ø	ORIGINAL RELEASE FOR PRODUCTION	12-15-66	Ø	RME		

NOTE: HARDWARE TO BE SUPPLIED
AND ASSEMBLED BY TMC.

NOTE: PERFORATION .072 DIA. HOLES
ON 1/8 CENTERS STAGGERED,

QTY./UNIT	PSP 3502	MODEL USED ON	ASSY. NO.
SCALE	DO NOT SCALE	CODE	

UNLESS OTHERWISE SPECIFIED DIMENSIONS ARE IN INCHES AND INCLUDE CHEMICALLY APPLIED OR PLATED FINISHES	TOLERANCES	FRACTIONS
DECIMALS X ± .05 XX ± .01 XXX ± .005		± 1/64 ANGLES ± 0° 30'

MATERIAL .051 THK, ALUMINUM, 5052-H32	TITLE COVER, BOTTOM	DRAWN RME	DATE 9-7-66	FINAL APPROVAL	DATE 12/15/66
FINISH S404 YELLOW IRIDIOTE		CHECKED	DATE		
		ELECT. DES.	DATE		
		MECH. DES.	DATE		

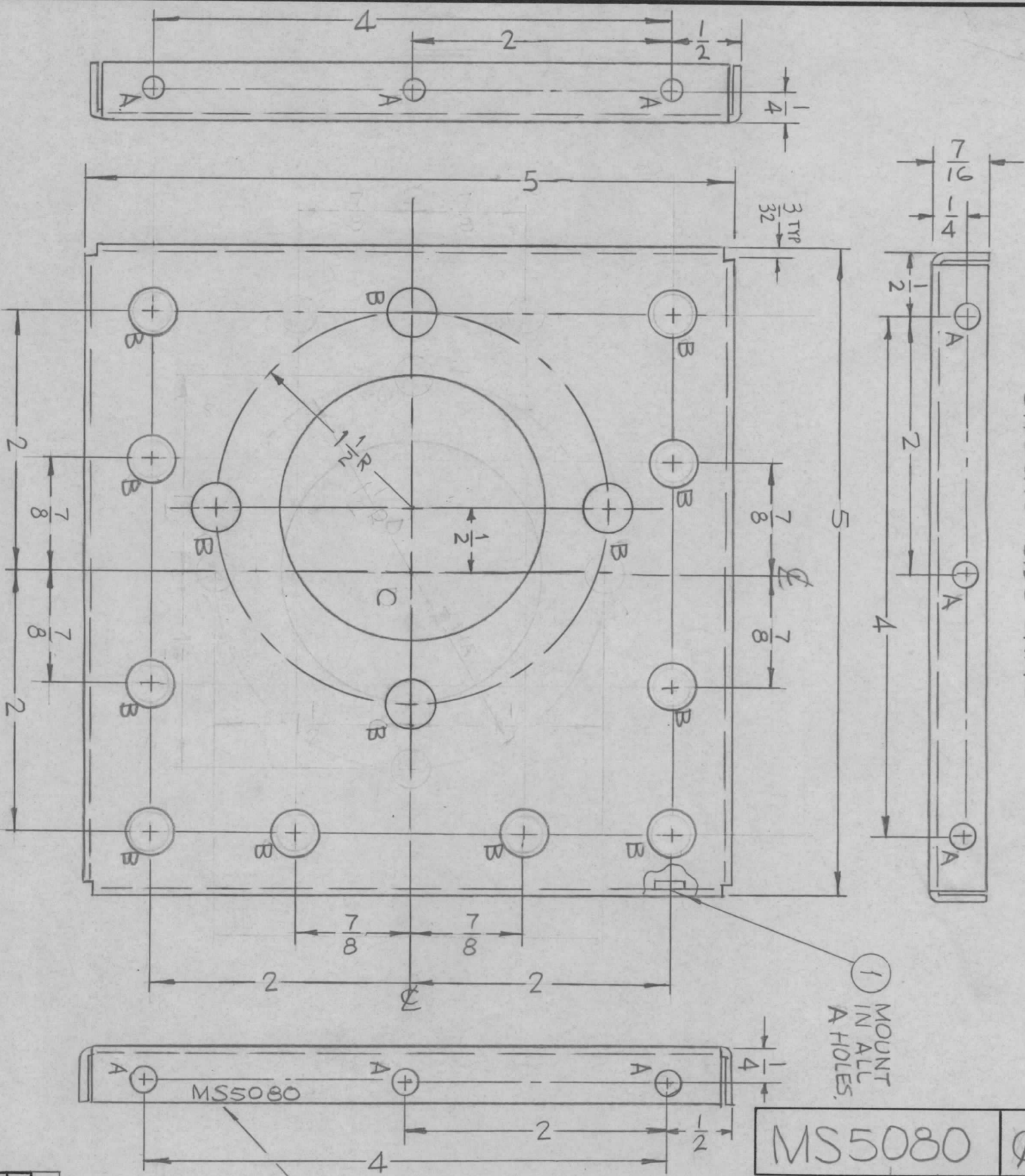
THE TECHNICAL MATERIEL CORP.
MAMARONECK, NEW YORK

LIST OF MATERIAL SK 3187-19

REQ'D.	ITEM	PART NUMBER	DESCRIPTION	SYMBOL
7	2	FS 109-3	RING, RETAINING	
7	1	FS 110-1	STUD, TURNLOCK	

NOTES

OPPOSITE SIDE SAME



MS5080

SYM	DESCRIPTION	DATE	EM.N. NO.	DRAFT	CHKD	APPD
X	EXP. RELEASE	8-25-66	X	MS		RC
X1	RELOC. "D" HOLE & 4 RELATED "C" HOLES. DELETED 2 "C" HOLES.	12-8-66	X1	RME		RC
X2	(3) 11/64 HOLES CHANGED TO .191-.194 ORIGINAL RELEASE FOR PRODUCTION	12-19-66	X2	MS		RC
Ø		1/11/67	Ø	CV		RC

HOLE	DESCRIPTION	REQD
A	.191-.194 DIA.	12
B	3/8 DIA.	14
C	2" DIA.	1

MARK TMC P/N HIGH GOTHIC 8/LATEST REV. W/LATEST REV. LETTER.

REQ'D.	ITEM	PART NUMBER	DESCRIPTION	SYMBOL
12	1	NT129-632-4	NUT, PLAIN, SPLINE	A

F. BUDETTI
 MATERIAL
 .064 THICK ALUMINUM
 5052-H32

FINISH COPPER FLASH
 S245 SILVER PLATE
 S423 SILVER KOTE

TITLE
 PLATE, END, FIXED FILTER
 THE TECHNICAL MATERIEL CORP.
 MAMARONECK, NEW YORK

UNLESS OTHERWISE SPECIFIED	DRAWN	CHECKED	ELECT. DES.	MECH. DES.	DATE	DATE	DATE	DATE	DATE	DATE
DIMENSIONS ARE IN INCHES AND INCLUDE CHEMICALLY APPLIED OR PLATED FINISHES										
DECIMALS										
.X ± .05										
.XX ± .01										
.XXX ± .005										
FRACTIONS										
± 1/64										
ANGLES										
± 0° 30'										

- UNLESS OTHERWISE SPECIFIED:
1. USE MATERIAL THICKNESS FOR MAXIMUM RADIUS ON ALL BENDS
 2. ALL ANGULAR BENDS 90 DEGREES
 3. REMOVE ALL BURRS AND SHARP EDGES
 4. MOUNT INSERTS AFTER FINISHING

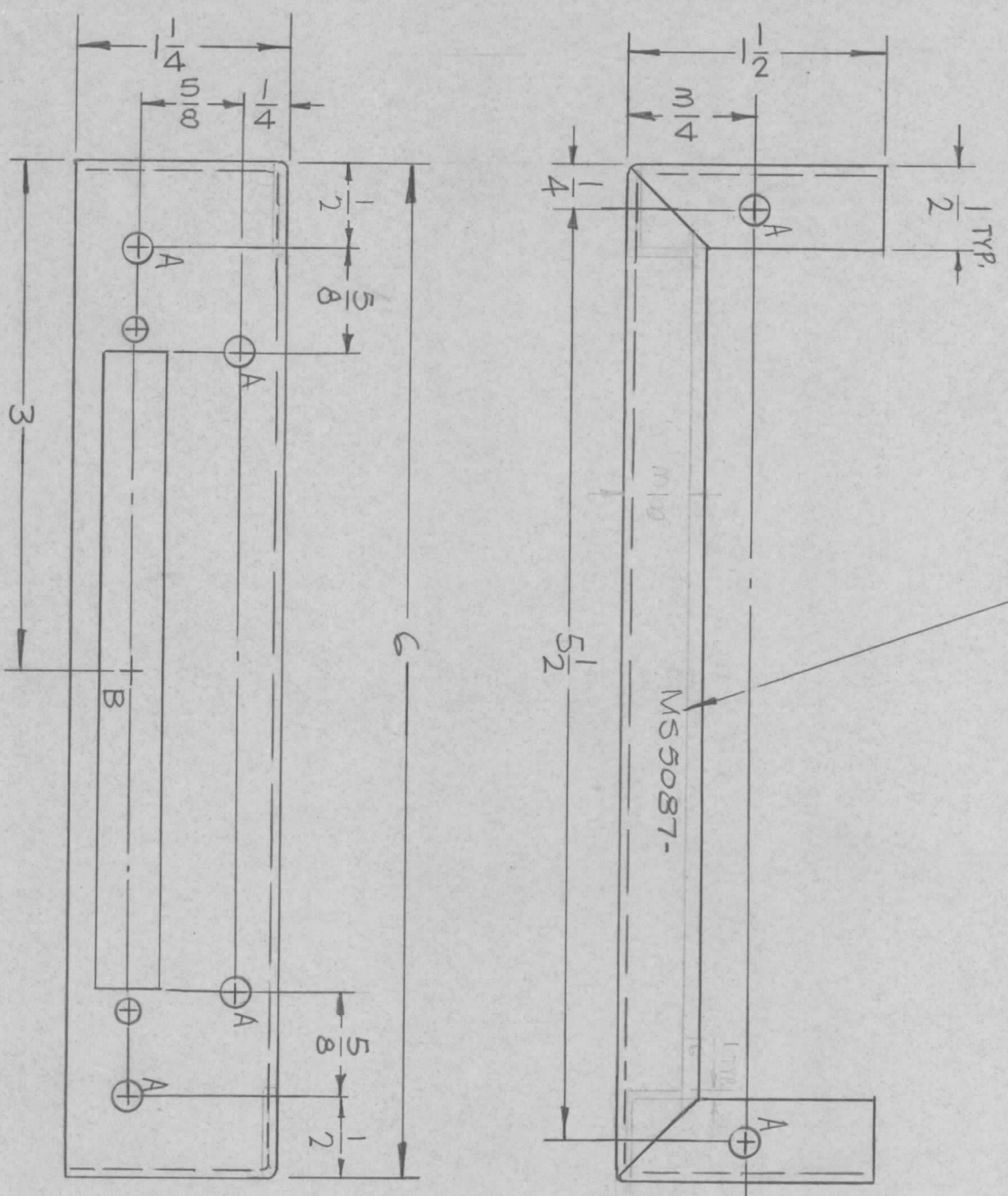
NOTES

QTY./UNIT	1	MODEL USED ON	LPFA-10K	ASS'Y. NO.	
SCALE	1:1	CODE	A		

THE CONTENTS OF THIS DRAWING ARE THE EXCLUSIVE PROPERTY OF THE TECHNICAL MATERIEL CORP. ITS UNAUTHORIZED USE OR REPRODUCTION IN WHOLE OR IN PART IS STRICTLY FORBIDDEN.

UNLESS OTHERWISE SPECIFIED:
 1. USE MATERIAL THICKNESS FOR MAXIMUM RADIUS ON ALL BENDS
 2. ALL ANGULAR BENDS 90 DEGREES
 3. REMOVE ALL BURRS AND SHARP EDGES

NOTES



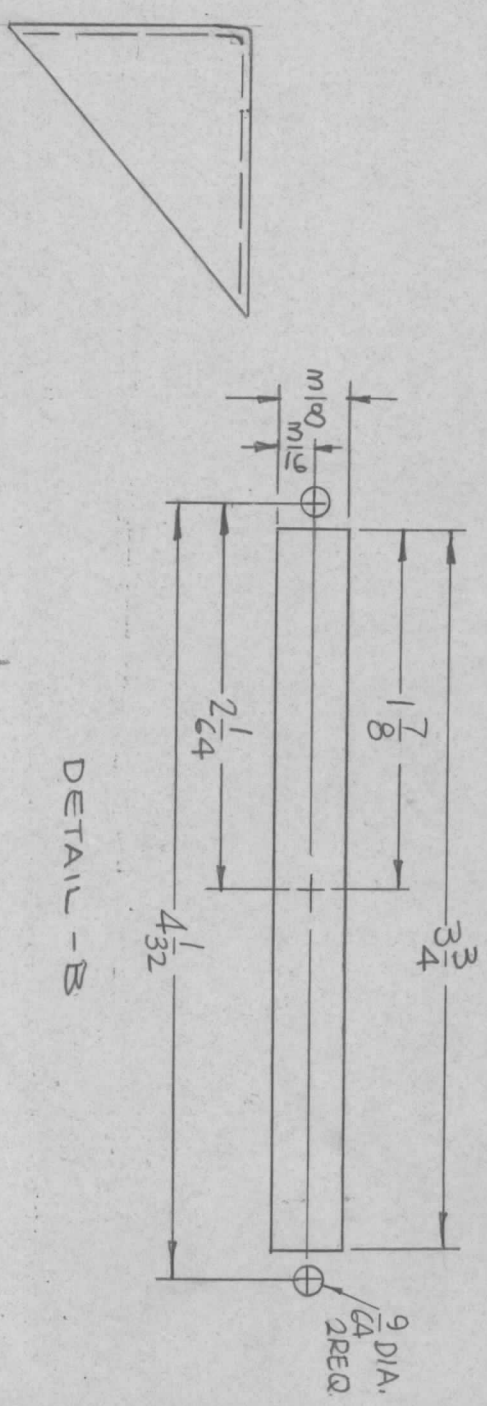
MARK TMC P/N
 1/8 HIGH GOTHIC W/LATEST
 B REV. LETTER.

MS5087

SYM	DESCRIPTION	DATE	E.M.N. NO.	DRAFT	CHKD	APPD
X	EXP. RELEASE	9-10-66	X	MS	MS	AA
X1	LIP REVISED WAS 3/8	9-10-66	X1	MS	MS	AA
Ø	ORIGINAL RELEASE FOR PRODUCTION	9/23/67	Ø	CV		

REVISIONS

HOLES:
 A - 11/64 DIA. (6 REQ.)
 B - SEE DETAIL (1 REQ.)



FOR REF ONLY SEE LD2142

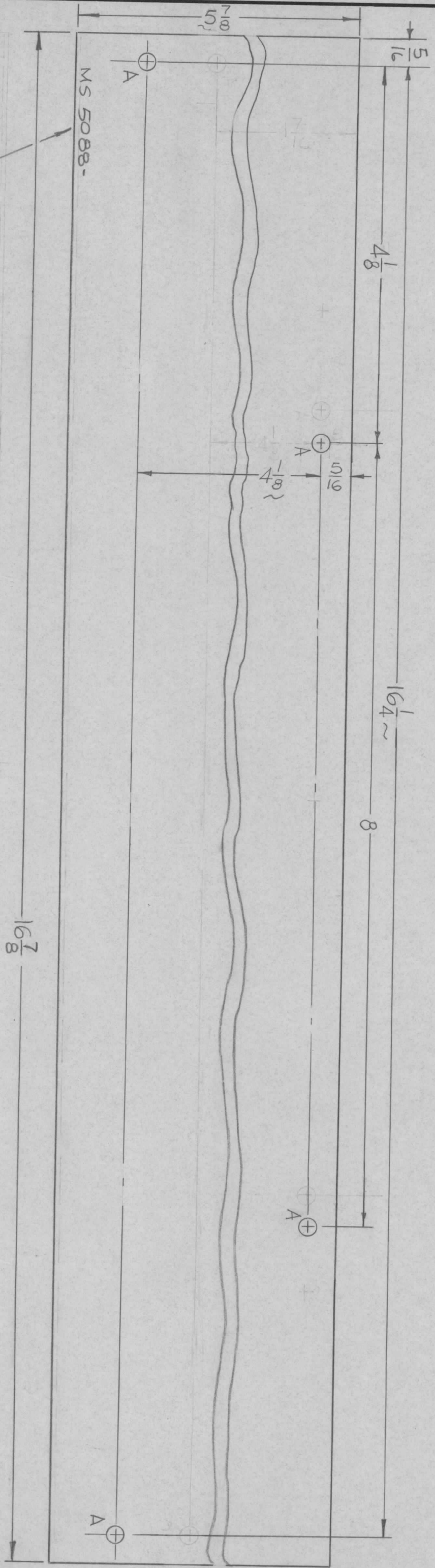
REQ'D. ITEM	PART NUMBER	DESCRIPTION	SYMBOL
F. BUDETTI		THE TECHNICAL MATERIEL CORP.	
		MAMARONECK, NEW YORK	
		BRACKET, MTG CONNECTOR	

REVISIONS	DATE	DESCRIPTION
1	9-10-66	EXP. RELEASE
2	9-10-66	LIP REVISED WAS 3/8
3	9/23/67	ORIGINAL RELEASE FOR PRODUCTION

QTY./UNIT	1	SCALE	1:1
MODEL USED ON	SWCB-3K	CODE	A
ASSY. NO.			

UNLESS OTHERWISE SPECIFIED	DIMENSIONS ARE IN INCHES AND INCLUDE CHEMICALLY APPLIED OR PLATED FINISHES
DECIMALS	TOLERANCES
.X ± .05	± 1/64
.XX ± .01	ANGLES ± 0° 30'
.XXX ± .005	

HOLES
A - 11/64 DIA. (4 REQ.)



MS 5088

SYM	DESCRIPTION	DATE	E.M.N. NO.	DRAFT	CHKD	APPD
X	EXP. RELEASE	9-10-66	X	MS	MS	MS
X1	5-7/8 WAS 2-7/8, 4-1/8 WAS 1-1/8	9-20-66	X1	MS	MS	MS
X2	Q'TY WAS 1	9-27-66	X2	MS	MS	MS
X3	4-1/8, 1-1/4, 1-7/8 WERE 3-1/2, 15, 15-5/8	10-12-66	X3	MS	MS	MS
Ø	ORIGINAL RELEASE FOR PRODUCTION	2/23/67	Ø	CV	MS	MS

REVISIONS

Q'TY./UNIT	2	MODEL USED ON	SWCB-3K	ASSY. NO.	
SCALE	1:1	CODE	A		

THE CONTENTS OF THIS DRAWING ARE THE EXCLUSIVE PROPERTY OF THE TECHNICAL MATERIEL CORP. ITS UNAUTHORIZED USE OR REPRODUCTION IN WHOLE OR IN PART IS STRICTLY FORBIDDEN.

REQ'D.	ITEM	PART NUMBER	DESCRIPTION	SYMBOL
	F. BUDETTI			
	MATERIAL	.051 THICK ALUMINUM		
		5052-H32		
	FINISH	S404 YEL IRIDITE		

UNLESS OTHERWISE SPECIFIED DIMENSIONS ARE IN INCHES AND INCLUDE CHEMICALLY APPLIED OR PLATED FINISHES

DECIMALS: .X ± .05, .XX ± .01, .XXX ± .005
FRACTIONS: ± 1/64 ANGLES: ± 0° 30'

DRAWN	DATE	FINAL APPROVAL	DATE
CHECKED	DATE		
ELECT. DES.	DATE		
MECH. DES.	DATE		

THE TECHNICAL MATERIEL CORP.
MAMARONECK, NEW YORK

COVER, TOP & BOTTOM

MS 5088

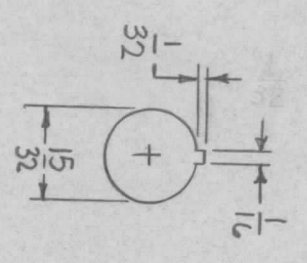
SHEET

REV. LTR.

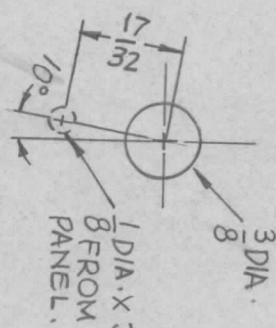
LIST OF MATERIAL

NOTES

HOLES	DESCRIPTION	REQ
A	13/64 DIA.	4
B	15/64 DIA.	4
C	15/32 DIA.	1
D	1/4 X 29/64 SLOTS	4
E	SEE DETAIL	2
F	SEE DETAIL	1
G	1/2 DIA.	1

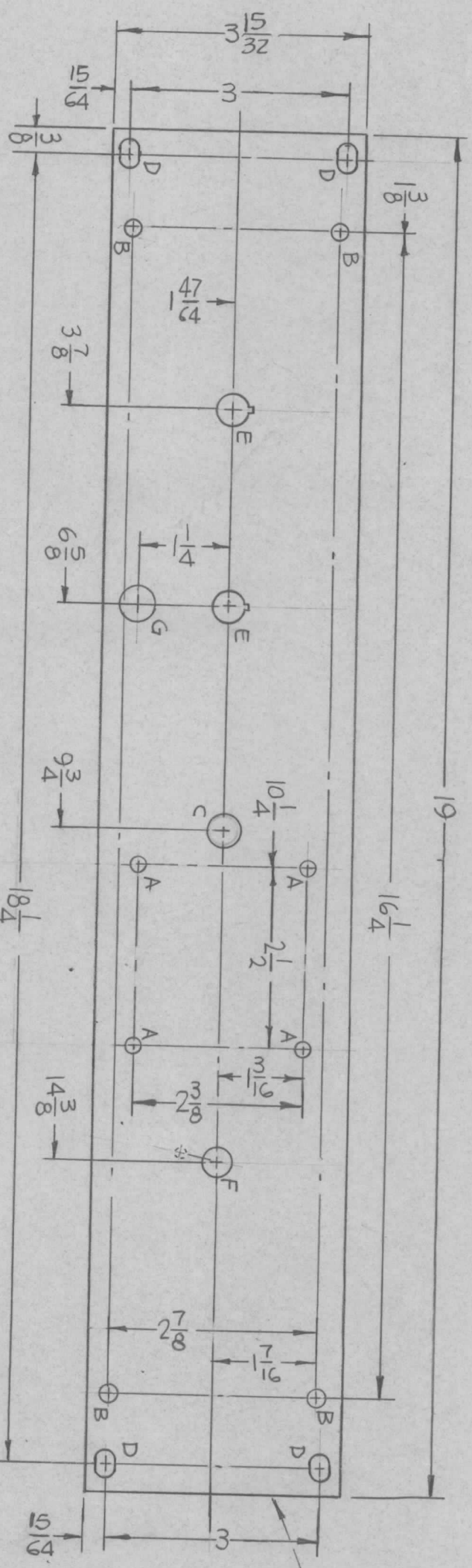


DETAIL-E



DETAIL-F

REVOLUTIONS		SYM	DESCRIPTION	DATE	E.M.N. NO.	DRAFT	CHKD	APPD
X	EXP. RELEASE			9-16-66				
X1	G HOLE ADDED			10-17-66				
X2	10° ADDED TO F DETAIL			1-21-67				
Ø	ORIGINAL RELEASE FOR PRODUCTION			9/23/67		CV		



FRONT VIEW

MARK TMC P/N (MS5092-)
1/8 HIGH GOTHIC W/LATEST.
REV. LETTER.
(ON REAR)

MACHINING:

1. MILL ALL EDGES.
2. HOLES MUST BE DRILLED, UNLESS OTHERWISE SPECIFIED.
3. LATERAL BOW OF PANEL MUST BE KEPT TO .031 TOLERANCE.
4. PANEL MUST BE FREE OF ALL MACHINING MARKS, GOUGES AND SCRATCHES. IF NECESSARY, SAND FRONT OF PANEL WITH NO. 120 GRIT SANDPAPER.

FINISH NOTES:

1. S404 - IRIDITE 14-2 AL-COAT
 2. S114 - ZINC CHROMATE PRIMER
 3. S115 - SMOOTH GRAY ENAMEL
- PRIME AND PAINT PER CUSTOMER'S SPECIFICATIONS
OR
FRONT AND EDGES ONLY

NOTES

QTY./UNIT	SCALE	MODEL USED ON	ASSY. NO.
1	1:2	AX-G31	

THE CONTENTS OF THIS DRAWING ARE THE EXCLUSIVE PROPERTY OF THE TECHNICAL MATERIEL CORP. ITS UNAUTHORIZED USE OR REPRODUCTION IN WHOLE OR IN PART IS STRICTLY FORBIDDEN.

REF: LD2170	RECD. ITEM	PART NUMBER	DESCRIPTION
	F. BUDETTI		THE TECHNICAL MATERIEL CORP. MAMARONECK, NEW YORK

MATERIAL	FINISH	TITLE
3/16 THICK ALUMINUM 2024-T3	SEE NOTES	PANEL, FRONT

UNLESS OTHERWISE SPECIFIED DIMENSIONS ARE IN INCHES AND INCLUDE CHEMICALLY APPLIED OR PLATED FINISHES	DRAWN	DATE	FINAL APPROVAL	DATE
DECIMALS .XX ± .01	MECH. DES.	DATE		
FRACTIONS ± 1/64 ANGLES ± 0° 30'				

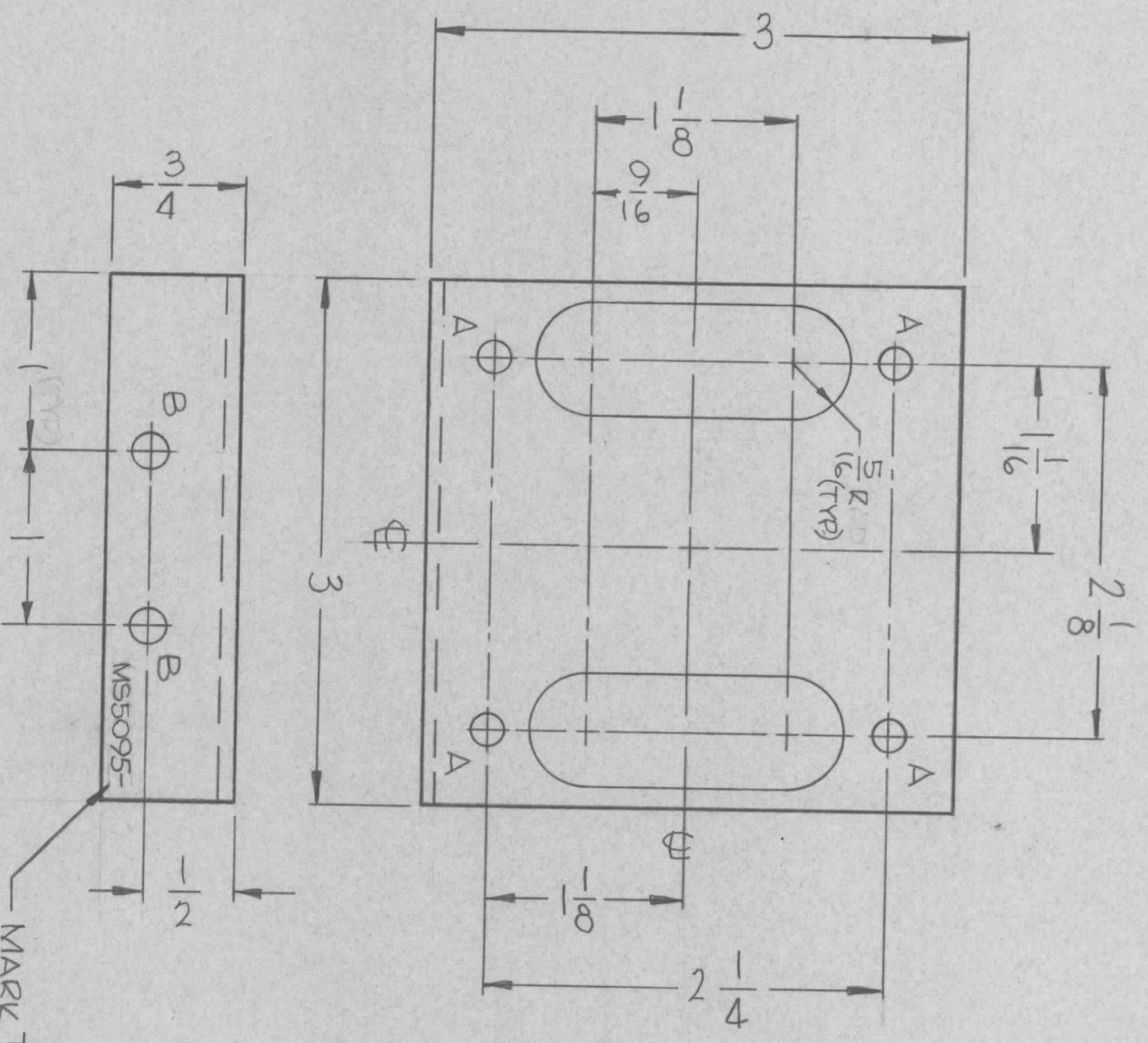
MS5092	SHEET	REV. LTR

REVISIONS						
ZONE	LTR	DESCRIPTION	DATE	E.M.N. NO	DRAFT	CHKD APPD
	A	REDRAWN W/REVISIONS	1/9/67	17699	WHD	<i>[Signature]</i>

HOLE	DESCRIPTION	REQ
A	11/64 DIA	4
B	3/16 DIA	2

UNLESS OTHERWISE SPECIFIED:

1. USE MATERIAL THICKNESS FOR MAXIMUM RADIUS ON ALL BENDS
2. ALL ANGULAR BENDS 90 DEGREES
3. REMOVE ALL BURRS AND SHARP EDGES



MARK TMC PART/NO.
 & HIGH W/LATEST
 REVISION LETTER

REQ'D ITEM	PART NUMBER	DESCRIPTION	SYM.

LIST OF MATERIAL

THE TECHNICAL MATERIEL CORP.
 MAMARONECK, NEW YORK

BRACKET MTG TRANSFORMER

QTY / UNIT	1	MODEL USED ON	SMEA-1	ASS'Y NO.	
APPLICATION		CODE			

UNLESS OTHERWISE SPECIFIED DIMENSIONS ARE IN INCHES AND INCLUDE CHEMICALLY APPLIED OR PLATED FINISHES		FINAL APPROVAL	DATE
MECH. DES.		<i>[Signature]</i>	
ELECT. DES.			
CHECKED	J. DE	DATE	
DRAWN	RME	DATE	9/21/66

SIZE	B	CODE IDENT. NO.	82679	DWG NO.	M55095	ISSUE	A
SCALE	(:)					SHEET	OF

NOTICE TO PERSONS RECEIVING THIS DRAWING

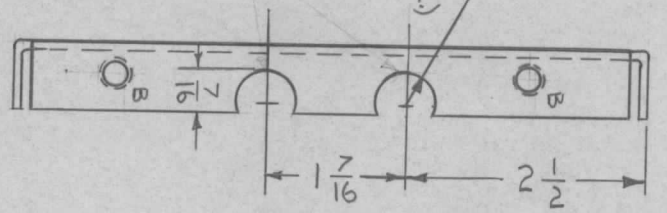
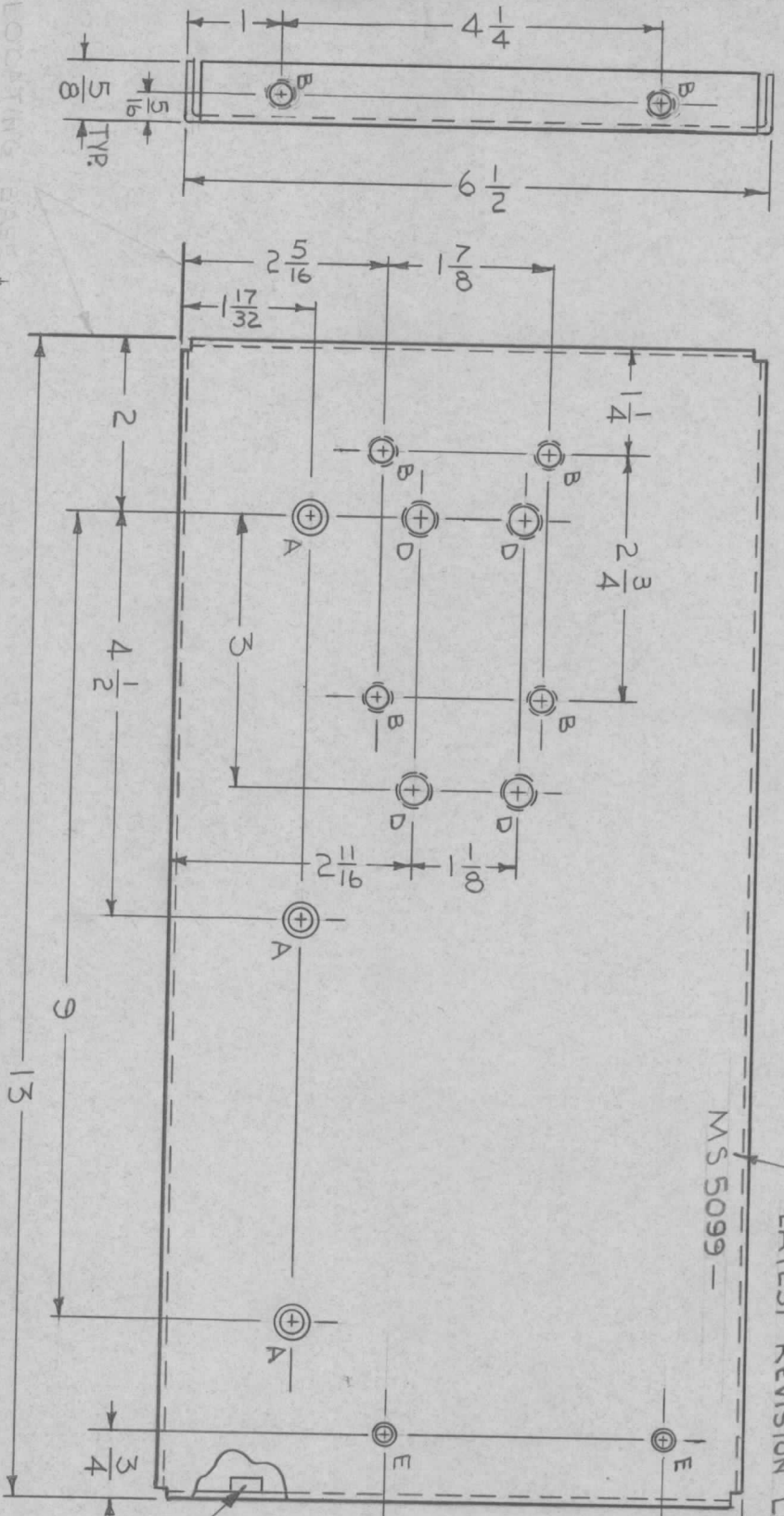
THE TECHNICAL MATERIEL CORPORATION claims proprietary right in the material disclosed hereon. This drawing is issued in confidence for engineering information only and may not be reproduced or used to manufacture anything shown hereon without permission from THE TECHNICAL MATERIEL CORPORATION to the user. This drawing is loaned for mutual assistance and is subject to recall at any time.

TMC PART NO.	DESCRIPTION
MS 5099 - 1	A5 SHOWN, RIGHT SIDE (W/ CUTOUTS & "E" HOLES)
MS 5099 - 2	OPPOSITE HAND, LEFT SIDE (W/OUT CUTOUTS & "E" HOLES)

REVISIONS		DATE	E.M.N. NO.	DRAFT	CHKD	APPD
X	EXPERIMENTAL RELEASE	9/22/66	X	RME		
Ø	ORIGINAL RELEASE FOR PRODUCTION	9/26/66	Ø			

MS 5099

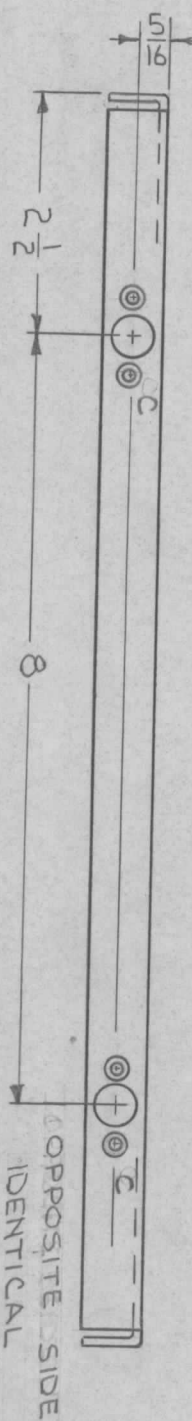
METAL STAMP
TMC P/NO 1/8
HIGH GOTHIC WITH
LATEST REVISION LETTER



HOLE	DESCRIPTION	REQ
A	.169 DIA. & C'SINK 82° TO .337 DIA.	3
B	.221 - .224 DIA.	8
C	SEE DETAIL	4
D	.250 - .253 DIA.	4
E	.120 DIA. C'SINK 82° TO .230 DIA	2

NOTE:
CUTOUTS & "E" HOLES
ON RIGHT SIDE PLATE
ONLY.

1 MOUNT IN ALL "B" HOLES



REQ'D.	ITEM	PART NUMBER	DESCRIPTION	SYMBOL
4	2	NT 129-1032-4	NUT, ROUND, SWAGE TYPE	D
8	1	NT 129-832-4	NUT, ROUND, SWAGE TYPE	B

LIST OF MATERIAL
THE TECHNICAL MATERIEL CORP.
MAMARONECK, NEW YORK

TITLE	PLATE, SIDE RIGHT & LEFT
DRAWN	RME
CHECKED	HQ
ELECT. DES.	
MECH. DES.	

DATE	9/22/66	DATE	9/26/66
DATE	9/26/66	DATE	9/26/66
DATE		DATE	
DATE		DATE	

- UNLESS OTHERWISE SPECIFIED:
1. USE MATERIAL THICKNESS FOR MAXIMUM RADIUS ON ALL BENDS.
 2. ALL ANGULAR BENDS 90 DEGREES
 3. REMOVE ALL BURRS AND SHARP EDGES
 4. MOUNT INSERTS AFTER FINISHING

NOTES

QTY./UNIT	1	MODEL USED ON	SMEA-1	ASSY. NO.	
SCALE	1:2	CODE	A		

THE CONTENTS OF THIS DRAWING ARE THE EXCLUSIVE PROPERTY OF THE TECHNICAL MATERIEL CORP. ITS UNAUTHORIZED USE OR REPRODUCTION IN WHOLE OR IN PART IS STRICTLY FORBIDDEN.