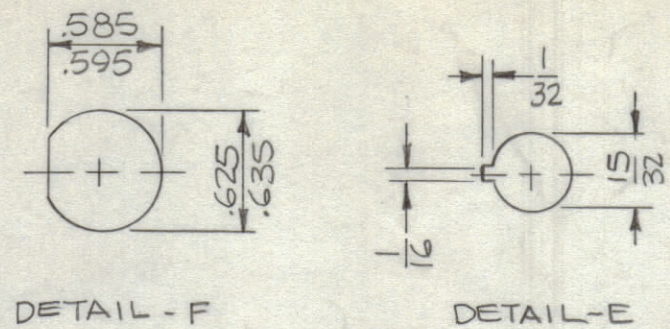
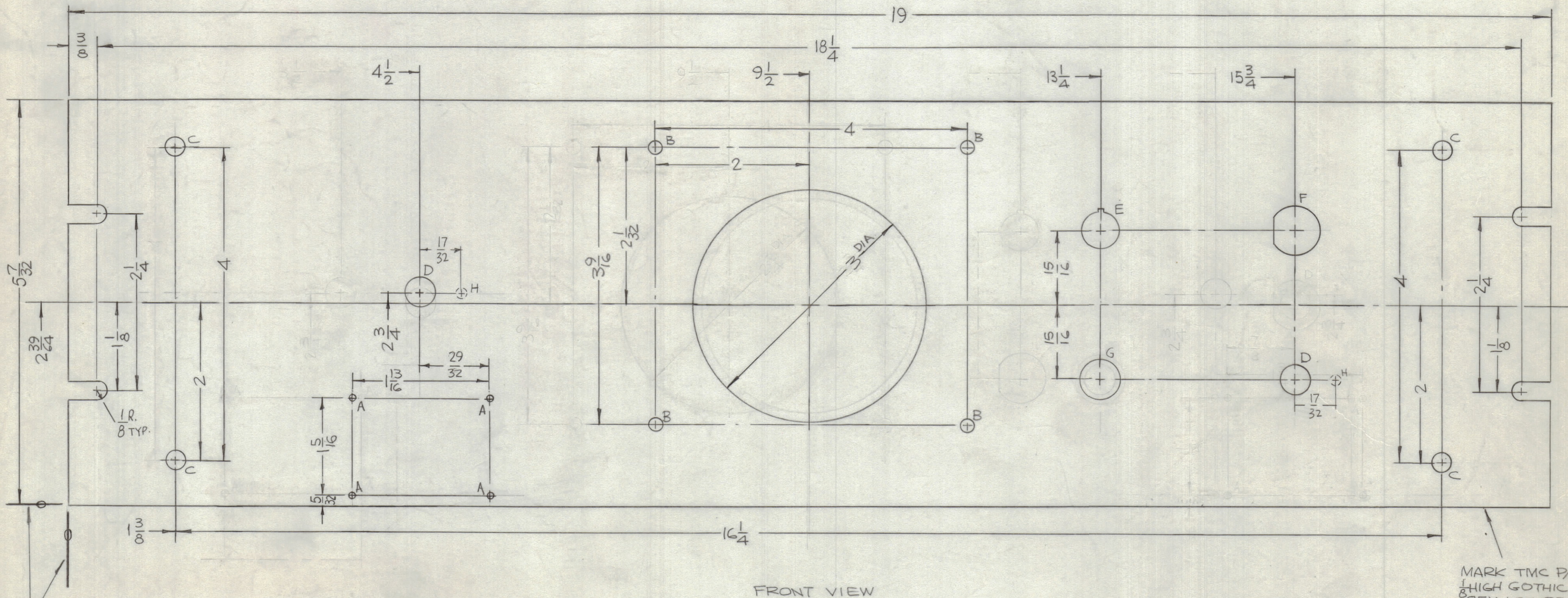


HOLES	DESCRIPTION	REQ.
A	.076 DIA.	4
B	11/64 DIA.	4
C	15/64 DIA.	4
D	3/8 DIA.	2
E	SEE DETAIL	1
F	SEE DETAIL	1
G	1/2 DIA.	1
H	1/8 DIA. X 1/8 DEEP FROM REAR	2



REVISIONS						
ZONE	SYM	DESCRIPTION	DATE	E.M.N. NO.	DRAFT	CHKD APPD
	X	EXP. RELEASE	9-10-66	X		gcb aa
	X1	A, D, F HOLES RELOCATED, I, D ADDED	9-20-66	X1		ga
	X2	G HOLE WAS D HOLE, H HOLES ADDED	9-29-66	X2		aa
	X3	NAME PLATE DIM. WERE 1-3/4 X 1-1/4	11-23-66	X3		aa
	Ø	ORIGINAL RELEASE FOR PRODUCTION	2/23/67	Ø	CV	



LOCATING BASE LINES

MACHINING:

- MILL ALL EDGES.
- HOLES MUST BE DRILLED, UNLESS OTHERWISE SPECIFIED.
- LATERAL BOW OF PANEL MUST BE KEPT TO .031 TOLERANCE.
- PANEL MUST BE FREE OF ALL MACHINING MARKS, GOUGES AND SCRATCHES. IF NECESSARY, SAND FRONT OF PANEL WITH NO. 120 GRIT SANDPAPER.

FINISH NOTES:

- S404 - IRIDITE 14-2 AL-COAT.
- S114 - ZINC CHROMATE PRIMER) FRONT AND
- S115 - SMOOTH GRAY ENAMEL) EDGES ONLY

OR
PRIME & PAINT PER CUSTOMER'S SPECS.

NOTES

QTY./UNIT	MODEL USED ON	ASS'Y. NO.
SCALE 1:1	CODE A	
THE CONTENTS OF THIS DRAWING ARE THE EXCLUSIVE PROPERTY OF THE TECHNICAL MATERIEL CORP. ITS UNAUTHORIZED USE OR REPRODUCTION IN WHOLE OR IN PART IS STRICTLY FORBIDDEN.		

REF: LD2168

REQ'D.	ITEM	PART NUMBER	DESCRIPTION	SYMBOL
F. BUDETTI LIST OF MATERIAL				
MATERIAL		THE TECHNICAL MATERIEL CORP.		
3/16 THICK ALUM.		MAMARONECK, NEW YORK		
2024-T3		TITLE		
FINISH		PANEL, FRONT		
SEE NOTES		DRAWN		
		DATE 9-10-66		
		CHECKED		
		DATE		
		ELECT. DES.		
		DATE		
		MECH. DES.		
		DATE		
		SHEET		
		REV. LTR.		

MS5090