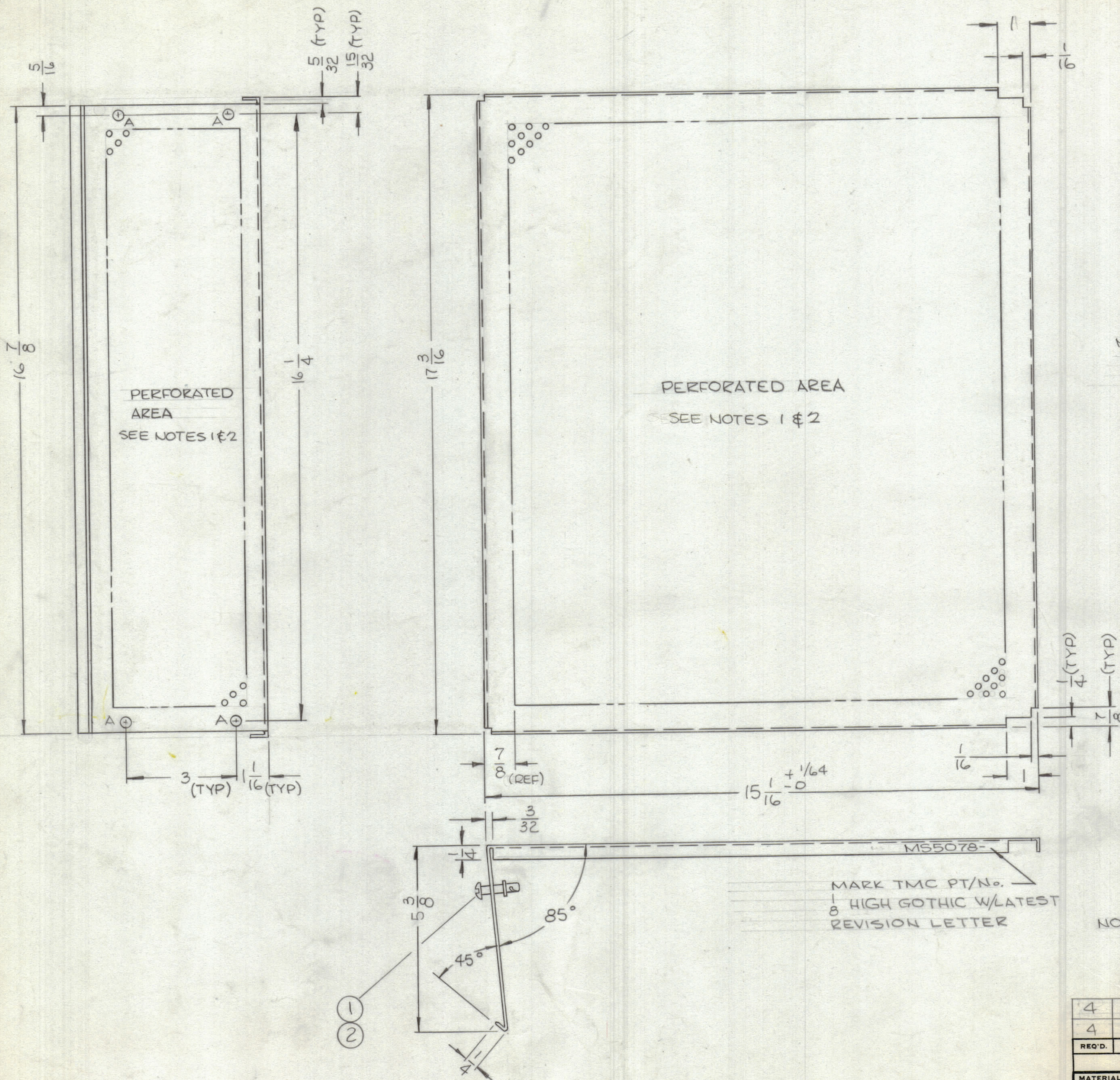


REVISIONS							
ZONE	SYM	DESCRIPTION	DATE	E.M.N. NO.	DRAFT	CHKD	APPD
	Ø	ORIGINAL RELEASE FOR PRODUCTION	12/15/66	Ø	RME		



A HOLE 1/4 DIA 4 REQ

NOTES: 1-PERFORATION BORDERS APPROX 7/8
2-PERFORATION .072 HOLES ON 1/8 STAGGERED CENTERS

PERFORATED AREA
SEE NOTES 1 & 2

PERFORATED AREA
SEE NOTES 1 & 2

MARK TMC PT/No.
1/8 HIGH GOTHIC W/LATEST
REVISION LETTER

NOTE: HARDWARE TO BE SUPPLIED AND
ASSEMBLED BY TMC

REQ'D.	ITEM	PART NUMBER	DESCRIPTION	SYMBOL
4	2	FS109-3	RING, RETAINING	
4	1	FS110-1	STUD, TURNLOCK	

LIST OF MATERIAL				
MATERIAL	THE TECHNICAL MATERIEL CORP.			
051 ALUMINUM 5052-H32	MAMARONECK, NEW YORK			
FINISH	TITLE			
S404 YELLOW IRIDITE	COVER, TOP			
UNLESS OTHERWISE SPECIFIED DIMENSIONS ARE IN INCHES AND INCLUDE CHEMICALLY APPLIED OR PLATED FINISHES			DRAWN	DATE
			who	3.6.66
			CHECKED	DATE
			gfb	
			ELECT. DES.	DATE
			MECH. DES.	DATE
			SHEET	REV. LTR.
				Ø

UNLESS OTHERWISE SPECIFIED:
1. USE MATERIAL THICKNESS FOR MAXIMUM
RADIUS ON ALL BENDS
2. ALL ANGULAR BENDS 90 DEGREES
3. REMOVE ALL BURRS AND SHARP EDGES

Q'TY./UNIT	MODEL USED ON	ASS'Y. NO.
1	PSP350C	
SCALE	CODE	
THE CONTENTS OF THIS DRAWING ARE THE EXCLUSIVE PROPERTY OF THE TECHNICAL MATERIEL CORP. ITS UNAUTHORIZED USE OR REPRODUCTION IN WHOLE OR IN PART IS STRICTLY FORBIDDEN.		

NOTES

MS5078
Ø