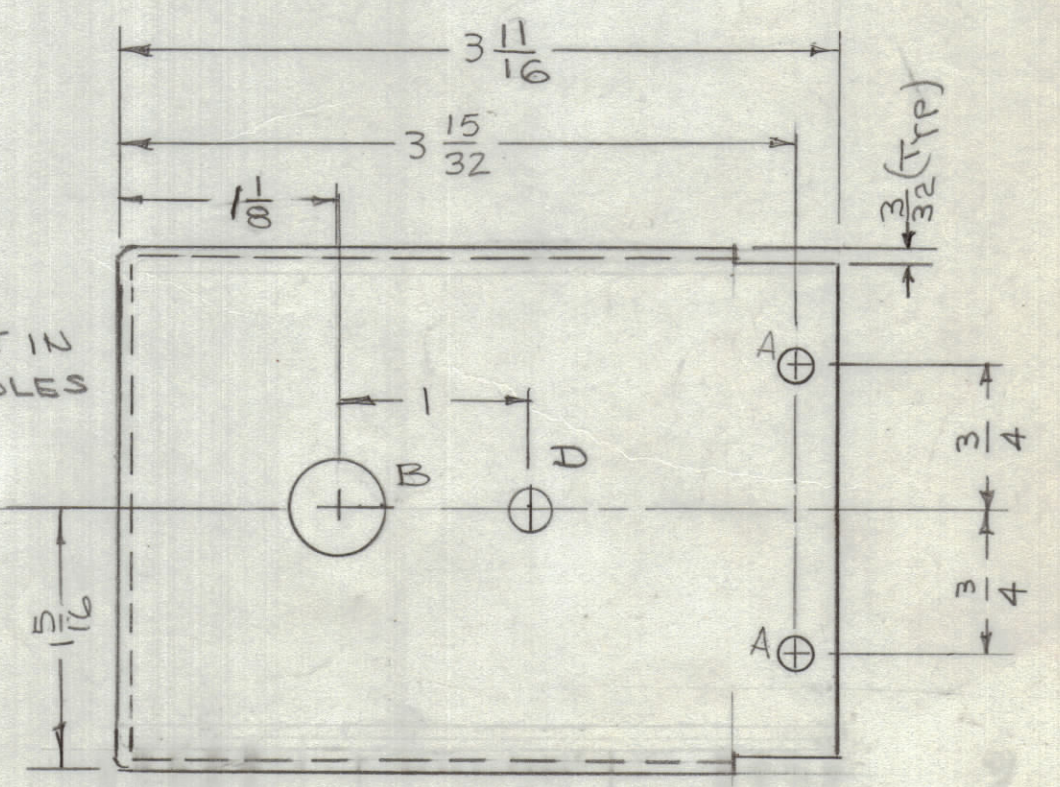
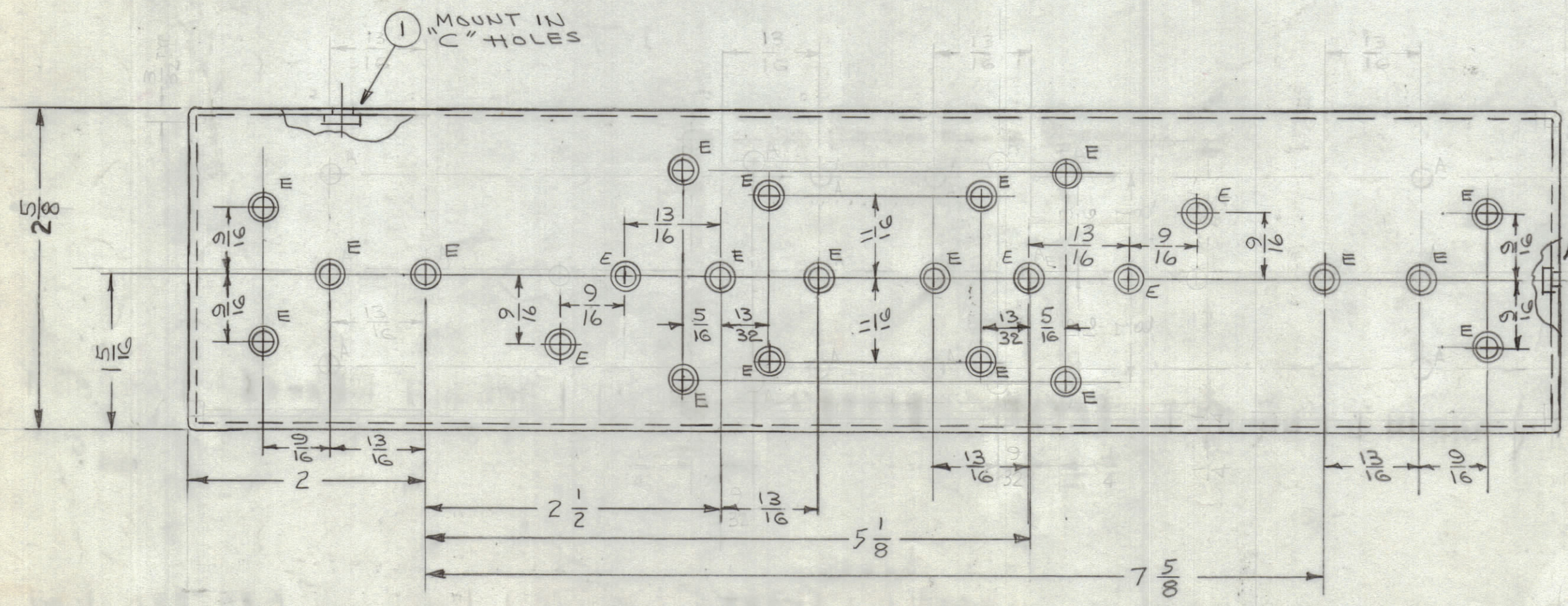
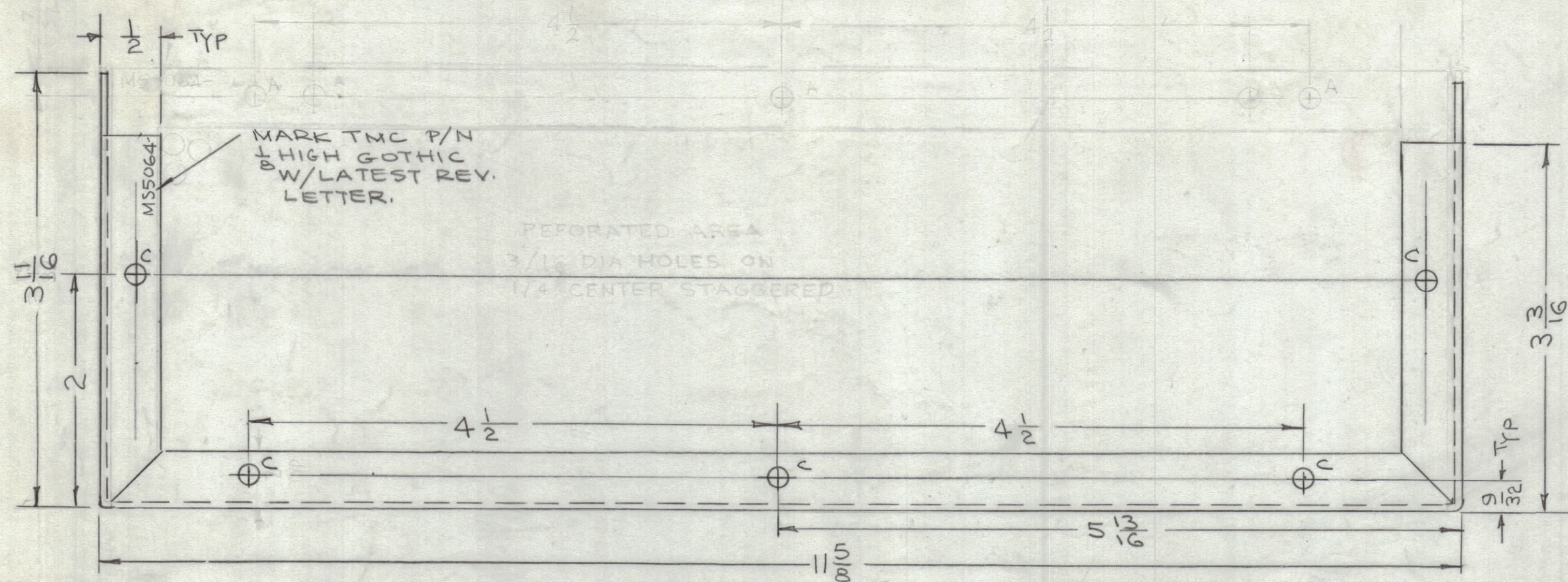


REVISIONS							
ZONE	SYM	DESCRIPTION	DATE	E.M.N. NO.	DRAFT	CHKD	APPD
	X	EXP RELEASE	8-30-66	X	JBC		
	X1	1A HOLE ADDED	9-26-66	X1	<i>[Signature]</i>	W	W
	X2	1A HOLES RELOCATED	10-6-66	X2	<i>[Signature]</i>	W	W
	X3	COMPLETELY REVISED	9/12/67	X3	<i>[Signature]</i>	W	W
3C	X4	1-5/16 WAS 1-3/8	9-13-67	X4	<i>[Signature]</i>	W	W
	X5	4"E" HOLES ADDED	3/22/68	X5	<i>[Signature]</i>	W	W
	Ø	ORIGINAL RELEASE FOR PRODUCTION	7/24/69	Ø	Ø		

SYM	DESCRIPTION	REQ
A	1/64 DIA	4
B	1/2 DIA	2
C	.161-.164 DIA	10
D	.221-.224 DIA	2
E	DR.144 DIA. C'SINK 82° TO .284 D.	24



UNLESS OTHERWISE SPECIFIED:

1. USE MATERIAL THICKNESS FOR MAXIMUM RADIUS ON ALL BENDS
2. ALL ANGULAR BENDS 90 DEGREES
3. REMOVE ALL BURRS AND SHARP EDGES
4. MOUNT INSERTS AFTER FINISHING

QTY./UNIT	ITEM	PART NUMBER	DESCRIPTION	SYMBOL
2	2	NT129-832-4	NUT, PLAIN, SPLINE	D
10	1	NT129-440-4	NUT, PLAIN, SPLINE	C

F. BUDETTI LIST OF MATERIAL

MATERIAL: .064THK ALUMINUM 5052-H32

FINISH: S404 YEL. IRIDITE

TITLE: BOX, FILTER

THE TECHNICAL MATERIEL CORP. MAMARONECK, NEW YORK

DRAWN: JBC DATE: 8-30-66

CHECKED: *[Signature]* DATE: 9/26/66

ELECT. DES. DATE: 9/26/66

MECH. DES. DATE: 5-22-67

FINAL APPROVAL: *[Signature]* DATE: 5/22/69

SHEET: MS5064

REV. LTR. Ø

REF: LD 1504

TFP-2.5K

QTY./UNIT: 1

SCALE: 1:1

MODEL USED ON: CODE A

ASS'Y. NO.: S401-451, S401-, S401-

THE CONTENTS OF THIS DRAWING ARE THE EXCLUSIVE PROPERTY OF THE TECHNICAL MATERIEL CORP. ITS UNAUTHORIZED USE OR REPRODUCTION IN WHOLE OR IN PART IS STRICTLY FORBIDDEN.

NOTES