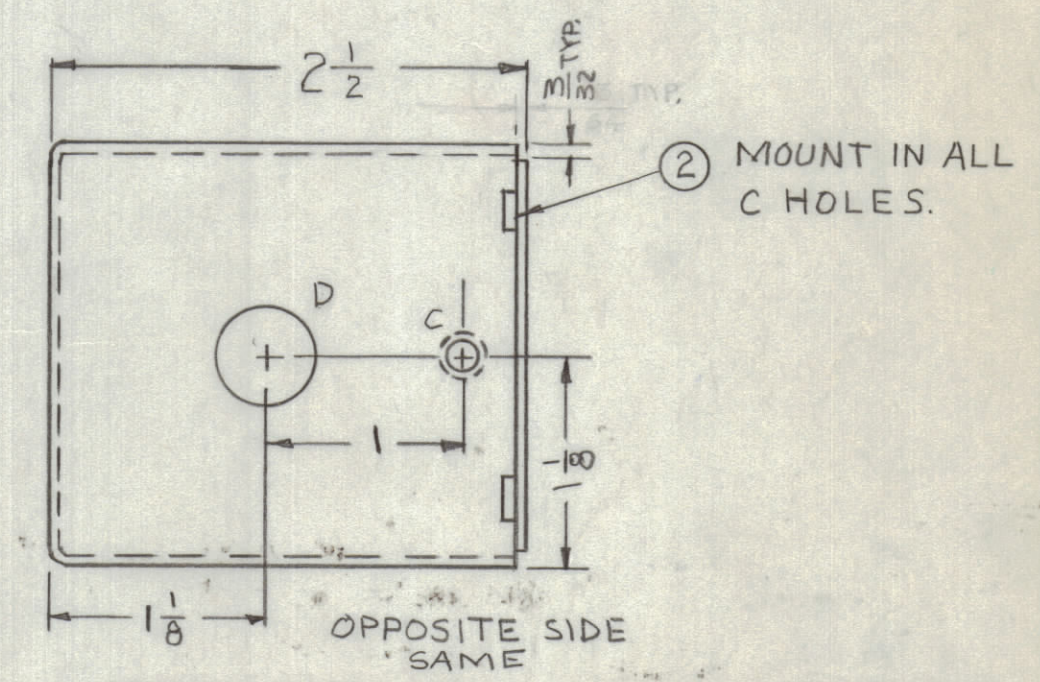
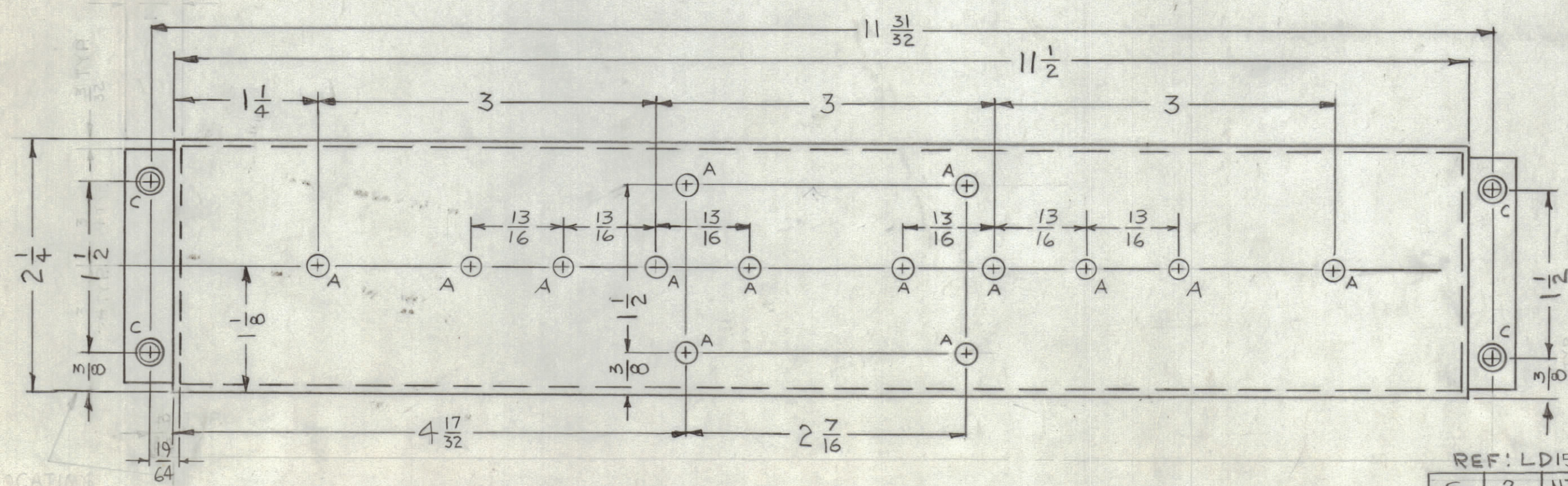
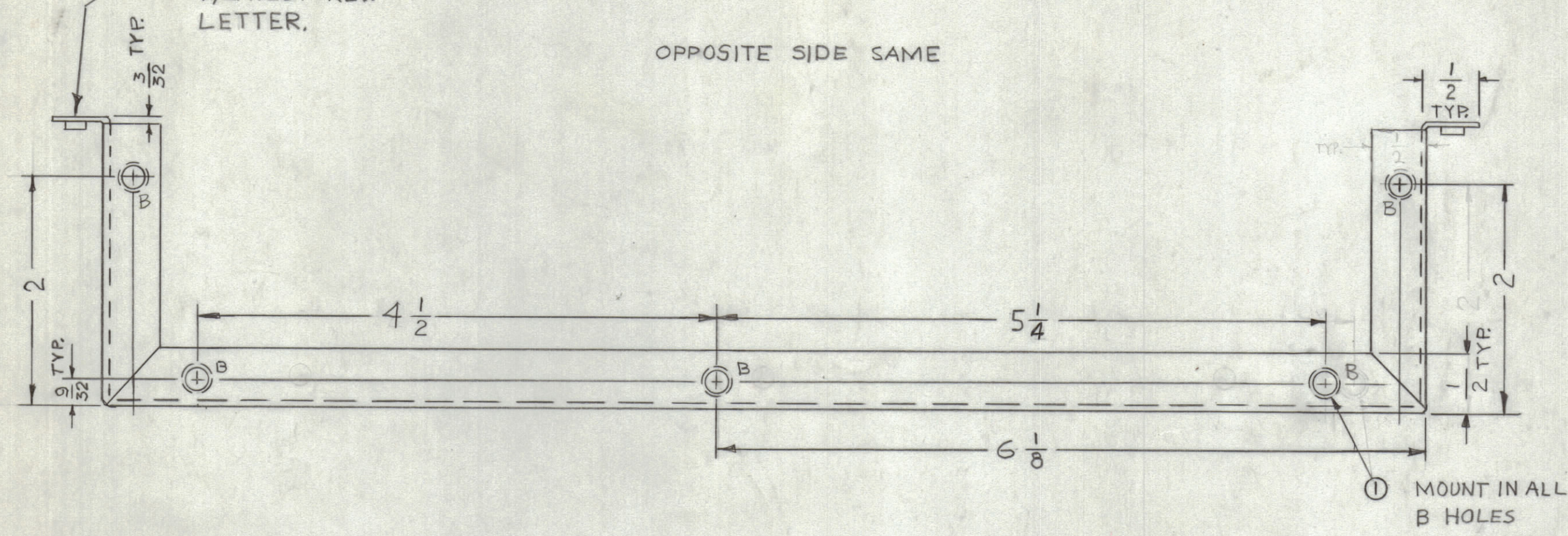


REVISIONS						
ZONE	LTR	DESCRIPTION	DATE	E.M.N.NO	DRAFT	CHKD APPD
	X2	REV. & REDRAWN FROM 2 SIZE	9-12-67		H.G.	
	X3	1 9/64 WAS 9/32	9-13-67	X3		
	X4	2 ITEM 1 ADDED, 5 1/4 DIM WA 5 1/2	9-20-67		ENJ	
	X5	4 "A" HOLES ADDED	3/22/68	X5		
	Ø	ORIGINAL RELEASE FOR PRODUCTION	5/22/69		(W)	

MARK TMC P/N (MS5062-)  
1/8 HIGH GOTHIC  
W/LATEST REV.  
LETTER.

OPPOSITE SIDE SAME

HOLES:  
A-.1164 DIA (12 REQ)  
B-.161-.164 DIA (8 REQ)  
C-.221-.224 DIA (6 REQ)  
D-1/2 DIA (2 REQ)



REF: LD150L

QTY. REQ.	ITEM	PART NO.	DESCRIPTION	SYMBOL
6	2	NT 129-832-4	NUT, PLAIN, SPLINE	C
10	1	NT 129-440-4	NUT, PLAIN, SPLINE	B

F. BUDETTI

FINAL APPROVAL: *[Signature]* DATE: 5/22/69

MECH. DES. DATE:

ELECT. DES. DATE: 5/22/69

CHECKED: *[Signature]* DATE: 9/12/67

DRAWN: H.G. DATE: 9-12-67

LIST OF MATERIAL

THE TECHNICAL MATERIEL CORP.  
MAMARONECK, NEW YORK

BOX, FILTER

UNLESS OTHERWISE SPECIFIED  
DIMENSIONS ARE IN INCHES  
AND INCLUDE CHEMICALLY APPLIED  
OR PLATED FINISHES

TOLERANCES ON

DECIMALS	FRACTIONS
.X ± .05	± 1/64
.XX ± .01	ANGLES
.XXX ± .005	± 0° -30'

MATERIAL .064 THICK ALUM.  
5052-H32

FINISH  
S404 YEL IRIDITE

QTY / UNIT	MODEL USED ON	ASS'Y NO.
	TFP-2.5K	
APPLICATION		
	CODE S401-451	
	A	

NOTICE TO PERSONS RECEIVING THIS DRAWING

THE TECHNICAL MATERIEL CORPORATION claims proprietary right in the material disclosed hereon. This drawing is issued in confidence for engineering information only and may not be reproduced or used to manufacture anything shown hereon without permission from THE TECHNICAL MATERIEL CORPORATION to the user. This drawing is loaned for mutual assistance and is subject to recall at any time.

- UNLESS OTHERWISE SPECIFIED:
1. USE MATERIAL THICKNESS FOR MAXIMUM RADIUS ON ALL BENDS
  2. ALL ANGULAR BENDS 90 DEGREES
  3. REMOVE ALL BURRS AND SHARP EDGES
  4. MOUNT INSERTS AFTER FINISHING

MS 5062