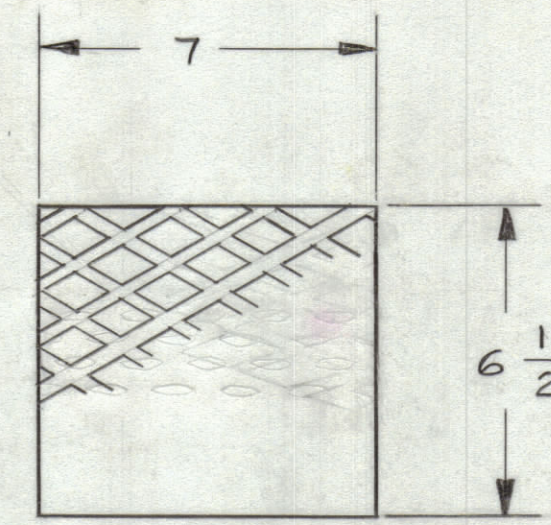
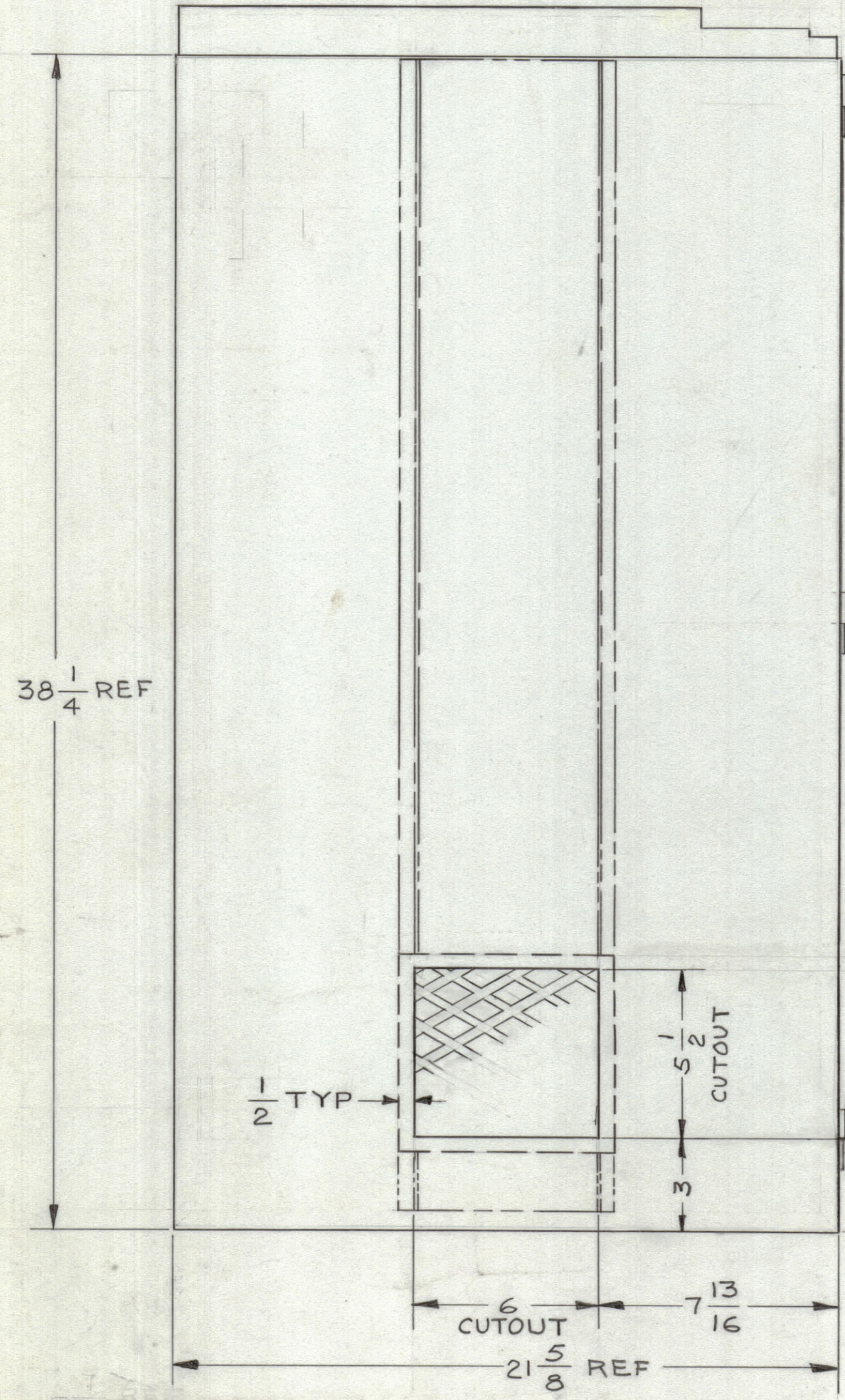
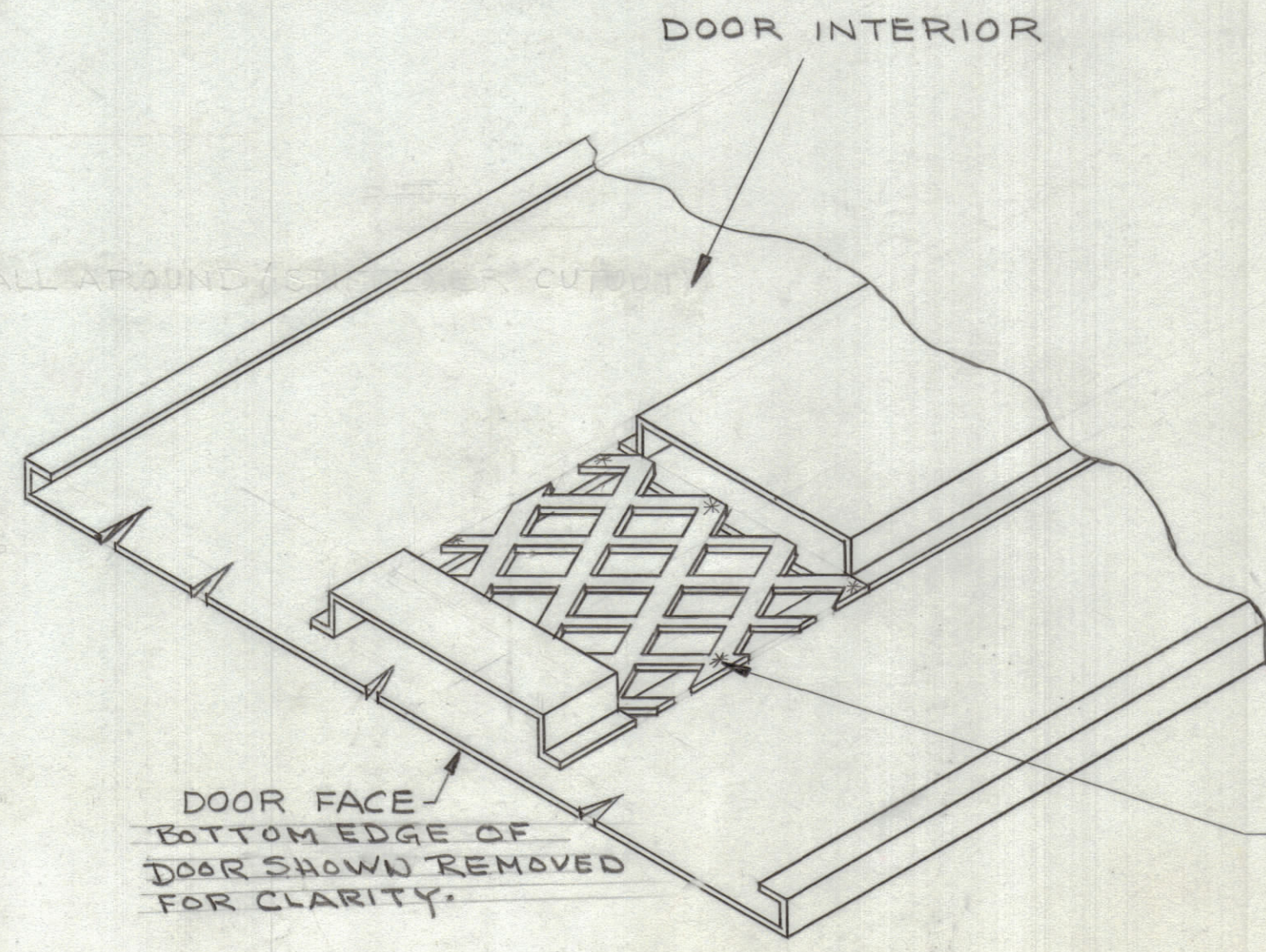


REVISIONS							
ZONE	SYM	DESCRIPTION	DATE	E.M.N. NO.	DRAFT	CHKD	APPD
	Q	ORIGINAL RELEASE FOR PRODUCTION	9-1-66	Q	RME		



**MATERIAL:**  
 062 FLATTENED  
 EXPANDED CARBON  
 STEEL  
 (NOTE: TO BE SPOT WELDED  
 ON INTERIOR OF DOOR  
 AS SHOWN)



\* TYP 12 PLACES  
 (SPOT WELD MARKS  
 MUST NOT SHOW ON  
 FACE OF DOOR)

DOOR FACE SHOWN

- D) S870 PAINT, BLACK, FLAT
- C) S523 PAINT, BLUE-GRAY SMOOTH INSIDE CABINET
- B) S520 PAINT, BLUE-GRAY TEXTURED, FRONT & EDGES ONLY
- A) DEGREASE & CLEAN

1) FINISH:  
 NOTE MS3885 FOR MODIFICATION

**NOTES**

1	KIT300	
QTY./UNIT	MODEL USED ON	ASS'Y. NO.
SCALE	CODE	

THE CONTENTS OF THIS DRAWING ARE THE EXCLUSIVE PROPERTY OF THE TECHNICAL MATERIEL CORP. ITS UNAUTHORIZED USE OR REPRODUCTION IN WHOLE OR IN PART IS STRICTLY FORBIDDEN.

REQ'D.	ITEM	PART NUMBER	DESCRIPTION	SYMBOL
<b>LIST OF MATERIAL</b>				
R.HAY		THE TECHNICAL MATERIEL CORP. MAMARONECK, NEW YORK		
MATERIAL USE TMC PART NO MS3885-Q FOR MODIFICATION		TITLE LOWER FRONT DOOR ASSY MODIFIED AS SHOWN		
SEE NOTE 1		DRAWN C.E.D. DATE 8-23-66		
UNLESS OTHERWISE SPECIFIED DIMENSIONS ARE IN INCHES AND INCLUDE CHEMICALLY APPLIED OR PLATED FINISHES		CHECKED HDe DATE 8-29-66		
DECIMALS .X ± .05 .XX ± .01 .XXX ± .005		FRACTIONS ± 1/64 ANGLES ± 0° 30'		ELECT. DES. DATE
TOLERANCES		MECH. DES. DATE 8/31/66		SHEET
MS5060				Q

MS 5060 Q