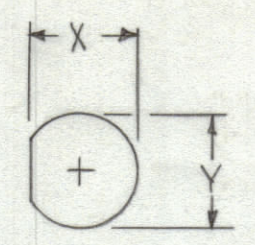


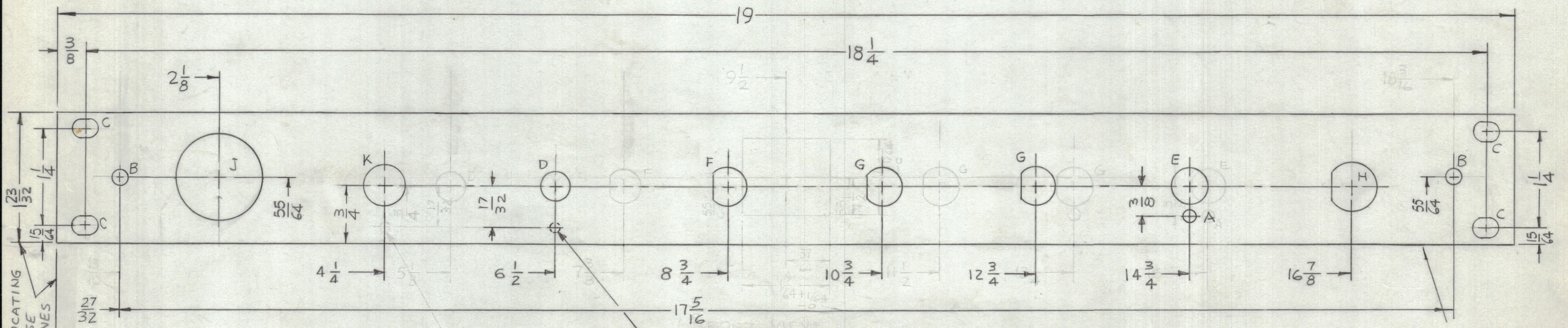
REVISIONS							
ZONE	SYM	DESCRIPTION	DATE	E.M.N. NO.	DRAFT	CHKD	APPD
	X	EXP. RELEASE	8-26-66	X	JBC		
	X1	COMPLETELY REVISED	9-9-66	X1	JBC		
	X2	F HOLE WAS X-402, Y-434	7-28-66	X2	JBC		
	Ø	ORIGINAL RELEASE FOR PRODUCTION	12/30/66	Ø	RME		

HOLE	DESCRIPTION	REQ
A	5/32 DIA	1
B	13/64 DIA.	2
C	1/4 X 29/64 SLOT	4
D	3/8 DIA.	1
E	15/32 DIA.	1
F	SEE DETAIL	1
G	SEE DETAIL	2
H	SEE DETAIL	1
J	1-5/32 DIA.	1
K	1/2 DIA	1

DETAIL	X	Y
F	.355	.390
G	.468	1/2
H	.590-.595	5/8



DETAILS F, G, H



1/8 x 3/32 DEEP C'BORE FROM REAR

MARK TMC P/N (MS5056) 1/8 HIGH GOTHIC W/LATEST REV. LETTER (ON REAR)

MACHINING:

- MILL ALL EDGES.
- HOLES MUST BE DRILLED, UNLESS OTHERWISE SPECIFIED.
- LATERAL BOW OF PANEL MUST BE KEPT TO .031 TOLERANCE.
- PANEL MUST BE FREE OF ALL MACHINING MARKS, GOUGES AND SCRATCHES. IF NECESSARY, SAND FRONT OF PANEL WITH NO. 120 GRIT SANDPAPER.

FINISH NOTES:

- S404 - IRIDITE 14-2 AL-COAT.
- S114 - ZINC CHROMATE PRIMER } FRONT AND EDGES ONLY
- S115 - SMOOTH GRAY ENAMEL } OR PRIME AND PAINT PER CUSTOMER'S SPECIFICATIONS.

REF. LD2154-

REQ'D.	ITEM	PART NUMBER	DESCRIPTION	SYMBOL
F. BUDETTI LIST OF MATERIAL				
MATERIAL			THE TECHNICAL MATERIEL CORP.	
3/16 THICK ALUMINUM			MAMARONECK, NEW YORK	
2024-T3			TITLE	
FINISH			PANEL, FRONT	
SEE NOTES			DRAWN	
UNLESS OTHERWISE SPECIFIED			DATE	
DIMENSIONS ARE IN INCHES AND INCLUDE			8-26-66	
CHEMICALLY APPLIED OR PLATED FINISHES			CHECKED	
DECIMALS			DATE	
X ± .05			12/30/66	
.XX ± .01			ELECT. DES.	
.XXX ± .005			DATE	
TOLERANCES			MS5056	
FRACTIONS			MECH. DES.	
± 1/64			DATE	
ANGLES			SHEET	
± 0° 30'			REV. LTR.	

Q'TY./UNIT	MODEL USED ON	ASS'Y. NO.
1	AX-633	A5549
SCALE	CODE	
1:1	A	

NOTES

THE CONTENTS OF THIS DRAWING ARE THE EXCLUSIVE PROPERTY OF THE TECHNICAL MATERIEL CORP. ITS UNAUTHORIZED USE OR REPRODUCTION IN WHOLE OR IN PART IS STRICTLY FORBIDDEN.