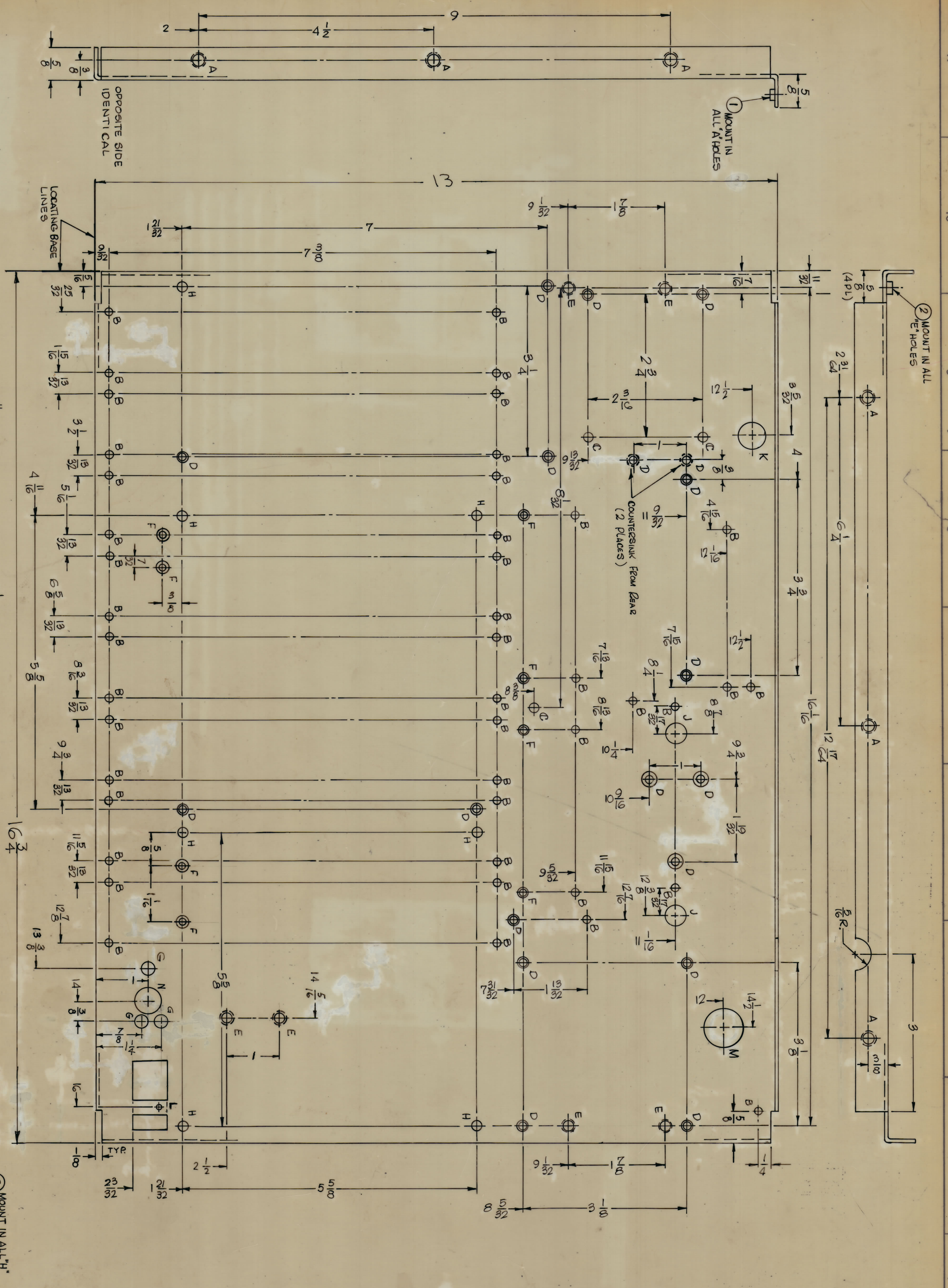
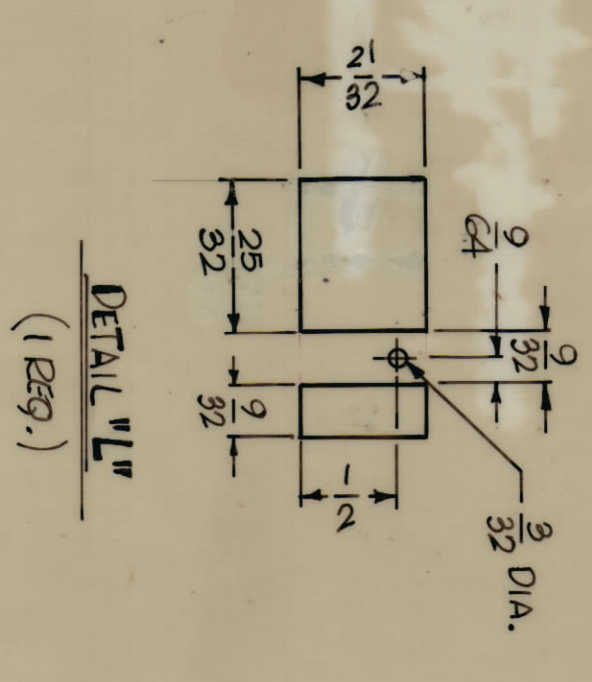


REV.	DATE	BY	CHKD.	APPD.
X	1/16/64	X	BLA	
D	9/25/64	D	RNE	
A	1/18/61			
B	7-5-61	LAK		

NO.	DESCRIPTION	REQ.
A	.221-.224 DIA	9
B	9/64 DIA	44
C	11/64 DIA.	8
D	.144 DIA. ±.001 DIA. 82° TO .184 DIA.	18
E	.191-.194 DIA	4
F	.120 DIA. ±.001 DIA. 82° TO .130 DIA.	8
G	1/40 DIA.	3
H	3/16 DIA.	7
J	3/8 DIA	2
K	1/2 DIA	1
L	SEE DETAIL	1
M	3/4 DIA.	1
N	5/16 DIA.	1



REF: LD 2152

NO.	ITEM	DESCRIPTION	QTY.
3	TE 108-19	STAND OFF SCREW TYPE	H
4	NT 129-632-4	NUT ROUND SWAGE TYPE	E
9	NT 129-832-4	NUT ROUND SWAGE TYPE	A

THE TECHNICAL MATERIAL CORP.
HAMARONCK, NEW YORK

CHASSIS, ELECTRICAL EQUIPMENT

MS5049 B

1. USE MATERIAL THICKNESS FOR MAXIMUM RADIUS ON ALL BENDS 90 DEGREES
2. ALL ANGULAR BENDS 90 DEGREES
3. REMOVE ALL BURRS AND SHARP EDGES
4. MOUNT INSERTS AFTER FINISHING

UNLESS OTHERWISE SPECIFIED:

11

10

9

8

7

6

5

4

3

2

1

MS5049 B