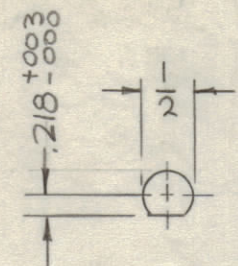
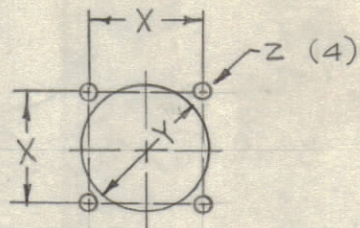


HOLE	DESCRIPTION	REQ.
A	11/64 DIA.	4
B	15/64 DIA.	4
C	SEE DETAIL	6
D		1
E		4
F	SEE DETAIL	1
G	9/64 DIA.	4
H	SEE DETAIL	1
J	SEE DETAIL	2

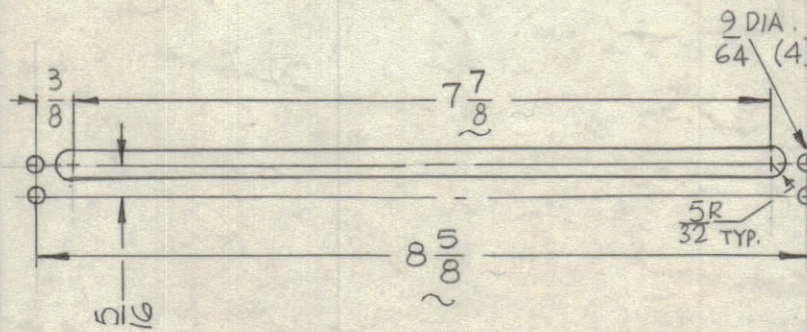


DETAIL - C



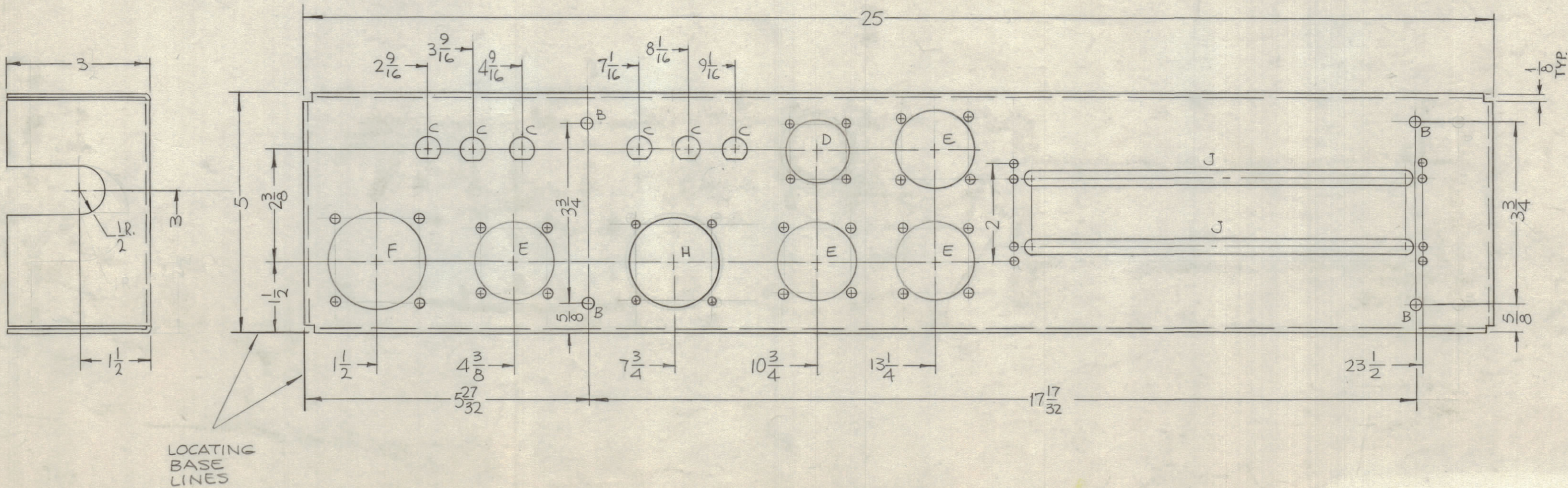
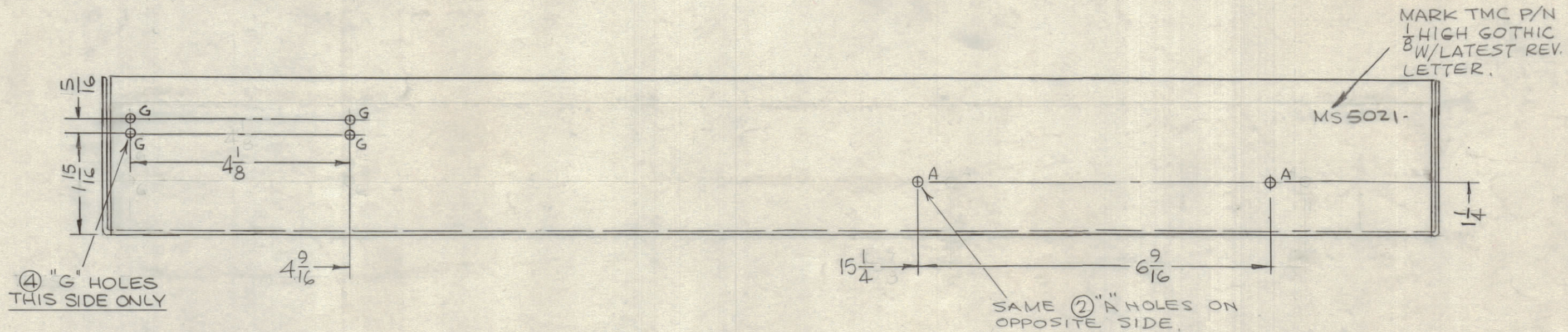
DETAIL	X	Y DIA.	Z DIA.
D	1-5/32	1-5/16	9/64
E	1-3/8	1-5/8	11/64
F	1-3/4	2-1/8	11/64
H	1-9/16	1-7/8	11/64

DETAIL D, E, F & H



DETAIL - J

REVISIONS					
ZONE	SYM	DESCRIPTION	DATE	E.M.N. NO.	APPD
	X	EXP. RELEASE	7-12-66	X	[Signature]
	X1	1-15/16 WAS 1-1/4, 1 H ADDED, (IF DELETED)	8-25-66	X1	[Signature]
	X2	DETAIL "J" WAS DETAIL "G" (ERROR "C" EXISTS ALREADY)	11/20/66	VM	Jc
	Ø	ORIGINAL RELEASE FOR PRODUCTION	12/13/66	VM	LHD
	A	REF: LD2317 WAS LD2118	6.6.68	C.C.	[Signature]



- UNLESS OTHERWISE SPECIFIED:
1. USE MATERIAL THICKNESS FOR MAXIMUM RADIUS ON ALL BENDS
 2. ALL ANGULAR BENDS 90 DEGREES
 3. REMOVE ALL BURRS AND SHARP EDGES

NOTES

Q'TY./UNIT	MODEL USED ON	ASS'Y. NO.
SCALE 1:2	CODE A	RAK-110-2 BMA160
THE CONTENTS OF THIS DRAWING ARE THE EXCLUSIVE PROPERTY OF THE TECHNICAL MATERIEL CORP. ITS UNAUTHORIZED USE OR REPRODUCTION IN WHOLE OR IN PART IS STRICTLY FORBIDDEN.		

REF: LD2317					
REQ'D.	ITEM	PART NUMBER	DESCRIPTION	SYMBOL	
F. BUDETTI LIST OF MATERIAL					
MATERIAL .081 ALUMINUM 5052-H 32			THE TECHNICAL MATERIEL CORP. MAMARONECK, NEW YORK		
FINISH S404 YEL. IRIDITE			TITLE CHASSIS, TERMINAL		
DRAWN	DATE	FINAL APPROVAL	DATE		
CHECKED	DATE	[Signature]	DATE		
ELECT. DES.	DATE	MS5021		A	
MECH. DES.	DATE	SHEET		REV. LTR.	

MS5021 A