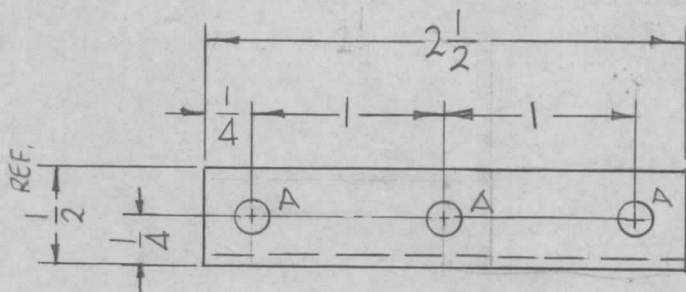


THIS DRAWING NO LONGER REQ.
AS OF 12-15-66

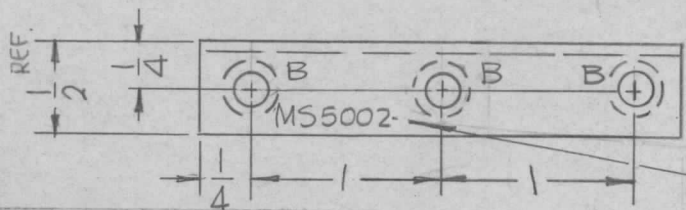
REQ. PER UNIT	USED ON			MS5002	Ø
	MODEL	ASS'Y. NO.	DATE		
2	TCSA-1	AX632	6-23-66		

HOLES:

- A - 5/32 DIA. (3REQ)
- B - DRILL .144 C'SINK 82° TO .284 DIA. (3REQ.)



① MARK IN ALL HOLES



MARK TMC P/N
1/8 HIGH GOTHIC
W/LATEST REV.
LETTER.

UNLESS OTHERWISE SPECIFIED:

1. USE MATERIAL THICKNESS FOR MAXIMUM RADIUS ON ALL BENDS
2. ALL ANGULAR BENDS 90 DEGREES
3. REMOVE ALL BURRS AND SHARP EDGES

Ø	ORIGINAL RELEASE FOR PRODUCTION	1/11/67	Ø	CV			REQ. ITEM	PART NO.	F. BUDETTI	DESCRIPTION	SYMBOL	
X ₁	NO LONGER REQ SEE NOTE	12-15-66		<i>DR</i>			1/2 X 1/2 X 1/16 <i>z</i>		THE TECHNICAL MATERIEL CORP. MAMARONECK, NEW YORK			
X	EXP. RELEASE	6-23-66	X	<i>DR</i>	<i>QCS</i>	<i>DR</i>	EXTRUDED ALUM.		SUPPORT, SERVO AMPL.			
SYM	DESCRIPTION	DATE	CH. NO.	DRAFTS	CHECKER	ENG. APP.	MATERIAL					
UNLESS OTHERWISE SPECIFIED DIMENSIONS ARE IN INCHES AND INCLUDE CHEMICALLY APPLIED OR PLATED FINISHES		SCALE		1:1			6063-T5		<i>DR</i>	<i>QCS</i>	<i>DR</i>	
DECIMALS .X ± .05 .XX ± .01 .XXX ± .005	TOLERANCES	FRACTIONS ± 1/64 ANGLES ± 0° 30'	CODE	A			S404 YEL IRIDITE		DRAWN		CHECKED	FINAL APPROVAL
						FINISH & SPEC. NO.		ELEC. DES. APP.	MECH. DES. APP.	MS5002 Ø		