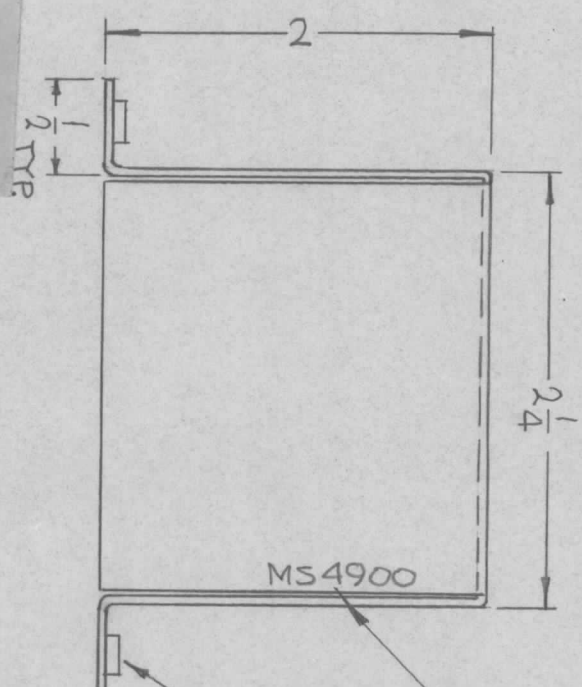


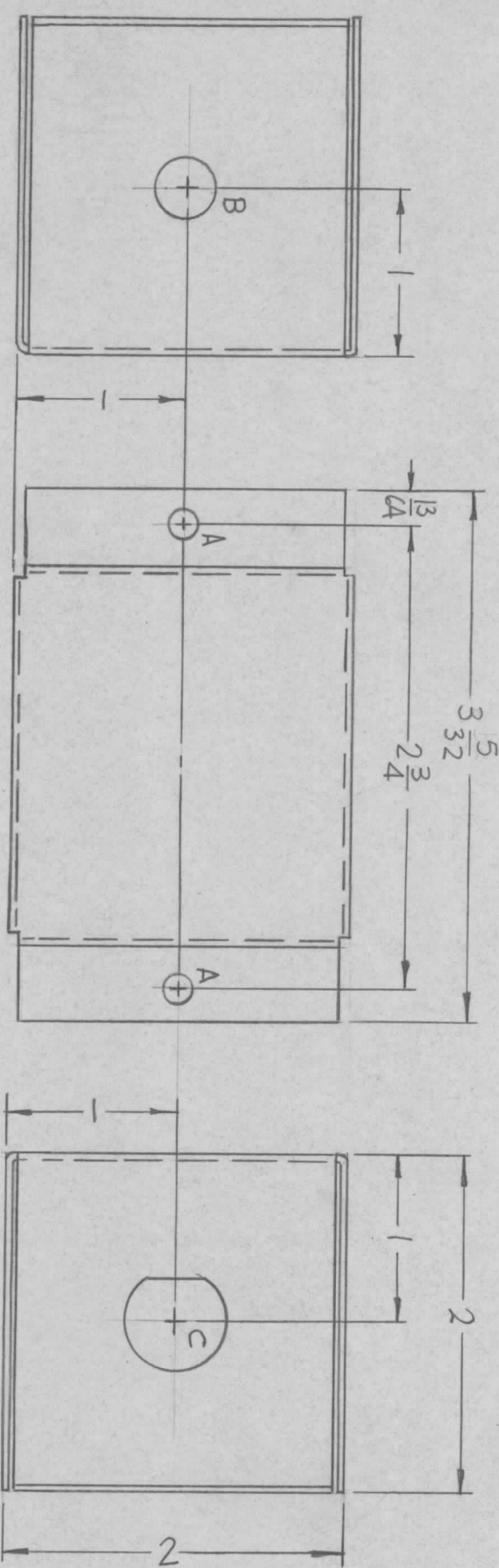
- UNLESS OTHERWISE SPECIFIED:
1. USE MATERIAL THICKNESS FOR MAXIMUM RADIUS ON ALL BENDS
 2. ALL ANGULAR BENDS 90 DEGREES
 3. REMOVE ALL BURRS AND SHARP EDGES
 4. MOUNT INSERTS AFTER FINISHING

NOTES

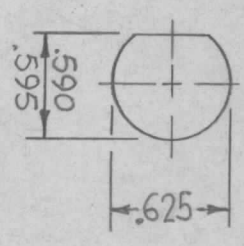


MARK TMC P/N
HIGH GOTHIC
W/LATEST REV.
LETTER.

① MOUNT IN
1/8" HOLES



HOLES:
A-.191-.194 DIA. (2REQ)
B-3/8 DIA. (1REQ.)
C-SEE DETAIL



C-DETAIL
(1REQ)

SYM	DESCRIPTION	DATE	E.M.N. NO.	DRAFT	CHKD	APPD
Ø	ORIGINAL RELEASE FOR PRODUCTION	4-12-66	Ø	G.D.L.		
A	CHG'D ASSY NO. FR AX531 TO AX534	8-18-66	CC	RME		
B	REF: LD22520 GPT-10KLF ADDED	11/30/67	CC	Emp		

REVISIONS

LD 2252 - GPT-10 KLF
REF: LD 2066 - GPT-10KLF AX 534

REQ'D	ITEM	PART NUMBER	DESCRIPTION	SYMBOL
2	1	NT 129-632-3	NUT, PLAIN, SPLINE	A

F. BUDETTI
MATERIAL
.051 THICK ALUMINUM
5052-H32

LIST OF MATERIAL
THE TECHNICAL MATERIEL CORP.
MAMARONECK, NEW YORK

FINISH
S404 YEL. IRIDITE
TITLE
BOX, MTG. FUSE

QTY./UNIT	1	GPT-10KLF	MODEL USED ON	AX 534
SCALE	1:1	GPT-10KLF	CODE	A

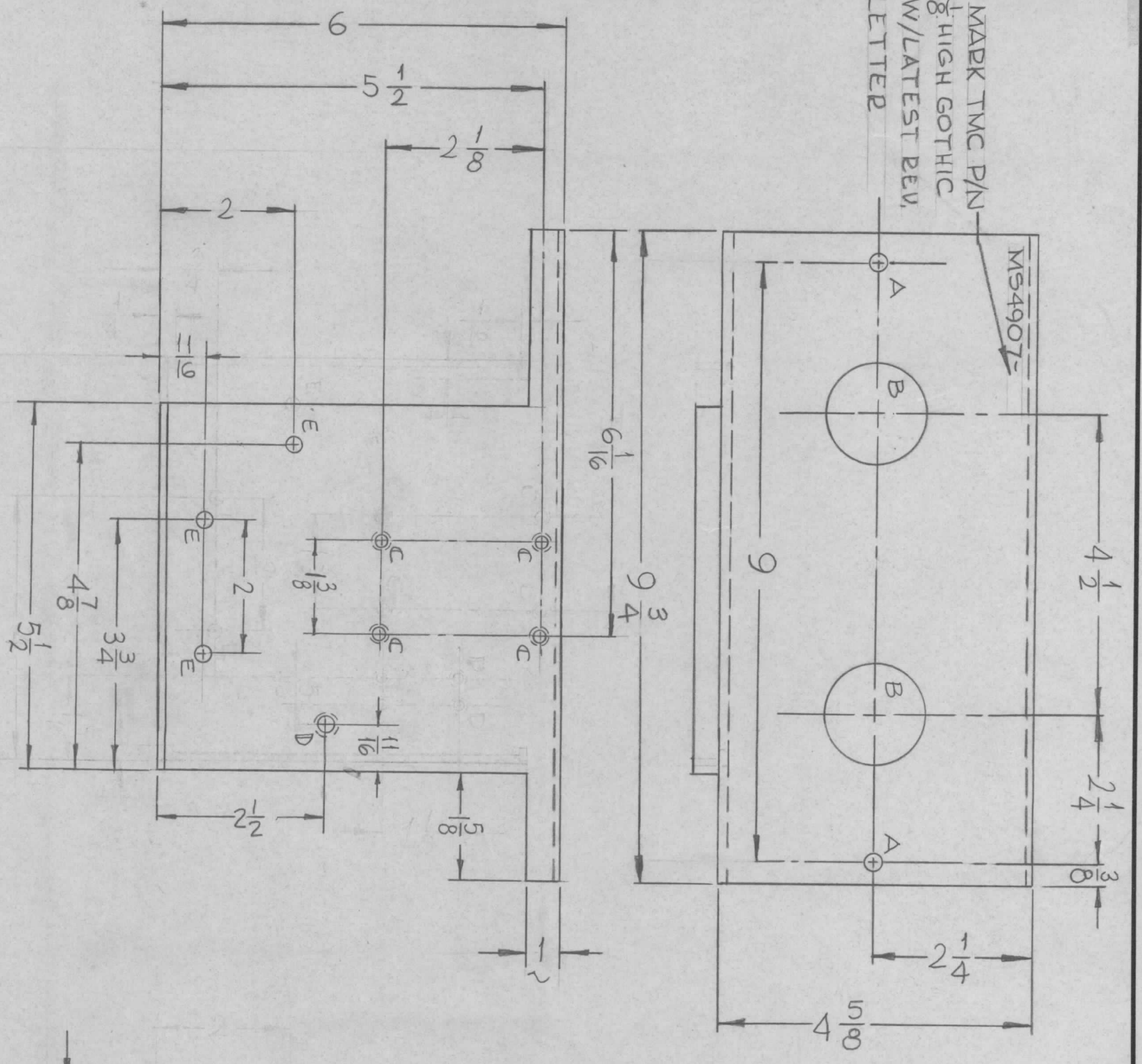
DECIMALS	TOLERANCES	FRACTIONS	ANGLES
.X ± .05		± 1/64	
.XX ± .01		± 1/32	
.XXX ± .005		± 0° 30'	

DRAWN	CHECKED	ELECT. DES.	MECH. DES.	DATE	DATE	DATE	DATE
				3-23-66	3/28/66	4-7-66	4/7/66

FINAL APPROVAL	DATE	REV. LTR.
	4/7/66	B

THE CONTENTS OF THIS DRAWING ARE THE EXCLUSIVE PROPERTY OF THE TECHNICAL MATERIEL CORP. ITS UNAUTHORIZED USE OR REPRODUCTION IN WHOLE OR IN PART IS STRICTLY FORBIDDEN.

MARK TMC P/N
 1/8 HIGH GOTHIC
 W/LATEST REV.
 LETTER



MS4907

SYM	DESCRIPTION	DATE	E.M.N. NO.	DRAFT	CHKD	APPD
X	EXPERIMENTAL RELEASE	4-3-66	-	WTD	WTD	
Ø	ORIGINAL RELEASE FOR PRODUCTION	7/30/66	Ø	CV	Ø	

HOLE	DESCRIPTION	REQD
A	5/16 DIA	2
B	1 1/2 DIA	2
C	.191-.194 DIA	4
D	.221-.224 DIA.	1
E	15/64 DIA	3

MOUNT ITEM ① IN ALL
 "C" HOLES AS SHOWN
 MOUNT ITEM ② IN
 "D" HOLE AS SHOWN.

REQ'D.	ITEM	PART NUMBER	DESCRIPTION	SYMBOL
1	2	NT129-832-6	NUT, PLAIN, SPLINE	D
4	1	NT129-632-6	NUT, PLAIN, SPLINE	C

MATERIAL	TITLE
1/8 ALUM 5052-H32	BRACKET, CAP, MTG
S404-YELLOW IRIDITE	

UNLESS OTHERWISE SPECIFIED	DECIMALS	FRACTIONS	TOLERANCES
DIMENSIONS ARE IN INCHES AND INCLUDE CHEMICALLY APPLIED OR PLATED FINISHES	X ± .05	± 1/64	± .005
	.XX ± .01	ANGLES ± 0° 30'	
	.XXX ± .005		

REF: LD2093-

QTY./UNIT	AP129	AS362
MODEL USED ON	CODE	ASSY. NO.
1	A	

SCALE 1:2

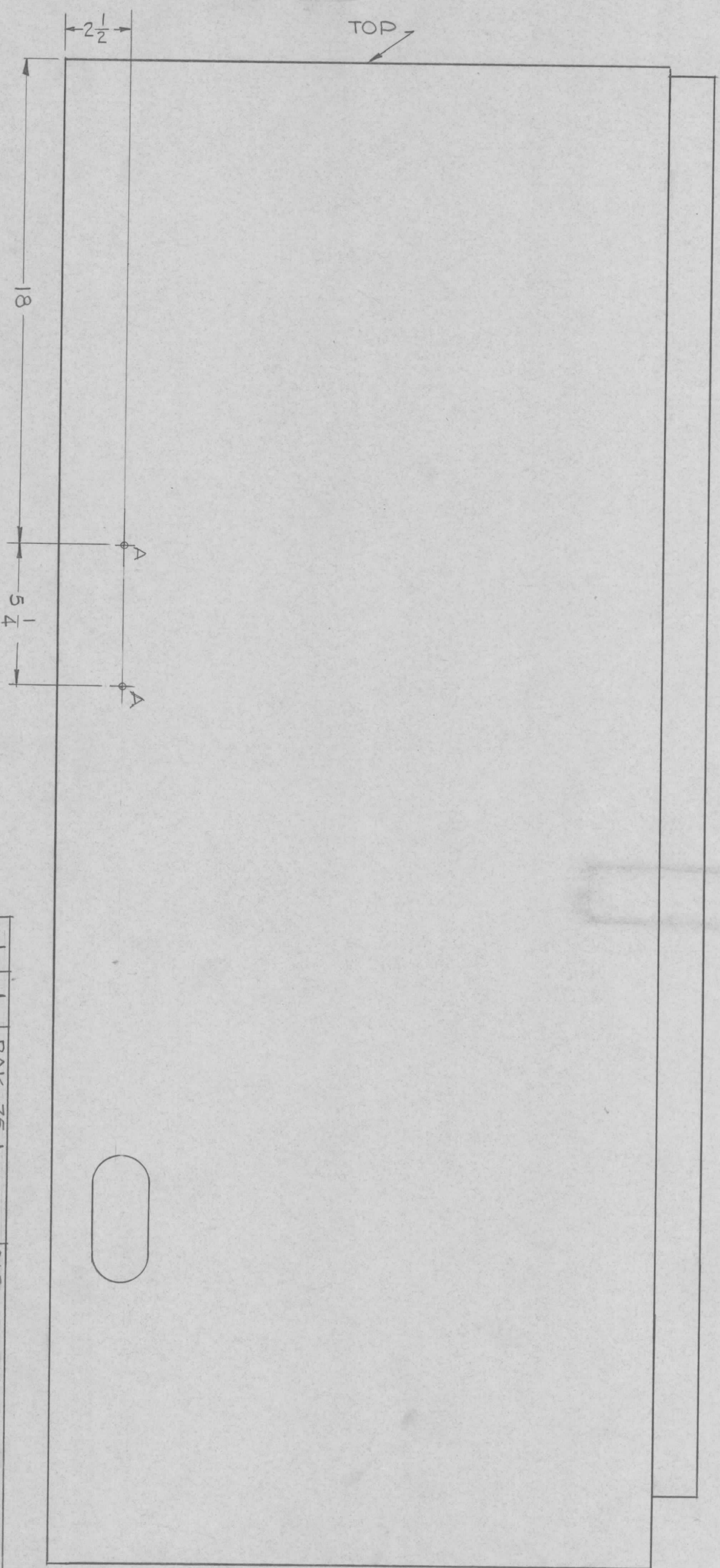
NOTES

THE CONTENTS OF THIS DRAWING ARE THE EXCLUSIVE PROPERTY OF THE TECHNICAL MATERIEL CORP. ITS UNAUTHORIZED USE OR REPRODUCTION IN WHOLE OR IN PART IS STRICTLY FORBIDDEN.

THE TECHNICAL MATERIEL CORP.
 MAMARONECK, NEW YORK

DRAWN	CHECKED	ELECT. DES.	MECH. DES.	DATE	DATE	DATE	DATE
WTD	WTD	WTD	WTD	4-11-66	11-19-66	11-23-66	12/1/66

REVISIONS						
SYM	DESCRIPTION	DATE	E.M.N. NO.	DRAFT	CHKD	APRD
Ø	ORIGINAL RELEASE FOR PRODUCTION	6/9/66	Ø	CV		<i>[Signature]</i>



HOLE	DESCRIPTION	REQ
A	11/64 DIA.	2

NOTES

QTY./UNIT	1	VLFC-1	MODEL USED ON	RAK-43	ASSY. NO.
SCALE	DO NOT SCALE	A	CODE		

THE CONTENTS OF THIS DRAWING ARE THE EXCLUSIVE PROPERTY OF THE TECHNICAL MATERIEL CORP. ITS UNAUTHORIZED USE OR REPRODUCTION IN WHOLE OR IN PART IS STRICTLY FORBIDDEN.

REQ'D.	ITEM	PART NUMBER	DESCRIPTION	SYMBOL
1	1	RAK-75-1	CABINET, ELECTRICAL EQUIPMENT, 69 HEIGHT	

POSE

MATERIAL	TITLE
UNLESS OTHERWISE SPECIFIED DIMENSIONS ARE IN INCHES AND INCLUDE CHEMICALLY APPLIED OR PLATED FINISHES	CABINET, ELEC, EQUIP. MODIFIED

DECIMALS	FRACTIONS	TOLERANCES	ANGLES
.X ± .05	± 1/64		± 0° 30'
.XX ± .01			
.XXX ± .005			

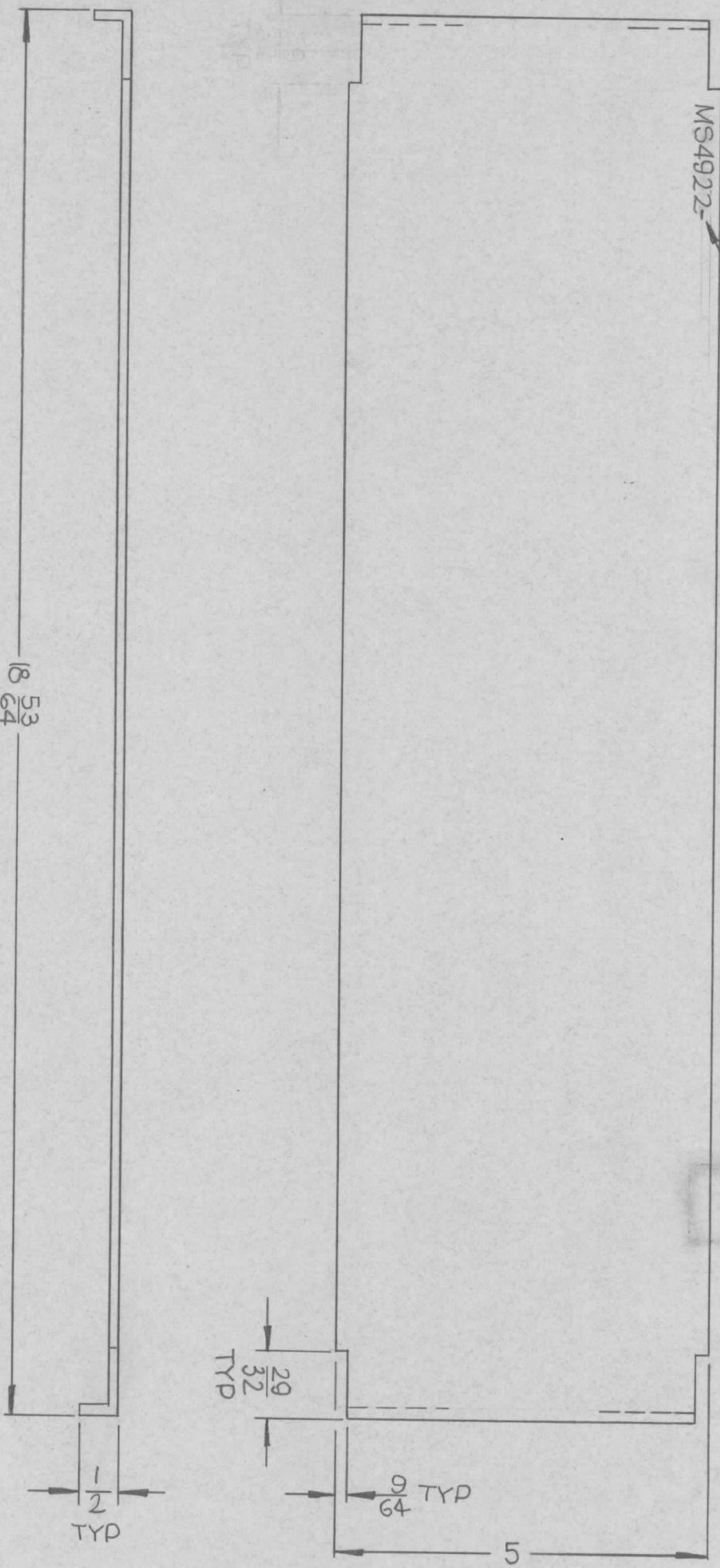
DRAWN	CHECKED	ELECT. DES.	MECH. DES.	DATE	DATE	DATE	DATE	DATE
G.D.L.	<i>[Signature]</i>	<i>[Signature]</i>	<i>[Signature]</i>	4-22-64	4-27-66			

FINAL APPROVAL: *[Signature]*

MS	DATE	REV. LTR.
MS 4915	4/15/66	Ø

~ LEFT SIDE VIEW ~

MARK TMC PART NUMBER
 5 HIGH GOTHIC W/LATEST
 REVISION LETTER



REVISIONS		DATE	E.M.N. NO.	DRAFT	CHKD	APPD
Ø	ORIGINAL RELEASE FOR PRODUCTION	2/18/69		Ø		

Q'TY./UNIT	KIT 272	MODEL USED ON	ASS'Y. NO.
SCALE	KIT 271		5/9/66

REQ'D.	ITEM	PART NUMBER	DESCRIPTION	SYMBOL
	MATERIAL			
		.081 ALUMINUM, 5052-H32		
	FINISH	S404 IRIDITE		

LIST OF MATERIAL			
DRAWN	CHECKED	DATE	FINAL APPROVAL
WHD	[Signature]	5-5-66	[Signature]
		5-11-66	

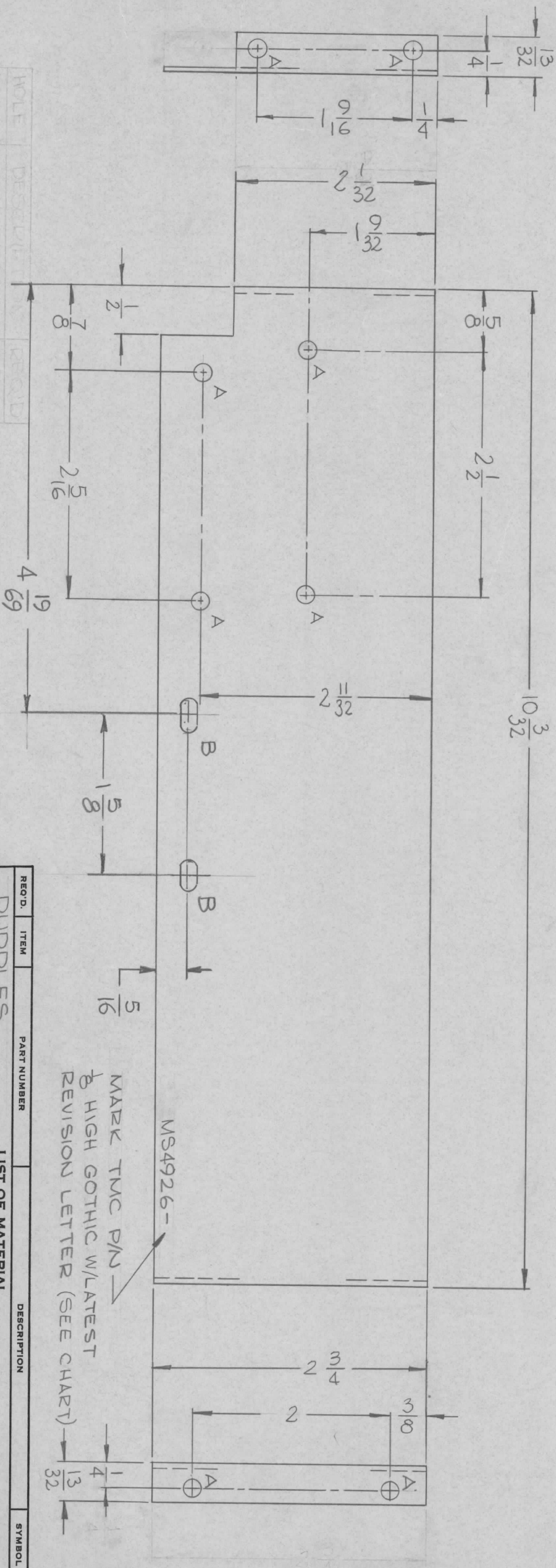
DESCRIPT.	THE TECHNICAL MATERIEL CORP. MAMARONECK, NEW YORK
TITLE	COVER, TOP/BOTTOM
DRAWN	WHD
CHECKED	[Signature]
ELECT. DES.	
MECH. DES.	
DATE	5-5-66
DATE	5-11-66
DATE	8/18/69
SHEET	MS4922
REV. LTR.	Ø

TMC P/N	VIEW	SIDE
MS4926-1	AS SHOWN	LEFT
MS4926-2	OPPOSITE HAND	RIGHT

HOLE	DESCRIPTION	REQ'D
A	11/64 DIA	8
B	11/64 X 11/32 SLOT	2

MS4926 A

SYM	DESCRIPTION	DATE	E.M.N. NO.	DRAFT	CHKD	APPD
X	EXPERIMENTAL RELEASE	5.27.66		WHV	QAS	
Ø	ORIGINAL RELEASE FOR PRODUCTION	9/26/66		Ø	CV	
A	TWO 'B' HOLES ADDED	3-6-79	21221	GDL		



HOLE	DESCRIPTION	REQ'D
A	11/64 DIA	8
B	11/64 X 11/32	2

UNLESS OTHERWISE SPECIFIED:

1. USE MATERIAL THICKNESS FOR MAXIMUM RADIUS ON ALL BENDS
2. ALL ANGULAR BENDS 90 DEGREES
3. REMOVE ALL BURRS AND SHARP EDGES

NOTES

1 EA	CEA-2	A5521
QTY./UNIT	MODEL USED ON	ASSY. NO.
SCALE 1/1	CODE	

MATERIAL	FINISH
.063 THICK ALUMINUM 5052-H32	S404 YELLOW IRIDITE

UNLESS OTHERWISE SPECIFIED DIMENSIONS ARE IN INCHES AND INCLUDE CHEMICALLY APPLIED OR PLATED FINISHES	DECIMALS	FRACTIONS	TOLERANCES
	X ± .05 .XX ± .01 .XXX ± .005	± 1/64 ANGLES ± 0° 30'	

REQ'D.	ITEM	PART NUMBER	DESCRIPTION	SYMBOL
	DUDDLES			

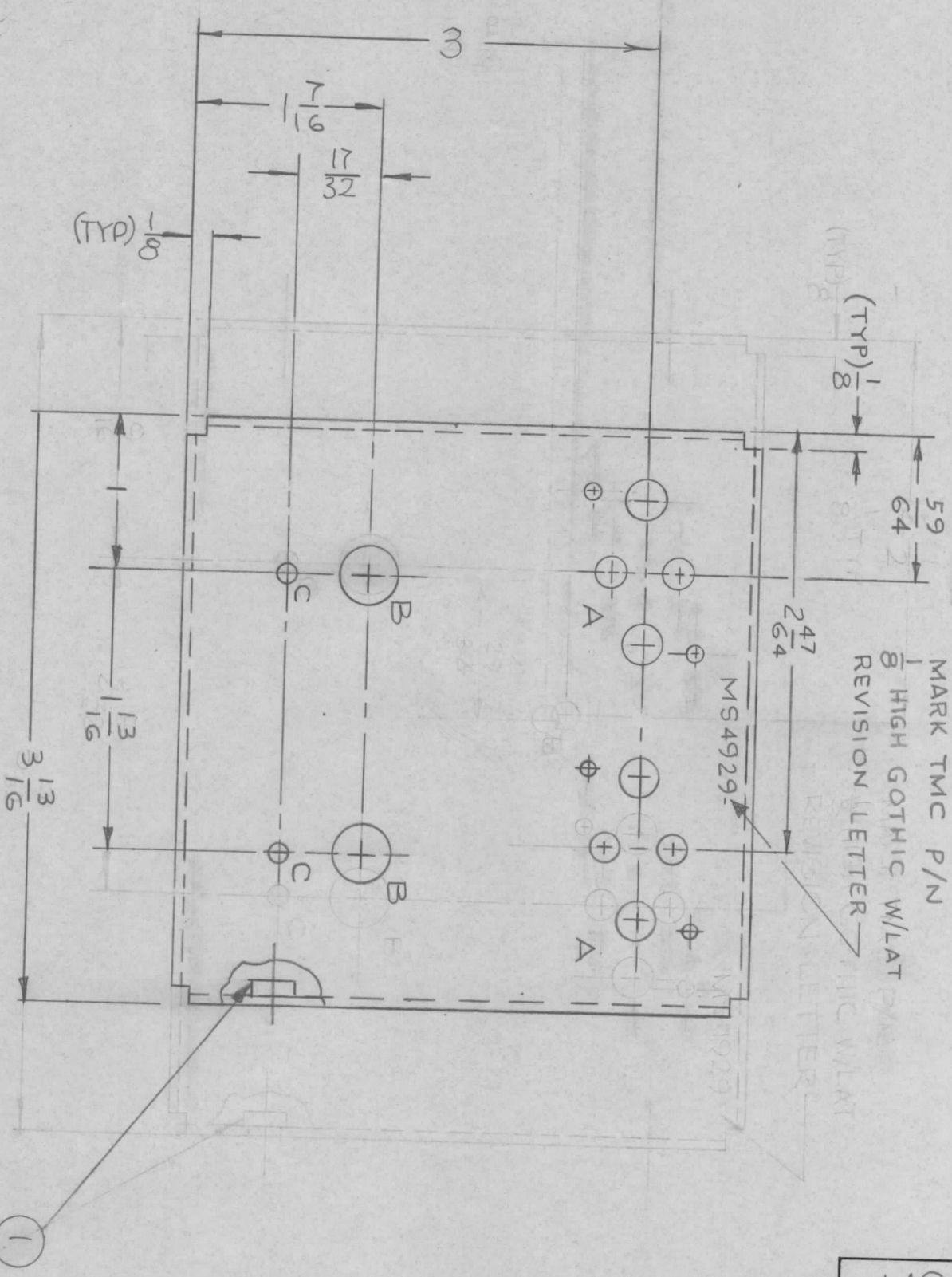
LIST OF MATERIAL

THE TECHNICAL MATERIEL CORP.
MAMARONECK, NEW YORK

TITLE	DATE	DATE	DATE
SHIELD BEFIT & RT SIDE	5.20.66	9-23-66	9/24/66

DRAWN	CHECKED	ELECT. DES.	MECH. DES.	DATE	DATE	DATE

- UNLESS OTHERWISE SPECIFIED:
1. USE MATERIAL THICKNESS FOR MAXIMUM RADIUS ON ALL BENDS
 2. ALL ANGULAR BENDS 90 DEGREES
 3. REMOVE ALL BURRS AND SHARP EDGES
 4. MOUNT INSERTS AFTER FINISHING



MARK TMC P/N
 1/8 HIGH GOTHIC W/LAT
 REVISION LETTER

MOUNT IN ALL "D" HOLES AS SHOWN

REF: LD2090

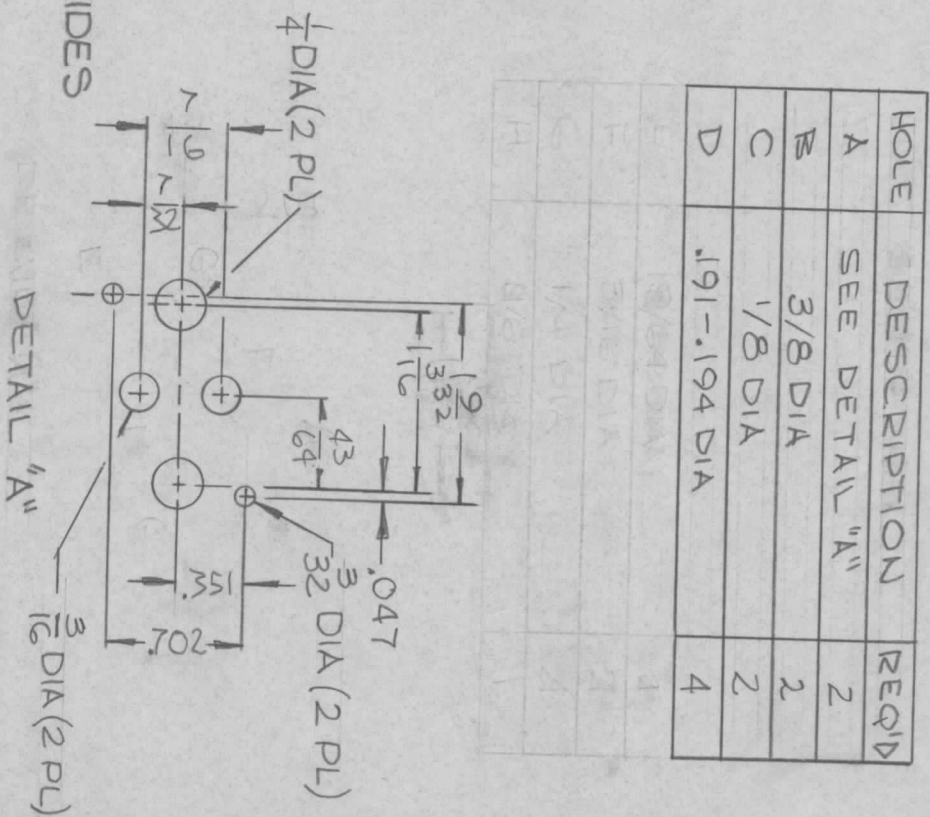
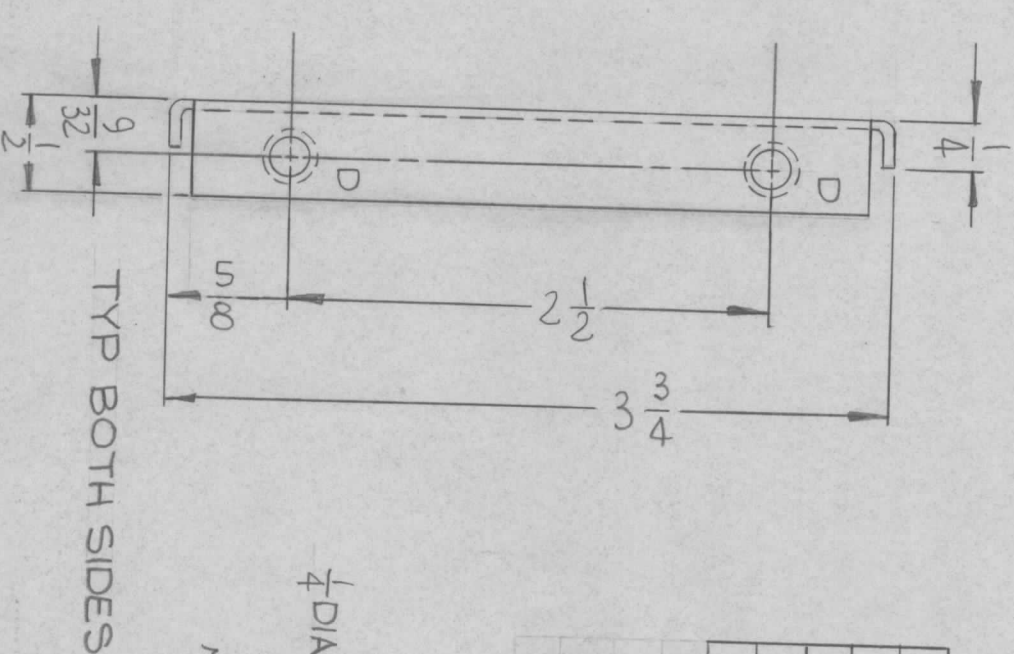
QTY./UNIT	1	MODEL USED ON	CFA-2	ASSY. NO.	AS524
SCALE	1/1				

NOTES

THE CONTENTS OF THIS DRAWING ARE THE EXCLUSIVE PROPERTY OF THE TECHNICAL MATERIEL CORP. ITS UNAUTHORIZED USE OR REPRODUCTION IN WHOLE OR IN PART IS STRICTLY FORBIDDEN.

SYMBOL		DESCRIPTION	DATE	EM.N. NO.	DRAFT	CHKD	APPD
X		EXPERIMENTAL RELEASE	5.27.66		WHD		AD
X1		1" H" HOLE ADDED	6.1.66		WHD		AD
X2		COMPLETELY REVISED	8-24-66		JBC		AD
X3		1" H" HOLE (11/64 DIA.) DELETED	9/23/66		JC		AD
Ø		ORIGINAL RELEASE FOR PRODUCTION	9/26/66		CV		AD

MS4929



REQ'D.	ITEM	PART NUMBER	DESCRIPTION	SYMBOL
4	1	NT129-632-4	NUT, PLAIN SPLINE	D

DUDDLES

MATERIAL
 .063 THICK, ALUMINUM,
 5052-H32

FINISH
 S404 YELLOW IRIDIOTE

LIST OF MATERIAL		THE TECHNICAL MATERIEL CORP.	
TITLE		MAMARONECK, NEW YORK	
DRAWN	WHD	DATE	5.20.66
CHECKED	JBC	DATE	
ELECT. DES.	JBC	DATE	8-23-66
MECH. DES.	JC	DATE	

UNLESS OTHERWISE SPECIFIED DIMENSIONS ARE IN INCHES AND INCLUDE CHEMICALLY APPLIED OR PLATED FINISHES

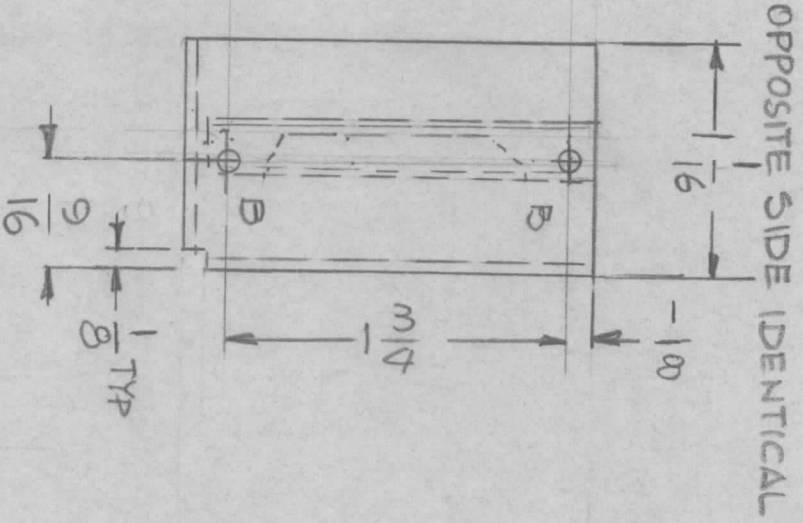
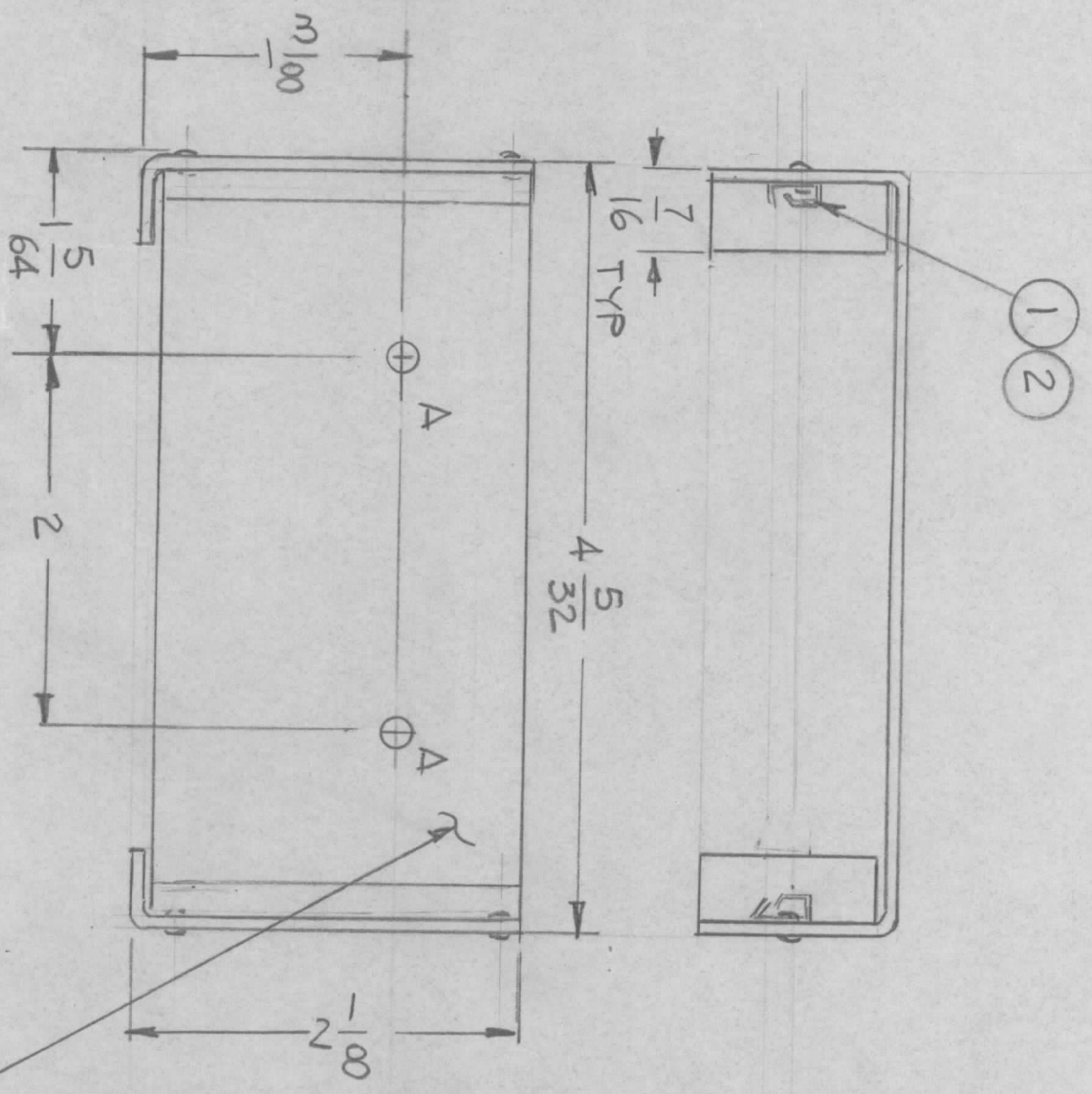
DECIMALS
 X ± .05
 XX ± .01
 XXX ± .005

FRACTIONS
 ± 1/64
 ANGLES
 ± 0° 30'

PLATE, MTG, SWITCH

MS4929

REVISIONS				DATE	APPROVED
EMN NO	DRAFT	CHKD	ZONE	LTR	DESCRIPTION
2197A	GDL			Δ	REDDAWN & REVISED WAS ON SIZE "A"
					3.14.82



- HOLES -
 A - 11/64 DIA 2 REQ'D
 B - .067 DIA 4 REQ'D

MARK TMC P/NO 1/8 HIGH
 GOTHIC W/LATEST REV.
 LETTER

REQ'D ITEM	PART NUMBER	DESCRIPTION	SYM.
4	2	EY100-5	
2	1	CU157-2	
		RETAINER PC BD	

THE TECHNICAL MATERIEL CORP.
 MAMARONECK, NEW YORK

BRKT, MOUNTING
 RISER CARD

- UNLESS OTHERWISE SPECIFIED:
1. USE MATERIAL THICKNESS FOR MAXIMUM RADIUS ON ALL BENDS.
 2. ALL ANGULAR BENDS 90 DEGREES.
 3. REMOVE ALL BURRS AND SHARP EDGES.
 4. MOUNT INSERTS AFTER FINISHING.

QTY / UNIT	CFD-2	ASSY NO.	A5521
MODEL USED ON		APPLICATION	
CODE			

NOTICE TO PERSONS RECEIVING THIS DRAWING
 THE TECHNICAL MATERIEL CORPORATION claims proprietary right in the material disclosed hereon. This drawing is issued in confidence for engineering information only and may not be reproduced or used to manufacture anything shown hereon without permission from THE TECHNICAL MATERIEL CORPORATION to the user. This drawing is loaned for mutual assistance and is subject to recall at any time.

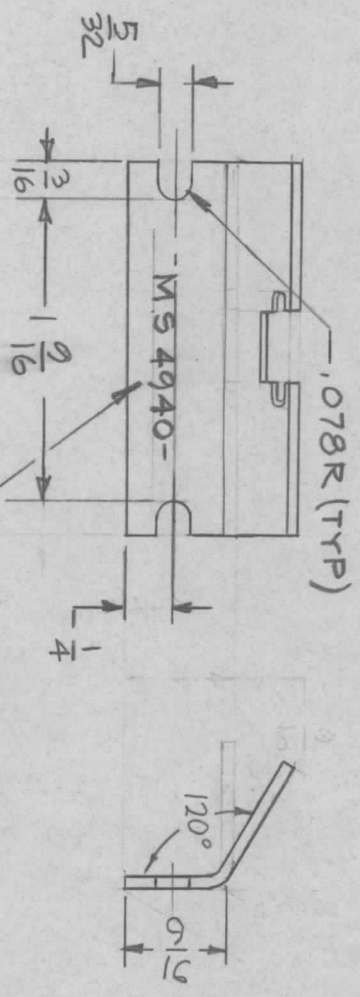
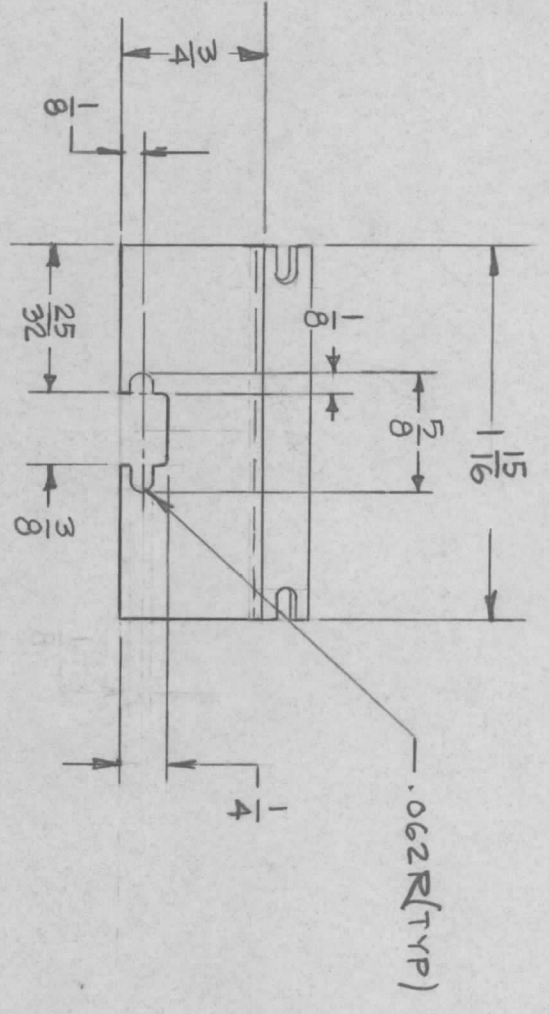
FINISH	S404	YEL IRIDITE	
MATERIAL	ALUM. 5052-H32		
DECIMALS	.X ± .05	FRACTIONS	1/64
.XX ± .01	TOLS.	ANGLES	90° .30'
.XXX ± .005			

FINAL APPROVAL	DATE
MECH. DES.	DATE
ELECT. DES.	DATE
CHECKED	DATE
DRAWN	DATE

SIZE	B	CODE IDENT. NO.	82679	DWG NO.	MS 4931	ISSUE	A
SCALE	1:1	SHEET		OF			

REVISIONS						
SYM	DESCRIPTION	DATE	E.M.N. NO.	DRAFT	CHKD	APPD
X 1	120° WAS 90°	10-7-66	X 1	<i>[Signature]</i>	<i>[Signature]</i>	<i>[Signature]</i>
Ø	ORIGINAL RELEASE FOR PRODUCTION	11-18-66	Ø	RME		

MS4940 Ø



MARK TMC PART NO. 1/8 HIGH GOTHIC, WITH LATEST REVISION NO.

- UNLESS OTHERWISE SPECIFIED:
1. USE MATERIAL THICKNESS FOR MAXIMUM RADIUS ON ALL BENDS
 2. ALL ANGULAR BENDS 90 DEGREES
 3. REMOVE ALL BURRS AND SHARP EDGES
 4. MOUNT INSERTS AFTER FINISHING

NOTES

Q'TY./UNIT	TLAA-2.5K	MODEL USED ON	AS492
SCALE	FULL SIZE	CODE	A

THE CONTENTS OF THIS DRAWING ARE THE EXCLUSIVE PROPERTY OF THE TECHNICAL MATERIAL CORP. ITS UNAUTHORIZED USE OR REPRODUCTION IN WHOLE OR IN PART IS STRICTLY FORBIDDEN.

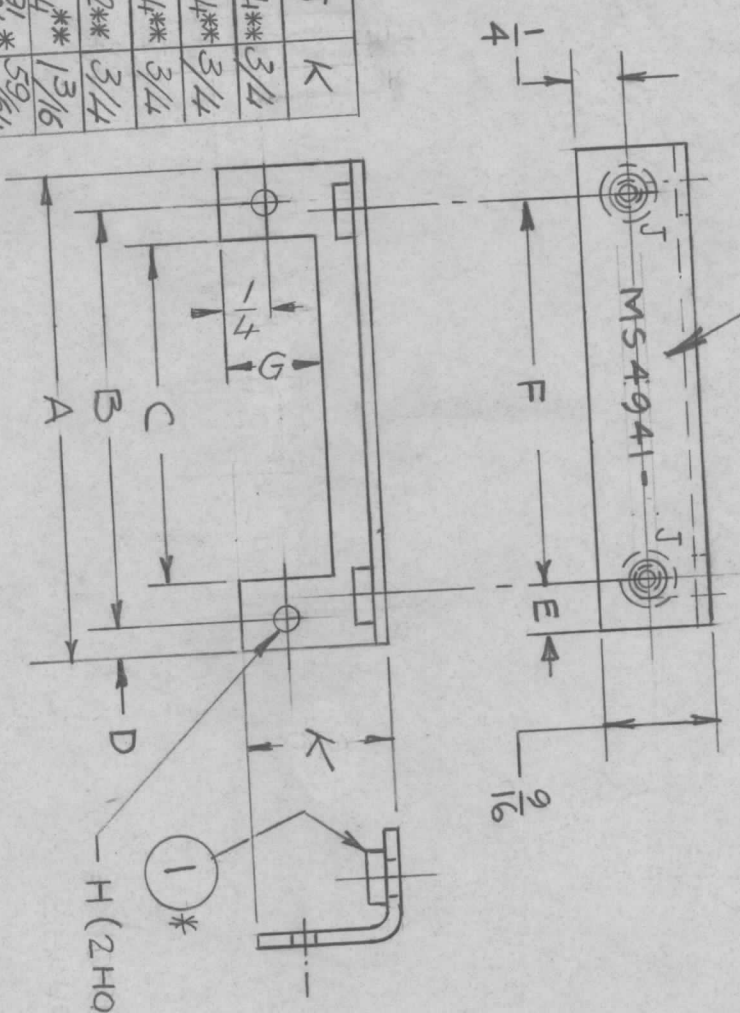
REQ'D.	ITEM	PART NUMBER	DESCRIPTION	SYMBOL
	F. BUDETTI		LIST OF MATERIAL	

MATERIAL	.064THK. ALUM. ALLOY 5052 H 32	TITLE	THE TECHNICAL MATERIEL CORP. MAMARONECK, NEW YORK
FINISH	IRIDITE S404		BRACKET, CONNECTOR MTG.

UNLESS OTHERWISE SPECIFIED DIMENSIONS ARE IN INCHES AND INCLUDE CHEMICALLY APPLIED OR PLATED FINISHES	DRAWN	E.L.	DATE	5-27-66	FINAL APPROVAL	DATE	11/18/66
DECIMALS .X ± .05 .XX ± .01 .XXX ± .005	CHECKED	<i>[Signature]</i>	DATE				
TOLERANCES	ELECT. DES.	<i>[Signature]</i>	DATE	11-17-66			
FRACTIONS ± 1/64 ANGLES ± 0° 30'	MECH. DES.	<i>[Signature]</i>	DATE	11-17-66			
					MS4940		

MARK TMC PART NO. $\frac{1}{8}$ " HIGH GOTHIC WITH LATEST REVISION NO.

TMC NO.	A	B	C	D	E	F	G	H	J	K
MS4941-1	2 1/2	2 5/32	1 3/4	1 1/4	1/4	2	1/2	5/32	1 1/64***	3/4
-2	2 1/4	1 55/64	1 43/64	.195	3/16	1 7/8	1/2	3 1DR	1 1/64***	3/4
-3	1 3/8	63/64	5 1/64	.195	.195	63/64	1/2	3 1DR	1 1/64***	3/4
-4	1 1/16	1 5/16	1 1/16	3/16	5/16	1 1/16	1/2	5/32	5/32***	3/4
-5	2 1/4	1 55/64	1 43/64	.195	1/4	1 3/4	1/2	5/32	3/64***	1 3/16
-6	3 3/8	2 61/64	2 11/16	.210	5/16	2 3/4	1/2	5/32	.194*	59/64



SYM	DESCRIPTION	DATE	E.M.N. NO.	DRAFT	CHKD
X	EXP. RELEASE	7-30-66	X	MS2	
X1	J COLUMN ADDED	8-1-66	X1	MS3	
X2	MS4941-1 J WAS .191-.194 DIA, NT129-632-4 DELETED	9-27-66	X2	MS4	
Ø	ORIGINAL RELEASE FOR PRODUCTION	2-28-66		MS5	
A	MS4941-4 ADDED	9/4/69	19580	MS6	
B	MS4941-5 & -6 ADD.	12/24/69	19692	MS7	

*-USE ITEM 1
 ** - ITEM 1 NOT REQUIRED

- UNLESS OTHERWISE SPECIFIED:
1. USE MATERIAL THICKNESS FOR MAXIMUM RADIUS ON ALL BENDS
 2. ALL ANGULAR BENDS 90 DEGREES
 3. REMOVE ALL BURRS AND SHARP EDGES
 4. MOUNT INSERTS AFTER FINISHING

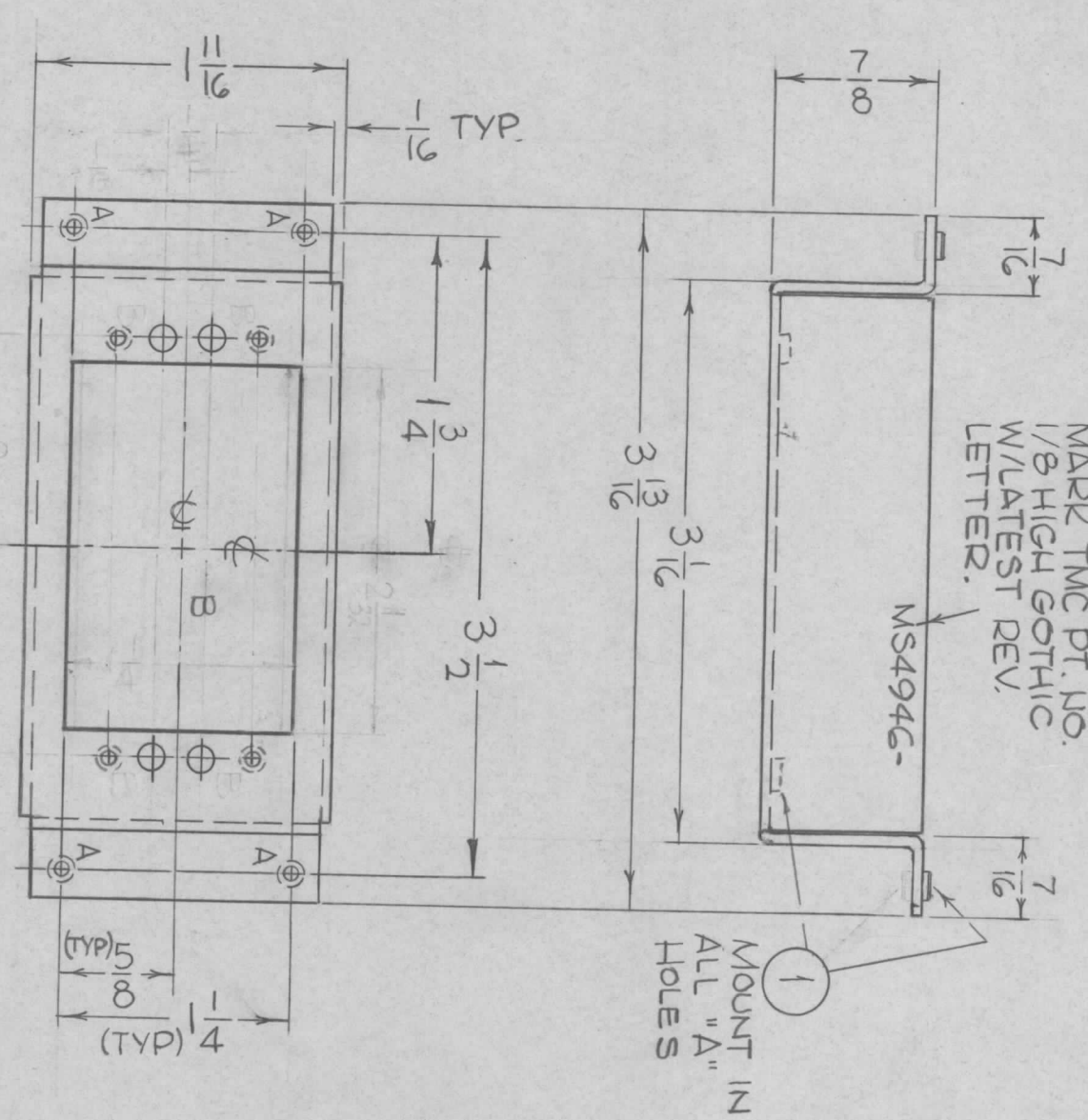
NOTES

QTY./UNIT	TLAA-2.5K	ASSY. NO.	AS495
SCALE	A	MODEL USED ON	

REQ'D.	ITEM	PART NUMBER	DESCRIPTION	SYMBOL
2	1	NT129-632-4	NUT, PLAIN, SPLINE	J
BUDETTI				
MATERIAL .064 THK ALUM. ALLOY 5052				
FINISH H32				
S404-1RDITE 14-2 AL COAT				

LIST OF MATERIAL		THE TECHNICAL MATERIEL CORP.	
BUDETTI		MAMARONECK, NEW YORK	
TITLE: BRACKET, CONNECTOR MTG			
DRAWN	F. L.	DATE	5-27-66
CHECKED	[Signature]	DATE	11-19-66
ELECT. DES.	[Signature]	DATE	
MECH. DES.	[Signature]	DATE	11-21-66
FINAL APPROVAL		[Signature]	DATE
SHEET		MS4941	REV. LTR.
REPROVEL. NO. 440H			

MARK TMC PT. NO.
1/8 HIGH GOTHIC
W/LATEST REV.
LETTER.



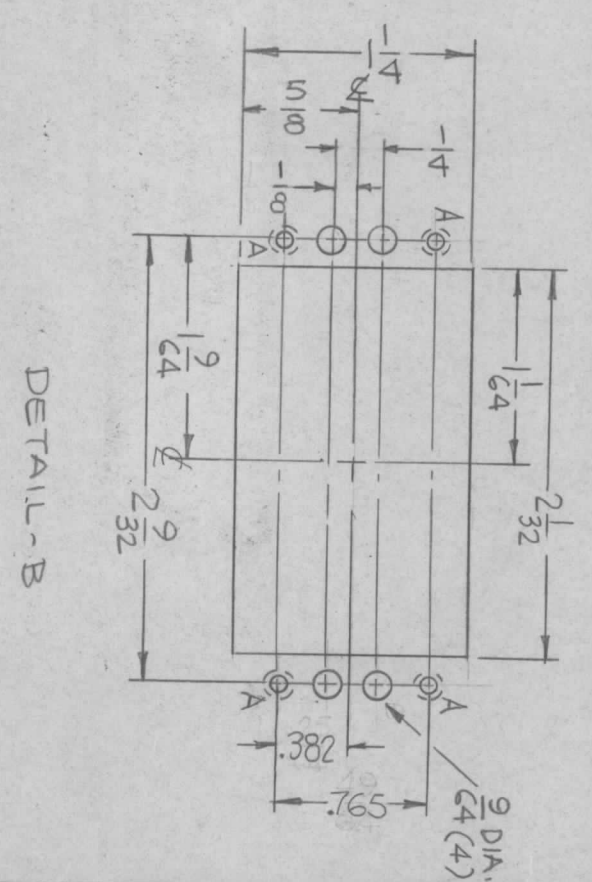
1 MOUNT IN
ALL "A"
HOLES

- UNLESS OTHERWISE SPECIFIED:
1. USE MATERIAL THICKNESS FOR MAXIMUM RADIUS ON ALL BENDS
 2. ALL ANGULAR BENDS 90 DEGREES
 3. REMOVE ALL BURRS AND SHARP EDGES
 4. MOUNT INSERTS AFTER FINISHING

MS4946

SYM	DESCRIPTION	DATE	E.M.N. NO.	DRAFT	CHKD	APPD
X	EXPERIMENTAL RELEASES	6-14-66	X	ALA	QB	QB
X1	IT1 REVERSED TO OTHER SIDE OF LIP	6-16-66	4	JC	QB	QB
X2	2-1/32 WAS 2	7-30-65	X2	MCA	QB	QB
X3	4 HOLES ADDED + 4 ITEM 1 ADDED ORIGINAL RELEASE FOR PRODUCTION	10-11-66	X3	MCA	QB	QB
Ø		11/14/66	Ø	RME	MS	MS

HOLES _____ REQ. _____
A-.161-.164 DIA.
B- SEE DETAIL _____



TMC FORM 109

NOTES

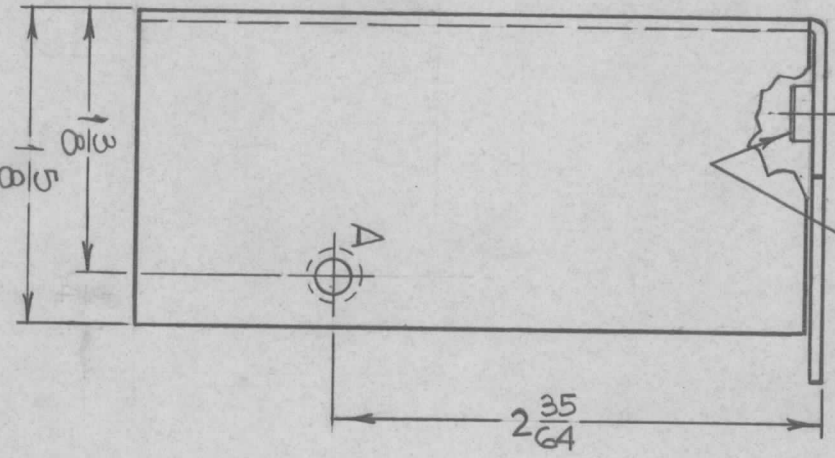
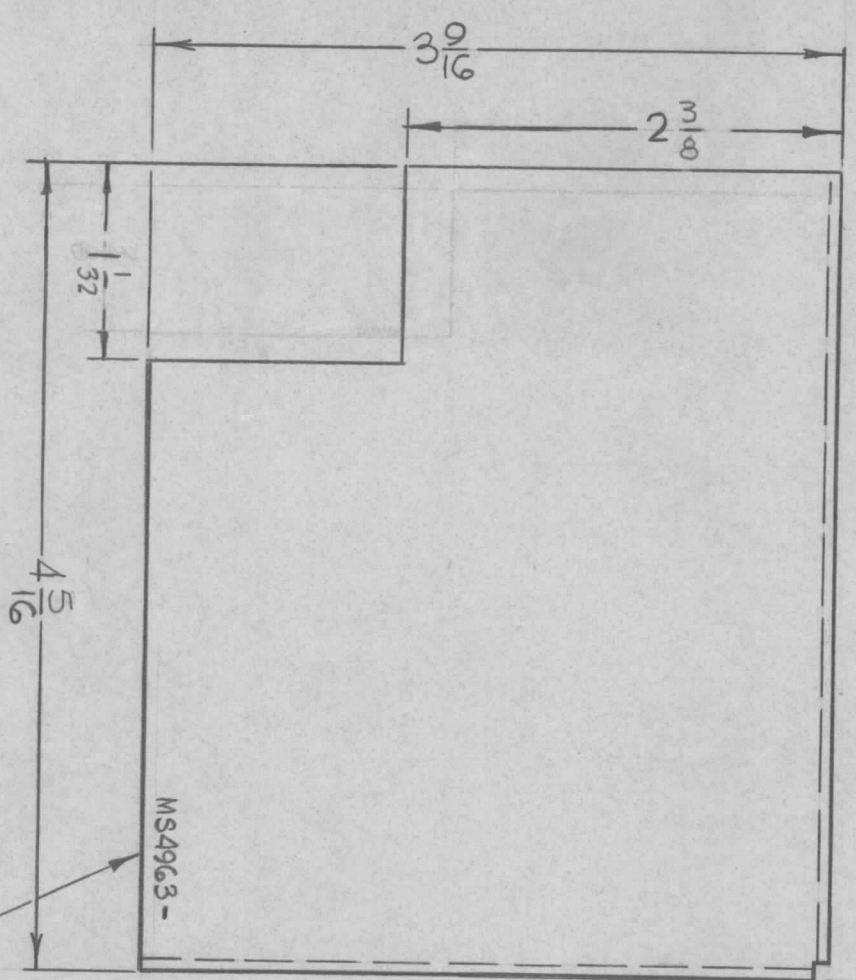
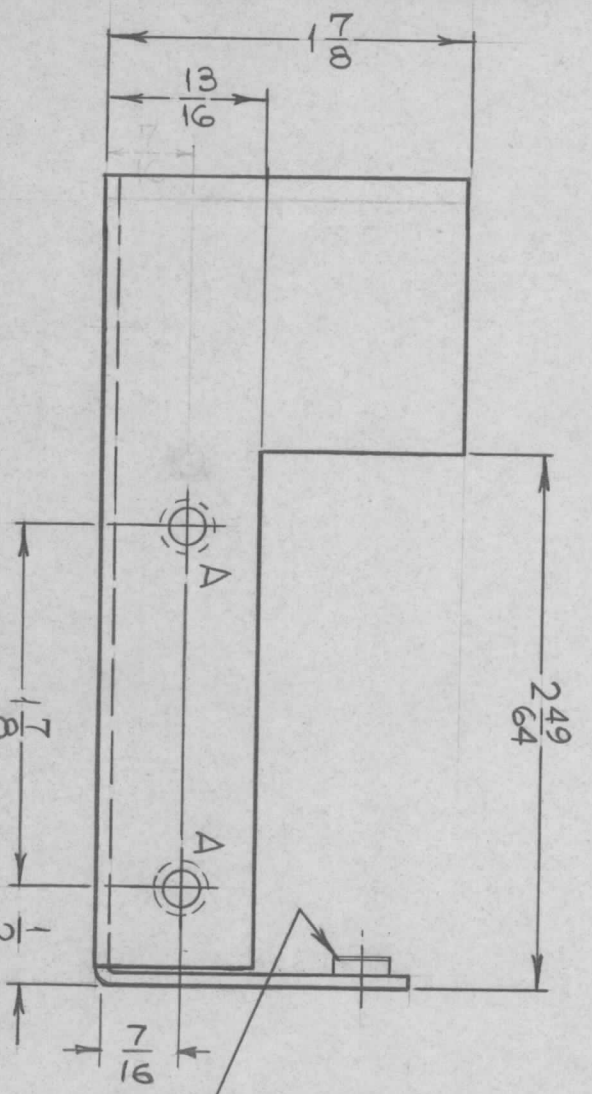
Q'TY./UNIT: 1 TLAA-2.5K ASSY. NO. AS497

MODEL USED ON: CODE: SCALE: THE CONTENTS OF THIS DRAWING ARE THE EXCLUSIVE PROPERTY OF THE TECHNICAL MATERIEL CORP. ITS UNAUTHORIZED USE OR REPRODUCTION IN WHOLE OR IN PART IS STRICTLY FORBIDDEN.

8	NT129-440-4	NUT, PLN, SPLINE	A
REQ'D. ITEM		PART NUMBER	DESCRIPTION
BUDETTI			
MATERIAL		LIST OF MATERIAL	
ALUMINUM, .062 THICK, 5052-H32		THE TECHNICAL MATERIEL CORP.	
FINISH		MAMARONECK, NEW YORK	
S402-IRIDITE, 14-2 ALLOY		BRACKET, CONN. MTG.	
TITLE			
DRAWN		DATE	FINAL APPROVAL
CHECKED		DATE	DATE
ELECT. DES.		DATE	DATE
MECH. DES.		DATE	DATE
		DATE	DATE
		DATE	DATE
		DATE	DATE

SYMBOL		DESCRIPTION	DATE	E.M.N. NO.	DRAFT	CHKD	APPD
X		EXPERIMENTAL RELEASE	6-20-66	X	HKA		
X1		4-5/16 WAS 4 1/2, 2 3/8 WAS 2, 1 1/2 WAS 3/4	7-19-66	X1	NOB		
Ø		ORIGINAL RELEASE FOR PRODUCTION	11-18-66	Ø	RME		

MS4963



1 MOUNT IN ALL "A" HOLES

A - .191 - .194 DIA. - 3 REQ'D.

UNLESS OTHERWISE SPECIFIED:
 1. USE MATERIAL THICKNESS FOR MAXIMUM RADIUS ON ALL BENDS
 2. ALL ANGULAR BENDS 90 DEGREES
 3. REMOVE ALL BURRS AND SHARP EDGES
 4. MOUNT INSERTS AFTER FINISHING

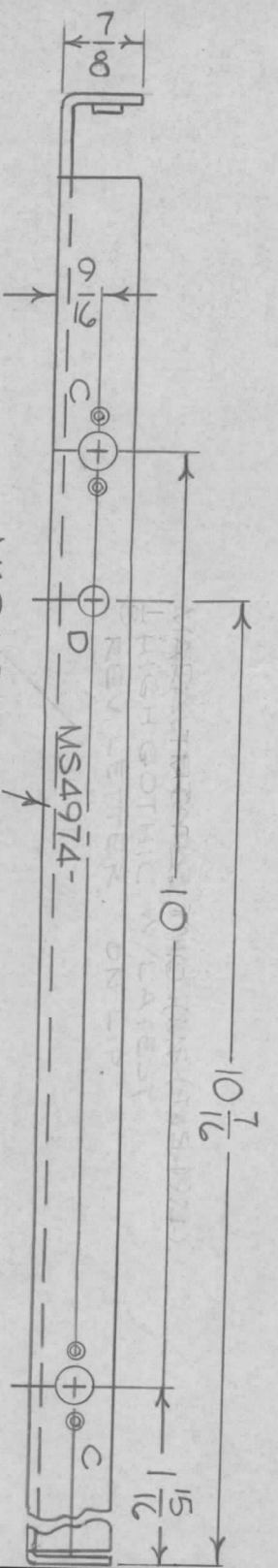
MARK TMC PART NO. 1/8 HIGH
 GOTHIC W/LATEST REV. LETTER

NOTES

Q'TY./UNIT	1	TLAA-2.5K	MODEL USED ON	AS497	ASSY. NO.
SCALE	1:1				

REQ'D.	ITEM	PART NUMBER	DESCRIPTION	SYMBOL
3	1	NT129-632-4	NUT, PLAIN, SPLINE	A
BUDETTI MATERIAL .064 THICK ALUMINUM-5052-H32 FINISH S404 YELLOW IRIDITE				
LIST OF MATERIAL UNLESS OTHERWISE SPECIFIED DIMENSIONS ARE IN INCHES AND INCLUDE CHEMICALLY APPLIED OR PLATED FINISHES DECIMALS .X ± .05 TOLERANCES .XX ± .01 .XXX ± .005 FRACTIONS ± 1/64 ANGLES ± 0° 30'			THE TECHNICAL MATERIEL CORP. MAMARONECK, NEW YORK SHIELD, RF CABLE	

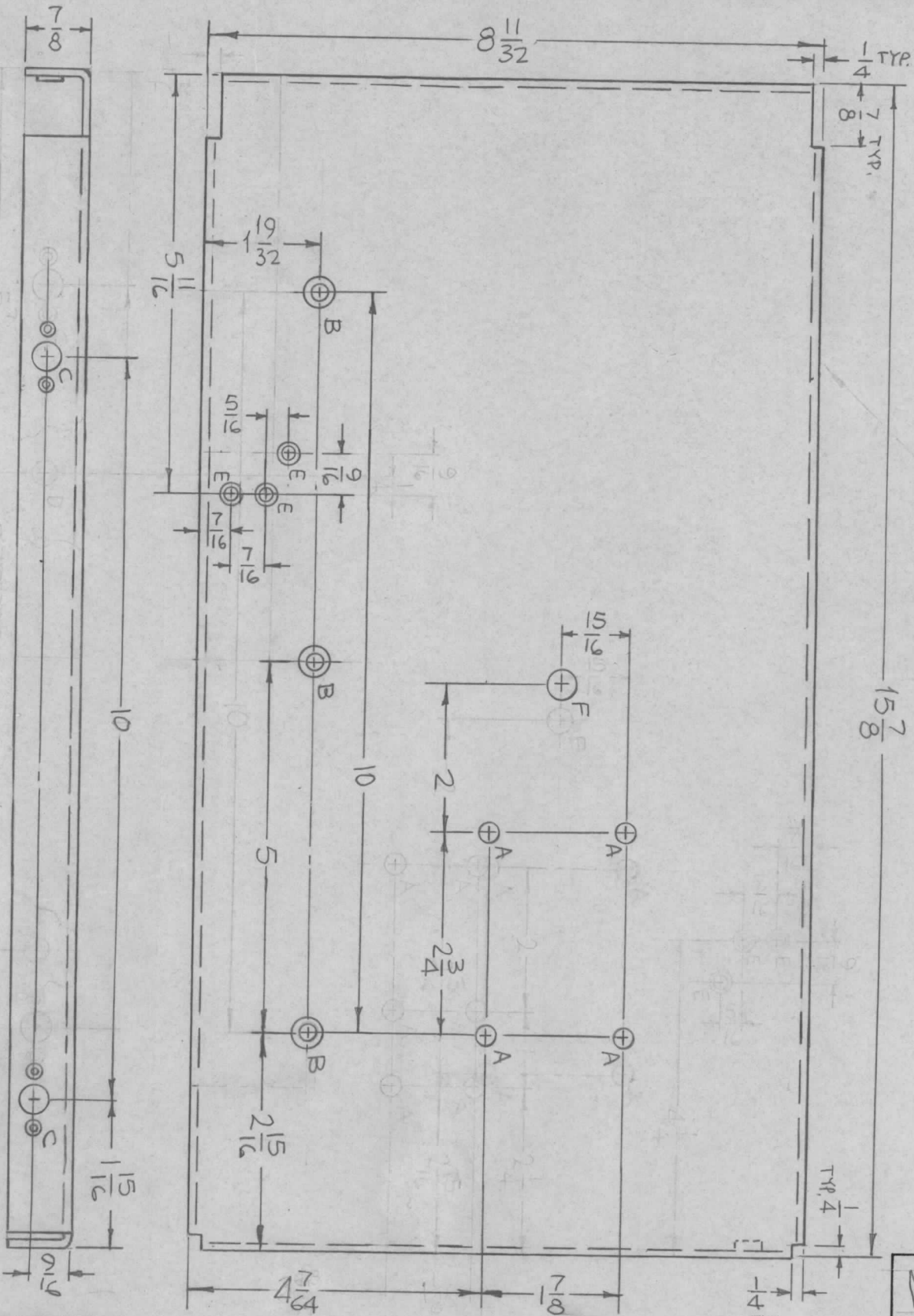
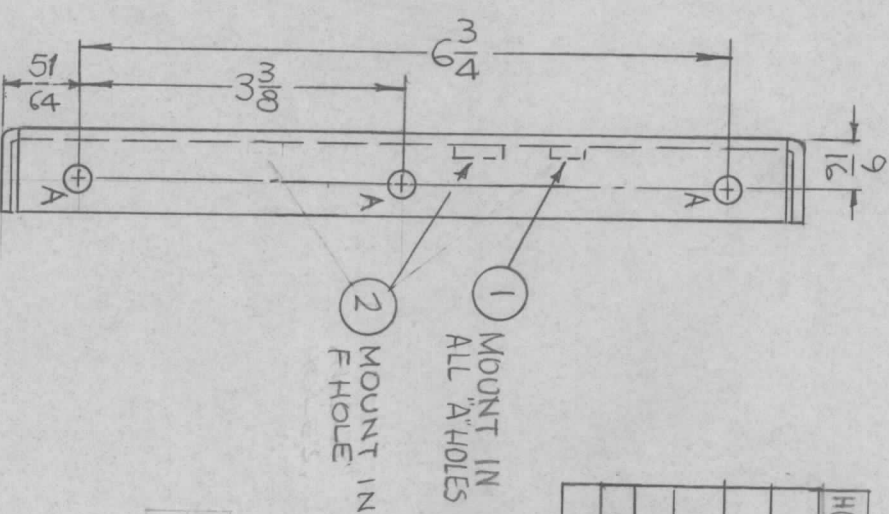
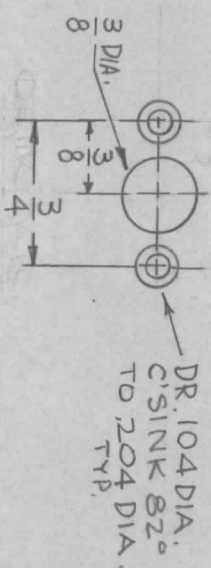
DRAWN	H. AUSTIN	DATE	6-20-66	FINAL APPROVAL	DATE	11/19/66
CHECKED	[Signature]	DATE				
ELECT. DES.	[Signature]	DATE	11-17-66			
MECH. DES.	[Signature]	DATE				
MS4963				SHEET		REV. LTR.



MS4974

REVISIONS				
SYM	DESCRIPTION	DATE	E.M.N. NO.	APPD
X	EXPERIMENTAL RELEASE	6-2-66	X	[Signature]
X1	4 7/16 DIA WAS 3 63/64	6-14-66		[Signature]
X2	MAT'L WAS 2024-T3	11-7-66		[Signature]
Ø	ORIGINAL RELEASE FOR PRODUCTION	11-11-66		[Signature]

HOLE	DESCRIPTION	REQ.
A	.250-.253 DIA.	10
B	DR.19C DIA. C'SINK 82° TO .390	3
C	SEE DETAIL	4
D	5/16 DIA.	1
E	DR.120 DIA. C'SINK 82° TO .230 DIA.	3
F	.413-.416 DIA.	1



REQ'D.	ITEM	PART NUMBER	DESCRIPTION	SYMBOL
1	2	NT129-524-G	NUT, PLAIN, SPLINE	F
10	1	NT129-1032-G	NUT, PLAIN, SPLINE	A

THE TECHNICAL MATERIEL CORP.
MAMARONECK, NEW YORK

PLATE, SIDE, LEFT

MATERIAL
1 THICK ALUMINUM
B 5052-H32

FINISH
S404 YEL. IRIDITE

DRAWN [Signature] DATE 9-1-65

CHECKED [Signature] DATE 11-9-66

ELECT. DES. [Signature] DATE 11-9-66

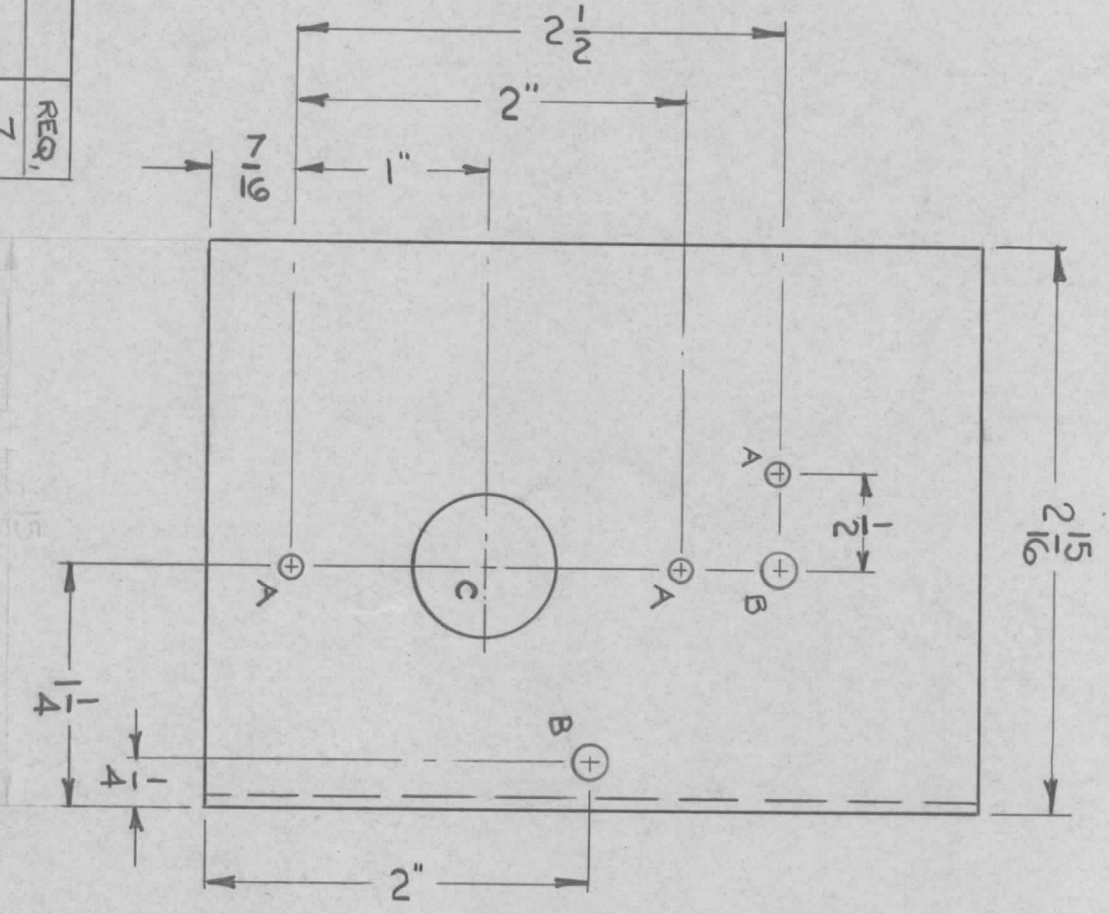
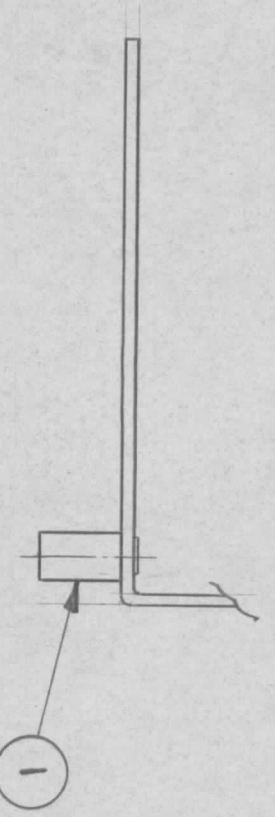
MECH. DES. [Signature] DATE 11-9-66

MS 4974

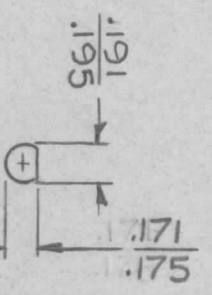
SYM	DESCRIPTION	DATE	E.M.N. NO.	DRAFT	CHKD	APPD
\emptyset	ORIGINAL RELEASE FOR PRODUCTION	8/1/69	\emptyset	W		

MS 4981

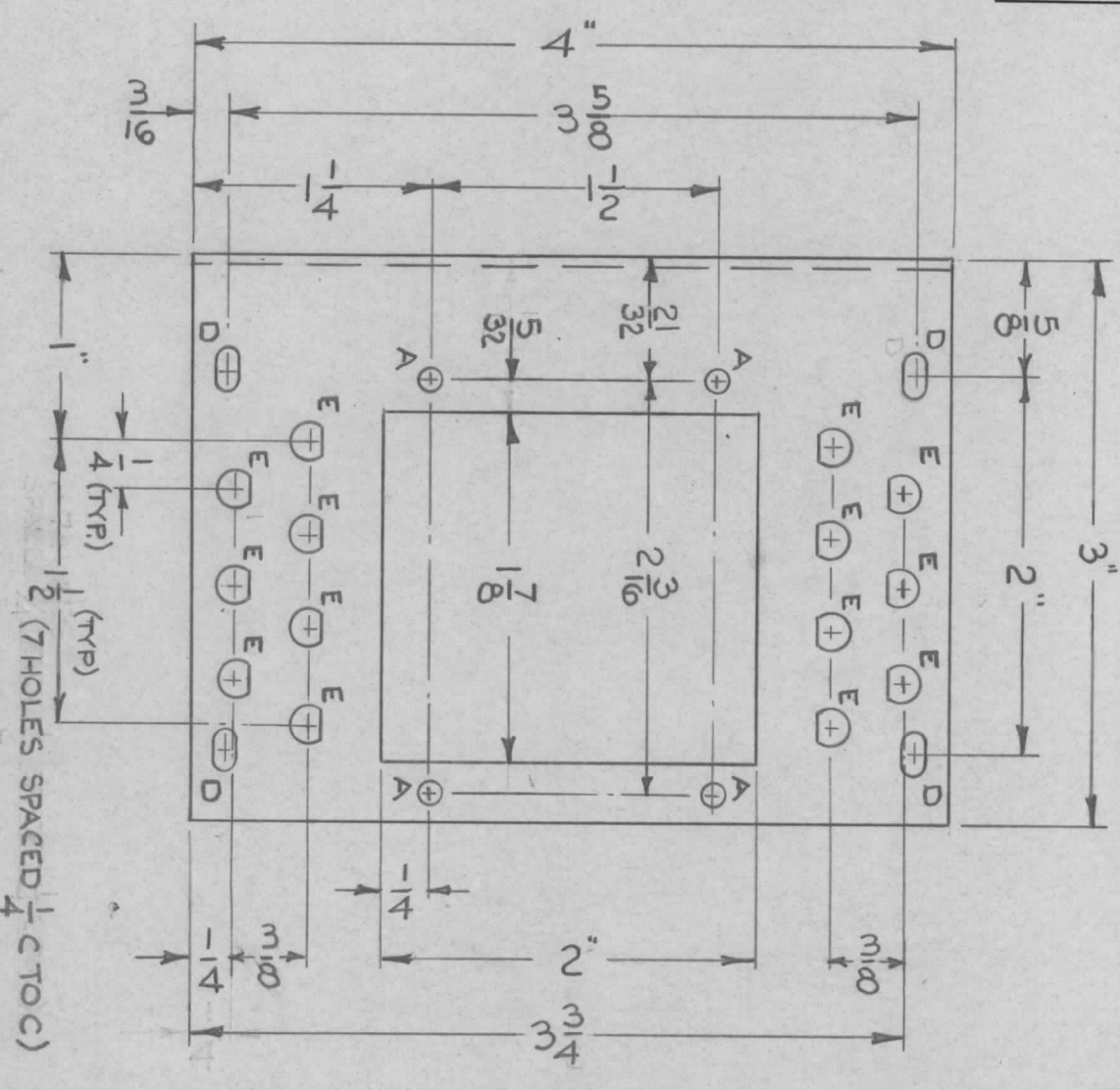
REVISIONS



HOLE	DIAMETER	REQ.
A	1/8	7
B	3/16	2
C	3/4	1
D	1/8 x 1/4 SLOT	1
E	SEE DETAIL	14



DETAIL E



LIST OF MATERIAL

REQ'D.	ITEM	TE	PART NUMBER	DESCRIPTION	SYMBOL
1	1	TE			

MATERIAL
 .064 THK. ALUM
 5052-H32

FINISH
 S 404
 YELLOW IRIDITE

TITLE
 INNER SHELL, BOTTOM
 XTAL OVEN

THE TECHNICAL MATERIEL CORP.
 MAMARONECK, NEW YORK

DRAWN	DATE	FINAL APPROVAL	DATE
CHECKED	6-27-66		8/1/69
ELECT. DES.			
MECH. DES.			

UNLESS OTHERWISE SPECIFIED
 DIMENSIONS ARE IN INCHES AND INCLUDE
 CHEMICALLY APPLIED OR PLATED FINISHES

DECIMALS
 .X ± .05
 .XX ± .01
 .XXX ± .005

FRACTIONS
 ± 1/64
 ANGLES
 ± 0° 30'

TOLERANCES

NOTES

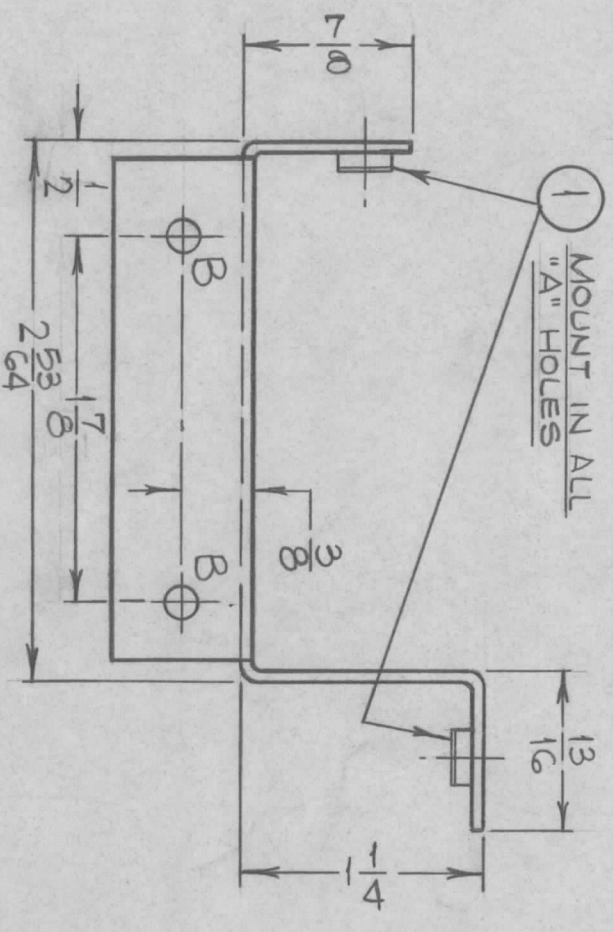
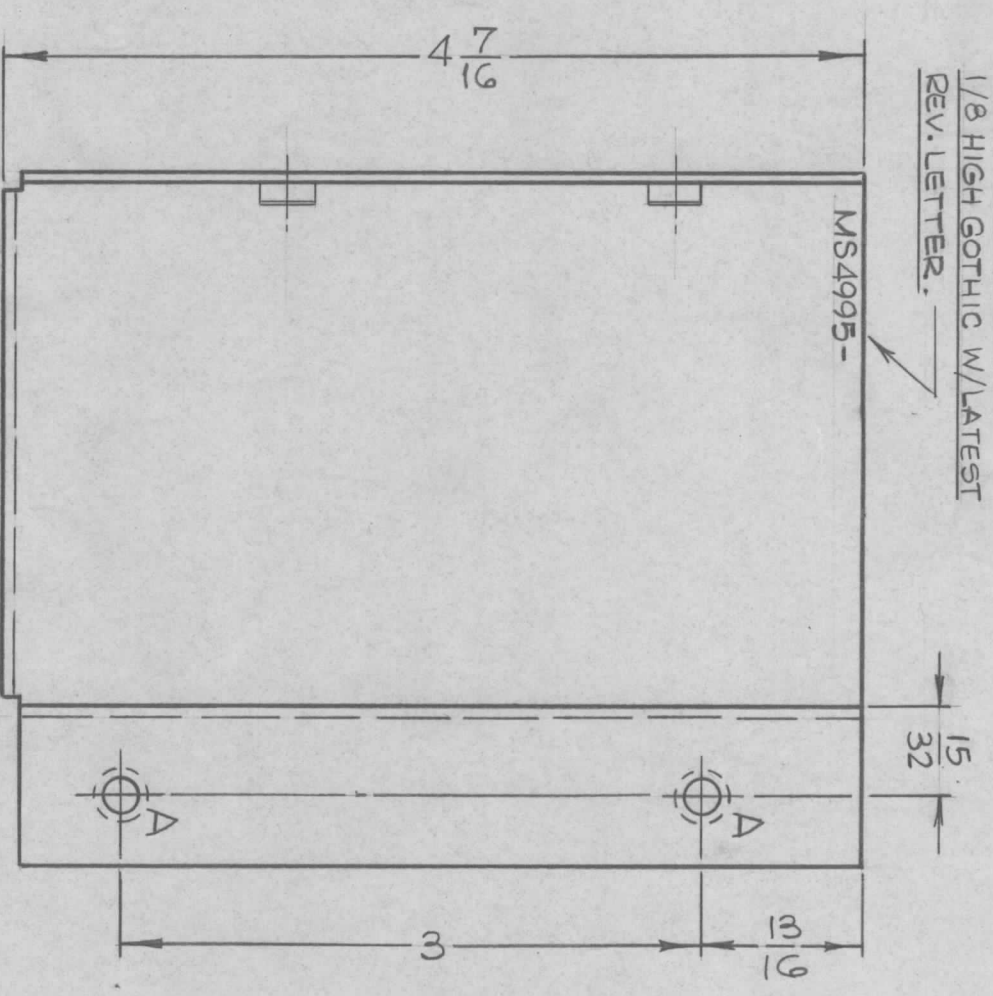
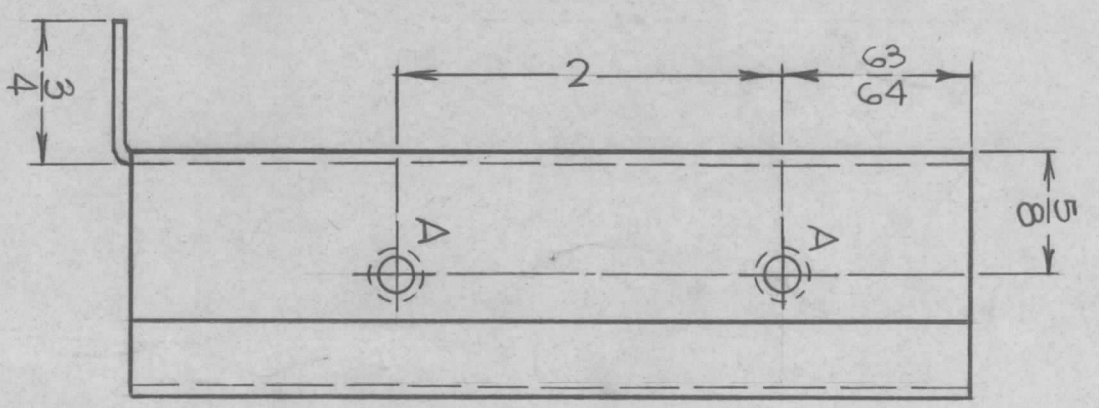
Q'TY./UNIT	1	MODEL USED ON	SBE 8,9,10	ASSY. NO.	AX 621
SCALE		CODE			

THE CONTENTS OF THIS DRAWING ARE THE EXCLUSIVE PROPERTY
 OF THE TECHNICAL MATERIEL CORP. ITS UNAUTHORIZED USE OR
 REPRODUCTION IN WHOLE OR IN PART IS STRICTLY FORBIDDEN.

MS 4981

REV. LTR.

MARK TMC PART NO.
1/8 HIGH GOTHIC W/LATEST
REV. LETTER.



MS4995

SYM	DESCRIPTION	DATE	E.M.N. NO.	DRAFT	CHKD	APPD
X	EXPERIMENTAL RELEASE	6-21-66	X	HCA	[Signature]	[Signature]
Ø	ORIGINAL RELEASE FOR PRODUCTION	11-18-66	Ø	RME	[Signature]	[Signature]

HOLE	DESCRIPTION	REQ'D
A	.191-.194 DIA.	4
B	11/64 DIA.	2

UNLESS OTHERWISE SPECIFIED:

1. USE MATERIAL THICKNESS FOR MAXIMUM RADIUS ON ALL BENDS
2. ALL ANGULAR BENDS 90 DEGREES
3. REMOVE ALL BURRS AND SHARP EDGES
4. MOUNT INSERTS AFTER FINISHING

REQ'D.	ITEM	PART NUMBER	DESCRIPTION	SYMBOL
4	1	NT129-G32-4	NUT, PLAIN, SPLINE	A

MATERIAL	TITLE
BUDETTI ALUMINUM .064 THICK 5052-H32	THE TECHNICAL MATERIEL CORP. MAMARONECK, NEW YORK
FINISH S404 YELLOW IRIDIOTE	SHIELD, RF CABLE

QTY./UNIT	TLAA-2.5K	ASSY. NO.	AS497
SCALE	1:1	MODEL USED ON	

NOTES

THE CONTENTS OF THIS DRAWING ARE THE EXCLUSIVE PROPERTY OF THE TECHNICAL MATERIEL CORP. ITS UNAUTHORIZED USE OR REPRODUCTION IN WHOLE OR IN PART IS STRICTLY FORBIDDEN.

