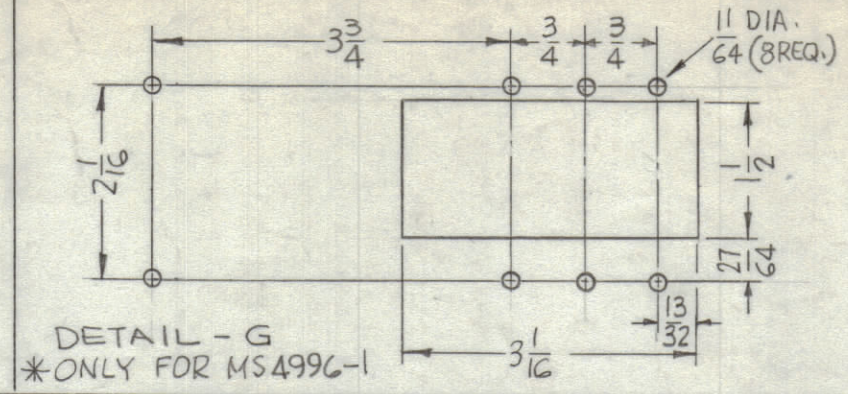
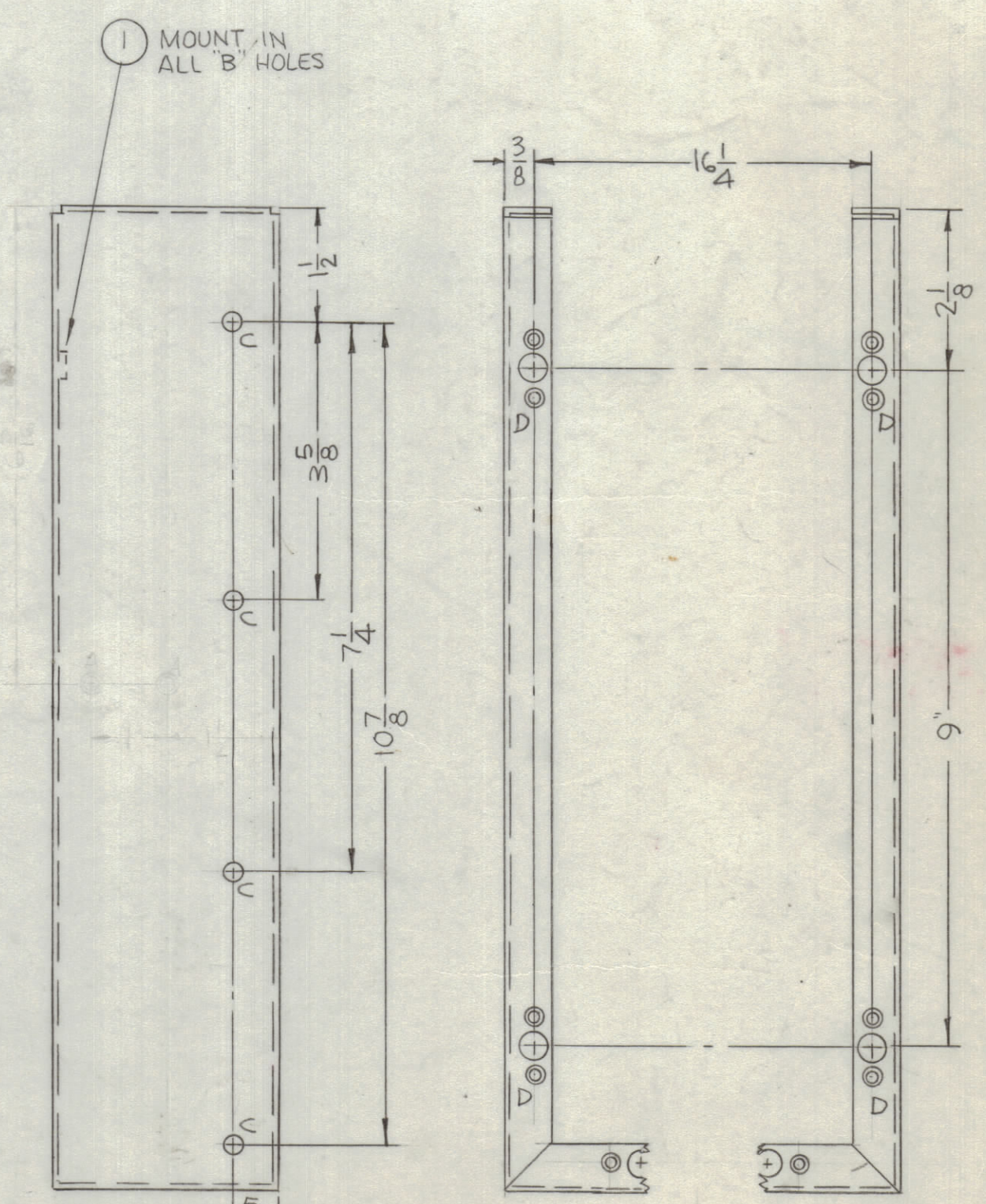
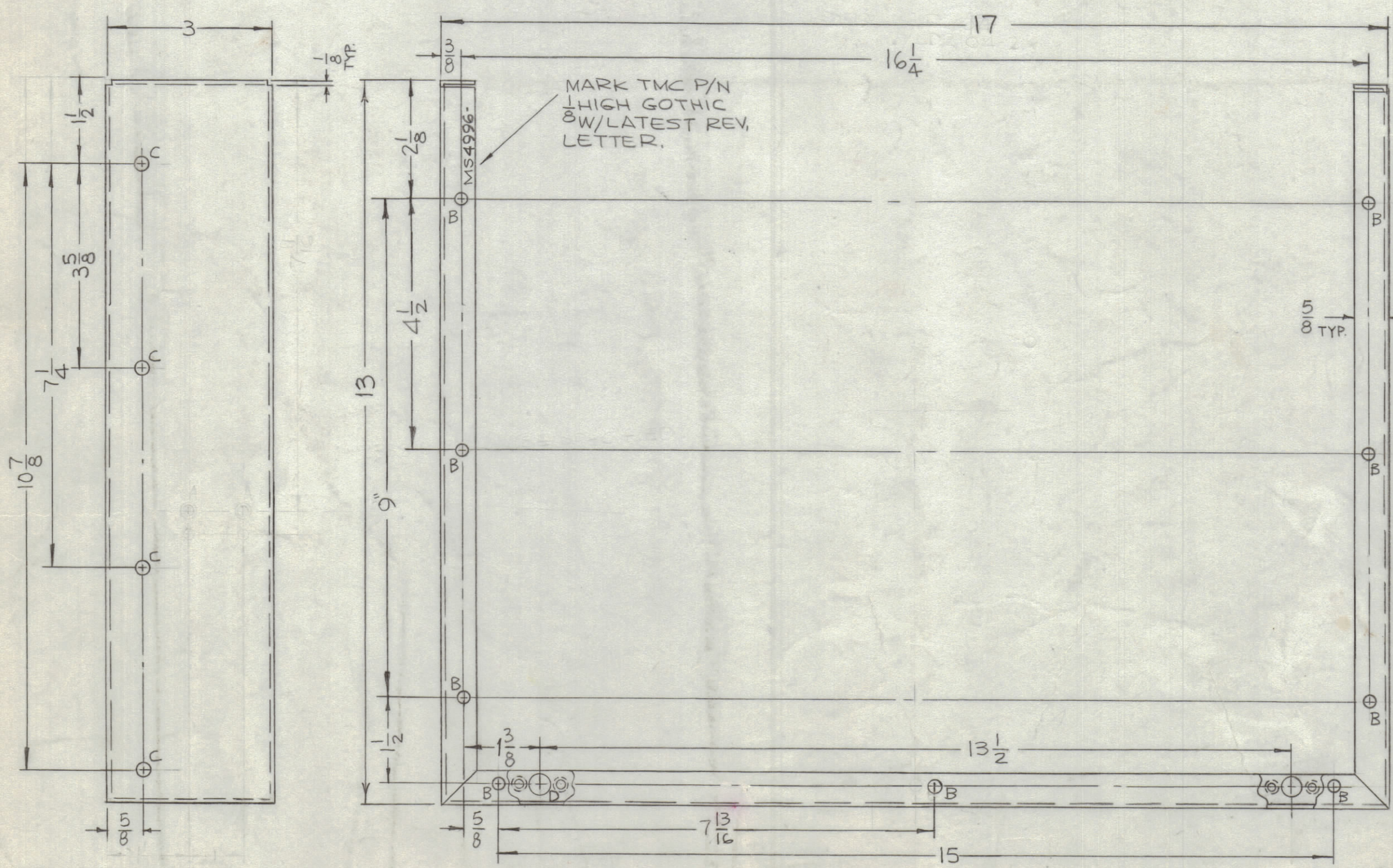
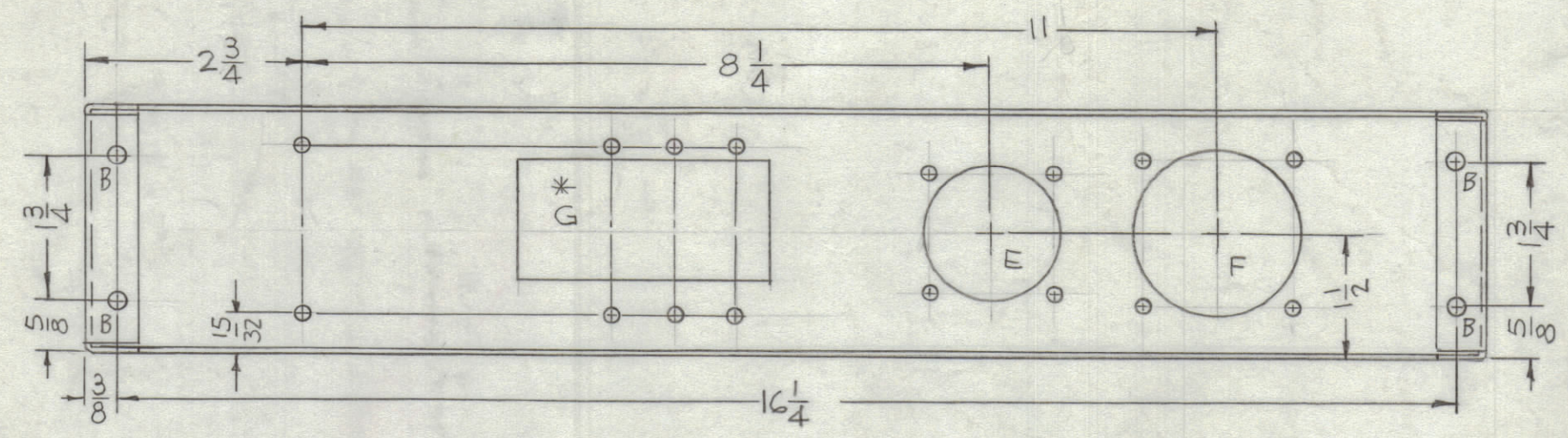


| DETAIL | X     | Y     |
|--------|-------|-------|
| E      | 1-3/8 | 1-5/8 |
| F      | 1-3/4 | 2-1/8 |



| REVISIONS |     |                                 |          |            |       |      |      |
|-----------|-----|---------------------------------|----------|------------|-------|------|------|
| ZONE      | SYM | DESCRIPTION                     | DATE     | E.M.N. NO. | DRAFT | CHKD | APPD |
| X         |     | EXPERIMENTAL RELEASE            | 6-16-66  | X          |       |      |      |
|           |     | ORIGINAL RELEASE FOR PRODUCTION | 12-28-66 |            | WAD   |      |      |



| HOLES | DESCRIPTION    | REQ. |
|-------|----------------|------|
| A     |                | 4    |
| B     | .221-.224 DIA. | 13   |
| C     | 15/64 DIA.     | 8    |
| D     | SEE DETAIL     | 6    |
| E     | SEE DETAIL     | 1    |
| F     | SEE DETAIL     | 1    |
| G     | SEE DETAIL     | 1    |

- UNLESS OTHERWISE SPECIFIED:
1. USE MATERIAL THICKNESS FOR MAXIMUM RADIUS ON ALL BENDS
  2. ALL ANGULAR BENDS 90 DEGREES
  3. REMOVE ALL BURRS AND SHARP EDGES
  4. MOUNT INSERTS AFTER FINISHING

| TMC PART NO. | DESCRIPTION      |
|--------------|------------------|
| MS4996-1     | AS SHOWN         |
| MS4996-2     | EXCLUDE DETAIL-G |

| QTY./UNIT | MODEL USED ON | ASS'Y. NO. |
|-----------|---------------|------------|
| 1         | TCP-3         | BMA 134    |
| 1         | TCP-2         | AS254      |
| 1         | TCP-1         | BMA 134    |

SCALE 1/2 CODE A

THE CONTENTS OF THIS DRAWING ARE THE EXCLUSIVE PROPERTY OF THE TECHNICAL MATERIEL CORP. ITS UNAUTHORIZED USE OR REPRODUCTION IN WHOLE OR IN PART IS STRICTLY FORBIDDEN.

LD2104-1/MS4996-2  
REF. LD2104-2/MS4996-1

| REQ'D. | ITEM | PART NUMBER  | DESCRIPTION        | SYMBOL |
|--------|------|--------------|--------------------|--------|
| 9      | 1    | NT 129-832-4 | NUT, PLAIN, SPLINE | B      |

F. BUDETTI LIST OF MATERIAL

| MATERIAL                     | TITLE                  |
|------------------------------|------------------------|
| .064 THICK ALUMINUM 5052-H32 | CHASSIS, CONTROL PANEL |

THE TECHNICAL MATERIEL CORP. MAMARONECK, NEW YORK

| FINISH            | DATE    | FINAL APPROVAL | DATE     |
|-------------------|---------|----------------|----------|
| S404 YEL. IRIDITE | 4-29-66 |                | 12/29/66 |

| DECIMALS    | FRACTIONS | TOLERANCES | ANGLES   |
|-------------|-----------|------------|----------|
| .X ± .05    | ± 1/64    |            | ± 0° 30' |
| .XX ± .01   |           |            |          |
| .XXX ± .005 |           |            |          |

UNLESS OTHERWISE SPECIFIED DIMENSIONS ARE IN INCHES AND INCLUDE CHEMICALLY APPLIED OR PLATED FINISHES

DRAWN: [Signature] DATE: 4-29-66  
CHECKED: [Signature] DATE: [Signature]  
ELECT. DES. [Signature] DATE: MS4996  
MECH. DES. [Signature] DATE: [Signature]  
SHEET: [Signature] REV. LTR. [Signature]

MS4996