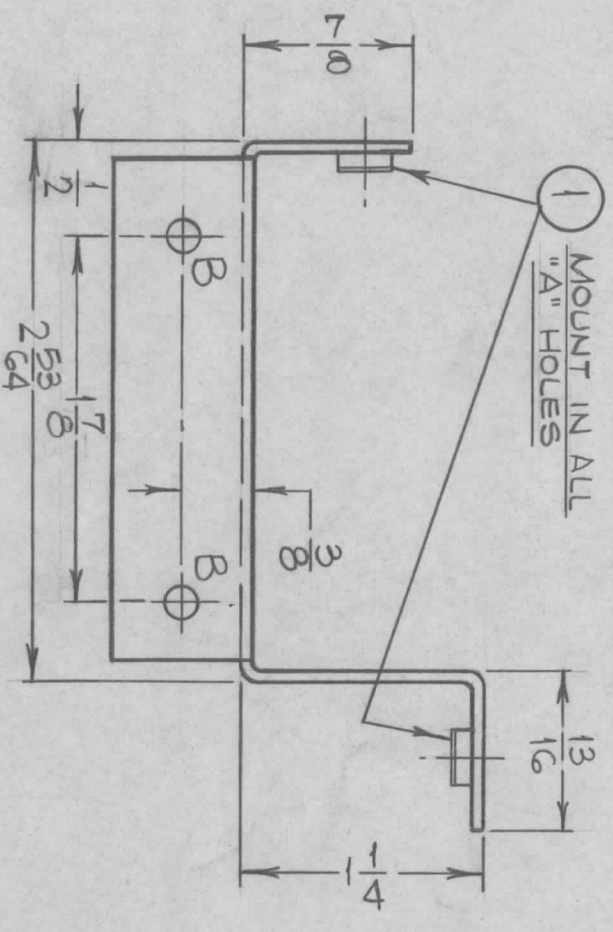
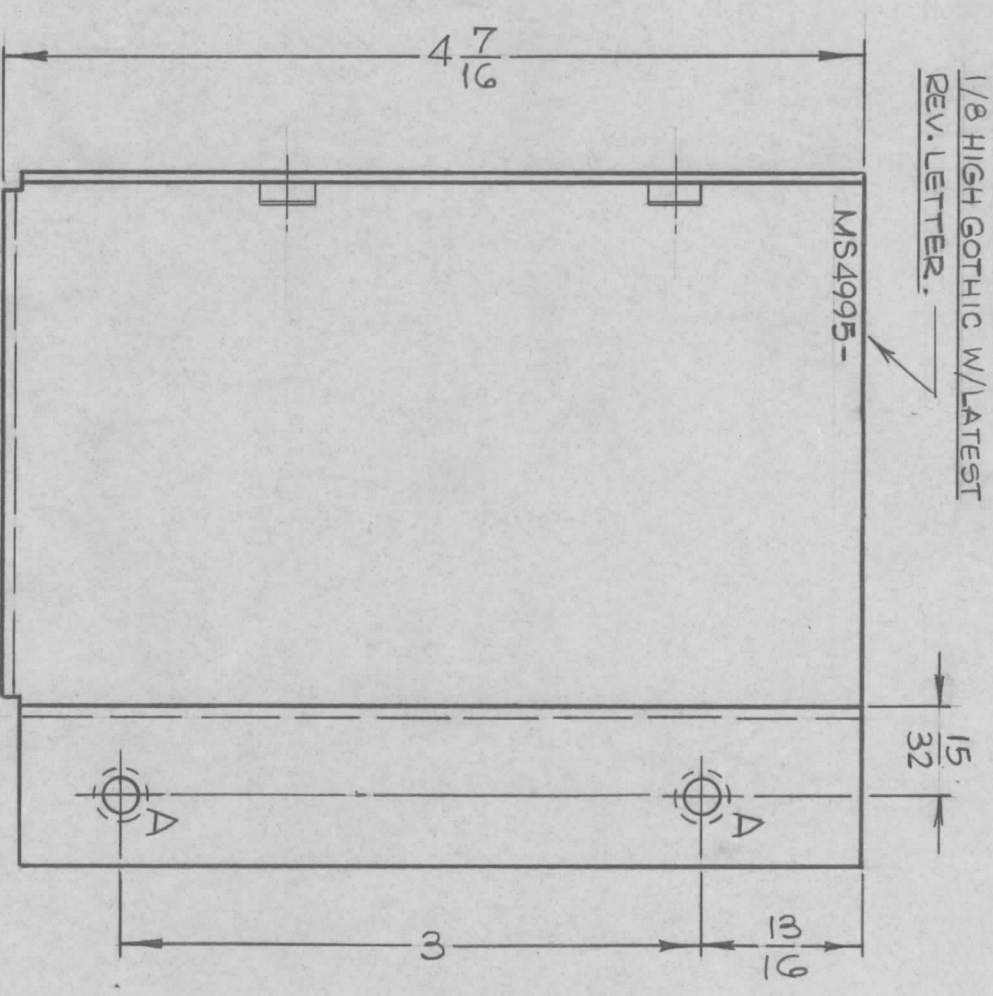
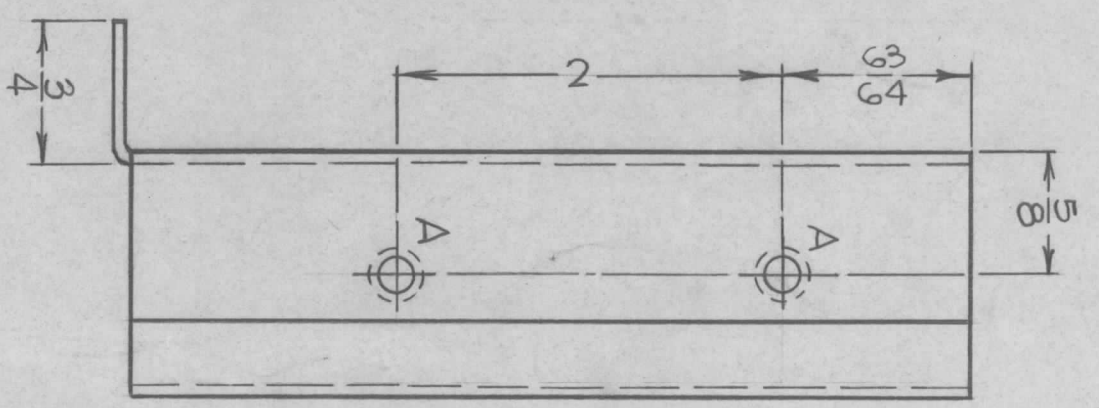


MARK TMC PART NO.
1/8 HIGH GOTHIC W/LATEST
REV. LETTER.



MS4995

SYM	DESCRIPTION	DATE	E.M.N. NO.	DRAFT	CHKD	APPD
X	EXPERIMENTAL RELEASE	6-21-66	X	HCA	gpa	gpa
Ø	ORIGINAL RELEASE FOR PRODUCTION	11-18-66	Ø	RME		

HOLE	DESCRIPTION	REQ'D
A	.191 - .194 DIA.	4
B	11/64 DIA.	2

UNLESS OTHERWISE SPECIFIED:

1. USE MATERIAL THICKNESS FOR MAXIMUM RADIUS ON ALL BENDS
2. ALL ANGULAR BENDS 90 DEGREES
3. REMOVE ALL BURRS AND SHARP EDGES
4. MOUNT INSERTS AFTER FINISHING

REQ'D.	ITEM	PART NUMBER	DESCRIPTION	SYMBOL
4	1	NT129-G32-4	NUT, PLAIN, SPLINE	A

MATERIAL	TITLE
BUDETTI ALUMINUM .064 THICK 5052-H32	THE TECHNICAL MATERIEL CORP. MAMARONECK, NEW YORK
FINISH S404 YELLOW IRIDITE	SHIELD, RF CABLE

QTY./UNIT	TLAA-2.5K	ASSY. NO.	AS497
SCALE	1:1	MODEL USED ON	

DECIMALS	TOLERANCES	FRACTIONS	ANGLES
.X ± .05		± 1/64	
.XX ± .01		± .01	
.XXX ± .005		± 0° 30'	

NOTES