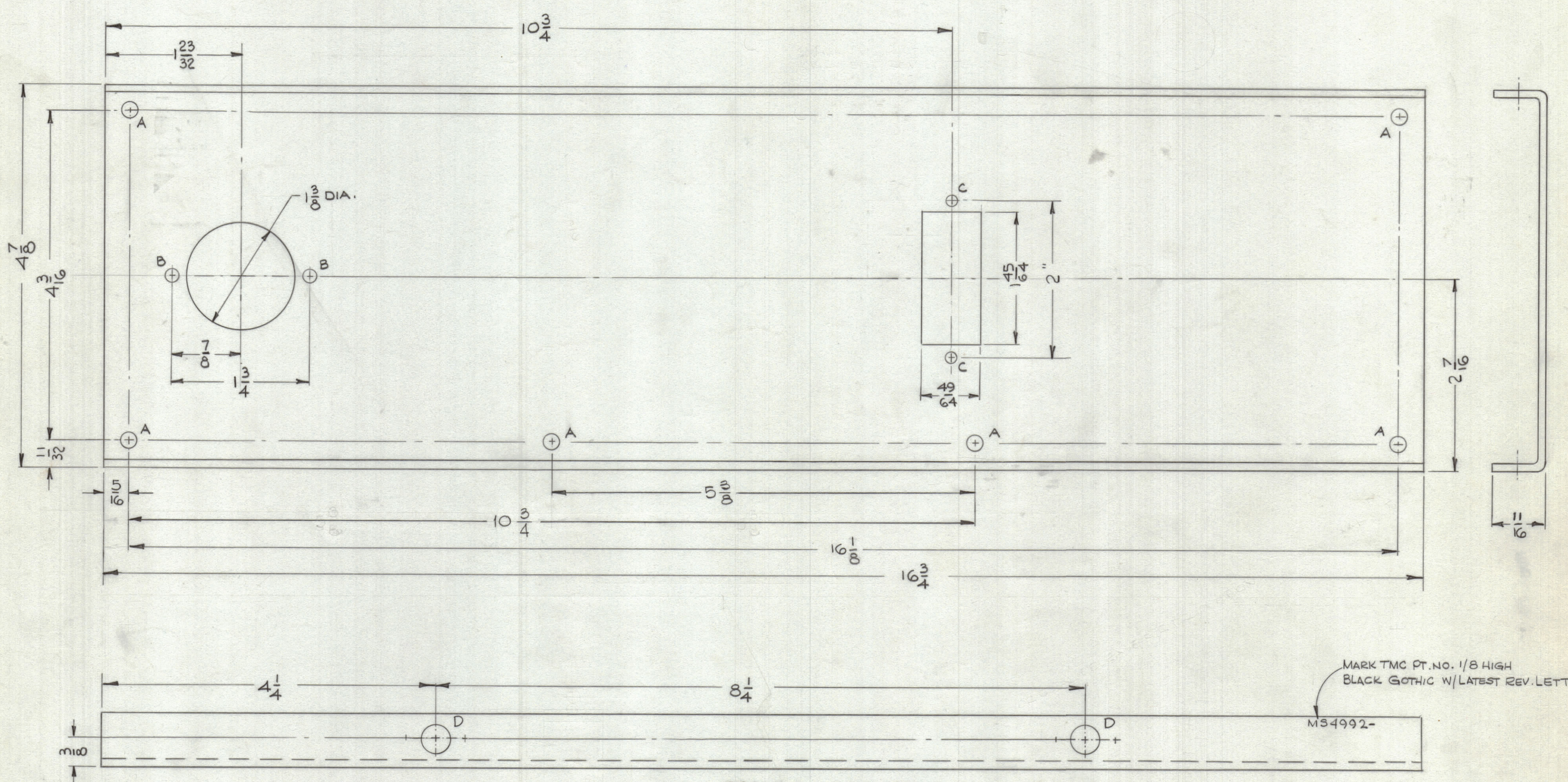


REVISIONS							
ZONE	SYM	DESCRIPTION	DATE	E.M.N. NO.	DRAFT	CHKD	APPD
X		EXPERIMENTAL RELEASE	6-10-66		JB		
Ø		ORIGINAL RELEASE FOR PRODUCTION	9/9/66	44	Jc		Jc



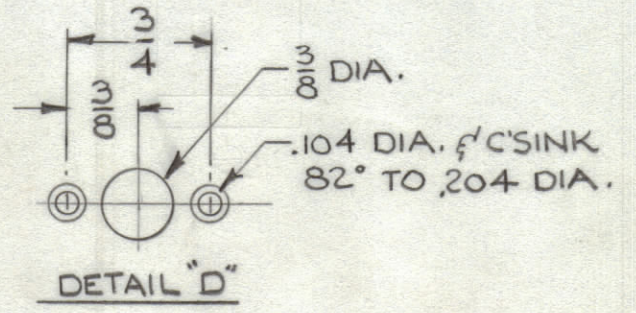
MS4992-Ø

MARK TMC PT. NO. 1/8 HIGH
BLACK GOTHIC W/LATEST REV. LETTER

MS4992-

OPPOSITE SIDE IDENTICAL

HOLE	DIAMETER	REQ.
A	13/64	6
B	11/64	2
C	9/64	2
D	SEE DETAIL	4



- UNLESS OTHERWISE SPECIFIED:
1. USE MATERIAL THICKNESS FOR MAXIMUM RADIUS ON ALL BENDS
 2. ALL ANGULAR BENDS 90 DEGREES
 3. REMOVE ALL BURRS AND SHARP EDGES

NOTES

Q'TY./UNIT	MODEL USED ON	ASS'Y. NO.
SCALE 1:1	LRCA-1	

REF: LD211G

REQ'D.	ITEM	PART NUMBER	DESCRIPTION	SYMBOL
	EATON		LIST OF MATERIAL SK. 8232-4	
	MATERIAL	5052-H32 .081 THK. ALUMINUM	THE TECHNICAL MATERIEL CORP. MAMARONECK, NEW YORK	
	FINISH	S404 YELLOW IRIDITE	TITLE PLATE, REAR	
	UNLESS OTHERWISE SPECIFIED DIMENSIONS ARE IN INCHES AND INCLUDE CHEMICALLY APPLIED OR PLATED FINISHES		DRAWN JB	DATE 6-10-66
	DECIMALS X ± .05 .XX ± .01 .XXX ± .005	TOLERANCES ± 1/64 ANGLES ± 0° 30'	CHECKED JCB	DATE 9/9/66
	THE CONTENTS OF THIS DRAWING ARE THE EXCLUSIVE PROPERTY OF THE TECHNICAL MATERIEL CORP. ITS UNAUTHORIZED USE OR REPRODUCTION IN WHOLE OR IN PART IS STRICTLY FORBIDDEN.		ELECT. DES. JCB	DATE MS 4992
			MECH. DES. JCB	DATE 9/9/66
			SHEET	REV. LTR. Ø