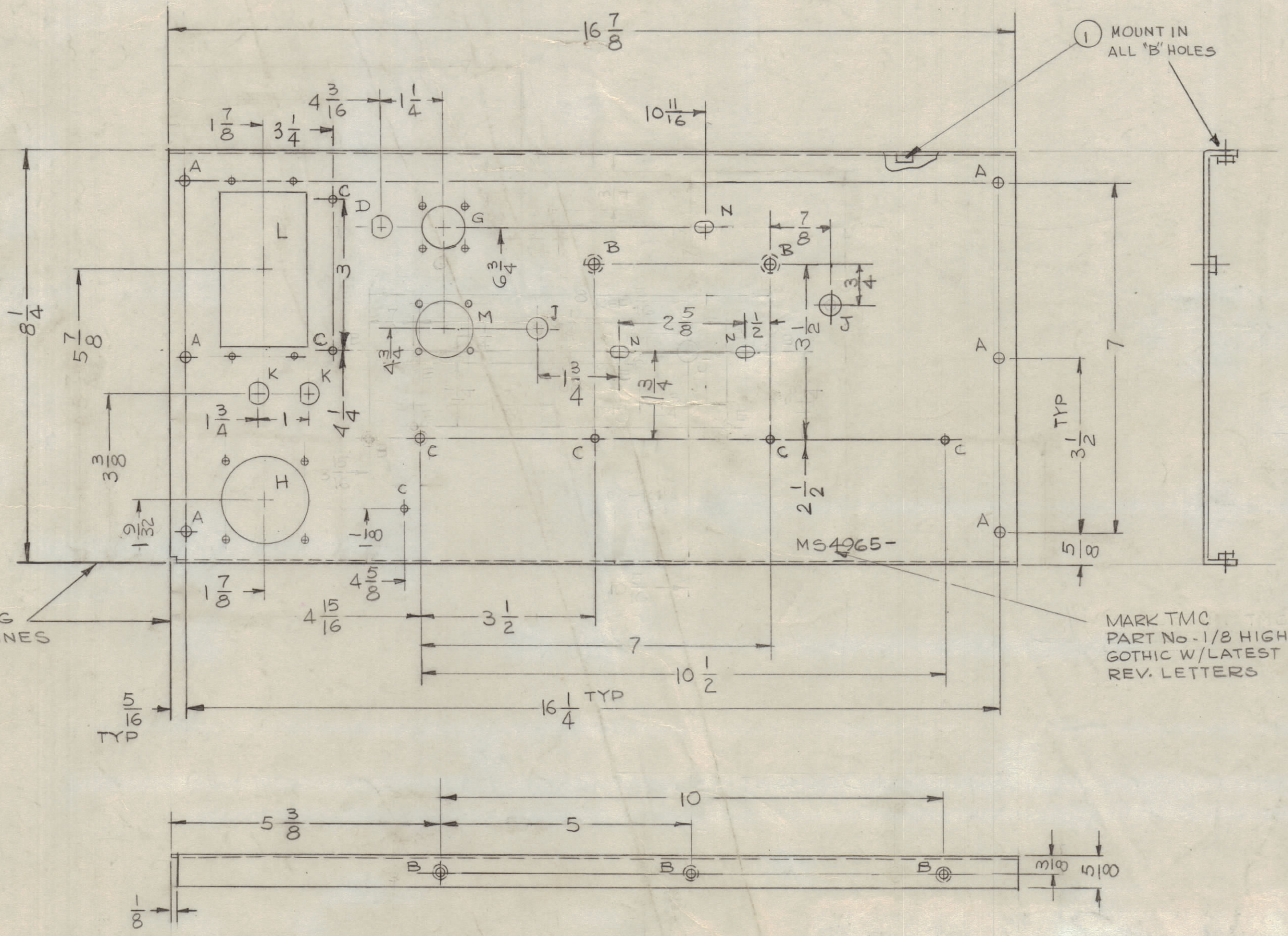
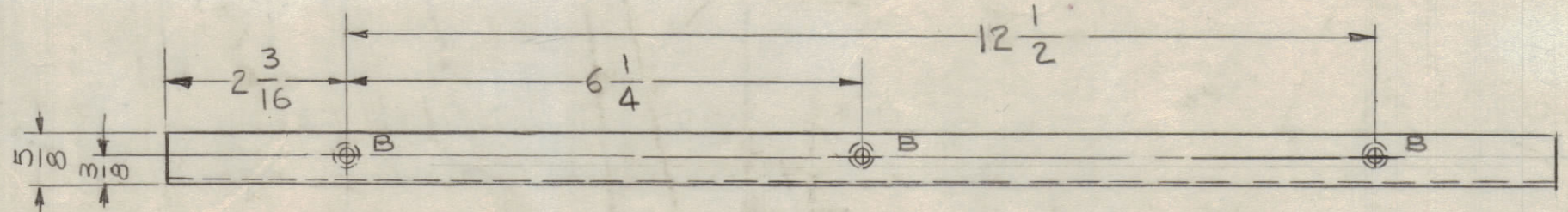
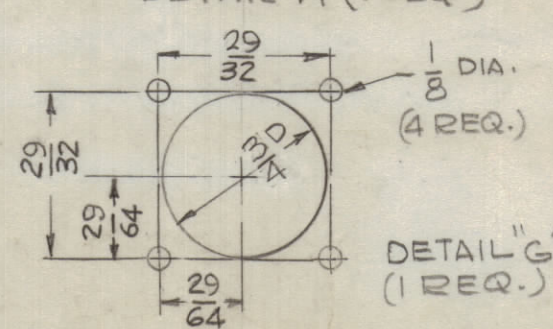
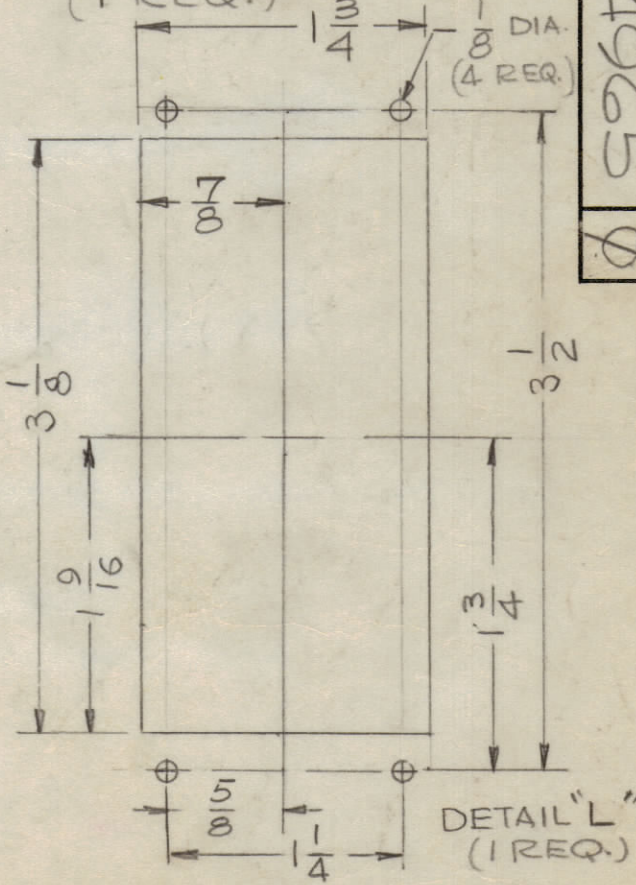
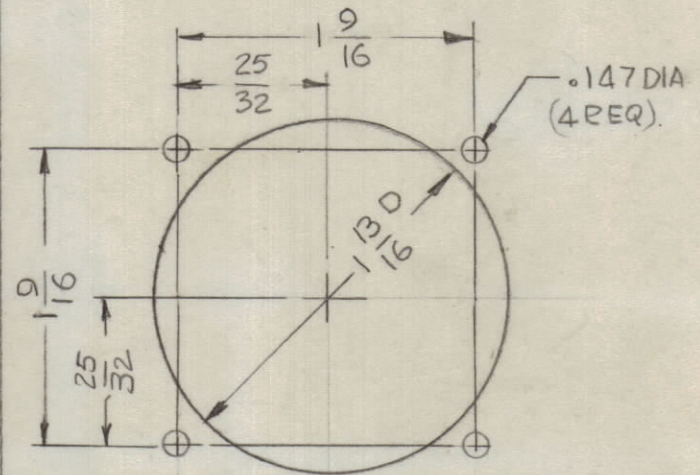
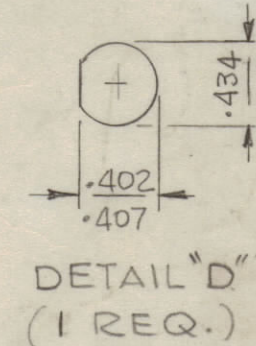
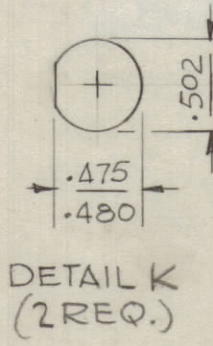


REVISIONS						
ZONE	SYM	DESCRIPTION	DATE	E.M.N. NO.	DRAFT	CHKD
	X	EXPERIMENTAL RELEASE	6-1-66	X	HLA	
	X1	(1) "B" HOLE WAS "C" HOLE - REG. CHGD. ACCORDINGLY	6-15-66	X1	HLA	WLD
	X2	G-DETAIL REVISED	8-1-66	X2	HLA	WLD
	X3	COMPLETELY REVISED	8-6-66	X3	HLA	WLD
A5-	X4	ONE "A" HOLE DELETED - J HOLE WAS 7/16". ONE "J" HOLE ADDED	8-13-66	X4	GDL	WLD
	X5	ON G-DETAIL 29/32 WAS 23/32, 3/4 WAS 21/32	10-19-66	X5	HLA	WLD
	Ø	ORIGINAL RELEASE FOR PRODUCTION	11-11-66		WLD	HLA



HOLE	DESCRIPTION	REQ.
A	13/64 DIA.	6
B	.191 - .194 DIA.	8
C	11/64 DIA.	7
D	SEE DETAIL	1
E	.144 DIA. C'SK 82° TO .284 (ON REAR)	4
F	DELETED	-
G	SEE DETAIL	1
H	SEE DETAIL	1
J	17/32 DIA.	2
K	SEE DETAIL	2
L	SEE DETAIL	1
M	SEE DETAIL	1
N	1/4 DIA x 3/8 SLOT	3

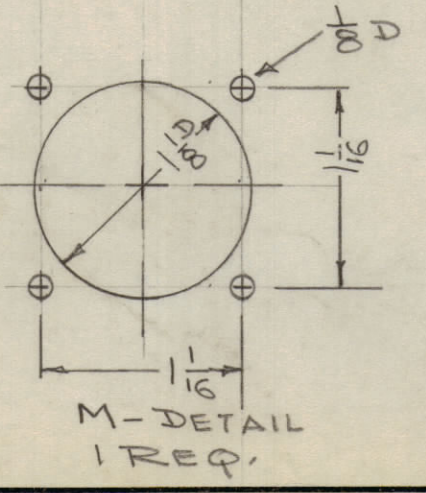


LOCATING BASELINES

MARK TMC PART No - 1/8 HIGH GOTHIC W/LATEST REV. LETTERS

UNLESS OTHERWISE SPECIFIED:

1. USE MATERIAL THICKNESS FOR MAXIMUM RADIUS ON ALL BENDS
2. ALL ANGULAR BENDS 90 DEGREES
3. REMOVE ALL BURRS AND SHARP EDGES
4. MOUNT INSERTS AFTER FINISHING



8	1	NT129-632-4	NUT, PLAIN SPLINE	B
REQ'D.	ITEM	PART NUMBER	DESCRIPTION	SYMBOL
BUDETTI LIST OF MATERIAL				
MATERIAL		THE TECHNICAL MATERIEL CORP.		
.081 THK ALUMINUM 5052 -H32		MAMARONECK, NEW YORK		
FINISH		TITLE		
S404 YEL. IRIDITE		PLATE, REAR CHASSIS		
UNLESS OTHERWISE SPECIFIED DIMENSIONS ARE IN INCHES AND INCLUDE CHEMICALLY APPLIED OR PLATED FINISHES		DRAWN	DATE	FINAL APPROVAL
		G.D.L.	5-7-66	[Signature]
		CHECKED	DATE	
		[Signature]	11-9-66	
		ELECT. DES.	DATE	
		[Signature]	11-9-66	
		MECH. DES.	DATE	
		[Signature]	11-9-66	
		SHEET		REV. LTR.
		2 M/L [Signature]		Ø

1	TLAA-25K	A5497
QTY./UNIT	MODEL USED ON	ASS'Y. NO.
SCALE	CODE	
THE CONTENTS OF THIS DRAWING ARE THE EXCLUSIVE PROPERTY OF THE TECHNICAL MATERIEL CORP. ITS UNAUTHORIZED USE OR REPRODUCTION IN WHOLE OR IN PART IS STRICTLY FORBIDDEN.		

NOTES

REF: LD2137