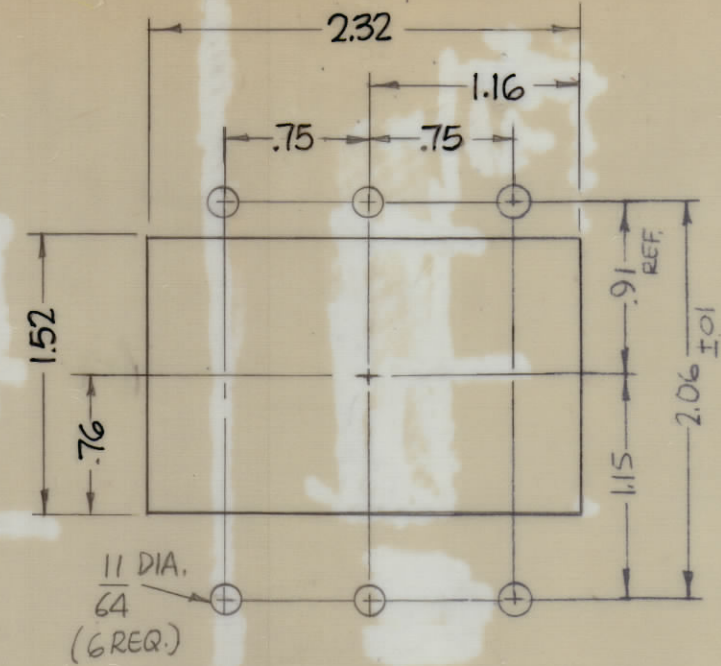
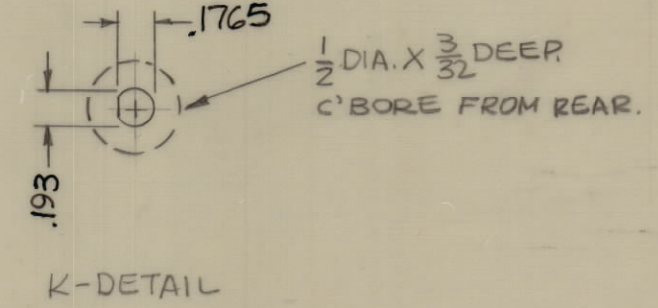


F-DETAIL

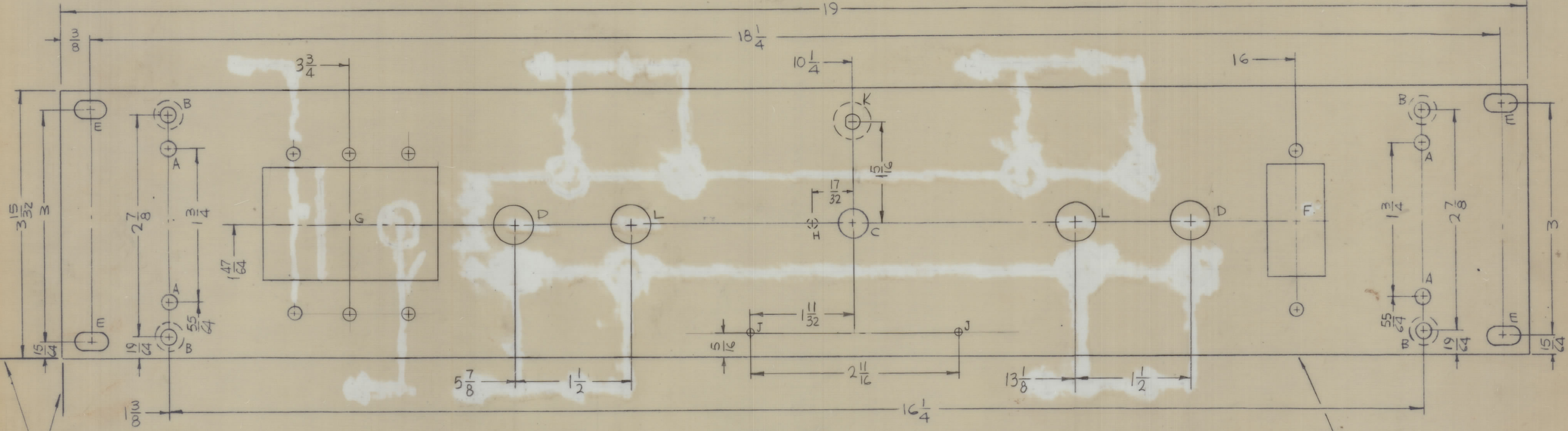


G-DETAIL



K-DETAIL

REVISIONS						
ZONE	SYM	DESCRIPTION	DATE	E.M.N. NO.	DRAFT	CHKD
	X	EXPERIMENTAL RELEASE	5-25-66	X		
	X1	COMPLETELY REVISED	6-15-66	X1		
	X2	2 J HOLES ADDED	6-23-66	X2		
	X3	K HOLE ADDED	6-28-66	X3		
	X4	C'BORE ADDED TO K DETAIL, F&G DETAIL REVISED	9-8-66	X4		
	X5	L HOLES WERE D HOLES	9-15-66	X5		
	Ø	ORIGINAL RELEASE FOR PRODUCTION	11/30/66	Ø		



FRONT VIEW

HOLES	DESCRIPTION	REQ
A	13/64 DIA	4
B	DR. 19/64 DIA C'SINK B2° TO .390 D	4
C	3/8 DIA	1
D	15/32 DIA	2
E	1/4 X 29/64 SLOT	4
F	SEE DETAIL	1
G	SEE DETAIL	1
H	1/8 DIA X 1/16 DP FROM REAR	1
J	.078 DIA.	2
K	SEE DETAIL	1
L	1/2 DIA.	2

- MACHINING:**
- MILL ALL EDGES.
  - HOLES MUST BE DRILLED, UNLESS OTHERWISE SPECIFIED.
  - LATERAL BOW OF PANEL MUST BE KEPT TO .031 TOLERANCE.
  - PANEL MUST BE FREE OF ALL MACHINING MARKS, GOUGES AND SCRATCHES. IF NECESSARY, SAND FRONT OF PANEL WITH NO. 120 GRIT SANDPAPER.

- FINISH NOTES:**
- S404 - IRIDITE 14-2 AL-COAT
  - S114 - ZINC CHROMATE PRIMER FRONT AND EDGES ONLY
  - S115 - SMOOTH GRAY ENAMEL OR PRIME AND PAINT PER CUSTOMER'S SPECIFICATIONS.

**NOTES**

1	TCP-1	BMA 162
QTY/UNIT	MODEL USED ON	ASSY. NO.
1:1	A	

THE CONTENTS OF THIS DRAWING ARE THE EXCLUSIVE PROPERTY OF THE TECHNICAL MATERIEL CORP. ITS UNAUTHORIZED USE OR REPRODUCTION IN WHOLE OR IN PART IS STRICTLY FORBIDDEN.

REQ'D.		ITEM	PART NUMBER	DESCRIPTION	SYMBOL
F. BUDETTI		LIST OF MATERIAL			
MATERIAL		3/16 THICK ALUMINUM 2024-T3			
FINISH		SEE NOTES			
THE TECHNICAL MATERIEL CORP.		MAMARONECK, NEW YORK			
TITLE		PANEL, FRONT			
DRAWN	DATE	FINAL APPROVAL	DATE		
MECH. DES.	DATE	M54938			
SHEET		1		REV. LTR.	

MS4938

MARK TMC P/N MS4938-1/8 HIGH GOTHIC W/LATEST REV. LETTER (ON REAR)