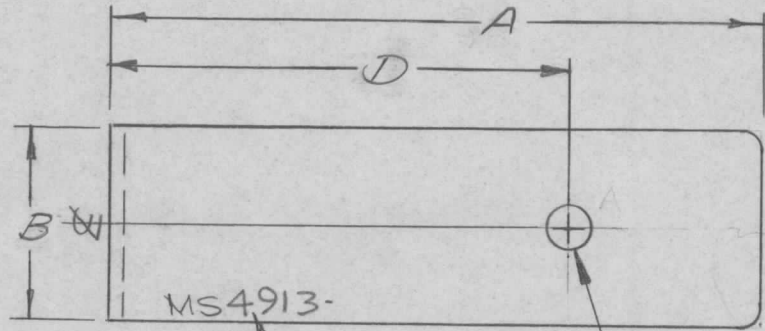
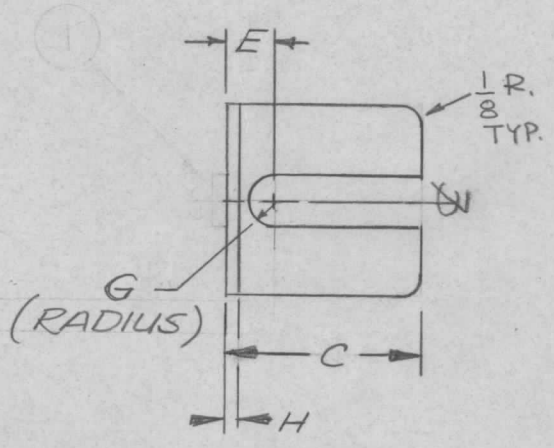


TMC P/N	A	B	C	D	E	F	G	H	MATL.	FINISH	REQ. PER UNIT	USED ON			MS4913	A
MS 4913	3 3/8	1	1	2 3/8	1/4	13/64	1/8	.081	5052-H32 ALUM	S404 YEL IRIDITE		MODEL	ASS'Y. NO.	DATE		



MARK TMC P/N
1/8 HIGH GOTHIC
W/LATEST REV.
LETTER.

F DIA.



UNLESS OTHERWISE SPECIFIED:

1. USE MATERIAL THICKNESS FOR MAXIMUM RADIUS ON ALL BENDS
2. ALL ANGULAR BENDS 90 DEGREES
3. REMOVE ALL BURRS AND SHARP EDGES

							REQ. ITEM	PART NO.	F. BUDETTI	DESCRIPTION	SYMBOL		
							STOCK SIZE		THE TECHNICAL MATERIEL CORP. MAMARONECK, NEW YORK				
A	DWG. BECAME STD		7.13.72	20790	GE	ES	ES	BRACKET, MTG. CAP. BOARD					
Ø	ORIGINAL RELEASE FOR PRODUCTION		7.11.66	#	W/B								
SYM	DESCRIPTION		DATE	CH. NO.	DRAFTS	CHECKER	ENG. APP.						
UNLESS OTHERWISE SPECIFIED DIMENSIONS ARE IN INCHES AND INCLUDE CHEMICALLY APPLIED OR PLATED FINISHES			SCALE										
			NTS										
DECIMALS .X ± .05 .XX ± .01 .XXX ± .005			FRACTIONS ± 1/64 ANGLES ± 0° 30'			CODE		TYPE & TEMPER		HEAT TREAT. SPEC.	DRAWN	CHECKED	FINAL APPROVAL
TOLERANCES			A		STANDARD					00.7.11.66		MS4913	A
							FINISH & SPEC. NO.		ELEC. DES. APP.	MECH. DES. APP.			