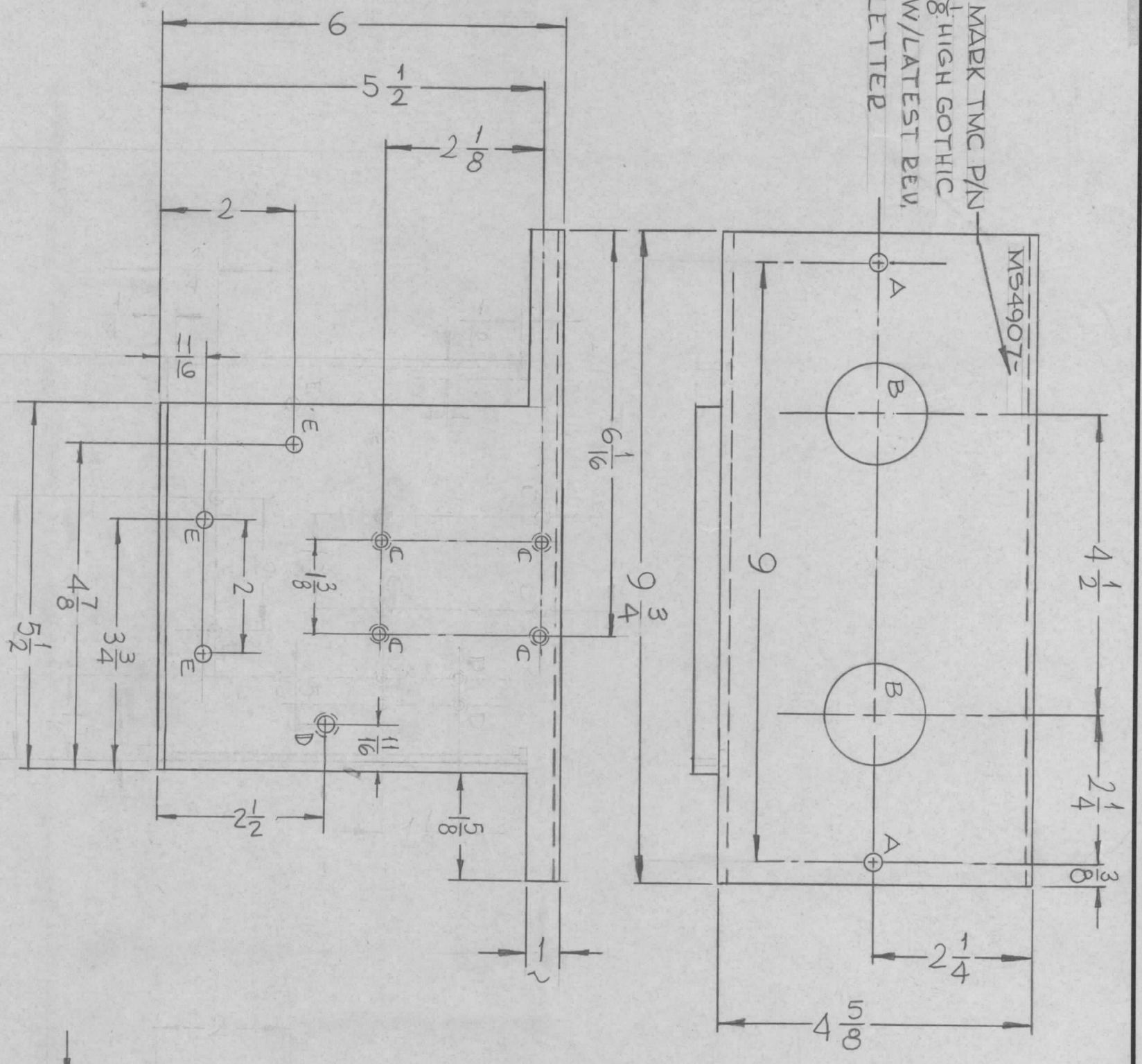


MARK TMC P/N
 1/8 HIGH GOTHIC
 W/LATEST REV.
 LETTER



MS4907 \emptyset

SYM	DESCRIPTION	DATE	E.M.N. NO.	DRAFT	CHKD	APPD
X	EXPERIMENTAL RELEASE	4-3-66	-	WTD	WTD	
\emptyset	ORIGINAL RELEASE FOR PRODUCTION	7/30/66	\emptyset	CV	WTD	

HOLE	DESCRIPTION	REQD
A	5/16 DIA	2
B	1 1/2 DIA	2
C	.191-.194 DIA	4
D	.221-.224 DIA.	1
E	15/64 DIA	3

MOUNT ITEM ① IN ALL
 "C" HOLES AS SHOWN
 MOUNT ITEM ② IN
 "D" HOLE AS SHOWN.

REQ'D.	ITEM	PART NUMBER	DESCRIPTION	SYMBOL
1	2	NT129-832-6	NUT, PLAIN, SPLINE	D
4	1	NT129-632-6	NUT, PLAIN, SPLINE	C

MATERIAL	TITLE
1/8 ALUM 5052-H32	BRACKET, CAP, MTG
S404-YELLOW IRIDITE	

UNLESS OTHERWISE SPECIFIED	DECIMALS	FRACTIONS	TOLERANCES
DIMENSIONS ARE IN INCHES AND INCLUDE CHEMICALLY APPLIED OR PLATED FINISHES	X ± .05	± 1/64	± .005
	.XX ± .01	ANGLES	± 0° 30'
	.XXX ± .005		

REF: LD2093-

Q'TY./UNIT	MODEL USED ON	ASS'Y. NO.
1	AP129	A5362

SCALE	CODE
1:2	A

NOTES
 THE CONTENTS OF THIS DRAWING ARE THE EXCLUSIVE PROPERTY OF THE TECHNICAL MATERIEL CORP. ITS UNAUTHORIZED USE OR REPRODUCTION IN WHOLE OR IN PART IS STRICTLY FORBIDDEN.

DRAWN	CHECKED	ELECT. DES.	MECH. DES.	DATE	DATE	DATE	DATE
WTD	WTD	WTD	WTD	4-11-66	11-19-66	11-23-66	12/1/66