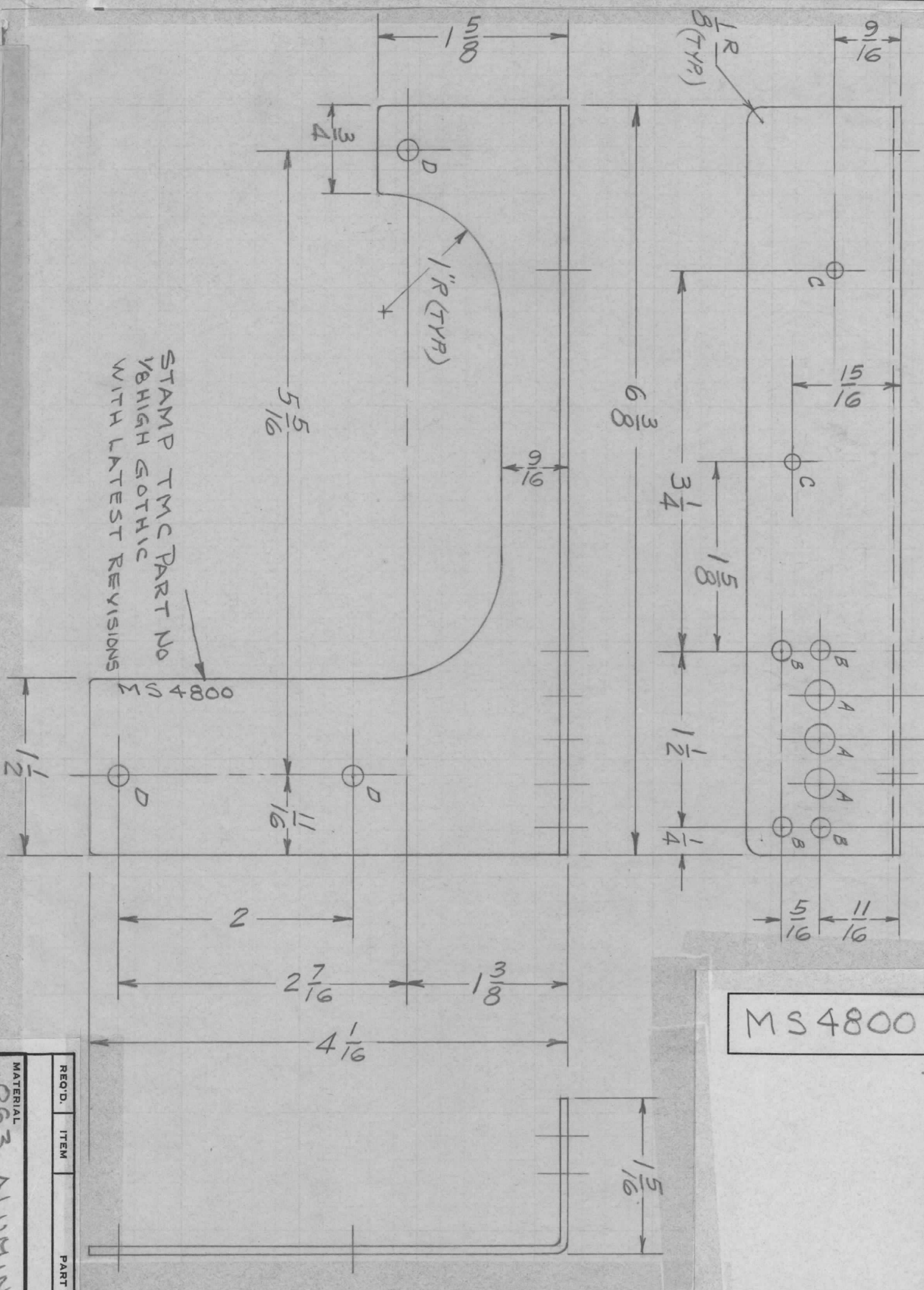


| SYM | DESCRIPTION | DATE | E.M.N. NO. | DRAFT | CHKD | APPD |
|-----|----------------------------|----------|------------|-------|------|------|
| Ø | ORIGINAL RELEASE FOR PROD. | 11/18/65 | Ø | gco | | |

REVISIONS

- A - 1/4 DIA 3 REQ
- B - 11/64 DIA 4 REQ
- C - 5/64 DIA 2 REQ
- D - 3/16 DIA 3 REQ

MS 4800



STAMP TMC PART NO
VEHIGH GOTHIC
WITH LATEST REVISIONS

UNLESS OTHERWISE SPECIFIED:

1. USE MATERIAL THICKNESS FOR MAXIMUM RADIUS ON ALL BENDS
2. ALL ANGULAR BENDS 90 DEGREES
3. REMOVE ALL BURRS AND SHARP EDGES

NOTES

| | | | | | |
|-----------|---|---------------|--------|-----------|--|
| QTY./UNIT | 1 | MODEL USED ON | ATS-2A | ASSY. NO. | |
| SCALE | | CODE | | | |

THE CONTENTS OF THIS DRAWING ARE THE EXCLUSIVE PROPERTY OF THE TECHNICAL MATERIEL CORP. ITS UNAUTHORIZED USE OR REPRODUCTION IN WHOLE OR IN PART IS STRICTLY FORBIDDEN.

REF: LD 2016

LIST OF MATERIAL

THE TECHNICAL MATERIEL CORP.
MAMARONECK, NEW YORK

BRACKET MOUNTING
TERMINAL STRIP

MATERIAL
5052-H32
FINISH
5404 YELLOW IRIDITE

UNLESS OTHERWISE SPECIFIED
DIMENSIONS ARE IN INCHES AND INCLUDE
CHEMICALLY APPLIED OR PLATED FINISHES

DECIMALS
.X ± .05
.XX ± .01
.XXX ± .005

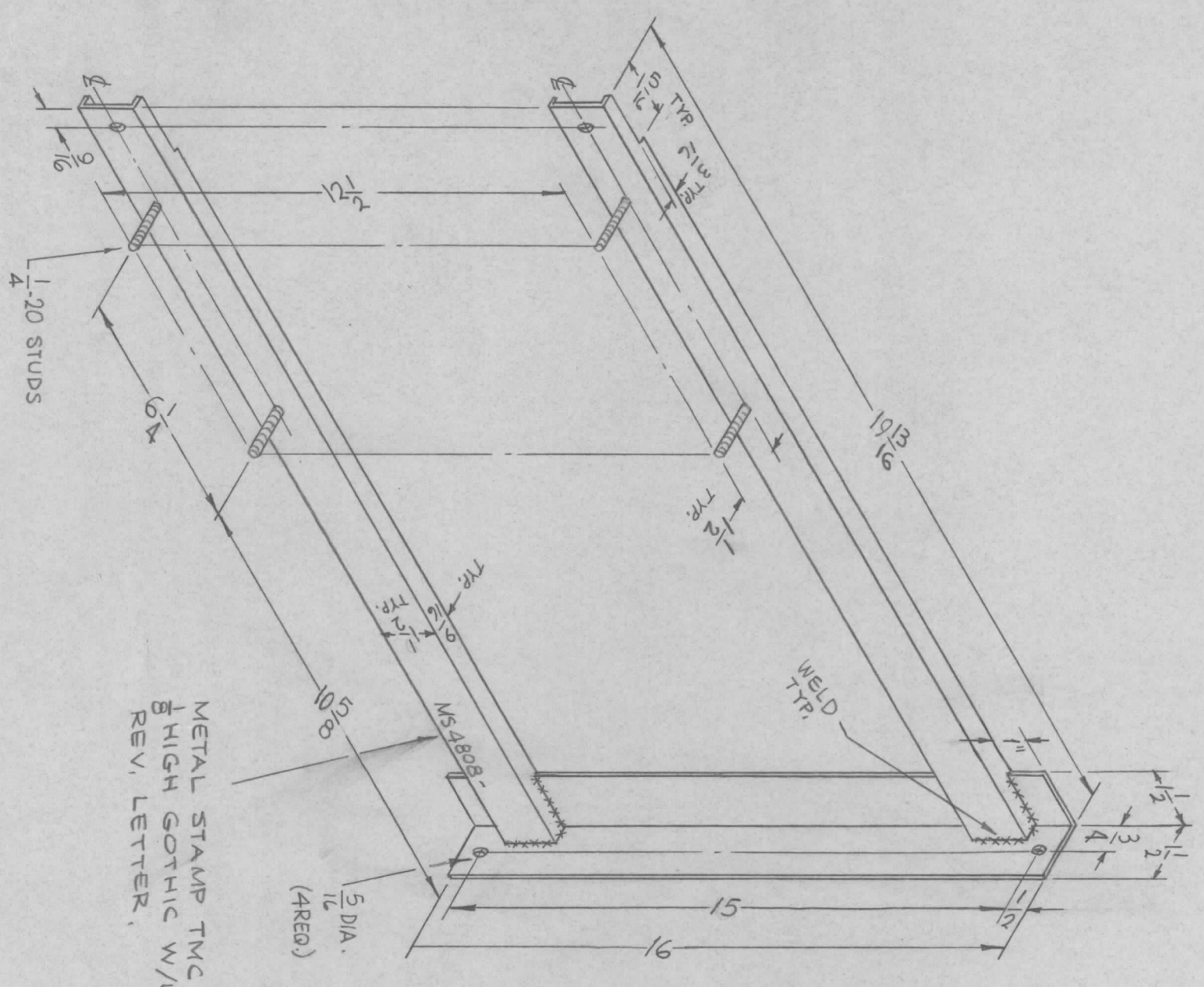
TOLERANCES

FRACTIONS
± 1/64
ANGLES
± 0° 30'

| DRAWN | CHECKED | ELECT. DES. | MECH. DES. | DATE | DATE | FINAL APPROVAL | DATE |
|-------|---------|-------------|------------|----------|----------|----------------|----------|
| AO | AO | | | 11-18-65 | 11-18-65 | MS 4800 | 11/18/65 |

| REVISIONS | | | | | | |
|-----------|---------------------------------|---------|------------|-------|------|--------------------|
| SYM | DESCRIPTION | DATE | E.M.N. NO. | DRAFT | CHKD | APPD |
| Ø | ORIGINAL RELEASE FOR PRODUCTION | 5/19/67 | Ø | CV | | <i>[Signature]</i> |

MS4808



METAL STAMP TMC P/N
3/16 HIGH GOTHIC W/LATEST
REV. LETTER.

| | | | | |
|-----------|---|------------------|---------------|-----------|
| QTY./UNIT | 1 | GPT-AOK EF (MOD) | MODEL USED ON | ASSY. NO. |
| SCALE | | C | CODE | |

THE CONTENTS OF THIS DRAWING ARE THE EXCLUSIVE PROPERTY OF THE TECHNICAL MATERIEL CORP. ITS UNAUTHORIZED USE OR REPRODUCTION IN WHOLE OR IN PART IS STRICTLY FORBIDDEN.

| REQ'D. ITEM | PART NUMBER | DESCRIPTION | SYMBOL |
|-------------|----------------|--|--------|
| F. BUDETTI | | LIST OF MATERIAL | |
| MATERIAL | 3/16 THICK HRS | THE TECHNICAL MATERIEL CORP. MAMARONECK, NEW YORK | |
| FINISH | COPPER FLASH | TITLE MOUNT, CIRCUIT BREAKER | |

| UNLESS OTHERWISE SPECIFIED DIMENSIONS ARE IN INCHES AND INCLUDE CHEMICALLY APPLIED OR PLATED FINISHES | | | |
|---|------------|-----------|--------|
| DECIMALS | TOLERANCES | FRACTIONS | ANGLES |
| .X ± .05 | | ± 1/64 | |
| .XX ± .01 | | ± 1/64 | |
| .XXX ± .005 | | ± 0° 30' | |

| DRAWN | CHECKED | ELECT. DES. | MECH. DES. | DATE | DATE | DATE | DATE |
|--------------------|---------|-------------|------------|----------|------|------|------|
| <i>[Signature]</i> | | | | 11-12-65 | | | |
| | | | | | | | |

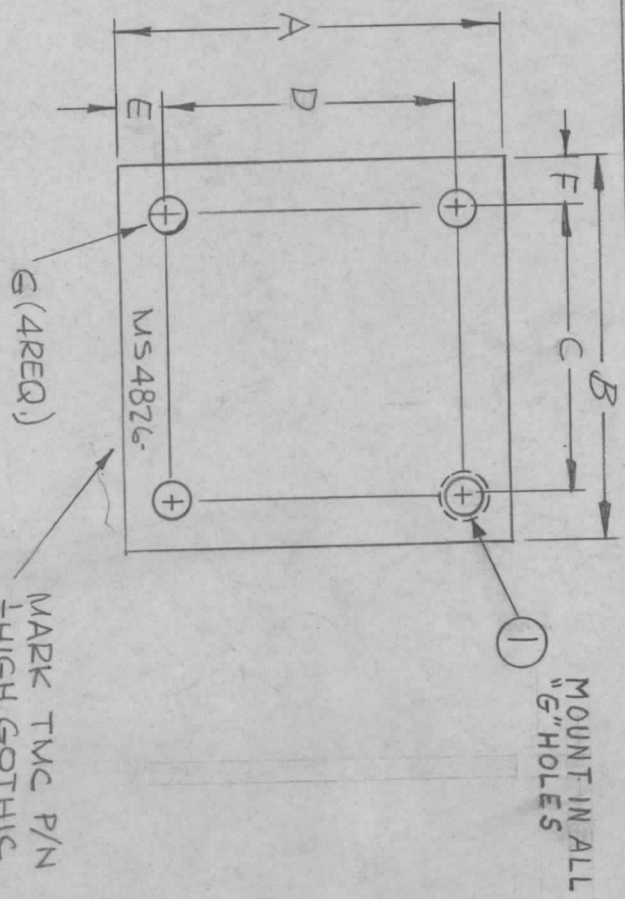
| FINAL APPROVAL | DATE | REV. LTR. |
|--------------------|---------|-----------|
| <i>[Signature]</i> | 5/19/67 | Ø |
| MS 4808 | | |

NOTES

REVISIONS

| SYM | DESCRIPTION | DATE | E.M.N. NO. | DRAFT | CHKD | APPD |
|--------|---|----------|------------|--------|------|------|
| X1 | REVISED & REDRAWN FROM ϕ SIZE | 9-9-66 | X | | | |
| X2 | MS4826-3 ADDED | 9-21-66 | X2 | | | |
| X3 | MS4826-4 ADDED | 10-7-66 | X3 | | | |
| X4 | MS4826-5 ADDED | 10-11-66 | X4 | | | |
| X5 | ON MS4826 5520 ADDED, S423 DELETED ORIGINAL RELEASE FOR PRODUCTION | 12-9-66 | X5 | | | |
| ϕ | ORIGINAL RELEASE FOR PRODUCTION | 12-28-66 | | | | |
| A | MS4826-6 ADDED, PICTORIAL CLARIFIED. | 5-3-67 | 18165 | L.A.K. | | R.H. |
| B | MS4826-7 ADDED | 8-22-67 | 18435 | H.G. | | O.P. |
| C | MS4826-8, 9 ADDED | 11-9-67 | 18591 | N.Y. | | O.P. |
| D | MS4826-10 ADDED | 1-30-68 | 18748 | N.Y. | | O.P. |
| E | MS4826-11 & 12 ADDED | 1/6/68 | 19208 | K.H. | | F.B. |
| F | MS4826-13 & 14 ADDED | 8/24/68 | 19575 | F.D. | | F.B. |
| G | MS4826-15, 16 & 17 ADDED | 11/3/69 | 19652 | F.D. | | F.B. |
| H | MS4826-18 ADDED | 2/1/73 | 21000 | G.E. | | F.B. |

| TMC P/N | A | B | C | D | E | F | G DIA. | MAT'L | ITEM # | FINISH |
|-----------|--------|--------|---------|-------|-------|-------|---------|------------------------|-----------|--|
| MS4826-1 | 3-1/4 | 4-7/8 | 4-3/8 | 2-3/4 | 1/4 | 1/4 | 191-194 | .064 ALUM. 5052-H32 | NT1296324 | S404 YEL. IRIDITE |
| MS4826-2 | 3-7/8 | 4-3/8 | 4 | 3-1/2 | 3/16 | 3/16 | 11/64 | .051 ALUM. 5052-H32 | — | S425 SILVER PL. 5520 TEX. VINYL PAINT |
| MS4826-3 | 2 | 2-3/4 | 1-3/8 | 1-3/8 | 5/16 | 1/2 | 11/64 | .064 ALUM. 5052-H32 | — | S404 YEL. IRIDITE |
| MS4826-4 | 1-9/32 | 1-9/32 | 29/32 | 29/32 | 3/16 | 3/16 | 9/64 | .064 ALUM. 5052-H32 | — | S114 ZINC CHROMATE 5520 BLUE WRINKLE |
| MS4826-5 | 2-1/8 | 3-3/8 | 2-5/8 | 1-3/8 | 3/8 | 3/8 | 13/64 | .064 ALUM. 5052-H32 | — | S404 YEL. IRIDITE |
| MS4826-6 | 4-1/2 | 5 | 4-1/2 | 4 | 1/4 | 1/4 | 11/64 | .064 ALUM. 5052-H32 | — | S404 YEL. IRIDITE |
| MS4826-7 | 4 | 8 5/8 | 8 1/8 | 2 1/2 | 3/4 | 1/4 | 11/64 | .064 ALUM. 5052-H32 | — | S404 YEL. IRIDITE |
| MS4826-8 | 15/16 | 1-5/4 | 1-1/16 | 7/16 | 1/4 | 3/8 | 11/64 | .064 ALUM. 5052-H32 | — | S404 YEL. IRIDITE |
| MS4826-9 | 2-5/8 | 4 | 2-1/4 | 1-3/8 | 5/16 | 7/8 | 1/4 | .063 ALUM. 5052-H32 | — | S404 YEL. IRIDITE |
| MS4826-10 | 1-1/2 | 3-3/4 | 3-13/32 | 15/32 | 33/64 | 11/64 | 9/64 | .040 ALUM. 5052-H32 | — | S404 YEL. IRIDITE |
| MS4826-11 | 2-1/4 | 4 | 2-1/4 | 1-1/4 | 1/2 | 7/8 | 1/4 | .064 ALUM. 5052-H32 | — | S404 YEL. IRIDITE |
| MS4826-12 | 2-1/4 | 2-1/4 | 1-3/4 | 1-3/4 | 1/4 | 1/4 | 11/64 | .064 ALUM. 5052-H32 | — | S404 YEL. IRIDITE |
| MS4826-13 | 4 3/8 | 4 3/8 | 3 3/4 | 2 1/2 | 15/16 | 5/16 | 9/32 | .063 ALUM. 5052-H32 | — | S404 YEL. IRID. |
| MS4826-14 | 1 1/16 | 1 1/16 | 1 1/4 | 1 1/4 | 1/4 | 1/4 | 11/64 | .051 ALUM. 5052-H32 | — | S404 YEL. IRID. |
| MS4826-15 | 17/8 | 19/32 | 29/32 | 29/32 | 1/4 | 3/16 | 9/64 | .064 ALUM. 5052-H32 | — | S404 YEL. IRID. |
| MS4826-16 | 25/8 | 2 1/8 | 19/16 | 19/16 | 1/4 | 9/32 | 11/64 | .064 ALUM. 5052-H32 | — | S404 YEL. IRID. |
| MS4826-17 | 1 1/8 | 6 | 4 7/8 | 5 1/6 | 5/16 | 9/16 | 9/64 | .064 ALUM. 5052-H32 | — | S404 YEL. IRID. |
| MS4826-18 | 2 1/2 | 2 1/2 | 2 | 2 | 1/4 | 1/4 | 9/32 | .064 ALUM. 5052-H32 | — | S404 YEL. IRID. |



MARK TMC P/N
HIGH GOTHIC
W/LATEST REV
LETTER.

| REQ'D. ITEM | PART NUMBER | DESCRIPTION | SYMBOL |
|-------------|-------------|--------------------|--------|
| 1 | SEE CHART | NUT, PLAIN, SPLINE | |

| REVISIONS | DATE | DESCRIPTION |
|-----------|--------|-------------|
| 1 | 9-9-66 | SEE CHART |

COVER, PLATE

THE TECHNICAL MATERIEL CORP.
MAMARONECK, NEW YORK

* APPLY S-520 ON ONE SIDE
AND EDGES ONLY.

Q'TY./UNIT: _____ MODEL USED ON: _____ ASS'Y. NO.: _____
SCALE: _____ CODE: **A** STANDARD

THE CONTENTS OF THIS DRAWING ARE THE EXCLUSIVE PROPERTY OF THE TECHNICAL MATERIEL CORP. ITS UNAUTHORIZED USE OR REPRODUCTION IN WHOLE OR IN PART IS STRICTLY FORBIDDEN.

UNLESS OTHERWISE SPECIFIED DIMENSIONS ARE IN INCHES AND INCLUDE CHEMICALLY APPLIED OR PLATED FINISHES

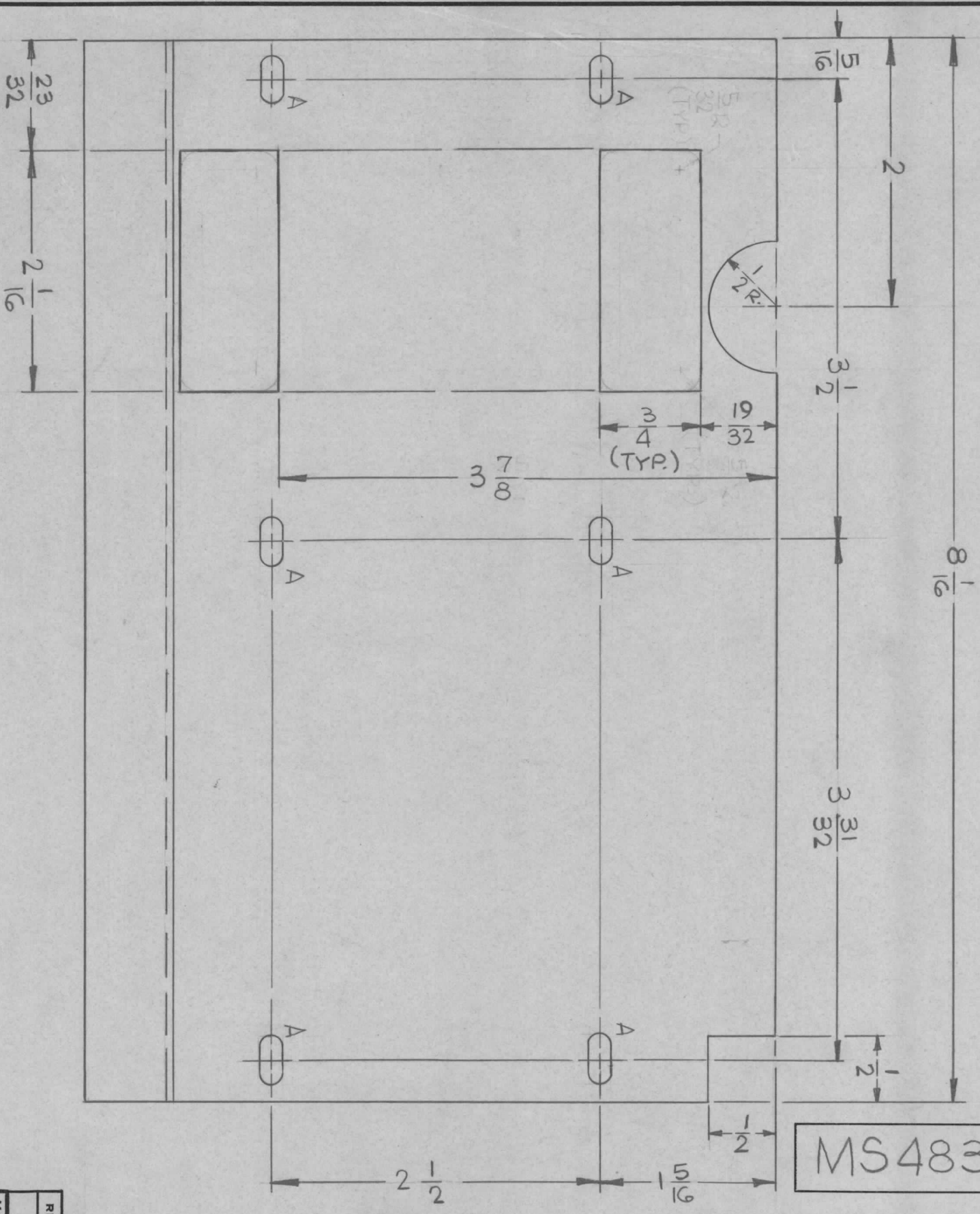
TOLERANCES
DECIMALS: ± .05
FRACTIONS: ± 1/64
ANGLES: ± 0° 30'

DRAWN: _____ DATE: 9-9-66
CHECKED: _____ DATE: _____
ELECT. DES: _____ DATE: 12-28-66
MECH. DES: _____ DATE: _____

FINAL APPROVAL: _____ DATE: _____

SHEET: _____ REV. LTR. _____

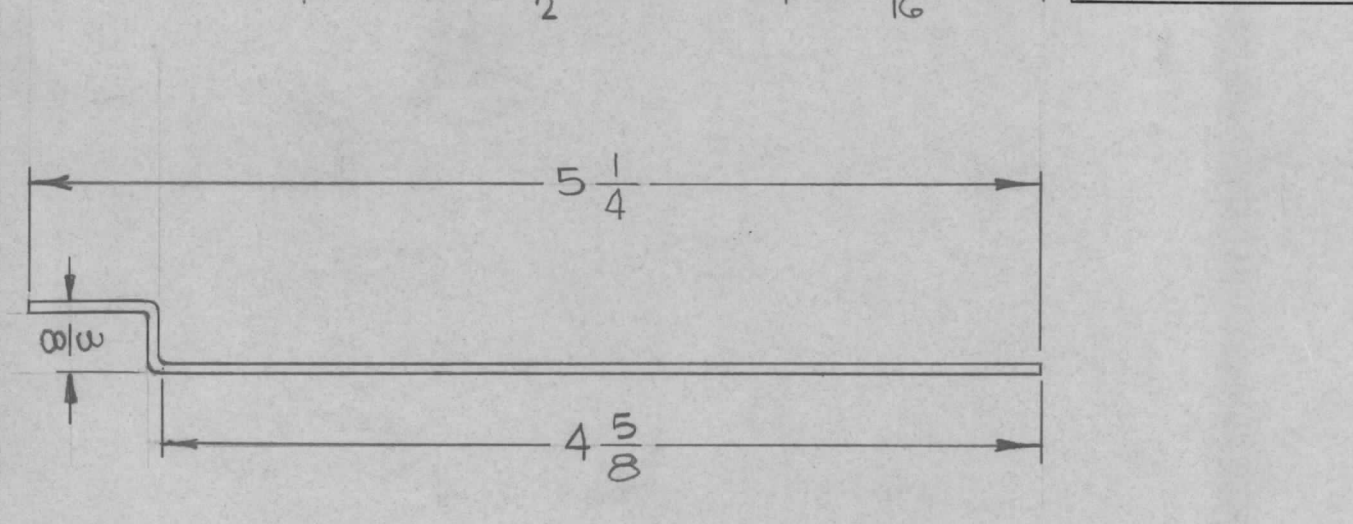
A - 1/164 x 11/32 SLOT - G REQ'D.



MS4837 A

| SYM | DESCRIPTION | DATE | E.M.N. NO. | DRAFT | CHKD | APPD |
|-----|--|---------|------------|-------|------|------|
| Ø | ORIGINAL RELEASE FOR PRODUCTION | 1/20/66 | Ø | | | |
| A | RADIUS ON CUTOUTS DEL. 3-7/8 WAS 3-15/32, 4-5/8 WAS TO OUTSIDE 2-1/4-2 1/2 | 157C3 | | | | |

REVISIONS



Ref: LD 2037

| REQ'D. | ITEM | PART NUMBER | DESCRIPTION | SYMBOL |
|--------|------|-------------|-------------|--------|
| | | | | |

| REQ'D. | ITEM | PART NUMBER | DESCRIPTION | SYMBOL |
|--------|------|-------------|-------------|--------|
| | | | | |

| REQ'D. | ITEM | PART NUMBER | DESCRIPTION | SYMBOL |
|--------|------|-------------|-------------|--------|
| | | | | |

UNLESS OTHERWISE SPECIFIED:

1. USE MATERIAL THICKNESS FOR MAXIMUM RADIUS ON ALL BENDS
2. ALL ANGULAR BENDS 90 DEGREES
3. REMOVE ALL BURRS AND SHARP EDGES

NOTES

| | | |
|------------|---------------|-----------|
| Q'TY./UNIT | MODEL USED ON | ASSY. NO. |
| 1 | SBE-8,9,10 | A0102-8 |
| SCALE | CODE | |
| 1:1 | | |

MATERIAL .051 THK. ALUMINUM - 5052 H 32
FINISH S404 - YELLOW IRIDITE

| UNLESS OTHERWISE SPECIFIED DIMENSIONS ARE IN INCHES AND INCLUDE CHEMICALLY APPLIED OR PLATED FINISHES | TOLERANCES | FRACTIONS |
|---|------------|-----------|
| DECIMALS | ± 1/64 | ANGLES |
| .XX ± .01 | | ± 0° 30' |
| .XXX ± .005 | | |

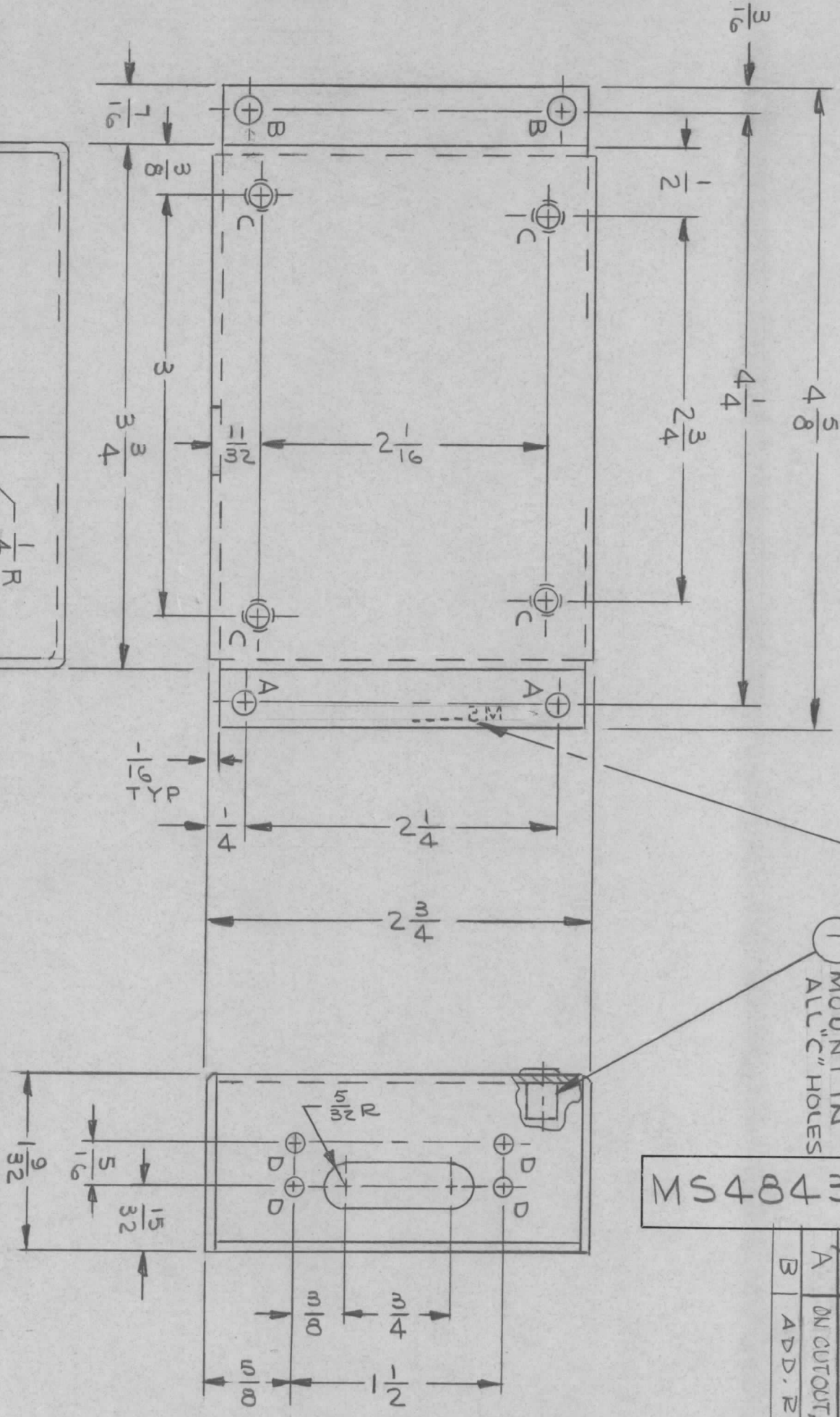
| LIST OF MATERIAL | | THE TECHNICAL MATERIEL CORP. | |
|--------------------------|-------------|------------------------------|---------|
| COVER, BOTTOM, XTAL OVEN | | MAMARONECK, NEW YORK | |
| DRAWN | H. AUSTIN | DATE | 1-10-66 |
| CHECKED | [Signature] | DATE | 1-20-66 |
| ELECT. DES. | [Signature] | DATE | |
| MECH. DES. | | DATE | |
| FINAL APPROVAL | | DATE | |
| [Signature] | | DATE | |
| MS4837 | | REV. LTR. | A |

MARK 1/8 HIGH GOTHIC (BOTTOM)
TMC PT. NO. W/LATEST REV. LETTER

MS4843

| SYM | DESCRIPTION | DATE | EM.N. NO. | DRAFT | CHKD | APPD |
|-----|---|----------|-----------|-------|------|------|
| X1 | ITEM-1 REQ'D WAS 5 | 4/4/66 | | JL | | |
| | ORIGINAL RELEASE FOR PRODUCTION | 4/18/66 | | | | |
| A | DN CUTOUT, GRG DM.F.R. 7/32 TO 1/4, FR 9/32 TO 7/16 | 7-22-66 | 16614 | RME | | |
| B | ADD. REF. LD2177 - AK102A | 10/13/66 | 1703C | WCA | | |

1 MOUNT IN ALL "C" HOLES



| HOLE | DESCRIPTION | REQD |
|------|-------------|------|
| A | 11/64 DIA | 2 |
| B | 13/64 DIA | 2 |
| C | .189 DIA | 4 |
| D | 9/64 DIA | 4 |

UNLESS OTHERWISE SPECIFIED:

1. USE MATERIAL THICKNESS FOR MAXIMUM RADIUS ON ALL BENDS
2. ALL ANGULAR BENDS 90 DEGREES
3. REMOVE ALL BURRS AND SHARP EDGES
4. MOUNT INSERTS AFTER FINISHING

NOTES

| | | | | | |
|-----------|-----|---------------|--------|-----------|--|
| QTY./UNIT | 1 | MODEL USED ON | RTIH-1 | ASSY. NO. | |
| SCALE | 1/1 | | | | |

| | | | | | |
|-------------|----------------------------|---|---------|-------------|--|
| REQ'D. ITEM | 4 | 1 | TE108-1 | PART NUMBER | |
| MATERIAL | .064 THK ALUMINUM 5052-H32 | | | | |
| FINISH | YELLOW IRIDITE PER S404 | | | | |

| | | | | |
|---|--------------------|------|-------------|----------------|
| LIST OF MATERIAL | NUT, PLAIN, CLINCH | | DESCRIPTION | SYMBOL |
| | 4 | 1 | TE108-1 | C |
| MATERIAL: .064 THK ALUMINUM 5052-H32 | | | | |
| FINISH: YELLOW IRIDITE PER S404 | | | | |
| TITLE: CHASSIS, ELECT. - AUXILIARY KEYS | | | | |
| THE TECHNICAL MATERIEL CORP. MAMARONECK, NEW YORK | | | | |
| DRAWN | J.L. | DATE | 11/22/65 | FINAL APPROVAL |
| CHECKED | [Signature] | DATE | 4-11-66 | [Signature] |
| ELECT. DES. | [Signature] | DATE | | |
| MECH. DES. | [Signature] | DATE | | |
| MS4843 | | | | REV. LTR. B |

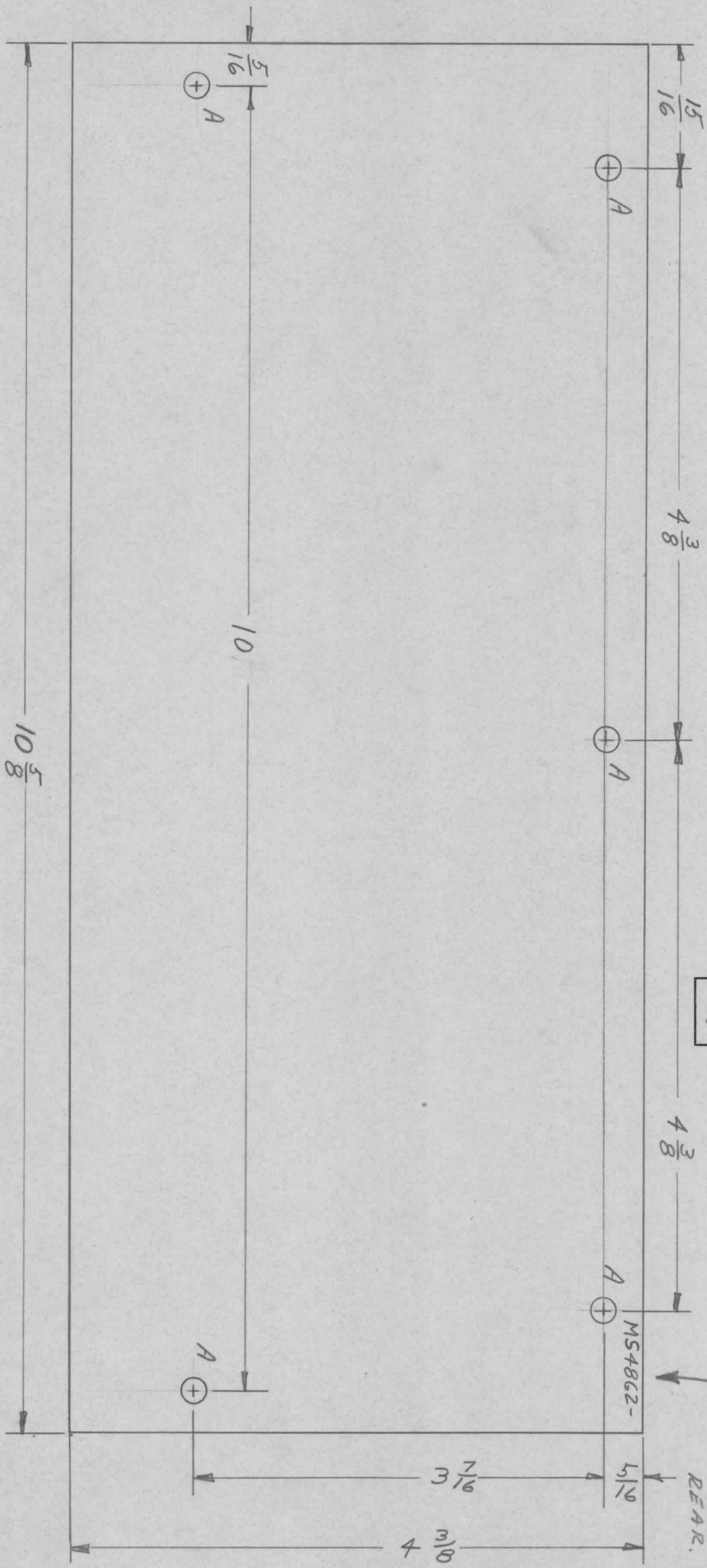
REF. LD2177 - AK102A
REF. LD2052 - AK102

SK3229-6

| REVISIONS | | DATE | E.M.N. NO. | DRAFT | CHKD | APPD |
|-----------|---------------------------------|--------|------------|-------|------|--------------------|
| Ø | ORIGINAL RELEASE FOR PRODUCTION | 2/2/66 | | | | <i>[Signature]</i> |

MS4862

STAMP WITH THE PIN
W/ LATEST REVISION LETTER ON
REAR.



A ~ 11/64 DIA. 5 REQ.

UNLESS OTHERWISE SPECIFIED:

1. USE MATERIAL THICKNESS FOR MAXIMUM RADIUS ON ALL BENDS
2. ALL ANGULAR BENDS 90 DEGREES
3. REMOVE ALL BURRS AND SHARP EDGES

FRONT VIEW SHOWN

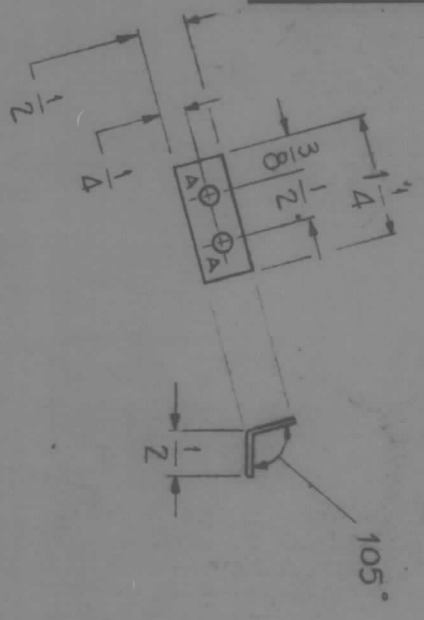
S 404 VEL IRIDITE
S 114 ZINC CHROMATE PRIMER } FRONT &
S 520 BCAF BLUE ARMOXIDE } EDGES ONLY

| | | |
|------------|---------------|------------|
| Q'TY./UNIT | MODEL USED ON | ASS'Y. NO. |
| 2 | KIT 180 | |
| SCALE | CODE | |

| REQ'D. | ITEM | PART NUMBER | DESCRIPTION | SYMBOL |
|--------|------|-------------|-------------------------------------|--------|
| | | | LIST OF MATERIAL | |
| | | | MATERIAL | |
| | | | 064 ALUM. 5052 H32 | |
| | | | FINISH | |
| | | | SEE NOTE | |
| | | | TITLE | |
| | | | PLATE, SIDE | |
| | | | THE TECHNICAL MATERIEL CORP. | |
| | | | MAMARONECK, NEW YORK | |
| | | | DRAWN | |
| | | | <i>[Signature]</i> | |
| | | | CHECKED | |
| | | | <i>[Signature]</i> | |
| | | | ELECT. DES. | |
| | | | <i>[Signature]</i> | |
| | | | MECH. DES. | |
| | | | <i>[Signature]</i> | |
| | | | DATE | |
| | | | 3 DEC 65 | |
| | | | 2-2-66 | |
| | | | FINAL APPROVAL | |
| | | | <i>[Signature]</i> | |
| | | | MS4862 | |
| | | | DATE | |
| | | | | |
| | | | REV. LTR. | |
| | | | Ø | |

NOTES

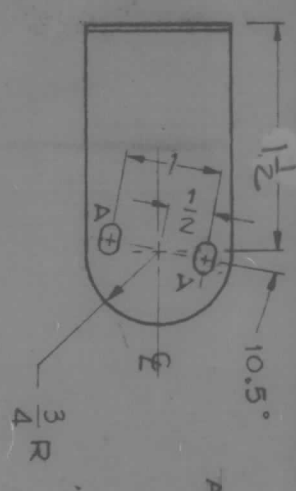
M54863 0



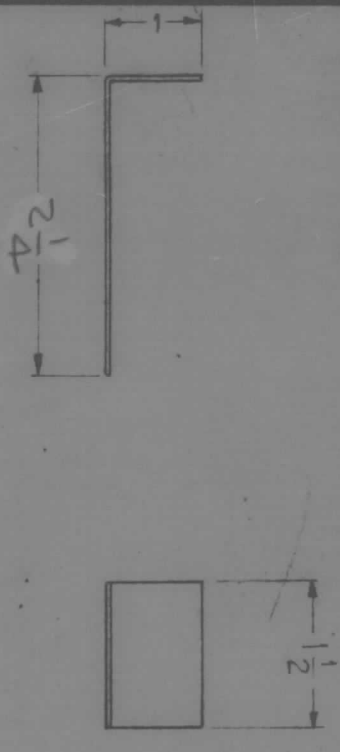
A - 3/16 (1.187) DIA 2 Req.

MAT'L - BRASS, .064, FINISH - S-404 IRIDITE

BRACKET, SUPPORT TUBE STRAP
(2 REQ. PER UNIT)

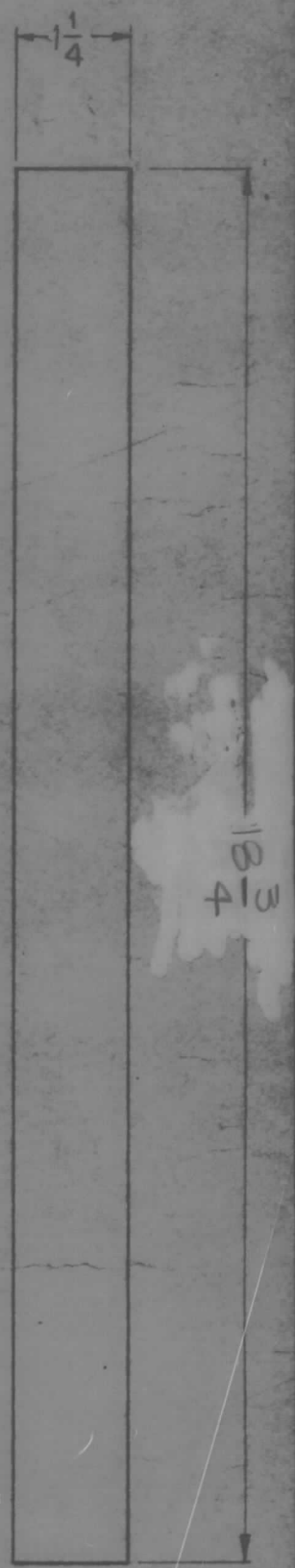


A - 6/16 x 1/2 SLOTS 2 Req.

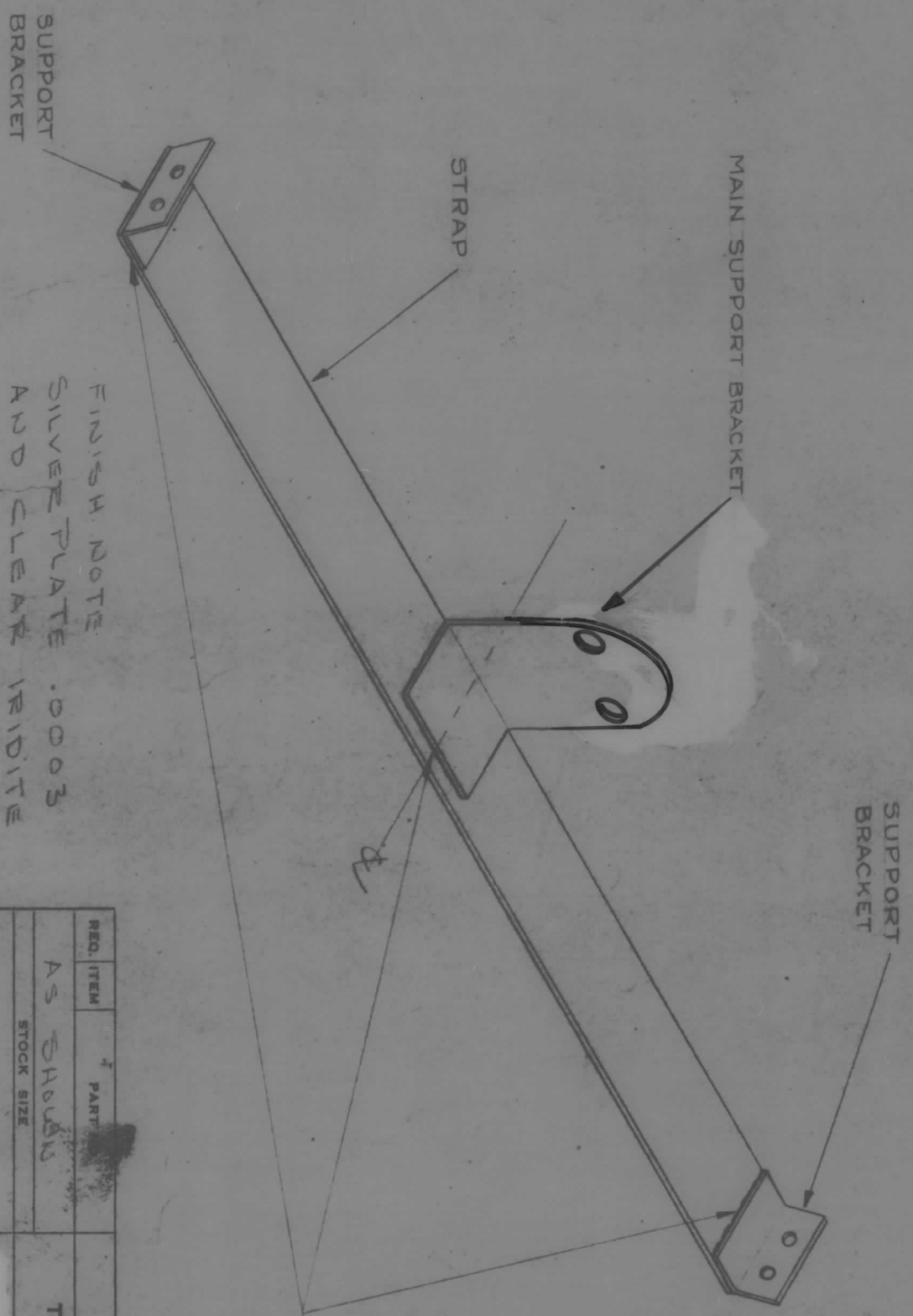


MAT'L - BRASS, .064, FINISH S-404 IRIDITE
BRACKET, MAIN SUPPORT TUBE STRAP
(1 REQ. PER UNIT)

| | | | |
|------------------|--------------|----------------|---|
| DEC. DIM. ± | FRAC. DIM. ± | ANGULAR DIM. ± | TOLERANCES |
| | | | MAXIMUM ALLOWABLE TOLERANCES HAVE BEEN DETERMINED AND ANY DEVIATIONS WILL BE CAUSE FOR REJECTION. REMOVE ALL BURRS AND SHARP EDGES. |
| ISSUE ITEM | CHANGED FROM | DATE | CH. NO. |
| ORIGINAL RELEASE | | 2/2/66 | |
| | | | DRAFTER |
| | | | CHECKER |
| | | | ENG. APP. |



MAT'L SOFT COPPER, .032,
STRAP
(1 REQ. PER UNIT)



FINISH NOTE
SILVER PLATE .0003
AND CLEAR IRIDITE

NOTICE TO PERSONS RECEIVING THIS DRAWING -
THE TECHNICAL MATERIEL CORPORATION claims proprietary right in the material disclosed hereon. This drawing is issued in confidence for engineering information only and may not be reproduced or used to manufacture anything shown hereon without permission from THE TECHNICAL MATERIEL CORPORATION to the user. This drawing is loaned for mutual assistance and is subject to recall at any time.

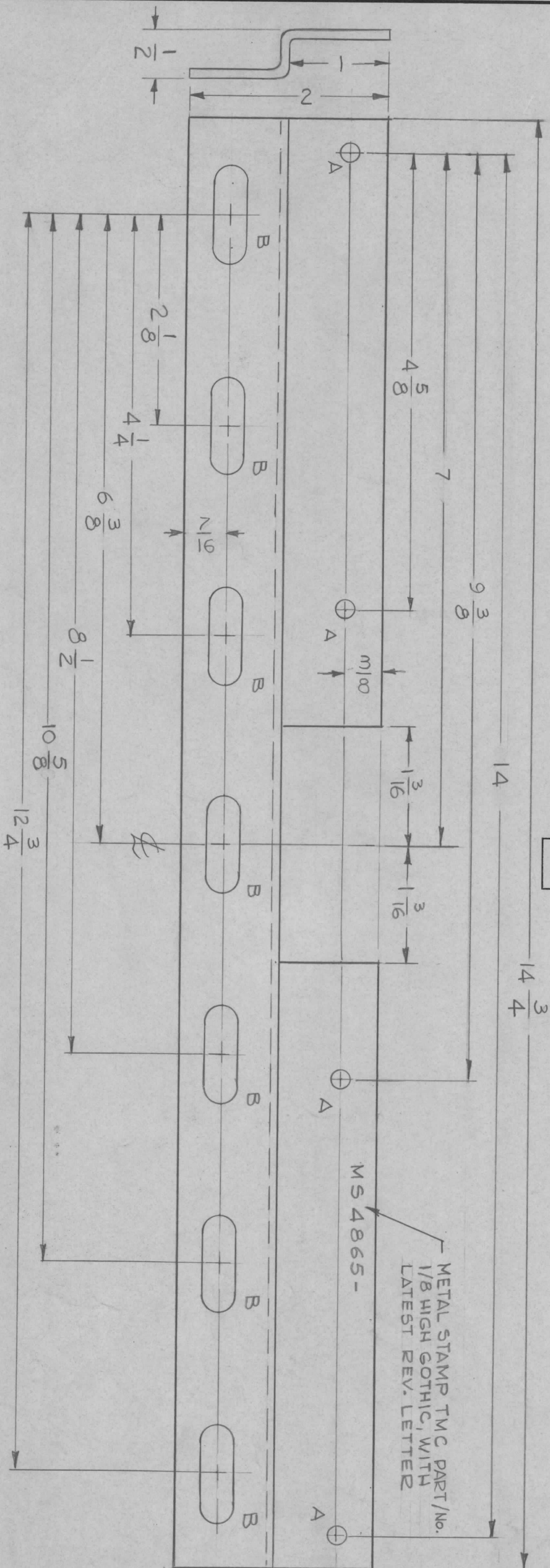
Property of:
THE TECHNICAL MATERIEL CORPORATION
MAMARONECK, NEW YORK

| | | | | |
|---------------|---------|-------------|-----------|-----------|
| REQ. PER UNIT | MODEL | PROJECT NO. | ASBY. NO. | DATE |
| 1 | KIT 180 | | | 20 JAN 66 |
| | | | | USED ON |

| REQ. ITEM | PART | DESCRIPTION | SYMBOL |
|-----------|--------------------|---|----------------|
| | AS SHOWN | THE TECHNICAL MATERIEL CORP. MAMARONECK, NEW YORK | |
| | AS SHOWN | VAPOR COOLED TUBE STRAP | |
| | MATERIAL | | |
| | TYPE & TEMPER | HEAT TREAT. SPEC. | |
| | | | |
| | DRAWN | CHECKED | FINAL APPROVAL |
| | SEE NOTE | | |
| | FINISH & SPEC. NO. | | |
| | | | |

| HOLE | DESCRIPTION | REQ. |
|------|-----------------|------|
| A | 19/64 DIA. | 4 |
| B | 11/32 X 1" SLOT | 7 |

| MS4865 A | | REVISIONS | |
|----------|---------------------------------|-----------|-----------|
| SYM | DESCRIPTION | DATE | EM.N. NO. |
| Ø | ORIGINAL RELEASE FOR PRODUCTION | 3/28/66 | — |
| A | 1/8" W x 5/16" H | 11/28/66 | 17322 |



UNLESS OTHERWISE SPECIFIED:

1. USE MATERIAL THICKNESS FOR MAXIMUM RADIUS ON ALL BENDS
2. ALL ANGULAR BENDS 90 DEGREES
3. REMOVE ALL BURRS AND SHARP EDGES

NOTES

| | | | | | |
|-----------|-----|---------------|-------|-----------|-------|
| QTY./UNIT | 4 | MODEL USED ON | TOC-7 | ASSY. NO. | A5434 |
| SCALE | 1:1 | CODE | A | | |

| REQ'D. | ITEM | PART NUMBER | DESCRIPTION | SYMBOL |
|--------|------|-------------|-------------|--------|
| | POSE | | | |

| | |
|----------|-------------------------------|
| MATERIAL | .081 THK. ALUM. 5052 - H32 |
| FINISH | S404 YELLOW IRIDITE |

| | | | |
|---------------------------------------|-------------|--------------------------------------|----------|
| UNLESS OTHERWISE SPECIFIED | | DIMENSIONS ARE IN INCHES AND INCLUDE | |
| CHEMICALLY APPLIED OR PLATED FINISHES | | FRACTIONS | |
| DECIMALS | X ± .05 | ANGLES | ± 1/64 |
| TOLERANCES | .XX ± .01 | | ± 0° 30' |
| | .XXX ± .005 | | |

| | | | |
|-------------|---------|----------------|--|
| DRAWN | | DATE | |
| G.D.L. | 2-16-66 | FINAL APPROVAL | |
| CHECKED | 3-24-66 | DATE | |
| ELECT. DES. | | DATE | |
| MECH. DES. | | DATE | |

| | |
|------------------------------|--|
| THE TECHNICAL MATERIEL CORP. | |
| MAMARONECK, NEW YORK | |
| SUPPORT, REAR | |

| | | | |
|------|----------|------|----------|
| DATE | 3/28/66 | DATE | 3/28/66 |
| DATE | 11/28/66 | DATE | 11/28/66 |
| DATE | | DATE | |
| DATE | | DATE | |

MS4874 ϕ

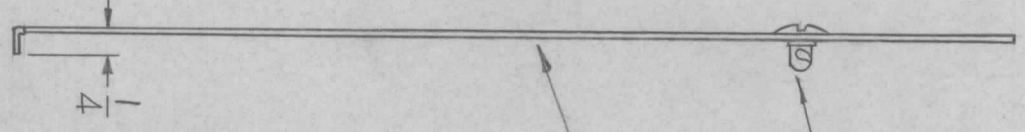
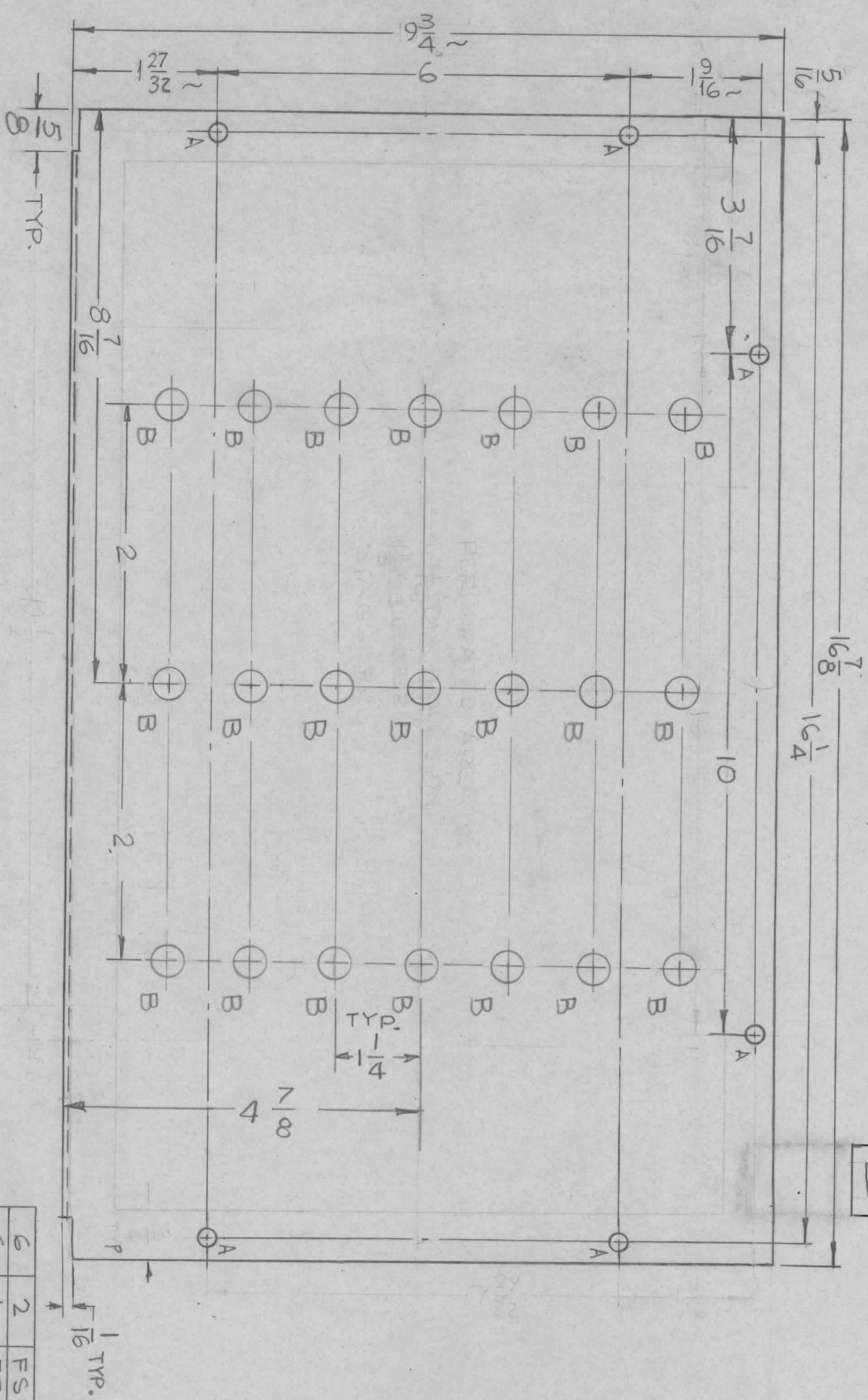
| SYM | DESCRIPTION | DATE | E.M.N. NO. | DRAFT | CHKD | APPD |
|--------|--|----------|------------|-------|----------|------|
| X1 | 1.27/32 WAS 2-7/32, 9-3/4 WAS 10-7/16, 1-11/16 ADDED | 4-29-66 | X1 | MS4 | | qq |
| X2 | 1-9/16 WAS 1-11/16 | 6-21-66 | X2 | MS4 | | |
| X3 | TMC P/Ns DELETED. TITLE WAS COVERED & BOTTOM. "B" HOLES ADDED. PERFORATED AREA DELETED | 8-11-66 | X3 | GDL | ϕ B | ojs |
| ϕ | ORIGINAL RELEASE FOR PRODUCTION | 11-22-66 | ϕ | RME | | |

REVISIONS

HOLES:
 A ~ 1/4 DIA. 6 REQ.
 B ~ 1/2 DIA. 21 REQ.

1 2 TO BE SUPPLIED AND ASSEMBLED BY TMC

MADE TMC PART NO. (MS4874-)
 1/8 HIGH GOTHIC W/LATEST
 REV. LETTER.



| | | |
|----------|-------|------|
| TMC P/N | QTY | DATE |
| MS4874-1 | 5/8 | 7/66 |
| MS4874-2 | 3-3/4 | 7/66 |

| REQ'D. | ITEM | PART NUMBER | DESCRIPTION | SYMBOL |
|--------|------|-------------|-----------------|--------|
| 6 | 2 | FS109-3 | RING, RETAINING | A |
| 6 | 1 | FS110-1 | STUD, TURNLOCK | A |

LIST OF MATERIAL
 THE TECHNICAL MATERIEL CORP.
 MAMARONECK, NEW YORK

MATERIAL
 .051 THICK ALUMINUM
 5052 H32

TITLE
 COVER, TOP

| DECIMALS | TOLERANCES | FRACTIONS | ANGLES |
|-------------|------------|-----------|--------|
| .X ± .05 | | ± 1/64 | |
| .XX ± .01 | | ± .005 | |
| .XXX ± .005 | | ± 0° 30' | |

| | | | | | |
|-----------|-------|---------------|---------|-----------|--------|
| QTY./UNIT | 1 EA | MODEL USED ON | SWCA-3K | ASSY. NO. | A52264 |
| SCALE | 1/2:1 | CODE | A | | |

UNLESS OTHERWISE SPECIFIED:
 1. USE MATERIAL THICKNESS FOR MAXIMUM RADIUS ON ALL BENDS
 2. ALL ANGULAR BENDS 90 DEGREES
 3. REMOVE ALL BURRS AND SHARP EDGES

NOTES

THE CONTENTS OF THIS DRAWING ARE THE EXCLUSIVE PROPERTY OF THE TECHNICAL MATERIEL CORP. ITS UNAUTHORIZED USE OR REPRODUCTION IN WHOLE OR IN PART IS STRICTLY FORBIDDEN.

| | | | |
|------|----------|------|----------|
| DATE | 8-19-65 | DATE | 11-22-66 |
| DATE | 11-19-66 | DATE | 11-22-66 |
| DATE | | DATE | |

MS4874

REV. LTR.

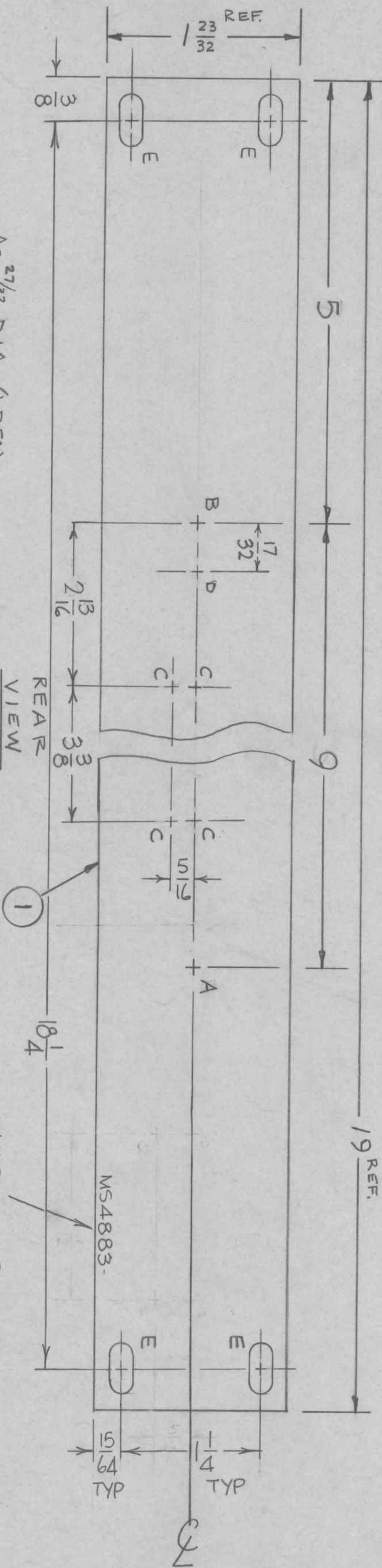
MACHINING:

1. MILL ALL EDGES.
2. HOLES MUST BE DRILLED, UNLESS OTHERWISE SPECIFIED.
3. LATERAL BOW OF PANEL MUST BE KEPT TO .031 TOLERANCE.
4. PANEL MUST BE FREE OF ALL MACHINING MARKS, GOUGES AND SCRATCHES. IF NECESSARY, SAND FRONT OF PANEL WITH NO. 120 GRIT SANDPAPER.

FINISH NOTES:

1. S404 - IRIDITE 14-2 AL-COAT FRONT AND
 2. S114 - ZINC CHROMATE PRIMER EDGES ONLY
 3. S115 - SMOOTH GRAY ENAMEL
- OR

PRIME AND PAINT PER CUSTOMER'S SPECIFICATIONS.



- A - 27/32 D/A. (1 REQ)
- B - 3/8 D/A. (1 REQ)
- C - 3/64 D/A. (4 REQ)
- D - 1/8 DIA X 1/8 DP. (1 REQ) FROM REAR
- E - 1/4 X 29/64 (4 REQ) SLOTS

MS4883

| SYM | DESCRIPTION | DATE | E.M.N. NO. | DRAFT | CHKD | APPD |
|-----|---------------------------------|--------|------------|-------|------|------|
| Ø | ORIGINAL RELEASE FOR PRODUCTION | 3-4-66 | | Je | gib | |

REVISIONS

REF: LD 2057

MAKE TWO PART NO. 1/8 HIGH GOTHIC W/LATEST REVISION LETTER.

B. DETAIL

| QTY./UNIT | MODEL USED ON | ASSY. NO. |
|-----------|---------------|-----------|
| 1 | DDR-6N | |
| 1 | DDR-7J | |

SCALE

| REQ'D. ITEM | PART NUMBER | DESCRIPTION | SYMBOL |
|-------------|------------------------------|---|--------|
| STURMER | 3/16 THICK ALUMINUM, 2024-T3 | THE TECHNICAL MATERIEL CORP. MAMARONECK, NEW YORK | |

LIST OF MATERIAL

| TITLE | DATE | DATE | DATE |
|--------------|---------|--------|------|
| PANEL, FRONT | 2-16-66 | 3-4-66 | |

THE TECHNICAL MATERIEL CORP. MAMARONECK, NEW YORK

UNLESS OTHERWISE SPECIFIED DIMENSIONS ARE IN INCHES AND INCLUDE CHEMICALLY APPLIED OR PLATED FINISHES

TOLERANCES

DECIMALS: X ± .05, .XX ± .01, .XXX ± .005

FRACTIONS: ± 1/64, ANGLES: ± 0° 30'

NOTES

THE CONTENTS OF THIS DRAWING ARE THE EXCLUSIVE PROPERTY OF THE TECHNICAL MATERIEL CORP. ITS UNAUTHORIZED USE OR REPRODUCTION IN WHOLE OR IN PART IS STRICTLY FORBIDDEN.

