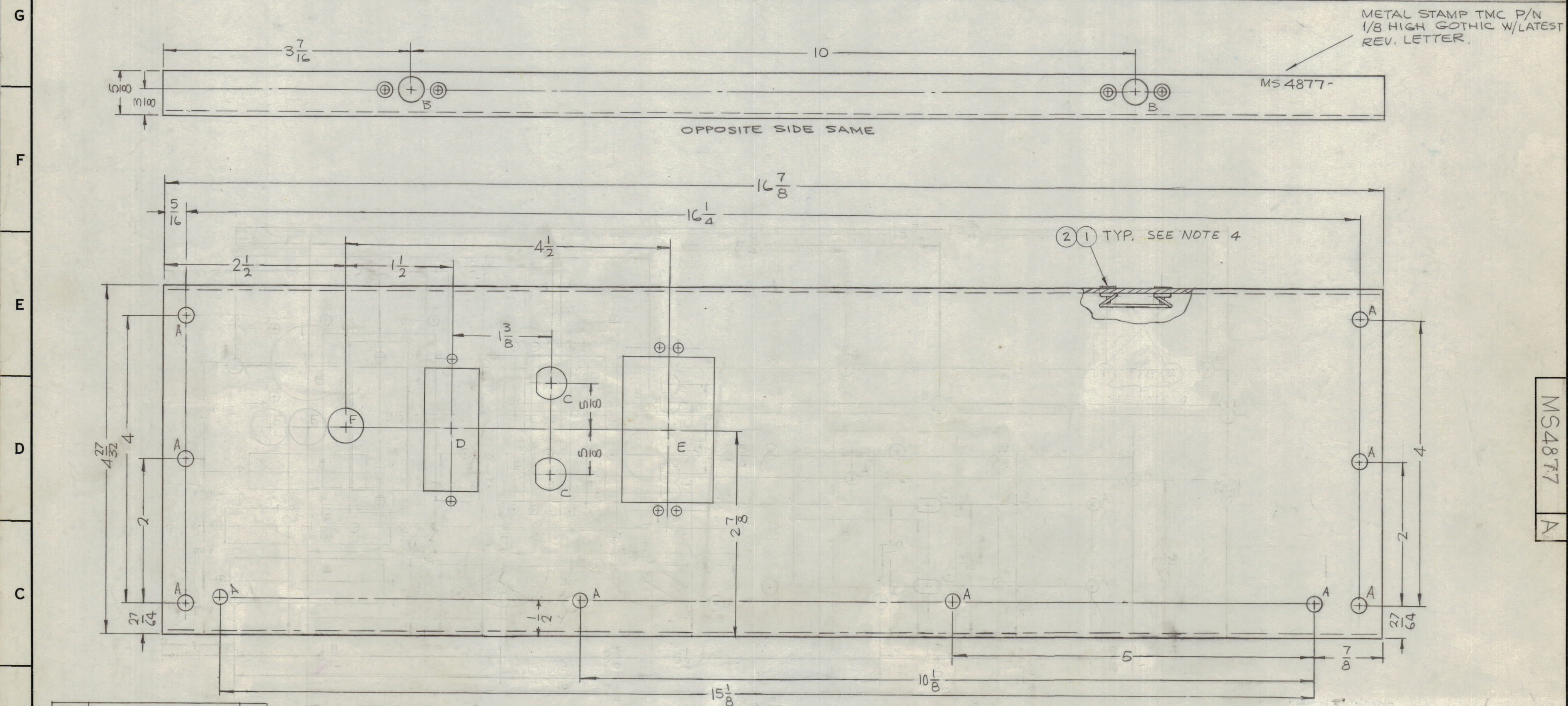


REVISIONS					
ZONE	SYM	DESCRIPTION	DATE	E.M.N. NO.	APPD
X1		COMPLETELY REVISED	11-11-65	X1	SRG
X2		COMPLETELY REVISED	1-10-66	X2	SRG
X3		COMPLETELY REVISED	4-29-66	X3	MKB
X4		C, D, E DETAILS ADDED 1" HOLE ADDED, 2" DELETED	5-18-66	X4	SRG
X5		D, E & 4 A HOLES RELOCATED, F HOLE ADDED	5-20-66	X5	MKB
X6		A, C, D, E, F HOLES RELOCATED	6-21-66	X6	MKB
X7		D DETAIL REVISED, 2 1/2, 1 1/2 WAS 2, 4 1/2 WAS 5	7-25-66	X7	SRG
Ø		ORIGINAL RELEASE FOR PRODUCTION	11-22-66		RME
A		ADDED IT. 1 & 2 & NOTE 4	6,6,68	18943	MKB



HOLE	DESCRIPTION	REQ
A	13/64 DIA	10
B	SEE DETAIL	4
C	↑	2
D	↓	1
E	SEE DETAIL	1
F	1/2 DIA.	1

- UNLESS OTHERWISE SPECIFIED:
1. USE MATERIAL THICKNESS FOR MAXIMUM RADIUS ON ALL BENDS
 2. ALL ANGULAR BENDS 90 DEGREES
 3. REMOVE ALL BURRS AND SHARP EDGES
 4. IT. 1 & 2 TO BE SUPPLIED & ASSEMBLED BY TMC.

REF: TMC DWG. NO. LD2145

4	2	FS 102-2	LOCK SPRING
8	1	RI 100-094-32	RIVET, BLIND
REQ'D. ITEM		PART NUMBER	DESCRIPTION
F. BUDETTI LIST OF MATERIAL			
MATERIAL		.064 THICK ALUMINUM 5052-H32	
FINISH		5404 YEL. IRIDITE	
TITLE		THE TECHNICAL MATERIEL CORP. MAMARONECK, NEW YORK	
TITLE		PLATE, REAR	
DRAWN	DATE	FINAL APPROVAL	DATE
CHECKED	DATE		DATE
ELECT. DES.	DATE		DATE
MECH. DES.	DATE		DATE
DIMENSIONS ARE IN INCHES AND INCLUDE CHEMICALLY APPLIED OR PLATED FINISHES		UNLESS OTHERWISE SPECIFIED	
DECIMALS		FRACTIONS	
.X ± .05		± 1/64	
.XX ± .01		ANGLES ± 0° 30'	
.XXX ± .005			
SCALE	1:1	CODE	A
MODEL USED ON	SWCA-3K	ASS'Y. NO.	A5268
THE CONTENTS OF THIS DRAWING ARE THE EXCLUSIVE PROPERTY OF THE TECHNICAL MATERIEL CORP. ITS UNAUTHORIZED USE OR REPRODUCTION IN WHOLE OR IN PART IS STRICTLY FORBIDDEN.		TOLERANCES ± 0° 30'	
NOTES		MS4877	
		SHEET	